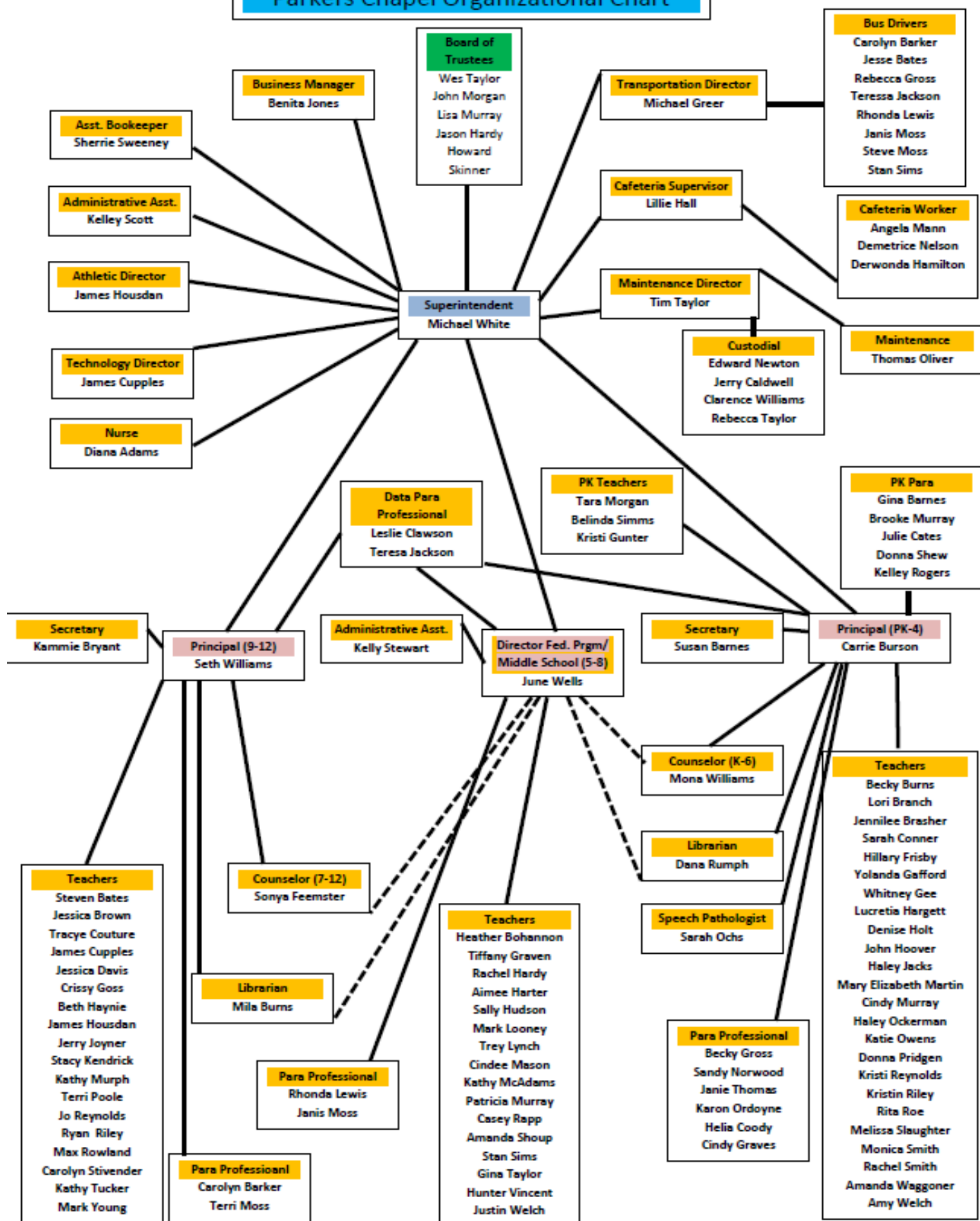


Parkers Chapel
Employee
Handbook
2016-2017

Parkers Chapel Organizational Chart



[LICENSED PERSONNEL SALARY SCHEDULE](#)

[LICENSED PERSONNEL EVALUATIONS](#)

[LICENSED MINORITY RECRUITMENT](#)

[PERSONNEL REDUCTION IN FORCE](#)

[PERSONNEL CONTRACT - RETURN OF CONTRACT](#)

[EMPLOYEE TRAINING](#)

[PERSONNEL DRUG TESTING](#)

[PERSONNEL SICK LEAVE](#)

[LICENSED PERSONNEL PLANNING TIME](#)

[PERSONNEL PERSONAL AND PROFESSIONAL LEAVE](#)

[PERSONNEL RESP. IN DEALING WITH SEX OFFENDERS ON CAMPUS](#)

[PERSONNEL PUBLIC OFFICE](#)

[PERSONNEL JURY DUTY](#)

[LICENSED PERSONNEL LEAVE-INJURY FROM ASSAULT](#)

[LICENSED PERSONNEL REIMBURSEMENT FOR PURCHASE OF SUPPLIES](#)

[INSULT OR ABUSE OF LICENSED PERSONNEL](#)

[PERSONNEL OUTSIDE EMPLOYMENT](#)

[PERSONNEL EMPLOYMENT](#)

[PERSONNEL TOBACCO USE](#)

[DRESS OF EMPLOYEES](#)

[PERSONNEL POLITICAL ACTIVITY](#)

[PERSONNEL DEBTS](#)

[PERSONNEL GRIEVANCES](#)

[PERSONNEL SEXUAL HARASSMENT](#)

[LICENSED PERSONNEL SUPERVISION OF STUDENTS](#)

[PERSONNEL COMPUTER USE POLICY](#)

[PERSONNEL EMPLOYEE INTERNET USE AGREEMENT](#)

[PERSONNEL SCHOOL CALENDAR](#)

[PARENT-TEACHER COMMUNICATION](#)

[DRUG FREE SCHOOL POLICY](#)

[PERSONNEL FAMILY MEDICAL LEAVE](#)

ASSIGNMENT OF EXTRA DUTIES FOR PERSONNEL

PERSONNEL CELL PHONE USE

PERSONNEL BENEFITS

LICENSED PERSONNEL DISMISSAL AND NON-RENEWAL

ASSIGNMENT OF TEACHER AIDES

LICENSED PERSONNEL RESPONSIBILITIES GOVERNING BULLYING

PERSONNEL RECORDS & REPORTS

PERSONNEL DUTY TO REPORT CHILD ABUSE, MALTREATMENT OR NEGLECT

PERSONNEL VIDEO SURVEILLANCE

OBTAINING/ RELEASING STUDENT'S FREE&REDUCED MEAL ELIGIBILITY INFO

DUTY OF LICENSED EMPLOYEES TO MAINTAIN LICENSE IN GOOD STANDING

PERSONNEL WORKPLACE INJURIES & WORKERS COMP

PERSONNEL SOCIAL NETWORKING AND ETHICS

PERSONNEL VACATIONS

PERSONNEL WEAPONS ON CAMPUS

TEACHERS' REMOVAL OF STUDENT FROM CLASSROOM

STUDENT MAKE-UP WORK

TARDIES

CLOSED CAMPUS

PRIVACY OF STUDENTS' RECORDS/ DIRECTORY INFORMATION

STUDENT PUBLICATIONS AND THE DISTRIBUTION OF LITERATURE

CONTACT WITH STUDENTS WHILE AT SCHOOL

STUDENT VISITORS

STUDENT DISCIPLINE

PROHIBITED STUDENT CONDUCT

STUDENT DISRUPTION OF SCHOOL

STUDENT ASSAULT OR BATTERY

STUDENT WEAPONS AND DANGEROUS INSTRUMENTS

TOBACCO AND TOBACCO PRODUCTS WITH STUDENTS

DRUGS AND ALCOHOL WITH STUDENTS

STUDENT SUSPENSION FROM SCHOOL

[STUDENT EXPULSION](#)

[STUDENTS' VEHICLES](#)

[EDUCATIONAL PHILOSOPHY](#)

[USE OF COPYRIGHTED MATERIALS](#)

[COMPUTER SOFTWARE COPYRIGHT](#)

[RELIGION IN THE SCHOOLS](#)

[PROMOTION/RETENTION](#)

[HOMEWORK](#)

[GRADING](#)

[WEB SITE PRIVACY POLICY](#)

[VISITORS TO THE SCHOOLS](#)

[PERSONAL PROPERTY](#)

[FOOD SERVICE PREPAYMENT](#)

[CLASSIFIED PERSONNEL SALARY SCHEDULE](#)

[CLASSIFIED PERSONNEL EVALUATIONS](#)

[EMPLOYEE LEAVE - ORGAN DONOR](#)

[OVERTIME, COMPTIME, and COMPLYING WITH FLSA](#)

[SCHOOL BUS DRIVER'S USE OF CELL PHONES](#)

[CLASSIFIED PERSONNEL TERMINATION AND NON-RENEWAL](#)

[CASH RECEIPTS](#)

[CONTRACTS](#)

[CREDIT CARDS](#)

[PAYROLL](#)

[PURCHASING](#)

[PURCHASE ORDERS](#)

[RECEIVING MERCHANDISE-PACKING LIST](#)

[CHECK SCHEDULE](#)

[DISTRIBUTION OF CHECKS](#)

[FUNDRAISING](#)

[ACTIVITY ACCOUNT](#)

[EXPENSE REIMBURSEMENT](#)

WORK DAY AND DUTY DAY

2016- 2017 Parkers Chapel Schools - Salary Schedule								
Years Exp	Step Increments			Experience Increments				
	\$1,050		\$509	MSE	\$458		BSE	
	BSE + 0	BSE + 12	BSE + 24	MSE + 0	MSE + 12	MSE + 24	MSE + 30	
0	32,704	33,754	34,804	36,904	37,954	39,004	40,054	
1	33,162	34,212	35,262	37,413	38,463	39,513	40,563	
2	33,620	34,670	35,720	37,922	38,972	40,022	41,072	
3	34,078	35,128	36,178	38,431	39,481	40,531	41,581	
4	34,536	35,586	36,636	38,940	39,990	41,040	42,090	
5	34,994	36,044	37,094	39,449	40,499	41,549	42,599	
6	35,452	36,502	37,552	39,958	41,008	42,058	43,108	
7	35,910	36,960	38,010	40,467	41,517	42,567	43,617	
8	36,368	37,418	38,468	40,976	42,026	43,076	44,126	
9	36,826	37,876	38,926	41,485	42,535	43,585	44,635	
10	37,284	38,334	39,384	41,994	43,044	44,094	45,144	
11	37,742	38,792	39,842	42,503	43,553	44,603	45,653	
12	38,200	39,250	40,300	43,012	44,062	45,112	46,162	
13	38,658	39,708	40,758	43,521	44,571	45,621	46,671	
14	39,116	40,166	41,216	44,030	45,080	46,130	47,180	
15	39,574	40,624	41,674	44,539	45,589	46,639	47,689	
16	40,032	41,082	42,132	45,048	46,098	47,148	48,198	
17	40,490	41,540	42,590	45,557	46,607	47,657	48,707	
18	40,948	41,998	43,048	46,066	47,116	48,166	49,216	
19	41,406	42,456	43,506	46,575	47,625	48,675	49,725	
20	41,864	42,914	43,964	47,084	48,134	49,184	50,234	
190 Days per FTE								
Stipends				Contract length:			X-Days	

FBLA Sponsor			\$800	Athletic Director			40 days	
Yearbook			\$800	V.Football			25 days	
Beta Club			\$800	V.Basketball			10 days	
Quiz Bowl			\$800	Jr.Basketball			5 days	
Journalism			\$800	V.Cheerleading			10 days	
Jr. Sr. Banquet Sponsor			\$800	Jr.Cheerleading			5 days	
Parent Involvement			\$800	Lead Title I Teacher			10 days	
Student Council			\$800	High School Counselor			30 days	
Band Director			\$3,000	District Test Coordinator			10 days	
Asst. Band			\$2,000	Technology Coordinator			50 days	
Head Coach FB/BB/BA/SB/Cheer			\$3,000	Yearbook Sponsor			10 days	
Head Coach G/Tr/T			\$2,000	Golf			10 days	
Asst Coach FB/BB/Tr			\$1,500	Tennis			5 days	
Jr High Coach FB/BB/Cheer			\$1,500	Band			20 days	
Jr High Coach Tr			\$1,000					
Technology Coordinator			\$3,000	Contract length:			Days	Index:
Athletic Director			\$4,000	-----				
Driver's Ed (Min. \$1500)		\$100/student		Superintendent			240	1.82
Remediation/Summer School		\$25.00 hr.		High School Principal			240	1.24
Speech Pathology		\$50.00/hr		MS Prgm Director			240	1.35
Federal Programs		\$10,000		Elem Principal			240	1.19

Teachers who have earned additional, relevant degrees or sufficient college hours to warrant a salary change are responsible for reporting and supplying a transcript to the superintendent's office by September 1 for first semester or January 1 for second semester. The appropriate salary increase will be reflected in the first paycheck following the above listed deadlines. All salary changes will be on a "go forward" basis, and no back pay will be awarded.

Arkansas Professional Pathway to Educator Licensure (APPEL) Program

Each employee newly hired by the district to teach under the Arkansas Professional Pathway to Educator Licensure (APPEL) Program shall initially be placed on the salary schedule in the category of a bachelor's degree with no experience, unless the APPEL program employee has previous teaching experience which requires a different placement on the schedule. Upon receiving his/her initial or standard teaching license, the employee shall be moved to the position on the salary schedule that corresponds to the level of education degree earned by the employee which is relevant to the employee's position. Employee's degrees which are not relevant to the APPEL program's position shall not apply when determining his/her placement on the salary schedule. A teacher with a nontraditional provisional license shall be eligible for step increases with each successive year of employment, just as would a teacher possessing a traditional teaching license.

Licensed employee, seeking additional area or areas of licensure

Licensed employees who are working on an alternative licensure plan (AIP) to gain licensure in an additional area are entitled to placement on the salary schedule commensurate with their current license, level of education degree and years of experience. Degrees which are not relevant to the employee's position shall not apply when determining his/her placement on the salary schedule.

LICENSED PERSONNEL EVALUATIONS

Section One

For the purposes of this policy:

"Probationary principal" is a principal who has not completed three consecutive years of experience as a principal in an Arkansas school district. Any principal hired by the District who has completed his/her probationary period at another Arkansas district shall be considered probationary for the principal's first year of employment with the District. "Probationary principal" as used in this policy does not have the same meaning and legal significance as the words "probationary teacher" as it is used in the Teacher Fair Dismissal Act, A.C.A. 6-17-1501 et. seq. and therefore should only be applied in an evaluation context"

"Probationary teacher" has the same definition as A.C.A. § 6-17-1502, and as interpreted by case law. Due to the case law interpretations, "probationary" as used in this policy may or may not have the same meaning and legal significance as the word "probationary" as it is used in the Teacher Fair Dismissal Act statutes, A.C.A. 6-17-1501 et. seq.

"Teacher" has the same definition as A.C.A. § 6-17-2803(19).

Teachers shall be evaluated at least annually, as required by law, on a schedule prepared by each school's principal or designee.

Teacher and principal evaluations shall be conducted at least annually, as required by law. The superintendent or designee(s) shall develop procedures to govern the evaluation process and timelines for the evaluations.

Section Two

Teachers and principals will be evaluated for continued employment purposes under the provisions and timelines of the Teacher Evaluation Support System (TESS) and Leader Excellence and Development System (LEADS) respectively.

Teachers will be evaluated under the schedule and procedures required by TESS. Each school-year, the district will conduct a summative evaluation on all probationary teachers as well as any teacher currently on an "intensive support" improvement plan or who has successfully completed intensive support or participated in an improvement plan during the current or previous school-year. All teachers not covered in the previous sentence will have a summative evaluation at least once every three years.

All teachers who do not have a summative evaluation shall develop a professional growth plan approved by the teacher's evaluator and their job performance will be measured based on that professional growth plan. Principals will be evaluated using the evaluation rubric and other documentation of LEADS. Probationary principals, those principals who have been placed on an Intensive Growth Plan or participated in an improvement plan, and those principals who have not had a summative evaluation for two years will have a summative evaluation. **In** the years in which a principal does not have a summative evaluation, the principal shall complete a Professional Growth Plan and other documents as required under LEADS and their job performance will be measured based on that professional growth plan.

LICENSED MINORITY RECRUITMENT

It shall be the policy of the Board of Education that beginning with the 2004/2005 school year the School District shall prepare a minority teacher and administrator recruitment plan. The plan shall place emphasis on recruitment of African Americans and other members of minorities for teacher and administrator positions and on encouraging minority students to pursue a career in education. Recruitment plans shall cover the next ten (10) year period and set forth the goal of developing equity in employee composition that reflects racial and ethnic diversity. The plan shall be a part of the Equity Assistance Plan filed annually with the Equity Assistance Center of the State Department of Education and shall be updated annually for an additional ten (10) years.

The minority teacher and administrator recruitment plan shall include but not be limited to the following information:

1. The goals of the school District for the recruitment of minority teachers and administrators for the next school year and for the next ten (10) school years;
2. The steps the School District has taken to meet its goals;
3. The progress of the School District in recruiting minority teachers and administrators;
4. The measures the District will use to meet its employment goals;
5. If the District did not meet the District's goals for the previous reporting period, the District shall state the reasons for not meeting the goals;
6. The steps the District will take to encourage minority students to pursue a career in education;
7. The number and percentage of members of racial minorities who were employed as teachers or administrators in each of the last five (5) years; and
8. The racial composition of the student body and the racial composition of the residents of the District.

The District shall establish a minority teacher/administrator goal at least equal to the percentage of minority students of the District.

The District shall designate an employee to coordinate implementation of its recruitment plan. The designated Equity Assistance Coordinator in the District may serve as the coordinator of the District's recruitment plan.

PERSONNEL REDUCTION IN FORCE

SECTION ONE

The School Board acknowledges its authority to conduct a reduction in force (RIF) when a decrease in enrollment or other reason(s) make such a reduction necessary or desirable. A RIF will be conducted when the need for a reduction in the work force exceeds the normal rate of attrition for that portion of the staff that is in excess of the needs of the district as determined by the superintendent.

In effecting a reduction in force, the primary goals of the school district shall be: what is in the best interests of the students; to maintain accreditation in compliance with the Standards of Accreditation for Arkansas Public Schools and/or the North Central Association; and the needs of the district. A reduction in force will be implemented when the superintendent determines it is advisable to do so and shall be effected through non-renewal, termination, or both. Any reduction in force will be conducted by evaluating the needs and long- and short-term goals of the school district, and by examining the staffing of the district in each licensure area and/or, if applicable, specific grade levels.

If a reduction in force becomes necessary in a licensure area or specific grade level(s), the RIF shall be conducted for each licensure area and/or specific grade level on the basis of each employee's points as determined by the schedule contained in this policy. The teacher with the fewest points will be non-renewed or terminated first. In the event of a tie between two or more employees, the teacher(s) shall be retained whose name(s) appear first in the board's minutes of the date of hire. There is no right or implied right for any teacher to "bump" or displace any other teacher. Being employed fewer than 160 days in a school year shall not constitute a year. It is each teacher's individual responsibility to ensure his/her point totals are current in District files.

Points

- Years of service in the district-1 point per year

All licensed position years in the district count including non-continuous years.

Service in any position not requiring teacher licensure does not count toward years of service. Being employed fewer than 160 days in a school year shall not constitute a year.

- Graduate degree in any area of licensure in which the teacher will be ranked (only the highest level of points apply)
 - 1 point-Master's degree
 - 2 points-Master's degree plus thirty additional hours
 - 3 points-Educational specialist degree
 - 4 points-Doctoral degree
- National Board of Professional Teaching Standards certification-3 points
- Additional academic content areas of endorsement as identified by the State Board-1 point per area
- Licensure for teaching in a State Board identified shortage area-2 points
- Multiple areas and/or grade levels of licensure as identified by the State Board -1 point per additional area or grade level as applicable. For example, a P-4 license or a 5-8 social studies license is each worth one point.

When the District is conducting a RIF, all potentially affected teachers shall receive a listing of licensed personnel with corresponding point totals. Upon receipt of the list, each teacher has ten (10) working days

within which to appeal his or her assignment of points to the superintendent whose decision shall be final. Except for changes made pursuant to the appeals process, no changes will be made to the list that would affect a teacher's point total after the list is released.

A teacher with full licensure in a position shall prevail over a teacher with greater points but who is lacking full licensure in that subject area. "Full licensure" means an initial, or standard, noncontingent license to teach in a subject area or grade level, in contrast with a license that is provisional, temporary, or conditional on the fulfillment of additional course work or passing exams or any other requirement of the Arkansas Department of Education, other than the attainment of annual professional development training.

Pursuant to any reduction in force brought about by consolidation or annexation and as a part of it, the salaries of all teachers will be brought into compliance, by a partial RIF if necessary, with the receiving district's salary schedule. Further adjustments will be made if length of contract or job assignment changes. A partial RIF may also be conducted in conjunction with any job reassignment whether or not it is conducted in relation to an annexation or consolidation.

Recall:

There shall be no right of recall for any teacher.

SECTION TWO

The employees of any school district which annexes to, or consolidates with, the Parkers Chapel District will be subject to dismissal or retention at the discretion of the school board, on the recommendation of the superintendent, solely on the basis of need for such employees on the part of the Parkers Chapel District, if any, at the time of the annexation or consolidation, or within ninety (90) days after the effective date of the annexation or consolidation. The need for any employee of the annexed or consolidated school district shall be determined solely by the superintendent and school board of the Parkers Chapel District.

Such employees will not be considered as having any seniority within the Parkers Chapel District and may not claim an entitlement under a reduction in force to any position held by a Parkers Chapel District employee prior to, or at the time of, or prior to the expiration of ninety (90) days after the consolidation or annexation, if the notification provision below is undertaken by the superintendent.

The superintendent shall mail or have hand-delivered the notification to such employee of his intention to recommend non-renewal or termination pursuant to a reduction in force within ninety (90) days of the effective date of the annexation or consolidation in order to effect the provisions of this section of the Parkers Chapel District's reduction-in-force policy. Any such employees who are non renewed or terminated pursuant to Section Two are not subject to recall notwithstanding any language in any other section of this policy. Any such employees shall be paid at the rate for each person on the appropriate level on the salary schedule of the annexed or consolidated district during those ninety (90) days and/or through the completion of the reduction-in-force process.

This subsection of the reduction-in-force policy shall not be interpreted to provide that the superintendent must wait ninety (90) days from the effective date of the annexation or consolidation in order to issue notification of his intention to recommend dismissal through reduction-in-force, but merely that the superintendent has that period of time in which to issue notification so as to be able to invoke the provisions of this section.

The intention of this section is to ensure that those Parkers Chapel District employees who are employed prior to the annexation or consolidation shall not be displaced by employees of the annexed or consolidated district by application of the reduction-in-force policy.

PERSONNEL CONTRACT - RETURN

An employee shall have thirty (30) days from the date of the receipt of his contract for the following school year in which to return the contract, signed, to the office of the Superintendent. The date of receipt of the contract shall be presumed to be the date of a cover memo which will be attached to the contract.

Failure of an employee to return the signed contract to the office of the Superintendent within thirty (30) days of the receipt of the contract shall operate as a resignation by the employee. No further action on the part of the employee, the Superintendent, or the School Board shall be required in order to make the employee's resignation final.

PERSONNEL EMPLOYEE TRAINING

For the purposes of this policy, professional development (PD) means a set of coordinated, planned learning activities for District employees who are required to hold a current license issued by the State Board of Education as a condition of employment that:

- Is required by statute or the Arkansas Department of Education (ADE); or
- Meets the following criteria:
 - Improves the knowledge, skills, and effectiveness of teachers;
 - Improves the knowledge and skills of administrators and paraprofessionals concerning effective instructional strategies and methods;
 - Leads to improved student academic achievement; and
 - Is researched-based and standards-based.

All employees shall attend all local PD training sessions as directed by his/her supervisor.

The District shall develop and implement a professional development plan (PDP) for its licensed employees. The District's PDP shall, in part, align District resources to address the PD activities identified in each school's Arkansas Comprehensive School Improvement Plan (ACSIP) and incorporate the licensed employee's PDP. The plan shall describe how the District's categorical funds will be used to address deficiencies in student performance and any identified academic achievement gaps between groups of students. At the end of each school year, the District shall evaluate the PD activities' effectiveness at improving student performance and closing achievement gaps.

Each licensed employee shall receive a minimum of thirty-six (36) hours of PD annually to be fulfilled between July 1 and June 30. The District will require a licensed employee to receive more PD than the minimum when necessary to complete the licensed employee's PGP. All licensed employees are required to obtain thirty six (36) hours of approved PD each year over a five-year period as part of their licensure renewal requirements. PD hours earned in excess of each licensed employee's required number of hours in the designated year cannot be carried over to the next year.

Licensed employees who are prevented from obtaining the required PD hours due to their illness or the illness of an immediate family member as defined in A.C.A. § 6-17-1202 have until the end of the following school year to make up the deficient hours. Missed hours of PD shall be made up with PD that is substantially similar to that which was missed and can be obtained by any method, online or otherwise, approved by ADE. This time extension does not absolve the employee from also obtaining the following year's required hours of PD. Failure to obtain required PD or to make up missed PD could lead to disciplinary consequences, up to termination or nonrenewal of the contract of employment.

The goal of all PD activities shall be improved teaching and learning knowledge and skills that result in individual, team, school-wide, and District-wide improvement designed to ensure that all students demonstrate proficiency on the state's academic standards. The District's PD plan shall be research-based and standards-based and in alignment with applicable ADE Rules and/or Arkansas code.

Teachers, administrators, and paraprofessionals shall be involved in the design, implementation, and evaluation of the plan for their own PD offerings. The results of the evaluation made by the participants in each program shall be used to continuously improve the District's PD offerings and to revise the school improvement plan.

Flexible PD hours (flex hours) are those hours which an employee is allowed to substitute PD activities, different than those offered by the District, but which are still aligned to the employee's Individual Improvement Plan, Professional Growth Plan, or the school's ACSIP. The District shall determine on an annual basis how many, if any, flex hours of PD it will allow to be substituted for District scheduled PD offerings. The determination may be made at an individual building, a grade, or by subject basis. The District administration and the building principal have the authority to require attendance at specific PD activities. Employees must receive advance approval from the building principal for activities they wish to have qualify for flex PD hours. To the fullest extent possible, PD activities are to be scheduled and attended such that teachers do not miss their regular teaching assignments. Six (6) approved flex hours credited toward fulfilling the licensed employee's required hours shall equal one contract day. Hours of PD earned by an employee that are not at the request of the District and are in excess of the employee's required hours, or not pre-approved by the building principal, shall not be credited toward fulfilling the required number of contract days for that employee. Hours earned that count toward the licensed employee's required hours also count toward the required number of contract days for that employee. Employees shall be paid their daily rate of pay for PD hours earned at the request of the District that necessitate the employee work more than the number of days required by their contract.

Teachers and administrators who, for any reason, miss part or all of any scheduled PD activity they were required to attend, must make up the required hours in comparable activities which are to be pre-approved by the employee's appropriate supervisor.

To receive credit for his/her PD activity, each employee is responsible for obtaining and submitting documents of attendance, or completion for each PD activity he/she attends. Documentation is to be submitted to the building principal or designee. The District shall maintain all documents submitted by its employees that reflect completion of PD programs, whether such programs were provided by the District or an outside organization.

To the extent required by ADE Rules, employees will receive up to six (6) hours of educational technology professional development that is integrated within other professional development offerings, including taking or teaching an online or blended course.

The following PD shall count toward a licensed employee's required PD hours to the extent the District's or school's PD plan includes such training, is approved for flex hours, or is part of the employee's PDP and it provides him/her with knowledge and skills for teaching:

- Students with intellectual disabilities, including Autism Spectrum Disorder;
- Students with specific learning disorders, including dyslexia;
- Culturally and linguistically diverse students;
- Gifted students.

Beginning in the 2013-14 school-year and every fourth year thereafter, all mandated reporters and licensed personnel shall receive two (2) hours of PD related to child maltreatment required under A.C.A. § 6-61-

133(d)(e)(2). For the purposes of this training, "mandated reporters" includes school social workers, psychologists, and nurses.

Beginning in school-year 2014-15 and every fourth year thereafter, teachers shall receive two (2) hours of PD designed to enhance their understanding of effective parental involvement strategies.

Beginning in school-year 2014-15 and every fourth year thereafter, administrators shall receive two (2) hours of PD designed to enhance their understanding of effective parental involvement strategies-and the importance of administrative leadership in setting expectations and creating a climate conducive to parental participation.

Beginning in the 2015-16 school-year and every fourth year thereafter, all licensed personnel shall receive two (2) hours of PD in teen suicide awareness and prevention which may be obtained by self-review of suitable suicide prevention materials approved by ADE.

Beginning in the 2016-17 school-year and every fourth year thereafter, teachers who provide instruction in Arkansas history shall receive at least two (2) hours of PD in Arkansas history as part of the teacher's annual PD requirement.

Anticipated rescuers shall receive training in cardiopulmonary resuscitation and the use of automated external defibrillators as required by ADE Rule. Such training shall count toward the required annual hours of PD.

At least once every three (3) years, persons employed as athletic coaches shall receive training related to the recognition and management of concussions, dehydration, or other health emergencies as well as students' health and safety issues related to environmental issues and communicable diseases. The training may include a component on best practices for a coach to educate parents of students involved in athletics on sports safety.

All licensed personnel shall receive training related to compliance with the District's anti bullying policies.

For each administrator, the thirty six (36) hour PD requirement shall include training in data disaggregation, instructional leadership, and fiscal management. This training may include the Initial, Tier 1, and Tier 2 training required for Superintendents and other designees by ADE's Rules Governing the Arkansas Financial Accounting and Reporting System and Annual Training Requirements.

Building level administrators shall complete the credentialing assessment for the teacher evaluation PD program prior to conducting any summative teacher evaluations.

Teachers' PD shall meet the requirements prescribed under the Teacher Evaluation and Support System (TESS).

By the end of the 2014-15 school-year, teachers shall have received professional awareness on the characteristics of dyslexia and the evidence-based interventions and accommodations for dyslexia .

Teachers required by the superintendent, building principal, or their designee to take approved training related to teaching an advance placement class for a subject covered by the College Board and Educational Testing Service shall receive up to thirty (30) hours of credit toward the hours of PD required annually.

Licensed personnel may earn up to twelve (12) hours of PD for time they are required to spend in their instructional classroom, office or media center prior to the first day of student/teacher interaction **provided** the time is spent in accordance with state law and current ADE rules that deal with PD. The hours may be earned through online PD approved by the ADE provided the PD relates to the district's ACSIP and the teacher's professional growth plan. Licensed personnel who meet the requirements of this paragraph, the associated statute, and ADE Rules shall be entitled to one hour of PD for each hour of approved preparation.

Licensed personnel shall receive five (5) PD hours for each one-hour graduate level college course that meets the criteria identified in law and applicable ADE rules. A maximum of fifteen (15) such hours may be applied toward the thirty six (36) hours of PD required annually for license renewal.

In addition to other required PD, personnel of Alternative Learning Environments shall receive PD on classroom management and on the specific needs and characteristics of students in alternative education environments.

District administrators as well as licensed personnel selected by the superintendent or building principal shall receive training on the appropriate use of restraint and seclusion in accordance with ADE's Advisory Guidelines for the Use of Student Restraints in Public School or Educational Settings.

Employees who do not receive or furnish documentation of the required annual PD jeopardize the accreditation of their school and academic achievement of their students. Failure of an employee to receive his/her required annual hours of PD in any given year, unless due to illness as permitted by law, ADE Rule, and this policy, shall be grounds for disciplinary action up to and including termination.

Approved PD activities may include:

- Conferences/workshops/institutes;
- Mentoring/peer coaching;
- Study groups/learning teams;
- National Board for Professional Teaching Standards Certification;
- Distance and online learning (including Arkansas IDEAS;
- Internships;
- State./district /school programs;
- Approved college/university course work;
- Action research; and
- Individually guided (to be noted in the employee's PDP).

Approved PD activities that occur during the instructional day or outside the licensed employee's annual contract days may apply toward the annual minimum PD requirement.

PD activities shall relate to the following areas:

- Content (K-12);
- Instructional strategies;
- Assessment/data-driven decision making;
- Advocacy/leadership/fiscal management;
- Systemic change process;
- Standards, frameworks, and curriculum alignment;
- Supervision;
- Mentoring/peer coaching;
- Next generation learning/integrated technology;

- Principles of learning/developmental stages/diverse learners;
- Cognitive research;
- Parent involvement/academic planning and scholarship;
- Building a collaborative learning community;
- Student health and wellness; and
- The Code of Ethics for Arkansas Educators.

Additional activities eligible for PD credit, as included in the District, school, and licensed employee's PDP, include:

- School Fire Marshall program (A.C.A. § 6-10-110);
- Tornado safety drills (A.C.A. § 6-10-121);
- Literacy assessments and/or mathematics assessments (A.C.A. § 6-15-420);
- Test security and confidentiality (A.C.A. § 6-15-438);
- Emergency plans for terrorist attacks (A.C.A. § 6-15-1302);
- Teacher Excellence and Support System (A.C.A. § 6-17-2806);
- Student discipline training (A.C.A. § 6-18-502);
- Student Services Program (A.C.A. § 6-18-1004);
- Training required by ADE under academic, fiscal and facilities distress statutes and rules; and
- Annual active shooter drills (6-15-1303).

PERSONNEL DRUG TESTING

Scope of Policy

Each person hired for a position which allows or requires that the employee operate any type of motor vehicle which is privately owned and operated for compensation, or which is owned, leased or otherwise operated by, or for the benefit of the District, and is operated for the transportation of children to or from school or school sponsored activity shall undergo a physical examination, including a drug test. Each person's initial employment for a job entailing a safety sensitive function is conditioned upon the District receiving a negative drug test result for that employee. The offer of employment is also conditioned upon the employee's signing an authorization for the request for information by the District from the Commercial Driver Alcohol and Drug Testing Database.

Methods of Testing

The collection, testing methods and standards shall be determined by the agency or other medical organizations chosen by the School Board to conduct the collection and testing of samples. The drug and alcohol testing is to be conducted by a laboratory licensed pursuant to the most recent guidelines issued by the United States Department of Health and Human Services for such facilities. ("Mandatory Guidelines for Federal Workplace Drug Testing Programs").

Definition

Safety sensitive function includes:

- a)All time spent inspecting, servicing, and/or preparing the vehicle;
- b)All time spent driving the vehicle;
- c)All time spent loading or unloading the vehicle or supervising the loading or unloading of the vehicle; and
- d)All time spent repairing, obtaining assistance, or remaining in attendance upon a disabled vehicle.

Requirements

Employees shall be drug and alcohol free from the time the employee is required to be ready to work until the employee is relieved from the responsibility for performing work and/or any time they are performing a safety-sensitive function. In addition to the testing required as an initial condition of employment, employees shall submit to subsequent drug tests as required by law and/or regulation. Subsequent testing includes, and/or is triggered by, but is not limited to:

1. Random tests;
2. Testing in conjunction with an accident;
3. Receiving a citation for a moving traffic violation; and
4. Reasonable suspicion.

Prohibitions

- A. No driver shall report for duty or remain on duty requiring the performance of safety-sensitive functions while having an alcohol concentration of 0.04 or greater;
- B. No driver shall use alcohol while performing safety-sensitive functions;
- C. No driver shall perform safety-sensitive functions within four (4) hours after using alcohol;
- D. No driver required to take a post-accident alcohol test under # 2 above shall use alcohol for eight (8) hours following the accident or until he/she undergoes a post-accident alcohol test, whichever occurs first;
- E. No driver shall refuse to submit to an alcohol or drug test in conjunction with # 1, 2, and/or 4 above;
- F. No driver shall report for duty or remain on duty requiring the performance of safety-sensitive functions when using any controlled substance, except when used pursuant to the instructions of a licensed medical practitioner, knowledgeable of the driver's job responsibilities, who has advised the driver that the substance will not adversely affect the driver's ability to safely operate his/her vehicle. It is the employee's responsibility to inform his/her supervisor of the employee's use of such medication;
- G. No driver shall report for duty, remain on duty, or perform a safety-sensitive function if the driver tests positive or has adulterated or substituted a test specimen for controlled substances.

Violation of any of these prohibitions may lead to disciplinary action being taken against the employee, which could include termination or non-renewal.

Testing for Cause

Drivers involved in an accident in which there is a loss of another person's life shall be tested for alcohol and controlled substances as soon as practicable following the accident. Drivers shall also be tested for alcohol within eight (8) hours and for controlled substances within thirty two (32) hours following an accident for which they receive a citation for a moving traffic violation if the accident involved: 1) bodily injury to any person who, as a result of the injury, immediately receives medical treatment away from the scene of the accident, or 2) one or more motor vehicles incurs disabling damage as a result of the accident requiring the motor vehicle to be transported away from the scene by a tow truck or other motor vehicle.

Refusal to Submit

Refusal to submit to an alcohol or controlled substance test means that the driver

- Failed to appear for any test within a reasonable period of time as determined by the employer consistent with applicable Department of Transportation agency regulation;
- Failed to remain at the testing site until the testing process was completed;
- Failed to provide a urine specimen for any required drug test;
- Failed to provide a sufficient amount of urine without an adequate medical reason for the failure;
- Failed to undergo a medical examination as directed by the Medical Review Officer as part of the verification process for the previous listed reason;

- Failed or declined to submit to a second test that the employer or collector has directed the driver to take;
- Failed to cooperate with any of the testing process; and/or
- Adulterated or substituted a test result as reported by the Medical Review Officer.

Consequences for Violations

Drivers who engage in any conduct prohibited by this policy, who refuse to take a required drug or alcohol test, refuse to sign the request for information required by law, or who exceed the acceptable limits for the respective tests shall no longer be allowed to perform safety sensitive functions. Actions regarding their continued employment shall be taken in relation to their inability to perform these functions and could include termination or non-renewal of their contract of employment.

Drivers who exhibit signs of violating the prohibitions of this policy relating to alcohol or controlled substances shall not be allowed to perform or continue to perform safety-sensitive functions if they exhibit those signs during, just preceding, or just after the period of the work day that the driver is required to be in compliance with the provisions of this policy. This action shall be based on specific, contemporaneous, articulable observations concerning the behavior, speech, or body odors of the driver. The Superintendent or his/her designee shall require the driver to submit to "reasonable suspicion" tests for alcohol and controlled substances. The direction to submit to such tests must be made just before, just after, or during the time the driver is performing safety-sensitive functions. If circumstances prohibit the testing of the driver the Superintendent or his/her designee shall remove the driver from reporting for, or remaining on, duty for a minimum of 24 hours from the time the observation was made triggering the driver's removal from duty.

If the results for an alcohol test administered to a driver is equal to or greater than 0.02, but less than 0.04, the driver shall be prohibited from performing safety-sensitive functions for a period not less than 24 hours from the time the test was administered. Unless the loss of duty time triggers other employment consequence policies, no further other action against the driver is authorized by this policy for test results showing an alcohol concentration of less than 0.04.

PERSONNEL SICK LEAVE

Definitions

"Employee" is a full-time employee of the District.

"Sick Leave" is absence from work due to illness, whether by the employee or a member of the employee's immediate family, or due to a death in the family. The principal shall determine whether sick leave will be approved on the basis of a death outside the immediate family of the employee.

"Excessive Sick Leave" is absence from work, whether paid or unpaid, that exceeds twelve (12) days in a contract year for an employee and that is not excused pursuant to: District policy; the Family Medical Leave Act; a reasonable accommodation of disability under the American's With Disabilities Act; or due to a compensable Workers' Compensation claim.

"Grossly Excessive Sick Leave" is absence from work, whether paid or unpaid, that exceeds 10% of the employee's contract length and that is not excused pursuant to: District policy; the Family Medical Leave Act; a reasonable accommodation of disability under the American's With Disabilities Act; or due to a compensable Workers' Compensation claim.

"Current Sick Leave" means those days of sick leave for the current contract year, which leave is granted at the rate of one day of sick leave per contracted month, or major part thereof.

"Accumulated Sick Leave" is the total of unused sick leave, up to a maximum of ninety (90) days accrued from previous contract, but not used.

"Immediate family" means an employee's spouse, child, parent, or any other relative provided the other relative lives in the same household as the teacher.

Sick Leave

The principal has the discretion to approve sick leave for an employee to attend the funeral of a person who is not related to the employee, under circumstances deemed appropriate by the principal.

Employees who are adopting or seeking to adopt a minor child or minor children may use up to 15 sick leave days in any school year for absences relating to the adoption, including time needed for travel, time needed for home visits, time needed for document translation, submission or preparation, time spent with legal or adoption agency representatives, time spent in court and bonding time. See also, 3.32-LICENSED PERSONNEL FAMILY MEDICAL LEAVE, which also applies. Except for bonding time, documentation shall be provided by the employee upon request.

Pay for sick leave shall be at the employee's daily rate of pay, which is that employee's total contracted salary, divided by the number of days employed as reflected in the contract. Absences for illness in excess of the employee's accumulated and current sick leave shall result in a deduction from the employee's pay at the daily rate as defined above.

At the discretion of the principal (or Superintendent), and, if FMLA is applicable, subject to the certification or recertification provisions contained in policy 3.32-LICENSED PERSONNEL FAMILY MEDICAL LEAVE the District may require a written statement from the employee's physician documenting the employee's illness. Failure to provide such documentation of illness may result in sick leave not being paid, or in dismissal.

Should a teacher be absent frequently during a school year, and said absences are not subject to FMLA leave, and if such a pattern of absences continues, or is reasonably expected to continue, the Superintendent may relieve the teacher of his assignment (with Board approval) and assign the teacher substitute duty at the teacher's daily rate of pay. Should the teacher fail, or otherwise be unable, to report for substitute duty when called, the teacher will be charged a day of sick leave, if available or if unavailable, the teacher will lose a day's wages at his/her daily rate of pay. Temporary reassignment may also be offered or required in certain circumstances as provided in 3.32-LICENSED PERSONNEL FAMILY MEDICAL LEAVE.

If the employee's absences are excessive or grossly excessive as defined by this policy disciplinary action may be taken against the employee, which could include termination or nonrenewal of the contract of employment. The superintendent shall have the authority when making his/her determination to consider the totality of circumstances surrounding the absences and their impact on district operations or student services.

Sick Leave and Family Medical Leave Act (FMLA) Leave

When an employee takes sick leave, the District shall determine if the employee is eligible for FMLA leave and if the leave qualifies for FMLA leave. The District may request additional information from the employee to help make the applicability determination. If the employee is eligible for FMLA leave and if the leave qualifies under the FMLA, the District will notify the employee in writing, of the decision within five (5) workdays. If the circumstances for the leave as defined in policy 3.32- LICENSED PERSONNEL FAMIL Y MEDICAL

LEAVE don't change, the District is only required to notify the employee once of the determination regarding the applicability of sick leave and/or FMLA leave within any applicable twelve (12) month period. To the extent the employee has accrued paid sick, any sick leave taken that qualifies for FMLA leave shall be paid leave and charged against the employee's accrued leave including, once an employee exhausts his/her accrued sick leave, vacation or personal leave. See 3.32-LICENSED PERSONNEL FAMILY MEDICAL LEAVE.

Maternity Leave

Accrued sick leave may be used for maternity leave. Up to six weeks may be used for a normal birth. Up to eight weeks may be used for a birth requiring surgery.

LICENSED PERSONNEL PLANNING TIME

The superintendent is responsible for ensuring master schedules are created which determine the timing and duration of each teacher's planning and scheduled lunch periods. Planning time is for the purpose of scheduling conferences, instructional planning, and preparation. Each teacher will have the ability to schedule these activities during his/her designated planning time. Teachers may not leave campus during their planning time without prior permission from their building level supervisor.

The planning time shall be in increments of not less than forty (40) minutes and shall occur during the student instructional day unless a teacher requests, in writing, to have his/her planning time occur outside of the student instructional day. For the purposes of this policy, the student instructional day means the time that students are required to be present at school.

PERSONNEL PERSONAL AND PROFESSIONAL LEAVE

Personal Leave

For the district to function efficiently and have the necessary personnel present to effect a high achieving learning environment, employee absences need to be kept to a minimum. The district acknowledges that there are times during the school year when employees have personal business that needs to be addressed during the school day. Each full-time employee shall receive two (2) days of personal leave per contract year. The leave may be taken in increments of no less than 1/2 day.

Employees shall take personal leave or leave without pay for those absences which are not due to attendance at school functions which are related to their job duties and do not qualify for other types of leave.

School functions, for the purposes of this policy, means:

1. Athletic or academic events related to the school district; and
2. Meetings and conferences related to education.

For employees other than the superintendent, the determination of what activities meet the definition of a school function shall be made by the employee's immediate supervisor or designee. For the superintendent, the school board of directors shall determine what activities meet the definition of a school function. In no instance shall paid leave in excess of allotted vacation days and/or personal days be granted to an employee who is absent from work while receiving remuneration from another source as compensation for the reason for their absence.

Any employee desiring to take personal leave may do so by making a written request to his supervisor at least twenty-four (24) hours prior to the time of the requested leave. The twenty-four hour requirement may be waived by the supervisor when the supervisor deems it appropriate.

Employees who fail to report to work when their request for a personal day has been denied or who have exhausted their allotted personal days, shall lose their daily rate of pay for the day(s) missed (leave without pay). While there are instances where personal circumstances necessitate an employee's absence beyond the allotted days of sick and/or personal leave, any employee who requires leave without pay must receive advance permission (except in medical emergencies and/or as permitted by policy 3.32-LICENSED PERSONNEL FAMILY MEDICAL LEAVE) from their immediate supervisor. Failure to report to work without having received permission to be absent is grounds for discipline, up to and including termination.

A licensed employee shall have the option of using sick leave days as personal leave days equivalent to the number of years of experience they have in the Parkers Chapel School district, with a cap of three (3) days. This would make available up to five (5) personal leave days for that year.

No more than two (2) personal leave days can be used consecutively.

Personal leave does not accumulate from one contract year to the next.

Personal leave may not be taken the day before or the day after a holiday.

Professional Leave

"Professional Leave" is leave granted for the purpose of enabling an employee to participate in professional activities (e.g., teacher workshops or serving on professional committees) which can serve to improve the school District's instructional program or enhances the employee's ability to perform his duties. Professional leave will also be granted when a school District employee is subpoenaed for a matter arising out of the employee's employment with the school District. Any employee seeking professional leave must make a written request to his immediate supervisor, setting forth the information necessary for the supervisor to make an informed decision. The supervisor's decision is subject to review and overruling by the superintendent. Budgeting concerns and the potential benefit for the District's students will be taken into consideration in reviewing a request for professional leave.

Applications for professional leave should be made as soon as possible following the employee's discerning a need for such leave, but, in any case, no less than two (2) weeks before the requested leave is to begin, if possible.

If the employee does not receive or does not accept remuneration for his/her participation in the professional leave activity and a substitute is needed for the employee, the District shall pay the full cost of the substitute. If the employee receives and accepts remuneration for his/her participation in the professional leave activity (e.g. scholastic audits), the employee shall forfeit his/her daily rate of pay from the District for the time the employee misses. The cost of a substitute, if one is needed, shall be paid by the employee/District.

PERSONNEL RESPONSIBILITIES IN DEALING WITH SEX OFFENDERS ON CAMPUS

Individuals who have been convicted of certain sex crimes must register with law enforcement as sex offenders. Arkansas law places restrictions on sex offenders with a Level 1 sex offender having the least restrictions (lowest likelihood of committing another sex crime), and Level 4 sex offenders having the most restrictions (highest likelihood of committing another sex crime).

While Levels 1 and 2 place no restrictions prohibiting the individual's presence on a school campus, Levels 3 and 4 have specific prohibitions. These are specified in Policy 6.10-SEX OFFENDERS ON CAMPUS (MEGAN'S LAW) and it is the responsibility of district staff to know and understand the policy and, to the extent requested, aid school administrators in enforcing the restrictions placed on campus access to Level 3 and Level 4 sex offenders.

It is the intention of the board of directors that district staff not stigmatize students whose parents or guardians are sex offenders while taking necessary steps to safeguard the school community and comply with state law. Each school's administration should establish procedures so attention is not drawn to the accommodations necessary for registered sex offender parents or guardians.'

PERSONNEL PUBLIC OFFICE

An employee of the District who is elected to the Arkansas General Assembly or any elective or appointive public office (not legally constitutionally inconsistent with employment by a public school district) shall not be discharged or demoted as a result of such service.

No sick leave will be granted for the employee's participation in such public office. The employee may take personal leave or vacation (if applicable), if approved in advance by the Superintendent, during his absence. Prior to taking leave, and as soon as possible after the need for such leave is discerned by the employee, he must make written request for leave to the Superintendent, setting out, to the degree possible, the dates such leave is needed.

An employee who fraudulently requests sick leave for the purpose of taking leave to serve in public office may be subject to nonrenewal or termination of his employment contract.

PERSONNEL JURY DUTY

Employees are not subject to discharge, loss of sick leave, loss of vacation time or any other penalty due to absence from work for jury duty, upon giving reasonable notice to the District through the employee's immediate supervisor.

The employee must present the original (not a copy) summons to jury duty to his supervisor in order to confirm the reason for the requested absence.

Employees shall receive their regular pay from the District while serving jury duty, and shall reimburse the District from the stipend they receive for jury duty.

PERSONNEL LEAVE - INJURY FROM ASSAULT

Any teacher, who, while in the course of their employment, is injured by an assault or other violent act; while intervening in a student fight; while restraining a student; or while protecting a student from harm, shall be granted a leave of absence for up to one (1) year from the date of the injury, with full pay.

A leave of absence granted under this policy shall not be charged to the teacher's sick leave.

In order to obtain leave under this policy, the teacher must present documentation of the injury from a physician, with an estimate for time of recovery sufficient to enable the teacher to return to work, and written statements from witnesses (or other documentation as appropriate to a given incident) to prove that the incident occurred in the course of the teacher's employment.

LICENSED PERSONNEL REIMBURSEMENT FOR PURCHASE OF SUPPLIES

Prekindergarten through sixth grade teachers shall be allotted the amount required by law per student enrolled in the teacher's class to be used for the purchase of classroom supplies and class activities. The amount shall be credited to an account from which the teacher shall be reimbursed for his/her covered purchases to the extent funds are available in the account. For the purposes of this policy, pre-kindergarten through sixth grade teachers shall be eligible for the allotted supply reimbursement for those students enrolled in the teacher's class for more than 50% of the school day at the end of the first three months of the school year.

Teachers may purchase supplies and supplementary materials from the District at the District's cost to take advantage of the school's bulk buying power. To do so, teachers shall complete and have approved by principal a purchase order for supplies which will then be purchased on the teacher's behalf by the school and subtracted from the teacher's total supply and material allocation. Teachers may also purchase materials and supplies using their own funds and apply for reimbursement by submitting itemized receipts. Receipts totaling less than \$100 will be held until total receipts are equal to or greater than \$100. Supplies and materials purchased with school funds, or for which the teacher is reimbursed with school funds, are school property, and should remain on school property except to the extent they are used up or consumed or the purchased supplies and/or materials are intended/designed for use away from the school campus.

Reimbursement requests submitted by the first day of the month will be processed by the 15th of the month. Unused allotments shall not be carried over from one fiscal year to the next.

INSULT OR ABUSE OF LICENSED PERSONNEL

Employees are protected from abusive language and conduct by state law. An employee may report to the police any language which is calculated to:

1. Cause a breach of the peace;
2. Materially and substantially interfere with the operation of the school; and/or
3. Arouse the person to whom the language is addressed to anger, to the extent likely to cause imminent retaliation.

PERSONNEL OUTSIDE EMPLOYMENT

An employee of the District may not be employed in any other capacity during regular working hours. An employee may not accept employment outside of his District employment which will interfere, or otherwise be incompatible with the District employment, including normal duties outside the regular work day; nor shall an employee accept other employment which is inappropriate for an employee of a public school.

The Superintendent, or his designee(s), shall be responsible for determining whether outside employment is incompatible, conflicting or inappropriate.

PERSONNEL EMPLOYMENT

All prospective employees must fill out an application form provided by the District, in addition to any resume provided, all of which information is to be placed in the personnel file of those employed.

If the employee provides false or misleading information, or if he withholds information to the same effect, it may be grounds for dismissal. In particular, it will be considered a material misrepresentation and grounds for termination of contract of employment if an employee's licensure status is discovered to be other than as it was represented by an employee or applicant, either in writing on application materials or in the form of verbal assurances or statements made to the school district.

The Parkers Chapel School District is an equal opportunity employer and shall not discriminate on the grounds of race, color, religion, national origin, sex, age, or disability.

PERSONNEL TOBACCO USE

Smoking or use of tobacco or products containing tobacco in any form (including, but not limited to, cigarettes, cigars, chewing tobacco, and snuff) in or on any real property owned or leased by a District school, including school buses owned or leased by the District, or other school vehicles is prohibited.

With the exception of recognized tobacco cessation products, this policy's prohibition includes any tobacco or nicotine delivery system or product. Specifically, the prohibition includes any product that is manufactured, distributed, marketed, or sold as e-cigarettes, e-cigars, e-pips, or under any other name or descriptor.

Violation of this policy by employees shall be grounds for disciplinary action up to, and including, dismissal.

DRESS OF EMPLOYEES

Employees shall ensure that their dress and appearance are professional and appropriate to their positions. Employees are required to adhere to all dress codes that apply to students. The following must be adhered to:

- No T-shirts or 'jogging' attire, except on designated days
- No flip-flops, defined as flat, backless shoe with only one strap crossing the top of the foot that makes a "flopping" sound when walking.
- No tightly fitted garments, such as spandex, or garments with holes or faded by design, may be worn as an outside garment
- Only black, navy, or khaki long dress shorts may be worn as shorts (coaches may wear "coaching" shorts while conducting athletic practices but not in classrooms).

PERSONNEL POLITICAL ACTIVITY

Employees are free to engage in political activity outside of work hours to the extent that it does not affect the performance of their duties or adversely affect important working relationships.

It is specifically forbidden for employees to engage in political activities on the school grounds or during work hours. The following activities are forbidden on school property:

1. Using students for preparation or dissemination of campaign materials;
2. Distributing political materials;
3. Distributing or otherwise seeking signatures on petitions of any kind;
4. Posting political materials; and
5. Discussing political matters with students, in or out of the classroom, in other than circumstances appropriate to the nature of the Frameworks and/or curricular goals and objectives of the class.

PERSONNEL DEBTS

For the purposes of this policy, "garnishment" of a district employee is when the employee has lost a lawsuit to a judgment creditor who brought suit against a school district employee for an unpaid debt, has been awarded money damages as a result, and these damages are recoverable by filing a garnishment action against the employee's wages. For the purposes of this policy, the word "garnishment" excludes such things as child support, student loan or IRS liens or voluntary deductions levied against an employee's wages.

All employees are expected to meet their financial obligations. If an employee writes "hot" checks or has his income garnished by a judgment creditor, dismissal may result.

An employee will not be dismissed for having been the subject of one (1) garnishment. However, a second or third garnishment may result in dismissal.

At the discretion of the Superintendent, he or his designee may meet with an employee who has received a second garnishment for the purpose of warning the employee that a third garnishment will result in a recommendation of dismissal to the School Board.

At the discretion of the Superintendent, a second garnishment may be used as a basis for a recommended dismissal. The Superintendent may take into consideration other factors in deciding whether to recommend dismissal based on a second garnishment. Those factors may include, but are not limited to, the amount of the debt, the time between the first and the second garnishment, and other financial problems which come to the attention of the District.

PERSONNEL GRIEVANCES

The purpose of this policy is to provide an orderly process for employees to resolve, at the lowest possible level, their concerns related to the personnel policies or salary payments of this District.

Definitions

Grievance: a claim or concern related to the interpretation, application, or claimed violation of the personnel policies, including salary schedules, federal or state laws and regulations, or terms or conditions of employment, raised by an individual employee of this school District. Other matters for which the means of resolution are provided or foreclosed by statute or administrative procedures shall not be considered grievances. Specifically, no grievance may be entertained against a supervisor for directing, instructing, reprimanding, or "writing up" an employee under his/her supervision. A group of employees who have the same grievance may file a group grievance.

Group Grievance: A grievance may be filed as a group grievance if it meets the following criteria: (meeting the criteria does not ensure that the subject of the grievance is, in fact, grievable)

1. More than one individual has interest in the matter; and
2. The group has a well-defined common interest in the facts and/or circumstances of the grievance; and
3. The group has designated an employee spokesperson to meet with administration and/or the board; and
4. All individuals within the group are requesting the same relief.

Employee: any person employed under a written contract by this school District.

Immediate Supervisor: the person immediately superior to an employee who directs and supervises the work of that employee.

Working day: Any weekday other than a holiday whether or not the employee under the provisions of their contract is scheduled to work or whether they are currently under contract.

Process

Level One: An employee who believes that he/she has a grievance shall inform that employee's immediate supervisor that the employee has a potential grievance and discuss the matter with the supervisor within five working days of the occurrence of the grievance. The supervisor shall offer the employee an opportunity to have a witness or representative who is not a member of the employee's immediate family present at their conference. (The five-day requirement does not apply to grievances concerning back pay.) If the grievance is not advanced to Level Two within five working days following the conference, the matter will be considered resolved and the employee shall have no further right with respect to said grievance.

If the grievance cannot be resolved by the immediate supervisor, the employee can advance the grievance to Level Two. To do this, the employee must complete the top half of the Level Two Grievance Form within five working days of the discussion with the immediate supervisor, citing the manner in which the specific personnel policy was violated that has given rise to the grievance, and submit the Grievance Form to his/her immediate supervisor. The supervisor will have ten working days to respond to the grievance using the bottom half of the Level Two Grievance Form which he/she will submit to the building principal or, in the event that the employee's immediate supervisor is the building principal, the superintendent.

Level Two (when appeal is to the building principal): Upon receipt of a Level Two Grievance Form (see Policy 3.25f for form), the building principal will have ten working days to schedule a conference with the employee filing the grievance. The principal shall offer the employee an opportunity to have a witness or representative who is not a member of the employee's immediate family present at their conference. After the conference, the principal will have ten working days in which to deliver a written response to the grievance to the employee. If the grievance is not advanced to Level Three within five working days the matter will be considered resolved and the employee shall have no further right with respect to said grievance.

Level Two (when appeal is to the superintendent): Upon receipt of a Level Two Grievance Form, the superintendent will have ten working days to schedule a conference with the employee filing the grievance. The superintendent shall offer the employee an opportunity to have a witness or representative who is not a member of the employee's immediate family present at their conference. After the conference, the superintendent will have ten working days in which to deliver a written response to the grievance to the employee.

Level Three: If the proper recipient of the Level Two Grievance was the building principal, and the employee remains unsatisfied with the written response to the grievance, the employee may advance the grievance to the superintendent by submitting a copy of the Level Two Grievance Form and the principal's reply to the superintendent within five working days of his/her receipt of the principal's reply. The superintendent will have ten working days to schedule a conference with the employee filing the grievance. The superintendent shall offer the employee an opportunity to have a witness or representative who is not a member of the employee's immediate family present at their conference. After the conference, the superintendent will have ten working days in which to deliver a written response to the grievance to the employee.

Appeal to the Board of Directors: An employee who remains unsatisfied by the written response of the superintendent may appeal the superintendent's decision to the Board of Education within five working days of

his/her receipt of the Superintendent's written response by submitting a written request for a board hearing to the superintendent. If the grievance is not appealed to the Board of Directors within five working days of his/her receipt of the superintendent's response, the matter will be considered resolved and the employee shall have no further right with respect to said grievance.

The school board will address the grievance at the next regular meeting of the school board, unless the employee agrees in writing to an alternate date for the hearing. After reviewing the Level Two Grievance Form and the superintendent's reply, the board will decide if the grievance, on its face, is grievable under District policy. If the grievance is presented as a "group grievance," the Board shall first determine if the composition of the group meets the definition of a "group grievance." If the Board determines that it is a group grievance, the Board shall then determine whether the matter raised is grievable. If the Board rules the composition of the group does not meet the definition of a group grievance, or the grievance, whether group or individual, is not grievable, the matter shall be considered closed. (Individuals within the disallowed group may choose to subsequently refile their grievance as an individual grievance beginning with Level One of the process.) If the Board rules the grievance to be grievable, they shall immediately commence a hearing on the grievance. All parties have the right to representation by a person of their own choosing who is not a member of the employee's immediate family at the appeal hearing before the Board of Directors. The employee shall have no less than 90 minutes to present his/her grievance unless a shorter period is agreed to by the employee, and both parties shall have the opportunity to present and question witnesses. The hearing shall be open to the public unless the employee requests a private hearing. If the hearing is open, the parent or guardian of any student under the age of eighteen years who gives testimony may elect to have the student's testimony given in closed session. At the conclusion of the hearing, if the hearing was closed, the Board of Directors may excuse all parties except board members and deliberate, by themselves, on the hearing. At the conclusion of an open hearing, board deliberations shall also be in open session unless the board is deliberating the employment, appointment, promotion, demotion, disciplining, or resignation of the employee. A decision on the grievance shall be announced no later than the next regular board meeting.

Records

Records related to grievances will be filed separately and will not be kept in, or made part of, the personnel file of any employee.

Reprisals

No reprisals of any kind will be taken or tolerated against any employee because he/she has filed or advanced a grievance under this policy.

PERSONNEL SEXUAL HARASSMENT

The Parkers Chapel School District is committed to having an academic and work environment in which all students and employees are treated with respect and dignity. Student achievement and amicable working relationships are best attained in an atmosphere of equal educational and employment opportunity that is free of discrimination. Sexual harassment is a form of discrimination that undermines the integrity of the educational environment and will not be tolerated.

Believing that prevention is the best policy, the district will periodically inform students and employees about the nature of sexual harassment, the procedures for registering a complaint, and the possible redress that is available. The information will stress that the district does not tolerate sexual harassment and that students and employees can report inappropriate behavior of a sexual nature without fear of adverse consequences.

It shall be a violation of this policy for any student or employee to be subjected to, or to subject another person to, sexual harassment as defined in this policy. Any employee found, after an investigation, to have engaged in sexual harassment will be subject to disciplinary action up to, and including, termination.

Sexual harassment refers to unwelcome sexual advances, requests for sexual favors, or other personally offensive verbal, visual, or physical conduct of a sexual nature made by someone under any of the following conditions:

- 1.Submission to the conduct is made, either explicitly or implicitly, a term or condition of an individual's education or employment;
- 2.Submission to, or rejection of, such conduct by an individual is used as the basis for academic or employment decisions affecting that individual; and/or
- 3.Such conduct has the purpose or effect of substantially interfering with an individual's academic or work performance or creates an intimidating, hostile, or offensive academic or work environment.

The terms "intimidating," "hostile," and "offensive" include conduct of a sexual nature which has the effect of humiliation or embarrassment and is sufficiently severe, persistent, or pervasive that it limits the student's or employee's ability to participate in, or benefit from, an educational program or activity or their employment environment.

Within the educational or work environment, sexual harassment is prohibited between any of the following: students; employees and students; non-employees and students; employees; employees and non-employees.

Actionable sexual harassment is generally established when an individual is exposed to a pattern of objectionable behaviors or when a single, serious act is committed. What is, or is not, sexual harassment will depend upon all of the surrounding circumstances. Depending upon such circumstances, examples of sexual harassment include, but are not are not limited to: unwelcome touching; crude jokes or pictures; discussions of sexual experiences; pressure for sexual activity; intimidation by words, actions, insults, or name calling; teasing related to sexual characteristics or the belief or perception that an individual is not conforming to expected gender roles or conduct or is homosexual, regardless of whether or not the individual self-identifies as homosexual; and spreading rumors related to a person's alleged sexual activities.

Employees who believe they have been subjected to sexual harassment are encouraged to file a complaint by contacting their immediate supervisor, administrator, or Title IX coordinator who will assist them in the complaint process. Under no circumstances shall an employee be required to first report allegations of sexual harassment to a school contact person if that person is the individual who is accused of the harassment. To the extent possible, complaints will be treated in a confidential manner. Limited disclosure may be necessary in order to complete a thorough investigation.

Employees who file a complaint of sexual harassment will not be subject to retaliation or reprisal in any form. Employees who knowingly fabricate allegations of sexual harassment shall be subject to disciplinary action up to and including termination.

Individuals who withhold information, purposely provide inaccurate facts, or otherwise hinder an investigation of sexual harassment shall be subject to disciplinary action up to and including termination.

SEXUAL HARASSMENT REPORTING PROCEDURES

Any person who believes he/she has been the victim of sexual harassment by a student or an employee of the District, or any third party with knowledge or belief of conduct which may constitute sexual harassment should report the alleged acts immediately to the Title IX Coordinator, Mrs. Sonya Feemster, 401 Parkers Chapel Rd., 863-0209; the principal or the building or the Superintendent. The District encourages the reporting party or complainant to use the report form in Policy 3.26F available from the principal or counselor of each school or available from the administration office.

1. The building principal is the person responsible for receiving oral or written reports of sexual harassment at the building level.
2. Upon receipt of a report, the principal must notify the Superintendent immediately without screening or investigating the report.
3. If the report was given verbally, the principal shall reduce it to a written form within 24 hours and forward it to the Superintendent. Failure to forward any sexual harassment report or complaint as provided herein will result in disciplinary action. If the complaint involves the building principal, the complaint shall be filed directly with the Superintendent.
4. Submission of a complaint or report of sexual harassment will not affect the individual's future employment, grades or work assignments.
5. Use of formal reporting forms is not mandatory.
6. The District will respect the confidentiality of the complainant and the individual(s) against whom the complaint is filed as much as possible, consistent with the District's legal obligations and the necessity to investigate allegations of harassment and take disciplinary action when the conduct has occurred.

Investigation and Recommendation:

By authority of the District, the Superintendent, upon receipt of a report or complaint alleging sexual harassment, shall immediately authorize an investigation. This investigation may be conducted by District officials or by a third party designated by the District. The investigating party shall provide a written report of the status of the investigation within 10 days to the Superintendent.

In determining whether alleged conduct constitutes sexual harassment, the District should consider the surrounding circumstances, the nature of the sexual advances, relationships between the parties involved and the context in which the alleged incidents occurred.

The investigation may consist of personal interviews with the complainant, the individual(s) against whom the complaint is filed, and others who may have knowledge of the alleged incident(s) or circumstances giving rise to the complaint. The investigation may also consist of any other methods and documents deemed pertinent by the investigator.

In addition, the District may take immediate steps, at its discretion, to protect the complainant, students and employees, pending completion of an investigation of alleged sexual harassment.

School District Action:

Upon receipt of a recommendation that the complaint is valid, the District will take such action as appropriate, based on the results of the investigation. Notice will be given to the parties involved as to the outcome of the complaint and steps will be taken to prevent recurrence of any harassment and to correct its discriminatory effects on the complainant and others, if appropriate.

LICENSED PERSONNEL SUPERVISION OF STUDENTS

All District personnel are expected to conscientiously execute their responsibilities to promote the health, safety, and welfare of the District's students under their care. The Superintendent shall direct all principals to establish regulations ensuring faculty supervision of students throughout the school day and at extracurricular activities.

PERSONNEL COMPUTER USE POLICY

The Parkers Chapel School District provides computers and/or computer Internet access for many employees, to assist employees in performing work related tasks. Employees are advised that they enjoy no expectation of privacy in any aspect of their computer use, including email, and that under Arkansas law, both email and computer use records maintained by the district are subject to disclosure under the Freedom of Information Act.

Passwords or security procedures are to be used as assigned, and confidentiality of student records is to be maintained at all times. Employees must not disable or bypass security procedures, compromise, attempt to compromise, or defeat the district's technology network security, alter data without authorization, disclose passwords to other staff members or students, or grant students access to any computer not designated for student use. It is the policy of this school district to equip each computer with Internet filtering software designed to prevent users from accessing material that is harmful to minors. The designated District Technology Administrator or designee may authorize the disabling of the filter to enable access by an adult for a bona fide research or other lawful purpose.

Employees who misuse district-owned computers in any way, including excessive personal use, using computers for personal use during instructional time, using computers to violate any other policy, knowingly or negligently allowing unauthorized access, or using the computers to access or create sexually explicit or pornographic text or graphics, will face disciplinary action, up to and including termination or non-renewal of the employment contract.

PERSONNEL EMPLOYEE INTERNET USE AGREEMENT

Internet access, technology, and e-mail are available in the Parkers Chapel School District. The term technology includes, but is not limited to: all computers; printers; digital cameras; document cameras; interactive white boards; projectors; scanners; peripheral equipment; networks; internet resources; all forms of Web-based systems; fax equipment; phones; software; files and user generated files; television; communication devices including electronic mail; as well as the supplies used to maintain technology. The internet offers world wide resources that are diverse and unique to both students and teachers/staff. Our goal in providing this service is to promote educational excellence in schools by facilitating resource sharing, innovation, and communication between academic and research organizations.

With access to computers and people all over the world also comes the availability of material that may not be considered of educational value in the context of the school setting. Parkers Chapel School District and the Arkansas Public School Computer Network (APSCN) have taken precautions to restrict access to controversial materials. However, on a global network it is impossible to control all materials and precautions should be taken.

The Parkers Chapel Schools, in combination with the Internet access provider, will utilize restriction methods to filter software or other technologies as stated in CIPA (Children's Internet Protection Act) to prevent

students from accessing visuals that are obscene, child pornography, or harmful to minors. The district will also monitor students through direct observation and/or other means, to ensure that students are not accessing inappropriate materials. The term “harmful to minors” is defined by the Communications Act – Title 47 US Code. As a faculty/staff member it is part of your responsibility to help monitor the enforcement of CIPA for the district. Internet access is coordinated through APSCN, a complex association of government agencies, and regional and state networks. The smooth operation of the network relies upon the proper conduct of its users who must adhere to strict guidelines. In general, this requires efficient, ethical and legal utilization of the network resources. If a Parkers Chapel School District user violates any of these provisions, he or she will receive a warning and his or her account may be terminated and future access could be denied. Continued violations could result in disciplinary action and/or suspension.

Staff members will instruct/educate their students and/or minors and will monitor and/or restrict students on the following: Appropriate online behavior, including interacting with other individuals on social websites; cyberbullying awareness; cyberbullying response; restricting access by minors to inappropriate matter on the Internet and World Wide Web; the safety and security of minors when using electronic mail, chat rooms, and other forms of direct electronic communications; unauthorized access including “hacking” and other unlawful activities by minors online; unauthorized disclosure, use, and dissemination of personal information regarding minors; measures designed to restrict minors’ access to materials harmful to minors (both state level and local level filters/site blockers will be maintained). The signatures at the end of this document are legally binding and indicates the parties who sign have read the terms and conditions carefully and understand their significance.

▪ Internet and e-mail Terms and Conditions ▪

All equipment and storage of information on the school’s equipment is *subject to review and monitoring*. The use of the Internet is a privilege, not a right, and inappropriate use will result in a cancellation of those privileges. Also, the system administrator may close any account at any time they deem advisable. The system administrators retain the right to review, edit, or remove any materials received, transmitted, or stored on the user accounts and equipment. Remember that all computers, equipment and materials are the property of the Parkers Chapel School District and as such may be replaced or removed without notice. It is the responsibility of the user to maintain **proper backups** and updates for the data and software installed on their computers. Please maintain up to date Anti-virus and Anti-Spam/Anti-Ad programs as purchased and/or used by the District. Transmission of any material in violation of any U.S. or state regulation is prohibited. This includes, but is not limited to: copyrighted material, threatening or obscene material, or material protected by trade secret. Use of school resources for commercial activities, product advertisement or political lobbying is not acceptable. E-mail is NOT guaranteed to be private and is subject to review and monitoring. Messages of an illegal nature may be reported to the authorities. Vandalism will result in cancellation of privileges and may lead to civil or criminal prosecution. Vandalism is defined as any malicious attempt to harm or destroy data of another user, the Internet, agencies or other networks connected to the school’s local area network. This includes, but is not limited to, the uploading or creation of computer viruses or worms. Refer to Appendix I of the Personnel Handbook for additional information/restrictions.

Users are responsible for all activity that uses their network (Internet) account. Guard your account and passwords. Passwords will contain at least one number and one letter and be at least 6 characters in length. Try not to use common names or words, some viruses use these to crack accounts for spreading to other computers. Disclaimer: Parkers Chapel School District makes no warranties of any kind, whether expressed or implied, for the service it is providing.

Parkers Chapel School District will not be responsible for any damage you suffer. This includes, but is not limited to, loss of data resulting from delays, non-deliveries, mis-deliveries, or service interruptions caused by

its own negligence or your errors or omissions. Use of any information obtained via the Internet is at your own risk. Parkers Chapel School District specifically denies any responsibility for the accuracy or quality of information obtained through its services.

Appendix I

STAFF ACCESS TO NETWORKED INFORMATION RESOURCES

The network is provided for staff and students to conduct research and communicate with others. Communications over the network are often public in nature therefore general rules and standards for professional behavior and communications will apply. Network administrators will review files and communications to maintain system integrity and to ensure that staff members are using the system responsibly. Users should not expect that files stored on district servers will be private.

The following behaviors are not permitted on district networks:

- Sharing confidential information on students or employees is permitted only in accordance with District guidelines.
- Sending or displaying offensive messages or pictures.
- Assisting a campaign for election of any person to any office or for the promotion of, or opposition to any ballot proposition.
- Using obscene language.
- Harassing, insulting or attacking others.
- Engaging in practices that threaten the network (e.g., loading files that may introduce a virus).
- Violating copyright laws.
- Unauthorized use of others' passwords.
- Trespassing in others' folders, documents, or files.
- Intentionally wasting limited resources.
- Employing the network for personal gain.

The Network Supervisor will report inappropriate behaviors to the employee's supervisor who will take appropriate disciplinary action. Any other reports of inappropriate behavior, violations, or complaints will be routed to the employee's supervisor for appropriate action. Violations may result in a loss of access and/or disciplinary action. When applicable, law enforcement agencies may be involved. A copy of this policy is included in the Personnel Handbook

PERSONNEL SCHOOL CALENDAR

The superintendent shall present to the personnel policies committee (PPC) a school calendar. The superintendent, in developing the calendar, shall accept and consider recommendations from any staff member or group wishing to make calendar proposals. The PPC shall have the time prescribed by law and/or policy in which to make any suggested changes before the board may vote to adopt the calendar.

The District shall not establish a school calendar that interferes with any ACTAAP scheduled testing that might jeopardize or limit the valid testing and comparison of student learning gains.

The Parkers Chapel School District shall operate by the following calendar for 2016/17

August 15	1 st day of school for Students
September 5	Labor Day (no students)
September 19	Parent/Teacher Conferences ☺ 1:30 – 6:00 pm
October 10.....	Teacher In-Service (no students)
October 14	End of 1 st 9 weeks
November 21 – 25	Thanksgiving Holidays
December 16	End of 2 nd 9 Weeks
December 19 – 30	Christmas Holidays
January 2.....	Teacher In-Service (no students)
January 3.....	Start 2 nd Semester
January 16	MLK Day (no students)
February 2.....	Parent/Teacher Conferences ☺ 1:30 – 6:00 pm
February 17.....	Teacher In-Service (no students)
February 20	President’s Day (no students)
March 10.....	End of 3 rd 9 Weeks
March 20-24	Spring Break
April 14.....	Student Holiday (no students)
May 17.....	Baccalaureate
May 18.....	Graduation
May 23.....	Kindergarten Graduation
May 26	End of 4 th 9 Weeks

Snow Days (if needed) – Jan 16, Feb 17, Feb 20, April 14, May 29

This calendar contains 178 student days and 190 teacher days Professional Development Calendar will begin June 1 and will end May 31st.

PARENT-TEACHER COMMUNICATION

The District recognizes the importance of communication between teachers and parents/legal guardians. To help promote positive communication, parent/teacher conferences shall be held once each semester. Parent-teacher conferences are encouraged and may be requested by parents or guardians when they feel they need to discuss their child’s progress with his/her teacher. Teachers are required to communicate during the school year with the parent(s), legal guardian(s), or care-giving adult or adults in a student’s home to discuss the student’s academic progress unless the student has been placed in the custody of the Department of Human Services and the school has received a court order prohibiting parent or legal guardian participation in parent/teacher conferences. More frequent communication is required with the parent(s) or legal guardian(s) of students who are performing below grade level.

All parent/teacher conferences shall be scheduled at a time and place to best accommodate those

participating in the conference. Each teacher shall document the participation or non-participation of parent(s)/legal guardian(s) for each scheduled conference.

If a student is to be retained at any grade level, notice of, and the reasons for retention shall be communicated promptly in a personal conference.

DRUG FREE WORKPLACE

The conduct of district staff plays a vital role in the social and behavioral development of our students. It is equally important that the staff have a safe, healthful, and professional environment in which to work. To help promote both interests, the district shall have a drug free workplace. It is, therefore, the district's policy that district employees are prohibited from the unlawful manufacture, distribution, dispensation, possession, or use of controlled substances, illegal drugs, inhalants, alcohol, as well as inappropriate or illegal use of prescription drugs. Such actions are prohibited both while at work or in the performance of official duties while off district property; violations of this policy will subject the employee to discipline, up to and including termination.

To help promote a drug free workplace, the district shall establish a drug-free awareness program to inform employees about the dangers of drug abuse in the workplace, the district's policy of maintaining a drug-free workplace, any available drug counseling, rehabilitation, and employee assistance abuse programs, and the penalties that may be imposed upon employees for drug abuse violations. Such services are available from the following sources and/or services:

- ☐ South Arkansas Regional Health Center – Victims and their families can receive a full range of specialized services
- ☐ Pamphlets/videos from the office of the Arkansas Division of Alcohol & Drug Abuse Prevention are in the H. S. Counselor's office

Should any employee be found to have been under the influence of, or in illegal possession of, any illegal drug, or controlled substance, whether or not engaged in any school or school-related activity, and the behavior of the employee, if under the influence, is such that it is inappropriate for a school employee in the opinion of the superintendent, the employee may be subject to discipline, up to and including termination. This policy also applies to those employees who are under the influence of alcohol while on campus or at school sponsored functions, including athletic events.

Possession, use or distribution of drug paraphernalia by any employee, whether or not engaged in school or school-related activities, may subject the employee to discipline, up to and including termination. Possession in one's vehicle or in an area subject to the employee's control will be considered to be possession as though the substance were on the employee's person.

It shall not be necessary for an employee to test at a level demonstrating intoxication by any substance in order to be subject to the terms of this policy. Any physical manifestation of being under the influence of a substance may subject an employee to the terms of this policy. Those physical manifestations include, but are not limited to: unsteadiness; slurred speech; dilated or constricted pupils; incoherent and/or irrational speech; or the presence of an odor associated with a prohibited substance on one's breath or clothing.

Should an employee desire to provide the District with the results of a blood, breath or urine analysis, such results will be taken into account by the District only if the sample is provided within a time range that could provide meaningful results and only by a testing agency chosen or approved by the District. The District shall

not request that the employee be tested, and the expense for such voluntary testing shall be borne by the employee.

Any employee who is charged with a violation of any state or federal law relating to the possession, use or distribution of illegal drugs, other controlled substances or alcohol, or of drug paraphernalia, must notify his immediate supervisor within five (5) week days (i.e., Monday through Friday, inclusive, excluding holidays) of being so charged. The supervisor who is notified of such a charge shall notify the Superintendent immediately. If the supervisor is not available to the employee, the employee shall notify the Superintendent within the five (5) day period.

Any employee so charged is subject to discipline, up to and including termination. However, the failure of an employee to notify his supervisor or the Superintendent of having been so charged shall result in that employee being recommended for termination by the Superintendent.

Any employee convicted of any criminal drug statute violation for an offense that occurred while at work or in the performance of official duties while off district property shall report the conviction within five (5) calendar days to the superintendent. Within 10 days of receiving such notification, whether from the employee or any other source, the district shall notify federal granting agencies from which it receives funds of the conviction.

Compliance with these requirements and prohibitions is mandatory and is a condition of employment. Any employee convicted of any state or federal law relating to the possession, use or distribution of illegal drugs, other controlled substances, or of drug paraphernalia, shall be recommended for termination.

Any employee who must take prescription medication at the direction of the employee's physician, and who is impaired by the prescription medication such that he cannot properly perform his duties shall not report for duty. Any employee who reports for duty and is so impaired, as determined by his supervisor, will be sent home. The employee shall be given sick leave, if owed any. The District or employee will provide transportation for the employee, and the employee may not leave campus while operating any vehicle. It is the responsibility of the employee to contact his physician in order to adjust the medication, if possible, so that the employee may return to his job unimpaired. Should the employee attempt to return to work while impaired by prescription medications, for which the employee has a prescription, he will, again, be sent home and given sick leave, if owed any. Should the employee attempt to return to work while impaired by prescription medication a third time the employee may be subject to discipline, up to and including a recommendation of termination.

Any employee who possesses, uses, distributes or is under the influence of a prescription medication obtained by a means other than his own current prescription shall be treated as though he was in possession, possession with intent to deliver, or under the influence, etc. of an illegal substance. An illegal drug or other substance is one which is (a) not legally obtainable; or (b) one which is legally obtainable, but which has been obtained illegally. The District may require an employee to provide proof from his physician and/or pharmacist that the employee is lawfully able to receive such medication. Failure to provide such proof, to the satisfaction of the Superintendent, may result in discipline, up to and including a recommendation of termination.

PERSONNEL FAMILY MEDICAL LEAVE

The Family and Medical Leave Act (FMLA) leave offers job protection for what might otherwise be considered excessive absences. Employees need to carefully comply with this policy to ensure they do not lose FMLA protection due to inaction or failure to provide the District with needed

information. The FMLA provides up to 12 work weeks (or in some cases 26 weeks) of job-protected leave to eligible employees with absences that qualify under the FMLA. While an employee can request FMLA leave and has a duty to inform the District as provided in this policy of foreseeable absences that may qualify for FMLA leave, it is the District's ultimate responsibility to identify qualifying absences as FMLA or non-FMLA. FMLA leave is unpaid, except to the extent that paid leave applies to any given absence as governed by the FMLA and this policy.

SECTION ONE

Definitions:

Eligible Employee: is an employee who has been employed by the District for at least twelve (12) months and for 1250 hours of service during the twelve (12) month period immediately preceding the commencement of the leave.

FMLA: is the Family and Medical Leave Act

Health Care Provider: is a doctor of medicine or osteopathy who is authorized to practice medicine or surgery (as appropriate) by the state in which the doctor practices. It also includes any other person determined by the U.S. Secretary of Labor to be capable of providing health care services.

Instructional Employee: is an employee whose principal function is to teach and instruct students in a class, a small group, or an individual setting and includes athletic coaches, driving instructors, preschool teachers, and special education assistants such as signers for the hearing impaired. The term does not include, and the special rules related to the taking of leave near the end of a semester do not apply to, teacher assistants or aides who do not have as their principal job actual teaching or instructing, nor does it include administrators, counselors, librarians, psychologists, or curriculum specialists.

Intermittent leave: is FMLA leave taken in separate blocks of time due to a single qualifying reason. A reduced leave schedule is a leave schedule that reduces an employee's usual number of working hours per workweek, or hours per workday. A reduced leave schedule is a change in the employee's schedule for a period of time, normally from full-time to part-time.

Next of Kin: used in respect to an individual, means the nearest blood relative of that individual.

Parent: is the biological parent of an employee or an individual who stood in loco parentis to an employee when the employee was a son or a daughter. This term does not include parents "in-law."

Serious Health Condition: is an injury, illness, impairment, or physical or mental condition that involves inpatient care in a hospital, hospice, or residential medical facility or continuing treatment by a health care provider.

Son or daughter, for numbers 1, 2, or 3 below: is a biological, adopted, or foster child, a stepchild, a legal ward, or a child of a person standing in loco parentis, who is either under age 18, or age 18 or older and "incapable of self-care because of a mental or physical disability" at the time that FMLA leave is to commence.

Year: the twelve (12) month period of eligibility shall begin on July first of each school-year.

Policy

The provisions of this policy are intended to be in line with the provisions of the FMLA. If any conflict(s) exist, the Family and Medical Leave Act of 1993 as amended shall govern.

Leave Eligibility

The District will grant up to twelve (12) weeks of leave in a year in accordance with the FMLA as amended to its eligible employees for one or more of the following reasons:

1. The provisions of this policy are intended to be in line with the provisions of the FMLA. If any conflict(s) exist, Because of the birth of a son or daughter of the employee and in order to care for such son or daughter;
2. Because of the placement of a son or daughter with the employee for adoption or foster care;
3. To care for the spouse, son, daughter, or parent, of the employee, if such spouse, son, daughter, or parent has a serious health condition; and
4. Because of a serious health condition that makes the employee unable to perform the functions of the position of such employee.
5. Because of any qualifying exigency arising out of the fact that the spouse, son, daughter, or parent of the employee is on covered active duty (or has been notified of an impending call or order to covered active duty) in the Armed Forces. (See Section Two)
6. To care for a spouse, child, parent or next of kin who is a covered service member with a serious illness or injury. (See Section Two)

The entitlement to leave for reasons 1 and 2 listed above shall expire at the end of the twelve (12) month period beginning on the date of such birth or placement.

A husband and wife who are both eligible employees employed by the District may not take more than a combined total of 12 weeks of FMLA leave for reasons 1, 2, 3 and 5.

Provisions Applicable to both Sections One and Two

District Notice to Employees

The District shall post, in conspicuous places in each school within the District where notices to employees and applicants for employment are customarily posted, a notice explaining the FMLA's provisions and providing information about the procedure for filing complaints with the Department of Labor.

Designation Notice to Employee

When an employee requests FMLA leave or the District determines that an employee's absence may be covered under the FMLA, the District shall provide written notice within five (5) business days (absent extenuating circumstances) to the employee of the District's determination of his/her eligibility for FMLA leave. **5** If the employee is eligible, the District may request additional information from the employee and/or certification from a health care provider to help make the applicability⁶ determination. After receiving sufficient information as requested, the District shall provide a written notice within five (5) business days (absent extenuating circumstances) to the employee of whether the leave qualifies as FMLA leave and will be so designated.⁷

If the circumstances for the leave don't change, the District is only required to notify the employee

once of the determination regarding the designation of FMLA leave within any applicable twelve month period.

Concurrent Leave Under the FMLA

All FMLA leave is unpaid unless substituted by applicable accrued leave. The District requires employees to substitute any applicable accrued leave (in the order of sick , personal, or vacation leave as may be applicable) for any period of FMLA leave.

Health Insurance Coverage

The District shall maintain coverage under any group health plan for the duration of FMLA leave the

employee takes at the level and under the conditions coverage would have been provided if the employee had continued in active employment with the District. Additionally, if the District makes a change to its health insurance benefits or plans that apply to other employees, the employee on FMLA leave must be afforded the opportunity to access additional benefits and/or the same responsibility for changes to premiums. Any changes made to a group health plan which apply to other District employees, must also apply to the employee on FMLA leave. The District will notify the employee on FMLA leave of any opportunities to change plans or benefits. The employee remains responsible for any portion of premium payments customarily paid by the employee. When on unpaid FMLA leave, it is the employee's responsibility to submit his/her portion of the cost of the group health plan coverage to the district's business office on or before it would be made by payroll deduction.

The District has the right to pay an employee's unpaid insurance premiums during the employee's unpaid FMLA leave to maintain the employee's coverage during his/her leave. The District may recover the employee's share of any premium payments missed by the employee for any FMLA leave period during which the District maintains health coverage for the employee by paying the his/her share. Such recovery shall be made by offsetting the employee's debt through payroll deductions or by other means against any monies owed the employee by the District.

An employee who chooses to not continue group health plan coverage while on FMLA leave, is entitled to be reinstated on the same terms as prior to taking the leave, including family or dependent coverage, without any qualifying period, physical examination, exclusion of pre-existing conditions, etc.

If an employee gives unequivocal notice of intent not to return to work, or if the employment relationship would have terminated if the employee had not taken FMLA leave, the District's obligation to maintain health benefits ceases.

If the employee fails to return from leave after the period of leave to which the employee was entitled has expired, the District may recover the premiums it paid to maintain health care coverage unless:

- a. The employee fails to return to work due to the continuation, reoccurrence, or onset of a serious health condition that entitles the employee to leave under reasons 3 or 4 listed above; and/or
- b. Other circumstances exist beyond the employee's control.

Circumstances under "a" listed above shall be licensed by a licensed, practicing health care provider verifying the employee's inability to return to work.

Reporting Requirements During Leave

Unless circumstances exist beyond the employee's control, the employee shall inform the district every two weeks during FMLA leave of their current status and intent to return to work.

Return to Previous Position

An employee returning from FMLA leave is entitled to be returned to the same position the employee held when leave commenced, or to an equivalent position with equivalent benefits, pay, and other terms and conditions of employment. An equivalent position must involve the same or substantially similar duties and responsibilities, which must entail substantially equivalent skill, effort, and authority. Specifically, upon returning from FMLA leave, a teacher may be assigned to another position that is not necessarily the same as the teacher's former job assignment. The employee may not be restored to a position requiring additional licensure or certification.

The employee's right to return to work and/or to the same or an equivalent position does not

supersede any actions taken by the District, such as conducting a RIF, which the employee would have been subject to had the employee not been on FMLA leave at the time of the District's actions.

Provisions Applicable to Section One

Employee Notice to District

Foreseeable Leave:

When the need for leave is foreseeable for reasons 1 through 4 listed above, the employee shall provide the District with not less than 30 days' notice, before the date the leave is to begin, of the employee's intention to take leave for the specified reason. An eligible employee who has no reasonable excuse for his/her failure to provide the District with timely advance notice of the need for FMLA leave may delay the FMLA coverage of such leave until 30 days after the date the employee provides notice.

If there is a lack of knowledge of approximately when the leave will be required to begin, a change in circumstances, or an emergency, notice must be given as soon as practicable. As soon as practicable means as soon as both possible and practical, taking into account all of the facts and circumstances in the individual case.

When the need for leave is for reasons 3 or 4 listed above, the eligible employee shall make a reasonable effort to schedule the treatment so as not to disrupt unduly the operations of the District subject to the approval of the health care provider of the spouse, son, daughter, or parent of the employee.

If the need for FMLA leave is foreseeable less than 30 days in advance, the employee shall notify the District as soon as practicable. If the employee fails to notify as soon as practicable, the District may delay granting FMLA leave for the number of days in advance that the employee should have provided notice and when the employee actually gave notice.

Unforeseeable Leave:

When the approximate timing of the need for leave is not foreseeable, an employee shall provide the District notice of the need for leave as soon as practicable given the facts and circumstances of the particular case. Ordinarily, the employee shall notify the District within two (2) working days of learning of the need for leave, except in extraordinary circumstances where such notice is not feasible.

Notice may be provided in person, by telephone, telegraph, fax, or other electronic means. If the eligible employee fails to notify the District as required unless the failure to comply is justified by unusual circumstances, the FMLA leave may be delayed or denied.

Medical Certification

Second and Third Opinions: In any case where the District has reason to doubt the validity of the initial certification provided, the District may require, at its expense, the employee to obtain the opinion of a second health care provider designated or approved by the employer. If the second opinion differs from the first, the District may require, at its expense, the employee to obtain a third opinion from a health care provider agreed upon by both the District and the employee. The opinion of the third health care provider shall be considered final and be binding upon both the District and the employee.

Recertification: The District may request, either orally or in writing, the employee obtain a recertification in connection with the employee's absence, at the employee's expense, no more often than every thirty (30) days unless one or more of the following circumstances apply;

- a. The original certification is for a period greater than 30 days. In this situation, the District may require a recertification after the time of the original certification expires, but in any case, the District may require a recertification every six (6) months.
- b. The employee requests an extension of leave;
- c. Circumstances described by the previous certification have changed significantly; and/or
- d. The district receives information that casts doubt upon the continuing validity of the certification.

The employee must provide the recertification in fifteen (15) calendar days after the District's request.

No second or third opinion on recertification may be required.

The District may deny FMLA leave if an eligible employee fails to provide requested certification.

Substitution of Paid Leave

When an employee's leave has been designated as FMLA leave for reasons 1 (as applicable), 2, 3, or 4 above, the District requires employees to substitute accrued sick, vacation, or personal leave for the period of FMLA leave.

To the extent the employee has accrued paid vacation or personal leave, any leave taken that qualifies for FMLA leave for reasons 1 or 2 above shall be paid leave and charged against the employee's accrued leave.

Workers Compensation: FMLA leave may run concurrently with a workers' compensation absence when the injury is one that meets the criteria for a serious health condition. To the extent that workers compensation benefits and FMLA leave run concurrently, the employee will be charged for any paid leave accrued by the employee at the rate necessary to bring the total amount of combined income up to 100% of usual contracted daily rate of pay. . If the health care provider treating the employee for the workers compensation injury certifies the employee is able to return to a "light duty job," but is unable to return to the employee's same or equivalent job, the employee may decline the District's offer of a "light duty job." As a result, the employee may lose his/her workers' compensation payments, but for the duration of the employee's FMLA leave, the employee will be paid for the leave to the extent that the employee has accrued applicable leave.

Return to Work

If the District's written designation determination that the eligible employee's leave qualified as FMLA leave under reason 4 above stated that the employee would have to provide a "fitness-for duty" certification from a health care provider for the employee to resume work, the employee must provide such certification prior to returning to work. The employee's failure to do so voids the District's obligation to reinstate the employee under the FMLA and the employee shall be terminated.

If the District's written designation determination that the eligible employee's leave qualified as FMLA leave under reason 4 above stated that the employee would have to provide a "fitness-for duty" certification from a health care provider for the employee to resume work **and** the designation determination listed the employee's essential job functions, the employee must provide certification that the employee is able to perform those functions prior to returning to work. The employee's failure to do so or his/her inability to perform his/her job's essential functions voids the District's obligation to reinstate the employee under the FMLA and the employee shall be terminated.

Failure to Return to Work:

In the event that an employee is unable or fails to return to work within the FMLA's leave timelines, the superintendent will make a determination at that time regarding the documented need for a

severance of the employee's contract due to the inability of the employee to fulfill the responsibilities and requirements of their contract.

Intermittent or Reduced Schedule Leave

To the extent practicable, employees requesting intermittent or reduced schedule leave shall provide the District with not less than 30 days' notice, before the date the leave is to begin, of the employee's intention to take leave.

Eligible employees may only take intermittent or reduced schedule leave for reasons 1 and 2 listed above if the District agrees to permit such leave upon request of the employee. If the District agrees to permit an employee to take intermittent or reduced schedule leave for such reasons, the agreement shall be consistent with this policy's requirements governing intermittent or reduced schedule leave. The employee may be transferred temporarily during the period of scheduled intermittent or reduced leave to an alternative position for which the employee is qualified and which better accommodates recurring periods of leave than does the employee's regular position. The alternative position shall have equivalent pay and benefits but does not have to have equivalent duties.

Eligible employees may take intermittent or reduced schedule FMLA leave due to reasons 3 or 4 listed above when the medical need is best accommodated by such a schedule. The eligible employee shall make a reasonable effort to schedule the treatment so as not to disrupt unduly the operations of the employer, subject to the approval of the health care provider.

When granting leave on an intermittent or reduced schedule for reasons 3 or 4 above that is foreseeable based on planned medical treatment, the District may temporarily transfer noninstructional, eligible employees for the period of scheduled intermittent or reduced leave to an alternative position for which the employee is qualified and which better accommodates recurring periods of leave than does the employee's regular position. The alternative position shall have equivalent pay and benefits but does not have to have equivalent duties. When the employee is able to return to full-time work, the employee shall be placed in the same or equivalent job as he/she had when the leave began. The employee will not be required to take more FMLA leave than necessary to address the circumstances requiring the need for the leave.

If an eligible employee who meets the definition of an instructional employee requests intermittent or reduced schedule leave for reasons 3 or 4 above that is foreseeable based on planned medical treatment and the employee would be on leave for greater than 20 percent of the total number of working days in the period during which the leave would extend, the district may require the employee to elect either

- a. to take medical leave for periods of a particular duration, not to exceed the duration of the planned medical treatment; or
- b. to transfer temporarily to an available alternative position offered by the employer for which the employee is qualified and that has equivalent pay and benefits and better accommodates recurring periods of leave than the regular employment position of the employee.

If the employee chooses to transfer to an alternative position it shall have equivalent pay and benefits but does not have to have equivalent duties. When the employee is able to return to full-time work, the employee shall be placed in the same or equivalent job as he/she had when the leave began. The employee will not be required to take more FMLA leave than necessary to address the circumstances requiring the need for the leave.

An eligible instructional employee who needs intermittent leave or leave on a reduced leave schedule for reasons 3 or 4 above may not be transferred to an alternative position during the period of the employee's intermittent or reduced leave schedule if, based on the foreseeable planned medical treatment, the employee would be on leave for 20 percent or less of the total number of working days over the period the leave would extend.

Leave taken by eligible instructional employees near the end of the semester

In any of the following scenarios, if the District chooses to require the eligible, instructional employee to stay on leave until the end of the semester, only the portion of the leave until the employee is ready and able to return to work shall be charged against the employee's FMLA leave entitlement. The required non-FMLA leave will not be considered excessive absenteeism.

Leave more than 5 weeks prior to end of the semester

If the eligible, instructional employee begins leave, due to reasons 1 through 4 listed above, more than 5 weeks prior to the end of the academic term, the District may require the employee to continue taking leave until the end of the semester, if

- (A) the leave is of at least 3 weeks duration; and
- (B) the return to employment would occur during the 3-week period before the end of the semester.

Leave less than 5 weeks prior to end of the semester

If the eligible, instructional employee begins leave, due to reasons 1, 2, or 3 listed above, during the period that commences 5 weeks prior to the end of the academic term, the District may require the employee to continue taking leave until the end of the semester, if

- (A) the leave is of greater than 2 weeks duration; and
- (B) the return to employment would occur during the 2-week period before the end of the semester.

Leave less than 3 weeks prior to end of the semester

If the eligible, instructional employee begins leave, due to 1, 2, or 3 listed above, during the period that commences 3 weeks prior to the end of the semester and the duration of the leave is greater than 5 working days, the District may require the employee to continue to take leave until the end of the semester.

SECTION TWO

FMLA LEAVE CONNECTED TO MILITARY SERVICE

Leave Eligibility

The FMLA provision of military associated leave is in two categories. Each one has some of its own definitions and stipulations. Therefore, they are dealt with separately in this Section of the policy. Definitions different than those in Section One are included under the respective reason for leave. Definitions that are the same as in Section One are NOT repeated in this Section.

QUALIFYING EXIGENCY

An eligible employee may take FMLA leave for any qualifying exigency arising out of the fact that the spouse, son, daughter, or parent of the employee is on covered active duty (or has been notified of an impending call or order to covered active duty) in the Armed Forces. Examples include issues involved with short-notice deployment, military events and related activities, childcare and school

activities, the need for financial and legal arrangements, counseling, rest and recuperation, post deployment activities, and other activities as defined by federal regulations.

Definitions:

Covered active duty means

- ☐ in the case of a member of a **regular** component of the Armed Forces, duty during deployment of the member with the armed forces to a foreign country; and
- ☐ in the case of a member of a **reserve** component of the Armed Forces, duty during deployment of the member with the armed forces to a foreign country under a call to order to active duty under a provision of law referred to in section 101(a)(13)(B) of title 10, United States Code.

Son or daughter on active duty or call to active duty status means the employee's biological, adopted, or foster child, stepchild, legal ward, or a child for whom the employee stood in loco parentis, who is on active duty or call to active duty status, and who is of any age.

Certification

The District may require the eligible employee to obtain certification to help the district determine if the requested leave qualifies for FMLA leave for the purposes of a qualifying exigency. The District may deny FMLA leave if an eligible employee fails to provide requested certification.

Employee Notice to District

Foreseeable Leave:

When the necessity for leave for any qualifying exigency is foreseeable, whether because the spouse, son, daughter, or parent of the employee is on covered active duty, or because of notification of an impending call or order to covered active duty, the employee shall provide such notice to the District as is reasonable and practicable regardless of how far in advance the leave is foreseeable. As soon as practicable means as soon as both possible and practical, taking into account all of the facts and circumstances in the individual case.

Unforeseeable Leave:

When the approximate timing of the need for leave is not foreseeable, an employee shall provide the District notice of the need for leave as soon as practicable given the facts and circumstances of the particular case. Ordinarily, the employee shall notify the District within two (2) working days of learning of the need for leave, except in extraordinary circumstances where such notice is not feasible.

Notice may be provided in person, by telephone, telegraph, fax, or other electronic means. If the eligible employee fails to notify the District as required unless the failure to comply is justified by unusual circumstances, the FMLA leave may be delayed or denied.

Substitution of Paid Leave

When an employee's leave has been designated as FMLA leave any qualifying exigency, the District requires employees to substitute accrued vacation, or personal leave for the period of FMLA leave.

Intermittent or Reduced Schedule Leave

Eligible employees may take intermittent or reduced schedule leave for any qualifying exigency. The employee shall provide the district with as much notice as is practicable.

Leave taken by an eligible instructional employees more than 5 weeks prior to end of the semester

If an eligible, instructional employee begins leave due to any qualifying exigency more than 5 weeks

prior to the end of the semester, the District may require the employee to continue taking leave until the end of the semester, if

- (A) the leave is of at least 3 weeks duration; and
- (B) the return to employment would occur during the 3-week period before the end of the semester.

If the District chooses to require the eligible, instructional employee to stay on leave until the end of the semester, only the portion of the leave until the employee is ready and able to return to work shall be charged against the employee's FMLA leave entitlement.

SERIOUS ILLNESS

An eligible employee is eligible for leave to care for a spouse, child, parent or next of kin who is a covered service member with a serious illness or injury under the following conditions and definitions.

Definitions:

Covered Service Member is

1. a member of the Armed Forces, including a member of the National Guard or Reserves, who is a undergoing medical treatment, recuperation, or therapy, is otherwise in outpatient status, or is otherwise on the temporary disability retired list, for a serious injury or illness; or
2. a veteran who is undergoing medical treatment, recuperation, or therapy, for a serious injury or illness and who was a member of the Armed Forces (including a member of the National Guard or Reserves) at any time during the period of five (5) years preceding the date on which the veteran undergoes that medical treatment, recuperation, or therapy.

Outpatient Status: used in respect to a covered service member, means the status of a member of the Armed Forces assigned to

- A) a military medical treatment facility as an outpatient; or
- B) a unit established for the purpose of providing command and control of members of the Armed Forces receiving medical care as outpatients.

Parent of a covered service member: is a covered service member's biological adoptive, step or foster father or mother, or any other individual who stood in loco parentis to the covered service member.

This term does not include parents "in law."

Serious Injury or Illness:

- (A) in the case of a member of the Armed Forces, including the National Guard or Reserves, it means an injury or illness incurred by the member in the line of duty on active duty in the Armed Forces (or existed before the beginning of the member's active duty and was aggravated by service in line of duty on active duty in the Armed Forces) and that may render the member medically unfit to perform the duties of the member's office, grade, rank, or rating and
- (B) in the case of a veteran who was a member of the Armed Forces, including a member of the National Guard or Reserves, at any time during a period as a covered service member defined in this policy, it means a qualifying (as defined by the U.S. Secretary of Labor) injury or illness that was incurred by the member in the line of duty on active duty in the Armed Forces (or existed before the beginning of the member's active duty and was aggravated by service in the line of duty on active duty in the Armed Forces) and that manifested itself before or after the member became a veteran.

Son or daughter of a covered service member means a covered service member's biological, adopted, or foster child, stepchild, legal ward, or a child for whom the covered service member stood in loco parentis, and who is of any age.

Year: for leave to care for the serious injury or illness of a covered service member, the twelve (12) month period begins on the first day the eligible employee takes FMLA leave to care for a covered service member and ends 12 months after that date.

An eligible employee who is the spouse, son, daughter, parent, or next of kin of a **covered service member** shall be entitled to a total of 26 weeks of leave during one 12-month period to care for the service member who has a serious injury or illness as defined in this policy. An eligible employee who cares for such a covered service member continues to be limited for reasons 1 through 4 in Section One and for any qualifying exigency to a total of 12 weeks of leave during a year as defined in this policy. For example, an eligible employee who cares for such a covered service member for weeks during a 12 month period could only take a total of 10 weeks for reasons 1 through 4 in Section One and for any qualifying exigency. An eligible employee may not take more than 12 weeks of FMLA leave for reasons 1 through 4 in Section One and for any qualifying exigency regardless of how little leave the eligible employee may take to care for a spouse, child, parent or next of kin who is a covered service member with a serious illness or injury.

If husband and wife are both eligible employees employed by the District, the husband and wife are entitled to a combined total of 26 weeks of leave during one 12-month period to care for their spouse, son, daughter, parent, or next of kin who is a **covered service member** with a serious injury or illness as defined in this policy. A husband and wife who care for such a covered service member continues to be limited to a combined total of 12 weeks FMLA leave for reasons 1 through 3 in Section One and for any qualifying exigency during a year as defined in this policy. For example, a husband and wife who are both eligible employees and who care for such a covered service member for 16 weeks during a 12 month period could only take a combined total of 10 weeks for reasons 1 through 3 in Section One and for any qualifying exigency.

Medical Certification

The District may require the eligible employee to obtain certification of the covered service member's serious health condition to help the District determine if the requested leave qualifies for FMLA leave. The District may deny FMLA leave if an eligible employee fails to provide requested certification.

Employee Notice to District

Foreseeable Leave:

When the need for leave to care for a spouse, child, parent or next of kin who is a covered service member with a serious illness or injury is clearly foreseeable at least 30 days in advance, the employee shall provide the District with not less than 30 days' notice before the date the leave is to begin of the employee's intention to take leave for the specified reason. An eligible employee who has no reasonable excuse for his/her failure to provide the District with timely advance notice of the need for FMLA leave may delay the FMLA coverage of such leave until 30 days after the date the employee provides notice.

If the need for FMLA leave is foreseeable less than 30 days in advance, the employee shall notify the District as soon as practicable. If the employee fails to notify as soon as practicable, the District may delay granting

FMLA leave for the length of time that the employee should have provided notice and when the employee actually gave notice.

When the need for leave is to care for a spouse, child, parent or next of kin who is a covered service member with a serious illness or injury, the employee shall make a reasonable effort to schedule the treatment so as not to disrupt unduly the operations of the district subject to the approval of the health care provider of the spouse, son, daughter, or parent of the employee.

Unforeseeable Leave:

When the approximate timing of the need for leave is not foreseeable, an employee shall provide the District notice of the need for leave as soon as practicable given the facts and circumstances of the particular case. Ordinarily, the employee shall notify the District within two (2) working days of learning of the need for leave, except in extraordinary circumstances where such notice is not feasible.

Notice may be provided in person, by telephone, telegraph, fax, or other electronic means. If the eligible employee fails to notify the District as required unless the failure to comply is justified by unusual circumstances, the FMLA leave may be delayed or denied.

Substitution of Paid Leave

When an employee's leave has been designated as FMLA leave to care for a spouse, child, parent or next of kin who is a covered service member with a serious illness or injury, the District requires employees to substitute accrued sick, vacation, or personal leave for the period of FMLA leave.

Intermittent or Reduced Schedule Leave

To the extent practicable, employees requesting intermittent or reduced schedule leave to care for a spouse, child, parent or next of kin who is a covered service member with a serious illness or injury shall provide the District with not less than 30 days' notice, before the date the leave is to begin, of the employee's intention to take leave.

Eligible employees may take intermittent or reduced schedule FMLA leave to care for a spouse, child, parent or next of kin who is a covered service member with a serious illness or injury when the medical need is best accommodated by such a schedule. The eligible employee shall make a reasonable effort to schedule the treatment so as not to disrupt unduly the operations of the employer, subject to the approval of the health care provider.

When granting leave on an intermittent or reduced schedule to care for a spouse, child, parent or next of kin who is a covered service member with a serious illness or injury that is foreseeable based on planned medical treatment, the District may temporarily transfer non-instructional eligible employees for the period of scheduled intermittent or reduced leave to an alternative position for which the employee is qualified and which better accommodates recurring periods of leave than does the employee's regular position. The alternative position shall have equivalent pay and benefits but does not have to have equivalent duties. When the employee is able to return to full-time work, the employee shall be placed in the same or equivalent job as he/she had when the leave began.

Specifically, upon returning from FMLA leave, an employee may be assigned to another position that is not necessarily the same as the employee's former job assignment. The employee will not be required to take more FMLA leave than necessary to address the circumstances requiring the need for the leave.

If an eligible employee who meets the definition of an instructional employee requests intermittent or reduced schedule leave to care for a spouse, child, parent or next of kin who is a covered service member with a serious illness or injury that is foreseeable based on planned medical treatment and the employee would be on leave for greater than 20 percent of the total number of working days in the period during which the leave would extend, the District may require the employee to choose either

- a. to take medical leave for periods of a particular duration, not to exceed the duration of the planned medical treatment; or
- b. to transfer temporarily to an available alternative position offered by the employer for which the employee is qualified and that has equivalent pay and benefits and better accommodates recurring periods of leave than the regular employment position of the employee.

If the employee chooses to transfer to an alternative position it shall have equivalent pay and benefits but does not have to have equivalent duties. When the employee is able to return to full-time work, the employee shall be placed in the same or equivalent job as he/she had when the leave began. Specifically, upon returning from FMLA leave, a teacher may be assigned to another position that is not necessarily the same as the teacher's former job assignment. The employee will not be required to take more FMLA leave than necessary to address the circumstances that required the need for the leave.

An eligible instructional employee, who needs intermittent leave or leave on a reduced leave schedule to care for a spouse, child, parent or next of kin who is a covered service member with a serious illness or injury, may not be transferred to an alternative position during the period of the employee's intermittent or reduced leave schedule if, based on the foreseeable planned medical treatment, the employee would be on leave for 20 percent or less of the total number of working days over the period the leave would extend.

Leave taken by eligible instructional employees near the end of the academic the semester

In any of the following scenarios, if the district chooses to require the eligible, instructional employee to stay on leave until the end of the semester, only the portion of the leave until the employee is ready and able to return to work shall be charged against the employee's FMLA leave entitlement. The excess non-FMLA leave will not be considered excessive absenteeism.

Leave more than 5 weeks prior to end of the semester

If the eligible, instructional employee begins leave, for any qualifying exigency or to care for a spouse, child, parent or next of kin who is a covered service member with a serious illness or injury more than 5 weeks prior to the end of the semester, the District may require the employee to continue taking leave until the end of the semester, if

- (A) the leave is of at least 3 weeks duration; and
- (B) the return to employment would occur during the 3-week period before the end of the semester.

Leave less than 5 weeks prior to end of the semester

If the eligible, instructional employee begins leave to care for a spouse, child, parent or next of kin who is a covered service member with a serious illness or injury during the period that commences 5 weeks prior to the end of the semester, the District may require the employee to continue taking leave until the end of the semester, if

- (A) the leave is of greater than 2 weeks duration; and
- (B) the return to employment would occur during the 2-week period before the end of the semester.

Leave less than 3 weeks prior to end of the semester

If the eligible, instructional employee begins leave to care for a spouse, child, parent or next of kin who is a covered service member with a serious illness or injury during the period that commences 3 weeks prior to the end of the semester and the duration of the leave is greater than 5 working days, the District may require the employee to continue to take leave until the end of the semester.

ASSIGNMENT OF EXTRA DUTIES FOR PERSONNEL

From time to time extra duties may be assigned to personnel by the school principal or the Superintendent as circumstances dictate.

PERSONNEL CELL PHONE USE

Use of cell phones or other electronic communication devices by employees during instructional time for other than instructional purposes is strictly forbidden unless specifically approved in advance by the superintendent, building principal, or their designees.

District staff shall not be given cell phones or computers for any purpose other than their specific use associated with school business. School employees who use a school issued cell phones and/or computers for non-school purposes, except as permitted by District policy, shall be subject to discipline, up to and including termination. School employees who are issued District cell phones due to the requirements of their position may use the phone for personal use on an “as needed” basis provided it is not during instructional time.

All employees are forbidden from using school issued cell phones while driving any vehicle at any time. Violation may result in disciplinary action up to and including termination.

PERSONNEL BENEFITS

The Parkers Chapel School District provides its licensed personnel benefits consisting of the following.

1. The priceless reward of helping shape the life and future of our children;
2. Health insurance assistance;
3. Contribution to the teacher retirement system;
4. One sick leave day per contract calendar month, or greater portion thereof ; and
5. 2 Personal days.
6. Dental insurance assistance

LICENSED PERSONNEL DISMISSAL AND NON-RENEWAL

For procedures relating to the termination and non-renewal of teachers, please refer to the Arkansas Teacher Fair Dismissal Act (A.C.A. §§ 6-17-1501 et seq.) and the Teacher Evaluation Support System (A.C.A. §§ 6-17-2801 et seq.). The Acts specifically are not made a part of this policy by this reference.

A copy of the statutes is available for review in the office of the principal of each school building.

ASSIGNMENT OF TEACHER AIDES

The assignment of teacher aides shall be made by the principal or his/her designee. Changes in the assignments may be made as necessary due to changes in the student population, teacher changes, and to best meet the educational needs of the students.

PERSONNEL RESPONSIBILITIES GOVERNING BULLYING

Teachers and other school employees who have witnessed, or are reliably informed that, a student has been a victim of bullying as defined in this policy, including a single action which if allowed to continue would constitute bullying, shall report the incident(s) to the principal. The principal or his/her designee shall be responsible for investigating the incident(s) to determine if disciplinary action is warranted.

The person or persons reporting behavior they consider to be bullying shall not be subject to retaliation or reprisal in any form.

District staff are required to help enforce implementation of the district's anti-bullying policy. The district's definition of bullying is included below. Students who bully another person are to be held accountable for their actions whether they occur on school equipment or property; off school property at a school-sponsored or school-approved function, activity, or event; or going to or from school or a school activity. Students are encouraged to report behavior they consider to be bullying, including a single action which if allowed to continue would constitute bullying, to their teacher or the building principal. The report may be made anonymously.

A school principal or his or her designee who receives a credible report or complaint of bullying shall promptly investigate the complaint or report and make a record of the investigation and any action taken as a result of the investigation.

Definitions:

Attribute means an actual or perceived personal characteristic including without limitation race, color, religion, ancestry, national origin, socioeconomic status, academic status, disability, gender, gender identity, physical appearance, health condition, or sexual orientation;

Bullying means the intentional harassment, intimidation, humiliation, ridicule, defamation, or threat or incitement of violence by a student against another student or public school employee by a written, verbal, electronic, or physical act that may address an attribute of the other student, public school employee, or person with whom the other student or public school employee is associated and that causes or creates actual or reasonably foreseeable:

- ☐ Physical harm to a public school employee or student or damage to the public school employee's or student's property;
- ☐ Substantial interference with a student's education or with a public school employee's role in education;
- ☐ A hostile educational environment for one (1) or more students or public school employees due to the severity, persistence, or pervasiveness of the act; or
- ☐ Substantial disruption of the orderly operation of the school or educational environment;

Electronic act means without limitation a communication or image transmitted by means of an

electronic device, including without limitation a telephone, wireless phone or other wireless communications device, computer, or pager that results in the substantial disruption of the orderly operation of the school or educational environment.

Electronic acts of bullying are prohibited whether or not the electronic act originated on school property or with school equipment, if the electronic act is directed specifically at students or school personnel and maliciously intended for the purpose of disrupting school, and has a high likelihood of succeeding in that purpose;

Harassment means a pattern of unwelcome verbal or physical conduct relating to another person's constitutionally or statutorily protected status that causes, or reasonably should be expected to cause, substantial interference with the other's performance in the school environment; and

Substantial disruption means without limitation that any one or more of the following occur as a result of the bullying:

- ☐ Necessary cessation of instruction or educational activities;
- ☐ Inability of students or educational staff to focus on learning or function as an educational unit because of a hostile environment;
- ☐ Severe or repetitive disciplinary measures are needed in the classroom or during educational activities; or
- ☐ Exhibition of other behaviors by students or educational staff that substantially interfere with the learning environment.

Examples of "Bullying" may include but are not limited to a pattern of behavior involving one or more of the following:

1. Sarcastic comments "compliments" about another student's personal appearance or actual or perceived attributes,
2. Pointed questions intended to embarrass or humiliate,
3. Mocking, taunting or belittling,
4. Non-verbal threats and/or intimidation such as "fronting" or "chesting" a person,
5. Demeaning humor relating to a student's race, gender, ethnicity or actual or perceived attributes,
6. Blackmail, extortion, demands for protection money or other involuntary donations or loans,
7. Blocking access to school property or facilities,
8. Deliberate physical contact or injury to person or property,
9. Stealing or hiding books or belongings, and/or
10. Threats of harm to student(s), possessions, or others.

LICENSED PERSONNEL RECORDS AND REPORTS

The superintendent or his/her designee shall determine, by individual or by position, those records a teacher is responsible to keep and those reports he/she is required to maintain. It is a requirement of employment that all required records and reports be completed, submitted, or otherwise tendered, and be accepted by the principal or superintendent as complete and satisfactory, before the last month's pay will be released to the licensed employee.

PERSONNEL DUTY TO REPORT CHILD ABUSE, MALTREATMENT OR NEGLECT

It is the statutory duty of licensed school district employees who have reasonable cause to suspect

child abuse or maltreatment to directly and personally report these suspicions to the Arkansas Child Abuse Hotline, by calling 1-800-482-5964. Failure to report suspected child abuse, maltreatment or neglect by calling the Hotline can lead to criminal prosecution and individual civil liability of the person who has this duty. Notification of local or state law enforcement does not satisfy the duty to report; only notification by means of the Child Abuse Hotline discharges this duty.

The duty to report suspected child abuse or maltreatment is a direct and personal duty, and cannot be assigned or delegated to another person. There is no duty to investigate, confirm or substantiate statements a student may have made which form the basis of the reasonable cause to believe that the student may have been abused or subjected to maltreatment by another person; however, a person with a duty to report may find it helpful to make a limited inquiry to assist in the formation of a belief that child abuse, maltreatment or neglect has occurred, or to rule out such a belief¹. Employees and volunteers who call the Child Abuse Hotline in good faith are immune from civil liability and criminal prosecution.

By law, no school district or school district employee may prohibit or restrict an employee or volunteer from directly reporting suspected child abuse or maltreatment, or require that any person notify or seek permission from any person before making a report to the Child Abuse Hotline.

PERSONNEL VIDEO SURVEILLANCE AND OTHER MONITORING

The Board of Directors has a responsibility to maintain discipline, protect the safety, security, and welfare of its students, staff, and visitors while at the same time safeguarding district facilities, vehicles, and equipment. As part of fulfilling this responsibility, the board authorizes the use of video/audio surveillance cameras, automatic identification, data compilation devices, and technology capable of tracking the physical location of district equipment, students, and/or personnel.

The placement of video/audio surveillance cameras shall be based on the presumption and belief that students, staff and visitors have no reasonable expectation of privacy anywhere on or near school property, facilities, vehicles, or equipment, with the exception of places such as rest rooms or dressing areas where an expectation of bodily privacy is reasonable and customary.

Signs shall be posted on district property and in or on district vehicles to notify students, staff, and visitors that video cameras may be in use. Violations of school personnel policies or laws caught by the cameras and other technologies authorized in this policy may result in disciplinary action. The district shall retain copies of video recordings until they are erased which may be accomplished by either deletion or copying over with a new recording.

Videos, automatic identification, or data compilations containing evidence of a violation of district personnel policies and/or state or federal law shall be retained until the issue of the misconduct is no longer subject to review or appeal as determined by board policy or staff handbook; any release or viewing of such records shall be in accordance with current law.

Staff who vandalize, damage, defeat, disable, or render inoperable (temporarily or permanently) surveillance cameras and equipment, automatic identification, or data compilation devices shall be subject to appropriate disciplinary action and referral to appropriate law enforcement authorities. Video recordings and automatic identification or data compilation records may become a part of a staff member's personnel record.

OBTAINING and RELEASING STUDENT'S FREE AND REDUCED PRICE MEAL ELIGIBILITY INFORMATION

Obtaining Eligibility Information

A fundamental underpinning of the National School Lunch and School Breakfast Programs (Programs) is that in their implementation, there will be no physical segregation of, discrimination against, or overt identification of children who are eligible for the Program's benefits. While the requirements of the Programs are defined in much greater detail in federal statutes and pertinent Code of Federal Regulations, this policy is designed to help employees understand prohibitions on how the student information is obtained and/or released through the Programs. Employees with the greatest responsibility for implementing and monitoring the Programs should obtain the training necessary to become fully aware of the nuances of their responsibilities.

The District is required to inform households with children enrolled in District schools of the availability of the Programs and of how the household may apply for Program benefits. However, the District and anyone employed by the district is strictly forbidden from requiring any household or student within a household from submitting an application to participate in the program. There are NO exceptions to this prohibition and it would apply, for example, to the offer of incentives for completed forms, or disincentives or negative consequences for failing to submit or complete an application. Put simply, federal law requires that the names of the children shall not be published, posted or announced in any manner.

In addition to potential federal criminal penalties that may be filed against a staff member who violates this prohibition¹, the employee shall be subject to discipline up to and including termination.

Releasing Eligibility Information

As part of the district's participation in the National School Lunch Program and the School Breakfast Program, the district collects eligibility data from its students. The data's confidentiality is very important and is governed by federal law. The district has made the determination to release student eligibility status or information² as permitted by law. Federal law governs how eligibility data may be released and to whom. The district will take the following steps to ensure its confidentiality: Some data may be released to government agencies or programs authorized by law to receive such data without parental consent, while other data may only be released after obtaining parental consent.

In both instances, allowable information shall only be released on a need to know basis to individuals authorized to receive the data. The recipients shall sign an agreement with the district specifying the names or titles of the persons who may have access to the eligibility information. The agreement shall further specify the specific purpose(s) for which the data will be used and how the recipient(s) shall protect the data from further, unauthorized disclosures.

The superintendent shall designate the staff member(s) responsible for making eligibility determinations. Release of eligibility information to other district staff shall be limited to as few individuals as possible who shall have a specific need to know such information to perform their job responsibilities. Principals, counselors, teachers, and administrators shall not have routine access to eligibility information or status.

Each staff person with access to individual eligibility information shall be notified of their personal liability for its unauthorized disclosure and shall receive appropriate training on the laws governing the restrictions of such information.

DUTY OF LICENSED EMPLOYEES TO MAINTAIN LICENSE IN GOOD STANDING

It is the responsibility of each teacher, and not the district, to keep his/her teaching license continuously renewed with no lapses in licensure, and in good standing with the State Board of Education. Failure of a teacher to do so will be grounds for termination.

PERSONNEL WORKPLACE INJURIES AND WORKERS' COMPENSATION

The district provides Workers' Compensation Insurance, as required by law. Employees who sustain **any** injury at work must immediately notify their immediate supervisor, or in the absence of their immediate supervisor notify the business manager. An injured employee must fill out a Form N and the employee's supervisor will determine whether to report the claim or to file the paperwork if the injury requires neither medical treatment or lost work time. While many injuries will require no medical treatment or time lost at work, should the need for treatment arise later, it is important that there be a record that the injury occurred. All employees have a duty to provide information and make statements as requested for the purposes of the claim assessment and investigation. For injuries requiring medical attention, the district will exercise its right to designate the initial treating physician and an injured employee will be directed to seek medical attention, if necessary, from a specific physician or clinic.

A Workers' Compensation absence may run concurrently with FMLA leave (policy 3.32) when the injury is one that meets the criteria for a serious health condition. To the extent that workers compensation benefits and FMLA leave run concurrently, the employee will be charged for any paid leave accrued by the employee at the rate necessary to bring the total amount of combined income up to 100% of usual contracted daily rate of pay. If the health care provider treating the employee for the workers compensation injury certifies the employee is able to return to a "light duty job," but is unable to return to the employee's same or equivalent job, the employee may decline the District's offer of a "light duty job." As a result, the employee may lose his/her workers' compensation payments, but for the duration of the employee's FMLA leave, the employee will be paid for the leave to the extent that the employee has accrued applicable leave.

To the extent an employee has accrued sick leave and a WC claim has been filed:

- ☐ the employee will be charged for a day's sick leave for the all days missed until such time as the WC claim has been approved or denied;
- ☐ an employee whose WC claim is accepted by the WC insurance carrier as compensable and who is absent for eight or more days shall be charged sick leave at the rate necessary, when combined with WC benefits, to bring the total amount of combined income up to 100% of the employee's usual contracted daily rate of pay;
- ☐ an employee whose WC claim is accepted by the WC insurance carrier as compensable and is absent for 14 or more days will be credited back that portion of sick leave for the first seven (7) days of absence that is not necessary to have brought the total amount of combined income up to 100% of the employee's usual contracted gross pay.

PERSONNEL SOCIAL NETWORKING AND ETHICS

Definitions

Social Media Account: a personal, individual, and non-work related account with an electronic

medium or service where users may create, share, or view user-generated content, including videos, photographs, blogs, podcasts, messages, emails or website profiles or locations, such as FaceBook, Twitter, LinkedIn, MySpace, Instagram.

Professional/education Social Media Account: an account with an electronic medium or service where users may create, share, or view user-generated content, including videos, photographs, blogs, podcasts, messages, emails or website profiles or locations, such as FaceBook, Twitter, LinkedIn, MySpace, Instagram.

Blogs: are a type of networking and can be either social or professional in their orientation.

Professional blogs are encouraged and can provide a place for teachers to post homework, keep parents up-to-date, and interact with students concerning school related activities. Social blogs are discouraged to the extent they involve teachers and students in a non-education oriented format.

Policy

Technology used appropriately gives faculty new opportunities to engage students. District staff are encouraged to use educational technology, the Internet, and professional/education social networks to raise student achievement and to improve communication with parents and students. Technology and social media accounts also offer staff many ways they can present themselves unprofessionally and/or interact with students inappropriately.

It is the duty of each staff member to appropriately manage all interactions with students, regardless of whether contact or interaction with a student occurs face-to-face or by means of technology, to ensure that the appropriate staff/student relationship is maintained. This includes instances when students initiate contact or behave inappropriately themselves.

Public school employees are, and always have been, held to a high standard of behavior. Staff members are reminded that whether specific sorts of contacts are permitted or not specifically forbidden by policy, they will be held to a high standard of conduct in all their interactions with students. Failure to create, enforce and maintain appropriate professional and interpersonal boundaries with students could adversely affect the District's relationship with the community and jeopardize the employee's employment with the district.

The Arkansas Department of Education *Rules Governing the Code of Ethics for Arkansas Educators* requires District staff to maintain a professional relationship with each student, both in and outside the classroom. The School Board of Directors encourages all staff to read and become familiar with the Rules. Conduct in violation of the *Rules Governing the Code of Ethics for Arkansas Educators*, including, but not limited to conduct relating to the inappropriate use of technology or online resources, may be reported to the Professional License Standards Board (PLSB) and may form the basis for disciplinary action up to and including termination.

Staff members are discouraged from creating personal social media accounts to which they invite students to be friends or followers. Employees taking such action do so at their own risk and are advised to monitor the site's privacy settings regularly.

District employees may set up blogs and other professional/education social media accounts using District resources and following District guidelines to promote communications with students,

parents, and the community concerning school-related activities and for the purpose of supplementing classroom instruction. Accessing professional/education social media during school hours is permitted.

Staff are reminded that the same relationship, exchange, interaction, information, or behavior that would be unacceptable in a non-technological medium, is unacceptable when done through the use of technology. In fact, due to the vastly increased potential audience digital dissemination presents, extra caution must be exercised by staff to ensure they don't cross the line of acceptability. A good rule of thumb for staff to use is, "if you wouldn't say it in class, don't say it online."

Whether permitted or not specifically forbidden by policy, or when expressed in an adult-to-adult, face-to-face context, what in other mediums of expression could remain private opinions, including "likes" or comments that endorse or support the message or speech of another person, when expressed by staff on a social media website, have the potential to be disseminated far beyond the speaker's desire or intention. This could undermine the public's perception of the individual's fitness to educate students, thus undermining the teacher's effectiveness. In this way, the expression and publication of such opinions could potentially lead to disciplinary action being taken against the staff member, up to and including termination or nonrenewal of the contract of employment.

Accessing social media websites for personal use during school hours is prohibited, except during breaks or preparation periods. Staff are discouraged from accessing social media websites on personal equipment during their breaks and/or preparation periods because, while this is not prohibited, it may give the public the appearance that such access is occurring during instructional time. Staff shall not access social media websites using district equipment at any time, including during breaks or preparation periods, except in an emergency situation or with the express prior permission of school administration. All school district employees who participate in personal social media websites shall not post any school district data, documents, photographs taken at school or of students, logos, or other district owned or created information on any personal website. Further, the posting of any private or confidential school district material, on such websites is strictly prohibited.

Privacy of Employee's Social Media Accounts

In compliance with A.C.A. § 11-2-124, the District shall not require, request, suggest, or cause a current or prospective employee to:

1. Disclose the username and/or password to his/her personal social media account;
2. Add an employee, supervisor, or administrator to the list of contacts associated with his/her personal social media account;
3. Change the privacy settings associated with his/her personal social media account; or
4. Retaliate against the employee for refusing to disclose the username and/or password to his/her personal social media account.

The District may require an employee to disclose his or her username and/or password to a personal social media account if the employee's personal social media account activity is reasonably believed to be relevant to the investigation of an allegation of an employee violating district policy, or state, federal or local laws or regulations. If such an investigation occurs, and the employee refuses, upon request, to supply the username and/or password required to make an investigation, disciplinary action may be taken against the employee, which could include termination or nonrenewal of the employee's contract of employment with the District.

Notwithstanding any other provision in this policy, the District reserves the right to view any

information about a current or prospective employee that is publicly available on the Internet. In the event that the district inadvertently obtains access to information that would enable the district to have access to an employee's personal social media account, the district will not use this information to gain access to the employee's social media account. However, disciplinary action may be taken against an employee in accord with other District policy for using district equipment or network capability to access such an account. Employees have no expectation of privacy in their use of District issued computers, other electronic device, or use of the District's network. (See policy 3.28—LICENSED PERSONNEL COMPUTER USE POLICY)

PERSONNEL VACATIONS

240 day contracted employees are credited with 10 days of vacation at the beginning of each fiscal year. This is based on the assumption that a full contract year will be worked. If an employee fails to finish the contract year due to resignation or termination, the employee's final check will be reduced at the rate of .833 days per month, or major portion of a month, for any days used but not earned.

Instructional Employees may not generally take vacation during instructional time. All vacation time must be approved, in advance to the extent practicable, by the superintendent or designee. If vacation is requested, but not approved, and the employee is absent from work in spite of the vacation denial, disciplinary action will be taken against the employee, which may include termination or nonrenewal. No employee shall be entitled to more than 15 days of vacation as of the first day of each fiscal year. The permissible carry forward includes the 10 days credited upon the start of the fiscal year.

Employees having accrued vacation totaling more than 15 days as of the date this policy is implemented shall not be eligible to increase the number of days carried forward during their employment with the district. Earned but unused vacation will be paid upon retirement, termination, or nonrenewal at the employee's current daily rate of pay.

PERSONNEL WEAPONS ON CAMPUS

Firearms

Except as permitted by this policy, no employee of this school district, including those who may possess a "concealed carry permit," shall possess a firearm on any District school campus or in or upon any school bus or at a District designated bus stop.

Employees who meet one or more of the following conditions are permitted to bring a firearm onto school property.

- ☐ He/she is participating in a school-approved educational course or program involving the use of firearms such as ROTC programs, hunting safety or military education, or before or after-school hunting or rifle clubs;
- ☐ The firearms are securely stored and located in an employee's on-campus personal residence and/or immediately adjacent parking area;
- ☐ He/she is a registered, commissioned security guard acting in the course and scope of his/her duties.

Possession of a firearm by a school district employee anywhere on school property, including parking areas and in or upon a school bus, will result in disciplinary action being taken against the employee, which may include termination or nonrenewal of the employee.

Other Weapons

An employee may possess a pocket knife which for the purpose of this policy is defined as a knife that can be folded into a case and has a blade or blades of less than three (3) inches or less each. An employee may carry, for the purpose of self-defense, a small container of tear gas or mace which for the purpose of this policy is defined as having a capacity of 150cc or less. Employees are expected to safeguard such items in such a way as to ensure they are not possessed by students. Such items are not to be used against students, parents or other school district employees. Possession of weapons, knives or self-defense items that do not comply with the limits contained herein, the failure of an employee to safeguard such items, or the use of such items against students, parents or other school district employees may result in disciplinary action being taken against the employee, which may include termination or nonrenewal of the employee.

TEACHERS' REMOVAL OF STUDENT FROM CLASSROOM

A teacher may remove a student from class whose behavior the teacher has documented to be repeatedly interfering with the teacher's ability to teach the students in the class or whose behavior is so unruly, disruptive or abusive that it interferes with the ability of the student's other classmates to learn. Students who have been removed from their classroom by a teacher shall be sent to the principal's or principal's designee's office for appropriate discipline.

The teacher's principal or the principal's designee may:

1. Place the student into another appropriate classroom;
2. Place the student into in-school suspension;
3. Place the student into the District's alternative learning environment;
4. Return the student to the class; or
5. Take other appropriate action consistent with the District's student discipline policies and state and federal law.

If a teacher removes a student from class two (2) times during any nine-week grading period, the principal or the principal's designee may not return the student to the teacher's class unless a conference has been held for the purpose of determining the cause of the problem and possible solutions. The conference is to be held with the following individuals present:

1. The principal or the principal's designee;
2. The teacher;
3. The school counselor;
4. The parents, guardians, or persons in loco parentis; and
5. The student, if appropriate.

However, the failure of the parents, guardians, or persons in loco parentis to attend the conference does not prevent any action from being taken as a result of the conference.

STUDENT MAKE-UP WORK

Students who miss school due to an absence shall be allowed to make up the work they missed during their absence under the following rules.

1. Students are responsible for asking the teachers of the classes they missed what assignments they need to make up.
2. Teachers are responsible for providing the missed assignments when asked by a returning student.

3. Students are required to ask for their assignments on their first day back at school or their first class day after their return.
4. Make-up tests are to be rescheduled at the discretion of the teacher, but must be aligned with the schedule of the missed work to be made up.
5. Students shall have one class day to make up their work for each class day they are absent.
6. Make-up work which is not turned in within the make-up schedule for that assignment shall receive a zero.
7. Students are responsible for turning in their make-up work without the teacher having to ask for it.
8. Students who are absent on the day their make-up work is due must turn in their work the day they return to school whether or not the class for which the work is due meets the day of their return.
9. As required/permitted by the student's Individual Education Program or 504 Plan.

Work may not be made up for credit for unexcused absences. Out-of-school suspensions are unexcused absences. This regulation can be appealed to the School Board on a case by case basis.

TARDIES

Promptness is an important character trait that District staff is to encourage to model and help develop in our schools' students. At the same time, promptness is the responsibility of each student. Students who are late to class must follow the designated procedures. Teachers must ensure that students are following these procedures.

CLOSED CAMPUS

All schools in the District shall operate closed campuses. Students are required to stay on campus from their arrival until dismissal at the end of the regular school day unless given permission to leave the campus by a school official. Students must sign out in the office upon their departure. Report anyone leaving campus to the Principal

PRIVACY OF STUDENTS' RECORDS/ DIRECTORY INFORMATION

Except when a court order regarding a student has been presented to the district to the contrary, all students' education records are available for inspection and copying by the parent of his/her student who is under the age of eighteen (18). At the age of eighteen (18), the right to inspect and copy a student's records transfers to the student. A student's parent or the student, if over the age of 18, requesting to review the student's education records will be allowed to do so within no more than forty five (45) days of the request. The district forwards education records, including disciplinary records, to schools that have requested them and in which the student seeks or intends to enroll, or is already enrolled so long as the disclosure is for purposes related to the student's enrollment or transfer.

The district shall receive written permission before releasing education records to any agency or individual not authorized by law to receive and/or view the education records without prior parental permission. The District shall maintain a record of requests by such agencies or individuals for access to, and each disclosure of, personally identifiable information (hereinafter "PII") from the education records of each student. Disclosure of education records is authorized by law to school officials with legitimate educational interests. A personal record kept by a school staff member is not considered an education record if it meets the following tests.

- it is in the sole possession of the individual who made it;
- it is used only as a personal memory aid; and

- Information contained in it has never been revealed or made available to any other person, except the maker's temporary substitute.

For the purposes of this policy a school official is a person employed by the school as an administrator, supervisor, instructor, or support staff member (including health or medical staff and law enforcement unit personnel); a person serving on the school board; a person or company with whom the school has contracted to perform a special task (such as an attorney, auditor, medical consultant, or therapist); or a parent or student serving on an official committee, such as a disciplinary or grievance committee, or assisting another school official in performing his or her tasks.

For the purposes of this policy a school official has a legitimate educational interest if the official needs to review an education record in order to fulfill his or her professional responsibility, contracted duty, or duty of elected office.

The District discloses PII from an education record to appropriate parties, including parents, in connection with an emergency if knowledge of the information is necessary to protect the health or safety of the student or other individuals. The superintendent or designee shall determine who will have access to and the responsibility for disclosing information in emergency situations.

When deciding whether to release PII in a health or safety emergency, the District may take into account the totality of the circumstances pertaining to a threat to the health or safety of a student or other individuals. If the District determines that there is an articulable and significant threat to the health or safety of a student or other individuals, it may disclose information from education records to any person whose knowledge of the information is necessary to protect the health or safety of the student or other individuals.

For purposes of this policy, the Parkers Chapel School District does not distinguish between a custodial and noncustodial parent, or a non-parent such as a person acting in loco parentis or a foster parent with respect to gaining access to a student's records. Unless a court order restricting such access has been presented to the district to the contrary, the fact of a person's status as parent or guardian, alone, enables that parent or guardian to review and copy his child's records.

If there exists a court order which directs that a parent not have access to a student or his records, the parent, guardian, person acting in loco parentis, or an agent of the Department of Human Services must present a file-marked copy of such order to the building principal and the superintendent. The school will make good-faith efforts to act in accordance with such court order, but the failure to do so does not impose legal liability upon the school. The actual responsibility for enforcement of such court orders rests with the parents or guardians, their attorneys and the court which issued the order.

A parent or guardian does not have the right to remove any material from a student's records, but such parent or guardian may challenge the accuracy of a record. The right to challenge the accuracy of a record does not include the right to dispute a grade, which must be done only through the appropriate teacher and/or administrator, the decision of whom is final. A challenge to the accuracy of material contained in a student's file must be initiated with the building principal, with an appeal available to the Superintendent or his designee.

The challenge shall clearly identify the part of the student's record the parent wants changed and specify why he/she believes it is inaccurate or misleading. If the school determines not to amend the record as requested, the school will notify the requesting parent or student of the decision and inform them of their right to a hearing

regarding the request for amending the record. The parent or eligible student will be provided information regarding the hearing procedure when notified of the right to a hearing.

Unless the parent or guardian of a student (or student, if above the age of eighteen [18]) objects, "directory information" about a student may be made available to the public, military recruiters, post-secondary educational institutions, prospective employers of those students, as well as school publications such as annual yearbooks and graduation announcements. "Directory information" includes, but is not limited to, a student's name, address, telephone number, electronic mail address, photograph, date and place of birth, dates of attendance, his/her placement on the honor role (or the receipt of other types of honors), as well as his/her participation in school clubs and extracurricular activities, among others. If the student participates in inherently public activities (for example, basketball, football, or other interscholastic activities), the publication of such information will be beyond the control of the District. "Directory information" also includes a student identification (ID) number, user ID, or other unique personal identifier used by a student for purposes of accessing or communicating in electronic systems and a student ID number or other unique personal identifier that is displayed on a student's ID badge, provided the ID cannot be used to gain access to education records except when used in conjunction with one or more factors that authenticate the user's identity, such as a personal identification number (PIN), password or other factor known or possessed only by the authorized user. A student's name and photograph will only be displayed on the district or school's web page(s) after receiving the written permission from the student's parent or student if over the age of 18.

The form for objecting to making directory information available is located in the back of the student handbook and must be completed and signed by the parent or age-eligible student and filed with the building principal's office no later than ten (10) school days after the beginning of each school year or the date the student is enrolled for school. Failure to file an objection by that time is considered a specific grant of permission. The district is required to continue to honor any signed-opt out form for any student no longer in attendance at the district.

The right to opt out of the disclosure of directory information under FERP A does not prevent the District from disclosing or requiring a student to disclose the student's name, identifier, or institutional email address in a class in which the student is enrolled.

Parents and students over the age of 18 who believe the district has failed to comply with the requirements for the lawful release of student records may file a complaint with the U.S. Department of Education at Family Policy Compliance Office U.S. Department of Education 400 Maryland Avenue, SW Washington, DC 20202

STUDENT PUBLICATIONS AND THE DISTRIBUTION OF LITERATURE

Student Publications

All publications that are supported financially by the school or by use of school facilities, or are produced in conjunction with a class shall be considered school-sponsored publications. School publications do not provide a forum for public expression. Such publications, as well as the content of student expression in school-sponsored activities, shall be subject to the editorial control of the District's administration whose actions shall be reasonably related to legitimate pedagogical concerns and adhere to the following limitations.

1. Advertising may be accepted for publications that does not condone or promote products that are inappropriate for the age and maturity of the audience or that endorses such things as tobacco, alcohol, or drugs.

2. Publications may be regulated to prohibit writings which are, in the opinion of the appropriate teacher and/or administrator, ungrammatical, poorly written, inadequately researched, biased or prejudiced, vulgar or profane, or unsuitable for immature audiences.
3. Publications may be regulated to refuse to publish material which might reasonably be perceived to advocate drug or alcohol use, irresponsible sex, or conduct otherwise inconsistent with the shared values of a civilized social order, or to associate the school with any position other than neutrality on matters of political controversy.
4. Prohibited publications include:
 - a. Those that are obscene as to minors;
 - b. Those that are libelous or slanderous, including material containing defamatory falsehoods about public figures or governmental officials, which are made with knowledge of their falsity or reckless disregard of the truth;
 - c. Those that constitute an unwarranted invasion of privacy as defined by state law,
 - d. Publications that suggest or urge the commission of unlawful acts on the school premises;
 - e. Publications which suggest or urge the violation of lawful school regulations;
 - f. Hate literature that scurrilously attacks ethnic, religious, or racial groups.

Student Publications on School Web Pages

Student publications that are displayed on school web pages shall follow the same guidelines as listed above plus they shall

1. Not contain any non-educational advertisements. Additionally, student web publications shall;
2. Adhere to the restrictions regarding use of Directory Information as prescribed in Policy 4.13 including not using a student's photograph when associated with the student's name unless written permission has been received from the student's parent or student if over the age of 18.
3. State that the views expressed are not necessarily those of the School Board or the employees of the district.

Student Distribution of Non-school Literature, Publications, and Materials

A student or group of students who distribute ten (10) or fewer copies of the same non-school literature, publications, or materials (hereinafter "non-school materials"), shall do so in a time, place, and manner that does not cause a substantial disruption of the orderly education environment. A student or group of students wishing to distribute more than ten (10) copies of non-school materials shall have school authorities' review their non-school materials at least three (3) school days' in advance of their desired time of dissemination. School authorities shall review the non-school materials, prior to their distribution and will bar from distribution those non-school materials that are obscene, libelous, pervasively indecent, or advertise unlawful products or services. Material may also be barred from distribution if there is evidence that reasonably supports a forecast that a substantial disruption of the orderly operation of the school or educational environment will likely result from the distribution." Concerns related to any denial of distribution by the principal shall be heard by the superintendent, whose decision shall be final.

The school principal or designee shall establish reasonable regulations governing the time, place, and manner of student distribution of non-school materials.

The regulations shall:

1. Be narrowly drawn to promote orderly administration of school activities by preventing disruption and may not be designed to stifle expression;
2. Be uniformly applied to all forms of non-school materials;

3. Allow no interference with classes or school activities;
4. Specify times, places, and manner where distribution may and may not occurs; and
5. Not inhibit a person's right to accept or reject any literature distributed in accordance with the regulations."
6. Students shall be responsible for the removal of excess literature that is left at the distribution point for more than 10 days?

The Superintendent, along with the student publications advisors, shall develop administrative regulations for the implementation of this policy. The regulations shall include definitions of terms and time lines for the review of materials.

CONTACT WITH STUDENTS WHILE AT SCHOOL

CONTACT BY PARENTS

Parents wishing to speak to their children during the school day shall register first with the office.

CONTACT BY NON-CUSTODIAL PARENTS

If there is any question concerning the legal custody of the student, the custodial parent shall present documentation to the principal or his/her designee establishing the parent's custody of the student. It shall be the responsibility of the custodial parent to make any court ordered "no contact" or other restrictions regarding the non-custodial parent known to the principal by presenting a copy of a file-marked court order. Without such a court order on file, the school will release the child to either of his/her parents. Non-custodial parents who file with the principal a date-stamped copy of current court orders granting visitation may eat lunch, volunteer in their child's classroom, or otherwise have contact with their child during school hours and the prior approval of the school's principal. Such contact is subject to the limitations outlined in Policy 4.16, Policy 6.5, and any other policies that may apply.

Unless prior arrangements have been made with the school's principal, Arkansas law provides that the transfer of a child between his/her custodial parent and non-custodial parent, when both parents are present, shall not take place on the school's property on normal school days during normal hours of school operation.

CONTACT BY LAW ENFORCEMENT, SOCIAL SERVICES, OR BY COURT ORDER

State Law requires that Department of Human Services employees, local law enforcement, or agents of the Crimes Against Children Division of the Department of Arkansas State Police, may interview students without a court order for the purpose of investigating suspected child abuse. In instances where the interviewers deem it necessary, they may exercise a "72-hour hold" without first obtaining a court order. Other questioning of students by non-school personnel shall be granted only with a court order directing such questioning, with permission of the parents of a student (or the student if above eighteen [18] years of age), or in response to a subpoena or arrest warrant.

If the District makes a report to any law enforcement agency concerning student misconduct or if access to a student is granted to a law enforcement agency due to a court order, the principal or the principal's designee shall make a good faith effort to contact the student's parent, legal guardian, or other person having lawful control by court order, or person acting in loco parentis identified on student enrollment forms.

In instances other than those related to cases of suspected child abuse, principals must release a student to either a police officer who presents a subpoena for the student, or a warrant for arrest, or to an agent of state social services or an agent of a court with jurisdiction over a child with a court order signed by a judge. Upon release of the student, the principal or designee shall give the student's parent, legal guardian, or other person having lawful control by court order, or person acting in loco parentis notice that the student has been taken into custody by law enforcement personnel or a state's social services agency. If the principal or designee is unable to reach the parent, he or she shall make a reasonable, good faith effort to get a message to the parent to call the principal or designee, and leave both a day and an afterhours telephone number.

STUDENT VISITORS

The board strongly believes that the purpose of school is for learning. Social visitors, generally, disrupt the classroom and interfere with learning that should be taking place. Therefore, visiting with students at school is strongly discouraged, unless approved by the principal and scheduled in advance. This includes visits made by former students, friends, and/or relatives of teachers or students. Any visitation to the classroom shall be allowed only with the permission of the school principal and all visitors must first register at the office.

STUDENT DISCIPLINE

The Parkers Chapel Board of Education has a responsibility to protect the health, safety, and welfare of the District's students and employees. To help maintain a safe environment conducive to high student achievement, the Board establishes policies necessary to regulate student behavior to promote an orderly school environment that is respectful of the rights of others and ensures the uniform enforcement of student discipline. Students are responsible for their conduct that occurs: at any time on the school grounds; off school grounds at a school sponsored function, activity, or event; going to and from school or a school activity.

The District's administrators may also take disciplinary action against a student for off-campus conduct occurring at any time that would have a detrimental impact on school discipline, the educational environment, or the welfare of the students and/or staff. A student who has committed a criminal act while off campus and whose presence on campus could cause a substantial disruption to school or endanger the welfare of other students or staff is subject to disciplinary action up to and including expulsion. Such acts could include, but are not limited to a felony or an act that would be considered a felony if committed by an adult, an assault or battery, drug law violations, or sexual misconduct of a serious nature. Any disciplinary action pursued by the District shall be in accordance with the student's appropriate due process rights.

The District's licensed personnel policy committee shall review the student discipline policies annually and may recommend changes in the policies to the Parkers Chapel School Board. The Board has the responsibility of determining whether to approve any recommended changes to student discipline policies.

The District's student discipline policies shall be distributed to each student during the first week of school each year and to new students upon their enrollment. Each student's parent or legal guardian shall sign and return to the school an acknowledgement form documenting that they have received the policies.

It is required by law that the principal or the person in charge reports to the police any incidents the person has personal knowledge of or has received information leading to a reasonable belief that a person has committed or threatened to commit an act of violence or any crime involving a deadly weapon on school property or while under school supervision. If the person making the report is not the Superintendent, that person shall also inform the Superintendent of the incident. Additionally, the principal shall inform any school employee or

other person who initially reported the incident that a report has been made to the appropriate law enforcement agency. The Superintendent or designee shall inform the Board of Directors of any such report made to law enforcement.

PROHIBITED CONDUCT

Students and staff require a safe and orderly learning environment that is conducive to high student achievement. Certain student behaviors are unacceptable in such an environment and are hereby prohibited by the Board. Prohibited behaviors include, but shall not be limited to the following.

1. Disrespect for school employees and failing to comply with their reasonable directions or otherwise demonstrating insubordination;
2. Disruptive behavior that interferes with orderly school operations;
3. Willfully and intentionally assaulting or threatening to assault or physically abusing any student or school employee;
4. Possession of any weapon that can reasonably be considered capable of causing bodily harm to another individual;
5. Possession or use of tobacco in any form on any property owned or leased by any public school;
6. Willfully or intentionally damaging, destroying, or stealing school property;
7. Possession of any paging device, beeper, or similar electronic communication devices on the school campus during normal school hours unless specifically exempted by the administration for health or other compelling reasons;
8. Possession, selling, distributing, or being under the influence of an alcoholic beverage, any illegal drug, unauthorized inhalants, or the inappropriate use or sharing of prescription or over the counter drugs, or other intoxicants, or anything represented to be a drug;
9. Sharing, diverting, transferring, applying to others (such as needles or lancets), or in any way misusing medication or any medical supplies in their possession;
10. Cheating, copying, or claiming another person's work to be his/her own;
11. Gambling;
12. Inappropriate student dress;
13. Use of vulgar, profane, or obscene language or gestures;
14. Truancy;
15. Excessive tardiness;
16. Engaging in behavior designed to taunt, degrade, or ridicule another person on the basis of race, ethnicity, national origin, sex, or disability;
17. Hazing, or aiding in the hazing of another student;
18. Gangs or gang-related activities, including belonging to secret societies of any kind, are forbidden on school property. Gang insignias, clothing, "throwing signs" or other gestures associated with gangs are prohibited;
19. Sexual harassment; and
20. Bullying.

Minimum (verbal reprimand) and maximum (expulsion) penalties, for violations of each of the aforementioned offenses and for violations of other practices prohibited by school discipline policies are in the student handbook.

The Board directs each school in the District to develop implementation regulations for prohibited student conduct consistent with applicable Board policy, State and Federal laws, and judicial decisions.

Legal References:

DISRUPTION OF SCHOOL

No student shall by the use of violence, force, noise, coercion, threat, intimidation, fear, passive resistance, or any other conduct, intentionally cause the disruption of any lawful mission, process, or function of the school, or engage in any such conduct for the purpose of causing disruption or obstruction of any lawful mission, process, or function. Nor shall any student encourage any other student to engage in such activities.

Disorderly activities by any student or group of students that adversely affect the school's orderly educational environment shall not be tolerated at any time on school grounds. Teachers may remove from class and send to the principal or principal's designee office a student whose behavior is so unruly, disruptive, or abusive that it seriously interferes with the teacher's ability to teach the students, the class, or with the ability of the student's classmates to learn. Students who refuse to leave the classroom voluntarily will be escorted from the classroom by the school administration.

STUDENT ASSAULT OR BATTERY

A student shall not threaten, physically abuse, or attempt to physically abuse, or behave in such a way as to be perceived to threaten bodily harm to any other person (student, school employee, or school visitor). Any gestures, vulgar, abusive or insulting language, taunting, threatening, harassing, or intimidating remarks by a student toward another person that threatens their well-being is strictly forbidden. This includes, but is not limited to, fighting, racial, ethnic, religious, or sexual slurs.

Furthermore, it is unlawful, during regular school hours, and in a place where a public school employee is required to be in the course of his or her duties, for any person to address a public school employee using language which, in its common understanding, is calculated to: a) cause a breach of the peace; b) materially and substantially interfere with the operation of the school; c) arouse the person to whom it is addressed to anger, to the extent likely to cause imminent retaliation. Students guilty of such an offense may be subject to legal proceedings in addition to student disciplinary measures.

WEAPONS AND DANGEROUS INSTRUMENTS

No student shall possess a weapon, display what appears to be a weapon, or threaten to use a weapon while in school, on or about school property, before or after school, in attendance at school or any school sponsored activity, en route to or from school or any school sponsored activity, off the school grounds at any school bus stop, or at any school sponsored activity or event. Military personnel, such as ROTC cadets, acting in the course of their official duties are accepted.

A weapon is defined as any firearm, knife, razor, ice pick, dirk, box cutter, num chucks, pepper spray or other noxious spray, explosive, or any other instrument or substance capable of causing bodily harm. For the purposes of this policy, "firearm" means any device designed, made, or adapted to expel a projectile by the action of an explosive or any device readily convertible to that use.

Possession means having a weapon, as defined in this policy, on the student's body or in an area under his/her control. If, prior to any questioning or search by any school personnel, a student discovers that he/she has accidentally brought a weapon, other than a firearm, to school including a weapon, other than a firearm, that is in a vehicle on school grounds, and the student informs the principal or a staff person immediately, the student will not be considered to be in possession of a weapon, unless it is a firearm. The weapon shall be confiscated and held in the office until such time as the student's parent/legal guardian shall pick up the weapon from the

school's office. Repeated offenses are unacceptable and shall be grounds for disciplinary action against the student as otherwise provided for in this policy.

Except as permitted in this policy, students found to be in possession on the school campus of a firearm shall be recommended for expulsion for a period of not less than one year. The School Board shall have the discretion to modify such expulsion recommendation for a student on a case-by-case basis. Parents or legal guardians of students expelled under this policy shall be given a copy of the current laws regarding the possibility of parental responsibility for allowing a child to possess a weapon on school property? Parents or legal guardians shall sign a statement acknowledging that they have read and understand said laws prior to readmitting the student. Parents or legal guardians of a student enrolling from another school after the expiration of an expulsion period for a weapons policy violation shall also be given a copy of the current laws regarding the possibility of parental responsibility for allowing a child to possess a weapon on school property. The parents or legal guardians shall sign a statement acknowledging that they have read and understand said laws prior to the student being enrolled in school.

The mandatory expulsion requirement for possession of a firearm does not apply to a firearm brought to school for the purpose of participating in activities approved and authorized by the district that include the use of firearms. Such activities may include ROTC programs, hunting safety or military education, or before or after-school hunting or rifle clubs. Firearms brought to school for such purposes shall be brought to the school employee designated to receive such firearms. The designated employee shall store the firearms in a secure location until they are removed for use in the approved activity.

The district shall report any student who brings a firearm to school to the criminal justice system or juvenile delinquency system by notifying local law enforcement.

TOBACCO AND TOBACCO PRODUCTS

Smoking or use of tobacco or products containing tobacco in any form (including, but not limited to, cigarettes, cigars, chewing tobacco, and snuff) in or on any real property owned or leased by a District school, including school buses owned or leased by the District, is prohibited. Students who violate this policy may be subject to legal proceedings in addition to student disciplinary measures.

With the exception of recognized tobacco cessation products, this policy's prohibition includes any tobacco or nicotine delivery system or product. Specifically, the prohibition includes any product that is manufactured, distributed, marketed, or sold as e-cigarettes, e-cigars, e-pipes, or under any other name or descriptor.

DRUGS AND ALCOHOL

An orderly and safe school environment that is conducive to promoting student achievement requires a student population free from the deleterious effects of alcohol and drugs. Their use is illegal, disruptive to the educational environment, and diminishes the capacity of students to learn and function properly in our schools.

Therefore, no student in the Parkers Chapel School District shall possess, attempt to possess, consume, use, distribute, sell, buy, attempt to sell, attempt to buy, give to any person, or be under the influence of any substance as defined in this policy, or what the student represents or believes to be any substance as defined in this policy. This policy applies to any student who; is on or about school property; is in attendance at school or any school sponsored

activity; has left the school campus for any reason and returns to the campus; is en route to or from school or any school sponsored activity.

Prohibited substances shall include, but are not limited to, alcohol, or any alcoholic beverage, inhalants or any ingestible matter that alter a student's ability to act, think, or respond, LSD, or any other hallucinogen, marijuana, cocaine, heroin, or any other narcotic drug, PCP, amphetamines, steroids, "designer drugs," look-alike drugs, or any controlled substance.

Selling, distributing, or attempting to sell or distribute, or using over-the-counter or prescription drugs not in accordance with the recommended dosage is prohibited.

SUSPENSION FROM SCHOOL

Students not present at school cannot benefit from the educational opportunities the school environment affords. Administrators, therefore, shall strive to find ways to keep students in school as participants in the educational process. There are instances, however, when the needs of the other students or the interests of the orderly learning environment require the removal of a student from school. The Board authorizes school principals or their designees to suspend students for disciplinary reasons for a period of time not to exceed ten (10) school days, including the day upon which the suspension is imposed. The suspension may be in school or out of school. Students are responsible for their conduct that occurs: at any time on the school grounds; off school grounds at a school-sponsored function, activity, or event; going to and from school or a school activity. A student may be suspended for behavior including, but not limited to that which:

1. Is in violation of school policies, rules, or regulations;
2. Substantially interferes with the safe and orderly educational environment;
3. School administrators believe will result in the substantial interference with the safe and orderly educational environment; and/or
4. Is insubordinate, incorrigible, violent, or involves moral turpitude.

The school principal or designee shall proceed as follows in deciding whether or not to suspend a student.

1. the student shall be given written notice or advised orally of the charges against him/her;
2. if the student denies the charges, he/she shall be given an explanation of the evidence against him/her and be allowed to present his/her version of the facts;
3. if the principal finds the student guilty of the misconduct, he/she may be suspended.

When possible, notice of the suspension, its duration, and any stipulations for the student's re admittance to class will be given to the parent(s), legal guardian(s), or to the student if age 18 or older prior to the suspension. Such notice shall be handed to the parent(s), legal guardian(s), or to the student if age 18 or older or mailed to the last address reflected in the records of the school district.

Generally, notice and hearing should precede the student's removal from school, but if prior notice and hearing are not feasible, as where the student's presence endangers persons or property or threatens disruption of the academic process, thus justifying immediate removal from school, the necessary notice and hearing should follow as soon as practicable.

It is the parents' or legal guardians' responsibility to provide current contact information to the district which the school shall use to immediately notify the parent or legal guardian upon the suspension of a student. The notification shall be by one of the following means, listed in

order of priority:

- ☐ A primary call number
 - o The contact may be by voice, voice mail, or text message
- ☐ An email address
- ☐ A regular first class letter to the last known mailing address

The District shall keep a log of contacts attempted and made to the parent or legal guardian. During the period of their suspension, students serving out-of-school suspensions shall not be permitted on campus except to attend a student/parent/administrator conference.

During the period of their suspension, students serving in-school suspension shall not attend any school-sponsored activities during the imposed suspension nor shall the student participate in any school-sponsored activities.

Suspensions initiated by the principal or his/her designee may be appealed to the Superintendent, but not to the Board.

Suspensions initiated by the Superintendent may be appealed to the Board.

EXPULSION

The Board of Education may expel a student for a period longer than ten (10) school days for violation of the District's written discipline policies. The Superintendent may make a recommendation of expulsion to the Board of Education for student conduct deemed to be of such gravity that suspension would be inappropriate, or where the student's continued attendance at school would disrupt the orderly learning environment or would pose an unreasonable danger to the welfare of other students or staff.

The Superintendent or his/her designee shall give written notice to the parents or legal guardians (mailed to the address reflected on the District's records) that he/she will recommend to the Board of Education that the student be expelled for the specified length of time and state the reasons for the recommendation to expel. The notice shall give the date, hour, and place where the Board of Education will consider and dispose of the recommendation.

The hearing shall be conducted not later than ten (10) school days following the date of the notice, except that representatives of the Board and student may agree in writing to a date not conforming to this limitation.

The President of the Board, Board attorney, or other designated Board member shall preside at the hearing. The student may choose to be represented by legal counsel. Both the district administration and School Board also may be represented by legal counsel. The hearing shall be conducted in open session of the Board unless the parent, or student if age 18 or older, requests that the hearing be conducted in executive session. Any action taken by the Board shall be in open session.

During the hearing, the Superintendent, or designee, or representative will present evidence, including the calling of witnesses, that gave rise to the recommendation of expulsion. The student, or his/her representative, may then present evidence including statements from persons with personal knowledge of the events or circumstances relevant to the charges against the student. Formal cross-examination will not be permitted. However, any member of the Board, the Superintendent, or designee, the student, or his/her representative may question anyone making a statement and/or the student. The presiding officer shall decide questions concerning the appropriateness or relevance of any questions asked during the hearing.

Except as permitted by policy 4.22, the Superintendent shall recommend the expulsion of any student for a period of not less than one (1) year for possession of any firearm prohibited on school campus by law. The Superintendent shall, however, have the discretion to modify the expulsion recommendation for a student on a case-by-case basis. Parents or legal guardians of a student enrolling from another school after the expiration of an expulsion period for a weapons policy violation shall be given a copy of the current laws regarding the possibility of parental responsibility for allowing a child to possess a weapon on school property. The parents or legal guardians shall sign a statement acknowledging that they have read and understand said laws prior to the student being enrolled in school.

The Superintendent and the Board of Education shall complete the expulsion process of any student that was initiated because the student possessed a firearm or other prohibited weapon on school property regardless of the enrollment status of the student.

SEARCH, SEIZURE, AND INTERROGATIONS

The District respects the rights of its students against arbitrary intrusion of their person and property. At the same time, it is the responsibility of school officials to protect the health, safety, and welfare of all students enrolled in the District in order to promote an environment conducive to student learning. The Superintendent, principals, and their designees have the right to inspect and search school property and equipment. They may also search students and their personal property in which the student has a reasonable expectation of privacy, when there is reasonable suspicion to believe such student or property contains illegal items or other items in violation of Board policy or dangerous to the school community. School authorities may seize evidence found in the search and disciplinary action may be taken. Evidence found which appears to be in violation of the law shall be reported to the appropriate authority.

School property shall include, but not be limited to, lockers, desks, and parking lots, as well as personal effects left there by students. When possible, prior notice will be given and the student will be allowed to be present along with an adult witness, however, searches may be done at any time with or without notice or the student's consent. A personal search must not be excessively intrusive in light of the age and sex of the student and the nature of the infraction.

The Superintendent, principals, and their designees may request the assistance of law enforcement officials to help conduct searches. Such searches may include the use of specially trained dogs.

A school official of the same sex shall conduct personal searches with an adult witness of the same sex present.

State law requires that Department of Human Services employees, local law enforcement, or agents of the Crimes Against Children Division of the Department of Arkansas State Police, may interview students without a prior court order for the purpose of investigating suspected child abuse. In instances where the interviewers deem it necessary, they may exercise a "72-hour hold" without first obtaining a court order. Other questioning of students by non-school personnel shall be granted only with a court order directing such questioning, with permission of the parents of a student (or the student if above eighteen [18] years of age), or in response to a subpoena or arrest warrant.

If the District makes a report to any law enforcement agency concerning student misconduct or if access to a student is granted to a law enforcement agency due to a court order, the principal or the principal's designee shall make a good faith effort to contact the student's parent, legal guardian, or other person having lawful control by court order, or person acting in loco parentis on student enrollment forms.

In stances other than those related to cases of suspected child abuse, principals must release a student to either a police officer who presents a subpoena for the student, or a warrant for arrest, or to an agent of state social

services or an agent of a court with jurisdiction over a child with a court order signed by a judge. Upon release of the student, the principal or designee shall give the student's parent, legal guardian, or other person having lawful control by court order, or person acting in loco parentis notice that the student has been taken into custody by law enforcement personnel or a state's local services agency. If the principal or designee is unable to reach the parent, he or she shall make a reasonable, good faith effort to get a message to the parent to call the principal or designee, and leave both a day and an after hours telephone number.

STUDENTS' VEHICLES

A student who has presented a valid driver's license and proof of insurance to the appropriate office personnel, may drive his/her vehicle to school. Vehicles driven to school shall be parked in the area designated for student parking. Parking on school property is a privilege which may be denied to a student for any disciplinary violation, at the discretion of the student's building principal.

Students are not permitted to loiter in parking areas and are not to return to their vehicles during the school day for any reason unless given permission to do so by school personnel. It is understood that there is no expectation of privacy in vehicles in parking areas. Drivers of vehicles parked on a school campus will be held accountable for illegal substances or any other item prohibited by District policy found in their vehicle. The act of a student parking a vehicle on campus is a grant of permission for school or law enforcement authorities to search that vehicle.

EDUCATIONAL PHILOSOPHY

The Parkers Chapel School District assumes the responsibility of providing students attending its schools a high quality education that challenges each student to achieve to their maximum potential. The District shall endeavor to create the environment within the schools necessary to attain this goal. The creation of the necessary climate shall be based on the following core beliefs:

1. The District's vision statement will be developed with input from students, parents, business leaders, and other community members.
2. All students can be successful learners.
3. Students learn at different rates and in different ways.
4. A primary goal shall be to give students the skills they need to be life-long learners.
5. The education of all citizens is basic to our community's well-being.
6. Student achievement is affected positively by the involvement of parents and the community in the schools.
7. The District is responsible for helping cultivate good citizenship skills in its students.
8. Students reflect the moral and ethical values of their environment.
9. All people have a right to a safe environment.
10. Each person is responsible for his/her own actions.
11. Innovation involves taking risks.
12. Schools are responsible for creating the conditions that promote success.
13. Each person is entitled to retain his/her dignity.
14. All people have the right to be treated with respect and the responsibility to treat others respectfully.
15. For teachers to succeed in cultivating high student achievement, they need to be given the materials, training, and environment necessary to produce such results.

USE OF COPYRIGHTED MATERIALS

The Board of Education encourages the enrichment of the instructional program through the proper use of supplementary materials. To help ensure the appropriate use of copyrighted materials, the Superintendent, or his designee, will provide district personnel with information regarding the "fair use" doctrine of the U.S. Copyright Code as detailed in the "Agreement on Guidelines for Classroom Copying in Not-for-Profit Educational Institutions with Respect to Books and Periodicals" and "Guidelines for Educational Uses of Music."

The District will not be responsible for any employee violations of the use of copyrighted materials.

COMPUTER SOFTWARE COPYRIGHT

The District shall observe copyright laws governing computer software reproduction. Unless specifically allowed by the software purchase agreement, the Copyright Act allows the purchaser of software to:

1. Make one copy of software for archival purposes in case the original is destroyed or damaged through mechanical failure of a computer. However, if the original is sold or given away, the archival copy must be destroyed;
2. Make necessary adaptations to use the program; and/or
3. Add features to the program for specific applications. These improvements may not be sold or given away without the copyright owner's permission.

The District shall abide by applicable licensing agreements before using computer software on local-area or wide-area networks.

RELIGION IN THE SCHOOLS

The First Amendment of the Constitution states that "Congress shall make no law respecting the establishment of religion, or prohibiting the free exercise thereof. .." As the Supreme Court has stated (Abington School District v. Schempp, 374 U.S. 203) the Amendment thus, "embraces two concepts freedom to believe and freedom to act. The first is absolute but, in the nature of things, the second cannot be." Therefore, it is the Board's policy that the school system, as an agency of the government, shall be neutral in matters regarding religion and will not engage in any activity that either advocates or disparages religion. The District shall assume no role or responsibility for the religious training of any student.

The need for neutrality does not diminish our school system's educational responsibility to address the historical role of religion in the development of our culture. Since we live in a diverse society, the District's goal shall be to address the subject of religion objectively in such a way that it promotes an understanding of, and tolerance for, each other's religious or non-religious views.

Discussions concerning religious concepts, practices, or disciplines are permissible when presented in a secular context in their relation to an inclusive study of religion or to the study of a particular region or country. The discussions shall be such that they are objective and academically informational and do not advocate, nor denigrate any particular form of religious practice. Accommodation will be considered for those portions of instructional activities in the schools that unduly burden a student's sincere religious belief provided such accommodation doesn't amount to a significant change in curriculum, program, or course of instruction and when it is possible that a substitution of equally rigorous material that advances the same instructional goals can be arranged. Parents and students are advised that such accommodations are easier to grant when the objection is to non-state mandated Framework material than if the material is required by the Frameworks.

A student or the student's parent can request the student's teacher accommodate the student's objection based on a religious belief to an instructional activity. Any such request must be made at least 25 school days prior to the assignment's due date. Any objection must be raised in accordance with this policy's requirements or it will not be considered.

Upon receiving such a request, the student's teacher shall determine within five (5) work days if an accommodation is possible under the provisions of this policy. If the teacher decides an accommodation cannot be made or if the student or the student's parent believes the accommodation to be unreasonable, the student or the student's parent may request a conference with the teacher and the teacher's principal. A requested conference will occur at a time of mutual convenience, but no later than five (5) working days following the request. The principal shall have five (5) working days in which to make a decision on the appeal. If the student, the student's parent, or the teacher is unsatisfied with the principal's decision, it may be appealed to the District Superintendent who shall convene a conference between the student, the parent and the teacher. The requested conference will occur at a time of mutual convenience, but no later than five (5) working days following the request. The Superintendent shall have five (5) working days in which to make a decision on the appeal which shall be final with no further right of appeal.

The teacher in charge of each classroom may, at the opening of school each day, conduct a brief period of silence with the participation of all students in the classroom who desire to participate. Students and employees may engage in personal religious practices, such as prayer, at any time, and shall do so in a manner and at a time so that the educational process is not disrupted.

HOMEWORK

Homework is considered to be part of the educational program of the District. Assignments shall be an extension of the teaching/learning experience that promotes the student's educational development. As an extension of the classroom, homework must be planned and organized and should be viewed by the students as purposeful.

Teachers should be aware of the potential problem students may have completing assignments from multiple teachers and vary the amount of homework they give from day to day.

Parents shall be notified of this policy at the beginning of each school year.

GRADING

Parents or guardians shall be kept informed concerning the progress of their student. Parent-teacher conferences are encouraged and may be requested by parents, guardians, or teachers. If the progress of a student is unsatisfactory in a subject, the teacher shall attempt to schedule a parent-teacher conference. In the conference, the teacher shall explain the reasons for difficulties and shall develop, cooperatively with the parents, a plan for remediation which may enhance the probability of the student succeeding. The school shall also send timely progress reports and issue grades for each nine-week grading period to keep parents/guardians informed of their student's progress.

The evaluation of each student's performance on a regular basis serves to give the parents/guardians, students, and the school necessary information to help effect academic improvement. Students' grades shall reflect only the extent to which a student has achieved the expressed educational objectives of the course.

The grades of a child in foster care shall not be lowered due to an absence from school due to:

- (1) A change in the child's school enrollment;
- (2) The child's attendance at a dependency-neglect court proceeding; or
- (3) The child's attendance at court-ordered counseling or treatment.

For the purpose of determining grade point averages, the numeric value of each letter grade shall be

A=4points

B = 3 points

C = 2 points
 D = 1 point
 F = 0 points

The grade point values for AP and approved honor courses shall be one point greater than for regular courses with the exception that an F shall still be worth 0 points.

WEB SITE PRIVACY POLICY

The Parkers Chapel School District operates and maintains a web site for the purpose of informing the citizens of the district about its activities. The web site does not use "cookies" or ISP addresses to collect or retain personally identifying information about visitors to its web site nor is any such information given to "third parties." Any data collected is used solely for the purpose of monitoring site activity to help the district improve the usefulness of the site to its visitors.

The site serves no commercial purpose and does not collect any information from individuals for such purpose.

Photographs of students, when associated with the student's name, shall not be displayed on any page of the district's web site without the prior written consent of the parent (or the student if 18 or older). The site provides for email communication between the District and individuals for the purpose of exchanging information regarding the District and its activities or between teachers and their students.

The site may also provide for password protected communication between the District and its staff.

VISITORS TO THE SCHOOLS

Parents, grandparents, legal guardians, business, and community members are welcome and encouraged to visit District schools. To minimize the potential for disruption of the learning environment, visitors, for a purpose other than to attend an activity open to the general public, are required to first report to the school's main office.

No one shall be exempt from this requirement.

Parents and legal guardians are encouraged to participate in regularly scheduled visitation events such as school open houses and parent/teacher conferences. Additional conferences are best when scheduled in advance.

Conferences shall be scheduled at a time and place to accommodate those participating in the conference. Visits to individual classrooms during class time are permitted on a limited basis with the principal's prior approval and the teacher's knowledge.

Parents wishing to speak to their children during the school day shall register first with the office. The District has the right to ask disruptive visitors to leave its school campuses. Principals are authorized to seek the assistance of law enforcement officers in removing any disruptive visitors who refuse to leave school property when requested to do so.

Visitors who are disruptive become "trespassers" as defined in A.C.A. § 6-21-606. As such, they lose their right to be on campus.

PERSONAL PROPERTY

To avoid confusion and the potential for misunderstandings, District staff who bring personal property to school to use in the performance of their jobs should label the items with their names. Any such items should be removed from the school at the close of school each year. The District assumes no responsibility for damage to, or the loss of, personal property brought to District facilities by District staff.

In any calendar year, a public school employee is entitled to the following leave in order to serve as an organ donor or a bone marrow donor:

- 1.No more than (7) days of leave to serve as a bone marrow donor; and
- 2.No more than (30) days of leave to serve as an organ donor.

In order to qualify for the leave, the employee must:

- 1.Request the leave in writing;
- 2.Provide the District written verification by the physical to perform the transplantation that the employee is to serve as a human organ or bone marrow donor; and
- 3.Provide the District written verification by the physician performing the transplantation that the employee did serve as a human organ or bone marrow donor.

A school employee may use the leave as provided in this section without loss or reduction in pay, leave, or credit for time of service.

The District shall not penalize an employee for requesting or obtaining leave pursuant to this section.

OVERTIME, COMPTIME, and COMPLYING WITH FLSA

The Parkers Chapel School District shall comply with those portions of the Fair Labor Standards Act that relate to the operation of public schools. The act requires that covered employees be compensated for all hours worked at greater than or equal to the applicable minimum wage for workweeks of less than or equal to 40 hours." It also requires that employees be compensated for workweeks of greater than 40 hours at 1 1/2 times their regular rate of pay either monetarily" or through compensatory time c.

Definitions

Overtime is hours worked in excess of 40 per workweek. Compensation given for hours **not** worked such as for holidays or sick days do **not** count in determining hours worked per workweek.

Workweek is the seven day consecutive period of time from 12 :OOAM on Sunday to midnight on the following Saturday.' Each workweek is independent of every other workweek for the purpose of determining the number of hours worked and the remuneration entitled to by the employee for that week.

Exempt Employees are those employees who are not covered under the FLSA.^F They include administrators and professional employees such as teachers, counselors, nurses, and supervisors? Any employee who is unsure of their coverage status should consult with the District's Administration.

Covered Employees (also defined as non-exempt employees) are those employees who are not exempt, generally termed classified, and include bus drivers, clerical workers, maintenance personnel, custodians, transportation workers, receptionists, paraprofessionals, food service workers, secretaries, and bookkeepers.

Regular Rate of Pay includes all forms of remuneration for employment' and shall be expressed as an hourly rate. For those employees previously paid on a salary basis, the salary shall be converted to an hourly equivalent. Employees shall be paid for each and every hour worked.

Employment Relationships

The District does not have an employment relationship in the following instances.

- 1.Between the District and student teachers;
- 2.Between the District and its students;
- 3.Between the District and individuals who as a public service volunteer or donate their time to the District without expectation or promise of compensation.

The District does not have a joint employment relationship in the following instances.

1. Between the District and off-duty policemen or deputies who are hired on a part-time basis for security purposes or crowd control. The District is separate from and acts independently of other governmental entities.
2. Between the District and any agency contracted with to provide transportation services, security services, or other services.

Hours Worked

Employees shall be compensated for all the time they are required to be on duty and shall be paid for all hours worked each workweek. Employees shall accurately record the hours they work each week.

The District shall determine the manner to be used by employees to accurately record the hours they work. Each employee shall record the exact time they commence and cease work including meal breaks. Employees arriving early may socialize with fellow workers who are off the clock, but shall not commence working without first recording their starting time.

Employees shall sign in/clock in where they start work and sign out/clock out at the site where they cease working. Employees who do not start and end their workday at the same site shall carry a time card or sheet with them to accurately record their times. They shall turn in their time sheets or cards to their immediate supervisor no later than the following Monday morning after reviewing them to be sure that they accurately reflect their hours worked for that week."

Each employee is to personally record his or her own times. Any employee who signs in or out (or who punches a time clock) for another employee or who asks another employee to do so for him or her will be dismissed.

Employees whose normal workweek is less than 40 hours and who work more than their normal number of hours in a given workweek may, at the District's option, be given compensatory time for the hours they worked in excess of their normal workweek in lieu of their regular rate pay. Compensatory time given in this manner shall be subject to the same conditions regarding accumulation and use as compensatory time given in lieu of overtime pay.

Breaks and Meals

Each employee working more than 20 hours per week shall be provided two, paid, 15 minute duty free breaks per work day.

Meal periods which are less than 30 minutes in length or in which the employee is not relieved of duty are compensable" Employees with a bona fide meal period shall be completely relieved of their duty to allow them to eat their meal which they may do away from their work site, in the school cafeteria, or in a break area.

The employee shall not engage in any work for the District during meal breaks except in rare and infrequent emergencies.

Overtime

Covered employees shall be compensated at not less than 1.5 times his or her regular rate of pay for all hours worked over 40 in a workweek. M Overtime compensation shall be computed on the basis of the hours worked in each week and may not be waived by either the employee or the District. Overtime compensation shall be paid on the next regular payday for the period in which the overtime was earned."

Employees working two or more jobs for the District at different rates of pay shall be paid overtime at a weighted average of the differing wages." This shall be determined by dividing the total regular remuneration for all hours worked by the number of hours worked in that week to arrive at the weighted average. One half that rate is then multiplied times the number of hours worked over 40 to arrive at the overtime compensation due.

Provided the employee and the District have a written agreement or understanding before the work is performed, P compensatory time off may be awarded in lieu of overtime pay for hours worked over 40 in a workweek and shall be awarded on a one-and-one-half (1 1/2) time basis for each hour of overtime worked. The District reserves the right to determine if it will award compensatory time in lieu of monetary pay for the overtime worked. The maximum number of compensatory hours an employee may accumulate at a time is 20.⁶ The employee must be able to take the compensatory time off within a reasonable period of time that is not unduly disruptive to the District.

An employee whose employment is terminated with the District, whether by the District or the employee shall receive monetary compensation for unused compensatory time. Of the following methods, the one that yields the greatest money for the employee shall be used.

1. The average regular rate received by the employee during the last 3 years of employment. Or
2. The final regular rate received by the employee"

Overtime Authorization

There will be instances where the district's needs necessitate an employee work overtime. It is the Board's desire to keep overtime worked to a minimum. To facilitate this, employees shall receive authorization from their supervisor in advance of working overtime except in the rare instance when it is unforeseen and unavoidable.

All overtime worked will be paid in accordance with the provisions of the FLSA, but unless the overtime was pre-approved or fit into the exceptions noted previously, disciplinary action must be taken for failure to follow District policy. In extreme and repeated cases, disciplinary action could include the termination of the employee.

Leave Requests

All covered employees shall submit a leave request form prior to taking the leave if possible. If, due to unforeseen or emergency circumstances, advance request was not possible the leave form shall be turned in the day the employee returns to work. Unless specifically granted by the Board for special circumstances, the reason necessitating the leave must fall within District policy.

Payment for leave could be delayed or not occur if an employee fails to turn in the required leave form.

Leave may be taken in a minimum of 4 hour increments.

Record Keeping' and Postings

The District shall keep and maintain records as required by the FLSA for the period of time U required by the act.

The District shall display minimum wage posters where employees can readily observe them.

Cooperation with Enforcement Officials

All records relating to the FLSA shall be available for inspection by, and District employees shall cooperate fully with, officials from the DOL and/or its authorized representatives in the performance of their jobs relating to:

1. Investigating and gathering data regarding the wages, hours, and other conditions and practices of employment;
2. Entering, inspecting, and/or transcribing the premises and its records;
3. Questioning employees and investigating such facts as the inspectors deem necessary to determine whether any person has violated any provision of the FLSA.

SCHOOL BUS DRIVER'S USE OF CELL PHONES

Any driver of a motor vehicle which is privately owned and operated for compensation, or which is owned, leased or otherwise operated by, or for the benefit of the District, and is operated for the transportation of children to or from school or school sponsored activity shall not operate a school bus while using a cell phone unless the vehicle is safely off the road with the parking brake engaged, to call for assistance due to a mechanical problem with the bus, or to communicate with any of the following emergency situations.

An emergency system response operator or 911 public safety communications dispatcher;
A hospital or emergency room; A physician's office or health clinic; An ambulance or fire department rescue service; A fire department, fire protection district, or volunteer fire department; or A police department.

CLASSIFIED PERSONNEL TERMINATION AND NON-RENEWAL

For procedures relating to the termination and non-renewal of classified employees, please refer to the Public School Employee Fair Hearing Act A.C.A. §6-17-1701 through 1705. The Act specifically is not made a part of this policy by this reference.

A copy of the code is available in the office of the principal of each school building.

CASH RECEIPTS

All money and checks must be stored in a safe or locked cabinet if a safe is not available until they are deposited. No cash or checks are to be left in any classroom overnight. Staff, other than the District bookkeeper, who collect funds in the course of their employment should deposit the funds daily with the bookkeeper. Bookkeepers should deposit daily, unless otherwise directed by the superintendent or business manager. All money and checks must be deposited prior to holidays and weekends. Money or checks received should never be taken home by an employee. Theft or suspected theft of activity funds should be reported to the Campus Principal and Business Manager immediately.

All funds collected must be supported by some type of record documenting the sources and amount of funds. All currency and coins should be counted immediately and documented immediately. The totals of cash and checks should be compared to the totals reflected on the supporting documentation and any differences reconciled immediately.

CONTRACTS

Individuals do not have the authority to enter into contracts and/or grant agreements without the express written approval of the Superintendent.

CREDIT CARDS

Purchasing Rules and Procedures

The following points should be reviewed before using a school issued Wal-Mart or other credit card:

All purchases made on the card must be only for authorized school purposes. You are responsible for the security of the card and the transactions made with it.

The card may only be used to purchase items that are included in a currently approved budget line item or activity fund with a positive cash balance.

All receipts must be turned in along with the card immediately to the Admin Office as soon as you make the purchase.

The card is not intended to bypass or avoid appropriate purchasing or payment procedures as outlined in this *Business & Finance Procedures Manual*. Credit card purchases follow the same approval process

Purchases made with federal funding should only be made for allowable costs relevant to the program guidelines.

Duties and Responsibilities

The Accounts Payable Specialist is designated to answer questions, address issues and oversee the administration of the Wal-Mart and other card programs.

Wal-Mart Card Controls

Upon approval of use, the purchaser will secure card from Admin Office. Cards will be checked out and checked in. Always obtain a receipt when using the card. It is every purchaser's responsibility to ensure there is a receipt for each purchase. After each purchase, the original receipt attached to the PO along with the card is given to the Admin Office by the purchaser. If a receipt is lost or stolen, the purchaser should obtain a duplicate copy.

Gas Card Controls

Upon approval of transportation by an administrator, the driver will secure a card. Cards will be checked out and checked in. Always obtain a receipt when using the card. It is every purchaser's responsibility to ensure there is a receipt for each purchase. The card and the receipt must be turned in to Admin Office by the purchaser. If a receipt is lost or stolen, the purchaser should obtain a duplicate copy.

Security

Failure to return proper documentation will make the purchaser fiscally responsible for any purchases made with the school card. The purchaser is responsible for the security of the card. Guard the card account number carefully. The only person authorized to use the card is the purchaser to whom the card is signed out. This card is to be used for school purposes only. The card is not intended for personal use. Personal purchases will be considered misappropriation of District funds, a criminal offense, and will be reported to the proper authorities. Accidental use of a school-issued card for personal use must be reported to your supervisor immediately and repaid to the District within ten (10) business days of discovery.

Lost or Stolen Cards

If a card is lost or stolen, immediately contact your Principal and the Accounts Payable Specialist. Prompt action can reduce the District's liability for fraudulent activity.

PAYROLL

All employees are paid on a monthly basis. Payday will be the 15th of each month unless it falls on a weekend or holiday. In that event, payday will be the last school day before the 15th unless otherwise approved by the Superintendent. Printed checks are delivered by an authorized employee to each campus/location on payday for all employees except substitute teachers. Substitutes' checks are mailed by U.S. Mail at the end of the school day on the 15th unless they are signed up for direct deposit. Direct deposit statements will be delivered to each campus/location on payday for those employees.

Employees are encouraged to have their pay directly deposited to their bank account. The benefits of Direct Deposit include: paid one day prior to the regular payday, automatic posting of paychecks to individual's bank accounts, preventing the possibility of a lost check and eliminating time spent driving to the bank or waiting in line at bank to deposit the check. Direct deposit can be initiated by completing the Direct Deposit Form and bringing it to the Payroll Office before the next payroll deadline. During the summer months, all paper checks will be mailed. Paychecks will not be released to any person other than the district employee named on the check without the employee's written authorization.

Substitute pay will be calculated as of the 5th of the month. Any employment after the 5th will be paid on the next month's payroll.

PURCHASING

Purchasing Overview

Public purchasing differs distinctively from private sector purchasing. Private businesses can purchase from only one vendor and their choice may be made on the basis of price, convenience, or on personal considerations. In sharp contrast, public entities must conduct all dealings in the public eye and must adhere to strict legal guidelines.

As a public entity, our district must make its purchases within relevant statutes and policies. Although bound by these constraints, the school district's objective is to purchase the best products, materials and services at the lowest practical prices.

The District's policies and procedures pertaining to purchasing are derived from state law. Statute and Board of Trustees policy requirements outline how school districts procure goods and services, the types of competitive processes that must be used, and the exceptions to these requirements.

Responsibility for purchasing and adhering to Arkansas law and Board Policy rests with each campus. Questions about purchasing laws and policies can be directed to the Business Manager or Superintendent. If formal bid or quote processes are required by state law, please contact the Business Manager or Superintendent.

PURCHASE ORDERS

Approval of Transactions

Approval of transactions involving school funds must be approved by the following:

- Campus Principal
- Superintendent or Designee

Regular Purchase Order

A purchase order is filled out by the Requestor making sure the Vendor (who the check will be written to) information is complete and the items are described enough so that the administrator(s) who have authority to approve can tell what they are approving to be paid for. The purchase order is then turned into the campus principal for approval. The campus Principal then gives the Requestor authority to make the named purchase. Once the item(s) are received, the requestor will sign and take the documentation (receipt, packing slip, etc.) to the campus principal to be attached to the purchase order. The completed purchase order is sent to the Administration Building as approval to make payment to vendor.

For a check to be written, the following will need to be sent to Business Office:

- Copy of PO
- Signed Receipt/Packing Slip (or other documentation)

Confirming Purchase Orders

Confirming POs are used when pre-approved items have already been purchased or for vendors that will not send an invoice (i.e. Field trips, registrations, memberships, reimbursements, etc.) but the amount needed is known. Check the "Confirming PO" box on the purchase order and follow the normal PO process with the proper documentation. These PO's will be sent to the Administration Building upon approval by the campus principal, and will be placed immediately for a payment. Checks will be mailed unless otherwise noted on the PO.

Advance Purchase Orders

Advance Purchase Orders are used when an invoice is not available (i.e. the amounts needed are not known or for student travel). Check the "Advance PO" box on the purchase order. These PO's will be sent to Administration Building upon approval from campus principal. Upon approval, the check will be written and the requestor will be notified. The requestor must come to the Admin building to pick up check and sign a form of responsibility. ONLY the requestor may pick up the check. Upon the completion of the expenditure (within one week), the requestor will return to the Admin building all signed receipts and/or cash for the amount they were given. The requestor is financially responsible for any discrepancies.

RECEIVING MERCHANDISE-PACKING LIST

A packing list is a document that is sent by the vendor, usually packed inside or attached to the merchandise you receive. The packing list will generally describe the merchandise being sent.

CHECK SCHEDULE

Documentation

When items on the purchase order are received in an acceptable condition at

your campus, and the documentation is received by the campus secretary, who will place it with the purchase order, it will be submitted for payment to the Administration Office . Items cannot be paid until an invoice is received from the vendor. If the invoice does not match the PO, the campus secretary is responsible for reconciling the invoice and packing slip with the purchase order, getting appropriate signatures and promptly remitting to the Business Office by campus mail.

Order Completion – NO BACKORDERS

After ordering, the purchase order should be held at the campus until all goods are received and invoiced. Be sure that your order is complete and that any items on backorder are cancelled before submitting the invoice to the campus secretary. The campus secretary will send the PO to Business Office for payment. A new requisition and PO will need to be prepared and submitted for any items cancelled that you wish to re-order.

Deadlines

The purchase order, along with proper documentation, must be signed and delivered to Administration Office by normal interschool mail on the 1st or the 15th of each month. Checks will be written within one week of these dates. Bill checks are only written twice a month.

Activity Account PO form along with proper documentation must be signed and delivered to Administration Office by normal interschool mail by noon the first day of the week. Checks will be disbursed on Friday at noon.

Exceptions

If a deadline is missed, approval by the Superintendent must be granted to the appropriate campus administrator before any exception to the above procedure will be made. Exceptions may be granted on a case-by-case basis depending on circumstances.

Payment Status

Please contact Business Office by email for the payment status of an invoice.

DISTRIBUTION OF CHECKS

All checks will be disbursed by campus administrators who may pick up checks or pay vouchers on the designated Payday or when notified of PO checks and Activity Account checks, unless it's an Advanced check.

FUNDRAISING

All fundraising activities held in the District or in the name of the District must be pre-approved in writing by the Superintendent and affected school principal and shall not exceed two (2) events without prior School Board approval. Approval will be predicated on the potential for return relative to the time and energy to be invested in the fundraising. Fundraising that conflicts excessively with and/or detracts from student or teacher instructional time in either the planning or the execution of the activity will not be approved.

Neither an individual school nor the District shall be liable for any contract between clubs or organizations and third parties.

Student participation in any fundraising activity shall:

1) Be voluntary. Students who choose not to participate shall not forfeit any school privileges. It shall not be considered discriminatory to reward those who participate; and

2) Not influence or affect the student's grade.

Secondary Schools

Fundraising in the secondary schools may only be done by officially sanctioned student clubs, spirit groups, school PTAs, or parent booster clubs. Student clubs and spirit groups must receive written approval from their sponsor and the school principal before submitting the fundraising proposal to the Superintendent. Door to door fundraising activities are not permitted.

Elementary Schools (K-6)

Fundraising in the elementary schools may only be done by the school or a school sponsored organization.

Door to door fundraising activities are not permitted.

Schools must provide written notification of the following to parents or legal guardians of elementary students who participate in fundraising programs.

- 1) Student participation in fundraising programs is voluntary;
- 2) Students who do not participate will not forfeit any school privileges;
- 3) Students may not participate in fundraising programs without written parental permission returned to school authorities.

ACTIVITY ACCOUNT

The District shall maintain an account of activity funds. The funds for the account are those revenues derived from the sale of tickets to athletic contests or other school sponsored activities; the sale of food other than that sold in the cafeteria; the sale of soft drinks, school supplies, and books; and fees charged by clubs and organizations. Activity funds are considered "school funds" and as such may only be spent for school related purposes.

The Superintendent shall be the custodian of all activity funds and shall be responsible and accountable for the funds. The Superintendent may appoint a co-custodian for each school in the District who shall also be responsible for the activity funds he/she maintains.

Activity funds are raised at the campus level for specific groups.

The request for funds from an activity account will be made on the Activity Fund Purchase Order form. The form is given to the campus secretary for approval by the campus administrator. Once approved the normal PO procedures are followed. If the funds are being expended from a student group, the PO must have a student officer's signature.

EXPENSE REIMBURSEMENT

The requirements of this policy shall govern reimbursement for expenses related to travel and/or attendance at conferences and professional development activities incurred by district employees and/or members of the Board of Directors on behalf of the district. Employees are only eligible for reimbursement for travel expenses for travel which has been approved in advance. Original receipts must accompany all requests for reimbursement to the extent that such receipts are customarily available. For a receipt to be valid it should contain the name of the issuing company, the date, and the amount. No cash advances shall be made for travel.

Mileage, lodging, and meal expenses will not be reimbursed when incurred for the personal convenience of the employee and not required by the reason for the travel. Reimbursement for

travel shall be for the lesser of the cost between travel by air or by car with some consideration allowed for length of time of the method of travel.

To the extent practicable, employees shall have the district pay initial conference and professional development registration fees and associated necessary and materials. In the occasional circumstances where this is not practical, the district shall reimburse the employee for such fees if they were authorized in advance and are supported with proper receipts. The district will not reimburse expenses of any non-school board member or non-employee who accompanies the school board member or employee during his/her school related travel.

Employees will use the most current Travel Reimbursement Request form.

Forms should be submitted within a week of returning from the travel. Approval must be granted by campus administrator prior to trip. Mileage is determined using an established method of identifying mileage by including a MapQuest printout for distance from school to point of workshop/conference. Any deviation of this method must be approved by Superintendent or designee. Actual itemized receipts must be used as documentation for purchase of meals or other items. Do not use highlighter on receipts. Circle amounts being reimbursed for on the receipt. Attach any documentation proving attendance.

Reimbursable Expenses

Mileage that is driven for a district sanctioned purpose in an employee's personal vehicle shall be reimbursed provided appropriate documentation is submitted establishing the date and time, place, and purpose of the travel. Mileage shall be reimbursed at the current rate authorized by the state/IRS and shall be based on the shortest, most reasonable, route available.

Meals may be reimbursed for travel which necessitates an overnight stay when submitted according to the dictates of this policy.

MEALS PER DIEM-Only distributed for overnight trips.

Breakfast: Leave before 6am/Return after 8am

Lunch: Leave before 11am/Return after 1pm

Dinner: Leave before 5pm/Return after 7pm

Travel necessitating overnight lodging shall be reimbursed to the extent that it is not lavish and is reasonable based on circumstances of the expenditure. Proper documentation establishing the date and time, place, and purpose of the travel must be submitted along with a receipt for the overnight accommodations. To the extent practicable, employees shall receive assistance from administrators or their designee in arranging travel plans to help keep expenses to a minimum.

Expenses not covered

The district shall not reimburse the following items/categories of expenses.

- Alcoholic beverages;
- Entertainment expenses - including sports or sporting events; pay per view or game expenses at motels;
- Replacement due to loss or theft;
- Discretionary expenses for items such as clothing or gifts;
- Medical expenses incurred while on route to or from or at the destination of the reason for the travel;
- Optional or supplementary insurance obtained by the employee for the period covered during the travel; and

Credit Cards

Only those employees specifically issued credit cards to be used in the performance of their jobs to purchase goods, services, or supplies on behalf of the district shall be allowed to use such cards. Employees who incur reimbursable expenses as defined in this policy are expected to pay for them initially by any means they choose and then submit their request for reimbursement. The district assumes no responsibility for the payment of any personal credit card charges incurred by a district employee.

Airport Associated Expenses

Receipts for airport associated expenses are required for reimbursement. All airline flights shall be by coach/economy class. Upon arrival at their destination, employees are expected to take the less expensive option between a taxi and an airport shuttle service to his/her hotel or meeting site. When circumstances dictate that a rental car is necessary and/or the most economical approach to the travel requirements, the least expensive car that will accomplish the job should be rented. The district shall not reimburse for any kind of rental car supplemental insurance.

WORK DAY AND DUTY DAY

Staff's normal work day is from 7:40am to 3:40pm. Teacher's need to be on campus at this time because students are given access to the campus at 7:30am. Those staff members who are on duty in the mornings shall be their duty station by 7:30am. The duty day ends at 3:30pm.