

Suitable Attire for Lawton Public Schools

Okay

Skirt



Walking Shorts



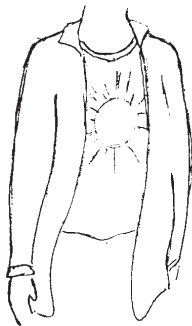
Slacks



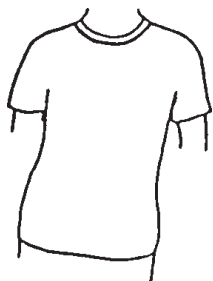
Polo Shirt



Not Sagging



Shirt over T-Shirt

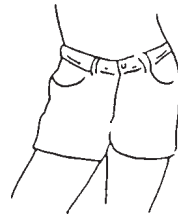


T-Shirt

Shirt Tails Tucked-In



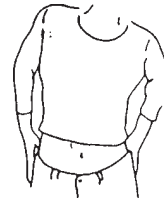
Not Okay



Short Shorts



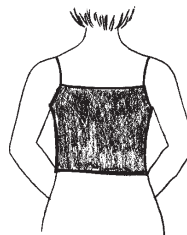
Mini Skirts



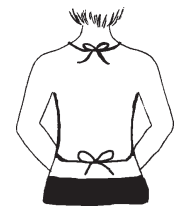
Crop Tops



Tank Tops



Spaghetti Straps



Backless Tops

Sagging pants



Shirt over Undershirt



Leggings



Muscle T-Shirt

Extra Long T-Shirts



Modified Dress Code

LPS Schools that follow a modified dress code:

- John Adams Elementary
- Hugh Bish Elementary
- Almor West Elementary
- Carriage Hills Elementary
- Central Middle School
- Cleveland Elementary
- Crosby Park Elementary
- Edison Elementary
- Eisenhower Elementary
- Freedom Elementary
- Lincoln Elementary
- Pat Henry Elementary
- Pioneer Park Elementary
- Ridgecrest Elementary
- Sullivan Village Elementary
- Tomlinson Middle School
- Washington Elementary
- Whittier Elementary
- Woodland Hills Elementary

Requirements

Boys:

- Knit polo style shirt with collar - (short or long sleeve) any solid color, no emblem.
- Slacks – black, navy blue or khaki
- Shorts – black, navy blue or khaki
- Sweatshirt, hoodie, cardigan or sweater – any solid color, no emblem.
- **NO DENIM or athletic material in shorts or pants will be permitted**
- **(Middle Schools ONLY - admittance of crew neck shirts in solid color)**

Girls:

- Knit polo style shirt with collar - (short or long sleeve) any solid color, no emblem.
- Slacks, capris, shorts – black, navy blue or khaki
- Skirts or jumpers – black, navy blue or khaki
- Sweatshirt, hoodie, cardigan or sweater – any solid color, no emblem.
- **NO DENIM or athletic material in shorts or pants will be permitted**
- **(Middle Schools ONLY - admittance of crew neck shirts in solid color)**