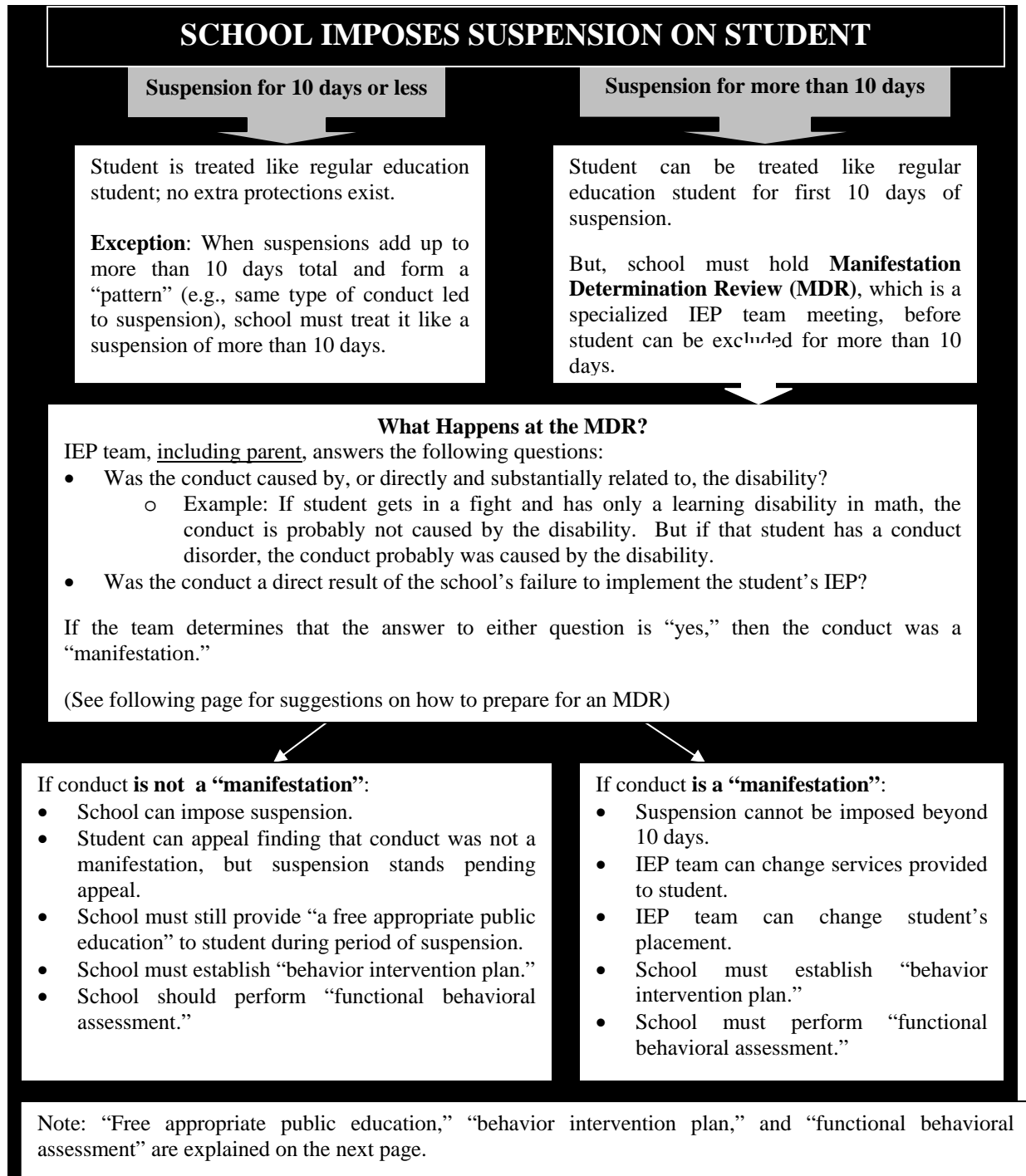


QUICK GUIDE: SCHOOL DISCIPLINE FOR SPECIAL EDUCATION STUDENTS

If a child has an Individualized Education Program (IEP) in place or has been referred for testing to determine if the student qualifies for special education services, the student has added protections from suspension or expulsion from school. The chart below summarizes those rights.



Note: Regardless of whether conduct was a “manifestation,” a student can be removed from school for 45 days if the student brought drugs or a weapon to school or caused serious bodily injury by their conduct. The student, however, must still be provided a “free appropriate public education” during the 45 days.