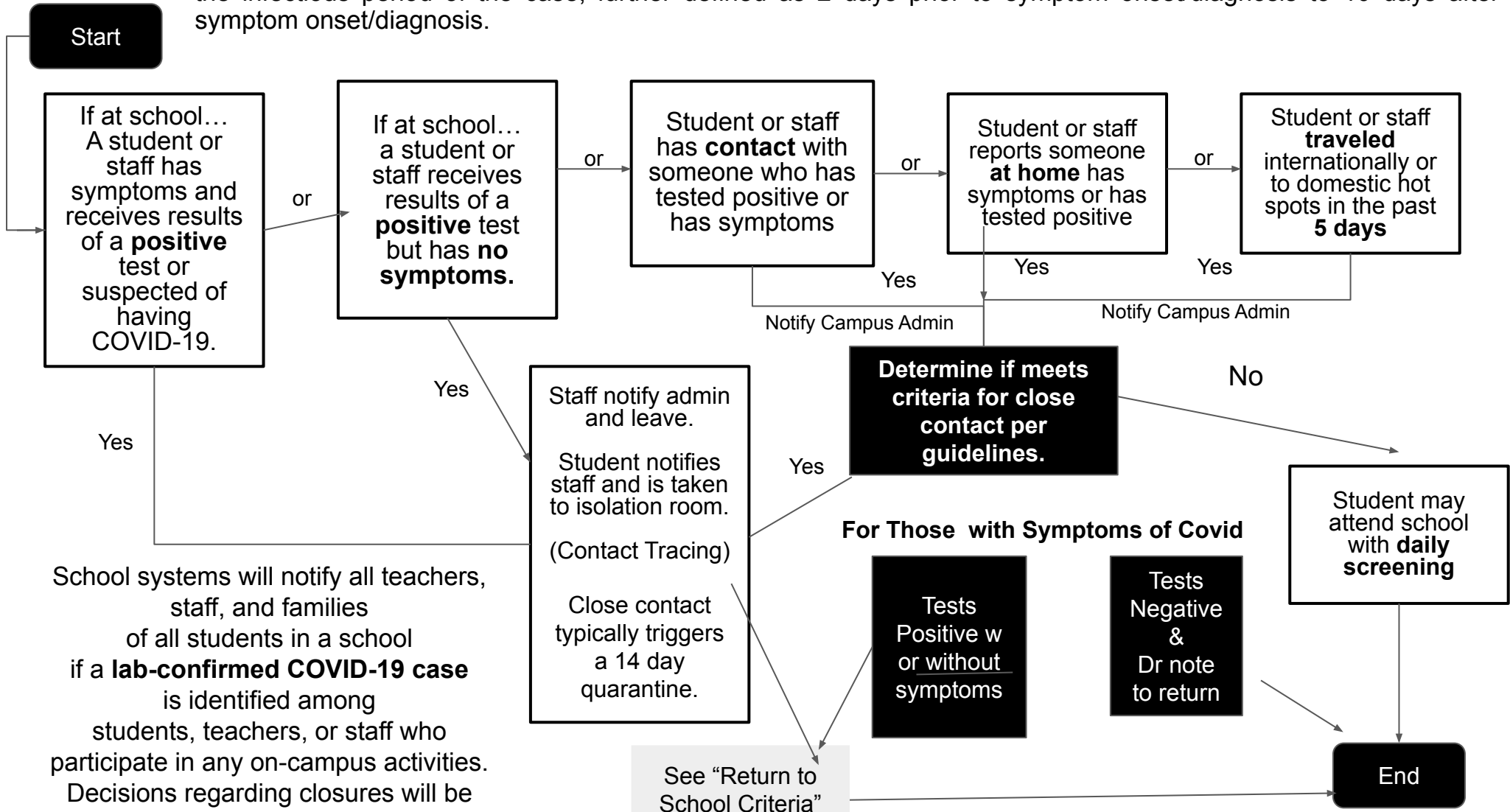


# Meridian ISD Flowchart for COVID-19

To be considered exposed to COVID-19, you would have had **close contact** with a person who is test confirmed to have Covid. Close contact is further defined as (a) being directly exposed to infectious secretions or (b) within 6 feet of a confirmed case during a cumulative period (15 minutes) within 24 hours. Factors such as masks and dividers may affect the determination of **close contact**. Either (a) or (b) defines close contact if it occurred during the infectious period of the case, further defined as 2 days prior to symptom onset/diagnosis to 10 days after symptom onset/diagnosis.



School systems will notify all teachers, staff, and families of all students in a school if a **lab-confirmed COVID-19 case** is identified among students, teachers, or staff who participate in any on-campus activities. Decisions regarding closures will be made dependent on close contact and cleaning of spaces.

## Return to Work/School Criteria after a positive Covid test

- At least 1 day (24 hours) have passed since recovery (no fever without the use of fever-reducing medications)
- The individual has improvement of symptoms
- At least 10 days have passed since symptoms first appeared

## Symptoms of COVID 19

People with these symptoms may have COVID 19

- o Have a temperature above 100.4
- o Loss of taste or smell
- o Shortness of breath
- o Headache
- o Chills
- o Diarrhea
- o Shaking or exaggerated shivering
- o Cough
- o Difficulty breathing
- o Fatigue
- o Congestion or runny nose
- o Sore throat
- o Nausea or vomiting
- o Significant muscle pain or ache

## Return to Work/School after symptoms but with a negative Covid test

If the individual has symptoms that could be Covid and wants to return prior to the criteria listed at left, the individual (a) must obtain a medical professional note clearing them for return based on an alternative diagnosis or (b) obtain a negative Covid test from an approved testing location as listed by TDEM.

Closest approved sites are Hico Clinic and Hamilton Family Practice.

## Important Information

- Schools must notify the local health authority in the case of a confirmed case
- Determine last date staff/student was physically present at school, pursue who was in “close contact” by definition.
- Determine areas that may have been exposed in last 48 hours, follow disinfecting protocols in those areas
- Determine additional closure response if needed
- School systems will notify all teachers, staff, and families of all students in a school if a **lab-confirmed COVID-19 case** is identified among students, teachers, or staff who participate in any on-campus activities