

KΛESTLE BOOS
a s s o c i a t e s , i n c


Summary of Project for Stage II Submission:

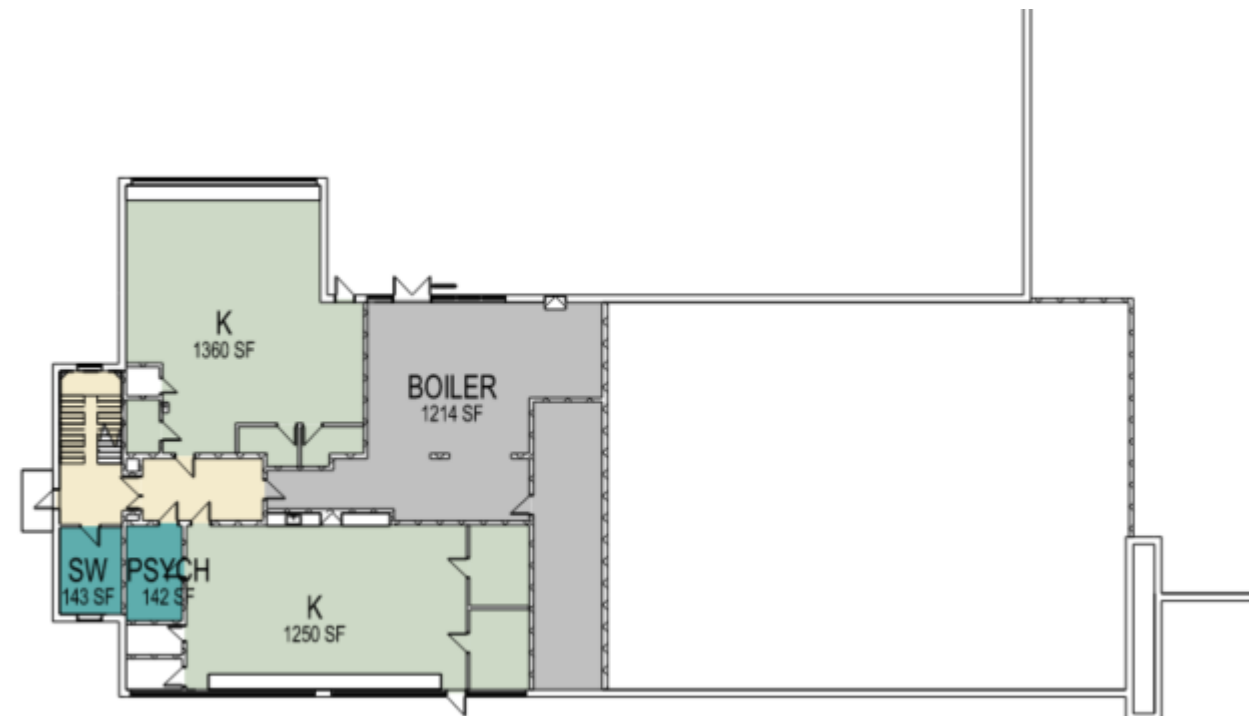
District-wide Grade 3-5 Upper Elementary School at Hampden Meadows Site

HIVE Projects - Minor educational upgrades for security, enrichment activities, and to create appropriate spaces for educational support (reading, MLL, math, speech, etc.)

Priority 1 & 2– Physical Deficiencies based on Professional Facility Assessment and aligned with criteria as determined by Jacobs Report – Required scope by RIDE



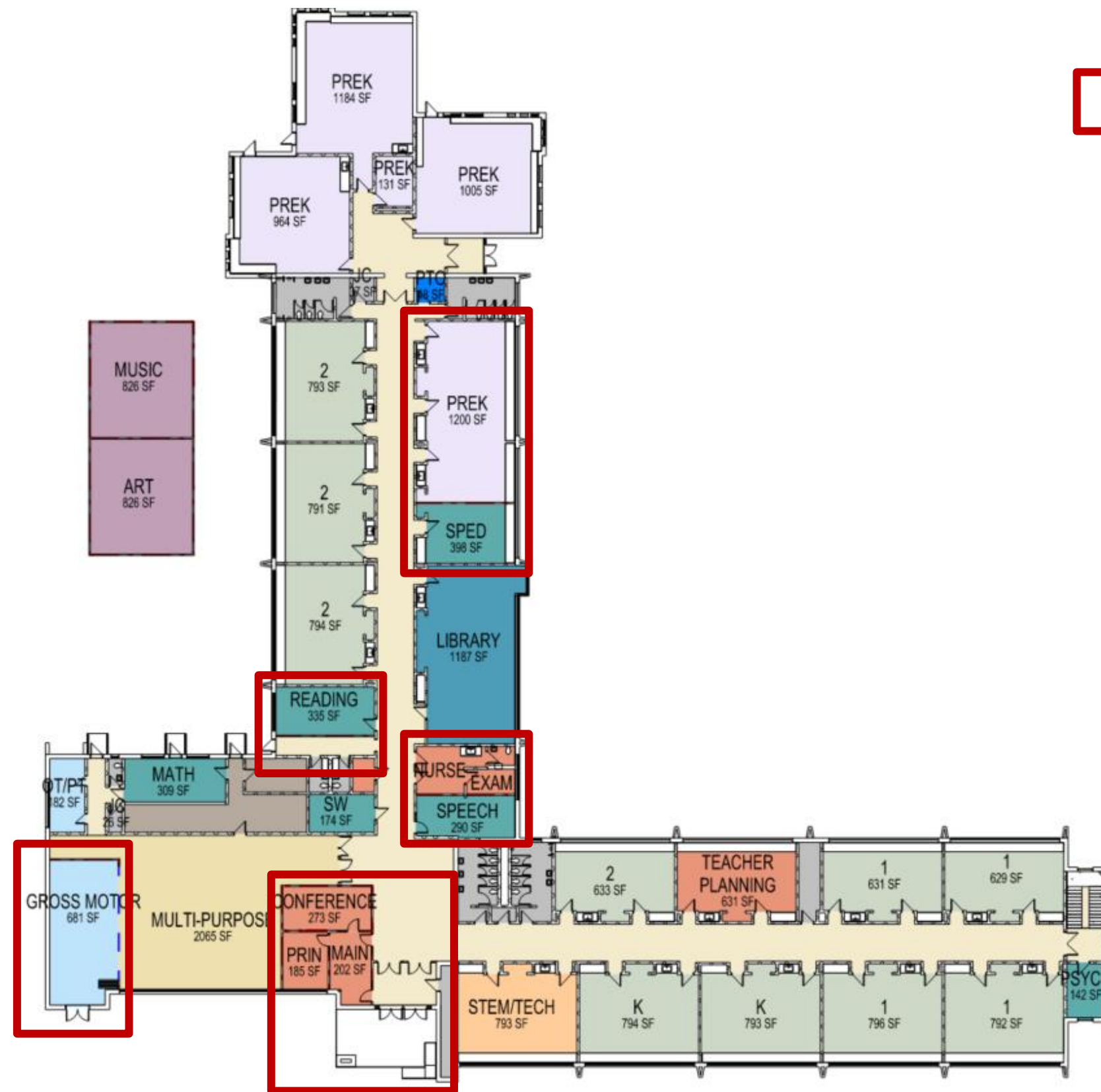
 Designates area of architectural changes. Additional spaces may require modification including but not limited to: millwork/casework and finishes to be educationally appropriate for changed use



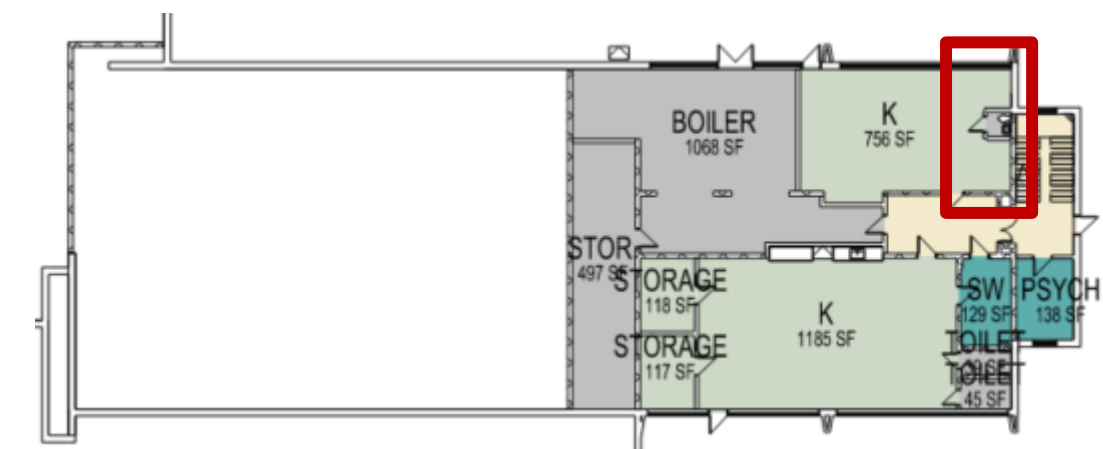
Program Organization shown is after Grade 3 moves to new Hampden Meadows School. Configuration is based on historical number of sections at each school.



Future Programmatic Arrangement- Nayatt



Designates area of architectural changes. Additional spaces may require modification including but not limited to: millwork/casework and finishes to be educationally appropriate for changed use



Program Organization shown is after Grade 3 moves to new Hampden Meadows School. Configuration is based on historical number of sections at each school.



Future Programmatic Arrangement- Primrose Hill



Designates area of architectural changes. Additional spaces may require modification including but not limited to: millwork/casework and finishes to be educationally appropriate for changed use



Program Organization shown is after Grade 3 moves to new Hampden Meadows School. Configuration is based on historical number of sections at each school.



Future Programmatic Arrangement- Sowams



COLOR LEGEND

	ADMINISTRATION
	BUILDING SUPPORT
	CIRCULATION
	CLASSROOM
	COMMUNITY
	KITCHEN
	MEDIA CENTER
	MEDICAL
	MUSIC/ ART
	PHYSICAL EDUCATION AND ATHLETICS
	SHARED/ COMMON
	SPECIAL EDUCATION
	STUDENT DINING

Main Level

Hampden Meadows Upper Elementary – New School



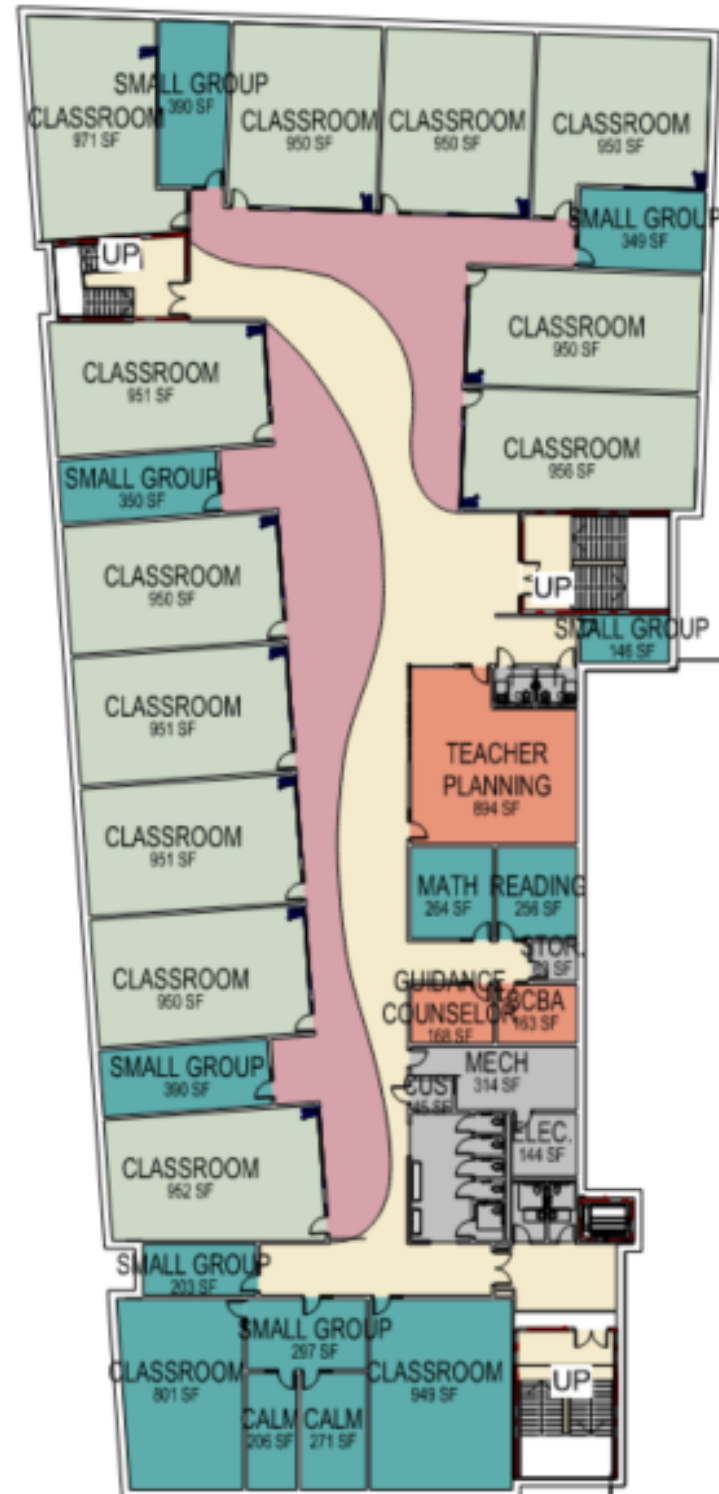


COLOR LEGEND

- ADMINISTRATION
- BUILDING SUPPORT
- CAREER TECH
- CIRCULATION
- CLASSROOM
- MUSIC/ ART
- PHYSICAL EDUCATION AND ATHLETICS
- SHARED/ COMMON
- SPECIAL EDUCATION
- STUDENT DINING



Hampden Meadows Upper Elementary – New School



COLOR LEGEND

- ADMINISTRATION
- BUILDING SUPPORT
- CIRCULATION
- CLASSROOM
- SHARED/ COMMON
- SPECIAL EDUCATION



Hampden Meadows Upper Elementary – New School

Schedule

Next week: Site Work Share for Hampden Meadows including enabling scope

Plans / Specs to estimator 12/25/22

Draft Report 01/15/23

Approvals from BSBC/SC/TC - 01/15/23 – 2/14/23

Submission to RIDE for Approval 2/15/23

RIDE Review – after 2/15/23

CESE/Legislative Approval June 2023

Referendum for Approval to issue Bond – After June 2023 Approval



KΛESTLE BOOS
a s s o c i a t e s , i n c