

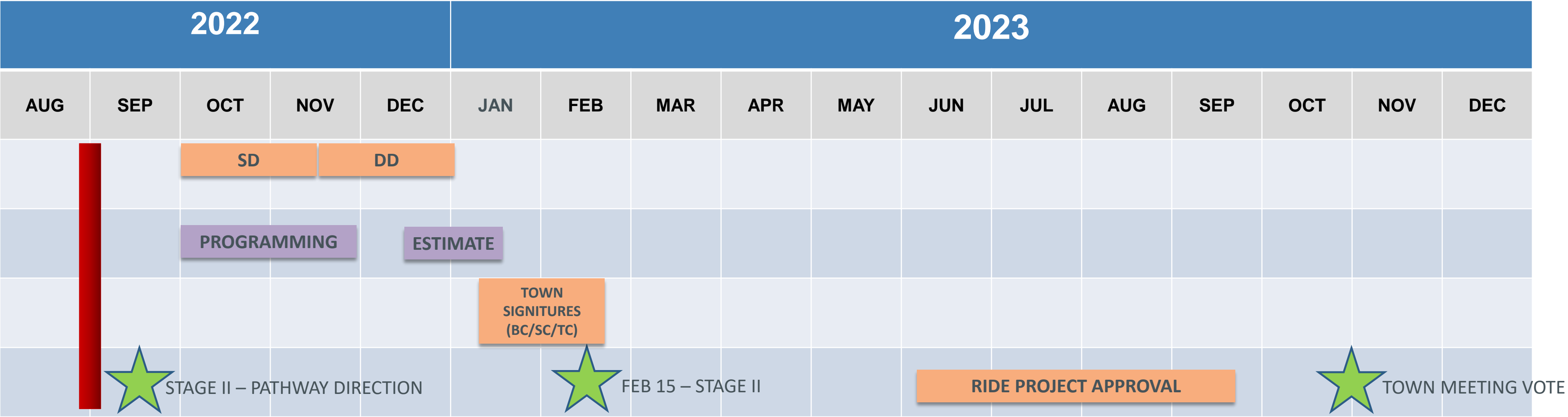
---

# BARRINGTON

## TOWN COUNCIL

### SEPTEMBER 12, 2022





- End of September: Stage II Submission Pathway Decision Deadline
- September / October: Programming w/ Educational Leadership Complete
- November: Advertise for OPM & Commissioning Agent services.  
All Stage II Schematic Design Documents Complete
- December: All Stage II Projects submitted to Estimator
- January: Budget Estimate Complete  
Stage 2 DRAFT Submission Complete for Town Approvals
- February: Stage 2 Submission to RIDE (2/15/23)



# PROJECT SCHEDULE

# Project Data:

## Why now?

- Stage 2 projects submitted to RIDE (at latest) by February 2023 will be eligible for 17.5% additional reimbursement above and beyond base rate of 35%
- Barrington takes next step after completing the Middle School project
- Immediate space needs at Primrose Hill (new modular/temp classrooms added for SY 22/23)

## Why are the Elementary Schools being addressed first?

- Severe overcrowding, inadequate teaching space, lack of dedicated space for staff, special education, enrichment programs, inefficient operational model, not preferred grade configuration, increasing enrollment, antiquated facility design that doesn't work for modern teaching and learning models, and facilities beyond their usable lifetime.

## What are the RIDE parameters?

- RIDE requires districts to complete 50% of the scope of their Stage 2. These values are captured on each sheet as indicated by "Minimum required financial commitment"
- Bonds for work can be taken as needed to minimize impact to communities/taxpayers (example: bond for each project as it begins rather than one large bond)
- Work must align with RIDE Basic Educational Program and other requirements to be eligible for reimbursement
- In all scenarios, Priority 1 + 2 work MUST be addressed at high school and any projects not being addressed.
- In each scenario, the first construction project must take place at Primrose Hill School site because of lack of alternate swing space



# Project Data:

## **What are the Site Restrictions?**

- Size of site must be considered to support schools with appropriate site amenities, drop-off/pick-up areas, parking, outdoor play space
- Creating 3 neighborhood schools (instead of existing 4)
- Wetlands challenges on most sites
- Community desire to create more play and athletic fields within town

## **What are facility challenges?**

- Swing space: In each scenario, the first construction project must take place at Primrose Hill School site because of lack of alternate swing space
- PreK construction work must begin before the existing Primrose Hill school can be demolished.



---

## NEXT STEPS

# PATHWAY FORWARD – OPTION 2B:

## **Grades 1-5 School Model w/ Early Childhood Center :**

- Construct new 1-5 School @ Primrose Hill Site
- Existing Primrose Hill Site is used for swing space
- Construct new 1-5 School @ Hampden Meadows
- Demolish existing Primrose Hill School
- Fully Renovate and construct additions @ Nayatt or Sowams School for a PK-K School (10K / 6PK Rooms)
- Sowans or Nayatt School becomes vacant
- Fully Renovate and construct additions @ the High School



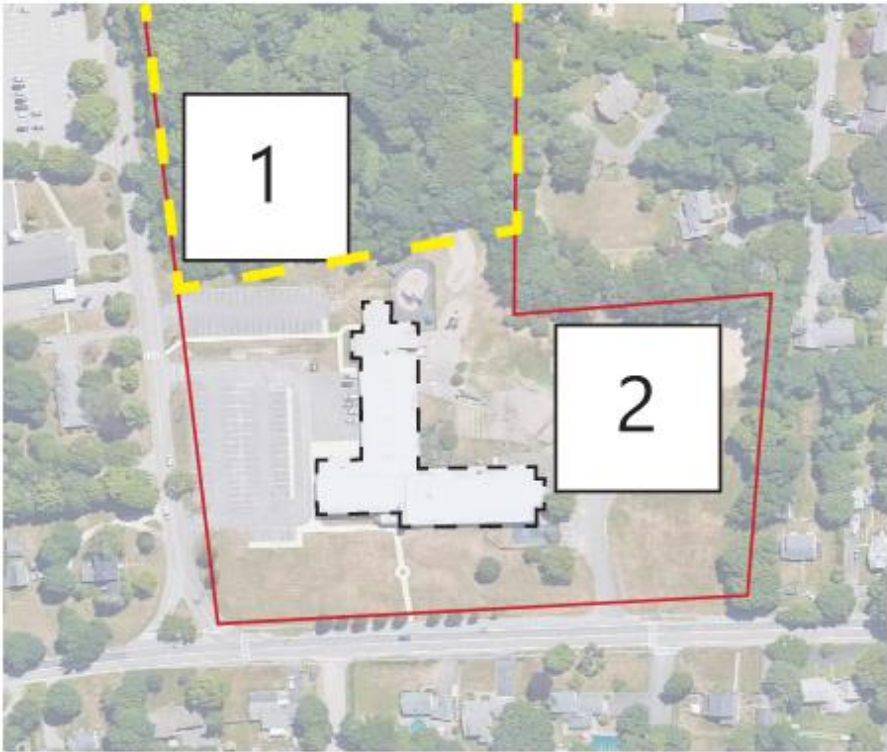
---

## NEXT STEPS

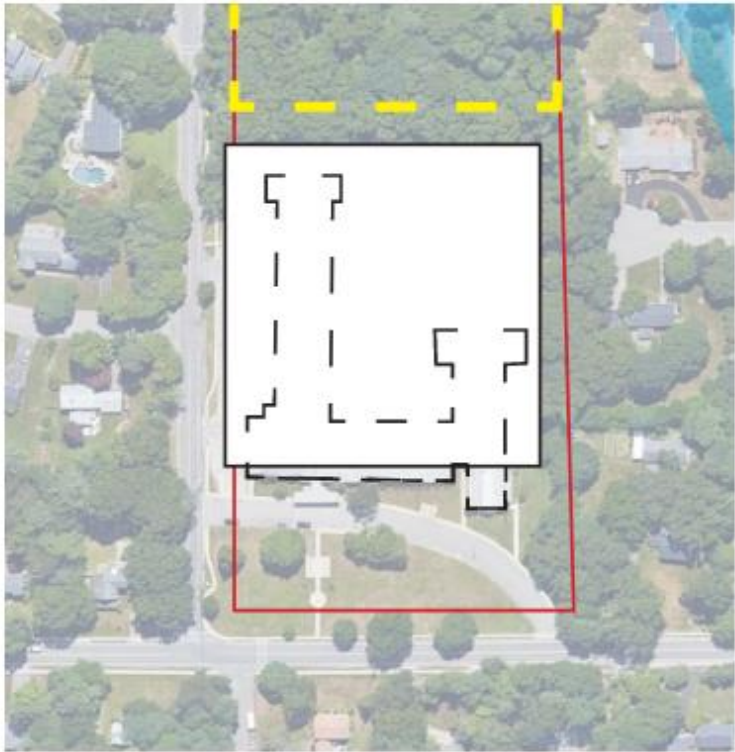


# PATH FORWARD- EXAMPLE 2B

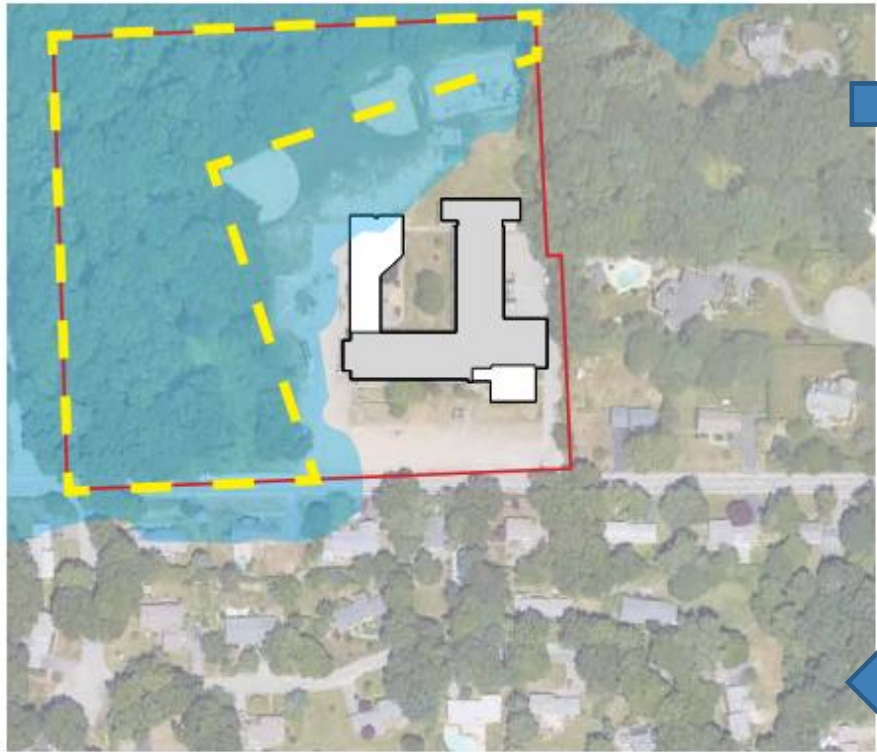
1-5 MODEL WITH COMBINED EARLY LEARNING CENTER (ELC) - 2 NEW



**PRIMROSE HILL**  
NEW CONSTRUCTION 1-5  
625 STUDENTS



**HAMPDEN MEADOWS**  
NEW 1-5  
625 STUDENTS



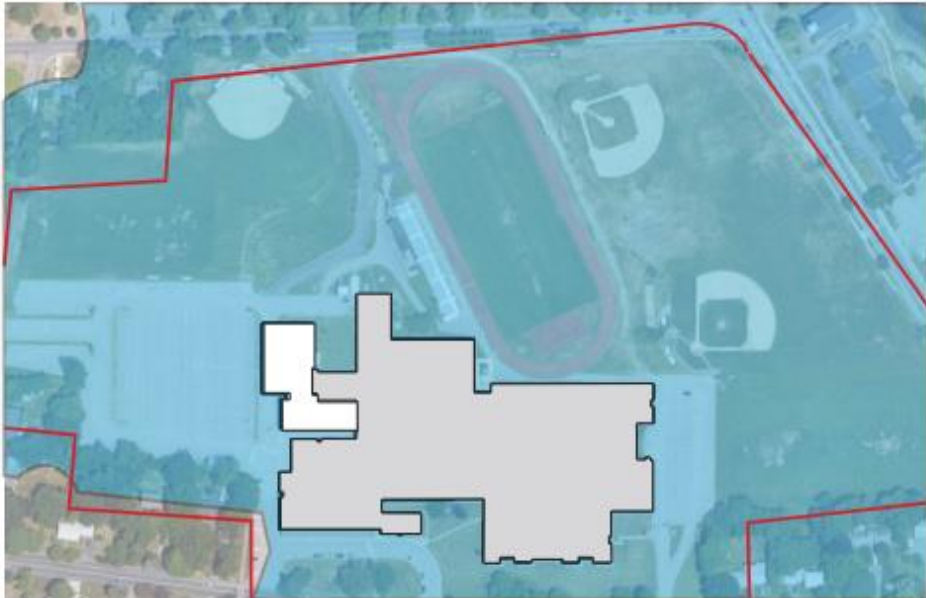
**NAYATT**  
ADD/RENO PK-K OR NEW CONSTRUCTION  
6 SECTIONS PK, 10 SECTIONS K



**SOWAMS**



**BARRINGTON MIDDLE SCHOOL**  
NO CHANGES

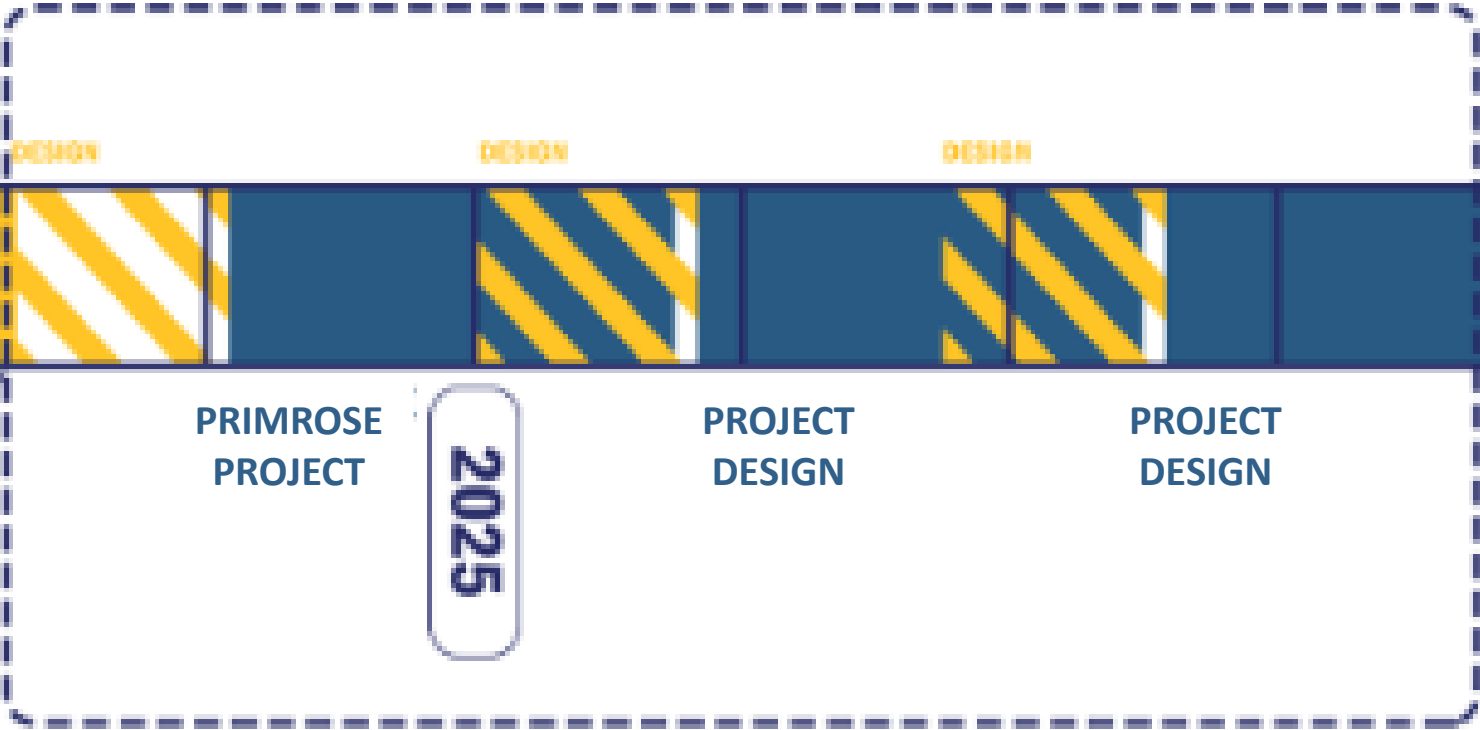


**BARRINGTON HIGH SCHOOL**  
ADD/RENO OR NEW CONSTRUCTION



SUBMIT  
STAGE 2  
FEB 2023

STAGE 2 SCOPE SCHEDULE



SPRING 2023  
SPECIAL ELECTION

PRIMROSE  
PROJECT

2025

PROJECT  
DESIGN

PROJECT  
DESIGN

2030

PROJECT  
DESIGN

2035



**KΛESTLE BOOS**  
a s s o c i a t e s , i n c