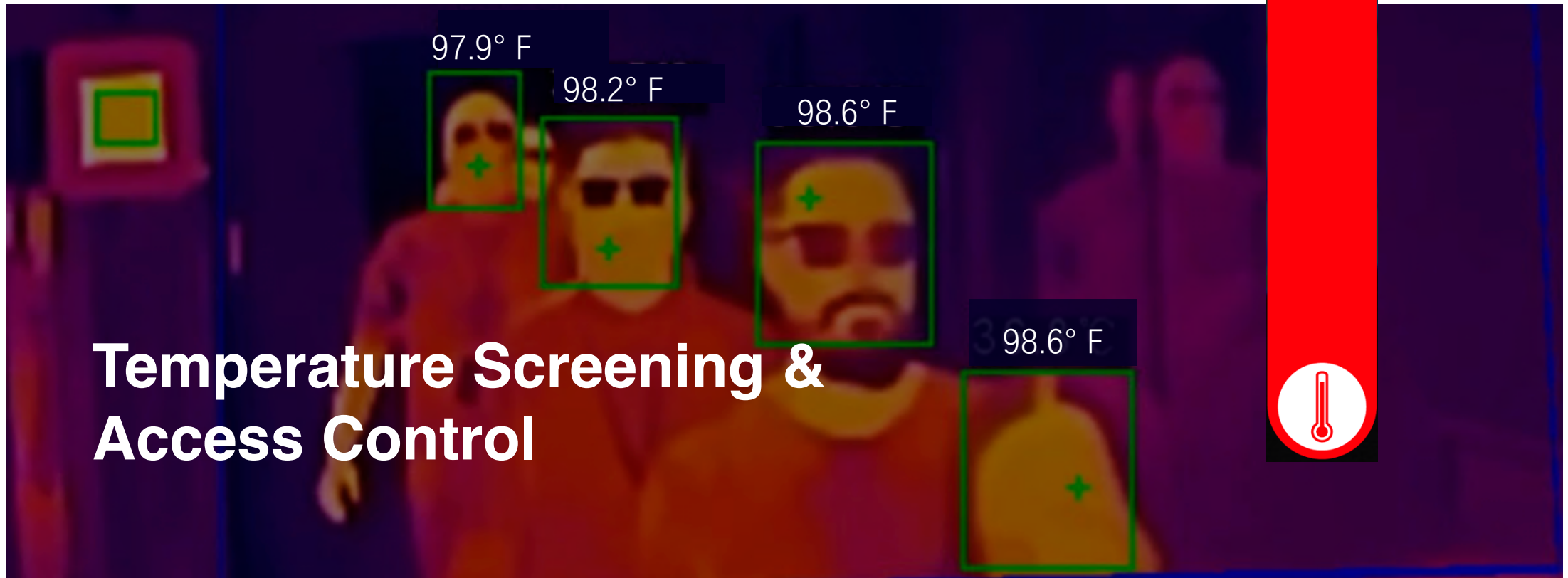


# Temperature Screening & Access Control



# A Complete Solution



Thermal imaging cameras are the most effective, accurate and efficient means of rapidly measuring and detecting elevated temperatures. Apex Digital technology is the most effective solution available for slowing the spread of COVID-19 by limiting exposure to infection and protecting customers and service providers alike.

Our solutions are particularly effective in high-traffic environments like schools and nursing homes) where fast, reliable daily screening is needed. Our systems also ensure compliance with CDC guidelines and local requirements for re-opening.



## Challenge



### Risk of Close Contact

- Increased risk of infection



### High Cost, Low Efficiency

- Costly investment in labor
- Inefficient coverage of large groups
- Lack of immediacy of results

## Solution



### Safety

- Thermal cameras detect and measure from 3-12 feet away, eliminating unnecessary physical contact



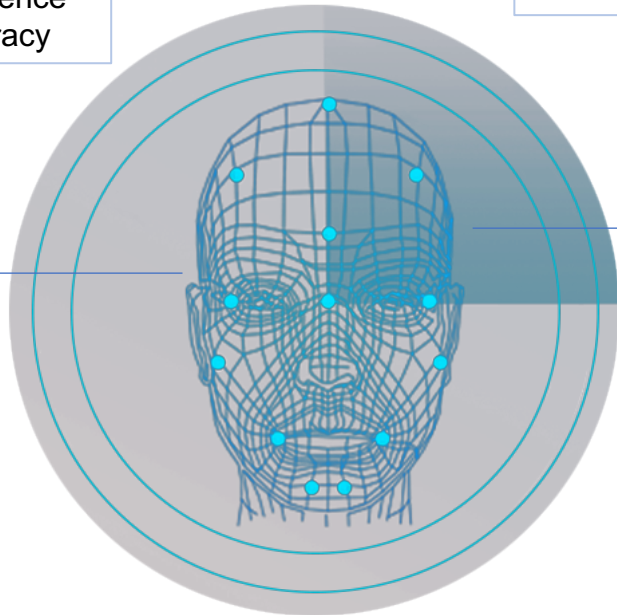
### High Efficiency, Low Cost

- Highly accurate ( $\pm 0.54^\circ$  F) results in 1 second
- Simultaneous reading of as many as 30 people at a time

# Key Features

## Get Accurate Temperature Readings and Facial Recognition in milliseconds

Artificial Intelligence improves accuracy



Real-time data analysis & report via remote access



Quick Measurement



Contact Free



Facial Recognition  
Library >50,000 records



Accurate to  $\pm 0.54^\circ$



Data Analysis & Reporting



Real-time Alerts



Mask Reminders



Simultaneous Temperature Detection  
Up to 30 people



Remote Access



## Bullet Camera

- Up to 30-person simultaneous contact-free temperature screening
- Facial recognition
- Automatic traffic counting for occupant density control (optional)
- Mask detection & reminders
- Instant alert with video and audio
- On-cloud device management and visits report platform
- Local video storage (on NVR)



## Multiple Person Kiosk

- Up to 20-person simultaneous contact-free temperature screening
- Facial recognition
- Automatic traffic counting for occupant density control (optional)
- Mask detection & reminders
- Instant alert with video and audio
- On-cloud device management and visits report platform
- Work as attendance recorder



## Single Person Kiosk

- 30 person/min contact-free screening
- Mask detection & reminders
- Facial recognition
- Visualized temperature screening
- Instant alert with video and audio
- On-cloud device management and visits report platform
- Works as attendance recorder with RFID



## Handheld

- 50 person/min. contact-free screening
- Readings from 6 feet away maintaining social distancing
- Automatic screenshots w built-in optical camera
- Supports real-time audio alarm
- 4-5 hours of continuous operation



# Application Scenarios

Nursing Homes



Retail



Casinos



Convenience Stores



Schools



Restaurants



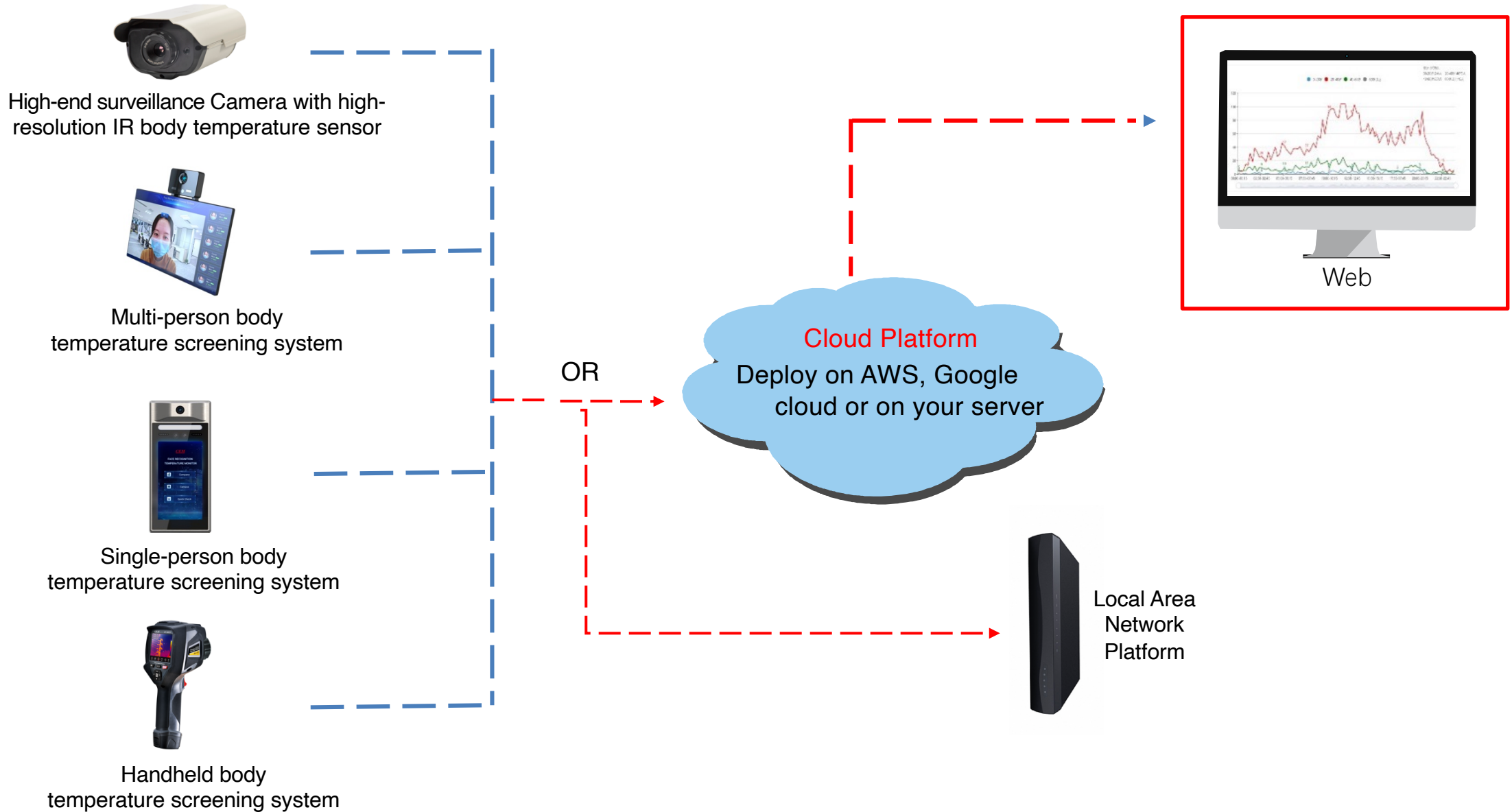
Offices



Airports



# Device Management



Apex Digital's screening solutions are currently being used worldwide in a variety of settings to manage COVID-19 screening and for other reporting requirements. Here are some examples of a few successful applications:

## **NURSING HOMES**

A nursing home corporation operating in 15 states relies on Apex Digital to help to ensure the safety of nearly 50,000 employees and residents. The system also checks daily attendance and maintains staff attendance records.

## **SCHOOLS**

A school district with 43,000 students, teachers and staff has deployed both our temperature screening and bio detection functions to strengthen campus safety and security. In addition to COVID-19 tracking, the district uses Apex Digital's solutions to detect intruders, alert authorities to weapons and to screen potential employees against known criminal registries. This bio detection functionality is optional and can be turned off.

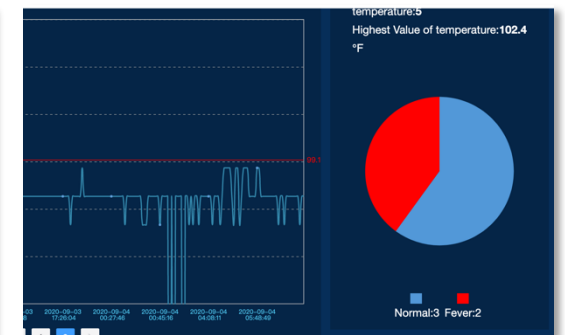
Additionally, Apex Digital solutions are being used by the following national brands.



## State of the Art Service

In addition to the most accurate and effective technology available, Apex Digital also provides:

- Ongoing technical support. Especially useful to organizations that do not have a dedicated IT team
- Real-time alert service eliminates the need for manned surveillance
- Customized reporting for COVID-19 regulatory compliance and managerial support and recording keeping
- Data management solutions can be synchronized with other tools and technologies already in use for consolidated statistics and reporting





---

**Thank You**