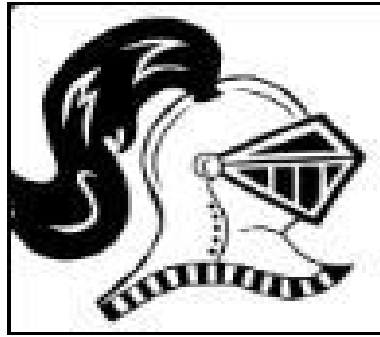


# **Nippersink Middle School**



## **Hybrid Plan**

Our Guide to Reopening School  
Based on Guidance From ISBE, IDPH, and CDC

# Table of Contents

	Page
<b>Introduction</b>	<b>3</b>
<b>Back to School Schedule</b>	<b>3</b>
<b>6th Grade Start Date</b>	<b>3</b>
<b>NMS Hybrid Learning Plan</b>	<b>4</b>
In-Person/Remote Learning Schedule	4
Hybrid Bell Schedule	5
Science and Social Studies Schedule	6
Remote Learning Option	7
<b>Health and Wellness</b>	<b>8</b>
Social and Physical Distancing	8
PPE and Face Coverings	8
Hygiene	9
Training	9
Health Screenings	9
Visitors	10
Technology	11
Grades 6-8 Classroom Guidance	11
Arrival and Dismissal Procedures	12
Hallways, Main Offices, and Common Areas	12
Cafeteria	12
Restrooms	13
Shared Objects	13
When a Student or Staff member Becomes Sick	13
School Closure Plan	15
<b>Instruction</b>	<b>16</b>
Safety Education for Students	16
Medically Fragile or High Risk Students	16
Special Services	17
Social and Emotional Learning(SEL)	17
Band and Choir	17
PE, Gymnasiums, & Locker Rooms	17
PE Daily Schedule	18
Extracurriculars	18
Athletics	18
Distance Learning Systems	18
<b>Transportation</b>	<b>19</b>
<b>Operations</b>	<b>20</b>
Facilities - Enhanced Cleaning Procedures	20
Health Offices	21
Recommendations for Families	22

## Introduction

It is our goal to educate all students during the COVID-19 pandemic in a manner that allows for as much in-person learning as possible. Nippersink Middle School continues to follow all guidelines set forth by the IDPH, ISBE, and CDC in order to ensure our students and staff have a safe and healthy environment to return to this fall. This plan outlines all the safety measures taking place in addition to the new protocols, procedures, and enhanced cleaning plans designed to keep our students and staff safe.

The COVID-19 pandemic is a very fluid situation and NMS is prepared to change our delivery of instruction at any point. This reopening guide will outline the specifics of what to expect during a hybrid learning model.

If you have direct questions regarding a policy or any other concerns, please contact your student's principal. Your student's principal will be able to give you the latest information and rationale for specific policies or decisions that have been made.

### **Back to School Schedule :**

#### **6th grade ONLY start date**

#### **October 19 - October 23, 2020**

- October 19- 6th grade A-L in-person  
6th grade M-Z no remote learning
- October 20- 6th grade M-Z  
6th grade A-L no remote learning
- October 21- Remote Learning for all students
- October 22- 6th grade A-L in-person  
6th grade M-Z no remote learning
- October 23- 6th grade M-Z in-person  
6th grade A-L no remote learning

**\*\*\*October 19 - 23 7th and 8th grade students to remain in the current full remote learning schedule**

## **6, 7, & 8th Grade Hybrid Learning Plan**

**Starting October 26 - ALL 6-8th grade students will follow the in-person/remote learning schedule and bell schedule listed below.**

### **Hybrid Schedule**

The hybrid schedule allows for students' social/emotional and academic deficiencies to be addressed when transitioning from remote learning to in-person learning. A hybrid instructional delivery model will allow students the time to reacclimate to school, learn new safety procedures, and reconnect with teachers and friends in a smaller, a less crowded environment. We believe that having a hybrid model that includes both in-person and remote instruction supports a smoother transition if schools are required to abruptly close and return to a remote learning model. The following table outlines the daily schedules for Nippersink Middle School.

### **In-Person/Remote Learning Schedule**

<b>Mondays</b>	<b>Tuesdays</b>	<b>Wednesdays</b>	<b>Thursdays</b>	<b>Fridays</b>
A - L in-person learning	A - L remote learning	Everyone Remote Learning	A - L in-person learning	A - L remote learning
M - Z remote Learning	M - Z in-person learning		M - Z remote Learning	M - Z in-person learning

### **What will my remote learning look like:**

- Students will follow the daily schedule and be required to participate just as they have during full remote learning.
- Synchronous instruction will be given to both the in-person and remote learning students every day of the week.
- Wednesdays will be full remote learning for all students although it will be a lightened academic load for the day

## Hybrid Bell Schedule

<b>6<sup>TH</sup> GRADE</b>	Period 1 and 2 7:45 – 8:50	Period 3 and 4 8:55 – 10:00		Period 5 10:05 – 11:05	Period 6 and 7 11:10 – 12:15		Period 8 12:20 – 12:50	Period 9 12:55 – 1:25
	Academic Block	Academic Block		Band/Choir/ Encore Lunch	Academic Block		PE/Exploratories	
<b>7<sup>TH</sup> GRADE</b>	Period 1 and 2 7:45 – 8:50	Period 3 8:55 – 9:25	Period 4 9:30 –10:00	Period 5 10:05 – 10:35	Period 6 10:40 – 11:40	Period 7 11:45 – 12:15	Period 8 and 9 12:20 –1:25	
	Academic Block	PE/Exploratories		Academic Block	Band/ Choir/ Encore Lunch	Academic Block	Academic Block	
<b>8<sup>TH</sup> GRADE</b>	Period 1 and 2 7:45 – 8:50	Period 3 and 4 8:55 – 10:00		Period 5 10:05 – 10:35	Period 6 10:40 – 11:10	Period 7 11:15 – 12:15	Period 8 and 9 12:20 –1:25	
	Academic Block	Academic Block		PE/Exploratories		Band/ Choir/ Encore Lunch	Academic Block	

### **Change in Science and Social Studies Scheduling**

Previously, students have been utilizing an A/B schedule for Science and Social Studies. In an effort to reduce screen time and to maintain a more consistent schedule and rigorous delivery of content, students will be assigned one of those content areas per quarter. This schedule will rotate for the 3rd quarter.

#### **6th grade:**

Students who have **Social Studies** on their schedule for periods 1, 3, or 7 will have the following schedule:

2nd Quarter- Social Studies Class  
                  No Science Class  
3rd Quarter- Science Class  
                  No Social Studies Class  
4th Quarter- TBD

Students who have **Science** on their schedule for periods 1, 3, or 7 will have the following schedule:

2nd Quarter- Science Class  
                  No Social Studies Class  
3rd Quarter- Social Studies Class  
                  No Science Class  
4th Quarter- TBD

#### **7th grade:**

Students who have **Social Studies** on their schedule for periods 1, 5, or 8 will have the following schedule:

2nd Quarter- Social Studies Class  
                  No Science Class  
3rd Quarter- Science Class  
                  No Social Studies Class  
4th Quarter- TBD

Students who have **Science** on their schedule for periods 1, 5, or 8 will have the following schedule:

2nd Quarter- Science Class  
                  No Social Studies Class  
3rd Quarter- Social Studies Class  
                  No Science Class  
4th Quarter- TBD

### **8th grade:**

Students who have **Social Studies** on their schedule for periods 1, 3, or 9 will have the following schedule:

2nd Quarter- Social Studies Class  
                    No Science Class  
3rd Quarter- Science Class  
                    No Social Studies Class  
4th Quarter- TBD

Students who have **Science** on their schedule for periods 1, 3, or 9 will have the following schedule:

2nd Quarter- Science Class  
                    No Social Studies Class  
3rd Quarter- Social Studies Class  
                    No Science Class  
4th Quarter- TBD

### **PE Daily Schedule**

- Students who are participating in in-person instruction during the hybrid will be required to participate in remote learning activities on Wednesdays only, otherwise PE instruction will only be occurring during in-person days.
- Students who are participating in full remote instruction will be required to participate in the following PE remote instruction Schedule:
  - Every Tuesday- 2:00 - 2:30
  - Wednesdays- During their regularly scheduled PE class

### **Full Remote Learning Option**

Parents/Guardians not wanting to send their student(s) back to full in person learning, may choose to opt into full remote learning. NMS will communicate with families that choose the full remote learning option as to what their child's schedule will be. Students who are participating in full remote instruction will be required to participate in PE remote instruction two times per week as identified by the teacher.

***\*\*In-person learning can only take place as long as we are still in Phase 4 of the Governor's Reopen Illinois Plan, we have not seen COVID-19 cases in our schools, and it is deemed that full in-person learning can be done in a safe manner.***

## Health and Wellness

### *Social & Physical Distancing*

Nippersink Middle School has developed procedures to ensure six feet of physical distance from others. This expectation pertains to students and staff members in all areas and settings to the greatest extent possible. Visual reminders will be posted throughout school building and visuals will be designated (signs, tape, etc.) as indicators of safe distancing in areas where students congregate or line up (e.g., arrival and departure, lunchroom lines, hallways, libraries, cafeterias). We will stagger bus loading and unloading, hall passing periods, mealtimes, bathroom breaks, etc. to ensure student and staff safety. Staff and students should abstain from physical contact, including, but not limited to, handshakes, high fives, etc. Staff break areas will be arranged to facilitate social distancing.

### *PPE and Face Coverings*

Nippersink Middle School understands physical distancing will not be possible for all circumstances. There is significant evidence that face coverings provide protection and decrease the spread of COVID-19. **In accordance with IDPH and ISBE mandates, ALL individuals in school buildings must wear face coverings at all times, unless they are younger than two years of age, have trouble breathing, or are unconscious, incapacitated, or otherwise unable to remove the cover without assistance.**

- If a medical reason prevents a student or staff member from wearing a face covering, the proper medical documentation from a licensed physician will be required. Face shields will be required for those medically exempt from wearing face coverings.
- Face coverings must be worn at all times in school buildings even when social distancing is maintained. Face coverings do not need to be worn outside if social distance is maintained.
- Students are required to provide their own face covering.
- NMS will maintain a supply of disposable face coverings in the event that a staff member, student, or visitor does not have one for use. After use, the front of the face covering is considered contaminated and should not be touched during removal or replacement. Hand hygiene should be performed immediately after removing and after replacing the face covering.
- Gloves or other PPE must be used as needed when assisting students requiring close contact.
- Employees and students are encouraged to use their own face covering.
- Parents/Guardians who are unable or do not wish to wear face coverings while visiting school will be invited to attend conferences and meetings regarding their child's education via video conference or phone.
- For students in certain special programs such as Life Skills and Structured Support, every attempt should be made to instruct students in the importance of wearing a face covering and staff are expected to actively and in a supportive manner coach each student to do so; however, it is a distinct possibility that a student may not be successful in keeping a face covering on at all times.



- Teachers and Principals will seek the assistance and cooperation of parents and will work with students who refuse to wear face coverings without a valid medical excuse to support them in compliance, however the wearing of face coverings is mandated by state order. Students who continue to refuse to wear face coverings without medical excuse may be subjected to disciplinary action.

## ***Hygiene***

Frequent hand washing and hand sanitizing are key to help prevent the spread of COVID-19. Staff members must clean hands as often as possible with soap and water for at least 20 seconds. If soap and water are not available, an alcohol-based hand sanitizer that contains at least 60% alcohol may be used. Staff must avoid touching their mouth, eyes, or nose as much as possible. Staff and students must use hand sanitizer upon entering the classroom each time. Hand sanitizer will be placed in common areas throughout the building. The building will place signage reminding everyone of the need for proper hand hygiene in the appropriate areas. If assisting a student requires close contact, hand washing, or sanitizing must be done before and after contact with the student. It is recommended that hand hygiene is performed upon arrival to and departure from school; after blowing one's nose, coughing, or sneezing; following restroom use; before food preparation, or before and after eating; before/after routine care for another person, such as a child; after contact with a person who is sick; upon return from physical education; and following glove removal. NMS will post handwashing posters in the restrooms, hallways, and all common areas.

## ***Training***

Each staff member will be required to complete safety training related to physical distancing, face covering, and hand hygiene procedures. NMS will provide training to staff that is specific to its unique circumstances. Hand hygiene and physical distancing will be included in the curriculum to help educate students the importance of proper hand hygiene and personal safety. Employees will also be trained on the proper way to disinfect their individual workstations as needed.

## ***Health Screenings***

Only students and staff who are healthy should report for in-person learning. It is important to note, students and staff will not be penalized for missing school and are encouraged to stay home when not feeling well.

Students and staff are required to have their temperature taken daily before they can enter the school building. A staff member or student displaying any of the COVID-19 symptoms listed below or if they have a fever of 100.4 or higher will be sent home. Parents will need to self-certify their student(s) prior to getting on the bus or arriving at school using the Nippersink District 2 provided self-certification form. (please see an example of the form and more details in the transportation section on page 20 in this document. This self certification would allow the staff member or student to bypass the daily health screening when entering the school.

Students and staff with any of the following symptoms of COVID-19 must remain home:

- Cough
- Fatigue
- Fever and/or chills
- Headache
- Known close contact with a person who has been diagnosed with COVID-19
- Measured temperature of 100.4 degrees Fahrenheit or greater
- Nausea or vomiting
- New loss of taste or smell
- Shortness of breath or difficulty breathing
- Sore throat

Any student or staff member who begins to exhibit a high fever associated with COVID-19 like symptoms must report to the nurse's office or school office. Students will be provided a face covering and will remain in the supervised quarantine area until a parent or guardian picks up the student, or alternative transportation home is arranged. Students and staff who are sick must self-monitor and return to school according to the IDPH guidelines. A doctor's note may be required for staff returning to work. Staff who has had contact with someone who is positive for COVID-19 must notify the building principal or supervisor immediately. Students who have had contact with someone who is positive for COVID-19 must follow the IDPH guidelines for self-monitoring and self-quarantine.

### **Visitors**

Visitors must be restricted to authorized personnel only. Visitors to the building must always wear an appropriate and approved face covering and report directly to the main office for a wellness screening, which includes a temperature check. Visitors will remain in the main office or other designated area for the duration of the visit. Students or staff will be asked to meet the visitor to conduct business as needed. Visitors will not have access to the building. This will be in addition to the normal sign in procedures. At this time, no outside groups will be allowed to utilize our facility at any time.

All visitors entering the building must be asked the following questions:

1. Has the individual washed their hands or used alcohol-based hand sanitizer on entry?
  - a. Yes - proceed to question #2
  - b. No – please ask them to do so and then proceed to question #2
  
2. Ask the individual if they have any of the following symptoms
  - a. Cough
  - b. Shortness of breath
  - c. **OR** at least TWO of these symptoms
    - i. Fever
    - ii. Shaking with chills
    - iii. Headache
    - iv. Loss of taste or smell

- v. Muscle Pain
- vi. Sore Throat
- vii. Vomiting
- viii. Diarrhea

**If YES, restrict them from entering the building**

If NO to all, continue to step #3

3. Check temperature, looking for a fever of 100.4 or higher

**If YES, restrict them from entering the building**

If NO to all, continue to step #4

4. Allow entry to the building and remind the individual to:

- a. Wash their hands or use hand sanitizer throughout their time in the building
- b. DO NOT shake hands with, touch or hug individuals during their visit

### ***Technology***

- Every NMS student has been issued a district owned Chromebook
- **Students will need to bring their fully charged Chromebook with them to school every day**
- Students will be responsible for adhering to the technology acceptable use policy agreed to during online registration both at school and at home
- Shared technology devices will be disinfected after each use
- Chromebook rentals will be available during 1st hour but a teacher must call the library prior to sending a student to control the number of students in the library at any given time

### ***Grades 6–8 Classroom Guidance***

- Arrange seating six feet apart, if possible, and face the same direction as feasible. It is recommended teachers provide assigned seating for students
- Clearly mark common areas and tables to show where to sit, stand or line-up for six feet spacing, if possible
- Stagger transition times (passing periods) and review schedules
- Encourage hand washing throughout the day.
- Schedule/coordinate activities by grade level to minimize student mixing
- Sanitize hands whenever anyone enters the classroom
- Do not share school supplies between students or staff
- Clean classrooms daily
- Require face coverings for staff and students
- Individual bathroom breaks for students during class periods
- Student and teachers cleaning desks with disinfecting wipes at the end of each class period of both table and desk, teacher to disinfect any other surface in the classroom as needed

### ***Arrival and Dismissal Procedures***

- Students being dropped off or picked up should use the entrance in the back of the building
- Students may not arrive on school grounds earlier than 7:00 AM
- When being dropped off in the morning, students will be directed to one of the multiple morning supervision locations available to minimize number of students in any one particular area
- Staggered release of buses to 1st hour classes to reduce hallway congestion
- Scheduled locker times to put supplies away and prepare for the day
- Locker spacing as best as possible
- Staggered dismissal by classroom for locker use and departure

### ***Hallways, Main Office, and Common Areas***

- Maintain six feet physical distancing when possible
- Require face coverings for staff and students
- Clearly mark areas to indicate safe distancing for students
- Perform health screenings for visitors
- Display visible signage reminding everyone of physical distancing and face covering usage at entryways, hallways, classrooms, and common areas
- Provide access to school building to authorized personnel only. Visitor access will be as needed only and will be restricted to the main office area (clearly visible signage at each entryway)
- Restrict students to specific areas as identified by the building administration
- Clean high touch areas throughout the day
- Staggered release of classes during passing periods
- **Hallway locker use during 1st hour, just prior to lunch, end of the day dismissal**
- Communal water fountains will be disabled except for the bottle refilling stations

### ***Cafeteria***

- Students may eat in the cafeteria, the commons, or possibly even in individual classrooms
- Floor markings will be used to control the flow of traffic
- Social distancing as best as possible at tables
- Stagger the release of students to the cafeteria to reduce the number of students waiting in the lunch line to purchase food
- Ala carte line will be monitored by staff
- Meals will be individually plated and all food items will be served individually to students
- Condiments will be served in individual packets
- Clean cafeteria and other eating spaces in between uses
- Clearly mark areas to indicate safe distancing for students
- Require staff and student face coverings (if not eating)
- Disposable trays and utensils will be used if students are eating in alternate locations.

## ***Restrooms***

- Maintain six feet physical distancing
- Require face coverings for staff and students
- Clearly mark areas to indicate safe distancing for students
- Display clearly visible signage reminding everyone of physical distancing and face coverings
- Scheduled restroom and handwashing breaks
- Clean high touch areas/restrooms throughout the day
- Assign restrooms to student groups when possible

## ***Shared Objects***

Students and employees are restricted from borrowing or sharing of any items. The CDC recommends that electronic devices, books, and other games or learning aids not be shared. Electronics, including, but not limited to, iPads, touchscreens, keyboards, remote controls, lunchroom keypads, door entry systems, etc., should be cleaned before and after use. Items that must be shared or communally used, must be cleaned after each use and individuals must perform hand hygiene between use. Utilizing hand sanitizer before and after the use of books or library material is recommended.

## ***Preparing for When a Student or Staff Member Becomes Sick***

Nippersink Middle School will communicate with families and staff that any individual who tests positive for COVID-19, or who shows any signs or symptoms of illness, should stay home. Families and staff should also report possible cases to the school where the individual attends school or works, to initiate contact tracing. Currently, known symptoms of COVID-19 are fever, cough, shortness of breath or difficulty breathing, chills, fatigue, muscle and body aches, headache, sore throat, new loss of taste or smell, nausea, vomiting, or diarrhea. In accordance with state and federal guidance, school community members who are sick should not return to school until they have met the criteria to return. The identity of any individual who test positive for COVID-19 will remain confidential and will not be released to the public.

CDC and IDPH guidelines for students who were suspected of having COVID-19, whether they were tested or not, state that 24 hours must elapse from the resolution of fever without fever reducing medication and 10 days must pass after symptoms first appeared. It is recommended that medically fragile and immunocompromised students consult their medical provider prior to attending school. Students or staff returning from illness related to COVID-19 should call to check in with the school principal following quarantine. Any individual within the school environment who shows symptoms will be immediately separated from the rest of the school population. Individuals who are sick will be sent home.

When interacting with students or staff who may be sick, school nurses and personnel should follow CDC guidance on standard and transmission based precautions. Students should never be left alone and must always be supervised while maintaining necessary precautions.

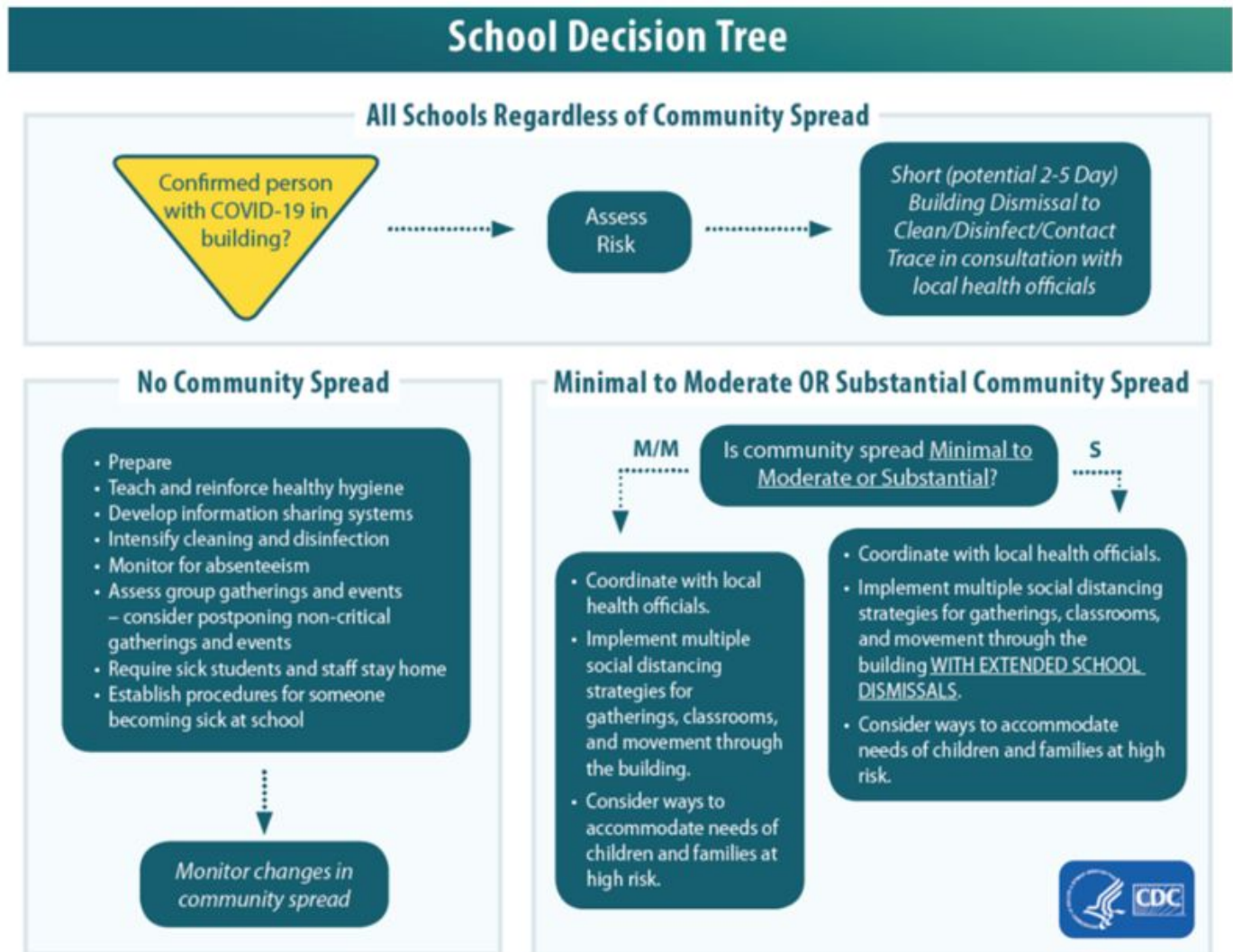
Close off any areas of the school used by a sick person and do not use these areas until after proper cleaning and disinfection procedures have been completed. Open windows to increase air circulation in the area. It is advised by the CDC to wait at least 24 hours before cleaning and disinfecting; if 24 hours are not possible, wait as long as possible. Clean and disinfect all areas, such as offices, bathrooms, common areas, shared electronic equipment, etc., used by the person who is sick. Ensure cleaning products are stored and used a safe distance away from children and staff. Individuals who did not have close contact with the person who is sick can return to work immediately after disinfection.

Those who had contact with someone who tested positive for COVID-19 or is suspected of having COVID-19 infection should isolate at home and monitor symptoms for 14 days. Close contact means the individual was within six feet of the individual with symptoms for more than 15 minutes. Additional cleaning and disinfection is not necessary if more than seven days have elapsed since the person who is sick visited or used the school. Continue routine cleaning and disinfection. This includes everyday practices that schools normally use to maintain a healthy environment.

***Immediate contact tracing will need to be conducted to identify who had “close contact” with the person. Close contact being within six feet for more than 15 minutes. After determining who had “close contact” these students/staff will need to follow the exclusion criteria. Contact tracing will be conducted primarily by the school nurse with support from administration.***

## School Closure Plan (guidance from CDC)

Nippersink Middle School must be prepared for a possible short-term closure, regardless of community spread, if an infected person has been in a school building. If this happens, the CDC recommends the following procedures regardless of the level of community spread.



## **Instruction**

Nippersink Middle School has developed an instructional plan to allow for a return to in-person learning for students, while holding paramount the health and safety of our students and community. We understand that students may have academic knowledge that varies more greatly between students than in previous school years. Teachers will use targeted interventions and differentiated instruction to help individual students reach their learning goals.

### ***Safety Education for Students***

Students will be receiving grade level appropriate education and guidance for proper physical distancing, proper use of PPE, and proper hand hygiene during the first two (2) weeks of school. NMS has developed a plan for providing students with building specific safety measures to follow with an explanation as to why these measures are important.

### ***Students Who are Medically Fragile or at Higher Risk***

The Administration will work closely with school nurses and parents, as well as the student's medical provider, to determine safe alternatives to in-person instruction. Nippersink Middle School will consider continuing Distance Learning for medically fragile students, students at a higher risk of severe illness, and students who live with individuals at higher risk of severe illness for the duration of Phase 4.

Appropriate consents must be obtained for communication with outside providers. Review IEPs, 504 Plans, asthma action plans, or Individualized Health Plans to determine if these plans will need to be amended or modified.

Teams should consider the following:

- Whether the student's medical condition is conducive to in-person attendance or if needs would best be met remotely.
- The student's behavior and capacities, including ability to control secretions, cover mouth/nose when sneezing and coughing, ability to maintain distance from other classmates, ability to tolerate wearing a face covering (may consider the option of face shield instead), ability to wash hands with/without assistance, and ability/safety of use of hand sanitizer.
- The number of students per classroom and ability to maintain six-foot distance, when possible.
- Consult with individual student health care providers, if applicable, and IEP teams to determine the best modality to meet the student's needs on an individualized basis.

For staff working with students who are present for in-person learning, Nippersink Middle School will provide appropriate PPE for continuous wear and during procedures such as feeding (e.g., gowns, gloves, and face shields). Maintaining strict social distancing will not likely be feasible due to the personal nature of common care and services, including feeding, toileting, suctioning, position changes, diaper changing, hand-over-hand assistance, physical therapy, and occupational therapy. Appropriate PPE should be used in conjunction with appropriate hand hygiene.



## **Special Services**

Students with an IEP or 504 Plan will continue to have the same support in both the hybrid and remote learning environment. Students will continue to receive related services (i.e. social work, occupational therapy, speech therapy, etc). These services will be provided in-person or remotely. Accommodations and modifications identified in IEPs or 504 plans will be provided. Parents will be contacted to conduct special education/504 meetings either in-person or remotely.

## ***Social and Emotional Learning (SEL)***

SEL curricula and additional supplementary services will continue to be provided for students and staff. Teachers will continue to implement the SEL curriculum with supplementary resources with an intentional focus on student's emotional health who may have been or continue to be impacted by COVID-19. Students will also have continued support from social workers, psychologists, and counselors at school. Surveys will be conducted for students in grades 6-8 to get more feedback on their SEL needs. Our teachers and staff teams will continue to identify students who may need additional support or interventions. Students with IEPs for SEL will continue to receive services based on their identified IEP minutes.

## ***Band and Choir***

Band and Choir education will follow the most current IDPH/ISBE guidelines for student and staff safety measures, maintaining 3-6 feet social distancing as best as possible. During Phase 4, this will include utilizing outdoor spaces when possible. Instrumental music teachers will continue to work with students in smaller sectional groups while additionally taking all precautionary measures during large group rehearsals. Students will need to wear face coverings if singing indoors. It is permissible for band members to remove their mask during the time they are playing, but only if necessary. Students will sanitize hands before and after handling instruments. Students should provide their own equipment for class; instruments will not be shared at any time. Instruments should be sanitized using approved disinfectant after each use. Special care should be taken with instrument mouth pieces. It is recommended that reed players use plastic instead of cane reeds.

## ***Physical Education, Gymnasiums, and Locker Rooms***

Physical activity can support students' overall health and help reduce stress and anxiety. Whenever feasible and weather permitting, NMS will select outdoor PE activities that allow physical distancing. If physical education must be taught inside, NMS will consider using separate partitions in open spaces, utilizing markings on the gymnasium floor/wall, or utilizing other locations in the building to maintain distance between participants. Handshaking, high fives, or other physical contact is prohibited. Health instruction will be delivered through the use of pull-outs during PE class. The use of shared equipment is not recommended. Any shared equipment must be cleaned between each use and disinfected at the end of each class. Fitness centers with equipment such as treadmills, elliptical, stationary bicycles, weights, etc., must be cleaned and sanitized before and after each class. Focus on frequently touched surfaces such as keypads, hand weights, handles, etc. **Students and staff must wash their hands or use hand sanitizer at the start and end of each class**

**period or when hands are visibly dirty.** Students must perform hand hygiene after the use of each piece of equipment. At this time, NMS will eliminate the need for use of locker rooms, as well as allowing students to participate in activities without changing clothing.

### **PE Daily Schedule**

- Students who are participating in in-person instruction during the hybrid will be required to participate in remote learning activities on Wednesdays only, otherwise PE instruction will only be occurring during in-person days.
- Students who are participating in full remote instruction will be required to participate in the following PE remote instruction Schedule:
  - Every Tuesday- 2:00 - 2:30
  - Wednesdays- During their regularly scheduled PE class

### ***Extracurriculars***

Extracurricular activities must follow the IDPH requirements set forth for the school setting, which include social distancing, appropriate use of PPE, limiting the number of individuals in one space to 10 individuals during Phase 3 and to 50 or fewer in Phase 4, and cleaning and disinfecting to prevent the spread of COVID-19. Due to the health and safety restrictions placed on schools, traditional school based events, like locker day, curriculum night/open house, field trips, assemblies, concerts, and performances, will not be permitted until the State of Illinois reaches Phase 5 of the COVID-19 Recovery Plan. Although we may utilize a virtual platform when possible for some events. The district understands the importance of school events in the life of a school community and will host virtual events when possible.

### ***Athletics***

Athletics will follow the guidelines provided by the IDPH, ISBE, and the Governor of Illinois. The IESA and IHSA have turned over control of athletic recommendations and/or decisions on whether we will have athletics or not to these agencies. We will provide updates as they become available. NMS will continue to work closely with the other schools participating in the Fox Valley Conference to determine the possibilities of future athletic seasons.

### ***Distance Learning Systems***

Students will use the District Learning Management Systems (LMS) and Student Information System for learning, grading, and for attendance purposes while enrolled in all remote learning. NMS will continue to use Schoology as the official LMS during the hybrid plan for both in-person and remote learning.

## Transportation

Nippersink Middle School is working closely with our transportation department to ensure procedures are in compliance with all applicable expectations under state and federal guidelines. **When possible this year, we ask that you drive your student(s) to school. This will help both Districts reduce the number of students on each bus and allow for greater social distancing. Just a reminder that all drop-off and pick-ups occur in the back of the building. Students being dropped off directed to one of the multiple morning supervision locations available to minimize the number of students in any one particular area.** All individuals on a bus must wear a face covering, no more than 50 individuals will be on a bus at one time, and social distancing will be maintained to the greatest extent possible. Students must undergo symptom and temperature checks, through self-certification, before boarding a bus. Students and families should be aware of procedures and expectations regarding transportation. Drivers and monitors will wear approved and appropriate PPE and perform regular hand hygiene. Before the start of each workday, drivers and monitors will undergo symptom and temperature checks to verify that they are free of symptoms. Drivers and monitors who have a temperature greater than 100.4 degrees Fahrenheit/38 degrees Celsius or symptoms of COVID-19 will not work. Drivers and monitors who become ill during their route will contact their supervisor immediately. The CDC recommends that entities should “create distance between children on school buses ...when possible.” No more than 10 individuals may be on a vehicle at any one time during Phase 3. No more than 50 individuals may be on a vehicle at any one time during Phase 4. The district will provide visual guides to ensure that students comply with expectations. Seating arrangements with respect to social distancing can be adjusted for students who live in a household with other students. Students will be monitored at school loading and unloading zones. IEP or 504 teams should meet to determine individual transportation needs for students who require special accommodations. All IDOT inspections will occur as required. In addition, student transportation vehicles will be sanitized each day. Seats and high touch areas will also be sanitized between routes. Sanitizing products will meet the EPA criteria and be used according to manufacturers’ guidelines.

***Prior to or on the first day of in-person transportation and instruction, each student will receive a tear-off pad with the school district’s symptom certification form. On each day of in-person instruction, the student’s parent/guardian is required to complete the form and have their student give it to their bus driver upon boarding the bus.***

**District #2 / District #157**  
**COVID-FREE SYMPTOM CERTIFICATION**

By signing this card, I certify that my child is safe to attend school and **DOES NOT** have any of the following COVID-19 Symptoms:

• Fever (Temperature of 100° or greater) or chills	• New loss of taste or smell
• Cough	• Sore throat
• Shortness of breath or difficulty breathing	• Nausea or vomiting
• Fatigue	• Muscle/body aches
• Headache	• Known close contact with a person who has been diagnosed with COVID-19

Date: \_\_\_\_\_

Student Name: \_\_\_\_\_

Guardian Signature: \_\_\_\_\_

## Operations

### *Facilities - Enhanced Cleaning*

Sanitation, hygiene, and PPE supplies will be ordered and stockpiled for employee access. All custodial/maintenance staff will be trained on the return to school guidelines, where applicable. These procedures will include extra sanitation efforts using certified EPA products in both low/high contact areas including:

- Countertops
- Desktops
- Door handles
- Bottle fillers
- Handrails
- Light switches
- Restroom fixtures

Building custodians and cleaning personnel will conduct daily cleaning and disinfection. An EPA approved cleaner will be used for disinfection along with our standard cleaning protocols. All frequently touched surfaces (e.g., door handles/knobs, desktops/tabletops, countertops, light switches, pencil sharpeners, computer keyboards, hands-on learning items, phones, lockers, sinks and faucets) will be cleaned on a regular basis. Restrooms, hallways, cafeterias, and high touch common areas will be cleaned throughout the day. Soft surfaces such as carpets and rugs will be cleaned daily.

Building and Grounds may adjust personnel schedules to meet reopening school needs. Cleaning schedules will be created and implemented for all facilities and equipment. Extra sanitation efforts will occur during in-class learning which will address high traffic/common areas.

High Traffic Areas:

- Entryways
- Foyers
- Hallways
- Main offices
- Restrooms
- Stairwells

## **Health Offices**

All school health offices will:

- Allow for six feet of distance between students, separation area for sick students, sink for hygiene, appropriate lighting.
- Limit the number of individuals allowed in at one time.
- Provide a supervised quarantine space for students who are experiencing COVID-19-like symptoms and may be awaiting evaluation and/or pickup. Students must never be left alone and must be supervised at all times while maintaining necessary precautions within the quarantine space.
- Disinfect a space after it is occupied by a student and deep clean daily.
- Require students exhibiting COVID-19-like symptoms wear a face covering unless medically contraindicated.
- Per CDC guidance, close off areas used by a sick person; do not use these areas until after cleaning and disinfecting. Wait at least 24 hours before cleaning and disinfecting. If 24 hours is not feasible, wait as long as possible.
- Supply school nurses and/or the administrator/designee working with individuals with illness symptoms with appropriate PPE. School nurses should use PPE, including gloves and face coverings, when interacting with students and staff. Appropriate PPE should be used in conjunction with appropriate hand hygiene and standard precautions.
- Require personal care aides working with medically fragile students wear PPE (e.g., face shields, face masks, and gloves).
- Implement strategies to reduce unnecessary visits from students, staff, and visitors; reduce health office congestion; reduce exposure to infection, and allow for separation.
- Supply staff with first aid supplies, such as bandages and gauze, in the classrooms. In certain situations, students may need to stay in place for an in-person evaluation by the school nurse.
- Perform daily cleaning of high-touch surfaces in the health office with a disinfectant noted to kill the coronavirus. \*Persons with common health conditions or those who need basic first aid should not report to the health office but may be managed in the classroom/alternate setting. \*Parents, guardians, or other authorized individuals should pick up ill students within a reasonable amount of time; students should not be allowed to utilize the school bus or public transportation for the return home. \*In the absence of a nurse, each school district's administrators must determine who will be responsible for meeting the health-related needs of students and staff.

## ***Recommendations for Families***

- State of Illinois mandated health examination and vaccine requirements will be due by October 15th, not September 1st.
- Please make sure all emergency contact information is up to date.  
All students should stay home if they are sick, with any illness symptoms.
- The CDC recommends everyone six months of age and older get vaccinated every flu season with rare exceptions. Flu symptoms overlap with coronavirus symptoms. Please vaccinate your children for influenza this fall.
- When reporting illness absences, be sure to report if your child is
  - Is a close contact of someone with a positive COVID 19 test
  - Has signs of coronavirus
  - Has been diagnosed with coronavirus
  - Has been diagnosed with influenza (respiratory flu).
    - For students with asthma, no nebulizer treatments will be given at school during the pandemic. Asthma action plans should reflect the use of asthma inhalers and spacers.
    - Please send your child with extra clothing in case a change is necessary as there will be no clothing stored in the nurse's office.

### ***What to expect if there is a confirmed case in school:***

- We will immediately notify local health officials. They will help administrators better determine a course of action for the school.
- Persons identified as being in close contact with the individual will be asked to stay home and isolate and be alert for symptoms for Covid-19.

### ***Returning to school after having had coronavirus:***

- Please call the school nurse prior to returning to school.
- Stay home for at least ten calendar days from the onset of symptoms **AND** for 24 hours with no fever (without fever reducing medication) **AND** improvement of symptoms. Parents/Guardians will have to provide an Isolation Release Letter from the local health department
- Please see the following link for more information:  
[COVID-19 Exclusion Guidance Tree](#)
- As new guidance emerges, guidelines may change.