

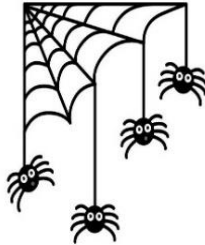
3rd Grade Home School Connection Libby Elementary

Week 5 of 2nd Six Weeks
October 19-23, 2020

READING:

3.9 (D) recognize characteristics and structures of informational text, including: (ii) features such as sections, tables, graphs, timelines, bullets, numbers, and bold and italicized font to support understanding.

3.10 (B) explain how the use of text structure contributes to the author's purpose



THIS WEEK

October 19-23- School Bus Safety Week & Bus Driver Appreciation Week!

Looking Ahead!

October 26-29- Red Ribbon Week!

October 26-29- Pumpkin Decorating Contest!

More Details to Follow!

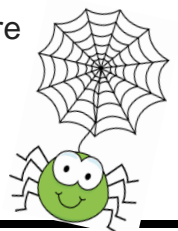
October 29- End of 2nd Six Weeks!

Spelling Word List

1. I've
2. let's
3. can't
4. aren't
5. didn't
6. won't
7. couldn't
8. wouldn't
9. you've
10. doesn't

Target Vocabulary

1. **interdependence** - when things depend or rely on one another
2. **food chain** - a series of living things that depend on each other as food sources
3. **camouflage** - hide or make harder to see in one's natural surroundings
4. **adaptations** - changes in plants and animals that help them survive
5. **biodiversity** - the existence of many different kinds of plants and animals in an environment
6. **conclude** - decide
7. **illustration** - a picture (noun)
8. **illustrate** - to draw a picture (verb)
9. **inform** - to give real information
10. **entertain** - for fun
11. **caption** - information that goes with a picture
12. **tone** - the author's attitude toward a topic
13. **message** - the theme or lesson in a story
14. **selection** - the story
15. **section** - a part of something



Grammar/Writing/Spelling

3.2 (A) demonstrate and apply phonetic knowledge by: (vii) identifying and reading high-frequency words from a research-based list

3.2(B) demonstrate and apply spelling knowledge by: (iii) spelling compound words, contractions, and abbreviations

3.11(D) edit drafts using standard English conventions, including: (i) complete simple and compound sentences with subject-verb agreement

3.11(E) publish written work for appropriate audiences



MATH:

3.2A- Compose and decompose numbers to 100,000 as a sum of so many ten thousands, so many thousands, so many hundreds, so many tens, and so many ones using objects, pictorial models, and numbers, including expanded notation as appropriate.

3.2B- Describe the mathematical relationships found in the base-10 place value system through the hundred thousand place.

3.4A – Solve with fluency 1-step and 2-step problem solving addition and subtraction within 1,000 using strategies based on place value, properties of operations, and the relationship between addition and subtraction.

3.5E- Represent real-world relationships using number pairs in a table and verbal descriptions.

3.6A- Classify and sort 2 and 3 dimensional figures, including cones, cylinders, spheres, triangular and rectangular prisms, and cubes, based on attributes using formal geometric language.

3.6B- Use attributes to recognize rhombuses, parallelograms, trapezoids, rectangles, and squares as examples of quadrilaterals and draw examples of quadrilaterals that do not belong to any of the subcategories.

FACT FLUENCY: x 4 & 8

- 4x0=0 8x0=0
- 4x1=4 8x1=8
- 4x2=8 8x2=16
- 4x3=12 8x3=24
- 4x4=16 8x4=32
- 4x5=20 8x5=40
- 4x6=24 8x6=48
- 4x7=28 8x7=56
- 4x8=32 8x8=64
- 4x9=36 8x9=72
- 4x10=40

Science Focus:

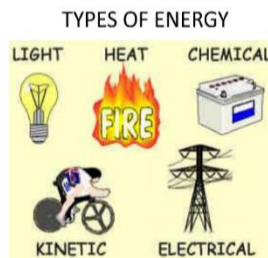
Forms of Energy

Social Studies Focus:

Our Communities

Math Vocabulary:

Three-Dimensional Geometric Solid, Bases		
Figures	Attributes	Surfaces
Solids	Faces	Edges
Prisms	Vertices	Parallel



- M** Mechanical Energy
- E** Electrical Energy
- L** Light Energy
- T** Thermal Energy
- S** Sound Energy

Forms of Energy

