

Out of the box:

1. Insert battery and press the back cover to close.
2. Note: SIM is pre-installed.
PLEASE do not remove.

Turn mobile hotspot ON:

1. Press and hold the Power button for 1-4 seconds.
2. AT&T Logo will appear.
3. Before configuration, the screen will display "Setup Required" - press the Power button to close and continue.

Current Display - device will display a screen similar to Figure 1. The device may not yet show connections.

Note -Sleep Mode

If there have been no transmissions or operation of your device, or if the battery is low, your device automatically enters sleep mode to save power. In sleep mode, WLAN is disabled. To wake from Sleep Mode:

1. Press the Power button to turn the display on and exit sleep mode.
2. WLAN function is enabled and WIFI devices can reconnect to the hotspot. The time required to recover the network connection varies by environment, settings, etc.

Note - Status *LED* indicates data connection status:

- *Blue, slow-blink*. The mobile hotspot is ready, but no devices are utilizing data
- *Blue, double-blink*. The mobile hotspot is transferring data.
- *Amber, slow-blink*. The mobile hotspot is not connected to the network or is in standby mode.

Connect a device to the Mobile Hotspot

1. Connect a laptop or tablet to the hotspot via Wi-Fi. The SSID (Wi-Fi network name) and password are displayed on the mobile hotspot. If the hotspot displays a different display screen, click the Power button to cycle through the displays to get to this screen.
2. Alternative: connect via USB cable. All configurations steps are the same as if connected via Wi-Fi.
3. *Recommended*: verify data connectivity by going to a webpage.

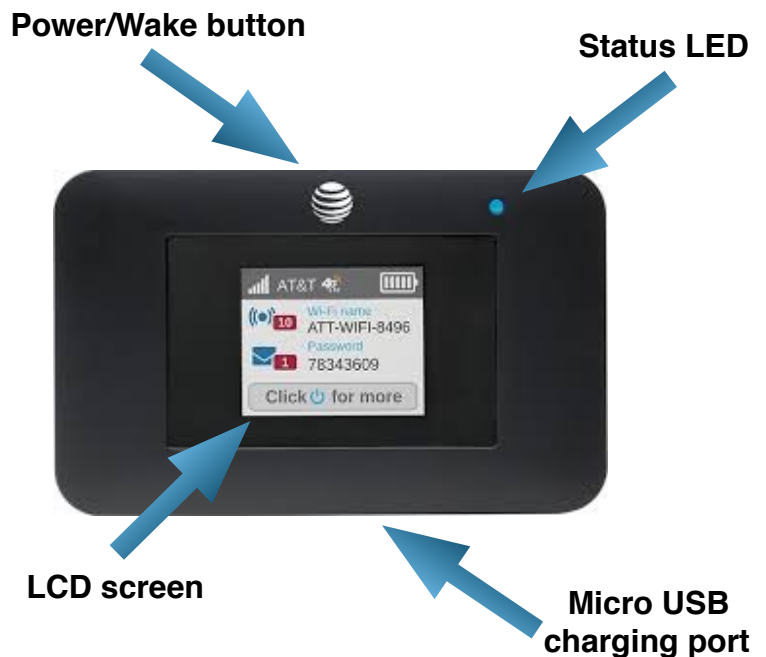


Figure 1. Mobile hotspot buttons and connectors