



Leaf Sorting

COLLECT AND SORT FALL LEAVES STEM ACTIVITY FOR K-2

SCIENCE QUESTIONS:

- Are all leaves green?
- Do all leaves have the same shape?
- Do leaves come in different sizes?
- Are the patterns of the veins the same in all leaves?

MATERIALS:

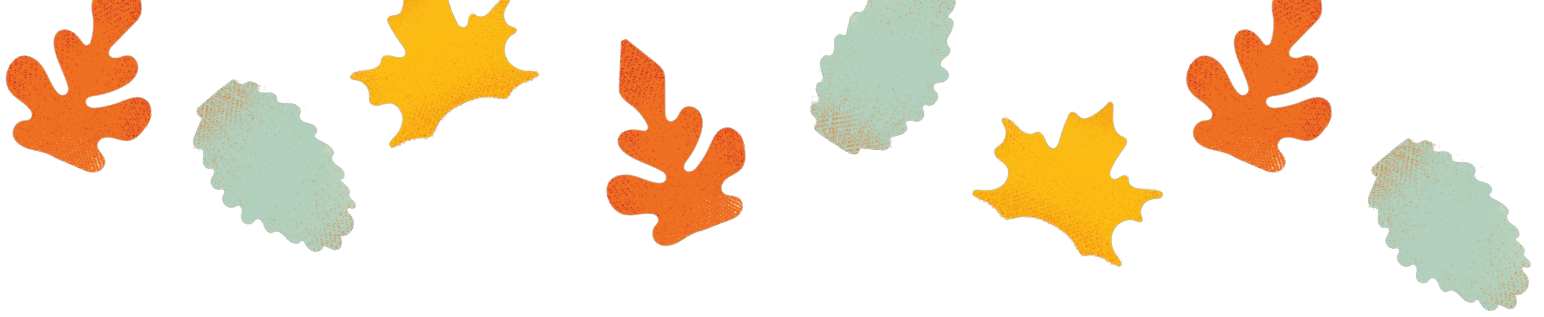
- At least 10 leaves from different plants
- Worksheet
- Colored Pencils or Crayons
- Paper (copy paper or construction paper, light colored)

PROCEDURE:

1) Gather at least 10 leaves from different sources. You can pick up fallen leaves, gently pluck leaves off of outdoor or indoor plants or even collect leaves from weeds.

2) Sort by color using worksheet. Leaves come in colors such as green, red, purple, grey, yellow, brown and multi-colored. Count how many leaves are in each category and record your answer. You could also take a picture to show how you categorized them.

3) Sort by size using worksheet. Leaves come in different sizes. Even on the same plant there can be small leaves and large leaves. Try to separate your leaves into at least 3 piles- small, medium and large. Then if there is enough difference go to 5 piles- tiny, small, medium, large, extra large. Record how many leaves are in each pile. You could also take a picture to show the different sizes.



PROCEDURE (CONT):

4) Sort by shape using worksheet. Leaves come in lots of different shapes. Sort your leaves by matching them to the shapes on the worksheet. You may have lots of leaves of one shape and no leaves for certain shapes. You might even find a leaf that doesn't match the shapes on the page and you can call it "other".

5) Sort by vein type using worksheet. Leaf veins are used to move water and nutrients in the leaves. Leaves have unique patterns. Match the leaf veins to the different types on the worksheet. You may have lots of leaves with one type of vein and no leaves for other patterns. You might even find a leaf that doesn't match any of the vein patterns and you can call it "other".

6) After all the sorting and classifying it is time to create leaf art. Use the copy or construction paper and the colored pencil or crayon to create a leaf rubbing. To do this place your favorite leaf under the middle of the paper and gently rub your pencil and crayon across the top of the paper. You will see the leaf edge and veining show up as darker lines.

7) After creating the art you can label it with the categories it was sorted into. This is a (size) (color) leaf with a (shape) shape and (pattern type) vein pattern.

DISCUSSION:

- What did you learn about leaves?
- Did anything surprise you?
- What would you like to learn more about the topic of leaves?
- Who are you going to share your leaf art with?





Sort by Color

COLLECT AND SORT FALL LEAVES STEM ACTIVITY FOR K-2

DIRECTIONS:

- Sort your leaves into piles matching the colors on the page.
- When finished write down the number of leaves for each color.

GREEN:

YELLOW:

ORANGE:

RED:

BROWN:

GREY:

PURPLE:





Sort by Size

COLLECT AND SORT FALL LEAVES STEM ACTIVITY FOR K-2

DIRECTIONS:

- Sort your leaves into piles matching the sizes on the page for large, medium and small.
- When finished write down the number of leaves for each size
- Re-sort your leaves into piles for the second column using the extra large and tiny categories if they apply to your leaves..

EXTRA LARGE:

LARGE:

LARGE:

MEDIUM:

MEDIUM:

SMALL:

SMALL:

TINY:



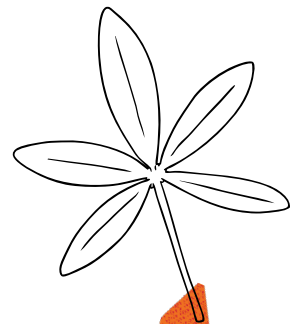
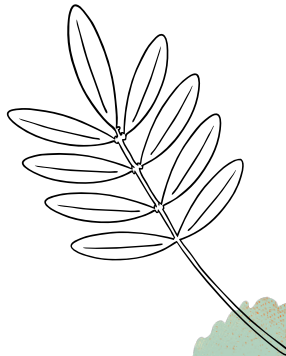
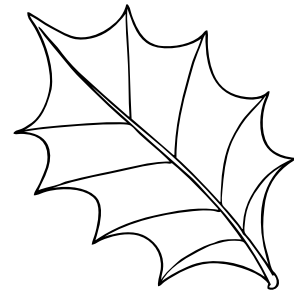
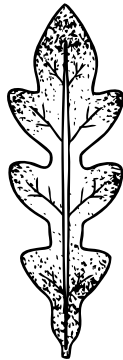
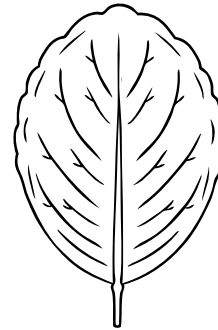
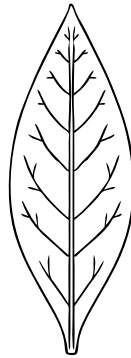


Sort by Shape

COLLECT AND SORT FALL LEAVES STEM ACTIVITY FOR K-2

DIRECTIONS:

- Sort your leaves into piles matching the shapes on the page.
- When finished write down the number of leaves for each shape





Leaf Sorting

COLLECT AND SORT FALL LEAVES
STEM ACTIVITY FOR K-2
TEACHER NOTES

NEXT GENERATION SCIENCE STANDARDS:

K-LS1-1. Use observations to describe patterns of what plants and animals (including humans) need to survive.

RESOURCES:

ACCOMODATIONS:

EXTENSIONS:

