

RILEY COMMUNITY CONSOLIDATED SCHOOL



DISTRICT 18
9406 RILEY ROAD
MARENGO, IL 60152
PHONE: 815-568-8637
FAX: 815-568-3709
www.riley18.org

CHRISTINE CONKLING, SUPERINTENDENT
FRANK VICARI, PRINCIPAL
ELIZABETH SHEAHAN, SECRETARY
KAREN SCHNABLE, BUSINESS MANAGER
LIS BERGMAN, ADMINISTRATIVE ASSISTANT

Vol. 41 No. 1&2
September-October 2020

WELCOME BACK!

NEWS FROM SUPERINTENDENT CONKLING

I would first like to thank all of our families and staff for their hard work and support as we entered our new school year. It has been a trying time for everyone, and I think we are off to an amazing start. All of the hard work was worth it when we saw how excited the students were to be back in the building. We are still working to improve our instructional model, and there have been a few glitches. However, overall, I feel we have established a much stronger educational program for our students learning remotely. About 80% of our students are attending in person, and they have shown how resilient children truly are. They have handled the

transition back to school like champions and continue to impress us every day!

Our summer building projects have made the start of our year much more comfortable. The new HVAC system has allowed us to utilize the air conditioning in all our classrooms. This has been a welcome relief at the start of the year, especially with everyone wearing masks. We are still working to finish up some of the final tasks in the project, should be completed soon.

I want to remind you as well that students should still continue to bring water bottles to school as we have many of our water fountains shut down for safety reasons. Only the bottle fillers are working.

I would also like to welcome all of our new families to Riley. Under these unusual

circumstances, it has been difficult to meet everyone with the limited access to the building. I look forward to getting to know you as the year progresses and we can hopefully get back to a more normal school situation later in the year.

Riley is a unique school that has developed a strong sense of pride and spirit. We have traditions and expectations that have shaped the educational experience our students are exposed to. We encourage you to be a part of that experience, as we view education here at Riley as a partnership between home and school. Parental involvement and concern plays a significant part in our school's success and reputation.

As we continue this school year, I am sure we have not seen the end of the challenges we will face. As we head into the time of year when flu season

comes into play, I am sure we are going to be challenged with more students being quarantined at home due to flu/covid-like symptoms. We continue to work with the local health department to ensure that we are following protocols and take advantage of the support they can provide. They did a site visit last week and we were very pleased with the positive feedback we received on the precautions we are taking. We also welcomed some of the advice they provided as well. You may have seen in the news that a system of metrics has been created by the health department and area school superintendents. Those metrics are designed to be used as one source of information that will aid districts in determining when it is appropriate for them to come back to school. Obviously we are already back in school. This system does not necessarily apply to what where have done here at Riley. Although I was involved in working on this system of metrics with other area superintendents, the health department realizes

that our situation here at Riley is very different than other districts. Our size and community metrics allow us to do things that other school districts cannot. We have the full support of the McHenry County Health Department in our decision to start back with in-person instruction. Our ability and capacity to put a plan in place that would allow our students to be back in our classrooms allowed us to move forward before other districts were able to. We will continue to use the data available to us as we follow our educational plan for this year. Again, I am sure we will see more challenges, but we are working to be prepared for any situation that arises.

I cannot stress enough the appreciation the administrative team feels towards our families and staff. Everyone is working together to make the best of a difficult situation. Your cooperation and understanding with the daily screenings, calls when a student is not well, and working with the health options available to us at this time are all truly appreciated. This is what allows us to continue with

in-person instruction as long as we possibly can. We have an amazing community and I felt privileged to be a part of it. I wish you all the best and look forward to seeing you all as soon as we can.

QUARTER TWO SURVEY

As we get ready to end the first quarter, we will be sending home a commitment survey to our remote learner parents in an effort to determine who will be returning to school here in-person for the second quarter and who will continue as a remote learner. We will need those commitments by October 16th. This will allow us to make the necessary arrangements for students to reenter the building. Some classrooms may need to be moved in order to accommodate the new class sizes. Watch your emails for the survey coming soon. Also, we will need to know if students will be riding the bus or will be driven by parents. We will have this in the survey as well. For those parents already driving their students, we will ask you if you will be willing to continue doing so as we continue into the second

quarter. Your help in this area has been one of the key factors that has allowed us to have in-person instruction. If we go over our 50 student limit, we may have to reroute buses and run multiple routes. This would be a significant change to our day and the plan we have in place.

MASKS

There has been new guidance on the type of masks that are permissible in schools. All masks need to have a double layer. If you are wearing a gator style, it must be a double layer style. The single layer type is not permissible as it does not meet the requirements. If your child has this type of face covering, please replace it with a double layer mask type.



MASS COMMUNICATION

Our mass communication system, Apptegy/Thrillshare, allows us to notify our district's families if there is an emergency closing of school due to inclement weather or other uncontrollable circumstances. We also use this system to notify our families of important school events or dates as determined by the district. All communication takes place through the phone system for ease of access and more reliable contact. **If you receive a call from the school but don't answer the phone, please listen to the message. If you try to call the school to see what the message was, it may overload our lines.** In addition, in a true emergency closing, there may not be personnel to answer all calls coming in to the office. Also, if you have a long answering machine message, a pause in your message or you have a song that greets your callers, this may interrupt the school's message. If you are not receiving your messages from us these are the

most likely reasons. You may want to adjust those so as to ensure that you receive important messages.

LUNCH PROGRAM

Right now, lunches are free to all students attending here at Riley. In the future, when they are no longer free, TeacherEase will allow you to monitor and purchase lunch and milk for your child online. Purchases online will require a credit or debit card, and there will be a fee for each transaction. You will still be able to send cash or checks to the office if you do not want to pay online. You will be depositing money into an account for both lunch and milk purchases. When sending money in, please make a notation as to which students are to receive the money and the amount for each student. An individual lunch costs \$3.05 and milk costs \$0.35. Remember milk automatically comes with hot lunch. Students (K-4) will be charged for morning snack milk and for milk with their cold lunch. Students (5-8) will be charged for milk with cold lunch and for extra

milk with hot lunch. This includes students who qualify for free/reduced lunch. If you have any questions, please contact Mrs. Conkling or Mrs. Bergman. Notification emails on how to access your account on TeacherEase were sent out prior to the start of school.

SCHOOL BUS SAFETY

About 22 million children ride to and from school each day in 350,000 buses. Travel on a school bus is the safest kind of transportation, but it takes everybody's help to keep it that way and make it even safer.

STUDENTS' JOB

- *Walk to your bus stop. Avoid parents driving you there.
- *Leave home early enough to arrive at your bus stop on time.
- *Wait for the bus in a safe place, well off the roadway.
- *Enter your bus in an orderly manner and take your seat.
- *Follow the instructions of your school bus driver.
- *Keep aisles clear at all times.
- *Remain quiet and orderly.
- *Be alert to traffic when leaving the bus.

DRIVERS' JOB

- *Be in good physical condition.
- *Check the bus before & after each trip.
- *Be on time at each stop.
- *Drive safely at all times.
- *Obey all laws.

PARENTS' JOB

- *Have children at the bus stop on time.
- *Know the rules of the bus riders.
- *Support the driver if behavior problems occur.

MOTORISTS' JOB

- *Know the school bus law and obey it.
- *Report illegal school bus driving.

Also, as a courtesy to bus drivers, if your child is not riding the bus in the morning, please call so we may alert the driver. Thank you for your cooperation.

PEST MANAGEMENT

Riley School participates in an integrated Pest Management program with the Anderson Pest Control. On the fourth Friday of each month, any pesticides or insecticides that must be applied

around the school will be accomplished well before the children arrive at school in the morning. The fourth Friday of each month will be a consistent date throughout the school year. In the case of the need for liquid or aerosol application of pesticides, parents will be notified not less than 48 hours before application. Parents or staff who would like to be notified prior to the application of pesticides to grounds, or property around Riley School is asked to contact the Riley Office at (815) 568-8637.



HEARING/VISION SCREENING

The McHenry County Health Department has postponed Hearing/Vision screening TBD in January 2021.

PRE-SCHOOL SCREENINGS

Marengo-Union School District #165 & Riley School District #18 – Preschool Program

Screenings are now being scheduled.

Marengo-Union School District #165 & Riley School District #18 are currently accepting screening appointments for their Preschool Program. Screenings are available in English and Spanish for children 2 years, nine months through 5 years of age. To schedule an appointment, please call Locust School, 815 568-7632.

The preschool program is a State of Illinois grant-funded joint initiative between Marengo-Union School District and Riley School District. It is housed at Locust Elementary School and eligible children are determined following a mandatory screening administered by Locust School staff. The program is a regular preschool program and is free of cost for those eligible. Transportation is included. The purpose of the grant-funded program is to provide a regular education, high quality, preschool program to qualifying families. The program meets Monday-Friday, either half day or full day. The full day program is intended to meet the needs of older preschool students getting ready for Kindergarten.

NO BIRTHDAY TREATS

Parent/Guardians – this is a reminder that due to COVID-19 and various restrictions, please refrain from sending in/dropping off birthday treats.

MAP TESTING



We have completed our MAP testing. This is the universal assessment for our Response to Intervention Program. It will be administered three times throughout the school year. Through this assessment we will be identifying students that may be in need of extra assistance in the area of reading and math. These students will receive additional instruction in the area targeted by the MAP testing. This assistance will occur during the school day here at Riley and is referred to as an intervention. You will receive a letter notifying you if your child has been identified in need of this extra assistance. The length of time for the intervention is

determined by the student's progress in the program. It can be a short-term or long-term intervention. Response to Intervention is a federally mandated program that all schools in Illinois must participate. We have included a pamphlet on Response to Intervention with these NEWSNOTES. If you have any questions about Response to Intervention or the assessment process, feel free to contact your child's teacher or Mr. Vicari.

RED RIBBON WEEK

October 26-30th Riley School will be observing Red Ribbon Week (Campaign to inform students' why it is important to stay drug free and choose healthy alternatives). This year is "Be Happy, Be Brave, Be Drug Free."

Throughout the week, students pledge to be drug, alcohol, and tobacco free and lead a healthy and positive lifestyle. They also pledge to tell others about the dangers and consequences of drug, alcohol, and tobacco use/abuse.

The 8th grade class representatives are working hard together organizing a variety of events that all students will have the opportunity to participate in during Red Ribbon Week. Keep an eye out for a flyer to come home during the next week.



UNLICENSED MOTORIZED VEHICLES

Unlicensed motorized vehicles are not permitted on school grounds. Students and adults should not be returning for after school activities on these vehicles. They pose a safety and liability risk. Thank you for your cooperation.

VISITORS

Although we are limiting visitors at this time, we want to remind you that in the future all adults will be asked to sign in and sign out at the office if they enter the building in the morning to drop off students. This allows us to monitor guests in our

building. If you would like to meet with a teacher, you need to check in the office to see if the teacher is available or an appointment may be arranged.

8TH GRADE UPDATE

Class Officers

Congratulations to this year's 2020-2021 Riley School Class Officers:

President: Kylee Jensen
Vice-President: Brooke Pribyl
Treasurer: Leila Becovic



BOON SUPPLY

The 7th and 8th grades will be selling items from Boon Supply. Students will receive one catalog but all orders will be submitted online. The fundraiser will kick-off on Monday, October 5th and ending on Monday, October 19th. The funds for each class will be placed in their respective accounts. I am hoping sales will be strong in both classes to help with costs for activities in

the future. Due to the uncertainty at this time of how long we may or may not be in school, I felt it was in the best interest to run the fundraisers sooner rather than later. If you have any questions, please contact Mrs. Lagerstrom at 815-568-8637.



40th ANNUAL PUMPKIN RUN FRIDAY, OCTOBER 23rd

The PE Department is excited to announce the date of the 40th Annual Pumpkin Run. All students, K-8th will run the Pumpkin Run on Friday, October 23rd during their PE classes. Although some things will be different, many traditions of the pumpkin run will remain the same. Due to social distancing and no gatherings over a certain amount, this year there will be no parent/family spectators - we are very sorry. The PE Department along with the Riley Staff will be cheering on your child/children this year as they complete their

pumpkin run. As a parent/guardian you can do your part this year by making sure your child/children bring a water bottle to school, wear athletic/comfortable clothes, wear gym shoes and have a nutritious breakfast on the day of their run.

Throughout the month of September and October students in all grades have been practicing running different lengths of distances to improve their cardiovascular endurance and prepare for the Pumpkin Run.

K-2nd graders run a ¼ mile
3rd & 4th graders run ½ mile
5th-8th graders run one mile

RILEY ATHLETICS

On July 29th, 2020, the Mid-Northern Middle School Athletic Conference's Administrative Team made a collective decision regarding all conference-based interscholastic athletic contests and activities for the upcoming Fall 2020 Athletic season. Effective immediately, all intra-conference regular season and postseason contests, tournaments and activities currently scheduled in all of the

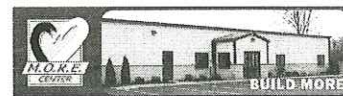
MNC Fall sports have been cancelled. In the end, the physical health and safety of our respective student-athletes, staff members and our community members as a whole was a driving force behind this difficult decision. Careful consideration and dialogue regarding facility conflicts and transportation issues were discussed. Guidance and Recommendation documents from multiple state organizations including ISBE, IHSA, IESA and IDPH were reviewed in making this final determination. The demographics of the respective school districts which make up the MNC membership were also a contributing factor.

The Mid-Northern Middle School Athletic Conference's Administrative Team will continue to reassess the feasible options available to us in regards to the Winter Sports season moving forward as we await updated guidance and direction from our state and local governing bodies. There may be options to reinstate Fall sports later in the school year. As the Mid-Northern Middle School Athletic

Conference continues to meet and discuss options our school community will be informed of any changes or restructuring of the athletic program.



Keep your eyes open for the **Art to Remember** packet in your child's backpack next month!



All children deserve to be celebrated on their birthday – this is a means to help make their day special for those family's that may not be able to. Did you know that Birthday Bags are available for children served by M.O.R.E.?

A birthday Bag/Box consists of items needed for a birthday party for 8. Plates, cups, napkins, tablecloths, utensils, cake mix, frosting, pizza supplies, disposable baking pans, treat bags, candles, and more.

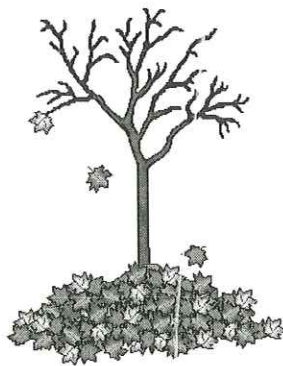
Notes:

- Communication with a recipient or his or her family is prohibited to

protect the child's and family's privacy

- Bags will not be provided for the general community, only those served by M.O.R.E.
 - Should there be an "ask" for a bag within the group those will be directed to sign-up with M.O.R.E
- M.O.R.E also provides Emergency Assistance!
- No credit is due to the group
 - Bags will be hand-out ready when provided to M.O.R.E. with tag boy/girl
 - Gather items in advance of birthdays so that a package is available + extra's for newcomers
 - Drop-off at M.O.R.E

marengomorecenter.org
829 Greenlee St
Marengo, IL 60152
Phone: (815) 568-7950



How Parents Can Be Involved:

- Attend school activities such as parent-teacher conferences
- Monitor and assist your child with homework assignments
- Praise your child for progress and improvement
- Share with your child's teacher what works well at home
- Ask questions when things are not clear
- Support the classroom teacher in the quest to provide appropriate instruction for your child

Need More Information?

Response to Intervention (RtI): Primer for Parents
www.nasonline.org/resources/factsheets/rtiprimer.aspx

Intervention Central
www.interventioncentral.org

International Reading Association
www.reading.org/resources/issues/focus/rti.html

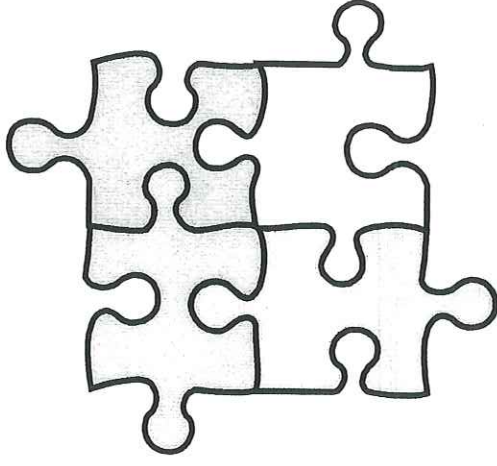
National Research Center on Learning Disabilities
www.nrcld.org/topics/parents.html

Illinois Aspire Grant
www.illinoisaspire.org/welcome/parent_resources.php

RtI Action Network
www.rtinetwork.org/Parents-and-Families

A Parent's Guide to

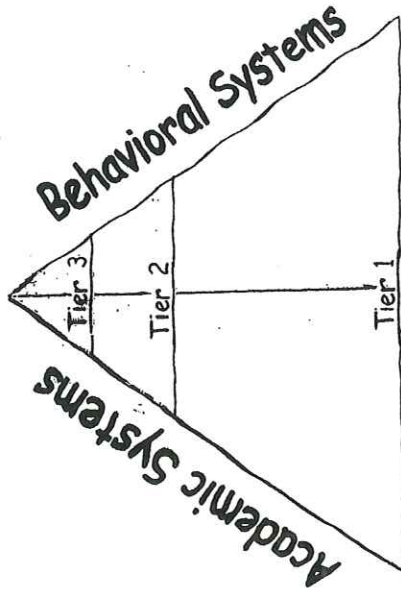
Response to Intervention



What is RtI?

RtI is a leveled system where teachers provide supplemental instruction to students that need extra academic and/or behavioral support. There are 3 specific levels referred to as tiers. Students receive more intense instruction as they move through the tiers in order to help them achieve grade-level goals.

Changes in federal and state laws emphasize the importance of providing quality, research based interventions. RtI is a mandated program that all schools must implement to meet the academic and behavioral needs of all students.



Tier 1: -Core Curriculum
-Whole Group/Core Instruction
-For All Students in the Class

Tier 2: -Small Group Interventions
-For Some Students (At-Risk)
-Done in Addition to Tier 1

Tier 3: -Intense Interventions
-Customized Interventions
-For a Very Small # of Students

Benefits of RtI:

- Eliminates the “wait to fail” situation that prevents at-risk students from receiving services earlier rather than later
- Improves education for ALL students
- Reduce the overall number of students referred for special education services and increase the number of students who succeed within the general education classroom
- Through universal screening, progress monitoring, and teacher input, students are identified and interventions are put in place to address learning needs

Terms to Know:

Universal Screening: A procedure in which all students are given an academic screening test three times per year in order to identify students at risk for not meeting grade-level standards

Progress Monitoring: A practice used to frequently assess a student’s academic skills to determine effectiveness of an intervention

Intervention: Additional academic and/or behavioral support provided to improve student performance

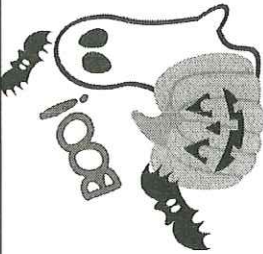
Scientific, research-based intervention: A specific curriculum or educational intervention that research has proven to be effective

Principles:

- Continuously monitor student progress through universal screening
- Early intervention is crucial
- Choose and implement scientifically-validated interventions
- Use progress-monitoring data to change instruction at each tier
- Communicate with parents as students move between tiers
- Employ practices to ensure that interventions are implemented consistently and correctly

RILEY SCHOOL LUNCH MENU OCTOBER 2020



MONDAY	TUESDAY	WEDNESDAY	THURSDAY	FRIDAY
LUNCH TICKET PRICES 20 DAY- \$61.00 5 DAY - \$15.25 20 DAY MILK - \$7.00	Choice of milk served daily with meals: 1% White Fat Free Chocolate Skim		1. Macaroni & Cheese Vegetable Fruit	2. Peanut Butter & Jelly Sandwich Vegetable Fruit
5. Assorted Chicken Vegetable Fruit	6. Chicken Fajita Cheese/Lettuce Vegetable Fruit	7. Pancakes Hashbrowns Fruit Cheese Stick	8. Calzones Vegetable Fruit	9. 11:30 DISMISSAL NO LUNCH
12. NO SCHOOL COLUMBUS DAY	13. Quesadilla Vegetable Fruit	14. French Toast Sticks Hashbrowns Fruit Cheese Stick	15. Mostaccioli Vegetable Fruit Breadstick	16. Ham or Turkey Wrap Cheese/Lettuce Vegetable Fruit
19. Orange Chicken Rice Vegetable Fruit	20. Soft Shell Taco Cheese/Lettuce Vegetable Fruit	21. "NEW ITEM" Sausage Breakfast Pizza Hashbrowns Fruit	22. Pepperoni Pizza Vegetable Fruit	23. Chicken Nuggets Vegetable Fruit
26. Corn Dog Nuggets Vegetable Fruit	27. Lasagna Rollups Vegetable Fruit Garlic Bread	28. Hamburger Vegetable Fruit	29. Chicken Patty Sandwich Vegetable Fruit	30. Hot Dog Vegetable Fruit

Ways to Help RPA this Year!

- ◆ **Volunteer** at RPA events if allowed to have one. :)
- ◆ **Save Box Tops** for Education labels. Turn them in to your child's classroom each month. Each box top = \$.10.
- ◆ Use **Scrip Gift Cards** for your shopping. Look for your order forms to come home soon.
- ◆ Attend **RPA meetings**.

2021 RPA Update

So sad to say that we are unable to do all of our fun things we usually do at the beginning of the year, such as our Walk-a-thon and Hall of Harvest. The RPA is still here, and will start meeting again on Wednesday, October 7th at Joe's Place in Marengo. We would always love any suggestions of something we could still do for the kids that would involve social distancing. One thing for sure is 2021 is going to be a BIG year for parties!! We will make it up to the kids as soon as we are able!! Until then we will do what we can and will always welcome suggestions.

RPA Dates to Remember:

10/7 RPA meeting @ 7:00 pm @Joe's Place

10/16 Fall Painting Night Out

THANK YOU!!!

Big THANK YOU to our wonderful teachers and staff at Riley school!!

We so appreciate everything you do for our children!! You are an ESSENTIAL part of our world and we love you!!!



RPA Board Members & Chairs 2020-2021

Pres.	Wendi Aubry	815-568-0967
V.P.	Shellie Kamminga	847-204-8209
V.P.	Amber Schueler	847-308-4737
Sec.	Buffy Oine	847-293-9634
Treas.	Aimee Ritter	815-568-7706
Scrip	Shellie Kamminga	847-204-8209
Box Tops	Vicki Kaczkos	847-791-4019

Sign Painting Party – Fall 2020

100% of the proceeds go back to Riley.

WHEN: Friday, October 16

WHERE: Joe's Place

TIME: 6:00-8:00

**** Fill out the bottom portion and mail with payment to**

Aimee Ritter 922 Randall Ct., Marengo 60152**

ALL ORDERS ARE DUE BY OCTOBER 9th, NO EXCEPTIONS!

A



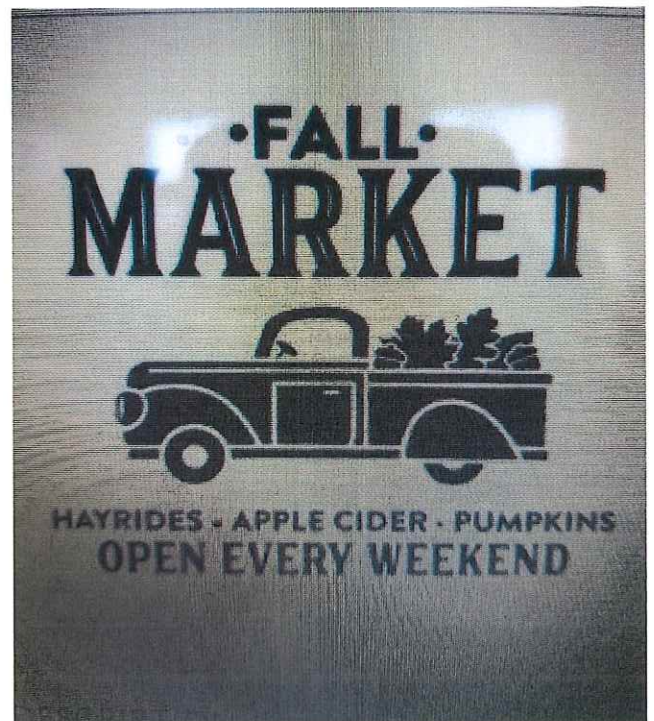
B



C



D



Name: _____

Option A. _____ Option B. _____ Option C. _____ Option D _____

Total Cost = \$35 (Checks made payable to RPA)

*******Only the first 48 registrations will be excepted to abide by current Covid-19 regulations. Also masks will be required to participate.*******

Thank you for helping to keep our community safe.

Any questions, please email Aimee Ritter at aritter5@netzero.com or send a text to 815-703-6725

**¡UNA INVITACIÓN PARA TI!
¿QUIERES APRENDER INGLÉS? - PARA OBTENER
UN TRABAJO MEJOR REMUNERADO -
PARA COMUNICARSE MEJOR CON LOS
MAESTROS DE SUS HIJOS - PARA FACILITAR
LAS VISITAS AL MÉDICO - PARA HACER
NUEVOS AMIGOS**

**¿DÓNDE? EN LA IGLESIA LUTERANA ZION, 412
JACKSON STREET, MARENGO.**

**¿CUANDO? LAS CLASES COMIENZAN EL
JUEVES 17 DE SEPTIEMBRE
CENA Y CONVERSACIÓN A LAS 5: 30-6: 30 PM
INSTRUCCIÓN 6: 30-7: 30 PM
SE BRINDA CUIDADO DE NIÑOS DURANTE LA
INSTRUCCIÓN.**

**¿CUANTO CUESTA? ¡LAS CLASES SE OFRECEN
SIN COSTO PARA USTED!**

**¿CÓMO ME REGISTRO? EN PERSONA EN LA
OFICINA DE LA IGLESIA LUTERANA DE ZION O
[HTTPS://FORMS.GLE/7W7QDNXLVUVSRXH9](https://forms.gle/7W7QDNXLVUVSRXH9)**

PREGUNTAS: LLAME A LAUREN OLSEN 815-923-2733