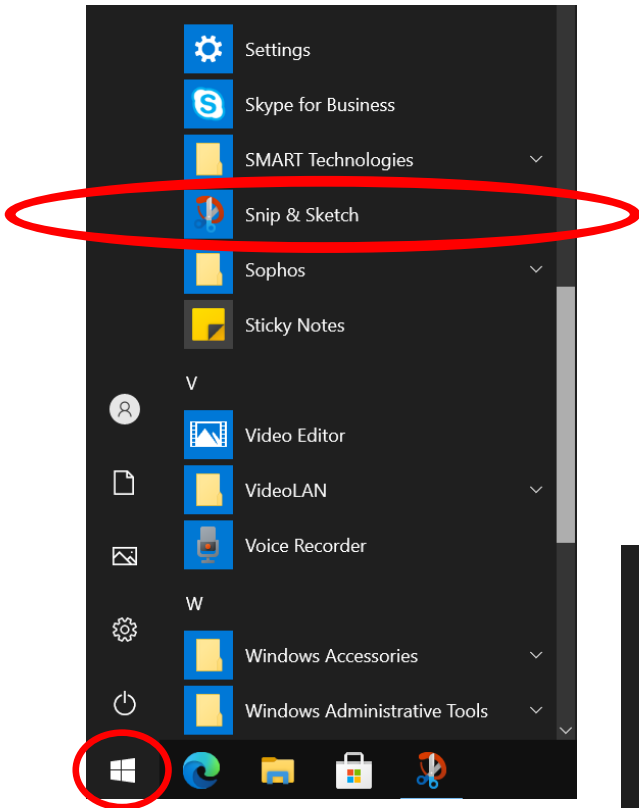


Take Screenshots with Snip & Sketch

Need to take a screenshot using your laptop? Snip & Sketch makes it easy!

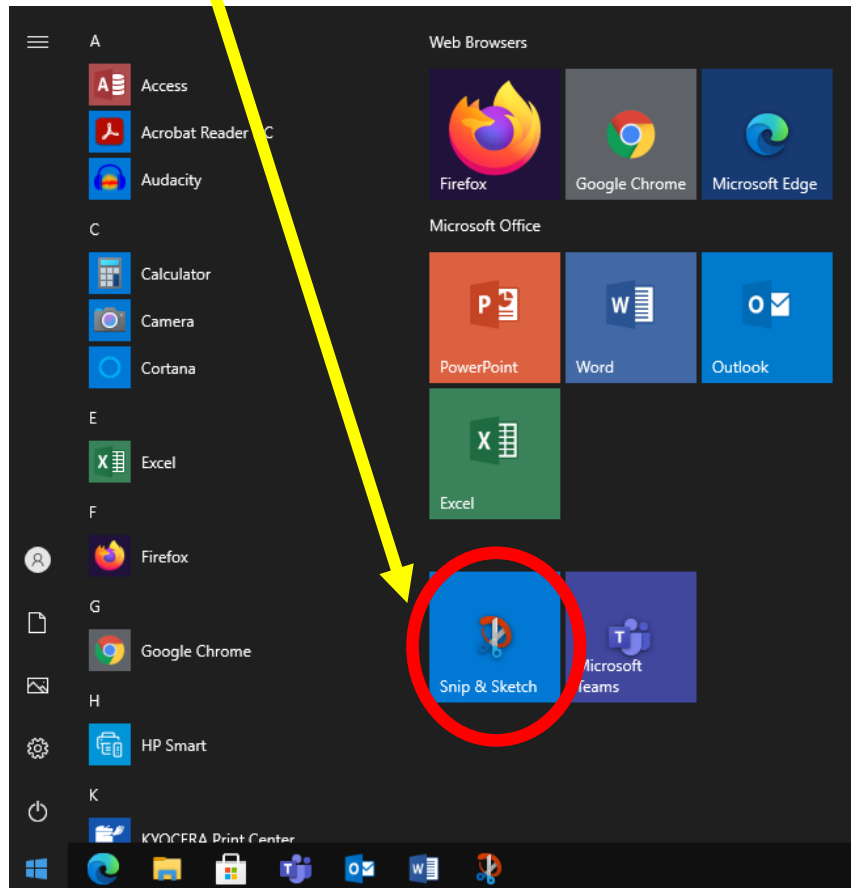
- 1) To open this app for the first time, click the Start button and then scroll down to Snip & Sketch.



Tip: If you think you'll use this app a lot and want to be able to get to it more quickly, RIGHT-CLICK on it here and then choose "Pin to Start", which will make it appear here as a shortcut anytime you click the Start button.

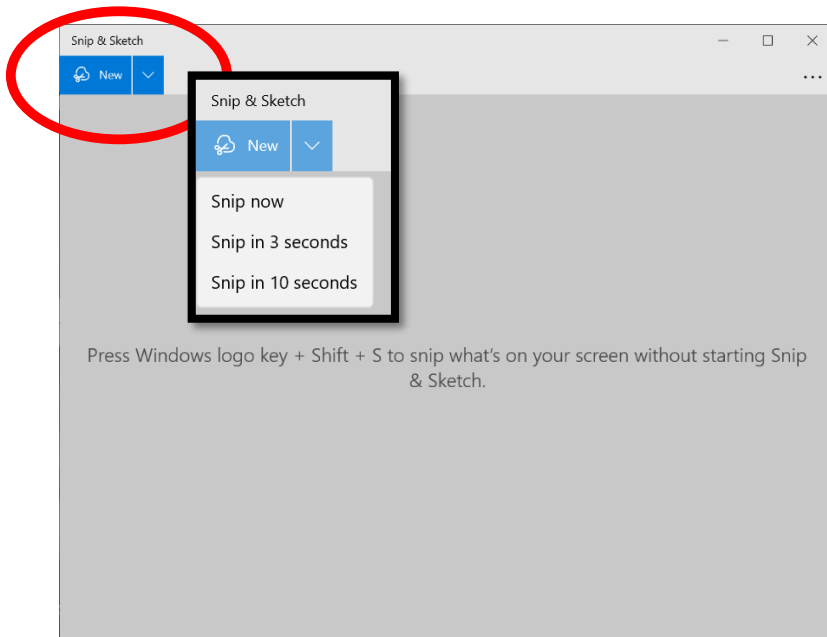
Pin to Start

More

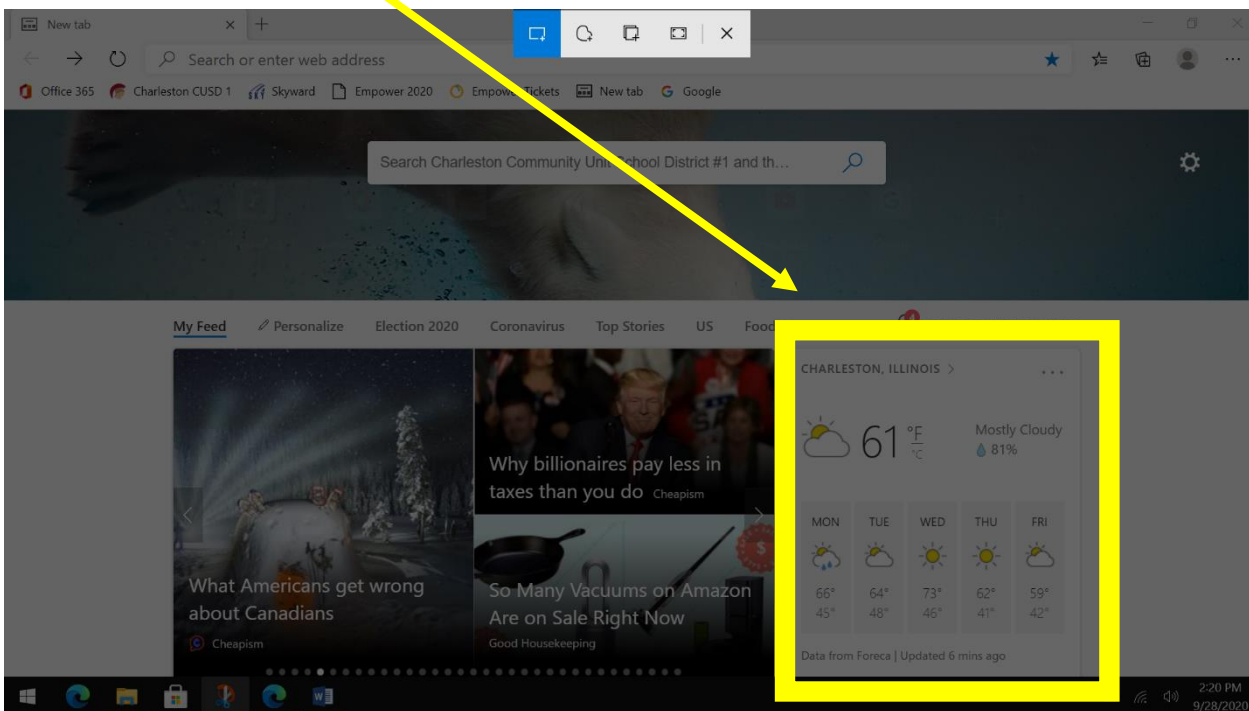


2) The Snip & Sketch app opens like this.

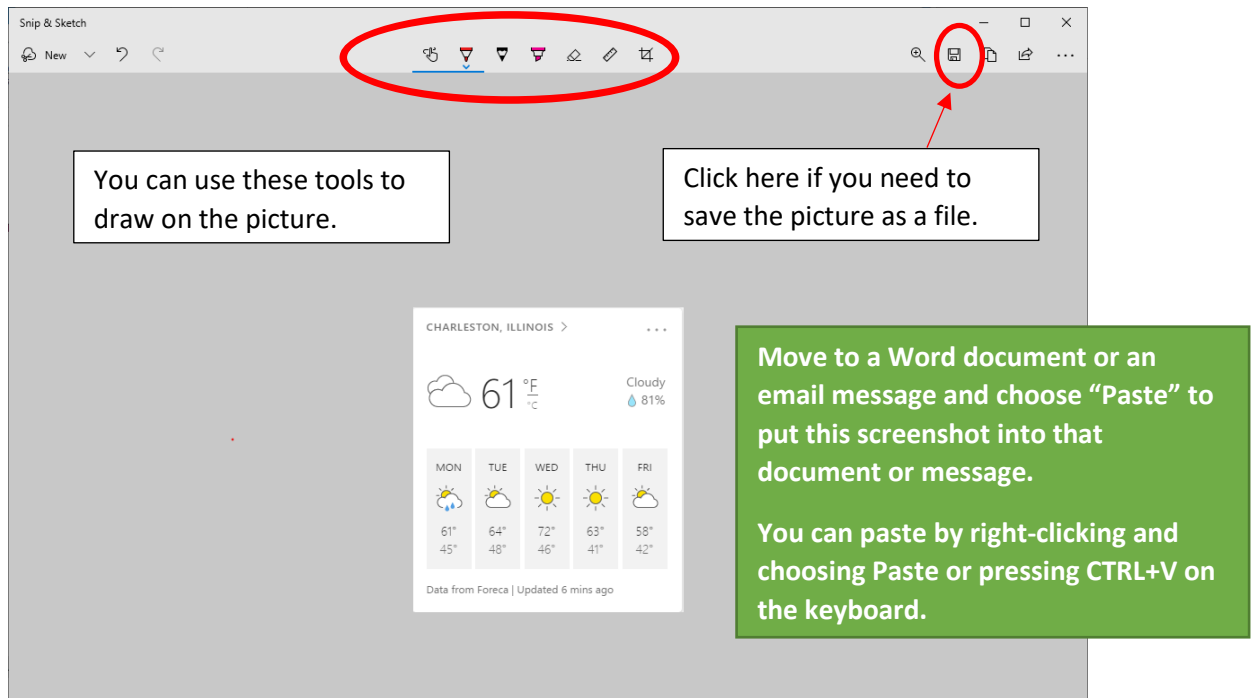
a. Click the Arrow to see options for snip now or snip after a 3 or 10 second delay.



3) Move to the window you want that you want to snip, then click and drag over the part of the window to screenshot.



4) Your snip opens in the Snip & Sketch app window.



You can program the Print Screen key on your keyboard to automatically open the Snip & Sketch app.

Click the Start button, then click the gear icon for "Settings", and then search for Print Screen and choose this option.

