	Douglas Unified School District, #27 Amendmenment #1		1132 E 12th Street Douglas, AZ 85607
	RFQ: 20-005-21 PROJECT: Select Bidders for New Space at Douglas High School	Page 1 of 1	

This District is releasing this to all interested parties:

1. Attached you will find very preliminary secmatic drawings from July in pdf format in 10 pages. This document is only a general idea of part of the project. The most import factor is working with a preengineered steel building.



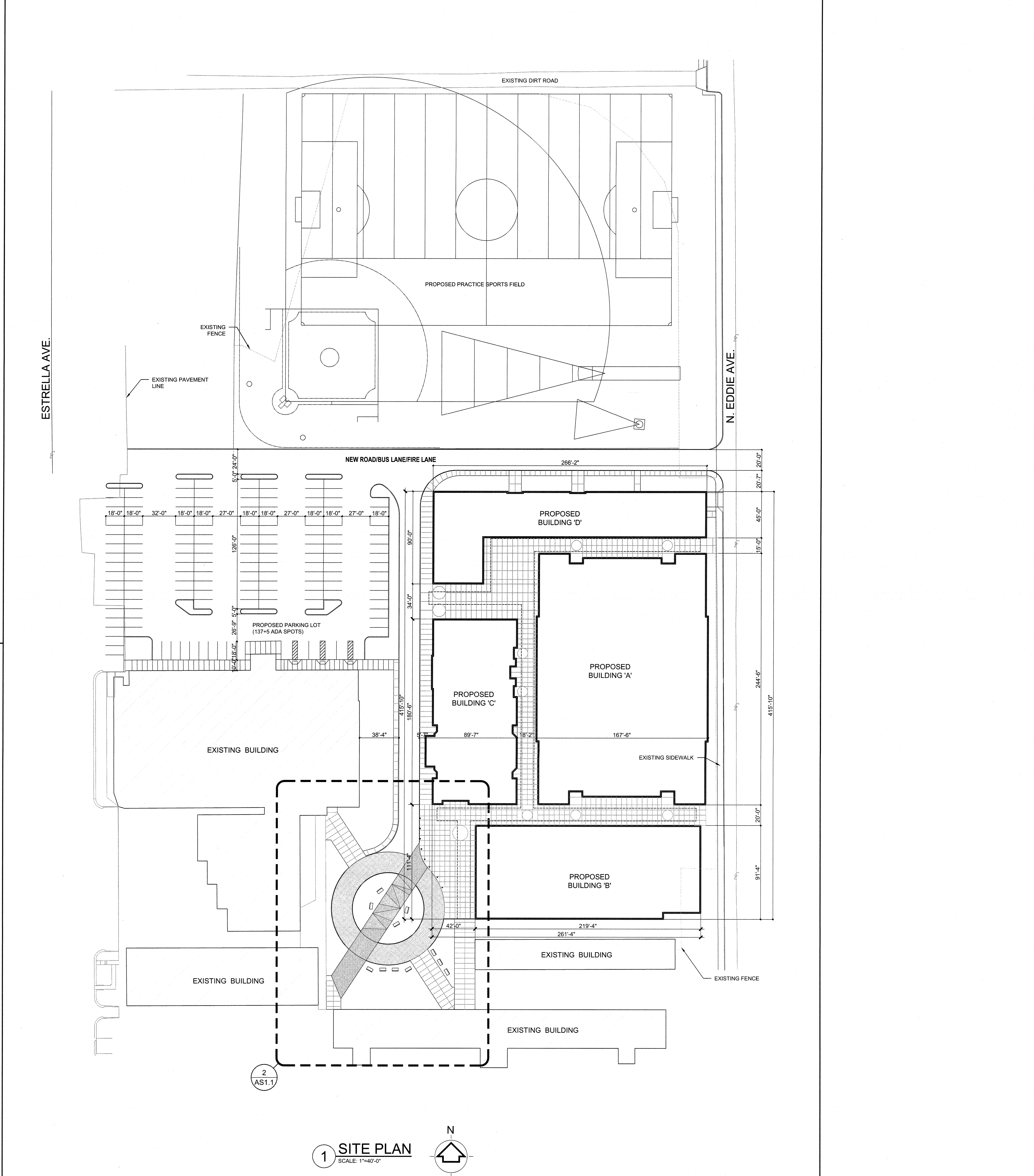
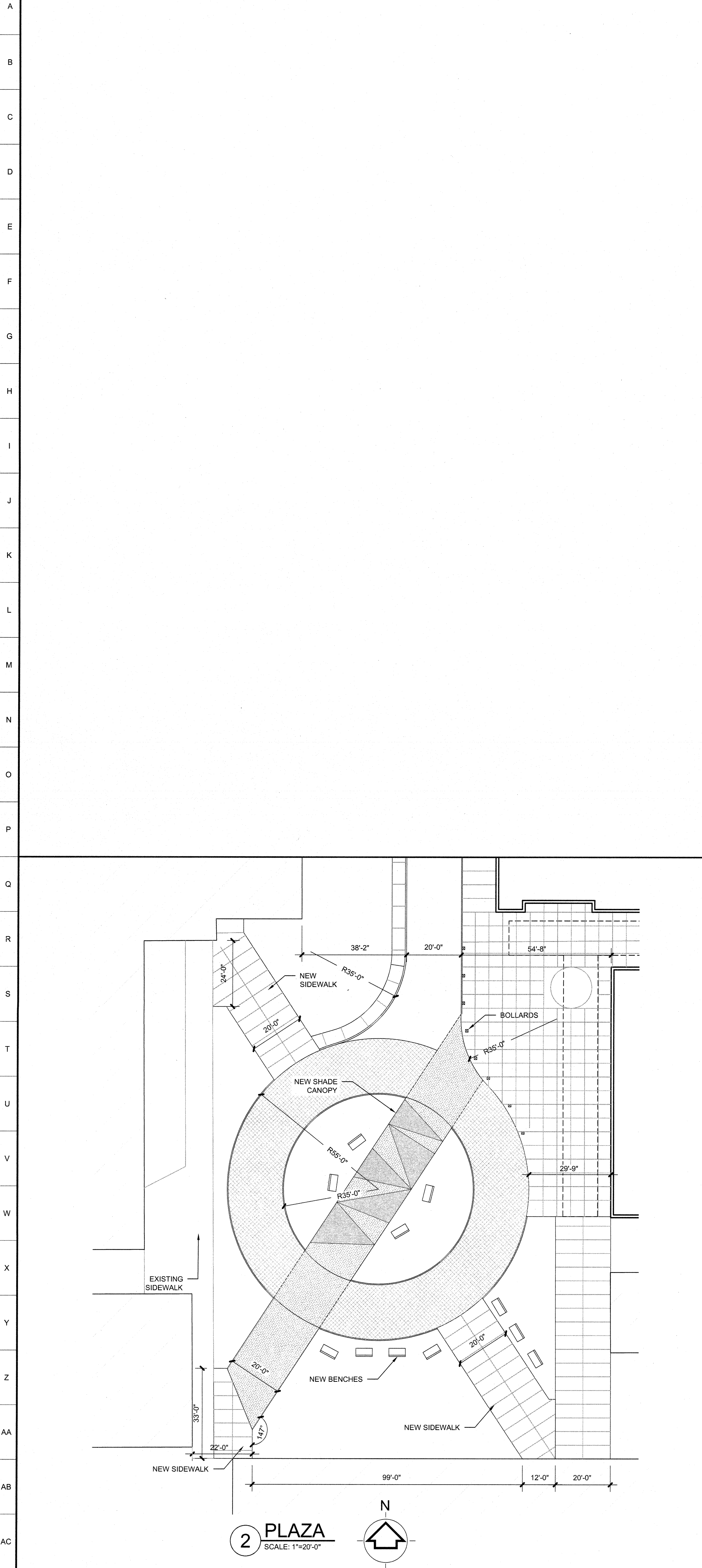
DUSD SD_s.pdf

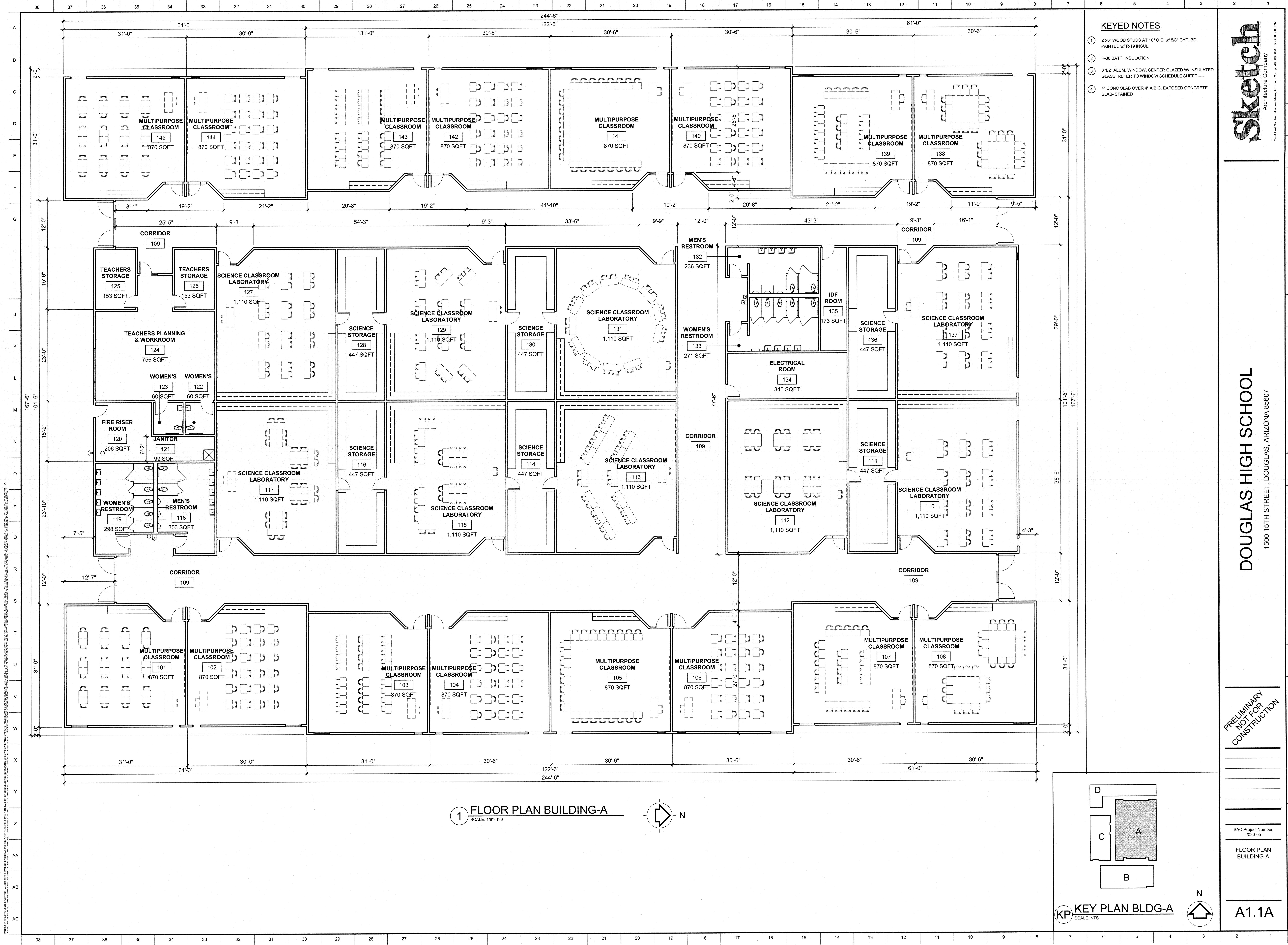
2. A portion of current space must re renovated and that is not reflected on these preliminary drawings and must not be ignored.
3. Remember to acknowledge this and any other amendments released by the District will be posted on the District website.
4. All other terms and conditions remain the same.
5. End of Amendment #1.

SHEET INDEX

G0.0

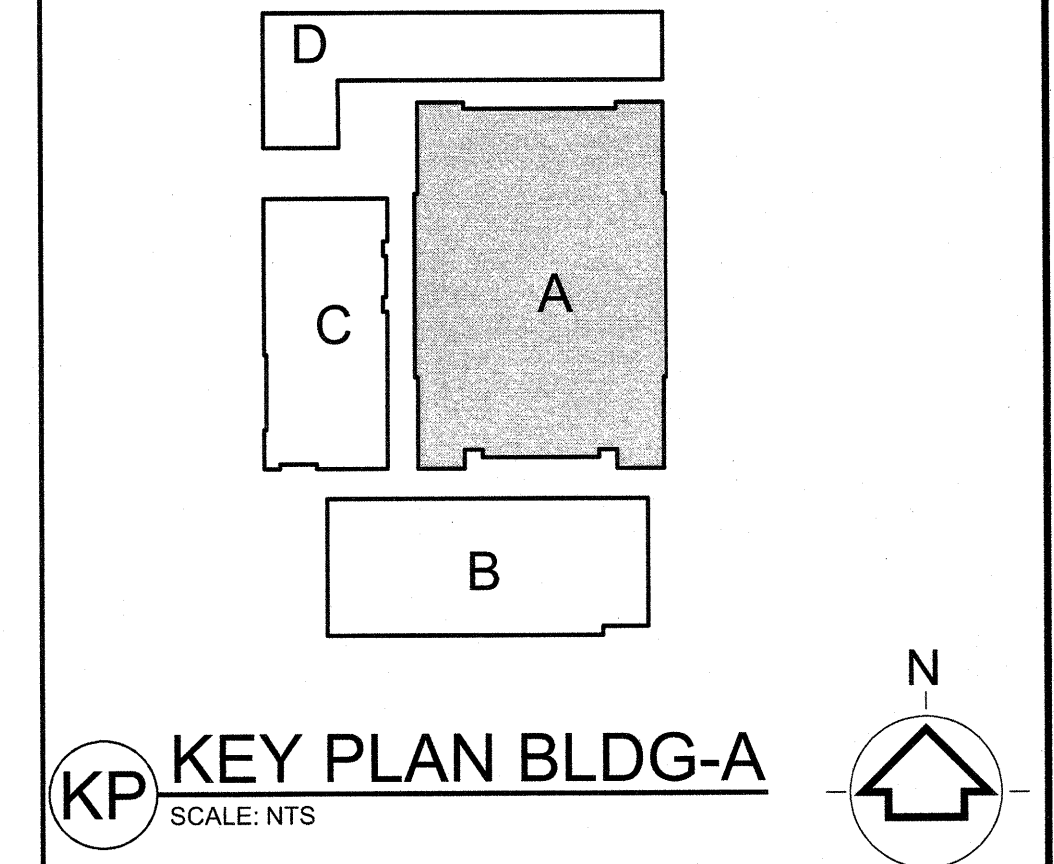
DOUGLAS HIGH SCHOOL PROJECT: 1500 15TH STREET, DOUGLAS, ARIZONA 85607. PREPARED BY: SKETCH ARCHITECTURE COMPANY. DATE: 2020-05. SCALE: 1"=20'-0".





- KEYED NOTES**
- 1 2"x6" WOOD STUDS AT 16" O.C. w/ 5/8" GYP. BD. PAINTED w/ R-19 INSUL.
 - 2 R-30 BATT. INSULATION
 - 3 3 1/2" ALUM. WINDOW, CENTER GLAZED W/ INSULATED GLASS. REFER TO WINDOW SCHEDULE SHEET ----
 - 4 4" CONC SLAB OVER 4" A.B.C. EXPOSED CONCRETE SLAB- STAINED

1 FLOOR PLAN BUILDING-A
SCALE: 1/8" = 1'-0"



Sketch
Architecture Company
2454 East Southern Avenue, Suite 100, Phoenix, AZ 85034

DOUGLAS HIGH SCHOOL
1500 15TH STREET, DOUGLAS, ARIZONA 85607

PRELIMINARY
NOT FOR
CONSTRUCTION

SAC Project Number
2020-05

FLOOR PLAN
BUILDING-A

A1.1A

A
B
C
D
E
F
G
H
I
J
K
L
M
N
O
P
Q
R
S
T
U
V
W
X
Y
Z
AA
AB
AC

38

37

36

35

34

33

32

31

30

29

28

27

26

25

24

23

22

21

20

19

18

17

16

15

14

13

12

11

10

9

8

7

6

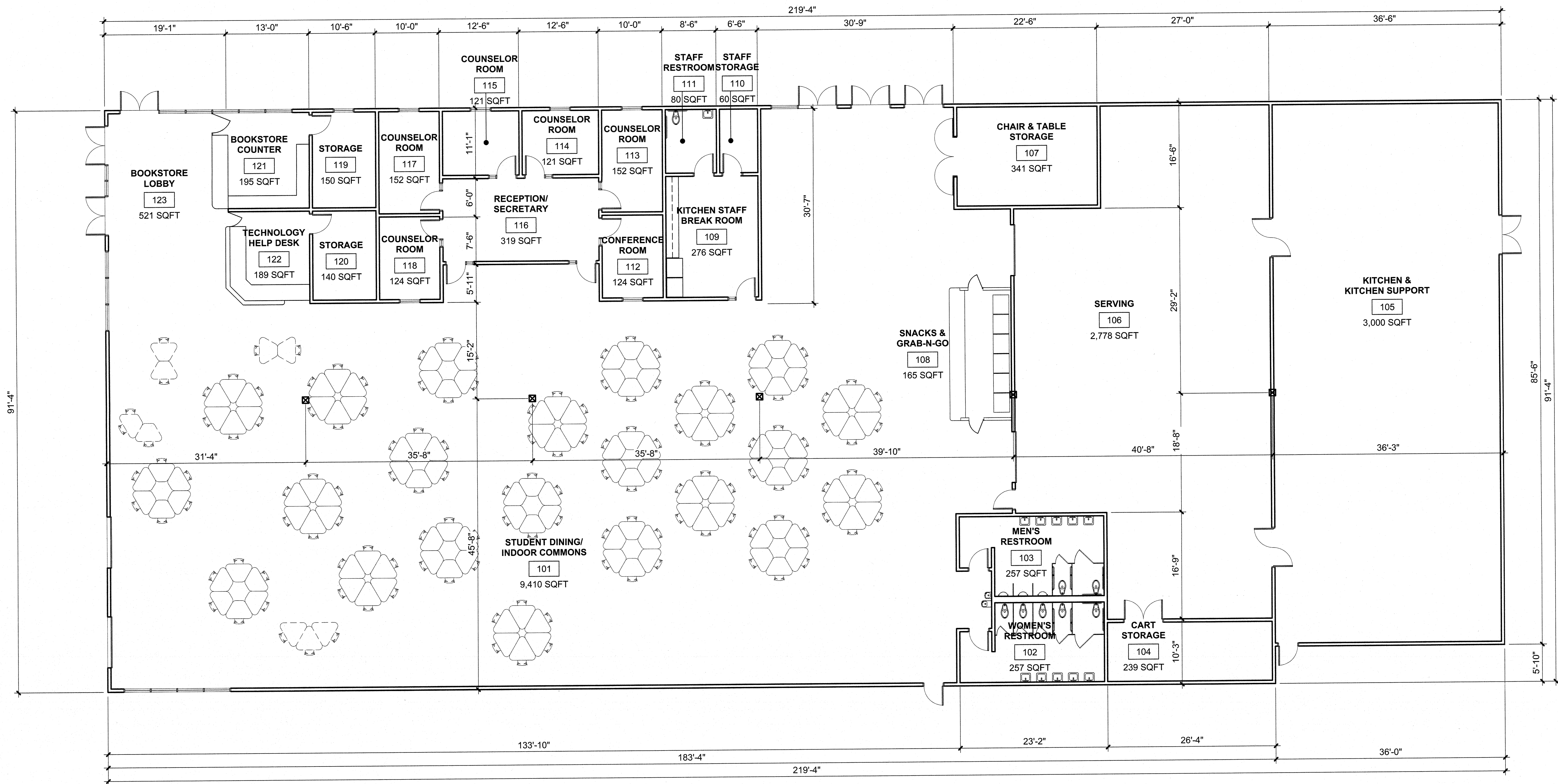
5

4

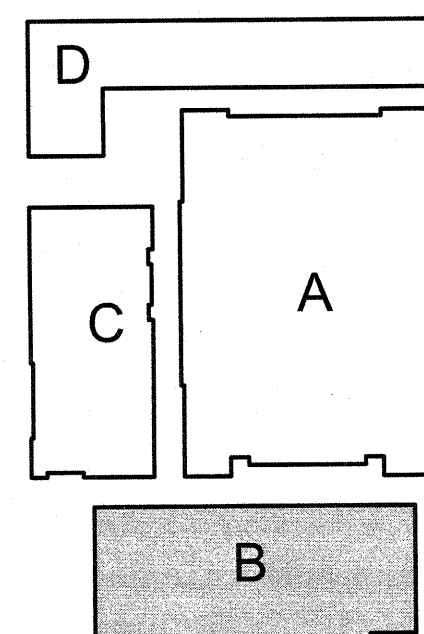
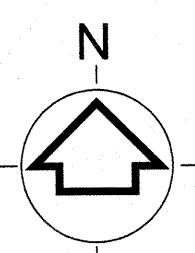
3

2

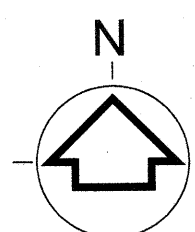
1



1 FLOOR PLAN BUILDING-B
SCALE: 1/8" = 1'-0"



KP KEY PLAN
SCALE: NTS



PRELIMINARY
NOT FOR
CONSTRUCTION

SAC Project Number
2020-05

FLOOR PLAN
AND FINISH
FLOOR AND
SCHEDULES

BUILDING-B

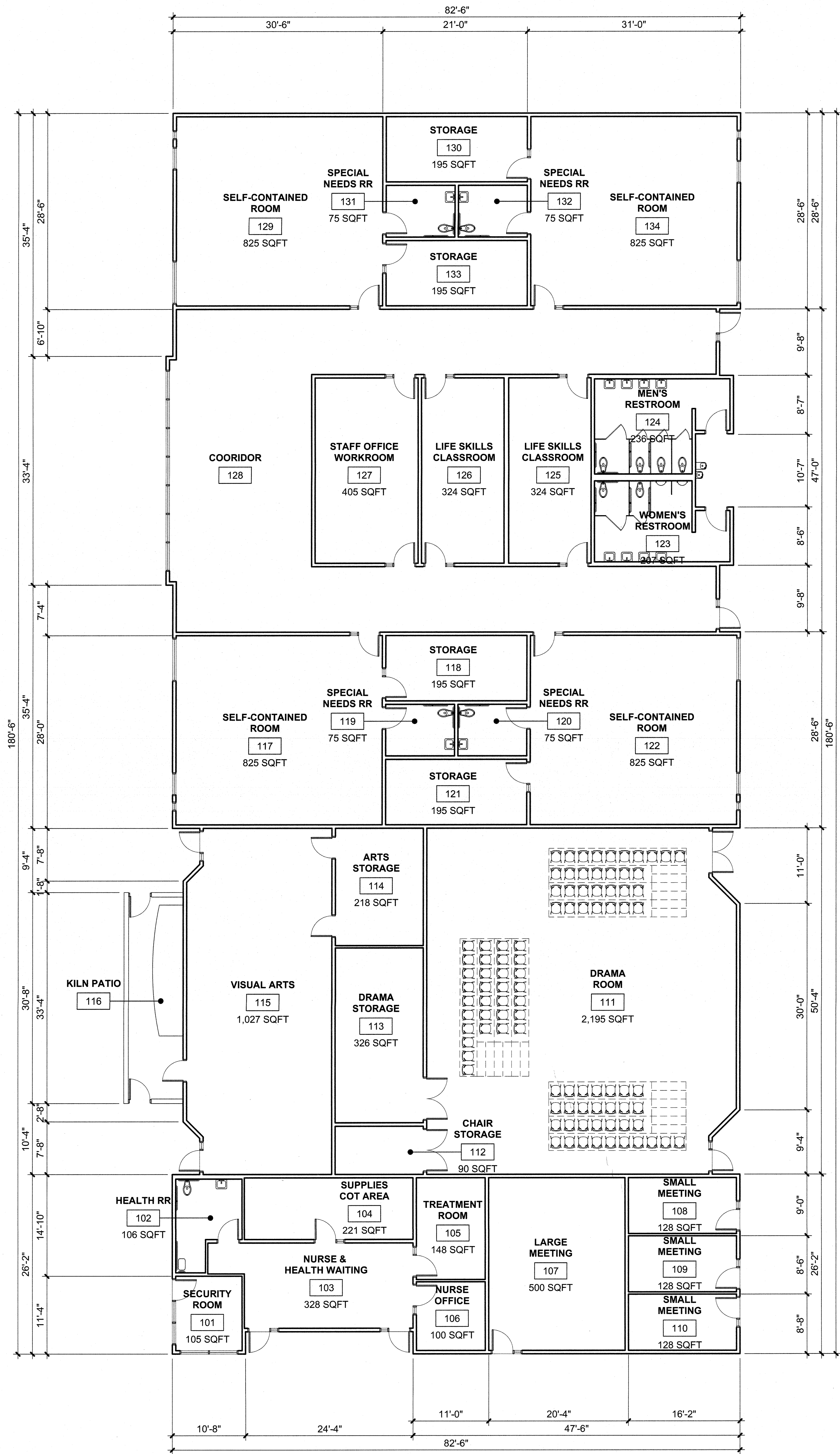
A1.1B

Sketch
Architecture Company
2444 East Southern Avenue, Mesa, Arizona 85209 Tel: 480.988.8015 Fax: 480.988.8022

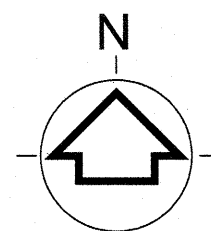
DOUGLAS HIGH SCHOOL
1500 15TH STREET, DOUGLAS, ARIZONA 85607

38 37 36 35 34 33 32 31 30 29 28 27 26 25 24 23 22 21 20 19 18 17 16 15 14 13 12 11 10 9 8 7 6 5 4 3 2 1

A B C D E F G H I J K L M N O P Q R S T U V W X Y Z AA AB AC

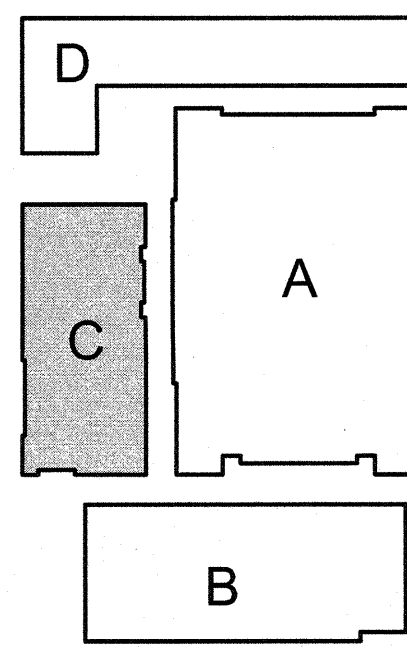


1 FLOOR PLAN BUILDING-C
SCALE: 1/8" = 1'-0"

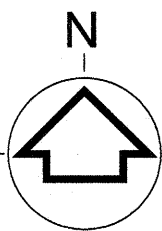


KEYED NOTES

- 2"x6" WOOD STUDS AT 16" O.C. w/ 5/8" GYP. BD. PAINTED w/ R-19 INSUL.
- 3 1/2" ALUM. WINDOW, CENTER GLAZED w/ INSULATED GLASS. REFER TO WINDOW SCHEDULE SHEET ----
- 4" CONC SLAB OVER 4" A.B.C. EXPOSED CONCRETE SLAB- STAINED



KP KEY PLAN
SCALE: NTS



DOUGLAS HIGH SCHOOL
1500 15TH STREET, DOUGLAS, ARIZONA 85607

PRELIMINARY
NOT FOR
CONSTRUCTION

SAC Project Number
2020-05

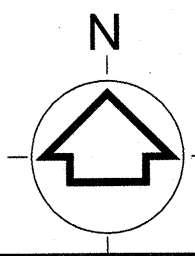
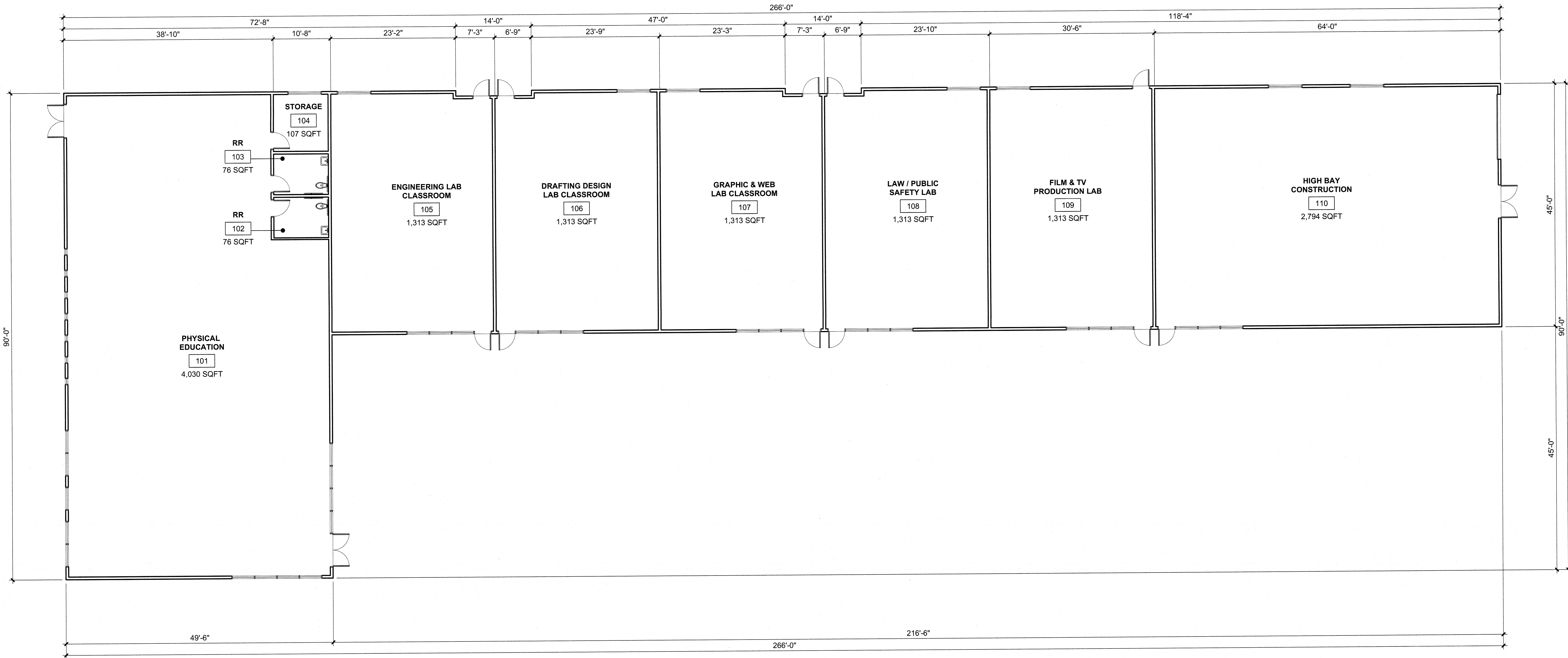
FLOOR PLAN
AND FINISH
FLOOR AND
SCHEDULES
BUILDING-C

A1.1C

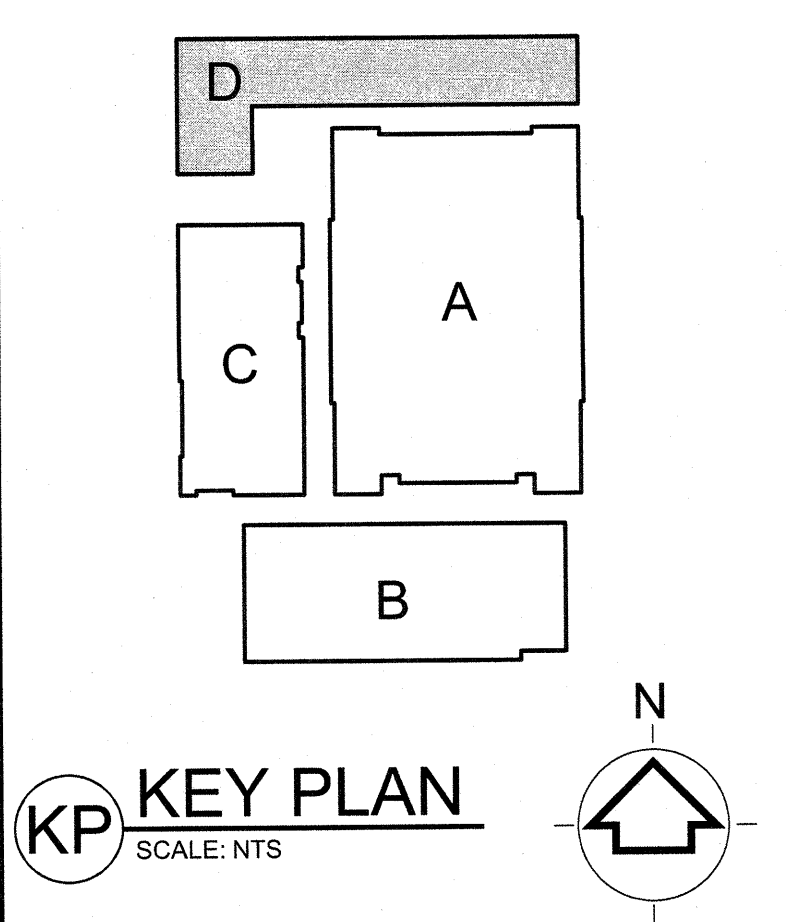
Sketch
Architecture Company
2454 East Southern Avenue, Mesa, Arizona 85205 ph 480.888.8915 fax 480.688.8032

38 37 36 35 34 33 32 31 30 29 28 27 26 25 24 23 22 21 20 19 18 17 16 15 14 13 12 11 10 9 8 7 6 5 4 3 2 1

A B C D E F G H I J K L M N O P Q R S T U V W X Y Z AA AB AC



- KEYED NOTES**
- ① 2"x8" WOOD STUDS AT 16" O.C. w/ 5/8" GYP. BD. PAINTED w/ R-19 INSUL.
 - ② 3 1/2" ALUM. WINDOW, CENTER GLAZED W/ INSULATED GLASS. REFER TO WINDOW SCHEDULE SHEET ----
 - ③ 4" CONC SLAB OVER 4" A.B.C. EXPOSED CONCRETE SLAB- STAINED

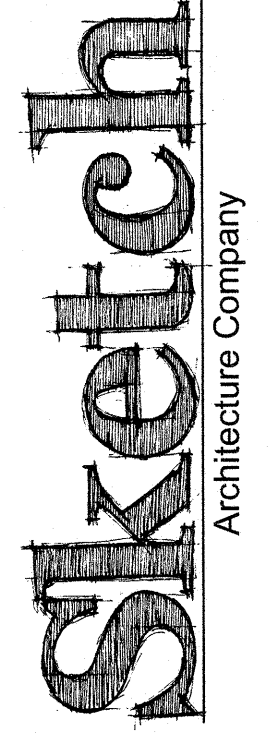


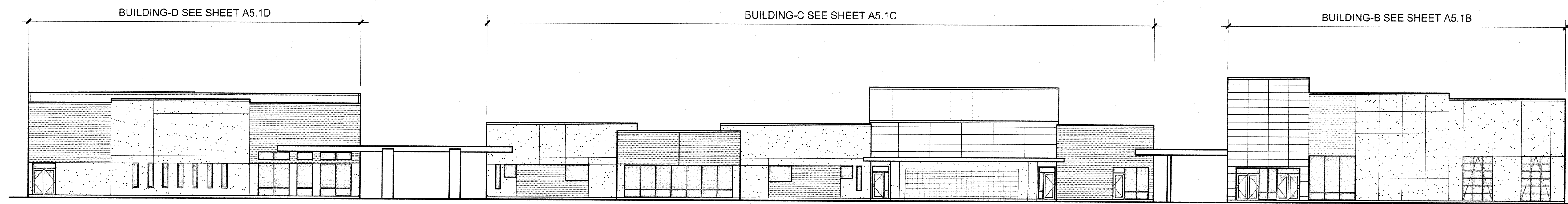
DOUGLAS HIGH SCHOOL
1500 15TH STREET, DOUGLAS, ARIZONA 85607

SAC Project Number
2020-05

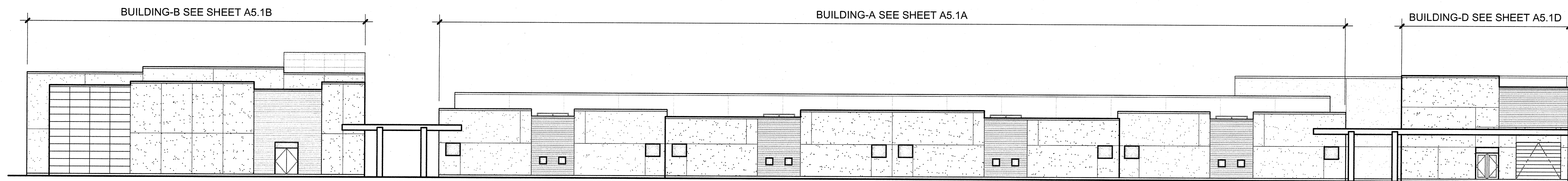
FLOOR PLAN
AND ROOM FINISH
AND SCHEDULES
BUILDING-D

A1.1D

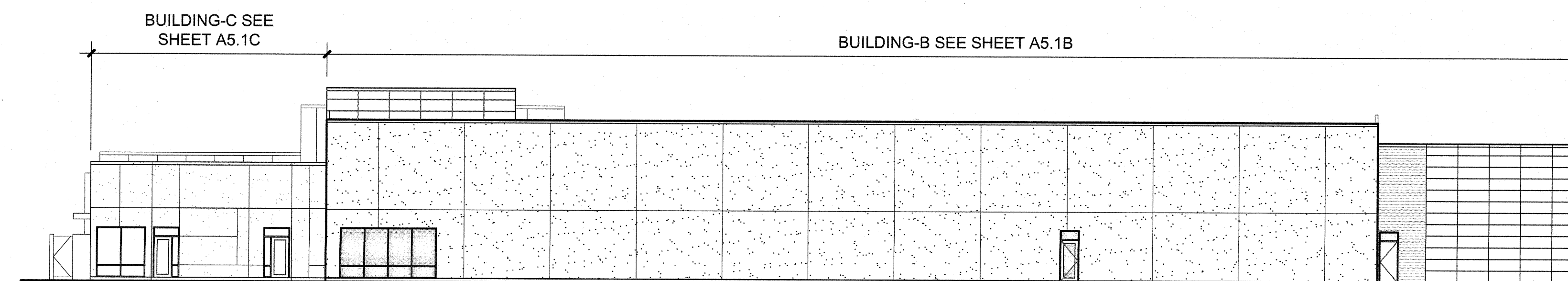




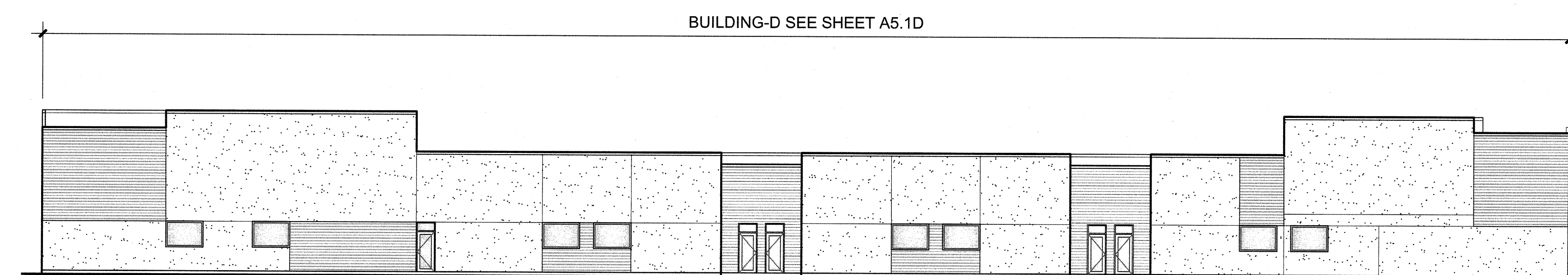
1 WEST OVERALL EXTERIOR ELEVATION
SCALE: 1/16" = 1'-0"



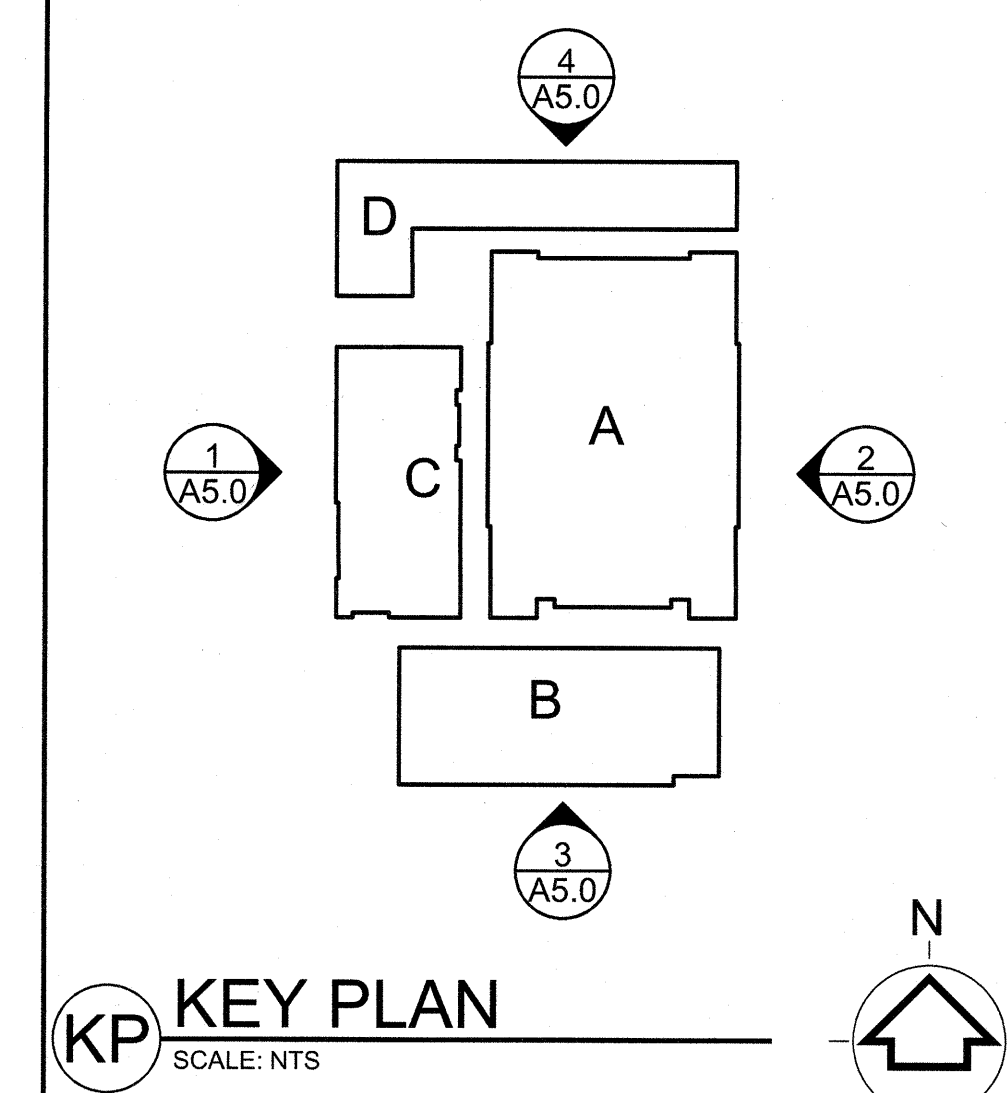
2 EAST OVERALL EXTERIOR ELEVATION



3 SOUTH OVERALL EXTERIOR ELEVATION



4 NORTH OVERALL EXTERIOR ELEVATION



Sketch
Architecture Company

2454 East Southern Avenue, Mesa, Arizona 85205 ph: 480.668.8015 fax: 480.668.8032

DOUGLAS HIGH SCHOOL
1500 15TH STREET, DOUGLAS, ARIZONA 85607

PRELIMINARY
NOT FOR
CONSTRUCTION

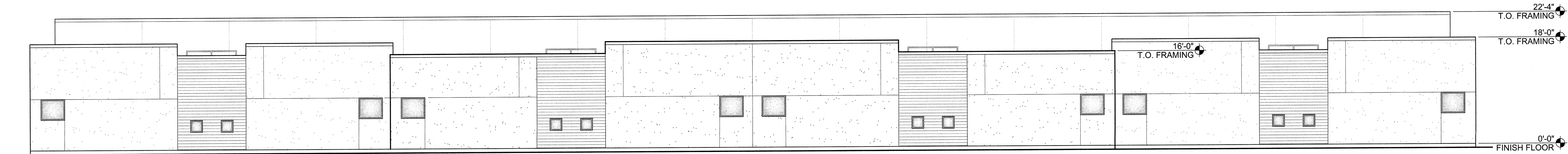
SAC Project Number
2020-05

OVERALL
EXTERIOR
ELEVATIONS

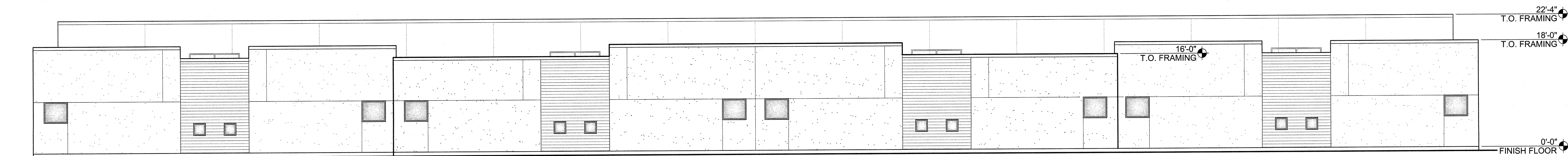
A5.0

38 37 36 35 34 33 32 31 30 29 28 27 26 25 24 23 22 21 20 19 18 17 16 15 14 13 12 11 10 9 8 7 6 5 4 3 2 1

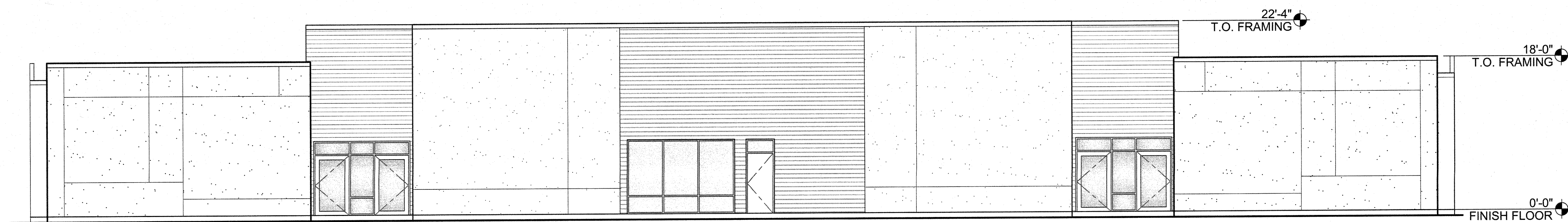
A B C D E F G H I J K L M N O P Q R S T U V W X Y Z AA AB AC



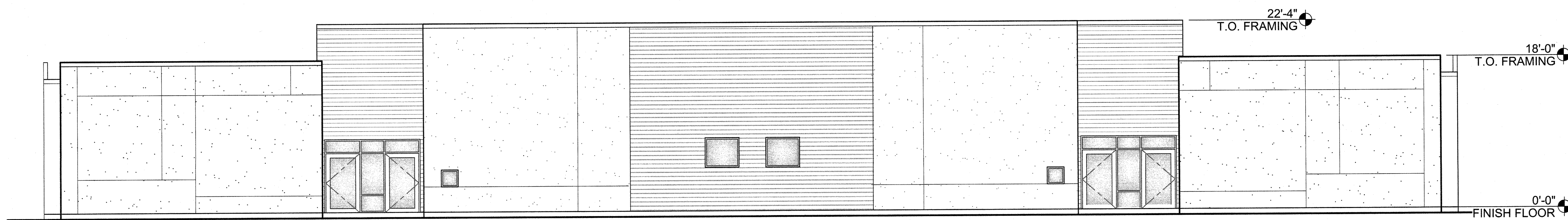
1 WEST EXTERIOR ELEVATION BUILDING-A
SCALE: 1/8" = 1'-0"
(SIDEWALK & COVERED WALKWAY NOT SHOWN FOR CLARITY)



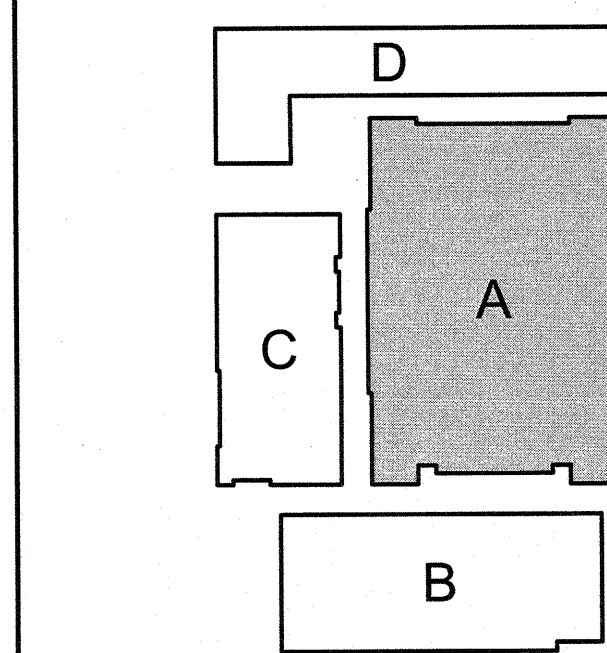
2 EAST EXTERIOR ELEVATION BUILDING-A
SCALE: 1/8" = 1'-0"
(SIDEWALK & COVERED WALKWAY NOT SHOWN FOR CLARITY)



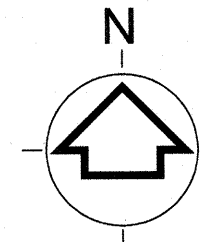
3 SOUTH EXTERIOR ELEVATION BUILDING-A
SCALE: 1/8" = 1'-0"
(SIDEWALK & COVERED WALKWAY NOT SHOWN FOR CLARITY)



4 NORTHEXTERIOR ELEVATION BUILDING-A
SCALE: 1/8" = 1'-0"
(SIDEWALK & COVERED WALKWAY NOT SHOWN FOR CLARITY)



KEY PLAN
SCALE: NTS



Sketch
Architecture Company
204 East Southern Avenue, Suite 800, Phoenix, Arizona 85001
PH: 480.688.8515 FAX: 480.688.8532

DOUGLAS HIGH SCHOOL
1500 15TH STREET, DOUGLAS, ARIZONA 85607

**PRELIMINARY
NOT FOR
CONSTRUCTION**

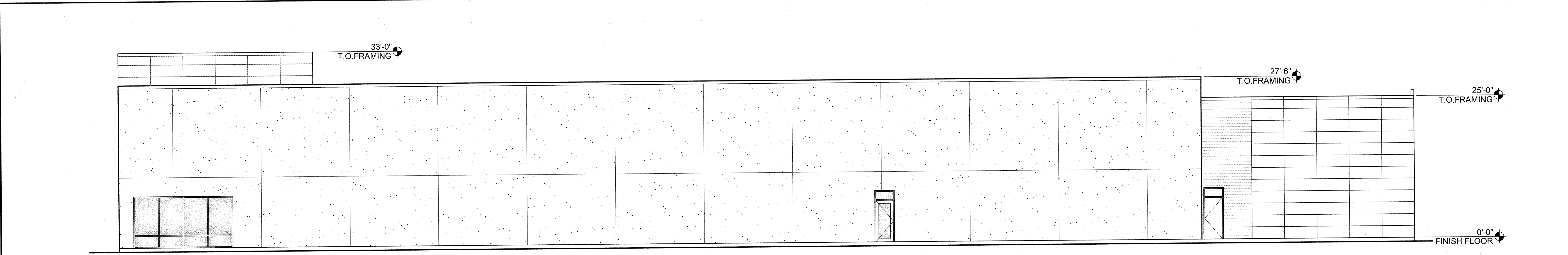
SAC Project Number
2020-05
**EXTERIOR
ELEVATIONS
BUILDING-A**

A5.1A

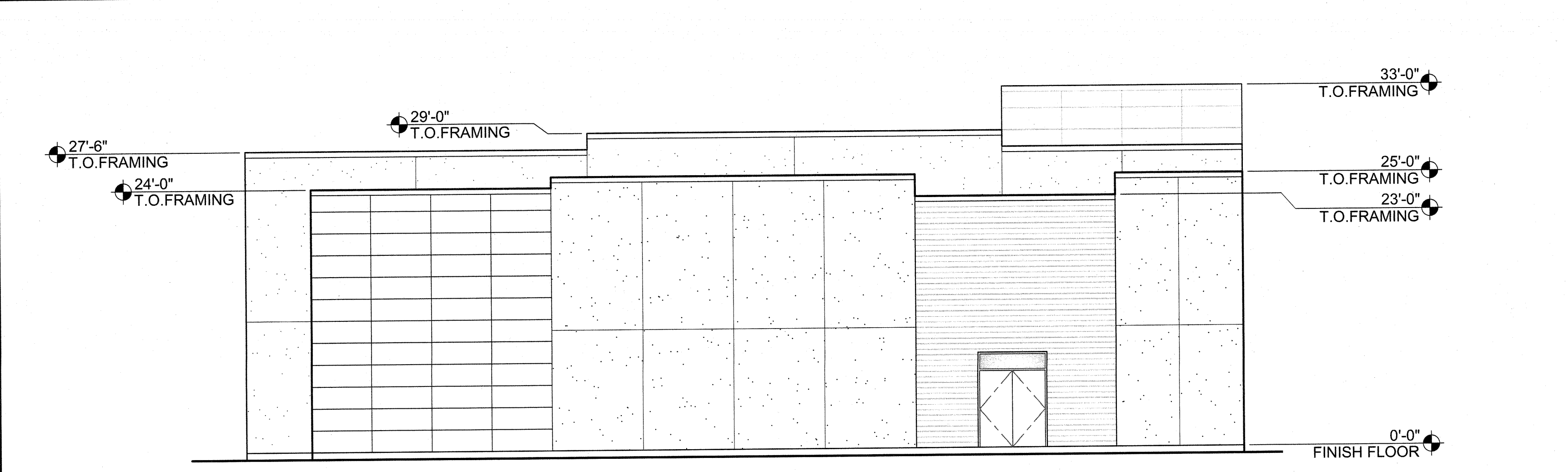
A
B
C
D
E
F
G
H
I
J
K
L
M
N
O
P
Q
R
S
T
U
V
W
X
Y
Z
AA
AB
AC



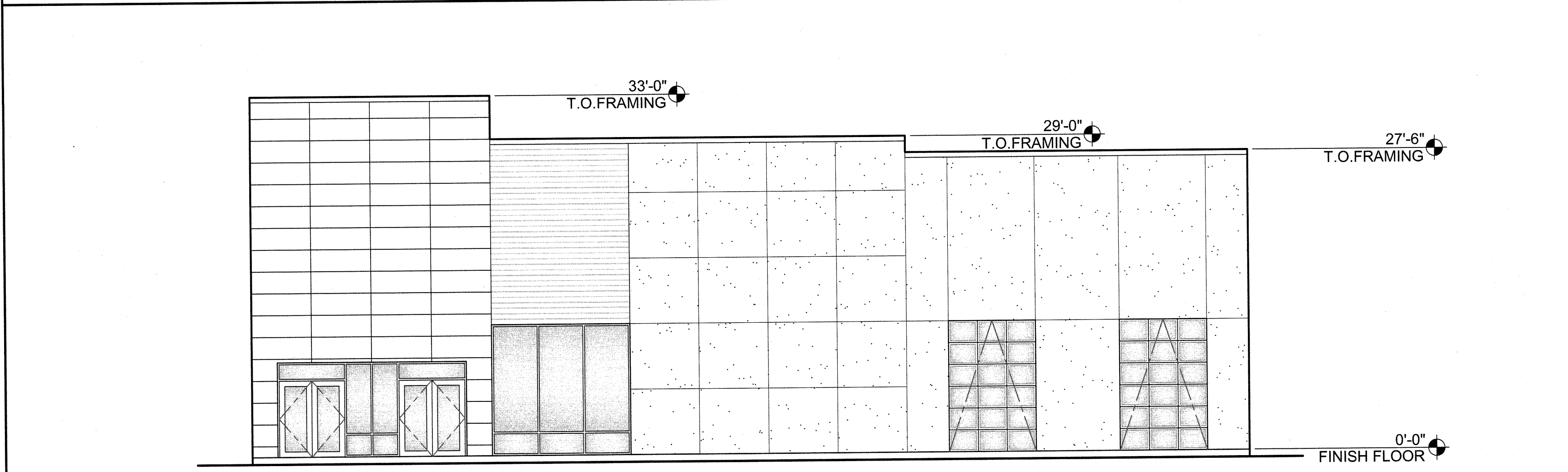
1 NORTH EXTERIOR ELEVATION BUILDING-B
SCALE: 1/8" = 1'-0"
(SIDEWALK & COVERED WALKWAY NOT SHOWN FOR CLARITY)



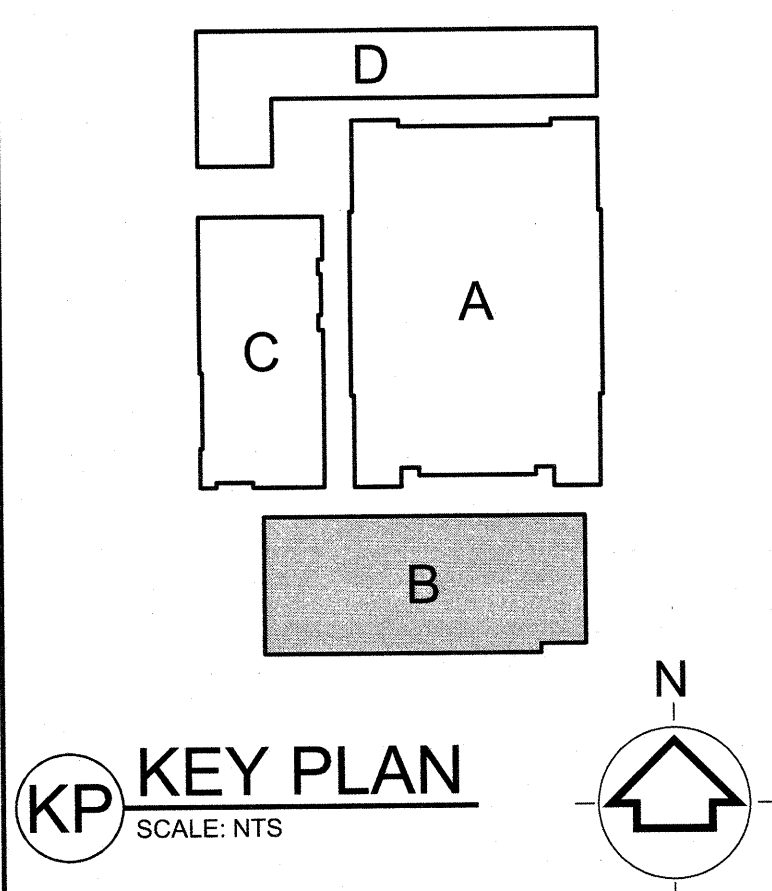
2 SOUTH EXTERIOR ELEVATION BUILDING-B
SCALE: 1/8" = 1'-0"
(SIDEWALK & COVERED WALKWAY NOT SHOWN FOR CLARITY)



3 EAST EXTERIOR ELEVATION BUILDING-B
SCALE: 1/8" = 1'-0"
(SIDEWALK & COVERED WALKWAY NOT SHOWN FOR CLARITY)



4 WEST EXTERIOR ELEVATION BUILDING-B
SCALE: 1/8" = 1'-0"
(SIDEWALK & COVERED WALKWAY NOT SHOWN FOR CLARITY)



1500 15TH STREET, DOUGLAS, ARIZONA 85607

A5.1C

