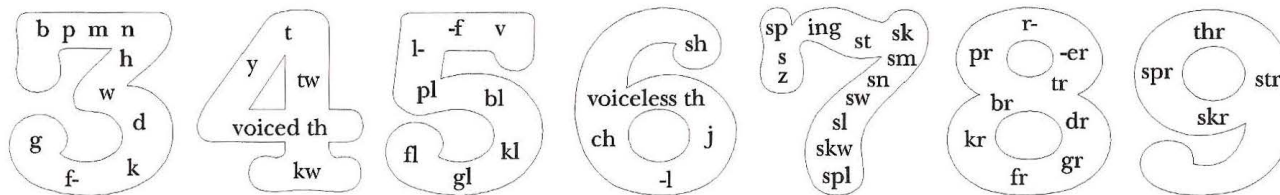


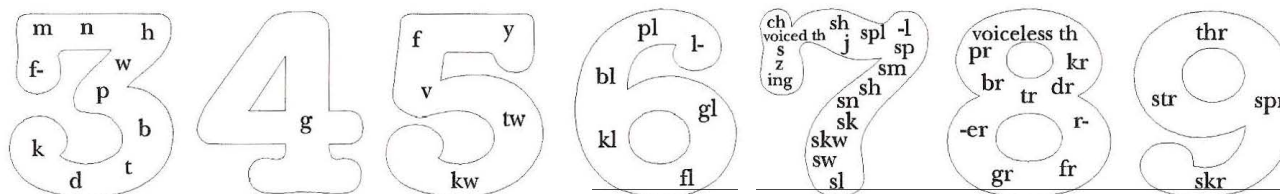
SOUND CHART



FEMALE

This chart show at what age females should be using correctly articulated consonant sounds. The age norms were established as part of the Nebraska-Iowa Articulation Norms Project. Vowel sounds are currently considered intact by age three (3).

SOUND CHART



MALE

This chart show at what age males should be using correctly articulated consonant sounds. The age norms were established as part of the Nebraska-Iowa Articulation Norms Project. Vowel sounds are currently considered intact by age three (3).