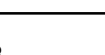


ROOFTOP PACKAGED UNIT SCHEDULE (EXISTING)

TYPE #	MANUFACTURER MODEL #	NOMINAL CFM	NOMINAL COOLING MBH	GAS INPUT MBH	ELECTRICAL DATA		WEIGHT (LBS)	DISCHARGE CONFIGURATION	REMOVE PRESERVE	REMARKS
					V/Ø/H	MOCF				
RTU 1	TRANE 4YCC3048A4075AB	1600	48.0	75.0	460/3/60	15	517	VERTICAL	REMOVE	1, 2
RTU 2	TRANE 4YCC3048A4075AB	1600	48.0	75.0	460/3/60	15	517	VERTICAL	REMOVE	1, 2
RTU 3	TRANE 4YCC3048A4075AB	1600	48.0	75.0	460/3/60	15	517	HORIZONTAL	REMOVE	1, 2
RTU 4	DAY & NIGHT 588ANW060100AAAG	2000	60.0	100.0	208-230/1/60	60	489	HORIZONTAL	REMOVE	1, 2
RTU 5	BRYANT 582AEW060090NAAG	2000	60.0	90.0	460/3/60	20	450	HORIZONTAL	REMOVE	1, 2
RTU 6	TRANE 4YCC3048A4075AB	1600	48.0	75.0	460/3/60	15	517	HORIZONTAL	REMOVE	1, 2
RTU 7	BRYANT 577CEW060090NA--	2000	60.0	90.0	460/3/60	20	523	VERTICAL	PRESERVE (EXISTING TO REMAIN)	3
RTU 8	RHEEM RRGG-07E49DLR	1600	48.0	75.0	460/3/60	20	509	VERTICAL	REMOVE	1, 2
RTU 9	RHEEM RRGG-05N31JKR	1000	30.0	50.0	208-230/1/60	30	388	VERTICAL	REMOVE	1, 2
RTU 10	RHEEM RRGG-07E49DLR	1600	48.0	75.0	460/3/60	20	509	VERTICAL	REMOVE	1, 2
RTU 11	RHEEM RRGG-05N18JKR	600	18.0	50.0	208-230/1/60	25	329	VERTICAL	REMOVE	1, 2
RTU 12	RHEEM RRGG-07E49DLR	1600	48.0	75.0	460/3/60	20	509	VERTICAL	REMOVE	1, 2
RTU 13	RHEEM RRGG-07E49DLR	1600	48.0	75.0	460/3/60	20	509	VERTICAL	REMOVE	1, 2
RTU 14	RHEEM RRGG-07E49DLR	1600	48.0	75.0	460/3/60	20	509	VERTICAL	REMOVE	1, 2
RTU 15	RHEEM RRGG-07E49DLR	1600	48.0	75.0	460/3/60	20	509	VERTICAL	REMOVE	1, 2
RTU 16	CARRIER 48TCDA07AZA6A0A0A0	2400	70.0	72.0	460/3/60	25	652	VERTICAL	REMOVE	1, 2

- REMARKS:
- MECHANICAL UNIT WEIGHT LISTED IS THE BASE WEIGHT ONLY FROM MANUFACTURE'S LITERATURE AND NOT INCLUSIVE OF ROOF CURB, ECONOMIZER, WEATHER HOODS, OR OTHER EQUIPMENT ADD ON OPTIONS. AS A MEANS TO PROVIDE A BASIS OF COMPARISON BETWEEN REMOVED AND NEW UNIT'S WEIGHT.
 - REMOVE UNIT FROM ROOF AND DISCARD.
 - PRESERVE EXISTING FOR REUSE AND PERFORM HVAC SERVICE CHECK TO CONFIRM SATISFACTORY OPERATION.

ROOFTOP PACKAGED UNIT SCHEDULE (NEW)

TYPE #	MANUFACTURER MODEL #	H/I/O CFM	ESP (INCHES W.C.)	SUPPLY FAN (BHP)	COOLING (MBH)		EER/SEER	HEATING (MBH)		AFUE	ELECTRICAL DATA				WEIGHT	DISCHARGE CONFIGURATION	ELECTRONIC AIR CLEANER	ROOF CURB ADAPTER	REMARKS
					TC	SC		INPUT HI/LO	OUTPUT HI/LO		V/O/H	FLA	MCA	MOCF					
RTU 1	CARRIER 48VILNC480906	1600	0.50	0.27	42.85	38.87	- /14	90	74	81	460/3/60	-	12.3	15	438	VERTICAL	EAC 1	RCA 1	1, 2, 3, 4, 6, 10, 13
RTU 2	CARRIER 48VILNC480906	1600	0.50	0.27	42.85	38.87	- /14	90	74	81	460/3/60	-	12.3	15	438	VERTICAL	EAC 1	RCA 1	1, 2, 3, 4, 6, 10, 13
RTU 3	CARRIER 48VILNC480906	1600	0.50	0.27	42.85	38.87	- /14	90	74	81	460/3/60	-	12.3	15	438	HORIZONTAL	EAC 1	RCA 5	1, 2, 3, 4, 6, 10, 13
RTU 4	CARRIER 48VLNE600903-TP	2000	0.50	1.03	53.92	47.92	- /14	90	74	81	208-1-60	-	38.3	60	455	HORIZONTAL	EAC 1	RCA 5	1, 2, 3, 4, 7, 10, 12, 13
RTU 5	CARRIER 48VILNC600906	2000	0.50	1.00	53.65	47.32	- /14	90	74	81	460/3/60	-	13.4	20	455	HORIZONTAL	EAC 1	RCA 5	1, 2, 3, 4, 7, 10, 12, 13
RTU 6	CARRIER 48VILNC480906	1600	0.50	0.27	42.85	38.87	- /14	90	74	81	460/3/60	-	12.3	15	438	HORIZONTAL	EAC 1	RCA 5	1, 2, 3, 4, 6, 10, 13
RTU 7	EXISTING TO REMAIN															VERTICAL	EAC 1		4, 9, 13
RTU 8	CARRIER 48VILNC480906	1600	0.50	0.27	42.85	38.87	- /14	90	74	81	460/3/60	-	12.3	15	438	VERTICAL	EAC 1	RCA 2	1, 2, 3, 4, 6, 10, 13
RTU 9	CARRIER 48VLNE300403	1000	0.50	0.24	28.83	24.13	- /14	40	33	81	208-1-60	-	21.4	30	336	VERTICAL	EAC 1	RCA 3	1, 2, 3, 4, 8, 10, 13
RTU 10	CARRIER 48VILNC480906	1600	0.50	0.27	42.85	38.87	- /14	90	74	81	460/3/60	-	12.3	15	438	VERTICAL	EAC 1	RCA 2	1, 2, 3, 4, 6, 10, 13
RTU 11	CARRIER 48VLNE240403-TP	800	0.50	0.14	24.30	18.34	- /14	40	33	81	208-1-60	-	15.2	20	304	VERTICAL	EAC 1	RCA 4	1, 2, 3, 4, 8, 10, 13
RTU 12	CARRIER 48VILNC480906	1600	0.50	0.27	42.85	38.87	- /14	90	74	81	460/3/60	-	12.3	15	438	VERTICAL	EAC 1	RCA 2	1, 2, 3, 4, 6, 10, 13
RTU 13	CARRIER 48VILNC480906	1600	0.50	0.27	42.85	38.87	- /14	90	74	81	460/3/60	-	12.3	15	438	VERTICAL	EAC 1	RCA 2	1, 2, 3, 4, 6, 10, 13
RTU 14	CARRIER 48VILNC480906	1600	0.50	0.27	42.85	38.87	- /14	90	74	81	460/3/60	-	12.3	15	438	VERTICAL	EAC 1	RCA 2	1, 2, 3, 4, 6, 10, 13
RTU 15	CARRIER 48VILNC480906	1600	0.50	0.27	42.85	38.87	- /14	90	74	81	460/3/60	-	12.3	15	438	VERTICAL	EAC 1	RCA 2	1, 2, 3, 4, 6, 10, 13
RTU 16	CARRIER 48FCDM07A3A6-0A0A0	2400	1.0	1.65	72.42	55.62	11 / -	67	54	81	460/3/60	-	15	20	612	VERTICAL	EAC 2	SEE REMARKS	1, 2, 3, 4, 5, 11, 12, 13

- REMARKS:
- DISCONNECT SWITCH IN NEMA-3R HOUSING
 - LOW NOx UNIT
 - MERV-13 FILTER
 - VENSTAR MODEL T8850 THERMOSTAT (STANDALONE, T24 COMPLIANT, 7 DAY PROGRAMMABLE)
 - NO ADAPTER CURB REQUIRED - UNIT IS DIRECT REPLACEMENT OF EXISTING MODEL (CONTRACTOR TO VIF)
 - PROVIDE WITH OUTSIDE AIR MANUAL HOOD - MICROMETL OAM-SDLGS-CD
 - PROVIDE WITH ECONOMIZER AND BAROMETRIC RELIEF HOOD - MICROMETL ECC-SPPLGCA-D"B" - INCLUSIVE OF DRY BULB SENSOR, BELIMO ACTUATOR AND JADE LOGIC CONTROLLER PACKAGE
 - PROVIDE WITH OUTSIDE AIR MANUAL HOOD - MICROMETL OAM-SDSML-CD
 - UNIT TO REMAIN - RETROFIT WITH EAC-1 PURIFIER MODULE AND INSTALL PER MNFR'S RECOMMENDATIONS.
 - ADAPTER CURB, SEE SCHEDULE.
 - PROVIDE WITH ECONOMIZER AND BAROMETRIC RELIEF HOOD, INCLUSIVE OF DRY BULB SENSOR, BELIMO ACTUATOR AND JADE LOGIC CONTROLLER PACKAGE.
 - DUCT SMOKE DETECTOR PER 2019 CMC 608.1.
 - UVc LAMP, INTERIOR TO RTU CABINET (STERILE-AIRE OR EQUAL).

ELECTRONIC AIR PURIFIER SCHEDULE

TYPE #	MANUFACTURER MODEL #	MAX CFM	APD (INCHES W.C.)	NUMBER OF MODULES	LOCATION (APPROX.)	OUTPUT ION	LIFESPAN	ELECTRICAL DATA		WEIGHT	REMARKS
								V/Ø/H	WATTS		
EAC 1	ultraPURE ION-0A000	2000	0.0	(1) SEE ALSO REMARK #2	BLOWER INLET	NEGATIVE	15,000 HRS	115/1/60	6.9	0.50 lbs (1) MODULE	ALL
EAC 2	ultraPURE ION-0A000	4000	0.0	(2) SEE ALSO REMARK #2	BLOWER INLET	NEGATIVE	15,000 HRS	115/1/60	13.8 (TOTAL) 6.9 (EA)	1.00 LBS (2) MODULES	ALL

- REMARKS:
- INSTALL PER MANUFACTURER'S RECOMMENDATIONS AND INSTALLATION INSTRUCTIONS.
 - WHERE AIRFLOW EXCEEDS 2000 CFM, TWO EAC MODULES SHALL BE INSTALLED (SEE ALSO REMARK #1)
 - UL2998 CERTIFIED FOR ZERO OZONE EMISSION

ROOF CURB ADAPTER SCHEDULE

TYPE #	MANUFACTURER MODEL #	MATERIAL	INSULATION	GASKET	REMARKS
RCA 1	CDI CURBS 1-3041-4023	18 GA GSM	1" / 1-1/2LB (R-VALUE 3.85)	YES (PERIMETER)	1, 2
RCA 2	CDI CURBS 1-6515-4023LARGE	18 GA GSM	1" / 1-1/2LB (R-VALUE 3.85)	YES (PERIMETER)	1, 2
RCA 3	CDI CURBS 1-6505-4021LARGE	18 GA GSM	1" / 1-1/2LB (R-VALUE 3.85)	YES (PERIMETER)	1, 2
RCA 4	CDI CURBS 1-6500-4021	18 GA GSM	1" / 1-1/2LB (R-VALUE 3.85)	YES (PERIMETER)	1, 2
RCA 5	CDI CURBS CUSTOM	18 GA GSM	1" / 1-1/2LB (R-VALUE 3.85)	YES (PERIMETER)	1, 2, 3

- REMARKS:
- CONTRACTOR SHALL FIELD VERIFY EXISTING CONDITIONS - CURB OUTSIDE DIMENSIONS AND SA/RA CONFIGURATION - PRIOR TO ORDERING AND/OR INSTALLATION OF EQUIPMENT.
 - ADAPTER SHALL HAVE 3" OVERLAP FOR CONNECTION TO EXISTING CURB
 - CONTRACTOR SHALL MEASURE EXISTING PLATFORM

15000 inc.

heating, ventilation, air conditioning • plumbing design and engineering

6085 state farm dr. #130 phone: 707.577.0363
rohrnert park, ca 94928 fax: 707.577.0364
email: info@15000inc.com



WATERFORD UNIFIED
SCHOOL DISTRICT
219 N. REINWAY AVE, #2
WATERFORD, CA 95386

WATERFORD
JUNIOR HS HVAC
EQUIPMENT
MODERNIZATION

12916 BENTLY STREET
WATERFORD, CA 95386

PLAN SET INTENDED FOR PERMIT
INTAKE AND REVIEW ONLY. BIDDING,
ESTIMATING AND/OR CONSTRUCTION
OF THIS PROJECT IS NOT AUTHORIZED
BY THE MEOR UNTIL THIS NOTE IS
REMOVED FROM THE DRAWINGS.

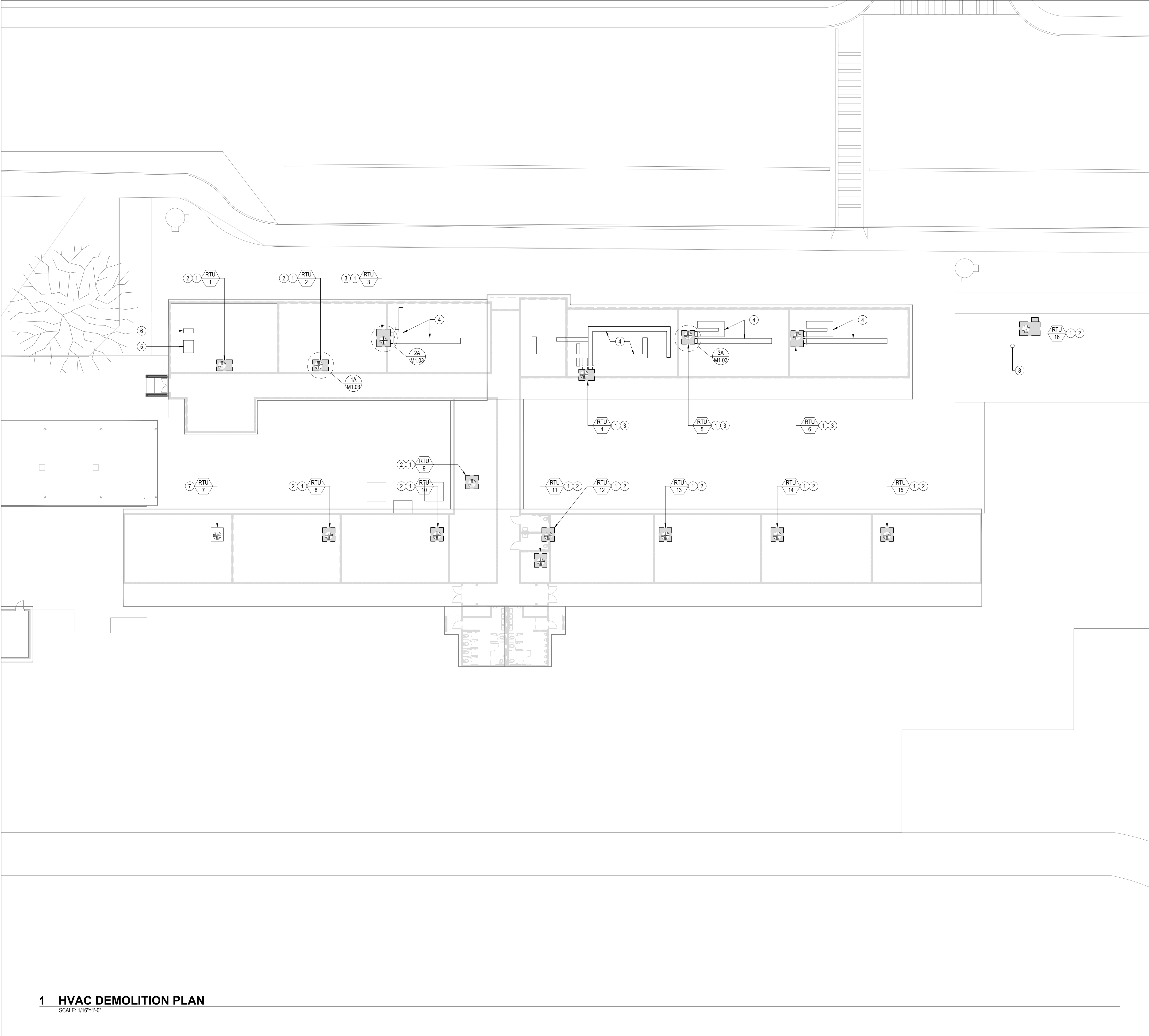
#	REVISION	DATE

HVAC SCHEDULES

ISSUE DATE	08/27/2020
ISSUE TYPE	INTAKE REVIEW
DRAWN BY	MJT
CHECKED BY	MJT/JMT
SCALE	AS NOTED
PROJECT No.	1533.00

NOT FOR CONSTRUCTION

M0.02



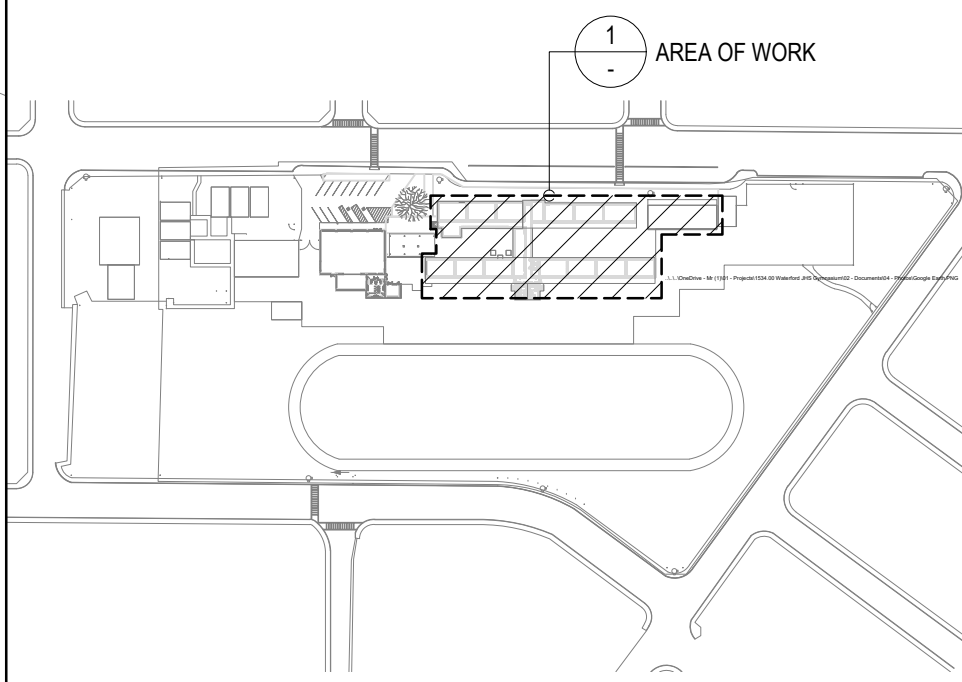
HVAC GENERAL DEMO NOTES

- (A) DASHED BOLD LINE [— — —] INDICATES WORK TO BE DEMOLISHED.
- (B) SOLID LIGHT LINE [—————] INDICATES WORK TO REMAIN.
- (C) DEMOLITION WORK SHALL INCLUDE MISCELLANEOUS ITEMS, SIMILAR, BUT NOT LIMITED TO: DUCT/PIPING SUPPORTS, CONTROL WIRING AND CONDUITS, DAMPERS, HANGERS, MOUNTS, CONTROLS, AND ALL RELATED ITEMS TO CLEAR OUT MECHANICAL WORK SO THAT CLEAR, CLEAN SPACES ARE LEFT FOR INSTALLATION OF NEW WORK.
- (D) PROVIDE WEATHER PROTECTION FOR ALL OPEN DUCTS, FLUE OPENINGS, WIRING/CONDUIT ENDS AND OPENINGS VACATED BY MECHANICAL WORK.
- (E) PATCH OPENINGS TO MATCH EXISTING ADJACENT MATERIALS, FIT, FINISH AND COLOR.
- (F) PATCH AND SEAL EXISTING DUCTWORK ON ROOF AIRTIGHT.

HVAC SHEET NOTES

- (1) DISCONNECT ELECTRICAL SERVICE, GAS SUPPLY, AND CONDENSATE DRAIN FROM RTU. TEMPORARILY CAP GAS BRANCH LATERAL AND LEAVE IN READY CONDITION TO RECEIVE NEW WORK. DISCARD CONDENSATE DRAIN IN ITS ENTIRETY. REMOVE CONTROL WIRING AND ASSOCIATED THERMOSTAT IN ROOM AND LEAVE CONDUIT IN READY CONDITION FOR NEW WORK.
- (2) REMOVE VERTICAL DISCHARGE UNIT FROM CURB AND DISCARD (UNLESS DISTRICT PROVIDES DIRECTION OTHERWISE). LEAVE SUPPLY AND RETURN DUCTWORK IN READY CONDITION FOR NEW WORK. PROVIDE TEMPORARY SHEET METAL CAP OVER CURB.
- (3) REMOVE HORIZONTAL DISCHARGE UNIT FROM PLATFORM AND DISCARD. LEAVE SUPPLY AND RETURN AIR DUCT MAINS IN READY CONDITION TO RECEIVE NEW WORK. PROVIDE TEMPORARY SHEET METAL CAP.
- (4) PRESERVE DUCTWORK ON ROOF FOR REUSE.
- (5) EVAPORATIVE COOLER (MAKEUP AIR UNIT) AND ASSOCIATED DUCTWORK TO REMAIN FOR REUSE (SHOWN FOR REFERENCE ONLY).
- (6) SPLIT SYSTEM CONDENSING UNIT TO REMAIN FOR REUSE (SHOWN FOR REFERENCE ONLY).
- (7) PRESERVE UNIT FOR REUSE. PERFORM HVAC SERVICE CHECK TO ENSURE SATISFACTORY OPERATION.
- (8) FLUE TO REMAIN, SHOW FOR PROXIMITY REFERENCE ONLY.

SITE VICINITY MAP (NTS)



1 HVAC DEMOLITION PLAN
SCALE: 1/16"=1'-0"

15000 inc.

heating, ventilation, air conditioning • plumbing design and engineering

6085 state farm dr. #130 phone: 707.577.0363
rohnert park, ca 94928 fax: 707.577.0364
email: info@15000inc.com

REGISTERED PROFESSIONAL ENGINEER
MAYTHEN J. TORRE
M 36968
Exp. 08/27/2020
MECHANICAL
STATE OF CALIFORNIA

CLIENT

WATERFORD UNIFIED
SCHOOL DISTRICT
219 N. REINWAY AVE, #2
WATERFORD, CA 95386

PROJECT TITLE

WATERFORD
JUNIOR HS HVAC
EQUIPMENT
MODERNIZATION
12916 BENTLY STREET
WATERFORD, CA 95386

APPROVALS

PLAN SET INTENDED FOR PERMIT
INTAKE AND REVIEW ONLY. BIDDING,
ESTIMATING AND/OR CONSTRUCTION
OF THIS PROJECT IS NOT AUTHORIZED
BY THE MEOR UNTIL THIS NOTE IS
REMOVED FROM THE DRAWINGS.

#

REVISION

DATE

DRAWING TITLE

HVAC DEMOLITION
PLAN

ISSUE DATE

08/27/2020

ISSUE TYPE

INTAKE REVIEW

DRAWN BY

MJT

CHECKED BY

MJT/JMT

SCALE

AS NOTED

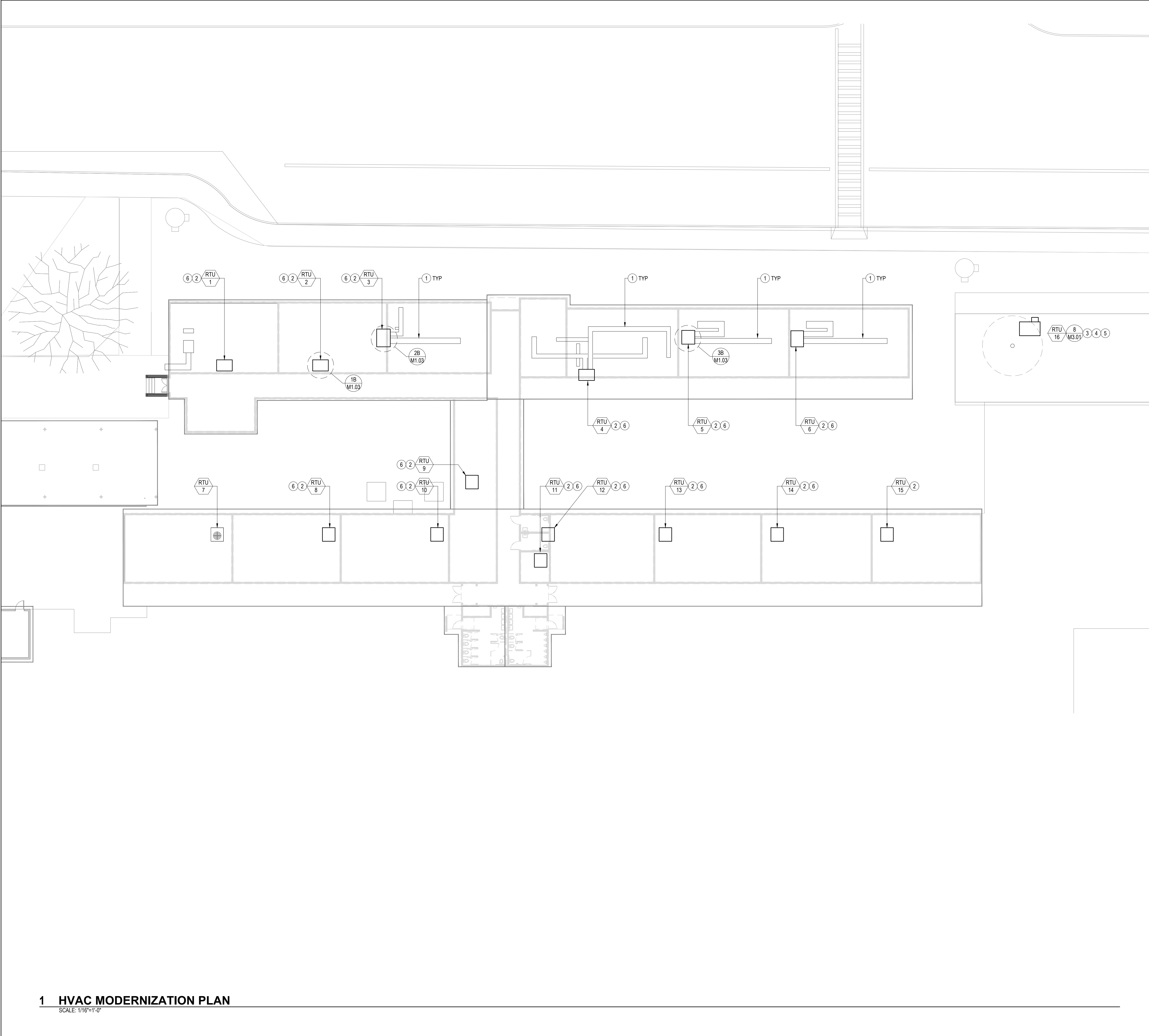
PROJECT No.

1533.00

NOT FOR CONSTRUCTION

DRAWING

M1.01



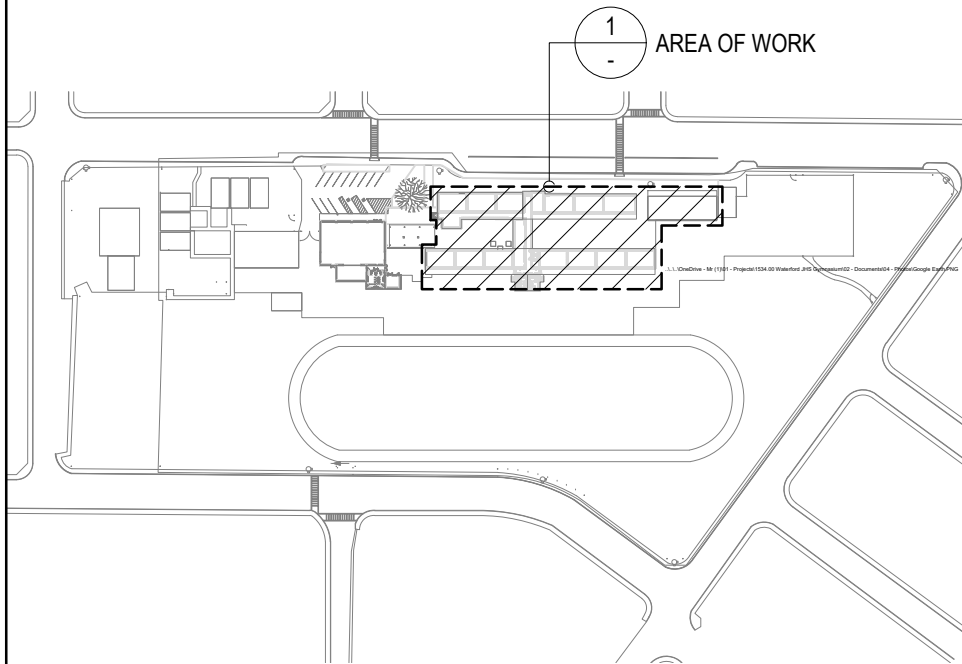
1 HVAC MODERNIZATION PLAN

SCALE: 1/16"=1'-0"

HVAC SHEET NOTES

- 1 PRESERVE (E) DUCTWORK ON ROOF UNLESS NOTED OTHERWISE. SEE ALSO ENLARGED PLANS ON M1.03 FOR ADDITIONAL INFORMATION/DIRECTION.
- 2 PROVIDE CURB ADAPTER AND SET UNIT ON (E) CURB. CONTRACTOR TO CONFIRM AND COORDINATE (E) CURB DIMENSION WITH MANUFACTURER PRIOR TO ORDER/INSTALLATION.
- 3 PRESERVE (E) ROOF CURB. UNIT IS DIRECT REPLACEMENT OF EXISTING.
- 4 CONNECT GAS TO (E) STUB PER DETAIL 5/M3.01. SIZE PIPE TO MATCH EXISTING.
- 5 CONNECT 3/4" CONDENSATE TO RTU PER DETAIL 4/M3.01. OFFSET PIPING TO NEAREST GUTTER OR ROOF DRAIN AND TERMINATE OVER WITH A DOWN TURNED ELBOW AND 2" AIR GAP.
- 6 SEE M1.03 FOR ENLARGE PLAN DETAIL.
- 7 (E) UNIT TO REMAIN FOR REUSE. PERFORM HVAC SERVICE CHECK TO ENSURE PROPER SYSTEM FUNCTIONALITY.

SITE VICINITY MAP (NTS)



15000 inc.

heating, ventilation, air conditioning • plumbing design and engineering

6085 state farm dr. #130 phone: 707.577.0363
rohnert park, ca 94928 fax: 707.577.0364
email: info@15000inc.com

REGISTERED PROFESSIONAL ENGINEER
MAYTHEN J. TORRE
M 36968
Exp. 08/27/2020
MECHANICAL
STATE OF CALIFORNIA

CLIENT

WATERFORD UNIFIED
SCHOOL DISTRICT
219 N. REINWAY AVE, #2
WATERFORD, CA 95386

PROJECT TITLE

WATERFORD
JUNIOR HS HVAC
EQUIPMENT
MODERNIZATION

12916 BENTLY STREET
WATERFORD, CA 95386

APPROVALS

PLAN SET INTENDED FOR PERMIT
INTAKE AND REVIEW ONLY. BIDDING,
ESTIMATING AND/OR CONSTRUCTION
OF THIS PROJECT IS NOT AUTHORIZED
BY THE MEOR UNTIL THIS NOTE IS
REMOVED FROM THE DRAWINGS.

#	REVISION	DATE

DRAWING TITLE

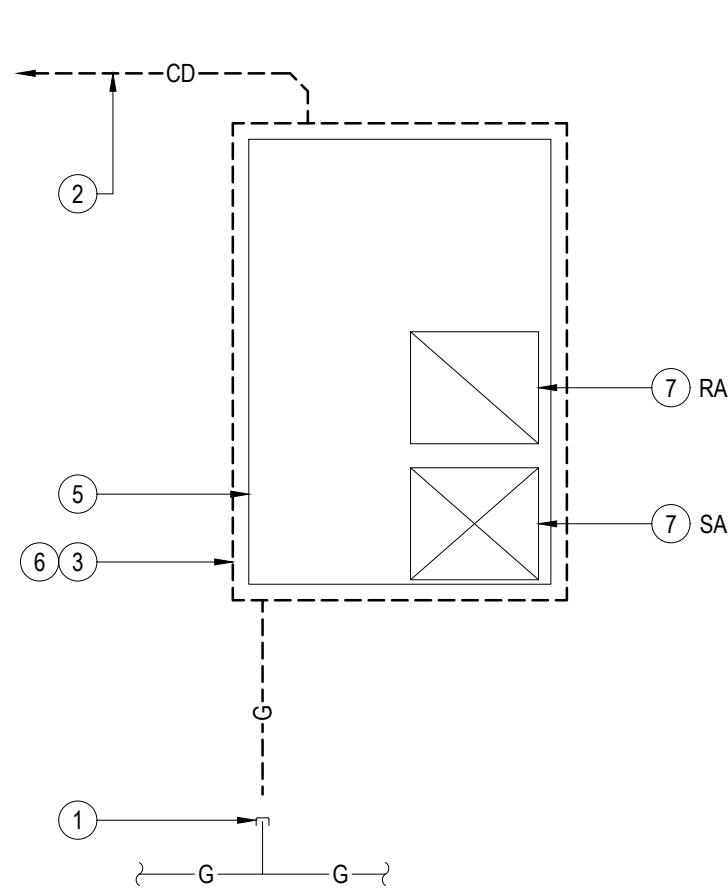
HVAC MODERNIZATION
PLAN

ISSUE DATE	08/27/2020
ISSUE TYPE	INTAKE REVIEW
DRAWN BY	MJT
CHECKED BY	MJT/JMT
SCALE	AS NOTED
PROJECT No.	1533.00

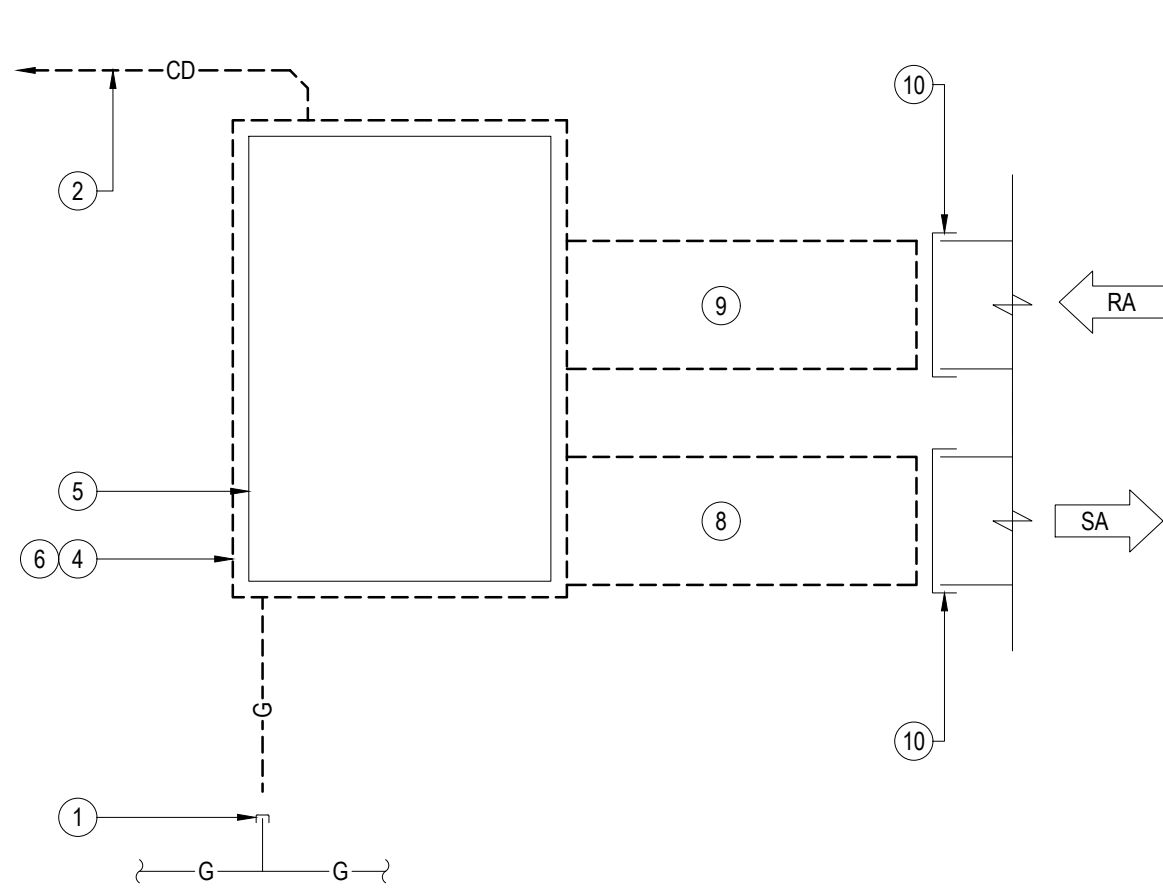
NOT FOR CONSTRUCTION

M1.02

DRAWING



ENLARGED PLAN - 1A (DEMOLITION)
NOT TO SCALE



ENLARGED PLAN - 2A/3A (DEMOLITION)
NOT TO SCALE

ROOFTOP UNIT PRE-BALANCE TABLE (TABLE-1)			
SYSTEM	SUPPLY AIR(CFM)	RETURN AIR (CFM)	OUTSIDE AIR (CFM)
RTU-1			
RTU-2			
RTU-3			
RTU-4			
RTU-5			
RTU-6			
RTU-8			
RTU-9			
RTU-10			
RTU-11			
RTU-12			
RTU-13			
RTU-14			
RTU-15			
RTU-16			

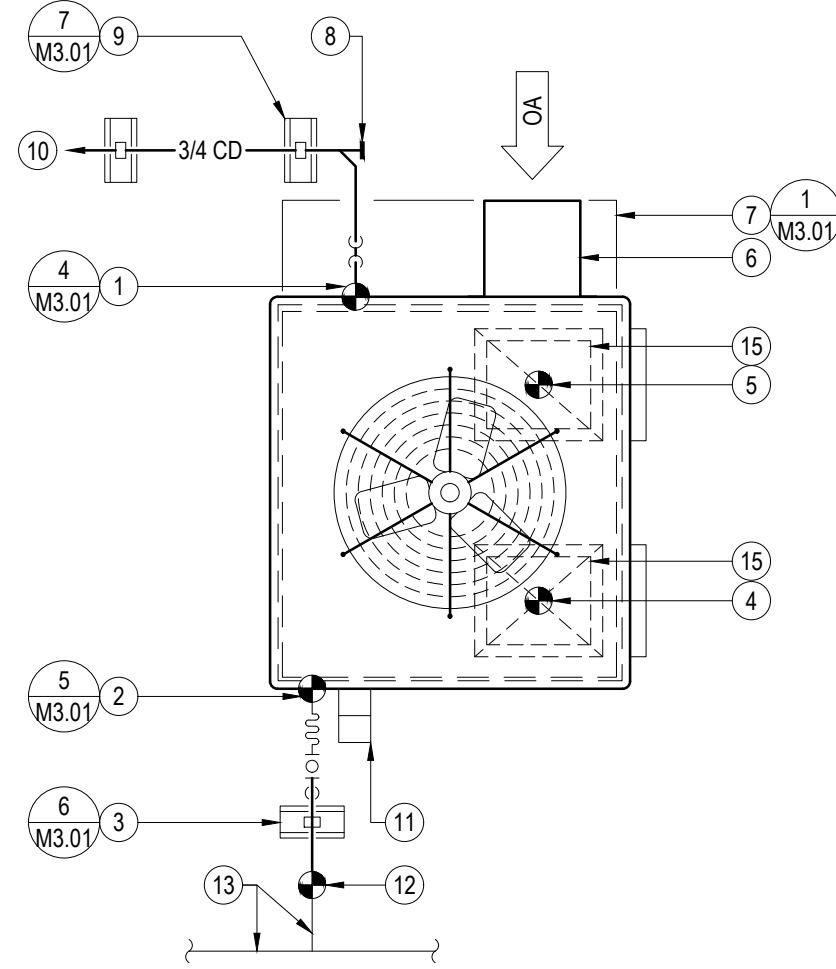
PRE-BALANCE DOCUMENTATION TABLE

HVAC DEMOLITION NOTES (1A,2A,3A)

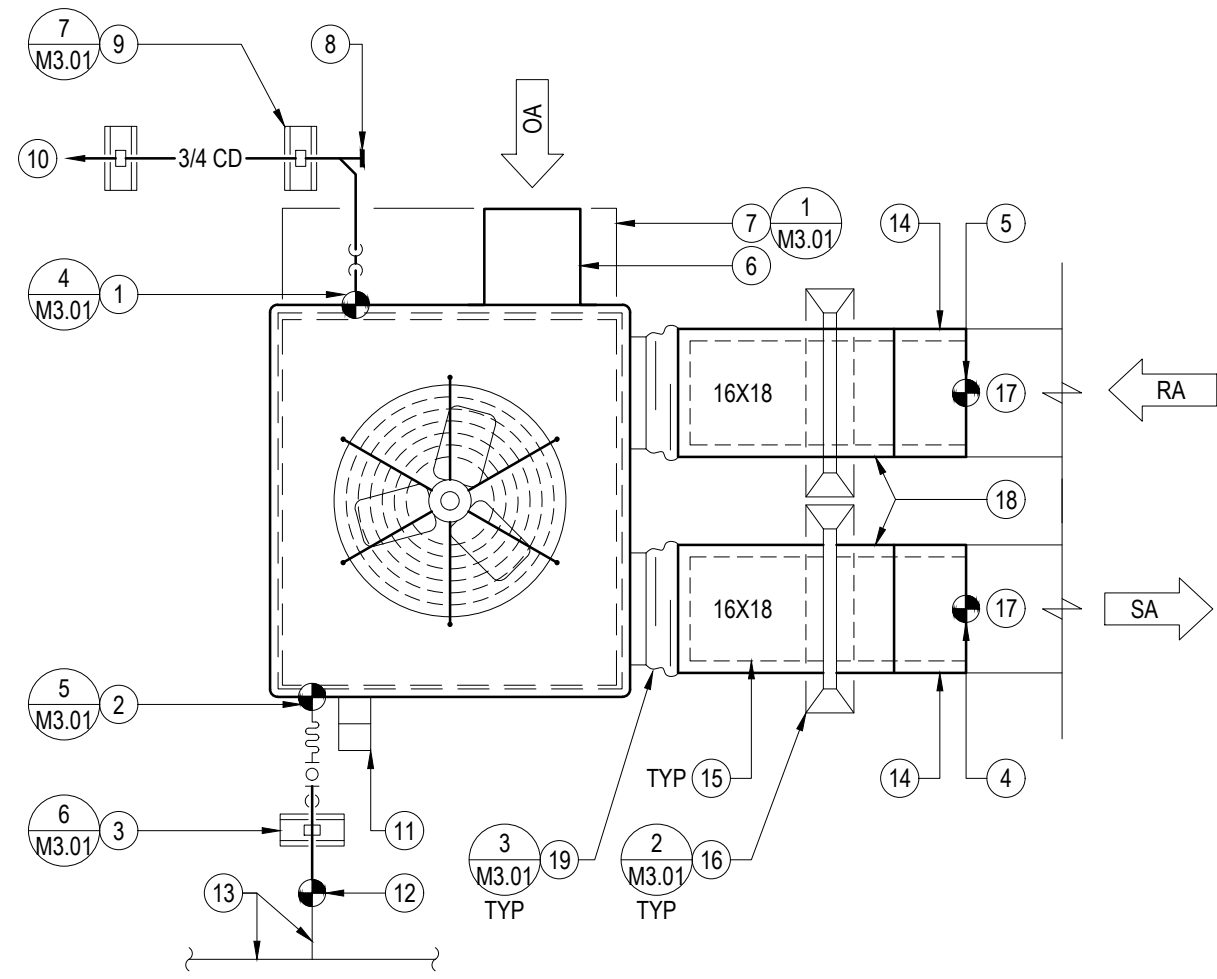
- TEMPORARILY CAP GAS PIPING - LEAVE IN READY CONDITION FOR NEW WORK. REMOVE AND DEMOLISH DOWNSTREAM SECTION IN ITS ENTIRETY.
- DISCONNECT AND REMOVE CONDENSATE PIPING IN ITS ENTIRETY.
- REMOVE DOWN DISCHARGE ROOFTOP UNIT.
- REMOVE HORIZONTAL DISCHARGE ROOFTOP UNIT.
- TEMPORARILY CAP ROOF CURB AND LEAVE IN READY CONDITION FOR REUSE AND/OR CONNECTION TO ADAPTER CURB.
- PRIOR TO UNIT REMOVAL, TEST AND BALANCE (TAB) CONTRACTOR SHALL PERFORM PRE-BALANCE OF SYSTEM TO DOCUMENT AND RECORD SUPPLY AIR AND RETURN AIR MAINS, AND OUTSIDE AIR FLOW IN TABLE-1, THIS SHEET.
- PRESERVE DUCT DROP THROUGH ROOF FOR CONNECTION TO FUTURE EQUIPMENT.
- REMOVE SUPPLY AIR DUCT ON ROOF (APPROXIMATELY 48" DOWNSTREAM OF UNIT).
- REMOVE RETURN AIR DUCT ON ROOF (APPROXIMATELY 48" DOWNSTREAM OF UNIT).
- TEMPORARILY CAP DUCTWORK AND LEAVE IN READY CONDITION FOR CONNECTION TO NEW WORK.

HVAC GENERAL DEMO NOTES

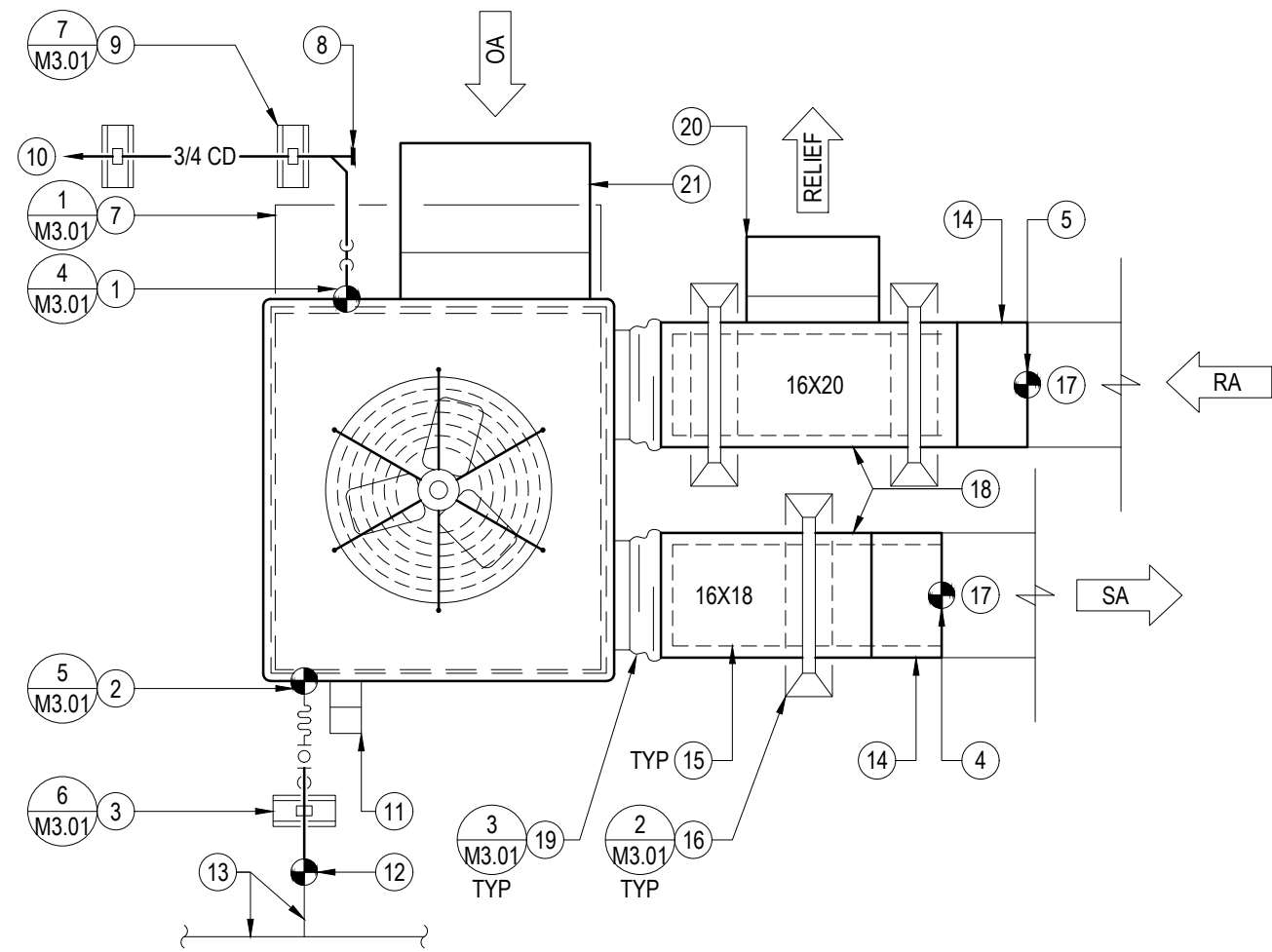
- (A) DASHED BOLD LINE [— — —] INDICATES WORK TO BE DEMOLISHED.
- (B) SOLID LIGHT LINE [———] INDICATES WORK TO REMAIN.
- (C) DEMOLITION WORK SHALL INCLUDE MISCELLANEOUS ITEMS, SIMILAR, BUT NOT LIMITED TO: DUCT/PIPING SUPPORTS, CONTROL WIRING AND CONDUITS, DAMPERS, HANGERS, MOUNTS, CONTROLS, AND ALL RELATED ITEMS TO CLEAR OUT MECHANICAL WORK SO THAT CLEAR, CLEAN SPACES ARE LEFT FOR INSTALLATION OF NEW WORK.
- (D) PROVIDE WEATHER PROTECTION FOR ALL OPEN DUCTS, FLUE OPENINGS, WIRING/CONDUIT ENDS AND OPENINGS VACATED BY MECHANICAL WORK.
- (E) PATCH OPENINGS TO MATCH EXISTING ADJACENT MATERIALS, FIT, FINISH AND COLOR.



ENLARGED PLAN - 1B (REMODEL)
NOT TO SCALE



ENLARGED PLAN - 2B (REMODEL)
NOT TO SCALE



ENLARGED PLAN - 3B (REMODEL)
NOT TO SCALE

HVAC REMODEL NOTES (1B,2B,3B)

- CONNECT CONDENSATE PIPING TO RTU AT POC. PROVIDE WITH ANCILLARY FITTINGS AND MAKE FINAL CONNECTION.
- CONNECT GAS PIPING TO RTU AT POC. PROVIDE WITH ANCILLARY FITTINGS AND MAKE FINAL CONNECTION.
- GAS SUPPORT ON ROOF.
- CONNECT SUPPLY AIR TO EXISTING AT POC. PROVIDE WITH ANCILLARY FITTINGS AND MAKE FINAL CONNECTION.
- CONNECT RETURN AIR TO EXISTING AT POC. PROVIDE WITH ANCILLARY FITTINGS AND MAKE FINAL CONNECTION.
- OUTSIDE AIR WEATHERHOOD, REFER TO SCHEDULE FOR MANUFACTURER/MODEL SPECIFICATION.
- CURB ADAPTER, REFER TO RTU SCHEDULE FOR MANUFACTURER/MODEL SPECIFICATION.
- END PLUG TYPE CLEANOUT.
- CONDENSATE PIPE SUPPORT ON ROOF. SLOPE PIPING DOWNWARD IN DIRECTION OF FLOW AT 1/8" PER FT.
- OFFSET CONDENSATE DRAIN TO NEAR ROOF GUTTER AND TERMINATE OVER GUTTER WITH A DOWN TURNED ELBOW AND 2" AIR GAP.
- FLUE DEFLECTOR.
- CONNECT GAS PIPING TO EXISTING - SIZE TO MATCH EXISTING BRANCH.
- (E) GAS PIPING ON ROOF, VIF SIZE AND EXACT LOCATION.
- TRANSITION DUCTWORK AS REQUIRED TO MEET (E) DUCTWORK.
- PROVIDE 1-1/2" DUCT LINER. DIMENSIONS ON DUCTWORK SHOWN REPRESENT CLEAR INSIDE DIMENSION AND DO NOT ACCOUNT FOR LINER THICKNESS.
- DUCT SUPPORT ON ROOF.
- (E) DUCTWORK ON ROOF, VIF EXACT SIZE AND LOCATION.
- SLOPE ROOF MOUNTED DUCTWORK TO SHED WATER.
- FLEXIBLE DUCT CONNECTION TO UNIT.
- BAROMETRIC RELIEF - SEE SCHEDULE FOR ADDITIONAL INFORMATION.
- ECONOMIZER - SEE SCHEDULE FOR ADDITIONAL INFORMATION.

15000 inc.

heating, ventilation, air conditioning • plumbing design and engineering

6085 state farm dr. #130
rohrert park, ca 94928

phone: 707.577.0363
fax: 707.577.0364
email: info@15000inc.com

REGISTERED PROFESSIONAL ENGINEER
MAYTHEN J. TORRE
M 36968
Exp. 08/27/2020
MECHANICAL
STATE OF CALIFORNIA

CLIENT

PROJECT TITLE

APPROVALS

REVISION DATE

DRAWING TITLE

ISSUE DATE 08/27/2020
ISSUE TYPE INTAKE REVIEW
DRAWN BY MJT
CHECKED BY MJT/MJT
SCALE AS NOTED
PROJECT No. 1533.00

DRAWING

WATERFORD UNIFIED
SCHOOL DISTRICT
219 N. REINWAY AVE, #2
WATERFORD, CA 95386

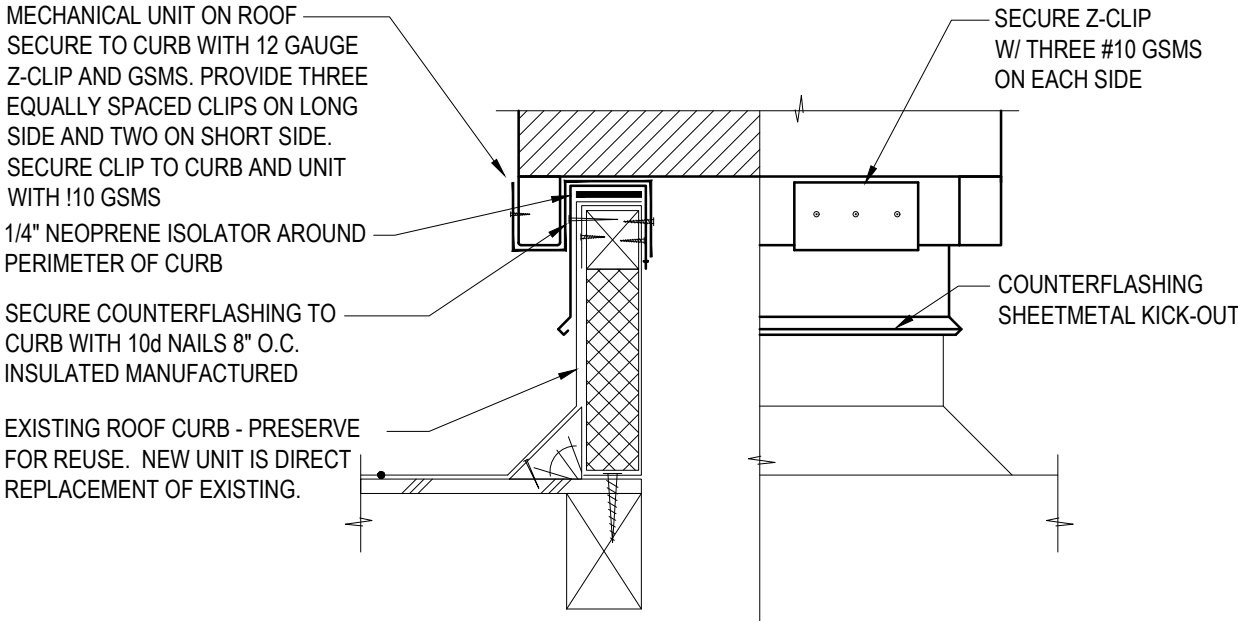
WATERFORD
JUNIOR HS HVAC
EQUIPMENT
MODERNIZATION
12916 BENTLY STREET
WATERFORD, CA 95386

PLAN SET INTENDED FOR PERMIT
INTAKE AND REVIEW ONLY. BIDDING,
ESTIMATING AND/OR CONSTRUCTION
OF THIS PROJECT IS NOT AUTHORIZED
BY THE MEOR UNTIL THIS NOTE IS
REMOVED FROM THE DRAWINGS.

HVAC ENLARGED
PLANS

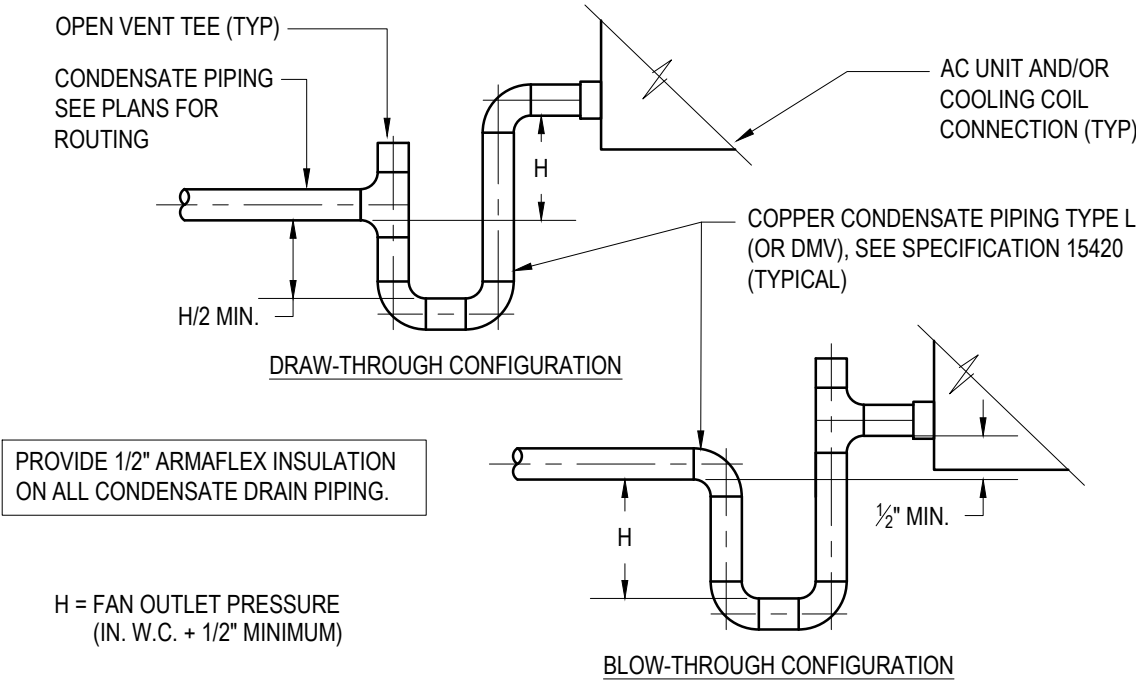
NOT FOR CONSTRUCTION

M1.03



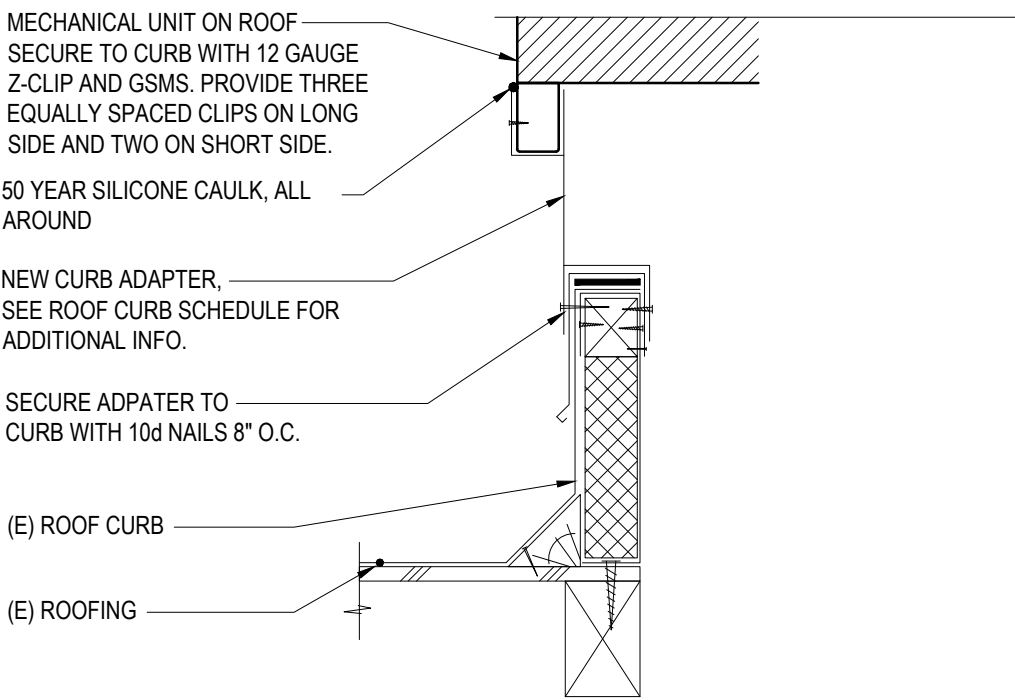
8 RTU MOUNTING TO (E) CURB

SCALE: NONE



4 CONDENSATE DRAIN CONNECTION

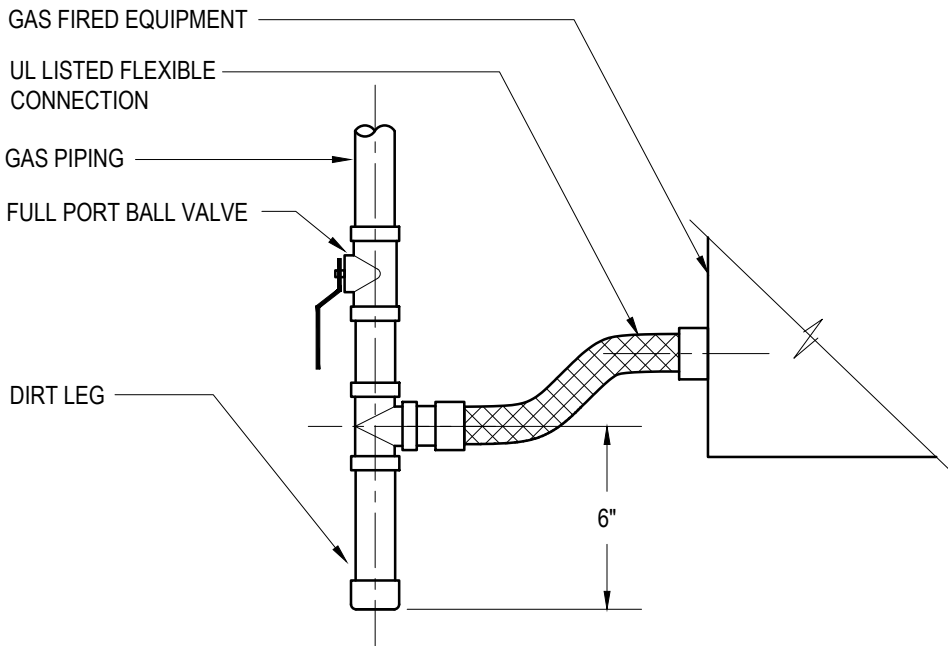
SCALE: NONE



1 ROOF MTD. AC UNIT ON CURB ADAPTER

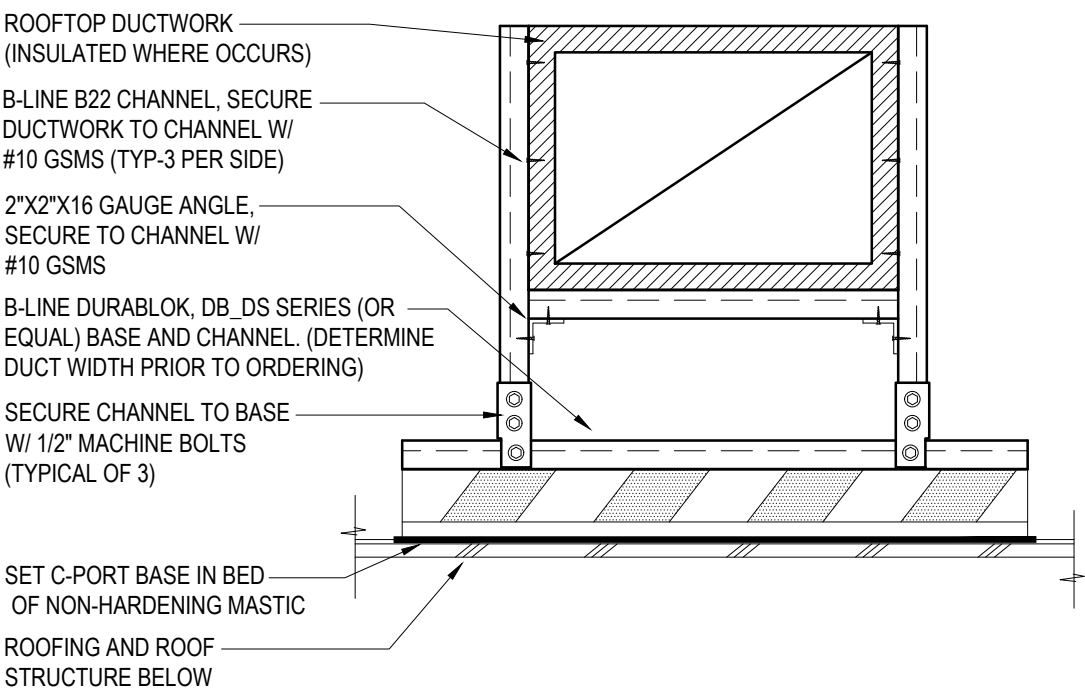
SCALE: NONE

NOTE: REFER ALSO MANUFACTURER'S INSTALLATION GUIDELINES



5 FUEL GAS CONNECTION DETAIL

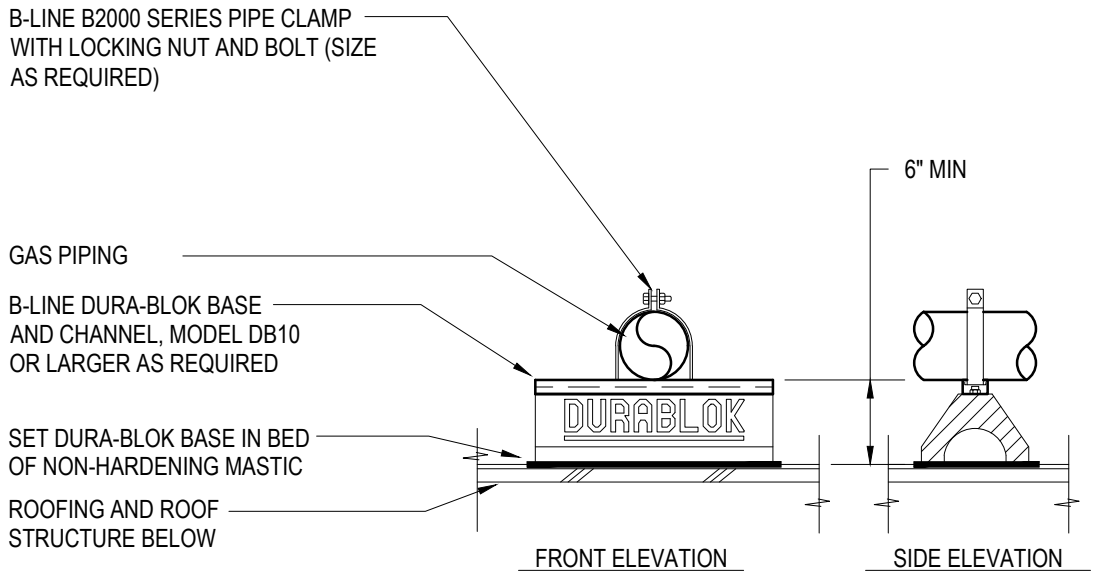
SCALE: NONE



2 DUCT MOUNTING ON ROOF

SCALE: NONE

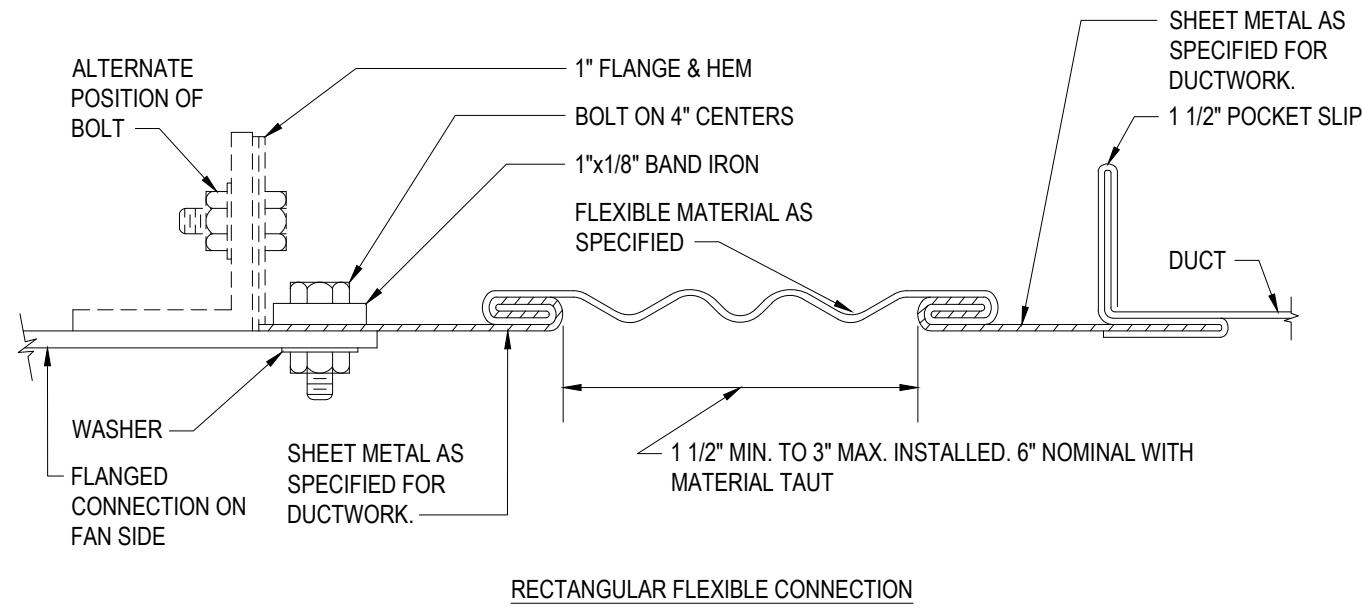
THIS METHOD OF CONSTRUCTION UTILIZES MATERIAL APPROVED BY THE U.S. GREEN BUILDING COUNCIL FOR LEEDS CREDITS



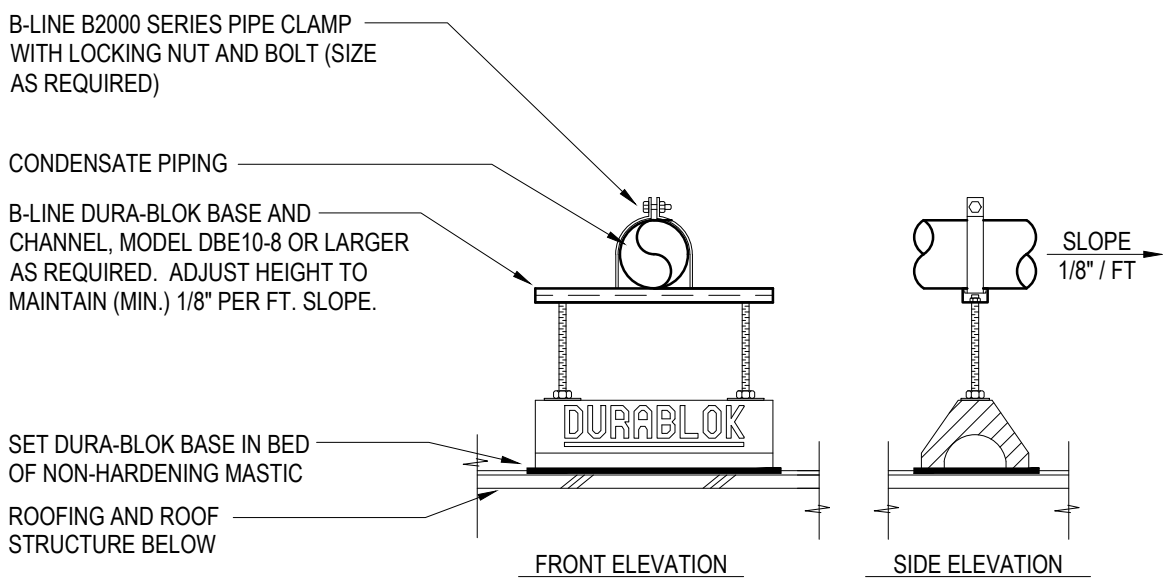
6 GAS PIPE SUPPORT ON ROOF

SCALE: NONE

THIS METHOD OF CONSTRUCTION UTILIZES MATERIAL APPROVED BY THE U.S. GREEN BUILDING COUNCIL FOR LEEDS CREDITS



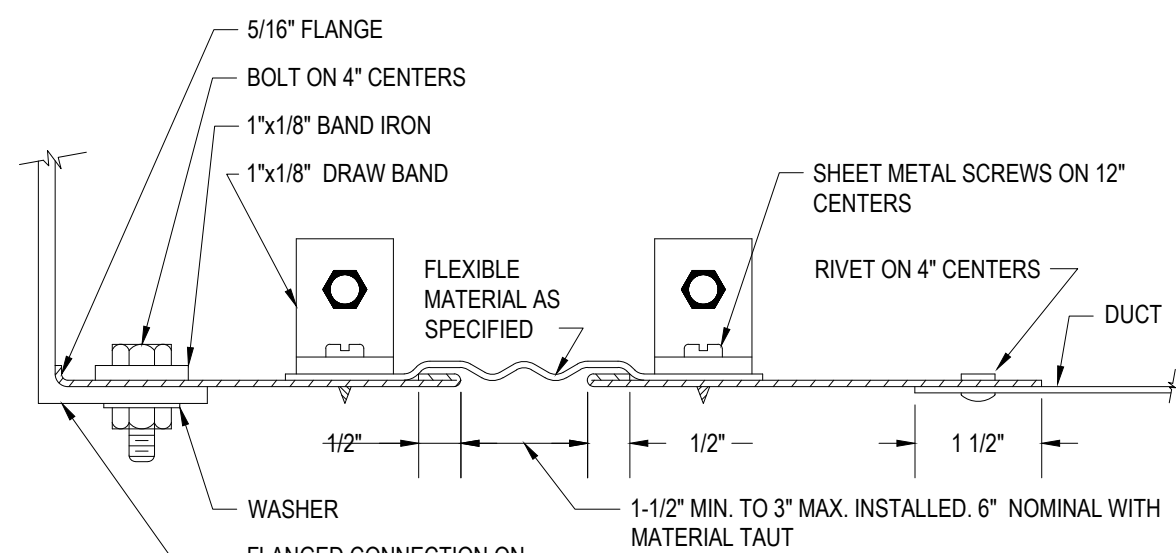
RECTANGULAR FLEXIBLE CONNECTION



7 CONDENSATE PIPE SUPPORT ON ROOF

SCALE: NONE

THIS METHOD OF CONSTRUCTION UTILIZES MATERIAL APPROVED BY THE U.S. GREEN BUILDING COUNCIL FOR LEEDS CREDITS



ROUND FLEXIBLE CONNECTION



CLIENT
WATERFORD UNIFIED SCHOOL DISTRICT
219 N. REINWAY AVE, #2
WATERFORD, CA 95386

PROJECT TITLE
WATERFORD JUNIOR HS HVAC EQUIPMENT MODERNIZATION
12916 BENTLY STREET
WATERFORD, CA 95386

APPROVALS
PLAN SET INTENDED FOR PERMIT INTAKE AND REVIEW ONLY. BIDDING, ESTIMATING AND/OR CONSTRUCTION OF THIS PROJECT IS NOT AUTHORIZED BY THE MEOR UNTIL THIS NOTE IS REMOVED FROM THE DRAWINGS.

#	REVISION	DATE

DRAWING TITLE
DETAILS

ISSUE DATE	08/27/2020
ISSUE TYPE	INTAKE REVIEW
DRAWN BY	MJT
CHECKED BY	MJT/JMT
SCALE	AS NOTED
PROJECT No.	1533.00

NOT FOR CONSTRUCTION

DRAWING
M3.01