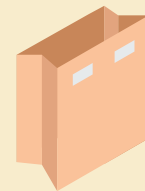




NUTRITION SERVICES

Distance Learning Meal Service

Beginning Tuesday September 8th for all students



Meal Pickup Locations

Location	Pick Up Time	Days	Meals
Beacon Hill- Parking lot	11:50am-12:45pm	M-F	1 breakfast + 1 lunch given daily
Barnes- Front parking lot	11:50am-12:45pm	M-F	1 breakfast + 1 lunch given daily
Butler Acres- Lower parking lot	11:50am-12:45pm	M-F	1 breakfast + 1 lunch given daily
Catlin- Front parking lot	11:50am-12:45pm	M-F	1 breakfast + 1 lunch given daily
Carroll's- Parking lot	11:50am-12:45pm	M-F	1 breakfast + 1 lunch given daily
Wallace- Front commons of school	11:50am-12:45pm	M-F	1 breakfast + 1 lunch given daily
Rose Valley- Upper parking lot	11:50am-12:45pm	M-F	1 breakfast + 1 lunch given daily
Kelso High School- Back parking lot	11:50am-12:45pm	M-F	1 breakfast + 1 lunch given daily
Kelso High School- Back parking lot	4:45 pm -5:45pm	Mondays	1 weeks' worth of meals + milk

Weekly bag beginning Monday September 14th

Meal Delivery Locations

Lexington Route Stops	Pickup Timeframe	M-F	1 breakfast + 1 lunch given daily
-Decatur and Cowlitz Drive	12:00pm-12:10pm		
-Riverside Park parking lot	12:15pm-12:25pm		
-Ponderosa and Ventura	12:30pm-12:40pm		
-Penny Ln and Vermilion	12:45pm-12:55pm		
North West Route Stops		M-F	1 breakfast + 1 lunch given daily
-District Office	12:00pm-12:10pm		
-Columbia Heights Assembly Church	12:20pm-12:30pm		
-Country Run Apartments	12:40pm-12:50pm		
North East Route Stops		M-F	1 breakfast + 1 lunch given daily
-Pleasant Hill and N. Pacific pull out	12:00pm-12:10pm		
-Rollingwood and Swiftwater	12:20pm-12:30pm		
-Mt. Brynion and Hageman	12:45pm-12:55pm		
South Stops		M-F	1 breakfast + 1 lunch given daily
-Cedar and 9 th	12:00pm-12:10pm		
-South Pacific and Mill	12:15pm-12:25pm		
-Walnut and 10th	12:30pm-12:40pm		
-Carrol Rd and S Kelso Dr. pull out	12:50pm-1:00pm		

Please allow +/- 5 minutes for stop times as they are approximate and subject to traffic. We cannot turn around or go back to stops once we have left.

Meal bags will contain breakfast and lunch. Lunch items will be cold and best reheated at home.

MEALS ARE FREE FOR ALL STUDENTS!!!!

Students can go to *any school or stop* to collect a meal bag.

See our department page on kelso.wednet.edu for menu and nutrition details

Contact our office at 360-501-1807