

Welcome to Caldwell Elementary

Information and
Annual Report to the Public

2020-2021



**Presented at K-4 Open Houses
August 17-20 and August 26**

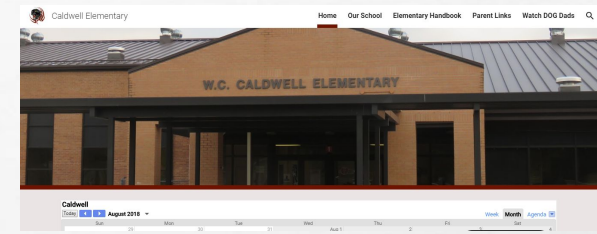
**Your child's safety and
concern is our #1 priority!**

Love. Lead. Educate. Empower.

Every kid. Every day.

How can I find out information about our school?

- [HTTPS://WW2.BENTONSCHOOLS.ORG/O/CES](https://ww2.bentonschools.org/o/ces)
- Facebook Page: @CaldwellPanthers
- Instagram: caldwell_elementary
- Twitter: @CaldwellBenton
- District Site: www.bentonschools.org
- Download the Benton Schools app!



Caldwell Panthers
@CaldwellPanthers

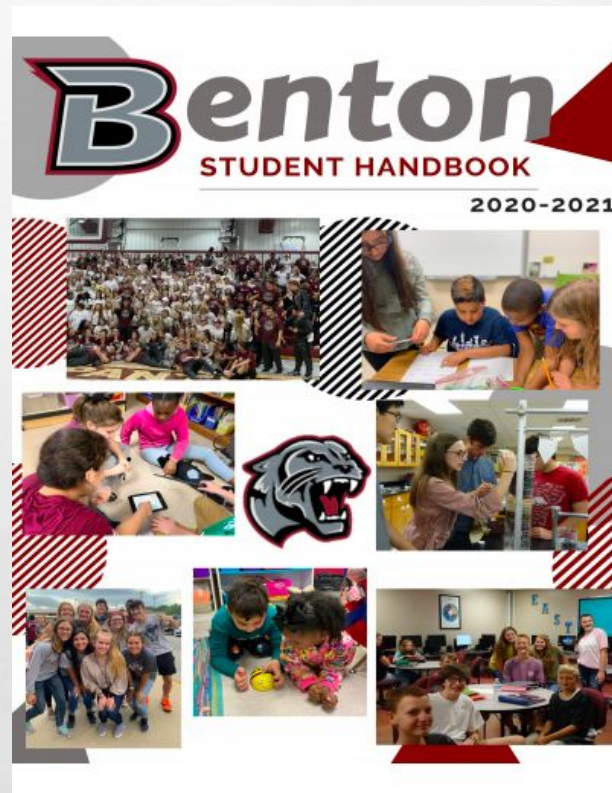


caldwell_elementary
Caldwell Elementary



Caldwell Elementary
@CaldwellBenton

SCHOOL DISTRICT HANDBOOK



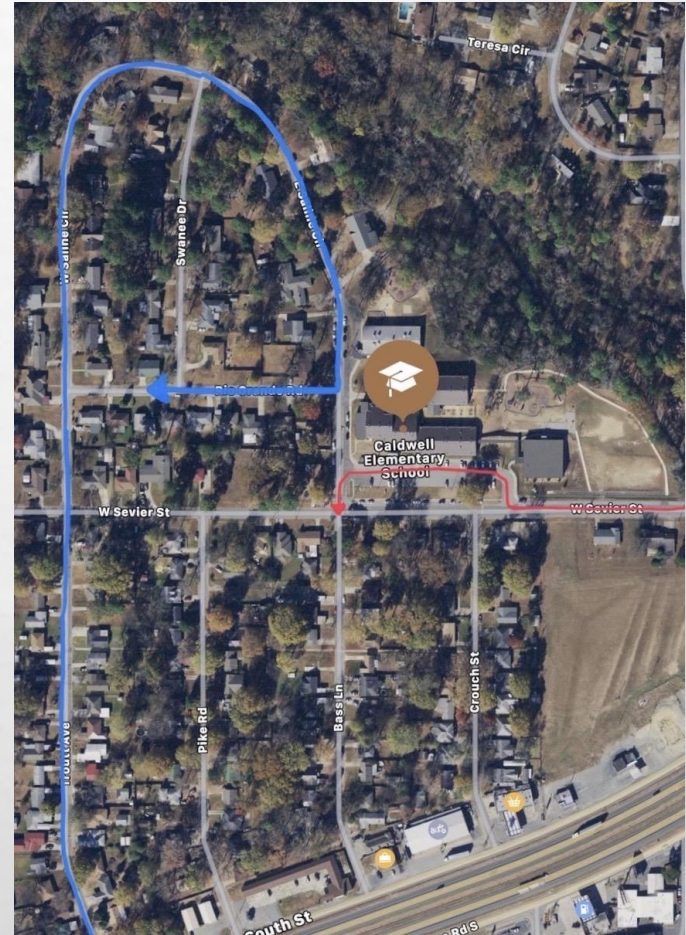
Find the online handbook at <https://ww2.bentonschools.org/o/ces>.

MORNING ROUTINES

- Students (K-4) may arrive at 7:20 when supervision begins and enter through the front entrance. Please do not drop students off before 7:20 for their safety.
- Breakfast will be available for purchase.
- Downstairs doors open for K-1 students at 7:30.
- The tardy bell rings at 7:50.

Where do I drop off my child?

- Students (K-4) may be dropped off in the front from 7:20 -7:50. Use the single right lane for morning drop off.
- K-1 students may be dropped off downstairs between 7:30-7:45.

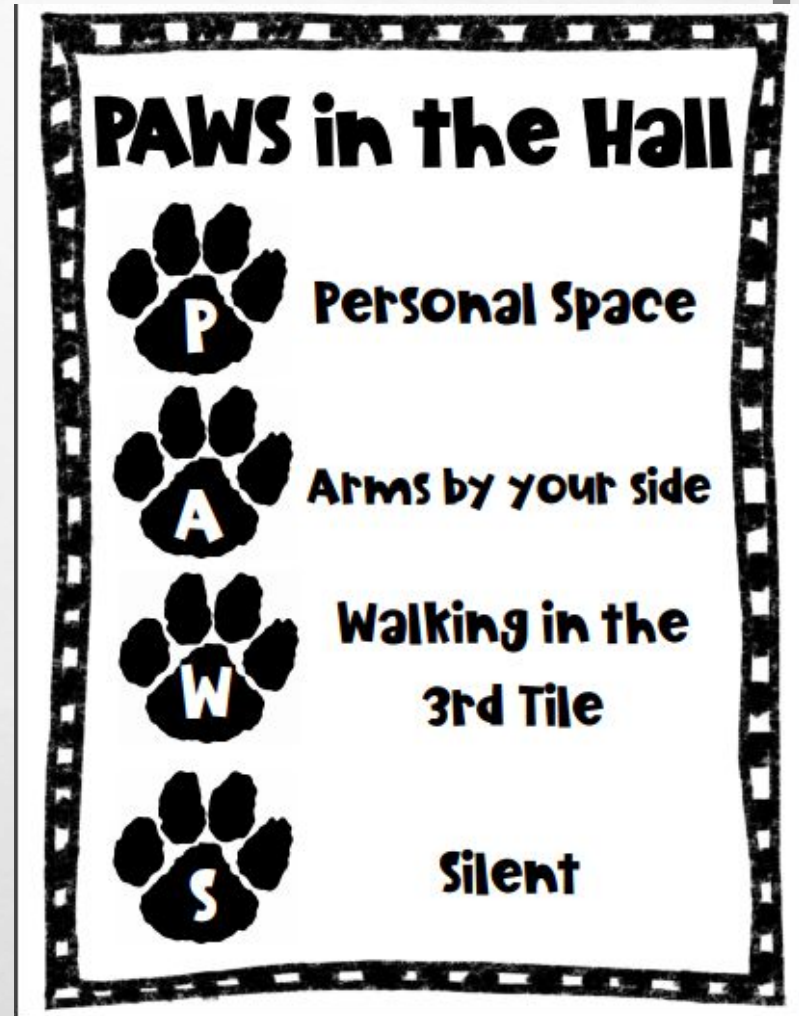


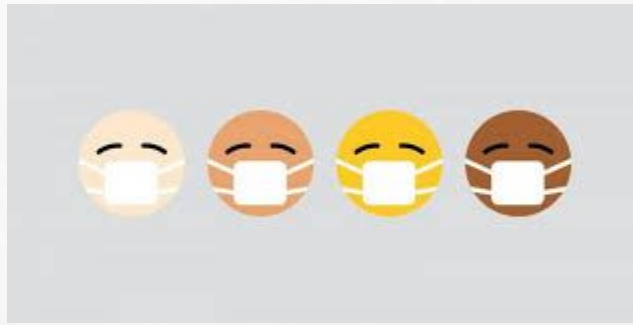
What if my child is tardy?

- Students arriving after the tardy bell (7:50 a.m.) must be signed in at the office by an adult.

Hallways:

- PAWS in the hall
 - **P:** Personal Space
 - **A:** Arms by your your side
 - **W:** Walking on the 3rd tile
 - **S:** Silent
- Keep masks on.
- Enter the classroom when your teacher gives you permission to.
- Keep your hands on your own property.



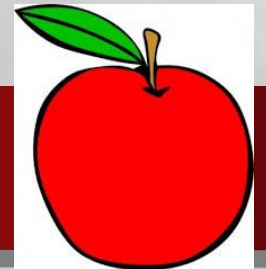


Wearing your Mask

- Keep your mask on your lanyard.
- When you are not wearing your mask, tuck your lanyard with your mask on it in your shirt.
- Only wear and touch your own mask! Do not wear, trade, or touch another person's mask.
- Keep your mask on your face at all times. Your teacher or another adult will let you know when you do not have to wear your mask.

Cafeteria: Lunch

- Keep your legs under the table and your bottom on your paw.
- Your food is only yours and your friend's food is theirs. Please don't share or touch each other's food.
- Clean up your trash on your table and on the floor.
- Close your milk before throwing your trash away.
- Your lanyard and mask need to stay tucked in your shirt.
- Stay in your personal space to make sure we are social distancing.
- Indoor Recess: Sit outside your teacher's room patiently and quietly until recess begins
- If you get a **green DOJO** from a teacher at lunch, you will get a **sticker** to show your teacher so they can add your **green point**.



There will be one cafeteria lunch choice at this time.



Playground

- **K-1 Playground:** Stay where we can see you! Don't go past the corner of the building.
- **2-4 Playground:** Stay where we can see you! Stay inside the track.
- **2-4 Students:** Handrail bars are used to help walking, not playing on.
- Leave doors closed. A teacher will let you in if you need to go inside.
- Nature stays on the ground where nature belongs.
- **Sports Balls (school/teacher owned):** Can have at recess→ Not at Morning Recess or Afternoon Bus Recess
- **Slides:** Feet first, on your bottom, one at a time
- **Swings:** On your bottom, no jumping out
- **Pushing on Swings:** Let your friends swing on their own
- Sanitize or clean your hands heading out to recess and heading back in from recess
- **Masks:** Tuck your lanyard with your mask on it inside your shirt while you play.
 - Wear your mask when lining up.

Device and Backpack Procedures

- Make sure your lunchbox and/or water bottle are placed **safely** in your backpack away from your device
- **Gently** place your device in your backpack in a **safe** spot
- Zip your backpack up **tightly**
- Place your backpack on your back **gently** and keep it on your back
- **Gently** and **softly** put your backpack away when you get home to protect your device



AFTERNOON ROUTINES



- Students will be dismissed in a car line, on a bus, or as walkers (those who walk home).
 - School is dismissed at 2:50.
 - Daycare van riders will be dismissed downstairs before K-1 car riders. Those vans arriving after 2:50 will dismiss from the front of the building.
 - The upstairs car rider line uses two lanes once inside the parking lot. Please pull along the fence on W. Sevier while waiting to enter.
 - Walkers will be dismissed after buses arrive and escorted across the crosswalks in the front of the building.
- Buses arrive at approximately 3:15.

Car Riders

- K-1 students will be picked up in the downstairs car line unless they have an older sibling.
- K-1 students with older siblings will be picked up in the front car line.
- Please leave driveways, cross streets, and driving lanes clear. Pull to the right side of the road to wait.

What bus do we ride?

- Call Bus Shed 776-5706 to find out about bus # and route information.

Can my child ride with a friend?

- In the event of an emergency (if it is the only way the student has to get home) AND ...
- When permission has been obtained by the principal or designee.

What if my secondary student rides a transfer bus to Caldwell?

- They will be dropped off in the front of the building where you can pick them up.

This will be sent home with each student as a friendly reminder.



Nightly Checklist

Use this checklist to help you prepare each night for the next day of school.

- Clean the mask worn today
- Check to see if you have an extra mask packed in your backpack
- Pack your lanyard with your mask in your backpack for the next day
- Charge your device
- Pack your device and charger in your backpack
- Pack your own, personal water bottle
- Pack an extra change of clothes

Absences

- If my child is absent or not feeling well, please call the office.
- Send a note or doctor's excuse when they return.
- *Courtesy letters* will be sent periodically to keep you informed of your child's absences and/or tardies.

*See the handbook for excused and unexcused criteria.

How can I get involved?

- Encourage your child academically, socially and emotionally. Empower them to be confident and problem-solvers!
- Build a relationship with your child's teacher.

May I visit my child's classroom?

- This year there are no on-site visitors or volunteers at this time.

Can I bring or send food to school?

- Students may bring lunches (no sodas) and snacks for themselves.
- Please do **not** send the following items to school (based on BSD Policy):
 - CHEWING GUM AND STICK SUCKERS
 - CUPCAKES, COOKIES, OR PROCESSED FOODS MADE PREDOMINANTLY FROM SWEETENERS. (There are 9 scheduled days throughout the year that the school or school PTO may offer these types of snacks.)
 - HOME-COOKED OR BAKED FOODS
- Teachers will plan Christmas/Valentine's Day class parties; Birthday parties are not permitted.

What if my child needs medicine at school?

- Call the school nurse after 7:30 a.m. to drop off. Wait in your vehicle, and she will come to you.
- Adults must bring medicines in original containers and sign needed forms.
- Students may keep their inhaler if there is written permission from parents/doctor.

Virtual Students

- STUDENTS WILL HAVE THE SAME REQUIREMENTS, ASSIGNMENTS AND ASSESSMENTS AS ON-SITE STUDENTS. THESE ASSIGNMENTS AND ASSESSMENTS WILL BE COMPLETED AND UPLOADED ON TIME. A STUDENT'S TOTAL DAY IS EXPECTED TO BE APPROXIMATELY 4 HOURS. THIS WILL INCLUDE INSTRUCTION, ASSIGNMENTS, AND SUPPORT SERVICES, IF ANY.
- STUDENTS WILL BE GRADED THE SAME AS ON-SITE STUDENTS.
- COMMUNICATION WITH YOUR CHILD'S TEACHER CAN BE DONE VIA SCHOOL PHONE, EMAIL, DOJO, AND GOOGLE CLASSROOM. IN ALL COMMUNICATION, PLEASE GIVE THE TEACHER 24 -48 HOURS TO RESPOND.
- IF YOU NEED TO SPEAK WITH YOUR CHILD'S TEACHER OR YOUR CHILD NEEDS ASSISTANCE, TIME WITH THE TEACHER MAY BE SCHEDULED.
- WHEN AN ASSESSMENT IS COMPLETED, PLEASE ALLOW YOUR CHILD TO COMPLETE THE ASSESSMENT WITHOUT ASSISTANCE FROM YOU OR OTHER RESOURCES. THIS WILL GIVE THE TEACHER INFORMATION ON YOUR CHILD'S PROGRESS AND WHAT NEEDS TO BE DONE TO SUPPORT THE CHILD.
- STUDENTS WILL BE REQUIRED TO COME ON-SITE FOR ALL STATE MANDATED TESTING.

Hybrid Schedule

1st week of school : Aug 24-28

Monday - 1st-4th grades: onsite for students with last names beginning with A-M

Tuesday - 1st-4th grades: onsite for students with last names beginning with N-Z

Wednesday - Off-site for teachers and all students

Thursday - K-4th: onsite students with last names beginning with A-M

Friday - K-4th: onsite students with last names beginning with N-Z

Hybrid Schedule

2nd week of school : Aug 31-Sept 4

Monday and Thursday - all grades: onsite for students with last names beginning with A-M

Wednesday - Off-site for all students

Tuesday and Friday - all grades: onsite for students with last names beginning with N-Z

If child care is a concern, students may attend all four (4) onsite learning days for Week 2.

“

**IF YOU HAVE A CHILD'S HEART,
YOU HAVE THEIR MIND.**

”

FLIP FLIPPEN

**THANK YOU FOR SHARING YOUR CHILD WITH US
AND ALLOWING US TO LOVE THEM!**