



# **Westfield Academy and Central School**

Excellence in Education

## **Testing Plan for COVID – 19**

**August 14, 2020**



The District will notify the State and local health departments upon being informed of any positive COVID-19 diagnostic test result by an individual in school facilities or on school grounds.

Individuals include students, faculty, staff, and visitors. The District will also refer students or staff who need tests to their primary care physician.

The District COVID-19 health coordinator is our school nurse.

The District will work with the [Chautauqua County Department of Health](#) to provide testing information to the families and/or individuals needing testing.

Please visit the [Chautauqua County Department of Health](#) website for additional information.

[Next steps](#) as outlined by the Chautauqua County Department of Health.

**If the student or staff members shows symptoms** they will be examined by the school nurse, isolated, and informed that they must seek medical attention.

**Health Office Procedures During Visits/Sick Student Pick-Up** Temperature and symptoms will be checked to ensure correct isolation or care area is provided to students. Individuals will be isolated if presenting with high-risk COVID-19 symptoms and will need immediate pick-up from parent/guardian. Health office staff must wash hands or use hand gel prior to entering and leaving the office. Students must wear a school mandated mask or face covering unless indicated otherwise. The six-foot distancing rule applies for everyone in the Health Office. Our District has designated a room for individuals requiring attention. Examination areas will be disinfected. If a student is being picked up, the school nurse or delegated staff member will escort the student to the vehicle. The parent/guardian should not come into the building. Isolation, Personal Protective Equipment standards in the Health Office and appropriate PPE must be utilized in conjunction with universal precautions, and proper hand hygiene. Soap and washing for 20 seconds is the preferred method. Hand sanitizer with at least 60% alcohol is also acceptable. (Soap and water handwashing must be used in the case of gross soiling.)

**Protocol for students that exhibit COVID-19 symptoms:** If a student presents with symptoms related to COVID-19, the teacher should use their classroom phone to communicate with the school nurse. The nurse or her/his designee will respond to the

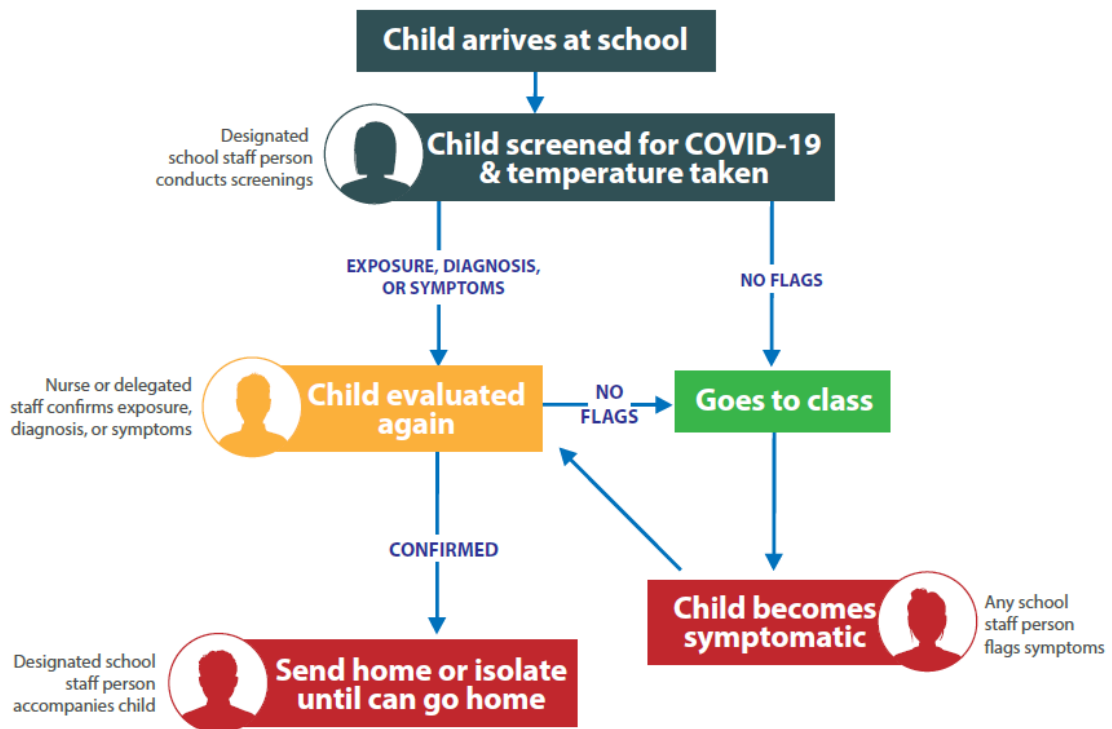


student's classroom and escort the student to the examination areas. [The District will follow this protocol](#) for all students and staff that exhibit COVID-19 symptoms.

### Screening Process



## STAFF ROLES FLOW CHART



August 14, 2020

**PLEASE NOTE: We are asking all parents/guardians to screen their child(ren) prior to coming to school for symptoms of COVID – 19.**



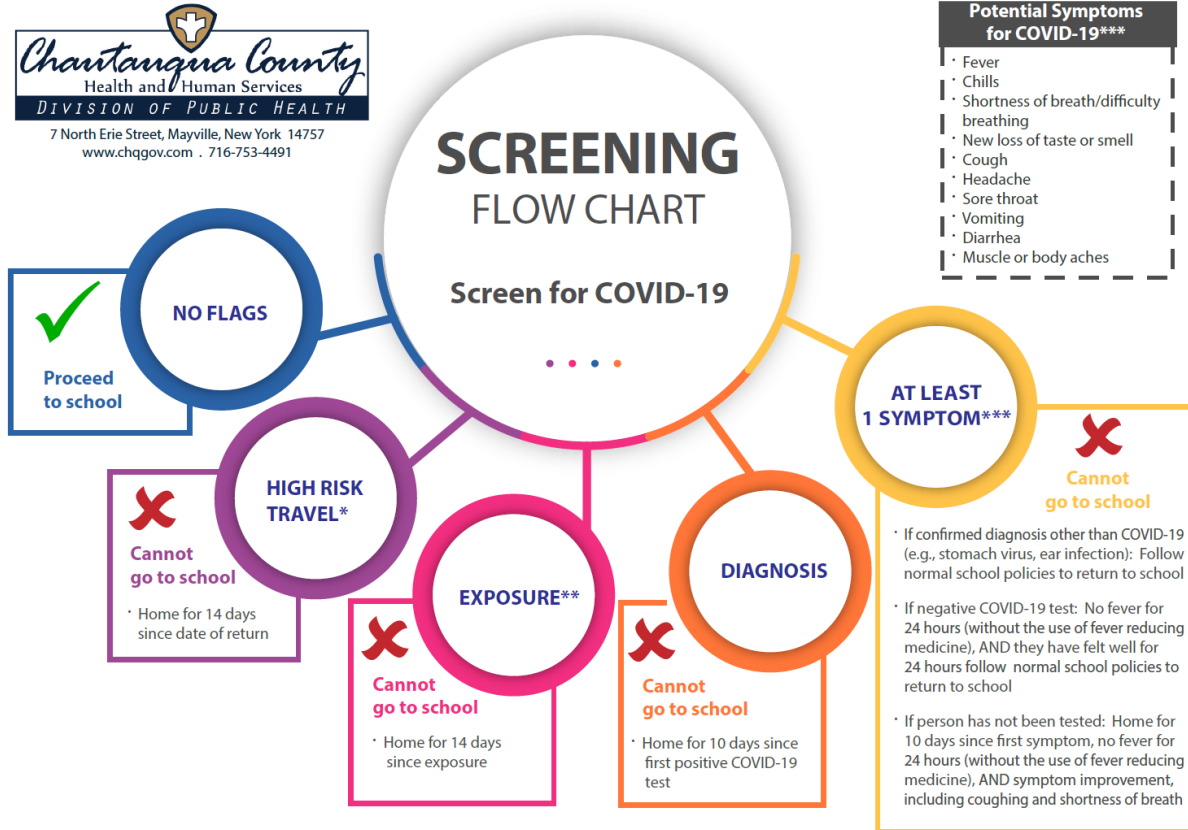
**From the Centers for Disease Control** People with COVID-19 have had a wide range of reported symptoms – ranging from mild symptoms to severe illness. Symptoms may appear **2-14 days after exposure to SARS-CoV-2**. Symptoms can include:

- Fever or chills
- Cough
- Shortness of breath or difficulty breathing
- Fatigue
- Muscle or body aches
- Headache
- New loss of taste or smell
- Sore throat
- Congestion or runny nose
- Nausea or vomiting
- Diarrhea

This list does not include all possible symptoms and children and youth with SARS-CoV-2 infection may experience any, all, or none of these symptoms. (See [Symptoms of Coronavirus](#) for more information).



**Screening cont.**



\* International travel or travel to a restricted state (<https://coronavirus.health.ny.gov/covid-19-travel-advisory>)

\*\* Exposure refers to being within 6 feet of someone diagnosed with COVID-19 for 10 minutes or more.

\*\*\* Not attributed to other known causes such as allergies, asthma, migraines, etc.