



WHITE SALMON
VALLEY SCHOOL
DISTRICT

4 KEY DISTANCE LEARNING EXPECTATIONS



ATTENDANCE STUDENT WORK CORE 4 COMMUNICATION

#whitesalmonstrong

ATTENDANCE

WHITE SALMON
VALLEY SCHOOL
DISTRICT

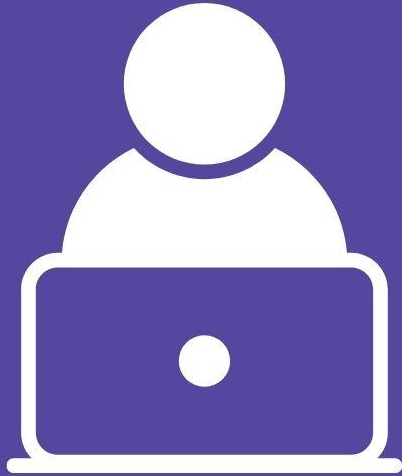


Students will be required to check in on their virtual classes every day.

#WhiteSalmonStrong

STUDENT WORK

WHITE SALMON
VALLEY SCHOOL
DISTRICT



Students will turn their work in on SeeSaw* or Google Classroom.

Teachers will provide feedback and grade work on Skyward or SeeSaw* within one week.

Students will have daily live instruction via Zoom.

*Whitson Elementary will use SeeSaw.

#whitesalmonstrong

Core 4

The purpose of Core 4 is to have a standard set of tools we are using to present information. WSVSD uses these 4 tools that address needs in different areas.

Keeping those tools consistent across the district allows us all to move more smoothly through the challenges we face in this new learning environment.

Other tools can be added in as necessary and linked via google classroom or google suite.

Content delivery. The home base for assignments, announcements & links out.



Seesaw (K-3)

Synchronous video. Real time. Class meetings, small groups, office hours.



Zoom



Google Classroom (4-12)



Google Suite

The holding tank. Docs, slides, sheets, forms....



Screencastify

Asynchronous (recorded) video lessons or how-to's.

COMMUNICATION

WHITE SALMON
VALLEY SCHOOL
DISTRICT



Teachers will communicate weekly assignment expectations with families.

Parents and students will reach out with questions and/or concerns about the class or assigned work.

Families are assigned a district liaison to have one point of contact to facilitate school and community resources.

#whitesalmonstrong

WE ARE
#whitesalmonstrong

