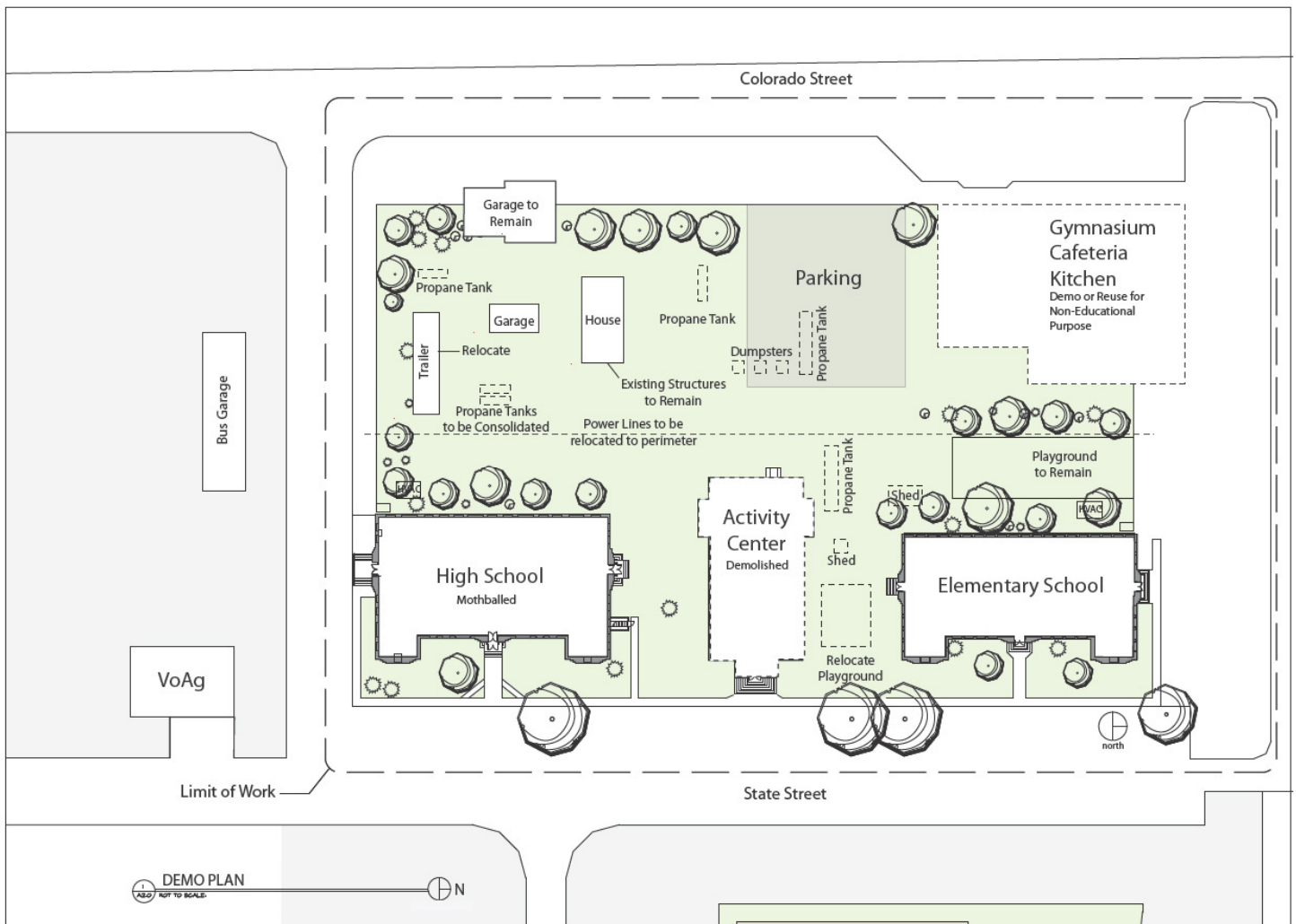


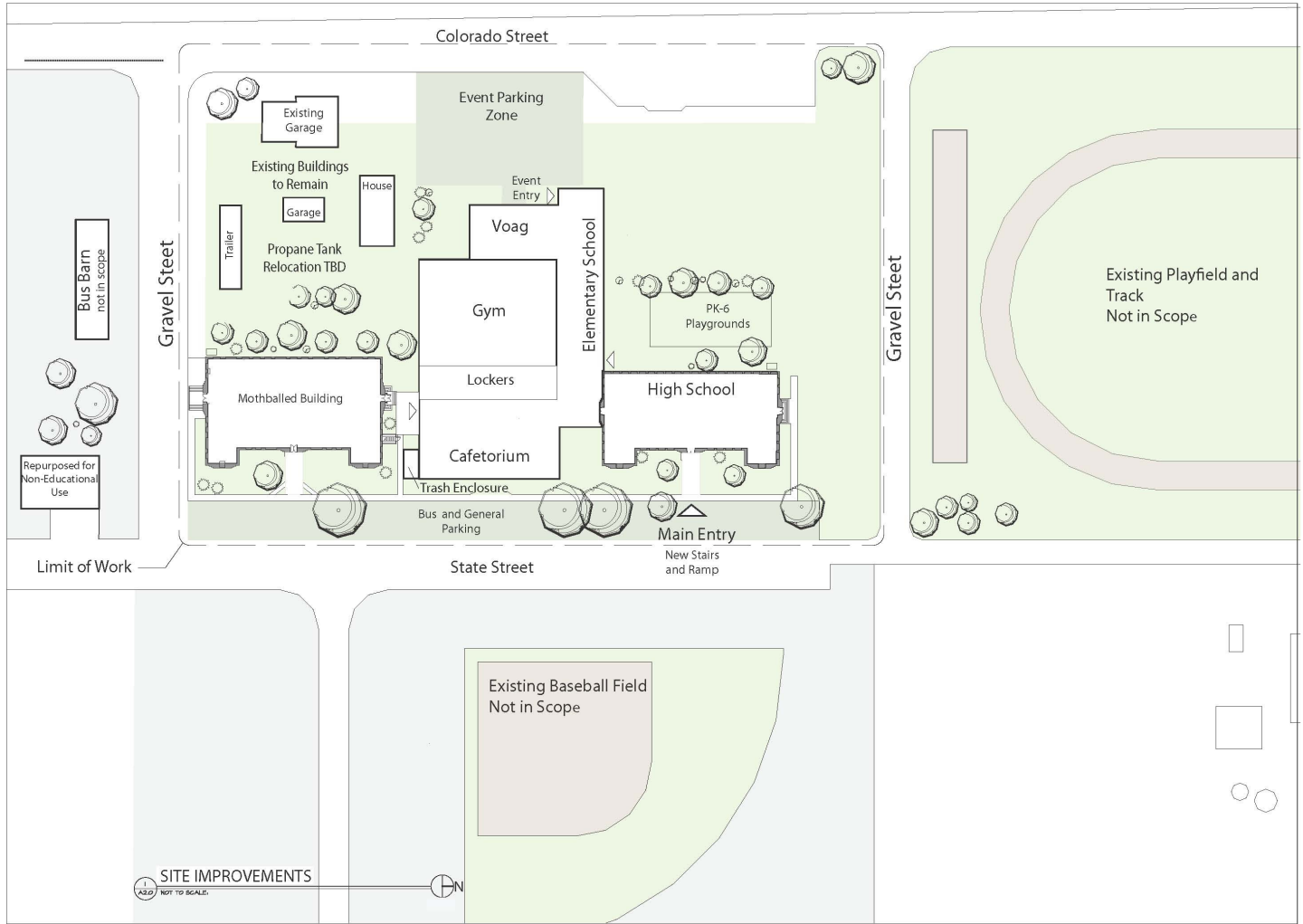
Kim School District RE-88 Area Maps - Campus

The population in Kim is approximately 300 people. The District is the 13th largest district by land area in Colorado and consists of a campus of 5 main buildings. Due to its rural location student population is low compared to more urban school districts.

Scheme 7.3A improves building efficiencies by reducing the overall square footage of the campus by approximately 32% (46,443sf versus 31,987sf) and creates a PK-12 facility under one roof.

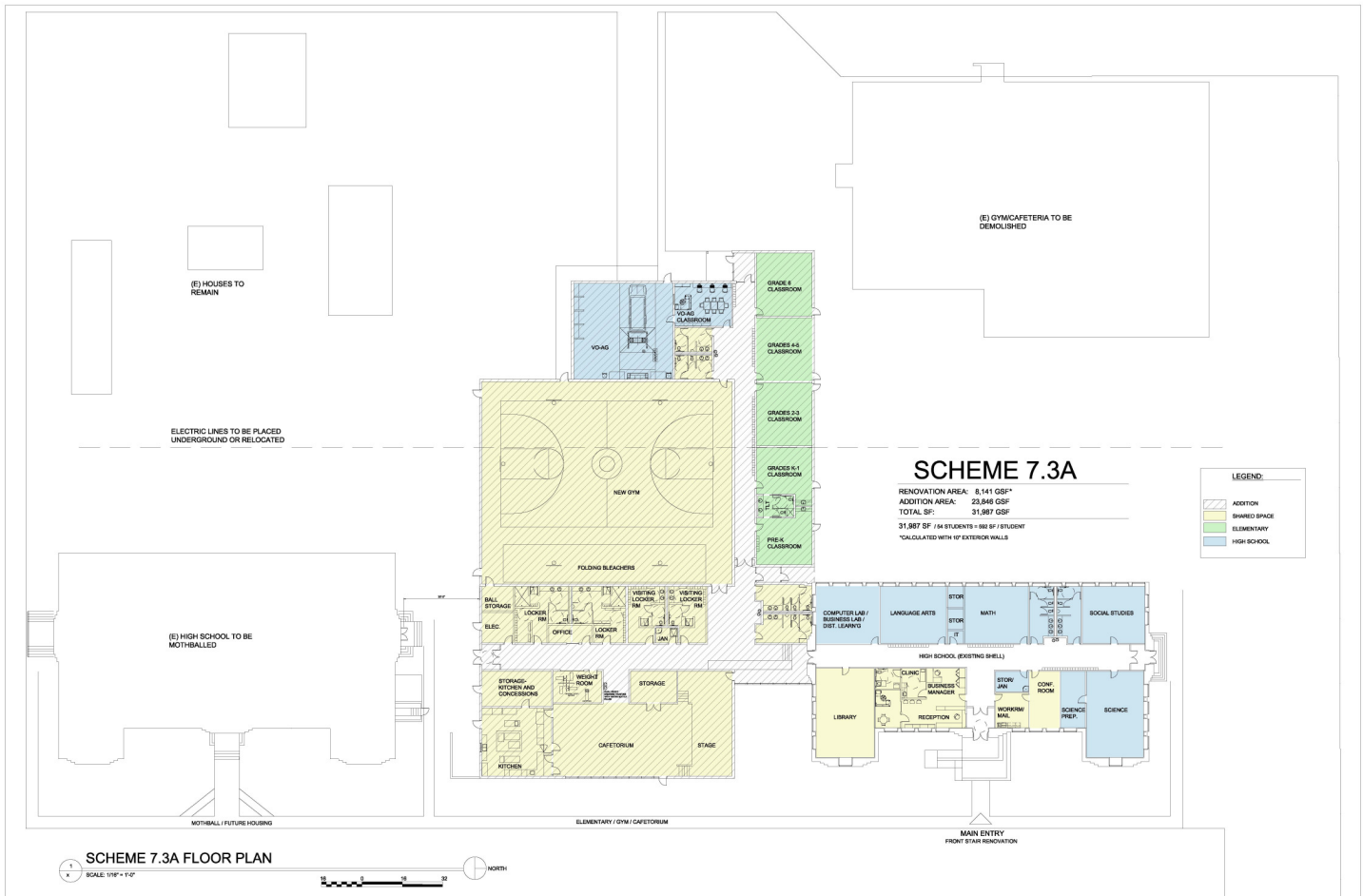


Demolition Plan Based on Preferred Master Plan Scheme 7.3A



Site Plan Based on Preferred Master Plan Scheme 7.3A

The solution concentrates on addressing critical health and life safety concerns and consolidating services and functions to gain efficiency. The Activity Center will be demolished and if salvaging stone for re-use in the new construction and site work is feasible then that possibility will be explored. An addition will be constructed adjacent to the south elevation of the Elementary School, and the elementary classrooms (PK-6) will be relocated to the new structure with egress doors at grade from each classroom. The addition will also contain a new gymnasium, a cafetorium, and new locker room and toilet facilities. The location of the Gym and Cafetorium is central to both the Elementary and High School zones and provides an important adjacency of gymnasium and cafeteria to support the numerous athletic after hours events.



Preferred Master Plan Scheme 7.3A
2013 BEST Grant Estimated Project Cost: \$10,133,766

The campus currently has 37,629 net square feet (46,443 gross sq.ft.) of educational space. The scheme we are submitting meets the educational program requirements with 24,299 net sf. (31,987 gross sq.ft.).

- This is accomplished with efficiencies of layout and shared functions and adds areas for teacher support spaces (work rooms, supply rooms, conference room), clinic, science preparation and storage, and toilet facilities.
- Increased program efficiencies will be achieved by integrating the auditorium and cafeteria functions into a single space; combining the undivided high school and elementary school libraries into a shared single library; providing a single administration area, with teacher support and clinic, adjacent to the new secured main entry vestibule.