

**Crane  
Independent School District  
2020-2021  
Safe School Re-entry Plan Summary**



**Please note this is subject to change as we receive updated information and directives from the federal, state, and local governments. Visit our website and follow district social media accounts for the most current information.**

## Forward Address to Parents

---

As the Crane ISD plans for the start of the 2020-21 school year, we are committed to keeping our families, staff, students, and community members safe and informed. While there are still many uncertainties regarding what the upcoming school year will look like, we are hard to ensure our students continue to have access to a high-quality educational experience.

Our district web page serves as a hub for updates related to the reopening of our schools. The situation surrounding COVID-19 is evolving with time. We will update our page as our plans continue to take shape. We encourage you to keep checking back for the latest information.

After thoroughly reviewing guidance from the Texas Department of State Health Services (DSHS) and the United States Centers for Disease Control and Prevention (CDC), Crane ISD plans to reopen and welcome students back into our classrooms on Monday, August 24, 2020. However, we will do so while enforcing strict social distancing, hygiene, and cleaning practices.

In addition, we want to remind our students, staff, and families to be mindful of key preventative measures. The CDC offers some tips on its website that can help avoid the spread of COVID-19 and other illnesses. Please remember that if your child is sick, they should not be at school.

Any families who are not comfortable having their children attend school on campus are not required to do so. If you would like to explore this option, please call your campus and let the school know.

The past two months have been an incredibly challenging time for the entire Crane ISD community. I want to thank you for your patience and understanding as we have dealt with this unprecedented situation. We look forward to seeing our students again soon.

Sincerely  
Crane ISD

### **KEY CONTACTS:**

Administration Office: (432) 558-1022  
Crane Elementary School: (432) 558-1050  
Crane Middle School: (432) 558-1040  
Crane High School: (432) 558-1030  
Cafeteria: (432) 558-1062  
Maintenance & Transportation: (432) 558-1064  
Special Services: (432) 558-1032  
Technology Office: (432) 558-1074

## **Staff and Student Safety Protocols \_\_\_\_\_**

Because COVID-19 can be contracted by people of all ages, it is crucial that Crane ISD take appropriate action to keep its employees and students safe. The following protocols shall be followed by each staff member and student at Crane ISD during the 2020-21 school year. The ongoing emergency pandemic is continuously evolving, and these protocols will be periodically reviewed and revised as appropriate to reflect orders and/or recommendations from local, state, and national government officials and/or health authorities. In the event that changes are made to this document, the District will promptly notify parents, students, and staff members.

### **Screening**

- All staff members will self-screen for the COVID-19 symptoms listed below prior to reporting to campus each day.
- Staff members who experience COVID-19 symptoms or receive a positive, lab-confirmed diagnosis of COVID-19 must report such symptoms or diagnosis to the District and must remain off campus until completing the Isolation Procedures below.
- Additionally, staff members are required to notify the district if they come in "close contact" with an individual who receives a positive, lab-confirmed diagnosis of COVID-19, as defined herein, and if so, must remain off campus until a 14-day incubation period has passed.
- "Close contact," unless defined otherwise by local health officials, is defined as the following contact in the last 14 days with an individual who is lab-confirmed to be infected with COVID-19:
  - Being directly exposed to infectious secretions (e.g., being coughed on while not wearing a mask or face shield); **OR**
  - Being within 6 feet for a total cumulative duration of 15 minutes, while not wearing a face covering.
- The following is the recognized list of symptoms that District officials will screen for during daily screenings:

<b>COVID-19 Symptoms for Screening</b>	
Fever (100° or higher) or chills	Headache
Cough	New loss of taste or smell
Shortness of breath	Sore throat
Difficulty breathing	Congestion or runny nose
Fatigue	Nausea or vomiting
Muscle or body aches	Diarrhea

- Parents must not send a student to District campuses if the student is exhibiting any of the above COVID-19 symptoms, test positive for the virus, or come in “close contact” with an individual who tested positive for the virus, as defined herein. Throughout the school day, teachers will monitor students and notify the campus nurse if a student begins exhibiting COVID19 symptoms.
- Any student who exhibits symptoms while at school will be **immediately** separated from other students until they can be picked up by a parent or guardian.
- If a student or staff member begins showing COVID-19 symptoms while at school, appropriate personnel will promptly clean all areas used or occupied by that individual.
- If a student reports feeling feverish during the school day, they shall immediately receive a temperature check to determine if they are symptomatic for COVID-19.
- Students will undergo individual screening via student questioning, parent questioning, and or temperature checks. The school reserves the right to adjust screening methods and intervals to the current health conditions.
- Prior to entering a District campus, visitors will be screened to determine if they exhibit COVID-19 symptoms, tested positive for COVID-19, or came within “close contact” with an individual who tested positive for COVID-19, as defined herein.
- Any staff and students who have traveled internationally must be quarantined for 14 days prior to returning to school.

### **Isolation Procedures**

- The following procedures must be followed by staff members and students before they may return to campus following exposure to the virus.
- For the purposes of this Plan, all individuals who exhibit symptoms of COVID-19 but do not undergo virus testing or medical evaluation are assumed to have COVID-19 and also must observe these procedures.
- If a student or staff member tests positive for COVID-19 **or** exhibits symptoms of COVID-19, that individual may not return to school until the following criteria are satisfied:
  - At least three days (72 hours) have passed since recovery (resolution of fever without the use of fever-reducing medications); **AND**
  - The individual has improvement in COVID-19 symptoms as listed above; **AND**
  - At least ten days have passed since symptoms first appeared.

- Alternatively, if a student or staff member exhibits symptoms of COVID-19 without obtaining a positive, lab-confirmed result, that individual may return back to campus upon satisfaction of the following criteria:
  - The individual obtains a medical professional's note clearing that individual for return based on an alternative diagnosis; **OR**
  - The individual receives two separate confirmations (at least 24 hours separating each confirmation), that the individual is free of COVID19 via acute infection tests at an approved COVID-19 testing location.
- Each campus will close off areas that are heavily used by any individual who tests positive for COVID-19 until surfaces in those areas can be disinfected.

### **Reporting**

- In the event that a student or staff member tests positive for COVID-19, the District shall notify its local health department, in observance of applicable federal, state, and local laws.
- Consistent with local policies and legal confidentiality requirements, the District shall notify all staff members and families of all students within that campus if a lab-confirmed COVID-19 case is identified among students or staff members who participate in any on-campus activities.

### **Health and Hygiene Protocols**

- Masks or full-face shields must be worn by all staff members while attending on-campus instruction and related activities. **Students aged 10 and older as well as in grades 4-12** will be required to wear masks or full-face shields while attending on-campus instruction and related activities.

The mask requirements set forth above are required under GA-29 and TEA guidance. Students under the age of 10 are encouraged to wear masks if developmentally appropriate.

- During extracurricular activities where it is determined by District officials to be impractical for students to wear masks or face shields, students must still wear masks or face shields when entering and exiting facilities and practice areas and when they are not actively engaged in those activities.
- If during participation in extracurricular activities, it is determined that the mask requirement is impractical, students and staff members must wear

- masks or face shields until they can arrange themselves in positions that will allow them to maintain safe distancing.
- On the first day of on-campus instruction, the District will provide instruction to all students on appropriate hygiene practices and other illness mitigation practices.

### **Safe Instruction**

- Hand sanitizer will be made available at each campus entrance and each classroom.
- Staff members, students, and visitors will be encouraged to sanitize and/or wash hands frequently throughout the day.
- Elementary students will engage in supervised handwashing for at least 20 seconds at least two times per day, in addition to regular handwashing before eating and after using the restroom. The Middle School and High School will encourage students to follow protocol.
- Staff members and students will be encouraged to practice good hygiene relating to virus transmission, including coughing and sneezing into tissues or elbows as well as immediate handwashing or sanitizing.
- District custodial staff will regularly sanitize all areas occupied by students and staff members.
- When feasible and practical, campus windows will be opened in an effort to improve air flow by allowing outside air to circulate in the building.
- Where space permits, desks will be separated by a distance of no less than six feet.
- When feasible and appropriate, outdoor spaces may be utilized for certain classes in an effort to reduce risk of virus transmission.
- The District will eliminate assemblies and other activities that bring large groupings of students and/or staff members together at once.
- Student desks/seats will be situated to limit transmission of the virus.
- During breakfast and lunch, students will be seated in a manner that minimizes the potential spread of any airborne or aerosolized viruses. Students who bring their own lunches will not be permitted to use district microwaves or other available appliances.
- Returned library books will be sanitized before being recirculated to other students.
- District school buildings will open for students at designated times. Any student arriving prior to opening will not be permitted inside of the building. Parents who arrive early must wait with their child until the school building opens.
- School dismissal will be staggered according to a set schedule in order to reduce large student gatherings.

### Safe Transportation

- Students and staff members will be required to use hand sanitizer upon boarding the bus or other district vehicles.
- When feasible and appropriate, bus windows will be opened to allow outside air to circulate in the bus.
- Parents are encouraged to drop off students at the school in order to limit potential transmission of COVID-19 while riding the bus.
- Buses will be thoroughly sanitized after each bus trip, with special focus on “high-touch” areas.
- When feasible, students will maintain social distancing on buses by occupying every other seat.
- Face masks and/or full-face shields must be worn on all buses by students aged ten and older as well as 4<sup>th</sup> grade through 12<sup>th</sup> grade students.

### Safe Visits

- Parents and other adults may still visit District campuses when such visits are essential to school operations. At all times, visitors must adhere to the District’s virus transmission prevention and mitigation requirements set forth in this Plan.
- When feasible and appropriate, the District shall arrange for virtual visits with parents in lieu of physical visits to their child’s campus.

### **Virtual Instruction**

- Even during the emergency pandemic, students are required by state law to attend 90% of the days a course is offered in order to be awarded credit for the course and/or to be promoted to the next grade.
- Given the serious concerns regarding public health, **student attendance may be earned through the delivery of virtual instruction or a hybrid of virtual instruction and on-campus instruction.**
- Any parent may request that their student be offered virtual instruction.
- If a parent or guardian wishes to arrange for their child to enroll in virtual instruction, he/she must notify the District of this decision no later than two weeks before the first day of school. If you wish to commit your student to virtual instruction, you should contact the campus of your student.

Parents have the right to move their student from virtual instruction to on-campus instruction, and vice-versa. However, the District may set certain rules regarding those transitions.

- A parent may request a change to a student's instructional environment at the end of each regular grading period. The District will consider if such transition will be beneficial to the student's instructional quality in determining whether the request is approved.

## **Extracurricular Activities**

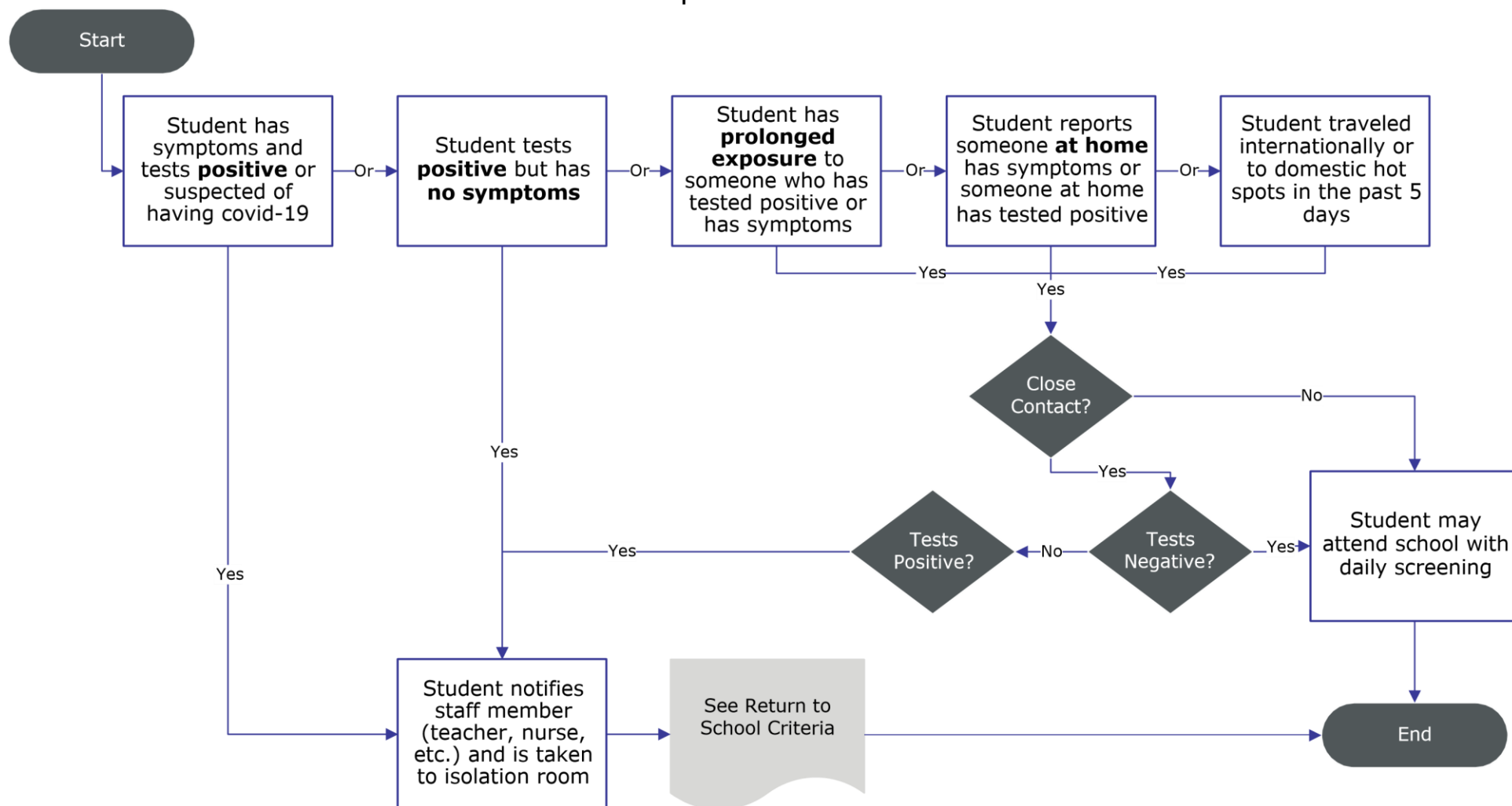
- Athletic practices, performances, and contests will be conducted according to safety protocols provided by the District, UIL, TEA, and other state authorities. This includes staff member and student screening, sanitation, locker room usage, travel, spectator attendance, etc.
- Hand sanitizer and/or handwashing stations will be made available in extracurricular facilities and all equipment will be sanitized on a regular basis.
- Locker room use will be determined by TEA and UIL. If locker room use is permitted by the relevant authorities, rules regarding face coverings and social distancing will be enforced.
- For those clubs or organizations that typically meet after regular school hours, such activities may occur in accordance with the health protocols contained in this Plan.
- Extracurricular activities are limited to students that are enrolled in CISD. Students who are temporarily quarantined are still eligible to participate in extracurricular activities following their release from quarantine.





# Crane ISD Flowchart for COVID-19

To be considered exposed to COVID-19, you need to have prolonged close contact with a person who has the virus. Close contact includes living in the same household, caring for a sick person with the virus, being within 6 feet of a sick person with the virus for a cumulative duration of 15 minutes without the use of a face covering, or being in direct contact with secretions from the sick person.



## RETURN TO SCHOOL CRITERIA

- At least 3 days (72 Hours) have passed since recovery (no fever without the use of fever-reducing medications)
- You have improved in respiratory symptoms (cough, shortness of breath, etc.)
- At least 10 days have passed since symptoms first occurred
- "Close contact" includes being directly exposed to infectious secretions (e.g., being coughed on while not wearing a mask) or being within 6 ft. for a cumulative duration of 15 minutes while not wearing a mask

## IMPORTANT INFORMATION

- Determine last date student was physically present at school, the time the employee was within six feet or less of another individual
- Determine all areas that may have been exposed within the past 72 hours
- Close off areas used by employee
- Disinfecting protocols
- Determine additional closure response and communication if positive

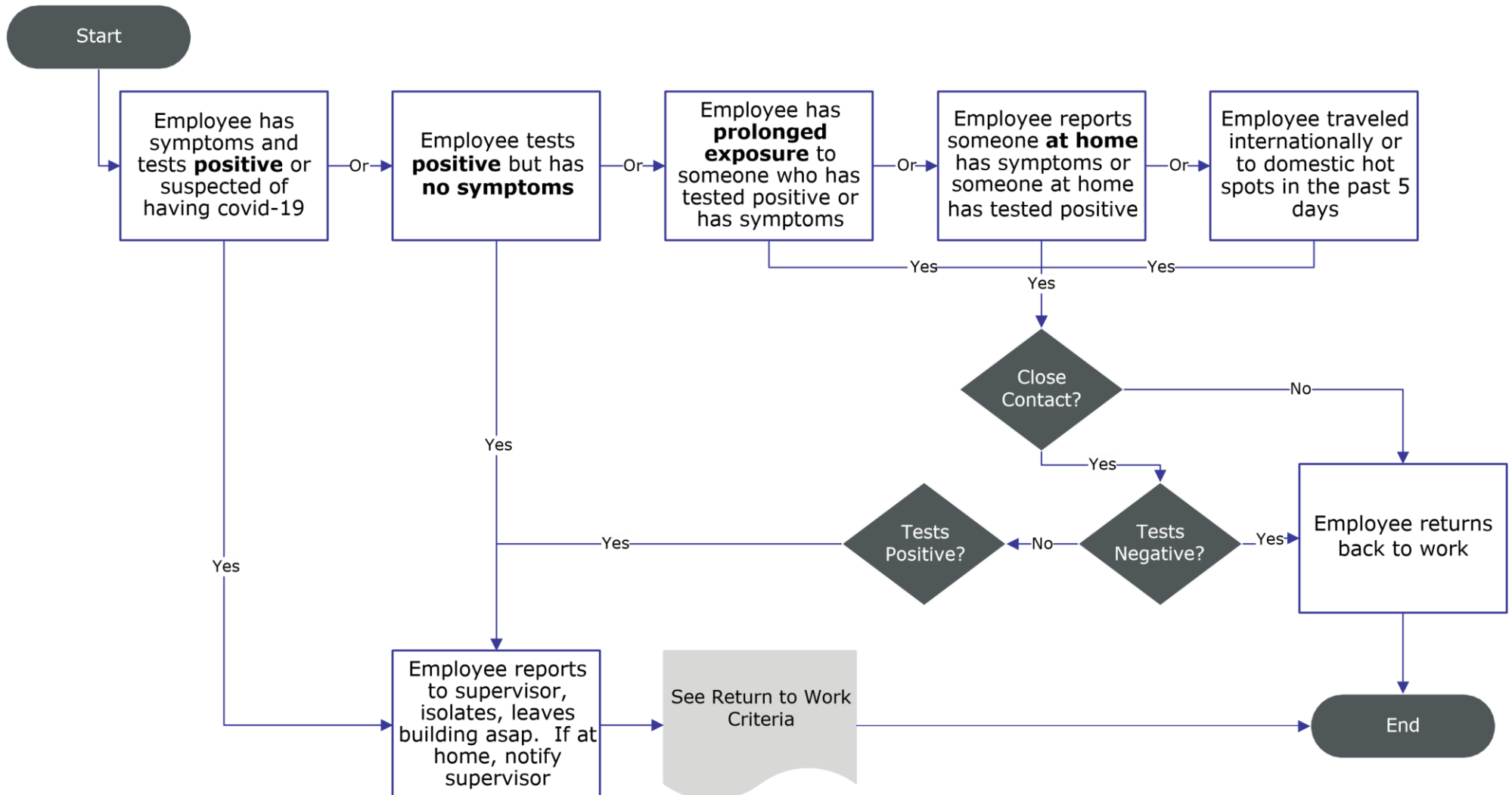
## SYMPTOMS OF COVID-19

- |  |  |
|--|--|
| <ul style="list-style-type: none"><li>• Fever/Chills/Headache</li><li>• Cough</li><li>• Shortness of breath/difficulty breathing</li><li>• Fatigue</li><li>• Muscle/body aches</li></ul> | <ul style="list-style-type: none"><li>• New loss of taste or smell</li><li>• Sore throat</li><li>• Congestion/ runny nose</li><li>• Nausea/vomiting</li><li>• Diarrhea</li></ul> |
|--|--|



# ***CRANE ISD Employee/Workplace Flowchart for COVID-19***

To be considered exposed to COVID-19, you need to have prolonged close contact with a person who has the virus. Close contact includes living in the same household, caring for a sick person with the virus, being within 6 feet of a sick person with the virus for a cumulative duration of 15 minutes without the use of a face covering, or being in direct contact with secretions from the sick person.



## RETURN TO SCHOOL CRITERIA

- At least 3 days (72 Hours) have passed since recovery (no fever without the use of fever-reducing medications)
- You have improved in respiratory symptoms (cough, shortness of breath, etc.)
- At least 10 days have passed since symptoms first occurred
- "Close contact" includes being directly exposed to infectious secretions (e.g., being coughed on while not wearing a mask) or being within 6 ft. for a cumulative duration of 15 minutes while not wearing a mask

## IMPORTANT INFORMATION

- Determine last date employee was physically present at school, the time the employee was within six feet or less of another individual
- Determine all areas that may have been exposed within the past 72 hours
- Close off areas used by employee
- Disinfecting protocols
- Determine additional closure response and communication if positive

## SYMPTOMS OF COVID-19

- |  |  |
|--|--|
| <ul style="list-style-type: none"><li>• Fever/Chills/Headache</li><li>• Cough</li><li>• Shortness of breath/difficulty breathing</li><li>• Fatigue</li><li>• Muscle/body aches</li></ul> | <ul style="list-style-type: none"><li>• New loss of taste or smell</li><li>• Sore throat</li><li>• Congestion/ runny nose</li><li>• Nausea/vomiting</li><li>• Diarrhea</li></ul> |
|--|--|