

Rural Schools

Denio, Kings River, Orovada and Paradise

Humboldt County School District

REOPENING PLAN



Every child will graduate; beginning with Kindergarten, each will be prepared and confident to succeed.

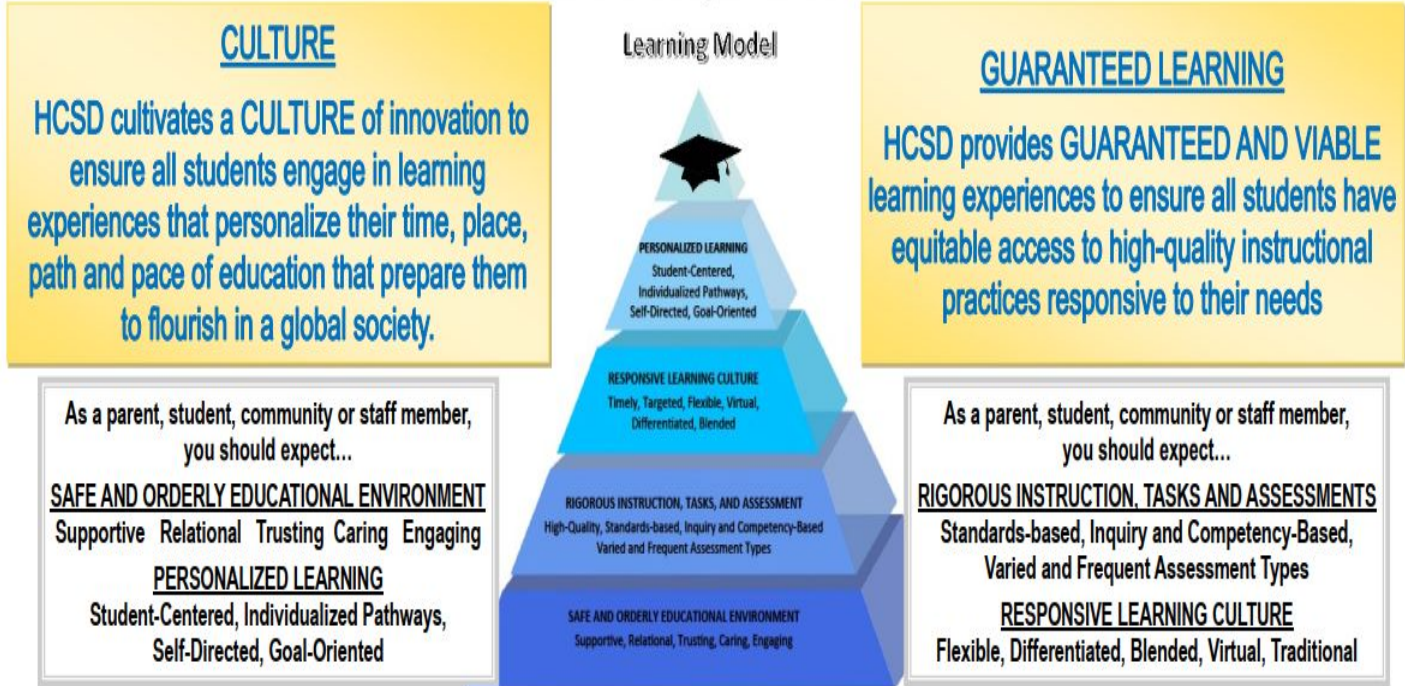
As a community, we will instill in every child a vision to graduate, providing a comprehensive, safe, challenging and effective learning environment that prepares students to be career and college ready.

Table of Contents	Page(s)
Commitments and Priorities	2
School Update	3-4
Reopening Committee Considerations	5
<u>Introduction</u>	6
<u>Phase III Plan</u> (GREEN)	7-10
<u>Phase I Plan</u> (RED)	10-11
<u>Transition between Phases</u>	12
<u>Short Term Closure</u>	12
Appendix <ul style="list-style-type: none"> • <u>Self Screening Procedures</u> • <u>Resources</u> 	13-16

HCSD Commitments and Reopening Priorities

HCSD Collective Commitments

Humboldt County School District



ELEVATE

Revised 5.11.20

- ★ Ensure the safety and well-being of all HCSD students and staff
- ★ Promote equitable learning opportunities including multiple access points for all HCSD students

School Update:

Dear Parents,

As we begin the 2020-21 school year we are faced with many challenges during these uncertain times. We recognize that you have concerns and questions and we are doing our best to meet the needs of our students and families. On July 28th the HCSD Board of Trustees approved district wide plans for two phases for rural schools as mandated by the Nevada Department of Education and the Governor. Rural school administrators have developed plans for these two phases that follow all directives for the health and safety of our students and staff. The specifics for each of these phases are included in this plan. Safety remains a priority, while ensuring students receive a quality education.

Below you will find the two plans:

- **Phase 3- School Open with all students**
 - As of 8/16/20 we will be in a Phase 3, all Rural students will return to school. Under this phase we will return to a full day schedule including recesses and specialty classes. Schedules will be more typical with safety precautions observed per the Nevada Department of Education and the Governor's directives.

- **Phase 1- Distance Learning**
 - During this phase all students will receive instruction through Distance Learning (online). Distance Learning will be conducted by the students' general education teacher.

At this time, we must operate under the Governor's Directive (028) which mandates that all students and staff must wear face coverings while attending school. There are specific requirements for exceptional circumstances that may allow for other face coverings in place of masks.

We will do our best to provide consistency for our students through each phase. It is important to note that we may be moving from phase 3 to phase 1 depending on the situation with COVID-19 cases in our area. We will provide the best possible education and support for our students and work to make the transition from phase to phase as smooth as possible.

Communication is key during these unprecedented times. Please call our office to ensure we have correct phone numbers and addresses so we can get information to you as quickly as possible. We also welcome phone calls and emails and will be happy to discuss personal issues outside of social media.

This will be a challenging year for our rural families and staff members. Please know that we have your health and safety in mind and are poised to meet the educational needs of our students. Please do not hesitate to contact us with any questions.

Sincerely,

Jennifer St. Germain
Principal Orovada, Kings River

jstgermain@hcsdnv.com

Laura Molini
Principal Denio, Paradise

Lmolini@hcsdnv.com

Reopening Committee Considerations

Committee Role

The reopening committee was tasked with developing three plans based on state requirements. Plans were to be developed based on three potential scenarios. For purposes of developing Humboldt County School District's plans, each were based on various phases of reopening:

Phase I: Full closure of school (100% Distance Learning)

Phase III: Full return to traditional school

Committee Members

The Reopening Committee, a group of local stakeholders including parents, educators, city officials, local healthcare providers, faith-based organizations and school board members, worked collectively to build the HCSD Reopening Plan for the 2020-2021 school year. Two subcommittees, safety and academics, further developed each component of the plan.

HCSD District Leadership: Dr. Dave Jensen, Dawn Hagness

School Board: Glenda Deputy (President)

HCSD Administrators/Directors: Joe Brown, Leslie Molina (McD), Noel Morton, Amy Nelson, Kelly Novi (WJHS), DeAnna Owens, Lisa Weber (SHE)

Chartwells: Melissa Holden (Director of Dining Services)

City of WMCA: Dave Garrison (Chief of Police)

HCSD Classified Staff: Jennifer Brady (nutrition/HCSSO President), Lisa Lloyd (librarian)

HCSD District Employees: Laura Jensen (Nutrition services), Marian Tyree (Chief Nurse), Anthony Valenzuela (Transportation Director)

HCSD Elementary Teachers: Nikki Bengochea (4th grade), Maryjo Dufurrena (rural K-8th), Janice Lester (PreK), Jaime Peterson (5th/6th), Malinda Riemersma (Technology/HCEA President), Lori Seidlitz (4th)

HGH: Tiffany Love (HGH Chief Operating Officer)

HCSD Secondary Teachers: Chelsea Cabatbat (Special Ed.), Phillip Kendall (Science), Diana Padua (Alt. Ed.)

Parents: Lucinda Allen, Ricarda Braatz, Ester Mendoza,

Faith based organization: Brad Borowski (D3 Pastor)

Committee Considerations

The committee members were in favor of returning in Phase III with extra safety precautions. According to survey results, most HCSD parents and families expressed the same goal of being fully opened this fall. The committee was tasked with creating plans that identified three (3) phases as mandated by Governor Directive 022. The HCSD Committee met throughout June and July.

Board of Trustees Approval

The plan was presented and approved by the HCSD Board of Trustees on July 28, 2020. Through several meetings, discussions, drafts and feedback, the following phases are presented for the 2020-2021 school year and will be implemented based on the current phase in which Nevada is operating.

INTRODUCTION

HCSD Calendars 2020-2021 (All Phases)

- Humboldt County School District has revised the 2020-2021 school calendar and rural school calendar to ensure staff have the time to prepare for all phases within this plan
- Student instruction will begin on September 8th, 2020, with district wide professional development for staff occurring during the week of August 31, 2020
- HCSD 2020-2021 [Rural Calendar](#)
- HCSD Rural Schools www.hcsdnv.com

Academic Options offered by Humboldt County School District

- Rural K-8 Schools
 - Instruction will be provided based on the approved phase plan as outlined in this document, Phase 3 fully open with safety protocols in place.
- Enroll in HCSD Distance Education Program
 - HCSD has a process that requires all students and families interested in distance education to contact their school principal to begin the process
 - Each site principal has criteria in which they utilize to ensure that distance education is the right learning opportunity for the student applying
 - There is an application process and limited enrollment is available
 - If approved, recognize you must have internet access and you can opt to use your own device or check a chromebook out from your zone school
 - Documentation will be necessary for students who need distance education accommodations based on medical needs or if at risk for serious illness from COVID-19
 - The HCSD Distance Education program is NOT the same program as the “phase 1” plan as outlined below if your student is enrolled in a brick and mortar school
 - Once enrolled, Elementary students in K-6th will be required to stay in the DE program for 9 weeks. If after two weeks of enrollment a student demonstrates the inability to complete assignments they will be transitioned back to their zoned rural school.
- Based on individual family circumstances, parents may consider Home School or Charter School options

Social Emotional Learning Strategies



- All staff are responsible for ensuring that Social Emotional Learning supports are in place and woven together with all facets of the student learning: EVERYONE in all phases.

Communication Strategies

- HCSD will provide ongoing communication to all HCSD stakeholders through social media to include Facebook and district/school websites, local newspaper and radio stations and any [other forms](#) of communication as deemed appropriate
- It will be important that parents/guardians to update their contact information when it changes so that schools can provide the most recent information

Family Engagement

- It is vital that during Phase I, parents/guardians and HCSD staff work as a team to continue to provide equity and guaranteed learning to all HCSD students. In order to do this, HCSD will have materials and resources available on the HCSD website.

PHASE III (Green)

Full return to traditional school with safety protocols in place (normal operations)

Hybrid model where students engage in a combination of learning from home and school. Due to all rural school enrollment numbers Phase I will operate using the same procedures as indicated in phase III.

SAFETY - Phase III

PPE Strategies and Screening

PPE Strategies

- HCSD will provide one reusable cloth mask for every student and employee
- Nevada Department of Health guidance on Social Distancing
 - Six feet social distancing for High School Students and Staff
 - Three feet social distancing for Elementary and Middle Schools
- Masks/Face Shields are **required based on the Governor Sisolak's Declaration of Emergency [Directive 028](#)** for students and employees
 - "Face covering" is defined as a covering that covers a person's nose and mouth
 - All K-12th grade students ***must*** wear ***cloth face coverings*** while on school buses, in school buildings, or on school campuses unless approved for an exemption as follows:
 - Students who are medically fragile as documented in an existing IEP or 504
 - OR**
 - Parents who can provide documentation from a medical provider that they are exempt because they cannot wear a face covering due to a medical condition or disability, or who are unable to remove a mask without assistance.

- If a student is exempt based on #1 or #2 above, then the student must wear a non-restrictive alternative such as a face shield.
 - For non-exempt students, plastic face shields are **not** an allowable substitute for cloth face coverings and must be accompanied by a fabric face covering if worn.
- Any person exhibiting flu-like symptoms must wear a mask until leaving campus
- Establish and maintain hand sanitizer dispensers at key locations in the building and require regular hand washing schedules by classroom
- Each school will identify an isolation location for sick employees or students
- Post [Stop The Spread](#) in classrooms and other school environments

Student/Family/Staff/Volunteer Self-Screening Procedures (please review [Screening Procedures](#) found in appendix) There will be no screening at the doors of the school.

Classroom and School Environment

Classroom Environment

- Classrooms are scheduled to operate at 100% capacity
- Students and employees trained in and integrate handwashing, respiratory etiquette and mask use to mitigate exposure
- COVID cleaning procedures will be in place daily
 - Disinfect desks, keyboards, and screens at appropriate transitions
 - Custodial employees routinely clean highly touched surfaces in evenings
- Avoid and discourage sharing of food and utensils

School Environment

- **Office Strategies And Other Non-Instructional Spaces**
 - Nevada Department of Health guidance on Social Distancing
 - Six feet social distancing for High School Students and Staff
 - Three feet social distancing for Elementary and Middle Schools
 - Disinfect surface areas regularly
 - Hand sanitizer available
- **Hallways**
 - During transition times students will be asked to follow all safety procedures included in the PPE strategies
- **Bathrooms**
 - Individual schools will identify bathrooms that will include designating bathrooms for specific classes or students to use when on school campus
- **Visitors**
 - Limit visitors to parents, preferably by appointment
 - All other visitors must prearrange with the site administrator

Gatherings

- All school environments at 100% capacity
- Students will be discouraged from congregating in large groups

- **Nutrition-Cafeteria**
 - [Nutrition Services Information](#)
 - Students eating cold lunch are encouraged to bring disposable lunch items
 - Use of hand sanitizer at start of lunches

- **Transportation**
 - Transportation resumes for K-12 students
 - Additional cleaning protocols in place

ACADEMIC - Phase III

Schedule, Curriculum and Learning Environment

Schedule

- Rural schools will maintain 4 day school schedule
- School schedules can be accessed at www.hcsdnv.com

Learning Environment

- Conventional grading scale and report card grades assigned
- Attendance operates under normal HCSD procedures

Curriculum

- HCSD required curriculum
 - All staff will utilize HCSD approved curriculum
 - All instructional employees will utilize HCSD approved curriculum, this includes Eureka Math and Wit and Wisdom, along with supplements.

- **Technology**
 - Internet access for families
 - Based on available revenues, HCSD is currently working on scenarios to assist families that do not have internet access
 - Chromebook Distribution/Check-Out
 - Chromebooks will be distributed/checked out to students at each site
 - Parents and students must complete the required forms in online registration or a paper copy received from the office prior to distribution
 - Chromebook Collection/Check-In
 - Chromebooks and chargers must be returned when requested or when a student terminates enrollment
 - Students who are withdrawn, expelled, or terminate enrollment for any reason must return their Chromebook prior to the date of termination

- Chromebooks are the property of HCSD, and students are responsible for returning them in reasonable condition and may be charged a repair fee (per repair) not to exceed the replacement cost of \$300

- **Co-Curricular and Extra-Curricular Events**

- Follow established District & NIAA guidelines

PHASE I (Red)

Virtual learning and full school closure for students/Staff on site with social distancing

SAFETY - Phase I

PPE Strategies and Screening

PPE Strategies

- Masks/face shields required for staff
 - Masks required if mandated by state official order
 - Medical exemptions, in accordance with state guidance, will be granted
 - Masks are not required when not in contact with other employees
- [Procedures outlined in Phase III](#)

School Environment

- [School Environment Procedures outlined in Phase III](#)
- Phase I limits students being on school campus

Nutrition

- HCSD will follow all Chartwells nutrition safety guidelines for meal preparation, meal service and meal environments
- Meal service will be provided at pick-up location at various sites throughout the community (schedule TBD)

ACADEMIC - Phase I

We recognize the hardship that full school closure creates for families. In order to ensure equity and guaranteed learning, it is imperative that we provide learning that can transition from a full virtual learning environment to the hybrid and in-school full time phases.

Curriculum and Learning Environment

Curriculum

- HCSD required curriculum
 - All staff will utilize HCSD purchased and approved curriculum
 - Course content delivered via a combination of learning packets, electronic platforms for virtual teaching and communication such as Google classroom and Zoom

Learning Environment (Virtual)

- **Attendance**
 - Attendance requirements for virtual learning will be determined by the Nevada Department of Education, and HCSD will follow all attendance requirements
- **Grading**
 - Conventional grading scale and report card grades assigned. The pass/fail method utilized during remote emergency learning in spring of 2020 **will not be** in place moving forward
- **Instructional Method**
 - All HCSD teachers will utilize an online learning platform such as Google Classroom to assign and track student assignments
- **Technology**
 - **Technology**
 - Internet access for families
 - Based on available revenues, HCSD is currently working on scenarios to assist families that do not have internet access
 - Chromebook Distribution/Check-Out
 - Chromebooks will be distributed/checked out to students at each site
 - Parents and students must complete the required forms in online registration or a paper copy received from the office prior to distribution
 - Chromebook Collection/Check-In
 - Chromebooks and chargers must be returned when requested or when a student terminates enrollment
 - Students who are withdrawn, expelled, or terminate enrollment for any reason must return their Chromebook prior to the date of termination
 - Chromebooks are the property of HCSD, and students are responsible for returning them in reasonable condition and may be charged a repair fee (per repair) not to exceed the replacement cost of \$300

TRANSITION BETWEEN PHASES

In the event that an individual HCSD school or the entire school district has to transition from one phase to another, the following procedures will be followed:

- **Phase Transition**
 - Parents/guardians will be notified by the school administrator that a transition of phases will occur and will include reminders of the schedule your student is on within the new phase schedule
 - The new phase will be in effect the day after the notification occurs
 - Review all plans for specific details

SHORT TERM CLOSURE

In the event that a significant outbreak is confirmed within a HCSD school community, the following procedures will be effective immediately.

School Confirmed Outbreak, Regardless of Community Transmission

- A significant outbreak will be determined by the Humboldt County Health Department
 - If there is a significant outbreak of confirmed COVID, the following will take effect:
 - Humboldt County School District will coordinate with local public health and follow guidance for developing a course of action
 - If it is determined there will be school short term closure due to a potential COVID exposure, HCSD will also cancel extracurricular group activities, school-based afterschool programs, and large events
 - Students will be provided instructional materials to continue their academic progression
 - School facilities will be disinfected according to CDC and local public health official guidance

APPENDIX

HCS D Self Screening Procedures

SAFETY- Screening

Student/Parent/Staff Self-Screening Procedures:

All students/families/staff shall ask themselves the following questions daily before attending school:

- Since your last day of school have you had any of these symptoms that are not attributable to another condition? [*Stop the Spread*](#)
 - Individuals who have symptoms of acute respiratory illness are to notify their school and stay home until they are free of fever and any other symptoms for at least 24 hours, without the use of fever-reducing or other symptom-altering medicines (e.g. cough suppressants). A fever is considered having a temperature of 100.4° F or greater using an oral or touchless thermometer.

Individuals demonstrating any of the symptoms below will be sent home for the safety of all.

- Fever or Chills
- Cough
- Shortness of breath or difficulty breathing
- Fatigue
- Congestion or Runny Nose
- Nausea, Vomiting or Diarrhea
- Muscle or Body Aches
- Headache
- Sore throat
- New loss of taste or smell
- Are you ill, or caring for someone who is ill?
 - Individuals who are well but who have a sick family member at home with COVID-19 should stay home.
 - In the 10 days before you felt sick, did you:
 - Have contact with someone diagnosed with COVID-19?
 - Live in or visit a place where COVID-19 is spreading?
- If the answer is YES to any of these questions:
 - Do not attend school.
 - Contact your school to notify your Individual's need to be absent.
 - Contact your healthcare provider.
 - If you are able to manage symptoms at home, you may return to school when the following are true:
 - At least 24 hours have passed since recovery- meaning that it has been 24 hours of the individual having no fever (measured temperature of 100.4 F or greater) without the use of medications and an improvement in respiratory symptoms like cough and shortness of breath; **AND**
 - At least 10 days have passed since the individual first displayed symptoms of COVID-19 **OR** It has been at least 24 hours since recovery **AND** a health care

provider has certified that the student does not have suspected or confirmed COVID-19.

- **Students in quarantine will be provided instructional materials to continue their academic progression.**
- In the case that a staff member is identified they will leave school campus and not return until the following are true:
 - AND**
 - In the case that a student is identified at school as having a fever of 100.4 or above, the child will be placed in a supervised isolation area and parents/guardians will be required to pick their child up from the school within 30 minutes. Please refer to your child's school plan for pick up location. The student may not return to school until the following are true:
 - At least 24 hours have passed since recovery- meaning that it has been 24 hours of the individual having no fever (measured temperature of 100.4 F or greater) without the use of medications and an improvement in respiratory symptoms like cough and shortness of breath; **AND**
 - At least 10 days have passed since the individual first displayed symptoms of COVID-19 **OR** It has been at least 24 hours since recovery **AND** a health care provider has certified that the student does not have suspected or confirmed COVID-19.

Procedures and Protocols For A Confirmed COVID-19 Case Among Students/Family/Staff:

Student/Family/Staff Responsibilities:

- If you have tested positive or have been confirmed to have COVID-19 or are living in a home with someone who has tested positive for COVID-19:
 - Do not attend school.
 - Notify your school of the positive test and your student's need to be absent.
 - Individuals who have tested positive for COVID-19 or who have not been tested but were directed to stay home from school may return to school under the following conditions:
 - At least 24 hours have passed since recovery- meaning that it has been 24 hours of the individual having no fever (measured temperature of 100.4 F or greater) without the use of medications and an improvement in respiratory symptoms like cough and shortness of breath; **AND**
 - At least 10 days have passed since the individual first displayed symptoms of COVID-19 **OR** It has been at least 24 hours since recovery **AND** a health care provider has certified that the student does not have suspected or confirmed COVID-19.

Principal Responsibilities:

- Notify the Health Assistant that you have a student/staff member who has tested positive for COVID-19. Health Assistant will contact the Chief Nurse.
- In collaboration with Health Assistant and Chief Nurse, assist with Contact Tracing and investigation to determine if the student/staff member contracted COVID-19 at school as needed.
- In collaboration with the Chief Nurse, assist the District with the implementation of the Pandemic Operation Plan For Confirmed Case in School.

- Principal, will notify school community members (staff, students) of their possible exposure to COVID-19 in the classroom through a memo while maintaining confidentiality as required by the Family Educational Rights and Privacy Act (FERPA) Health Insurance Portability and Accountability Act (HIPAA) and the Americans with Disability Act (ADA).

District Responsibilities:

- Chief Nurse will contact the Superintendent to notify them of student/staff member testing positive for COVID-19 and to determine an appropriate course of action based on the specific situation.
- Chief Nurse, in collaboration with building principal, will assist with Contact Tracing and investigation to determine if the student/staff member contracted COVID-19 in the school as needed
- In collaboration with building principal, implement Pandemic Operation Plan For Confirmed Case In School in collaboration with appropriate personnel.

Resources

- [COVID-19 Guidelines During Outbreaks or Suspected Outbreaks in School Settings](#)
- [American Association of Pediatrics](#)
- [CDC Guidelines](#)
- [HCSD Board of Trustees Reopening Powerpoint](#)
- [Humboldt County School District website](#)
- [Nevada's Path Forward \(NV ReOpening Guidance\)](#)
- [State of Nevada Department of Education Resources Related to COVID-19](#)