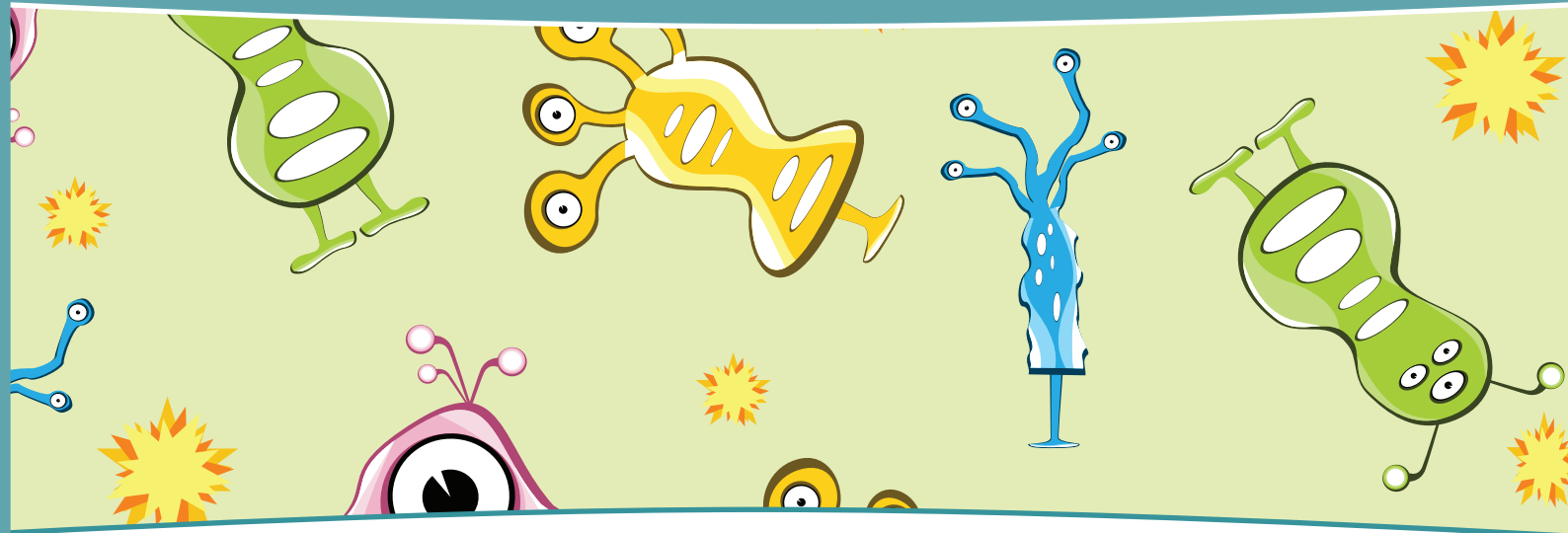


Catch Up Waldo County

Walk-in anytime during regular business hours

Waldo County General Hospital Primary Care offices offer walk-in immunization and flu vaccine access for our pediatric and adult patients. Please stop in to any of the practices listed below during regular business hours to receive your immunization or vaccine.



WCMP Family Medicine
207-338-1120

WCMP Internal Medicine
207-505-4304

WCMP Primary Care
207-505-4567

**WCMP Arthur Jewell
Community Health Center**
207-722-3488

**WCMP Donald S. Walker
Health Center**
207-589-4509

**WCMP Lincolnville Regional
Health Center**
207-236-4851

**WCMP Stockton Springs
Regional Health Center**
207-567-4000



Waldo County General Hospital
MaineHealth

wcgh.org