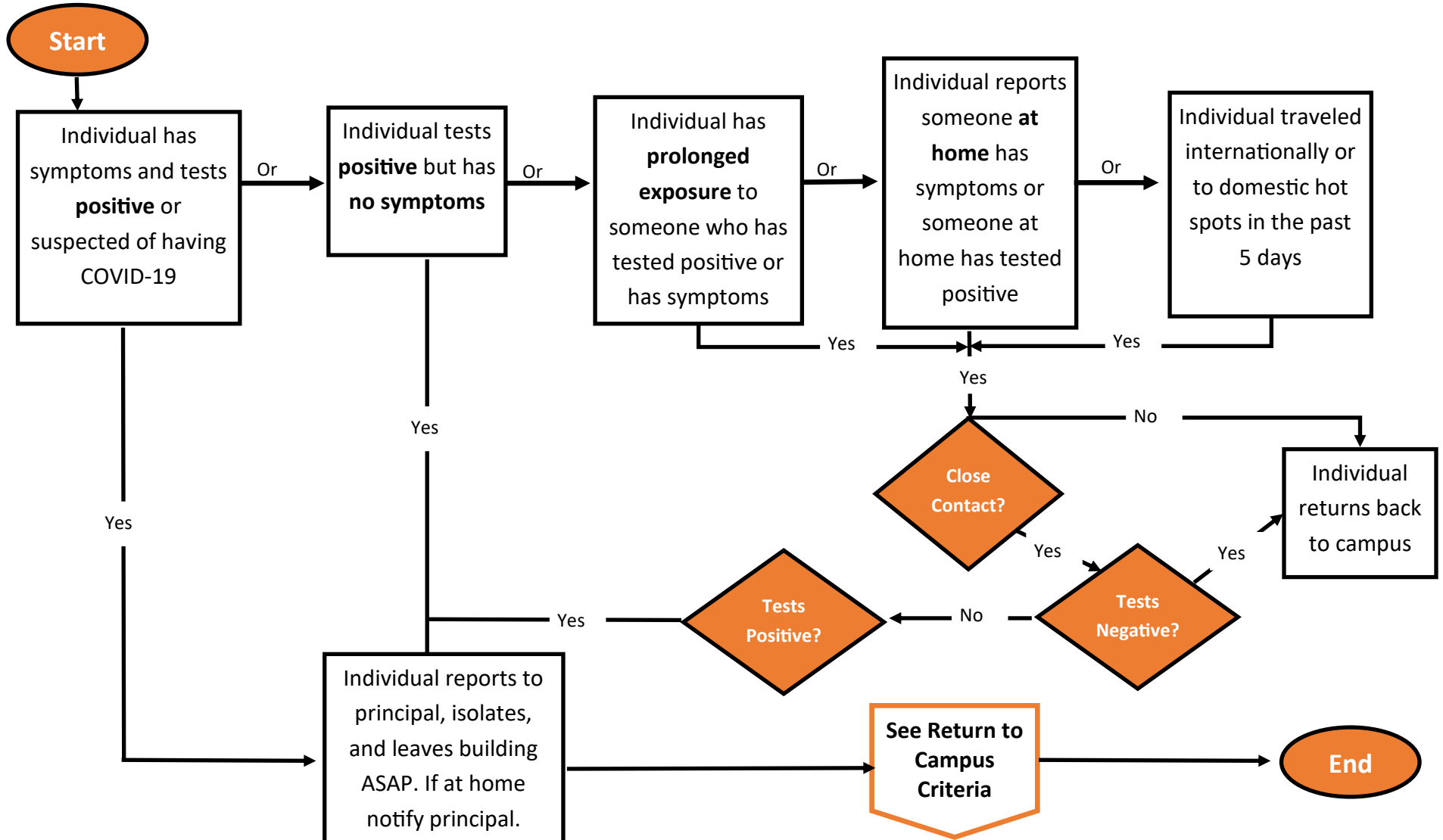




Gary ISD Employee/Student Flowchart for COVID-19

To be considered exposed to COVID-19, you need to have prolonged close contact with a person who has the virus. Close contact includes living in the same household, caring for a sick person with the virus, being within 6 feet of a sick person with the virus for at least 15 continuous minutes without the use of a face covering, or being in direct contact with secretions from the sick person.



Return to Campus Criteria

- At least 1 day (24 hours) have passed since recovery (no fever without the use of fever reducing medications)
- You have improved in respiratory symptoms (cough, shortness of breath, etc)
- At least 10 days have passed since symptoms first occurred
- “Close contact” includes being directly exposed to infectious secretions (e.g., being coughed on while not wearing a mask) or being within 6 ft for a duration of 15 minutes while not wearing a mask—**Requires Full 14 days**

Important Information

- Determine last date Individual was physically present at school, the time the Individual was within six feet or less of another individual
- Determine all areas that may have been exposed within the past 72 hours
- Close off areas used by Individual
- Disinfecting protocols
- Determine additional closure response and communication if positive

Symptoms of COVID-19

- Fever or chills
 - Cough
 - Shortness of breath or difficulty breathing
 - Fatigue
 - Muscle or body aches
 - Headache
 - New loss of taste or smell
 - Sore throat
 - Congestion or runny nose
 - Nausea or vomiting
 - Diarrhea
- People with these symptoms may have COVID-19***