

BELEN MIDDLE SCHOOL



Mark Your Calendars:

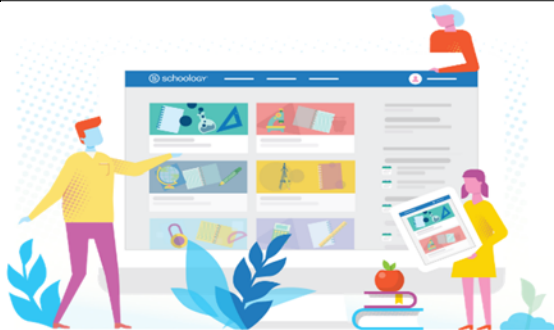
**REMOTE LEARNING BEGINS
MONDAY, AUGUST 31st**

**KEEP US UPDATED
SO WE CAN KEEP YOU UPDATED**

Has Your Phone Number Changed?
Do You Have a New Email Address?
Have You Moved?

Please contact us at 966-1600 so we can update
your contact information.

**THIS HELPS US REACH YOU WHEN
IT MATTERS MOST**



SCHOOLY
Bringing Our Community Together

Belen Schools will be using Schoology for Remote Learning. Schoology is a virtual learning environment that allows users to create, manage, and share academic content. Teachers can post daily reminders about assignments and homework, create lessons and provide virtual online instruction.

All students will receive a Schoology account for Remote Learning. Advisory teachers will be in contact with families prior to school starting to help you get started.

GET THE LATEST NEWS AND UPDATES!!

It's everything Belén Schools,
in your pocket.

Cafeteria Menus · Events · Staff Directory · Alerts · Athletics



Belén Consolidated Schools

Download on the
App Store

GET IT ON
Google Play

DOWNLOAD THE BELEN SCHOOL APP

INFORMATION ABOUT DEVICES

We are currently working to determine device needs for families. If you have not filled out our Student Information Survey, please do so.

[https://docs.google.com/forms/d/e/1FAIpQLSdFanC1A1pYg6j7-4WoA7uhA1OgWtrjTzDRj3pLYaDk0Or7Bw/vi
ewform?vc=0&c=0&w=1](https://docs.google.com/forms/d/e/1FAIpQLSdFanC1A1pYg6j7-4WoA7uhA1OgWtrjTzDRj3pLYaDk0Or7Bw/viewform?vc=0&c=0&w=1)

We will begin contacting families about devices the week of August 24th.

SCHEDULE CHANGE INFORMATION

If your student is interested in a schedule change, please go to <https://www.beleneagles.org/o/bms/documents> to download a copy of our Schedule Change Request Form. Completed forms can be emailed to romeroja@beleneagles.org.

**Space in classes is currently limited and schedule changes may not be processed until after school starts. Changes will be made based on availability.