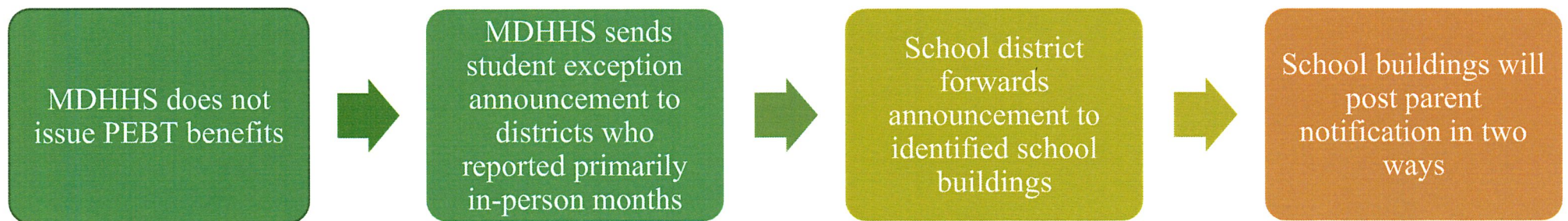


# P-EBT Student Exception Announcement Activities

For months that a school reported primarily in-person, a parent/guardian has the option to request an individual review of their student's circumstances. This process is called a reconsideration.

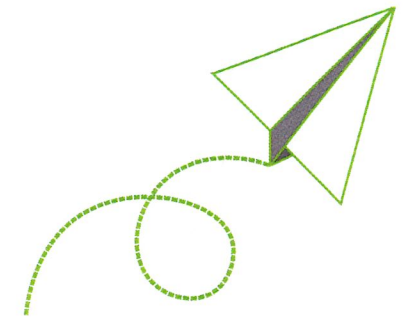
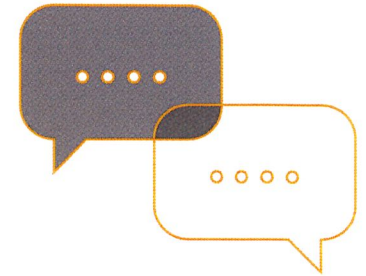
Example - Building began the 2022/2023 school year on Sept 7 with fully in-person learning. With news of COVID 19 cases increasing, one student opted to learn fully remote beginning Sept 17:

- Building reports primarily in-person modality for September



## Suggested Notification Methods

Website	Post the entire message on the building homepage
Facebook	Share on your Facebook page
Twitter	Post on your Twitter page
Building Newsletters	Send information via your E-newsletter
Parent Notification System	Send an e-mail to all building parents or robocall
Printed postcard/flyer	Distribute to parents
Building Posting	Post on entrance doors





## Guiding

### parents/guardians

#### When should a parent or guardian request reconsideration?

If they have a free/reduced lunch student who attended class partially or fully virtual in a month shown on their notice due to a Covid-19 related absence

#### What information will a parent or guardian need from the school?

A parent or guardian will need to provide proof that shows how their student received instruction for the month(s) and number of days on the notice. Schools can fill out section three of the reconsideration form to meet this requirement. If schools elect to provide a separate document, it will need to contain the following information:

- Student's name
- The month(s) for which the parent is requesting a reconsideration
- The date the student was approved for free or reduced lunches
- A statement about how the student received instruction for that month
- Name of the school employee filling out the document
- The school employee's title, e-mail, or telephone number
- Can be completed by teacher, aide, secretary, counselor

#### Where can a parent or guardian find the form for a reconsideration?

The reconsideration form is at [www.michigan.gov/pebt](http://www.michigan.gov/pebt)

# Pandemic EBT

**Important information for parents or guardians of student's eligible for Free and Reduced Lunch at Winn Elementary School.**

## What is the Pandemic-EBT Program?

The Pandemic-EBT (P-EBT) Program provides food benefits to families with children who were not able to get free or reduced-price school meals due to COVID. You may hear about this benefit from other schools or in the media.

## Who is eligible?

Being eligible for this program will depend on what school your student attends. Eligibility for the Pandemic-EBT (P-EBT) Program can be different between schools within the same district.

## What makes a school eligible for P-EBT?

A school building is eligible only if the building has had 5 school days in a row of reduced in-person hours due to COVID (closures due to staffing shortages do not count for P-EBT benefits).

## What could make my child eligible for P-EBT?

- 1) If the school they attend is eligible for P-EBT and
- 2) If your student has applied and been approved for free/reduced lunch and
- 3) Did not receive instruction in-person for some or all the month due to COVID-19 related

absence There may be months when your student's attendance was different from what the school reported. In that case, you may be able to have your student's benefit level reconsidered. Your request to be reconsidered must be submitted by June 30, 2023. In the month(s) below your school reported primarily in-person. Your student(s) may be P-EBT eligible If your student Did not receive instruction in-person for some or all the month due to COVID-19 related absence in the following month(s):

**October 2022, November 2022, December 2022, January 2023, February 2023, March 2023, April 2023, and May 2023**

**For more information, visit [WWW.MICHIGAN.GOV/PEBT](http://WWW.MICHIGAN.GOV/PEBT) or call 1-833-905-0028.**



# Pandemic EBT

**Important information for parents or guardians of student's eligible for Free and Reduced Lunch at Shepherd Elementary School.**

## What is the Pandemic-EBT Program?

The Pandemic-EBT (P-EBT) Program provides food benefits to families with children who were not able to get free or reduced-price school meals due to COVID. You may hear about this benefit from other schools or in the media.

## Who is eligible?

Being eligible for this program will depend on what school your student attends. Eligibility for the Pandemic-EBT (P-EBT) Program can be different between schools within the same district.

## What makes a school eligible for P-EBT?

A school building is eligible only if the building has had 5 school days in a row of reduced in-person hours due to COVID (closures due to staffing shortages do not count for P-EBT benefits).

## What could make my child eligible for P-EBT?

- 1) If the school they attend is eligible for P-EBT and
- 2) If your student has applied and been approved for free/reduced lunch and
- 3) Did not receive instruction in-person for some or all the month due to COVID-19 related

absence  
There may be months when your student's attendance was different from what the school reported. In that case, you may be able to have your student's benefit level reconsidered. Your request to be reconsidered must be submitted by June 30, 2023. In the month(s) below your school reported primarily in-person. Your student(s) may be P-EBT eligible If your student Did not receive instruction in-person for some or all the month due to COVID-19 related absence in the following month(s):

**September 2022, October 2022, November 2022, December 2022, January 2023, February 2023, March 2023, April 2023, and May 2023**

**For more information, visit [WWW.MICHIGAN.GOV/PEBT](http://WWW.MICHIGAN.GOV/PEBT) or call 1-833-905-0028.**

# Pandemic EBT

**Important information for parents or guardians of student's eligible for Free and Reduced Lunch at Shepherd Middle School.**

## What is the Pandemic-EBT Program?

The Pandemic-EBT (P-EBT) Program provides food benefits to families with children who were not able to get free or reduced-price school meals due to COVID. You may hear about this benefit from other schools or in the media.

## Who is eligible?

Being eligible for this program will depend on what school your student attends. Eligibility for the Pandemic-EBT (P-EBT) Program can be different between schools within the same district.

## What makes a school eligible for P-EBT?

A school building is eligible only if the building has had 5 school days in a row of reduced in-person hours due to COVID (closures due to staffing shortages do not count for P-EBT benefits).

## What could make my child eligible for P-EBT?

- 1) If the school they attend is eligible for P-EBT and
- 2) If your student has applied and been approved for free/reduced lunch and
- 3) Did not receive instruction in-person for some or all the month due to COVID-19 related

absence  
There may be months when your student's attendance was different from what the school reported. In that case, you may be able to have your student's benefit level reconsidered. Your request to be reconsidered must be submitted by June 30, 2023. In the month(s) below your school reported primarily in-person. Your student(s) may be P-EBT eligible If your student Did not receive instruction in-person for some or all the month due to COVID-19 related absence in the following month(s):

**September 2022, October 2022, November 2022, December 2022, January 2023, February 2023, March 2023, April 2023, and May 2023**

**For more information, visit [WWW.MICHIGAN.GOV/PEBT](http://WWW.MICHIGAN.GOV/PEBT) or call 1-833-905-0028.**



# Pandemic EBT

**Important information for parents or guardians of student's eligible for Free and Reduced Lunch at Shepherd High School.**

## **What is the Pandemic-EBT Program?**

The Pandemic-EBT (P-EBT) Program provides food benefits to families with children who were not able to get free or reduced-price school meals due to COVID. You may hear about this benefit from other schools or in the media.

## **Who is eligible?**

Being eligible for this program will depend on what school your student attends. Eligibility for the Pandemic-EBT (P-EBT) Program can be different between schools within the same district.

## **What makes a school eligible for P-EBT?**

A school building is eligible only if the building has had 5 school days in a row of reduced in-person hours due to COVID (closures due to staffing shortages do not count for P-EBT benefits).

## **What could make my child eligible for P-EBT?**

- 1) If the school they attend is eligible for P-EBT and
- 2) If your student has applied and been approved for free/reduced lunch and
- 3) Did not receive instruction in-person for some or all the month due to COVID-19 related

absence  
There may be months when your student's attendance was different from what the school reported. In that case, you may be able to have your student's benefit level reconsidered. Your request to be reconsidered must be submitted by June 30, 2023. In the month(s) below your school reported primarily in-person. Your student(s) may be P-EBT eligible If your student Did not receive instruction in-person for some or all the month due to COVID-19 related absence in the following month(s):

**October 2022, November 2022, December 2022, January 2023, February 2023, March 2023, April 2023, and  
May 2023**

**For more information, visit [WWW.MICHIGAN.GOV/PEBT](http://WWW.MICHIGAN.GOV/PEBT) or call 1-833-905-0028.**