

New Town Public School District #1



HEALTH & SAFETY PANDEMIC PLAN (SMART RESTART)

New Town School Board Approved
August 6, 2020

Contents

Assumptions & Assurances 3

Resources 3

Pandemic Response Team 4

Color Phases..... 5

Instructional Models 6

Opening and Closing of Campus for Instruction 6

Individual Health and Safety Guidance 6

Health & Safety Protocols 8

Facility Accommodations & Protocols..... 10

Food Service 11

Transportation 12

Closing 12

Appendix A..... 13

Parent/Student/Teacher/District & Community Expectations 13

Note: Expectations have been significantly increased from the spring of 2020..... 13

Appendix B 15

Summary of Operational Levels During a Pandemic 15

Appendix C 18

Operational Status & Rationale 2020-21 18

Appendix D..... 19

Daily Before School Health Screening Checklists 19

Dear New Town School Families and Community,

The current pandemic has provided many challenges to our school district. Beginning in March 2020, the New Town Public School District began aggressive planning regarding the education, health and well-being of students. With help from the MHA Nation we navigated the spring together. Electronic devices were provided to all students and distance learning was provided using technology and content area packets. Food service also continued. Graduation was different for this year's graduates, and their accomplishment, perhaps a little greater due to the pandemic, was celebrated.

In the New Town area, cases of CoVID-19 have increased over the summer causing concern for everyone. The safety and well-being of students and staff is our top priority. At the same time, the importance of education cannot be overlooked. The 2020-2021 school year is scheduled to start August 19, 2020 and we will be prepared to welcome our students back and continue preparing them for the future.

School leaders have considered information provided by the North Dakota's Dept. of Instruction (DPI), Governor's Office, Council of Educational Leaders (NDCEL), and Department of Health (NDDoH). The Upper Missouri District Health Unit (UMDHU), Elbowoods Memorial Health Center and Three Affiliated Tribes have all been consulted and surveys of staff and parents were collected. At the July 28th, 2020 Special Board Meeting the board decided to continue with distance learning through at least September 18, 2020. Athletics and other school extracurricular activities have been cancelled through September 18, 2020 as well.

Expectations during distance learning will increase this fall. Students will attend real-time instruction and need to be available for on-line instruction between 8:30 am and 3:45 pm. Please review the Distance Learning Expectations (Appendix A) with each of your children. Parent/Guardian support is critical in ensuring children continue to grow academically. Clear expectations and communication are important, and we encourage parents/guardians to contact their child's teacher if there are any concerns. Teachers will be able to direct you to other resources if needed. Meal delivery will begin August 19, 2020 and continue through at least September 18, 2020.

We are hopeful that we will be able to begin on campus learning in late September. Included in this packet is our Health and Safety Pandemic Plan which was approved on August 6, 2020. This plan was developed and reviewed by a number of people during July and August. We all have learned that pandemics bring unexpected circumstances. This plan is intended to give a broad overview of how we plan to safely open our buildings when the school board approves reopening.

Please take time to review the plan carefully. We encourage everyone to ask questions and communicate their concerns by contacting the superintendent's office at (701) 627-3650. Together, we will successfully educate our children during this pandemic.

Thank you,

Marc Bluestone Sr.
Superintendent

Delvin Driver Jr.
School Board President

Assumptions & Assurances

New Town District Believes

- Safety and well-being of staff and students are our top priority. We recognize we have many multi-generational homes in our community. This needs to be considered during a pandemic.
- Well-being includes both physical and mental wellness.
- All students have the right to a free and appropriate public education and public schools play a vital role in providing education during a pandemic.
- Data driven decisions lead to the best solutions. Pandemic data from federal, state and local sources will be analyzed and used to make recommendations and decisions.
- We value input from staff, parents, students, tribal leaders and health officials. Parents and staff will be surveyed. Tribal leaders and local health officials will be consulted during a pandemic. Students and community members will also be part of our planning team.
- Our School Board will carefully consider all information and work diligently to find the best approach to meeting the educational needs of our students during the time of a pandemic.

Resources

The development of this plan was made possible with the assistance of several out-of-district resources and consultations. Special thanks to the New Town School District Administration, Pandemic Response Team (PRT) and many professional colleagues in various ND School Districts who helped shape this plan. The following is a list of the other main resources used but is not meant to be an exhaustive list. Please note acronyms as they are used throughout this document.

[Center for Disease Control and Prevention \(CDC\)](#)
[Elbowoods Memorial Health Center](#)
[Mandan, Hidatsa and Arikara Nation \(MHA\)](#)
[ND Council of Education Leaders \(NDCEL\)](#)

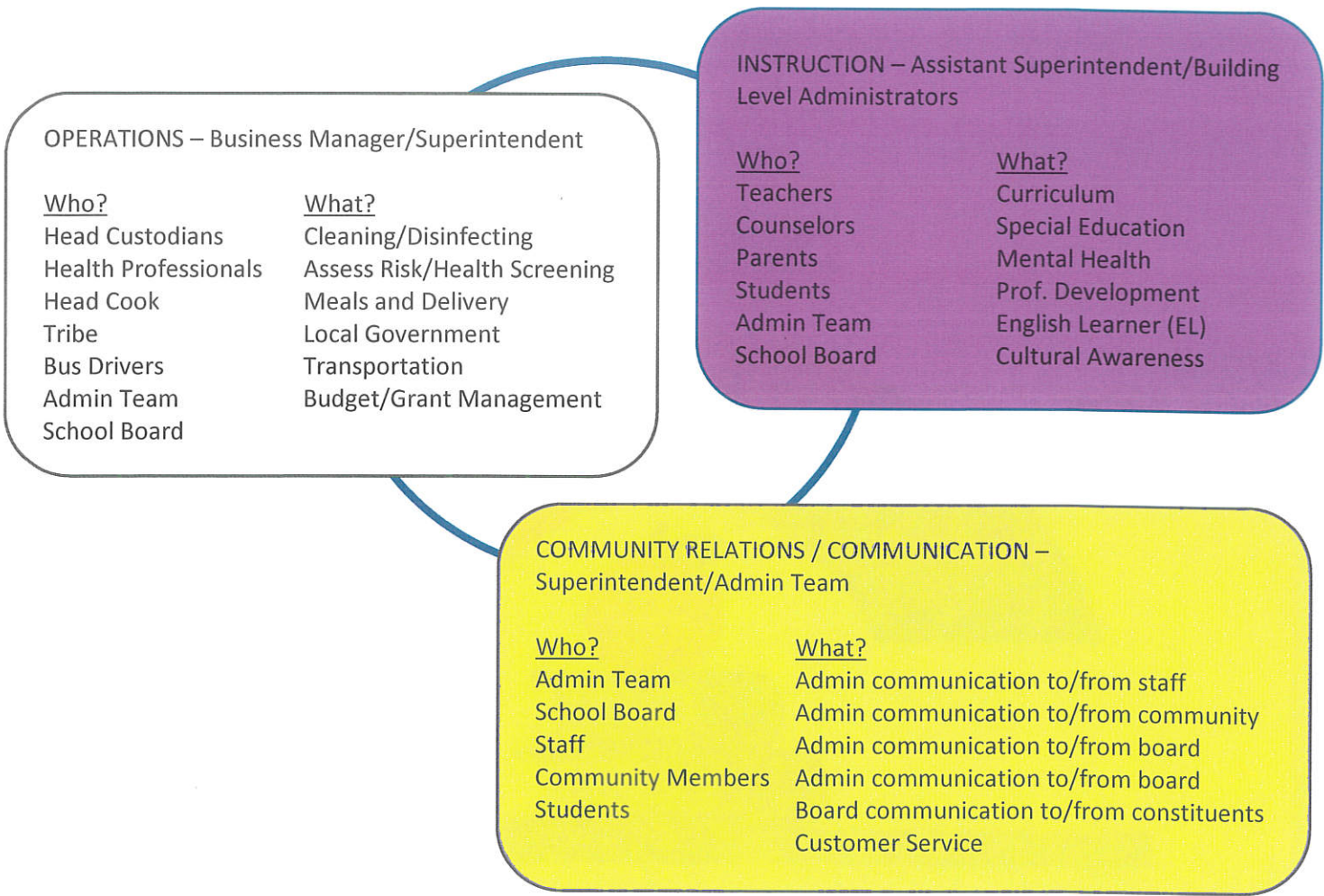
[ND Department of Health \(NDDoH\)](#)
[ND Department of Public Instruction \(DPI\)](#)
[ND Governor's Office](#)
[Upper Missouri District Health Unit \(UMDHU\)](#)

Pandemic Response Team

Prior to being presented to the School Board, The New Town Public School Health and Safety Pandemic Plan (Smart Restart) was created and reviewed by the Pandemic Response Team (PRT). The PRT consisting of 32 representatives from the following stakeholder populations:

- Teachers
- Head Custodians
- Community Members
- Medical Professionals
- UMDHU
- Parents
- Support Staff
- Two School Board Members
- Students
- Building Level Administrators
- MHA Nation
- District Level Administration

Team meetings were held via zoom, with zoom breakout rooms being used to encourage everyone’s participation. Email, online surveys and polls were also used to gather information. The superintendent chairs the team while the assistant superintendent, building level administration and business manager assist the superintendent with the development, monitoring and adjusting of educational services during a pandemic.



Pandemic Coordinators

In the New Town Public School District, the superintendent will serve as the district coordinator and will be available to NDDoH 24 hours a day, 7 days a week to respond to phone calls and emails from the NDDoH and local public health officials. Each building principal is the building level coordinator and will assist the superintendent by reporting confirmed pandemic cases found in the school setting to the superintendent.



The superintendent will communicate with NDDoH, the State Superintendent's office and school board president. If the superintendent is unavailable, principals will report to the assistant superintendent who will communicate with NDDoH, the State Superintendent's office and school board president.

Color Phases

The following phases will be used to define the community risk level associated with a pandemic. These phases align with the color-coded guidance in the ND Smart Restart Plan. Each level is reported to schools by the NDDoH after rigorous testing and assessment of cases in the community.

Please note that the state phase color is only one factor in the school board's decision regarding school district operational level.

Yellow

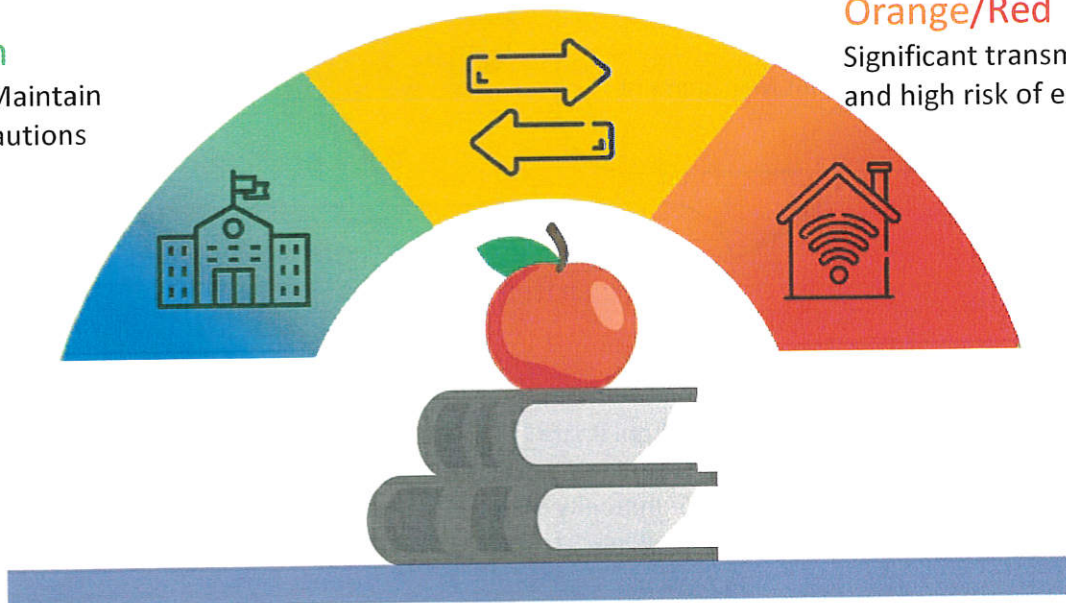
Heightened exposure risk.
Transmission is controlled.

Blue/Green

New normal. Maintain standard precautions

Orange/Red

Significant transmission and high risk of exposure.



Instructional Models

The instructional models used by the district will be guided, *in part*, by the risk level of the pandemic in the community as defined within the phases above. This guide of instructional models could be altered based on other factors, such as occupancy levels, age of children, abilities to move certain classes online, reservation family structure, cultural practices, etc.



Traditional Learning (No Pandemic)

All instruction is delivered in-person. Teachers and students maintain a normal daily schedule. Distance learning may be available in specific situations and requires administrative approval.



Blended or Hybrid Learning (Low-Medium Risk)

Multiple models of instructional delivery may be appropriate to meet the educational needs of students. On campus instruction may be possible using adaptations such as modified schedules, social distancing, use of protective gear and appropriate cleaning/disinfecting. A fully distance learning model will be available for families who prefer to keep student(s) at home during a pandemic.



Distance Learning (Medium-High Risk)

All instruction is provided off-campus through the use of distance learning resources or suited to the unique needs of the student. Microsoft Teams will be the platform used and will interface with programs such as Zoom, SeeSaw, Achieve3000, Mobymax and other online programs. Expectations of Parents/Guardians, Students, School District & Community leaders is provided in Appendix A. [New Town Public School District's Distance Learning Plan](#) is available on line.

Opening and Closing of Campus for Instruction

The decision of whether or not to provide on campus learning will be made by the New Town School Board based on data, color phase, consultation with health officials, tribal leaders, parent surveys, staff surveys, administrative input and other information presented by the superintendent. If the school board decides to move forward with on campus learning during a pandemic, health and safety protocols must be followed. A Summary of *operational levels* is included in Appendix B. The current school year's *operational status* and rationale is in Appendix C. *Note: Opening and closing of campus will not be directed by color phase alone.*

Individual Health and Safety Guidance

The district strives to provide a healthy and safe environment for all who occupy our schools. The following protocols are intended to provide a framework for the district's response to a pandemic. State and federal resources were reviewed in developing these protocols, although in some instances the district has chosen a more conservative approach.

Best Intentions

Despite taking every reasonable precaution, there is no guarantee our schools will be without risk as it relates to a pandemic. Germs exist everywhere and despite every attempt to clean and disinfect, the risk of infection is never zero. The district will work diligently to enforce social distancing, encourage use of masks, clean, disinfect and take other precautions which lower the risk of exposure, but cannot guarantee infections will not occur.

Protect Yourself and Others

Wash your hands often



- Wash with soap and water for at least 20 seconds especially after blowing your nose, coughing, sneezing or using the restroom.
- If soap and water are not available, use hand sanitizer that contains at least 60% alcohol.
- Avoid touching your eyes, nose, and mouth with unwashed hands.
- Students are encouraged to wash their hands often throughout the day.

Avoid close contact



- Keep social distance, at least six feet, from others especially important for people who are at a higher risk of getting sick.
- Alternate or modified schedules, adjustments to use of common areas, use of outdoor spaces and other actions that increase physical separation may be considered.
- The sharing of instructional materials should be limited as much as possible.
- Physical separation on busing, one student per seat, will be recommended but cannot be guaranteed.
- In yellow, orange or red phases, masks may be required.

Cover coughs and sneezes



- Always cover your mouth and nose with a tissue when you cough or sneeze or use the inside of your elbow.
- Throw tissues away and wash hands or use hand sanitizer to prevent spread.
- Masks will be strongly encouraged and may be required at times.

Cover your mouth and nose with a cloth face cover when around others.



- Educators need to teach students how to properly wear a face covering so they are prepared to use them on school buses or other situations in close proximity with others.
 - Resources from NDDPI and MPS will be provided to teachers.
- While a pandemic exists, masks will be strongly encouraged and may be required when social distancing is not possible. For example, when riding bus or working withing six feet of someone. In the red phase, masks may be required at all times.

Monitor your health daily



- Be alert for symptoms. Watch for a fever, cough, or shortness of breath.
- Parents are asked to screen their children each day before sending them to school. Use the screening checklist provided in appendix D.
- Staff and students who are sick may not come to school.
- Temperatures of symptomatic students or staff will be taken at the school.
 - Symptomatic students will be isolated, and their guardians contacted.

Health & Safety Protocols

Staff and Student Health

Monitoring the health of students and staff are an important component of a safe and healthy educational environment. New Town Public School District will take the following measures to ensure all students and staff are healthy while they are at school.

Use of Personal Protective Equipment (PPE)

Who	PPE Protocol
All Staff and Students	No PPE required
All staff (other than what is outlined)	Encouraged to wear cloth face coverings Required to wear face coverings on school transportation (bus) Required when working within six feet of anyone for five or more minutes. Depending on the Pandemic, gloves or other PPE may also be encouraged or required.
All Students	Encouraged to wear cloth face coverings. Required to wear face coverings when using school transportation (bus) Required when working within six feet of anyone for five or more minutes. Depending on the Pandemic, gloves or other PPE may also be encouraged or required.
Public facing staff (i.e. receptionists/clerical)	Required face shield, cloth face mask or physical barrier (i.e. plexiglass divider) Depending on the Pandemic, gloves or other PPE may also be encouraged or required.
Staff caring for / instructing a student in a small space – small group – for more than 5 minutes. (i.e. Nurse, SPED, EL, educator)	Building administrators in consultation with district nurse and educator will determine if face coverings or face shield are required . This may be influenced by instructional and learning needs of the student and health considerations of all occupants in the room. Depending on the Pandemic, gloves or other PPE may also be encouraged or required.
All staff	Required to wear a cloth face covering. Depending on the Pandemic, gloves or other PPE may also be encouraged or required.
All Students	Required to wear a face mask. Students will be provided breaks and allowed to remove their mask when outside or in spaces that can accommodate social distancing. Depending on the Pandemic, gloves or other PPE may also be encouraged or required.
All staff and students in school bus	Required to wear a face covering. Depending on the Pandemic, gloves or other PPE may also be encouraged or required.

Clean and disinfect



- School staff should clean and disinfect frequently touched surfaces daily.
- Shared materials (not recommended) should be cleaned after each use.
- All schools will be cleaned and disinfected nightly by custodial staff.

Isolation & Quarantine

- Definitions
 - Isolation – For people who are already sick from the virus. A prevention strategy used to separate people who are sick with the virus from healthy people.
 - Quarantine – For people who are not sick but have been exposed to the virus. A prevention strategy used to monitor people who were exposed for a period of time.
- New Town Public School District will follow isolation and quarantine guidelines and directives as set by NDDoH and UMDHU.
- Each school building will designate an isolation area to be staffed by a licensed school nurse, or if a nurse is not available, a staff member who has been trained in screening for pandemic symptoms.
- If it is determined that the person has symptoms consistent with the pandemic infection, they will remain isolated until they are able to exit the building.
- Immediate Family members (of the isolated person) who are in the building will be called to the isolation area for screening.

Before School Health Screenings

- Parents will be expected to screen each of their student(s) each morning before school. A screening checklist is provided in Appendix D.
- All employees are to self-screen prior to the start of each workday. Screening checklist is provided in Appendix D.
- Temperatures may be checked prior to students boarding a school bus, students with temperatures may be required to immediately return home.
- When temperature kiosks are active, everyone entering the building needs stop at the kiosk.
 - If temperature is indicated, the person is to report to the isolation area for further screening.

If a student or staff member becomes sick at school (or school event)

- Student
 - The child shall be provided a facial covering.
 - Direct/escort the child to the isolation area.
 - If appropriate, parent/guardian will be contacted to pick up their child.
 - If appropriate, if there are any immediate family members in the building, they will be called to the isolation area for screening.
- Staff
 - Inform your supervisor immediately and wear a face mask / shield until they can be replaced if supervising students at that time.
 - Report to isolation area.
 - If appropriate, leave the school building/grounds and consult with a health care professional.
 - Report results to building principal as soon as possible.
 - If appropriate, if there are any immediate family members in the building, they will be called to the isolation area for screening.

COVID-19 EXCLUSION GUIDANCE Decision Tree for Symptomatic Individuals in Schools

Send home or deny entry if **ANY** of the following symptoms are present:

Fever (100.4°F or higher) **OR** two or more of the following symptoms: fatigue, headache, muscle/body aches, chills, cough, shortness of breath, sore throat, congestion/runny nose, nausea, vomiting, diarrhea, abdominal pain **OR** loss of taste and/or smell. This is in addition to general infectious disease exclusion guidance. People who are ill should contact their health care provider for additional guidance.

Has the person been clinically evaluated?

Tested Positive for COVID-19 ^{*c}

Stay home at least 10 calendar days from onset of symptoms **and** for 24 hours with no fever **and** improvement of symptoms – **whichever is longer**.

Has the person been clinically evaluated?

Clinically diagnosed (not tested) for COVID-19 ^{*c}

Stay home at least 10 calendar days from onset of symptoms **and** for 24 hours with no fever **and** improvement of symptoms – **whichever is longer**.

Has the person been clinically evaluated?

Alternate clinical diagnosis or laboratory confirmed condition (e.g., norovirus, hand/foot/mouth) ^d

Follow provider directions/ recommended treatment & return guidance

Follow the Child Care and School Infectious Disease Guidance.

For a person NOT clinically evaluated who is monitoring symptoms at home

Fever (100.4°F or higher) OR two or more of the following symptoms: fatigue, headache, muscle/body aches, chills, cough, shortness of breath, sore throat, congestion/runny nose, nausea, vomiting, diarrhea, abdominal pain OR loss of taste/smell. ^c

Stay home at least 10 calendar days from onset **and** for 24 hours with no fever **and** improvement of symptoms – **whichever is longer**.

For a person NOT clinically evaluated who is monitoring symptoms at home

Other symptoms not consistent with COVID-19 ^d

Follow the Child Care and School Infectious Disease Guidance.

** Siblings & household members also stay home for 14 days from last exposure to a COVID-19 case while contagious*
^c (Red Box) = COVID-19
^d (Yellow box) = Other symptoms

Adapted from the Minnesota Department of Health
07/20/2020

www.health.nd.gov/diseases-conditions/coronavirus

Return to School

- When a student or staff member has been isolated or quarantined as directed by NDDoH or UMDHU they will be allowed to return to school after being cleared by the NDDoH or qualified medical professional.

Facility Accommodations & Protocols

Additional Facility Space

- The New Town Public School District is in process of securing additional temporary building space to allow for appropriate social distancing.
 - If space is secured and the school board approves on campus learning, all students will be invited back to the school. Distance learning will remain available for families who opt to keep their children off campus.
 - If additional space is not secured, a modified schedule will be developed to limit the number of students on a daily basis.

Modified Layouts

- Desks will be placed six feet apart when feasible.
- Desks will be facing the same direction when feasible.
- Lounge furniture (couches, benches, etc.) in communal areas and library will be moved to temporary storage.

Physical Barriers/Reminders

- Plexiglass barriers will be installed at work stations (i.e. receptionist, admin assistant desks).
- When two doors are available to a room make one an entrance and one an exit.
- Visual handwashing reminders in all bathrooms.
- Visual social distancing reminders where appropriate.
- Use social distancing ropes/noodles where age appropriate.



Communal Spaces

- Limit use of gymnasiums, cafeterias, and other gathering spaces.
- Remove furniture or tables which encourage socializing.
- Allow additional time for bathroom breaks to encourage thorough hand washing.
- Consider plexiglass barriers in bathrooms and sinks where social distance is not possible.
- Encourage individual water bottles.
 - Shut off or tape off water fountains.
 - Bottle filling stations are acceptable.

Food Service

Adequate nutrition is important for learning. New Town Public Schools is committed to providing nutritious meals in a safe manner during a pandemic.

On Campus Safety

- Appropriate cleaning and disinfecting of food preparation areas will occur.
- During yellow, orange, or red phases, meals will be served in classrooms.
- No communal stations are allowed (i.e. salad bars).
- Food prep workers will self-screen for pandemic symptoms daily.

Meal Delivery

- During yellow, orange, and red phases, meal delivery will be provided to students participating in distance learning.
- When students are allowed on campus, during yellow, orange or red phases, on campus meals will be served in classrooms.

Transportation

We value providing safe and reliable transportation for our students. During a pandemic, families need to be aware that social distancing on buses may not occur. Parents/guardians need to consider this when deciding whether to use school transportation during a pandemic.

At Home

- Families can assist the district by providing transportation for their children.
- Parents/Guardians are to screen each of their children prior to allowing them to board the bus. Children with pandemic symptoms should be kept home.

At Bus Stops

- Students are to maintain social distancing at bus stops.
- Consider taking students' temperatures prior to boarding.
- Parents/guardians are to have a safety plan for their child(ren) to return home in the event child is denied access to the bus due to pandemic symptoms.

On the Bus

- Face masks will be required when in yellow, orange, or red phases.
- Hand sanitizer will be available on bus.
- When possible/appropriate, keep windows partially open.
- Students are to sit one student per seat as much as possible.
 - If this is not possible then family members should sit two to a seat.
 - Only after the family members have doubled up should children from different families be allowed to sit together in the same seat.
- Buses will be sanitized after each route.

Closing

Thank you so much for taking the time to review our Health and Safety Pandemic Plan, we hope your questions have been answered. However, we understand that a pandemic situation is complex, and you may have additional questions, suggestions or concerns. Hearing this information will help us better serve our students and all stakeholders. Please contact your building principal or the superintendent's office and share your thoughts regarding our handling of educational services during this pandemic.

New Town Public School District Phone Numbers

Edwin Loe Elementary

- 701-627-3718

New Town Middle School

- 701-627-3660

New Town High School

- 701-627-3658

New Town Public School District Office

- 701-627-3650

Appendix A

Parent/Student/Teacher/District & Community Expectations

Note: Expectations have been significantly increased from the spring of 2020.

Parent Expectations

1. Provide internet access.
2. Provide quiet space for student(s) to work.
3. Set clear expectations for student(s) for attendance, effort, and honesty.
4. Ensure student is attending online sessions.
 - a. Students will be required to be on-line, in real-time with their classmates several times between 8:30-3:45. (Example: A HS student may be required to attend each class for the first part of the class period, 20 minutes is being considered. Elementary will attend the morning and afternoon sessions.)
 - b. If a student is going to be absent, the school office must be contacted. Students not accounted for will be marked as unexcused.
5. School/Tribal/County interventions will occur if students are not attending.
 - a. Specifics being worked on
6. School/Tribal/County interventions will occur if students are not completing assignments.
 - a. Specifics being worked on
7. Regular weekly communication with home/classroom teachers.
8. View/Attend any parent/guardian on-line training videos to learn how to help your student(s) be successful.
9. Monitor student(s) for unethical academic conduct (cheating) on standardized assessments, tests, quizzes, and plagiarizing information from the others.
10. Checking work that student completes.

Student Expectations

1. Students login and attend at assigned times.
2. Secondary classes will be meeting on a regular schedule with expectations that students attend and engage in real-time, on-line learning sessions several times between 8:30-3:34 each day.
3. Attendance will be taken.
 - a. School/Tribal/County services will become involved if student does not attend at assigned times.
 - b. If unable to attend, remind parent/guardian to call the school office with reason for absence.
4. Students will be expected to complete regular assessments such as NWEA, STARS, Achieve 3000, etc.
5. Give 100% effort to your studies.
 - a. No cheating, including copy/paste from web without citing sources.

- b. Intervention teachers may be available for additional tutoring sessions during the school day. Teachers should be contacted only via email between 4:00 pm and 8:00 am; please refrain from phone calls during this time.

Teacher Expectations

1. Expectations and learning outcomes will be consistent with on-campus learning and grading.
2. Teachers will be in school online Mon-Friday for real-time instruction using (also considering other options)
 - a. Microsoft Teams
 - b. Apps will be interfaced with Microsoft teams and will include but not be limited to:
 - i. SeeSaw
 - ii. Zoom
 - iii. Acellus
 - iv. Achieve 3000
3. Attendance will be taken and reported to the office.
4. Sessions will be recorded and posted for students who are absent can view them later.
5. Use intervention services from the school, tribe, or county when appropriate.
6. Provide regular avenues for parent communication regarding student progress.

District & Community Expectations

1. Provide avenue for tutoring.
2. Provide avenue for feedback on how distance learning can be improved.
3. Provide technical assistance when appropriate (i.e. internet connection, devices, etc.)
4. Provide intervention assistances including, but not limited to:
 - a. Mental Health services
 - b. Choice ready services
 - c. Interventions services
 - i. Tribal or Mountrail Social Services
 - ii. Court services for educational neglect (truancy)
5. Provide specific contact information for the parent/guardians of students who are not successful in distance learning.
 - a. Example: I have tried everything I can think of to keep my child focused. I need help, what do I do? Who do parents/guardians contact, what are the emails of these individuals?



Preparing students to think reason and thrive in a diverse society.

Appendix B

Summary of Operational Levels During a Pandemic

Decision made by School Board

(Note: State/County color phases are only *one* factor in the school board's decision regarding operations.)

Level I - Traditional Learning – No Pandemic	
Priorities:	<ul style="list-style-type: none"> • Education of students • Mental Health of students • Maintenance of excellent cleaning and disinfecting practices
Districtwide Practices:	<ul style="list-style-type: none"> • Regular meeting schedules • 3-5 year plan followed and updated • Promote excellent customer service • Cleaning and disinfecting of buildings
Schools:	<ul style="list-style-type: none"> • Regular meeting schedules • 21st Century Education Practices • Collect and analyze data on distance learning; determine how to improve
Classrooms:	<ul style="list-style-type: none"> • Students trained on how to access online learning resources including learning management system adopted by school. • Collaborative seating resumed • 21st Century Education Practices
Common Areas:	<ul style="list-style-type: none"> • Collaborative seating reinstated • Cafeteria, gymnasium, and other common areas operating at capacity
Extracurricular & Activities:	<ul style="list-style-type: none"> • Guidance and directives from the NDHSAA and other governing boards will be used to guide these activities.
Communications:	<ul style="list-style-type: none"> • Maintain excellent communication with all stakeholders.

Level II - Blended/Hybrid Learning – Low/Medium Risk

Priorities:	<ul style="list-style-type: none"> • Ensure students and staff who are symptomatic stay at home. • Maximize social distancing cohort where possible. • Support Distance Learning model.
Districtwide Practices:	<ul style="list-style-type: none"> • Based on identified pandemic cases of students and staff, targeted closures may be implemented (class, grade, department, etc). While other schools remain open and meeting students in person. • Social distancing where possible and reasonable. <ul style="list-style-type: none"> ○ Distancing on a school bus will be unachievable, we encourage parents to consider alternate transportation for their child. Masks will be required. • Buildings routinely cleaned and disinfected according to CDC guidelines. Special focus on high touch/traffic areas. • Handwashing integrated throughout the day. • Hand sanitizer available throughout each building. • Support and train parents on use of technology tools and online curricular resources. • Implement technology support line. • All visitors must wear masks. • Satellite site for elementary active. • No more than 14 students per classroom. • Meal delivery active.
Schools:	<ul style="list-style-type: none"> • Protective measures will be maintained in office spaces. • Some school events, assemblies and gatherings may be changed or cancelled. • Access to campus will be limited, with new protocols. • Temperature kiosks will be active. • All visitors must wear masks. • Teachers may be required to rotate classes. • No more than 14 students per classroom.
Classrooms:	<ul style="list-style-type: none"> • Students may be attending school on a hybrid schedule. • Students will be expected to engage in learning opportunities online using district LMS system on days they are not in school. • Teachers are expected to make direct student/family contact at least: <ul style="list-style-type: none"> ○ 1 time per week by homeroom or classroom teacher • Limited use of shared materials and supplies when students are in school. • Desks arranged to allow for cohort groups and social distancing where possible and reasonable. • Staff and students working in close proximity will be advised to wear a face covering. • No more than 14 students per classroom
Common Areas:	<ul style="list-style-type: none"> • Schedules may be altered to reduce cohorts passing in common areas. • Teachers may be asked to rotate rooms. • Lunch times and location may be altered to reduce the numbers in the cafeteria.
Extracurricular& Activities:	<ul style="list-style-type: none"> • Guidance/directives from NDHSAA and school board will be used to guide these activities.
Communications:	<ul style="list-style-type: none"> • Share information about how to stop the spread the pandemic. • Share technology support resources for parents. • Activate PRT and community leader pandemic consultations.

Level III - Closed Campus Learning – Medium-High Risk

Priorities:	<ul style="list-style-type: none"> • Reduce the risk of community spread by closing schools.
-------------	-------------------------------------------------------------------------------------------------------------

	<ul style="list-style-type: none"> • Support Distance Learning model. • Closely monitor ability to reopen campus.
Districtwide Practices:	<ul style="list-style-type: none"> • Online instruction will be used district wide in all courses at all grade levels. • Instruction will focus on essential learning targets. • Attendance and academic progress will be expected. • Open campus grading policies remain in place. • Implement internet access (wifi) hot spots around schools, to support distance learning for those that may not have it in their homes. • Meal delivery active. • All visitors must wear masks.
Schools:	<ul style="list-style-type: none"> • Closed to the general public except by special arrangement with the district office. • Small group meetings or instruction may be allowed, particularly for special needs students or academic interventions. • All visitors must wear masks.
Classrooms:	<ul style="list-style-type: none"> • Students will engage in learning at the home. • Students will be expected to engage in learning opportunities online (whatever your LMS system). • Teachers are expected to make direct student/family contact at least once a week.
Extracurricular& Activities:	<ul style="list-style-type: none"> • Athletics and other extracurricular activities likely suspended. (School Board decision)
Communications:	<ul style="list-style-type: none"> • Clear communication about academic expectations and grading shared with students and families. • Share technology support resources for parents.

Appendix C

Operational Status & Rationale 2020-21



New Town Schools Smart Restart

Board Approved 7/28/20

Primary Goal: To bring students/staff back into the buildings in a safe and organized way, basing decisions on local pandemic data, MHA/Public Health consultations and parent/staff surveys.

Recommendation: August 19 – September 21: All students distance learning/no athletics or activities

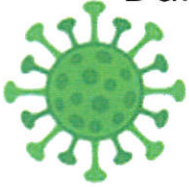
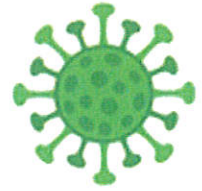
Rationale

- Tribal Consultation – strong recommendation to distance learn only
- Local Health experts – strong recommendation to distance learn only
- UMDHU – general information
- Parent Surveys – strong majority (65%) indicate preference for distance learning only
- Staff Surveys – Split (46% face to face, 53% online only, 24% “other”)
- Data – Cases increasing in Mountrail county and state-wide (almost moderate level)
 - From ND Dept. Health regarding state-wide cases
 - 7/25 – 986 active cases
 - 7/26 – 1024 active cases
 - 7/27 – 1084 active cases

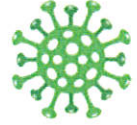
Broad Overview

- Changes in before school workshops
 - Allow for more planning time
 - Allow for targeted training
 - All teachers will be in the building throughout the distance learning time
- On-line training and practice for students/parents/guardians prior to August 19
- Distance learning starts August 19
- Clear expectations will be developed and communicated to all stakeholders
- Meal service will be in place
- No early outs until we resume on-campus learning
- Homework delivery and pickups will still occur, but all students are expected to attend real-time, on-line learning sessions as well.
- Determine satellite location for elementary students
- Finalize hybrid plan
- Paraprofessionals involved in book studies
- Monitor cases in state and county
- Consult with MHA and health professionals
- Review of plan at September 8th regular board meeting
 - Is it safe to start bringing in students with highest on-line needs September 14?
 - Is it safe to go to hybrid model on September 21?
 - Is it safe to resume athletics and activities on September 21?

Appendix D



Daily Before School Health Screening Checklists Student Daily at Home Screening



Parents are asked to review this daily health checklist by answering these questions before sending their child to school.

(Parents do not need to send the questionnaire to school)

Edwin Loe Elementary-701-627-3718
New Town Middle School- 701-627-3660
New Town High School-701-627-3658

New Town Public School District Office-701-627-3650

Has your child had *close contact* (within 6 ft for 15 minutes or longer) with someone who has a confirmed case of COVID-19 in the past 10 days?

Yes ___ No ___

Does your child have a *new or worsening* shortness of breath?

Yes ___ No ___

Does your child have *new or worsening* cough?

Yes ___ No ___

Does your child have a fever of 100.4 or greater?

Yes ___ No ___

Does your child have chills?

Yes ___ No ___

Does your child have a *new or worsening* sore throat?

Yes ___ No ___

Does your child have a new loss of taste or smell?

Yes ___ No ___

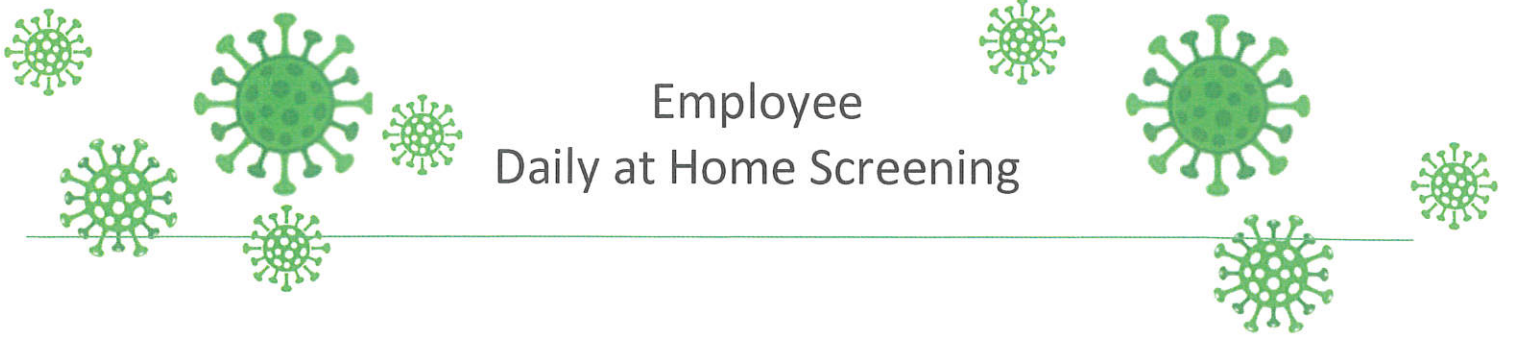
If you are able to answer **NO** to **ALL** questions, go to school.



If **YES** to **ANY** of the questions **STOP!**

Do not send your child to school. Contact your healthcare provider and your child's school.





Employee Daily at Home Screening

Have you had *close contact* (within 6 ft for 15 minutes or longer) with someone who has a confirmed case of COVID-19 in the past 10 days?

Yes ___ No ___

Do you have a *new or worsening* shortness of breath?

Yes ___ No ___

Do you have *new or worsening* cough?

Yes ___ No ___

Do you have a fever of 100.4°F or greater?

Yes ___ No ___

Do you have chills?

Yes ___ No ___

Do you have a *new or worsening* sore throat?

Yes ___ No ___

Do you have a new loss of taste or smell?

Yes ___ No ___



If **YES** to **ANY** of the questions **STOP!**

Arrange for a substitute and contact building principal.



If you are able to answer **NO** to **ALL** questions, report for work.

