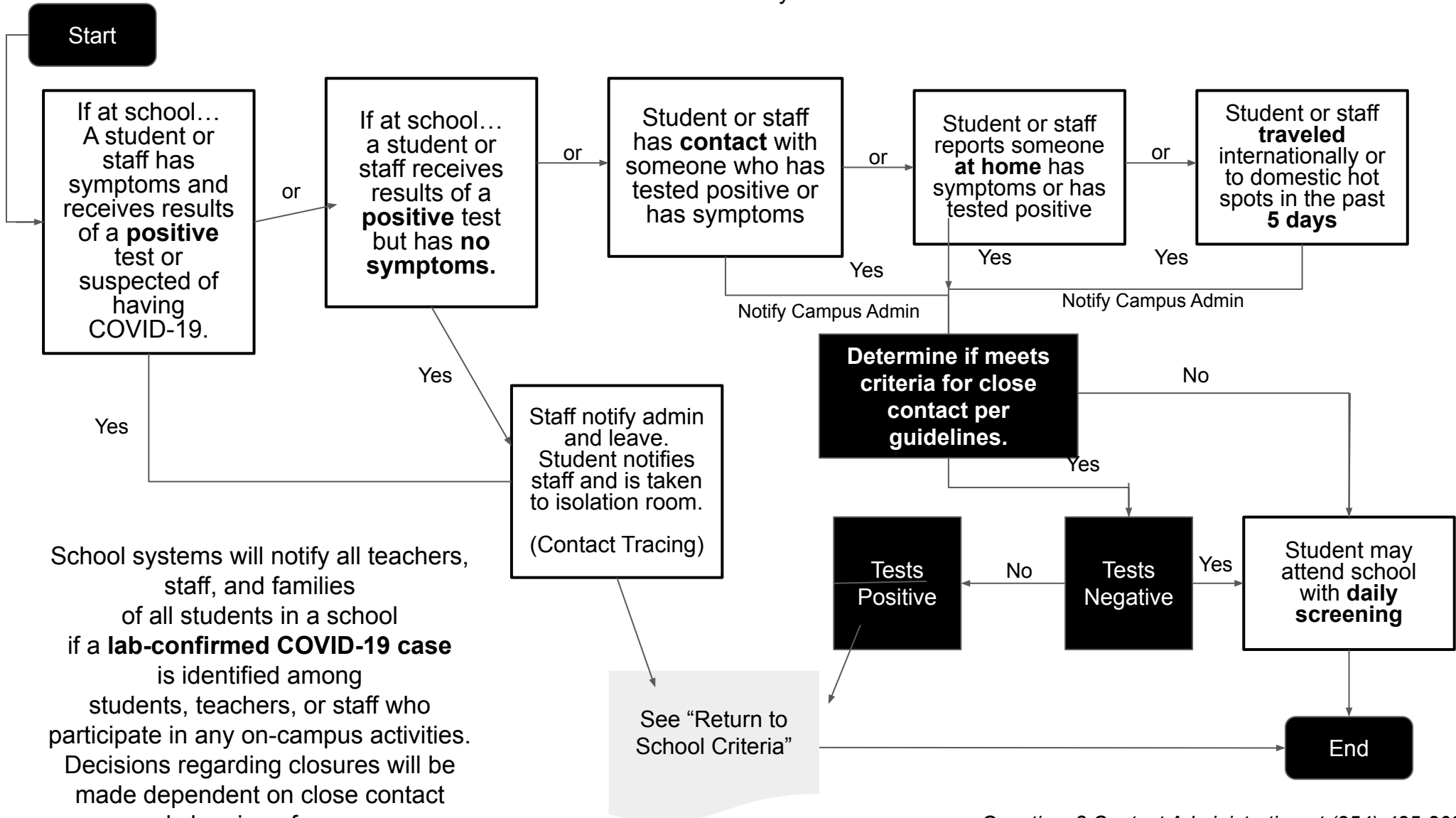


Meridian ISD Flowchart for COVID-19

To be considered exposed to COVID-19, you need to have **close contact** with a person who has the virus within the last 14 days or while the individual was infectious. Close contact includes: being directly exposed to infectious secretions (e.g., being coughed on); or being within 6 feet for a cumulative duration of 15 minutes. Factors such as masks and dividers may affect the determination of **close contact**.



School systems will notify all teachers, staff, and families of all students in a school if a **lab-confirmed COVID-19 case** is identified among students, teachers, or staff who participate in any on-campus activities. Decisions regarding closures will be made dependent on close contact and cleaning of spaces.

Return to Work/School Criteria

- At least 3 days (72 hours) have passed since recovery (no fever without the use of fever-reducing medications)
- You have improved in respiratory symptoms (cough, shortness of breath, etc.)
- At least 10 days have passed since symptoms first occurred

Symptoms of COVID 19

People with these symptoms may have COVID 19

- o Have a temperature above 100.4
- o Loss of taste or smell
- o Shortness of breath
- o Headache
- o Chills
- o Diarrhea
- o Shaking or exaggerated shivering
- o Cough
- o Difficulty breathing
- o Fatigue
- o Congestion or runny nose
- o Sore throat
- o Nausea or vomiting
- o Significant muscle pain or ache

Important Information

- Schools must notify the local health authority in the case of a confirmed case
- Determine last date staff/student was physically present at school, pursue who was in “close contact” by definition.
- Determine areas that may have been exposed in last 72 hours, follow disinfecting protocols in those areas
- Determine additional closure response if needed
- School systems will notify all teachers, staff, and families of all students in a school if a **lab-confirmed COVID-19 case** is identified among students, teachers, or staff who participate in any on-campus activities