

The logo for MVR-III is displayed in a stylized, italicized font. The letters 'M', 'V', and 'R' are large and bold, while the '-III' is smaller and follows the same italicized style. The entire logo is white and set against a solid purple rectangular background.

Return to School Plan

*Plan may be modified as public health guidelines are updated.

Published :
July 24, 2020

School Year
2020-2021

FROM THE SUPERINTENDENT

Brief Introduction

Each week beginning March 16, 2020, our district leadership team has developed best case processes for our school and community. Schools in our community were impacted in an unprecedented way by the emergence of the novel coronavirus (SARS-CoV-2), the causative agent of COVID-19. As we have moved through this pandemic, we have learned that children are less vulnerable to infection and are unlikely to become seriously ill with COVID-19. The profound negative impact of loss of in-person schooling on the well-being of children has been well documented and thus we are preparing for the return to school for the 2020-2021 school year. However, we must be attentive that this public health crisis has not ended. Adults, particularly those who are older and those with underlying health conditions, are at increased risk of serious illness from COVID-19. Our schools need to be prepared to reduce the chance that anyone will acquire this infection during the school day and armed with a protocol to respond to a case of infection. Schools must be poised to adapt to new emerging information in order to create a safe and robust educational experience. Although planning for this "new normal" may create some inconveniences, if we work together as a community, we will help ensure that our students, staff, and faculty will stay healthy and will reduce the chance of significant educational disruptions.

PLEASE NOTE: As health experts learn more about COVID-19, this document may continue to evolve to better inform school operations in Missouri and provide guidance on further protocols to prevent the spread of this virus. It is also important to note that the school board and local jurisdictions have the authority to implement more or less restrictive preventative measures as the need arises.

Stay healthy & well,
Dr. John Mulford
Superintendent





Welcome to a year of **CHOICE!**

AS PARENTS AND GUARDIANS, YOU HAVE THE
ABILITY TO CHOOSE THE RIGHT LEARNING OPTION
FOR YOUR CHILD(REN).

1

**OPTION-
TRADITIONAL SEATED CLASSES**

2

**OPTION-
ONLINE LEARNING FULL-TIME**

3

**OPTION-
HYBRID LEARNING (partial online
& in-person)**



LEARNING OPTIONS

The Meramec Valley R-III School District is committed to providing flexible learning opportunities for students during times when students are unable to access the traditional classroom. Please review the options to determine what may be the best learning environment for your student during the 2020-21 school year. **The sign up window for Online Learning was the week of Monday, July 27, 2020.**

OPTION 1: IN PERSON LEARNING



TRADITIONAL SEATED CLASSES, (PreK-12th)

- **Students will have assigned seating in all classes, with a minimum of 3 feet when possible.**
- **All staff are expected to wear face coverings within a 6-foot distance of students. Face coverings provided to all employees.**
- **Hand sanitizer will be provided in classrooms and on buses.**
- **All visitors are required to wear a face-covering.**
- **Lunch and recess will occur with assigned cohorts for PreK-4th.**
- **A water bottle is recommended for every student. Filling stations are available in all schools.**
- **Additional measures will be implemented to ensure proper cleaning and disinfecting of high touch areas, with comprehensive disinfecting nightly.**
- **A face-covering will be provided to all students in grades 5th-12th (gaiter style covering).**
- **Face shields will be provided to students in grades PreK-4th for small group activities.**
- **No large assemblies will be held at this time.**
- **As COVID situations evolve, the District may be required to suspend in person learning.**

OPTION 2: 100% ONLINE LEARNING



Grades 7th-12th

- **A district device will be provided (Chromebooks are issued to all students at these grade levels).**
- **Students must have reliable Internet access.**
- **Students will receive all instruction off-site via distance learning. All curriculum will be delivered by MVR-III teachers.**
- **Students will use Zoom to participate in all classes during regular class periods. Students are expected to attend and participate in class at the designated time just as if they were there in person. Failure to join remotely will result in being counted absent.**
- **Students will maintain the same pacing, assignment, and grading expectations as students attending in person.**
- **This option requires students to be online multiple times during the school day.**
- **Course availability for some electives may be limited.**
- **Middle and High School students electing Online Learning are allowed to participate in activities and sports if they meet the eligibility standards outlined in the MVR-III Activities Handbook.**
- **Families must commit to Online Learning for the entire semester.**
- **If an Online Learning option is selected, the building administrator will contact you to discuss further details and planning for your family.**

OPTION 2: 100% Online Learning

Grades K - 6



- A district device is not provided (the district will work with families experiencing a hardship that are in need of a student device).
- Students will receive all instruction off-site through an Online Learning platform.
- Students will be required to maintain minimum weekly progress expectations for each grade.
- This option requires parent or guardian support for approximately 5 hours per day. Oversight at home is critical to student success.
- An MVR-III certified teacher will monitor all student progress and support families.
- Each student needs reliable Internet access, a dedicated device, and a consistent learning space.
- Families must commit to Online Learning for the entire semester.
- If an Online Learning option is selected, the building administrator will contact you to discuss further details and planning for your family.

SEE THE DISTRICT WEBSITE FOR THE FULL RE-ENTRY PLAN.



OPTION 3: Hybrid Learning Option (partial online & in-person)

Grades K-12

All Online Learning guidelines (Option 2) would apply AND...

- **Students will attend in-person for classes not offered virtually. Examples may include:**
 - **Grades K-6: Odyssey and 6th Grade Band**
 - **Grades 7-12: Art, Band, Choir, Engineering, Odyssey, etc.**
- **Students will attend in-person for special services.**
- **Parents are responsible for student transportation outside of regularly scheduled bus route times.**
- **Student must have reliable Internet access and a consistent learning space.**
- **Families must commit to the Hybrid Learning option for the entire semester.**
- **If the Hybrid Learning option is selected, the building administrator will contact you to discuss further details and planning for your family.**
- **As COVID situations evolve, the District may be required to suspend in person learning.**



SHORT TERM DISTANCE LEARNING: K-12

In the event of any short-term closure or student absence, the following plan for instruction will be followed for the 2020-21 school year:

- **Students will access course materials and classroom instruction through Google Classroom or Canvas.**
- **Students will maintain the pacing, assignment, and grading expectations of traditional classroom learning.**
- **Staff will email, call, and/or Zoom 2-3 times per week to give feedback to students and check on completion and comprehension of skills. For an individual short-term absence, the teacher will work with the family to establish a preferred method of communication.**
- **Students without access to the Internet will be provided paper packets of all assignments and reading materials.**
- **Parents and students will also be directed to district-wide Alternative Methods of Instruction (AMI) pages for grade level or course specific information and resources.**

SEE THE DISTRICT WEBSITE FOR THE FULL RE-ENTRY PLAN.

Color-Coded Status Levels



Contingency plans to respond to changes in the level of transmission

MVR-III believes it is prudent to develop contingency plans to respond to the level of transmission in the community. In addition, we want to be able to quickly and clearly notify parents of any changes in protocol. The status levels will be determined collaboratively with the Franklin County Health Department (FCHD). The following section identifies the four (4) status levels and highlights protocols for each level. See the full district re-entry plan for the rationale and detailed description of the changes in protocol. Each status level is color-coded for ease of use (Green, Yellow, Orange, and Red).

GREEN STATUS

Community spread of COVID-19 is low or non-existent.

- All staff will be required to wear face-coverings within 6 feet of others.
- Students in grades 5-12 are encouraged to wear face-coverings.

YELLOW STATUS

The community spread of COVID-19 is heightened.

- All staff and students in grades 5-12 will be required to wear face-coverings.
- Extra and co-curricular practices will continue with face-coverings required.
- All guidelines from the previous status will apply.

ORANGE STATUS

The community spread of COVID-19 is significant.

- Limit the movement of students throughout the building.
- Breakfast and lunch will be served in the classroom.
- K-6 recesses will be limited to one class at a time per playground area.
- Extra and co-curricular activities will be limited with face-coverings required.
- All guidelines from the previous status will apply.

RED STATUS

The community spread of COVID-19 is severe.

- A classroom, a school, or the district may be closed.
- The Short Term Distance Learning plan will be implemented.
- Extra and co-curricular will be canceled.

SEE THE DISTRICT WEBSITE FOR THE FULL RE-ENTRY PLAN.



EARLY CHILDHOOD

Supporting our youngest learners

- **Safety protocols similar to K-12 will be implemented, but adapted for the early childhood environment. See Option 1 for more details.**
- **Social distancing guidelines will be enacted to the extent possible.**
- **Face-coverings are not required for early childhood students.**
- **Staff will wear face-coverings when social distancing is not possible.**



SEE THE DISTRICT WEBSITE FOR THE FULL RE-ENTRY PLAN.



FOOD SERVICE

Providing nutritious meals for all students

ELEMENTARY

- Students will sit with an assigned cohort group.
- Grab-and Go options will be available.
- Spacing between cohort seats will be established.
- Students will enter, sit and exit by cohort.
- No external food deliveries or lunch visitors for students will be allowed.
- Hand washing and/or sanitizer will be used prior to meals.
- More lunch periods will be established to reduce congestion.

SECONDARY

- Students will sit with an assigned cohort group.
- No external food deliveries or lunch visitors for students.
- Hand washing and/or sanitizer will be used prior to meals.
- Grab-and Go options will be available.
- Explore opening other locations for lunch seating (commons, gym, etc.).
- More lunch periods will be established to reduce congestion.





TRANSPORTATION

Providing students safe bussing to and from school

ELEMENTARY & SECONDARY

- Parents are encouraged to transport their child(ren) to and from school.
- Assigned seats will be used to reduce transmission and assist with contact tracing if necessary.
- Siblings will be required to sit together when appropriate.
- Face-coverings may be required for grades 5-12.
- Hand sanitizer will be provided on each bus.
- A distance of 6 feet will be encouraged while waiting at bus stops, when loading, and at the end of day.
- Buses will be sanitized after morning and afternoon routes.



SEE THE DISTRICT WEBSITE FOR THE FULL RE-ENTRY PLAN.

MENTAL & EMOTIONAL HEALTH



Providing support for students during a public health emergency

- **The District will emphasize social emotional learning as students transition back to school.**
- **School Based Counselors and support staff will be available to students as needed.**
- **MVR-III will collaborate with mental health groups; Compass Health, Preferred Family Healthcare, etc.**



SEE THE DISTRICT WEBSITE FOR THE FULL RE-ENTRY PLAN.

HEALTH SERVICE GUIDELINES



Doing our part to minimize the spread of COVID-19

- **Staff and students will complete a self-screener for symptoms every day before coming to work or school.**
- **If symptomatic, stay home.**
- **If symptoms occur during the school day, a nurse will complete a screening. Staff members will be sent home and students will be isolated until they can be picked up. Parents are encouraged to list two or more emergency contacts.**

SYMPTOMS OF COVID-19

Fever or chills
Cough
Shortness of breath/difficulty breathing
Muscle or body aches
Headache
New loss of taste or smell
Sore throat
Congestion or runny nose
Nausea or vomiting
Diarrhea



SEE THE DISTRICT WEBSITE FOR THE FULL RE-ENTRY PLAN.

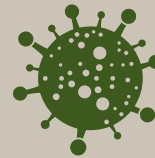


SYMPTOMATIC STUDENTS & STAFF

Balancing right-to-know with privacy and legal considerations

IF A STUDENT OR EMPLOYEE GETS COVID-19:

- **The school will notify families and/or employee of potential exposure as determined by the Health Department.**
- **The Health Department will perform contact tracing and provide instruction to individuals who may have had extended close contact with the COVID-positive student.**
- **The COVID-positive student and/or employee will be able to return to school as determined by the Health Department and/or medical professional.**



SEE THE DISTRICT WEBSITE FOR THE FULL RE-ENTRY PLAN.

COMMUNICATION



Providing regular, timely, and accurate information

- Your student's teacher and school building will communicate with parents regularly.
- Families are encouraged to follow the District website for updates; www.mvr3.k12.mo.us.
- Follow the District on Facebook and Twitter.
- Download the District's free mobile app (search "MVR-III School District" in the App Store and Google Play).
- Make sure your contact information is up to date in our School Information System (SIS-Parent Portal).



SEE THE DISTRICT WEBSITE FOR THE FULL RE-ENTRY PLAN.



ATHLETICS & ACTIVITIES

Minimizing spread among players, coaches, and students

- Athletes must pass a daily wellness check.
- Athletes will practice social distancing.
- Athletes will receive a District provided face-covering.
- No spectators permitted to attend practices.
- Regular hand sanitizing and equipment wipe-down will occur.
- Athletes should stay home when ill.



SEE THE DISTRICT WEBSITE FOR THE FULL RE-ENTRY PLAN.

LEARN MORE AT

www.mvr3.k12.mo.us

ONLINE LEARNING SIGN UP

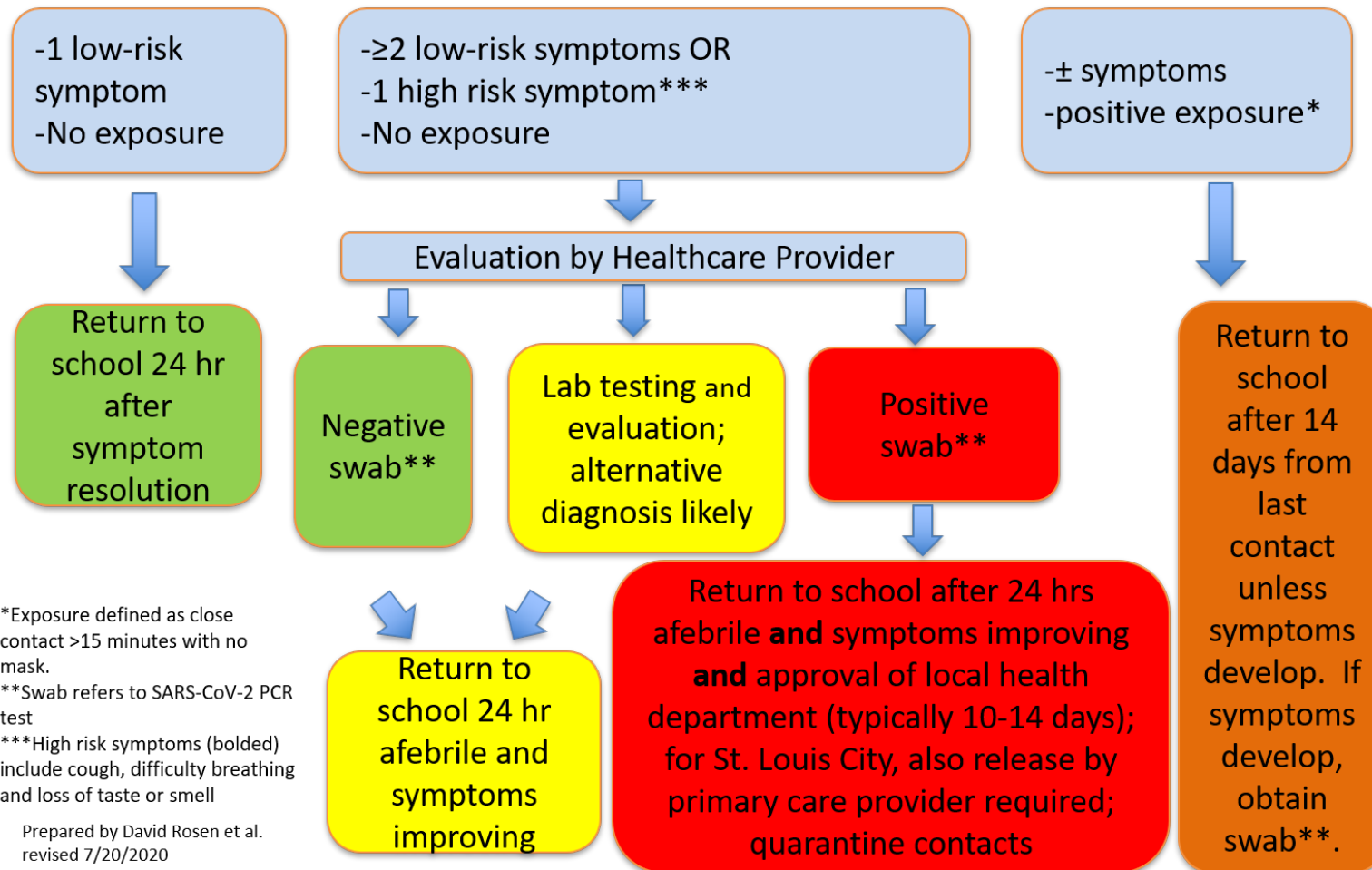
We are asking ALL families to select which Student Learning Option they are choosing for their student(s) for the 2020-21 school year. An email will be sent to all families on Monday, July 27th, with a link to select your preferred learning option for the 2020-2021 school year.

If an Online or Hybrid Learning Option is selected, it will require a minimum commitment of participating for the entire fall 2020 semester (August 24-December 22, 2020). Likewise, if a family selects a Hybrid Learning Option, parents will be responsible for student transportation outside of regularly scheduled bus route times. If the Online or Hybrid Learning Option is selected, a building administrator will call to discuss further learning details and planning.



School Nurse Algorithm: Screen all students for potential COVID-19 symptoms or exposure:

Any new **cough, difficulty breathing, loss of taste/smell**, fever ($\geq 100.4^{\circ}\text{F}$), congestion/runny nose, nausea/vomiting/diarrhea, sore throat, headache, myalgia, or exposure* to COVID-19 positive person?



MVR-III SCHOOL DISTRICT COVID-19 EXPOSURE PROTOCOL

Q
U
A
R
A
N
T
I
N
E

ACTIVE CASE

Employee/student is diagnosed with COVID-19 or is considered a presumptive positive.



QUARANTINE

Follow recommendations of health professionals. Employee/Student can only return to the school district after being cleared by the Franklin or St. Louis County Health Department.

NOTIFY your direct supervisor/school nurse. They will inform the District Response Team.

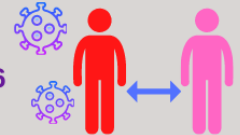
IDENTIFY members who have been within 6 feet with the employee/student presumptive positive for more than 15 minutes.

CLEANING

Temporarily close the area to deep clean the space where the employee/student worked.

CLOSE CONTACT

Employee/student has symptoms or has been within 6 feet of the employee/student presumptive positive for more than 15 minutes.



QUARANTINE

Person should quarantine for a minimum of 14 days from the last date of exposure and monitor their own symptoms. Report if they have symptoms or if their contact tests positive for COVID -19. Person may return to work/school after being cleared by the Franklin or St. Louis County Health Department.

NOTIFY the following individuals:

- Direct supervisor for employees
- School office for students

IDENTIFY anyone who has been in DIRECT contact with the ACTIVE CASE employee/student. Direct contact means being within 6 feet for more than 15 minutes of the active case.

CLEANING

Deep clean the space where the primary exposure person worked.

Q
U
A
R
A
N
T
I
N
E

N
O
Q
U
A
R
A
N
T
I
N
E

CLOSE CONTACT EXPOSURE

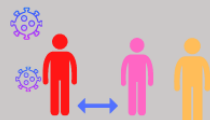
Employee/student is in direct exposure to a close contact OR with someone who has shown COVID-19 symptoms.

NO QUARANTINE

Employee/student should monitor their own symptoms and report daily to their supervisor/school office. If they begin to have symptoms or if the close contact tests positive for COVID-19, the employee/student should self-quarantine and follow CLOSE CONTACT protocol.

NOTIFY your direct supervisor/school nurse. They will inform the District Response Team.

IDENTIFY team members who have been in DIRECT contact with the person presumptive positive.

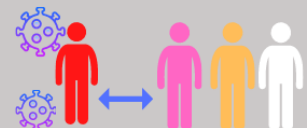


TERTIARY EXPOSURE

Employee/student is in direct contact with a secondary exposure.

NO ACTION unless this employee/student moves to SECONDARY EXPOSURE protocol.

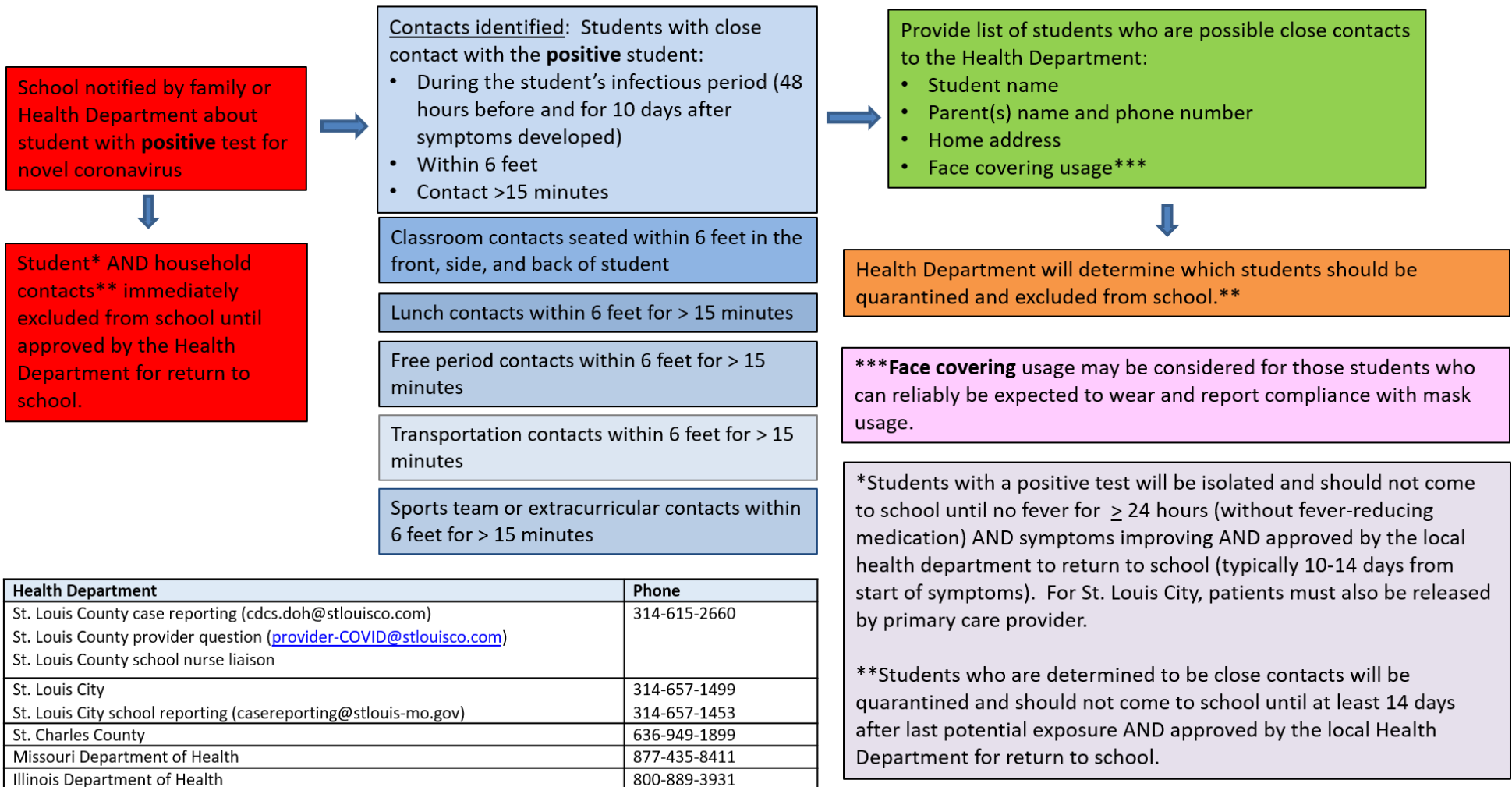
KEEP COMMUNICATION LINES OPEN
PRACTICE SOCIAL DISTANCING
PRACTICE PERSONAL HYGIENE



Additional information, see the school supervisor or [cdc.gov](https://www.cdc.gov).
In cooperation with the Franklin County Health Department.
Prepared by Ketina Armstrong, 8-02-20

N
O
Q
U
A
R
A
N
T
I
N
E

Protocol for Schools Assisting Health Department in Close Contact Identification for COVID-19 Cases



Health Department	Phone
St. Louis County case reporting (cdcs.doh@stlouisco.com)	314-615-2660
St. Louis County provider question (provider-COVID@stlouisco.com)	
St. Louis County school nurse liaison	
St. Louis City	314-657-1499
St. Louis City school reporting (casereporting@stlouis-mo.gov)	314-657-1453
St. Charles County	636-949-1899
Missouri Department of Health	877-435-8411
Illinois Department of Health	800-889-3931

Prepared by Rachel Orscheln, revised- 7/20/2020

REOPENING GUIDANCE

The MVR-III Re-Entry Plan was developed using guidance from:

Area Health Organizations

Centers for Disease Control

Department of Health & Senior Services

Franklin County Health Department

Missouri Department of Elementary & Secondary Education

St. Louis County Health Department

The logo for Meramec Valley R-III School District, featuring the text "MVR-III" in a large, white, italicized, sans-serif font with a double outline, set against a solid purple rectangular background.The text "Meramec Valley R-III School District" in a white, bold, sans-serif font, positioned below a thin white horizontal line within the same purple rectangular background.