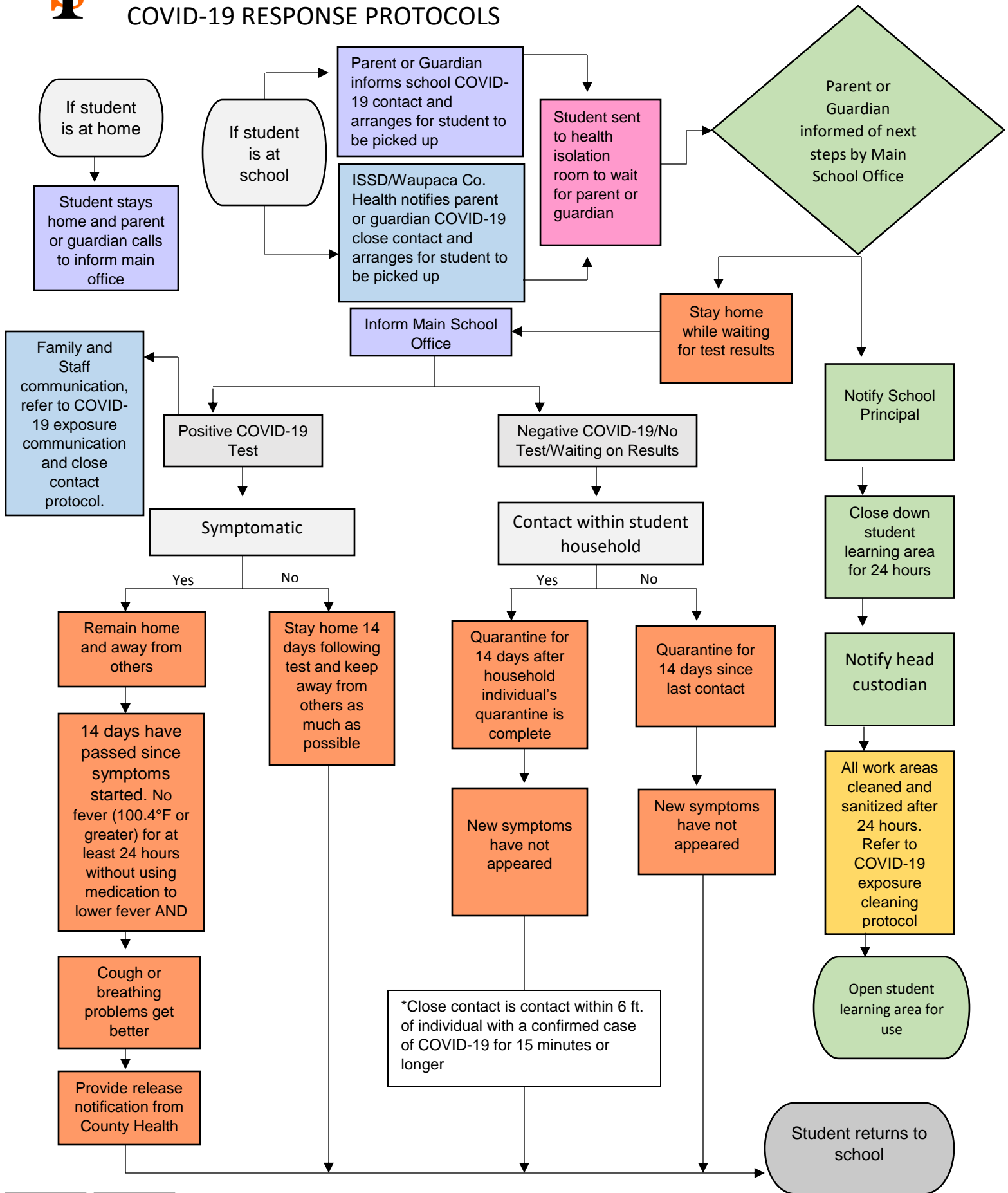




# STUDENT CLOSE CONTACT\* WITH CONFIRMED COVID 19 INDIVIDUAL

## COVID-19 RESPONSE PROTOCOLS



Student    Parent    Teacher    Principal    Custodial Services    District Office

\*Close contact is contact within 6 ft. of individual with a confirmed case of COVID-19 for 15 minutes or longer