

# Sweet Caroline

arr. B. Vallandingham

Neil Diamond

The musical score for "Sweet Caroline" is presented in three staves. The first staff begins with a treble clef, a key signature of two flats (B-flat and E-flat), and a 4/4 time signature. A tempo marking of ♩=132 is placed above the first measure. The melody starts with a whole rest, followed by a quarter rest, and then a quarter note G4. The second staff begins with a measure number '6' and continues the melody with quarter notes A4, B4, and C5, followed by a half note B4. The third staff begins with a measure number '12' and continues with quarter notes A4, B4, and C5, followed by a half note B4. The piece concludes with a double bar line.



# Sweet Caroline

arr. B. Vallandingham

Neil Diamond

Clarinet

Musical notation for Clarinet, measures 1-5. The staff is in 4/4 time. Measure 1: whole rest. Measure 2: whole rest. Measure 3: quarter notes G4, A4. Measure 4: quarter notes B4, A4. Measure 5: quarter notes G4, F4.

6

Musical notation for Clarinet, measures 6-10. Measure 6: quarter notes G4, A4. Measure 7: quarter notes B4, A4. Measure 8: quarter notes G4, F4. Measure 9: whole rest. Measure 10: quarter notes G4, A4.

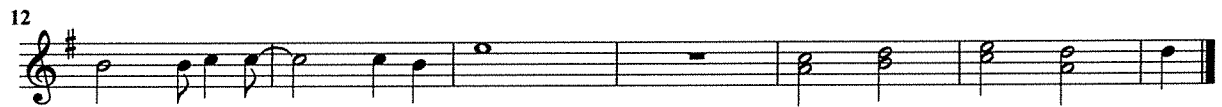
12

Musical notation for Clarinet, measures 11-14. Measure 11: quarter notes G4, A4. Measure 12: quarter notes B4, A4. Measure 13: quarter notes G4, F4. Measure 14: quarter notes G4, A4, ending with a double bar line.

# Sweet Caroline

arr. B. Vallandingham

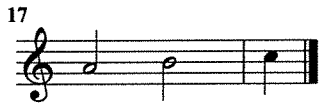
Neil Diamond



# Sweet Caroline

arr. B. Vallandingham

Neil Diamond



# Sweet Caroline

arr. B. Vallandingham

Neil Diamond

1st Trumpet



6



12



18



# Sweet Caroline

arr. B. Vallandingham

Neil Diamond

2nd Trumpet

5

10

16

The image shows a musical score for the 2nd Trumpet part of the song 'Sweet Caroline'. The score is written in 4/4 time and consists of four staves. The first staff is labeled '2nd Trumpet' and contains the first four measures of the piece. The second staff is labeled '5' and contains measures 5 through 8. The third staff is labeled '10' and contains measures 9 through 12. The fourth staff is labeled '16' and contains measures 13 through 15, ending with a double bar line. The music features a mix of eighth and quarter notes, with some chords and rests.

# Sweet Caroline

arr. B. Vallandingham

Neil Diamond

Mellophone



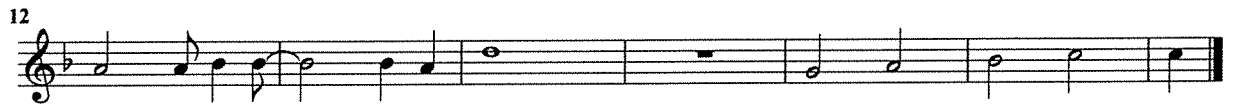
Musical notation for Mellophone, measures 1-5. The key signature has one flat (B-flat) and the time signature is 4/4. The melody consists of eighth and quarter notes.

6



Musical notation for Mellophone, measures 6-10. Measure 6 starts with a treble clef and a B-flat key signature. Measure 10 contains a triplet of eighth notes.

12



Musical notation for Mellophone, measures 11-15. Measure 11 starts with a treble clef and a B-flat key signature. The piece concludes with a double bar line at the end of measure 15.



# Sweet Caroline

arr. B. Vallandingham

Neil Diamond

Trombone



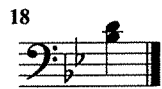
6



12



18



# Sweet Caroline

arr. B. Vallandingham

Neil Diamond

Baritone

The first line of music is in bass clef, 4/4 time, and B-flat major. It contains five measures of music. The notes are: G2 (quarter), A2 (quarter), B2 (quarter), A2-G2 (beamed eighth notes), F2 (quarter), E2 (quarter), D2 (quarter), C2 (quarter), B1 (quarter), A1 (quarter), G1 (quarter), F1 (quarter), E1 (quarter), D1 (quarter), C1 (quarter), B1 (quarter), A1 (quarter), G1 (quarter).

6

The second line of music contains five measures. The notes are: G1 (quarter), F1 (quarter), E1 (quarter), D1 (quarter), C1 (quarter), B1 (quarter), A1 (quarter), G1 (quarter), F1 (quarter), E1 (quarter), D1 (quarter), C1 (quarter), B1 (quarter), A1 (quarter), G1 (quarter), F1 (quarter), E1 (quarter), D1 (quarter), C1 (quarter), B1 (quarter), A1 (quarter), G1 (quarter).

12

The third line of music contains five measures. The notes are: G1 (quarter), F1 (quarter), E1 (quarter), D1 (quarter), C1 (quarter), B1 (quarter), A1 (quarter), G1 (quarter), F1 (quarter), E1 (quarter), D1 (quarter), C1 (quarter), B1 (quarter), A1 (quarter), G1 (quarter), F1 (quarter), E1 (quarter), D1 (quarter), C1 (quarter), B1 (quarter), A1 (quarter), G1 (quarter).

18

The fourth line of music contains two measures. The notes are: G1 (quarter), F1 (quarter), E1 (quarter), D1 (quarter), C1 (quarter), B1 (quarter), A1 (quarter), G1 (quarter), F1 (quarter), E1 (quarter), D1 (quarter), C1 (quarter), B1 (quarter), A1 (quarter), G1 (quarter), F1 (quarter), E1 (quarter), D1 (quarter), C1 (quarter), B1 (quarter), A1 (quarter), G1 (quarter).

# Sweet Caroline

arr. B. Vallandingham

Neil Diamond

Tuba

6

11

16

The image shows a musical score for a Tuba part in 4/4 time, key of B-flat major. The score is divided into four systems. The first system (measures 1-5) consists of a single line of music with a treble clef, a key signature of one flat, and a 4/4 time signature. The second system (measures 6-10) contains five measures, each with a triplet of eighth notes indicated by a '3' over a bracket. The third system (measures 11-15) also contains five measures, each with a triplet of eighth notes. The fourth system (measures 16-17) contains two measures, with the second measure ending in a double bar line. The instrument name 'Tuba' is written at the beginning of the first system.