

Community Zoom

July 31, 2020



2020-21 School Opening

Purpose

- Share plan and rationale for August 11, 2020 start.
- Outline Programs and next steps.
- Provide opportunity for community questions.



Planning Process

During the Spring and Summer we developed plans for 2020-21 reopening

The plans included two options

1. Return to traditional school with safety measures
2. Allow long-term Independent Studies

Plans had to change due to COVID spread





WATERFORD UNIFIED SCHOOL DISTRICT

INSTRUCTIONAL MODELS

2020-21 SCHOOL YEAR



TK – 12 TRADITIONAL LEARNING

START: DISTANCE LEARNING

RETURN: TO ON-SITE SCHOOL



**STUDENTS BEGIN WITH DISTANCE LEARNING
THEN SAFELY RETURN AND LEARN IN SCHOOL**

ALL STUDENTS START ONLINE WITH TEACHER*. STUDENTS WILL TRANSITION BACK TO ON-SITE CLASSES IN ACCORDANCE WITH STANISLAUS COUNTY PUBLIC HEALTH OFFICER GUIDANCE.

*LIMITED ON-SITE INTERACTION MAY OCCUR (TESTS, LABS, ETC.)

INDEPENDENT STUDIES GRADES TK- 6: ONLINE & CONVENTIONAL WORK PACKET (FULL SEMESTER)



STUDENTS SAFELY LEARN AWAY FROM SCHOOL

All students are engaged in learning through a blended model of Online Courses & Conventional Work Packet. Students may schedule additional student-to-teacher time for additional support. Student and Teacher meet weekly on campus / face-to-face at a set schedule while practicing Social Distancing.

INDEPENDENT STUDIES: GRADES 7 – 12 (FULL SEMESTER)



STUDENTS SAFELY LEARN AWAY FROM SCHOOL

All students are engaged in learning through Comprehensive Distance Learning. Instruction occurs remotely with very limited expectations for in-person support. Student and Teacher meet weekly on campus / face-to-face at a set schedule while practicing Social Distancing

ALL INSTRUCTIONAL MODELS CONTAIN:

Grade Level Objectives and Measureable Outcomes • Engaged learning with grade level standards & rigor • Daily attendance • Integrated social emotional learning • Standards-Based content • Interventions & Enrichment to accommodate all learners • Commitment to behavioral and academic growth • Readiness for College and Career

Registration for Independent Studies Starts July 28, 2020 – Please call 209.874.1809 for an appointment or request an appointment online

<https://bit.ly/Instruction2021>

RESPONSE TO CORONAVIRUS PANDEMIC The following checklist are the main categories **considered on a weekly basis** as we approach the reopening of school:

Local Conditions to Guide Reopening Decisions • Plan to Address Positive COVID-19 Cases or Community Surges • Injury and Illness Prevention Protocols • Campus Access • Hygiene • Protective Equipment • Physical Distancing • Cleaning/Disinfecting • Employee Issues • Communication with Parents, Employees, Public Health

TK-12 Traditional Learning

Start: With Distance Learning

Return: to On-Site School

Distance Learning

Daily interaction and teaching from your child's classroom teacher while student learns at home

Curriculum

WUSD approved curriculum, targeted intervention and enrichment

Schedule

Aligned to traditional school day in preparation for phased return to in-person learning when permitted

Time

Classes are scheduled for the mornings and teachers available after lunch for additional help



Distance Learning: What will be different this time?

Live Interaction

Teachers will have to connect with their students each school day through online instruction and/or phone check-ups.

Attendance

Schools must take students' attendance and participation under distance learning, or risk losing state funding.

Students who don't participate will factor into schools' chronic absenteeism figures.

Grading

Unlike last spring where students were "held harmless" for grades, this year assigned work and student participation will factor into a student's grade.

Expectations

Teachers providing instruction and support every day,

Student engaging every day in every class



Distance Learning: Meeting special needs of students

Special Needs

Teachers will and administrators will continue to support students with special needs

English Language Development

Students learning English as a 2nd language be supported with integrated and dedicated ELD instruction

Social-emotional Learning

Our Multi-tiered Systems of Support (MTSS) will continue to operate. (academic, attendance, behaviors, and social-emotional)

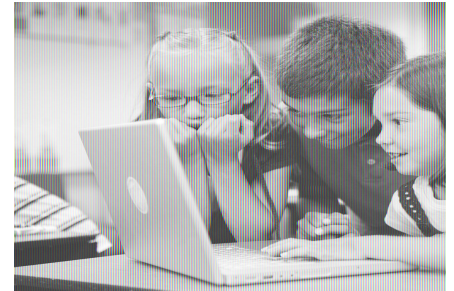


Meeting Instructional Needs

Focus on refined priority standards with additional time for ELA and mathematics at TK-6

Implement a strategic assessment plan to identify unfinished learning and provide intervention

Provide time in the school day to support individual student needs



When do we start?

- Distance Learning Model starts August 11, 2020.
- Time is needed to develop classroom routines, processes and procedures
- Content will gradually “ramp up”
- New experience for all, patience and positive attitudes are a must

Richard Moon Primary School



| Richard Moon Primary School | |
|-----------------------------|--|
| 8:00 - 8:15 | Opening |
| 8:15 - 9:15 | Math/ ELA / Reading / Enrichment |
| Break | |
| 9:30 - 10:45 | Math/ ELA / Reading / Enrichment |
| 10:45 - 11:15 | Math/ ELA / Reading / Enrichment |
| Lunch | |
| 12:00 - 2:15: TK-K-1 | Teacher Office Hours (except Wednesdays) |
| 12:00 - 2:30: 2-3 | Teacher Office Hours (except Wednesdays) |

Lucille Whitehead Intermediate School



| Lucille Whitehead Intermediate | |
|--------------------------------|--|
| 8:00 - 8:30 | English Language Development all students |
| 8:30 - 10:00 | Math / ELA / Enrichment |
| Break | |
| 10:15 - 11:45 | Math/ ELA / Enrichment |
| Lunch | |
| 12:30 - 1:00 | Science & History/Social Studies (except Wednesdays) |
| 1:05 - 2:47 | Teacher Office Hours (except Wednesdays) |

Waterford Junior High School



| Monday (Red Day) | | Tuesday / Thursday (Blue Day) | | | Wednesday / Friday (White Day) | | |
|------------------|--------------|-------------------------------|-------------|--|--------------------------------|-------------|--|
| 1 | 8:15-8:50 | 1 | 8:15-9:35 | Class Instruction (synchronous) | 2 | 8:15-9:35 | Class Instruction (synchronous) |
| 2 | 8:55-9:30 | | | Independent work, small group (asynchronous) | | | Independent work, small group (asynchronous) |
| 3 | 9:35-10:10 | 3 | 9:40-11:00 | Class Instruction (synchronous) | 4 | 9:40-11:00 | Class Instruction (synchronous) |
| 4 | 10:15-10:50 | | | Independent work, small group (asynchronous) | | | Independent work, small group (asynchronous) |
| 5 | 10:55-11:30 | 5 | 11:05-12:25 | Class Instruction (synchronous) | 6 | 11:05-12:25 | Class Instruction (synchronous) |
| 6 | 11:35-12:10 | | | Independent work, small group (asynchronous) | | | Independent work, small group (asynchronous) |
| LUNCH | 12:10-12:45 | LUNCH | 12:25-1:00 | | LUNCH | 12:25-1:00 | |
| Office Hours | 12:50 - 2:30 | Office Hours | 1:05 - 2:30 | | Office Hours | 1:05 - 2:30 | |

Waterford High School

Sentinel High School



| Monday (Red Day) | | Tuesday / Thursday (Blue Day) | | | Wednesday / Friday (Gold Day) | | |
|------------------|-------------|-------------------------------|--------------|---|-------------------------------|--------------|---|
| 1 | 8:00-8:35 | 1 | 8:00-9:30 | Class Instruction (synchronous) | 2 | 8:00-9:30 | Class Instruction (synchronous) |
| 2 | 8:40-9:25 | | | Independent work, small group (asynchronous) | | | Independent work, small group (asynchronous) |
| 3 | 9:30-10:05 | 3 | 9:40-10:55 | Class Instruction (synchronous) | 4 | 9:40-10:55 | Class Instruction (synchronous) |
| 4 | 10:15-10:50 | | | Independent work, small group (asynchronous) | | | Independent work, small group (asynchronous) |
| 5 | 10:55-11:30 | 5 | 11:00-12:25 | Class Instruction (synchronous) | 6 | 11:00-12:25 | Class Instruction (synchronous) |
| 6 | 11:35-12:10 | | | Independent work, small group (asynchronous) | | | Independent work, small group (asynchronous) |
| Lunch | 12:10-12:45 | LUNCH | 12:25 - 1:00 | | LUNCH | 12:25 - 1:00 | |
| Office Hours | 12:50-2:36* | Office Hours | 1:05 -2:36* | Student Support, Intervention, Parent Contact | Office Hours | 1:05-2:36* | Student Support, Intervention, Parent Contact |

Personal Protective Equipment and Safety Protocols

Procure Personal Protective Equipment (PPE) for students and staff

Follow state and local guidelines to maintain health and safety throughout school campuses

Implement sanitation and disinfection protocols for all working environments

Increase personal hygiene standards for hand washing and sanitizing and monitor changes to guidelines and update practices accordingly

Independent Studies



TK-6 classes begin August 10-14, 2020
7-12 classes begin August 11, 2020

Independent Studies Grades (IS) TK-6



Parents

Parents facilitate the learning, and assist their children to stay on task and maintain satisfactory progress

Curriculum

Parents will receive district approved curriculum and meet with IS teacher to sequence the material roughly in line with the DL model.

Students

Students work independently at home, guided by their parents/guardians and maintaining the pace agreed to with the Independent Studies teacher

I.S. Teacher

Meets weekly with student to collect work and provide new material as needed. Coordinates with student and parent regarding the pacing of the independent work.

Independent Studies Grades (IS) TK-6



Duration

Program begin
August 17 and
continue to
December 17

Scheduling Meetings

The TK-6 I.S.
Coordinator will
contact you and begin
scheduling
appointments
August 10 - 14

Materials & Devices

The TK-6 I.S.
Coordinator and I.S.
teacher will provide
curriculum and
materials at the initial
meeting and at the
weekly scheduled
meeting.

Attendance

Attendance is credited
as a combination of
completed assignments
and being present for
weekly meetings.

Poor attendance is
cause for removal from
I.S.

Independent Studies Grades 7-12: Acellus Online Courses

Coordinator

(Tonya Bibbins)

Meets with student and parent to select online courses that lead to promotion and graduation.

Student

Student works independently according to the schedule of lessons or tasks associated with the online course.

I.S. Teacher

The I.S. teacher meets weekly with student to verify lesson completion and monitor progress on the online courses



Acellus Courses

Acellus provides a comprehensive selection of core and elective courses. The college preparatory courses meet University of California requirements for admission.

Child Nutrition and Transportation



Provide Grab and Go meal pick up for Distance Learning & Independent Study Learning Model schedule. Families will be served at a single location.

Update serving procedures to reduce contact through packaging and PPE

Schedule student lunches and arrange seating with social distancing norms when in-person learning resumes

Implement safety and sanitation protocols on all buses when in-person learning resumes



Technology Services



hotline

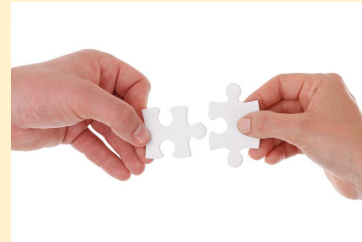


Provide internet connectivity to students where needed

Create shared internet connection environments

Campus Wi-Fi in parking lots, quads, and multi-purpose rooms

Connect families with providers of reduced-cost home internet



Host a dedicated student and parent technology phone line (209)874-1630

Leave a message and get a call back between 7:00 am and 4:30 pm

- ❑ **Distribute textbooks, learning materials, and Chromebooks**
- ❑ **Provide support for technology concerns**
- ❑ **Develop detailed phase-in return plan for safe return to in-person instruction**



Next Steps



Q & A

