

Bishop Unified School District

Reopening for 2020 - 2021

Special Board Meeting

Thursday, July 30, 2020

Via Zoom



A collaborative process

- Public Health (CAPH, ICPH)
- Centers for Disease Control & Prevention (CDC)
- CA Department of Education (CDE)
- Primary Care Physicians
 - American Academy of Pediatrics (AAP)
- Neighboring school districts (RVUSD, BPUSD, OVUSD, LPUSD, DVUSD, ICOE, MUSD, ESUSD) & CA county offices
- Our staff
- Our families



CA & County Status

How are COVID-19 cases progressing in each county?

California Statistics

Total Population: 40,129,160

Note: HHS Significantly changed reporting requirements resulting in historical data from non-reporting facilities not being part of today's update. This data will be added back in as soon as it is available.

127,671

New Cases (Last 14 Days)
318.2 Per 100K
475,305 Total Cases

1,488

New Deaths (Last 14 Days)
3.7 Per 100K
8,715 Total Deaths

1,724,190

Tests Reported (Last 14 Days)
7.4% Test Positivity
3.1 Daily per 1,000 Residents
7,517,466 Total Tests Reported



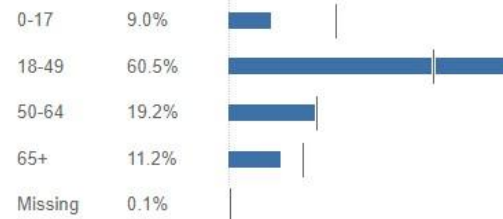
Positive Cases New Cases Total Deaths New Deaths

Positive Cases by County

Los Angeles	179,107
Riverside	36,458
Orange	34,832
San Bernardino	30,493
San Diego	28,007
Kern	18,834
Fresno	13,933



Positive Cases by Age



Inyo Statistics

Total Population: 18,453

Note: HHS Significantly changed reporting requirements resulting in historical data from non-reporting facilities not being part of today's update. This data will be added back in as soon as it is available.

8

New Cases (Last 14 Days)
43.4 Per 100K
43 Total Cases

0

New Deaths (Last 14 Days)
0.0 Per 100K
1 Total Deaths

603

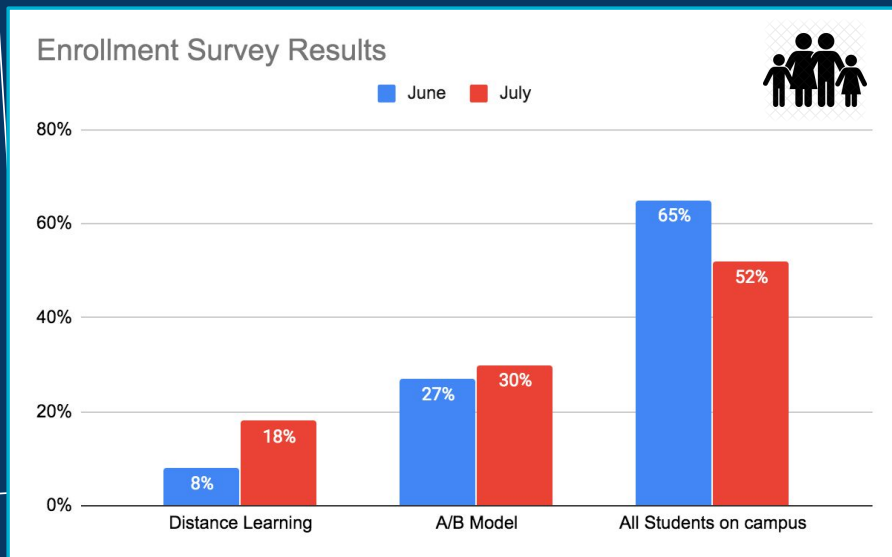
Tests Reported (Last 14 Days)
1.3% Test Positivity
2.3 Daily per 1,000 Residents



Family Enrollment Surveys

[early] June - [late] July 2020

- **Distance Learning**
8% → 18%
- **A/B model**
27% → 30%
- **All students on campus**
65% → 52%



- All Inyo County schools are planning on reopening in August.

Enrollment Preference Impacts Class Sizes

**with 18% distance learning*

BES – 26 students average → 21 in a class

A/B – 13 students → 11 per class

HSMS – 29 students average → 24 in a class

(PE 64 → 52 , Band 52 → 43 , Science 38 → 31)

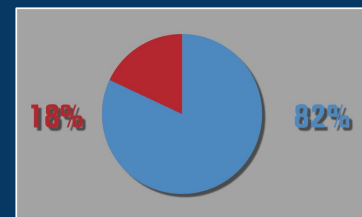
A/B – 15 students → 12 per class

BUHS – 27 students average → 22 in a class

A/B – 14 students → 11 per class

PGHS – 14 students → 11 in a class

A/B – 7 students → 6 per class



Rough estimate -
400 students
district-wide may
enroll in full-time
distance learning

Distance Learning Requirements (SB98)

- Student **access to internet** connectivity **and devices** to participate in the educational program
- Quality, challenging content aligned to grade level standards **equivalent to in-person instruction**
- **Supports** to address the needs of students
- Special education, related services, and **accommodations required** by an individualized education program
- Designated and integrated instruction in **English language development**
- **Daily live interaction** with certificated employees *and peers*
- Required **weekly engagement record** for each student (in addition to daily participation log)
- **Daily Instructional Minute Requirement** (may include time value of assignments):
 - 180 minutes for kindergarten (3 hours)
 - 230 minutes for grades 1-3 (3 hours, 50 minutes)
 - 240 minutes for grades 4-12 (4 hours)
- Access to school **meals**



Distance Learning vs. In-Seat



Considerations for **students**

- **SB98:** LEAs should provide in-person instruction “to the greatest extent possible”
 - DL is an option for any BUSD student
- **CDC (July 23)**
 - Most children infected by family members, not at school
 - 6.6% of cases are under the age of 18
 - School closures increase risk of family conflict and violence and worsen achievement gaps

Considerations for **staff**

- Transmission is usually adult-adult
- Staff are more likely than students to fall within vulnerable population subgroups
- Positive cases may be asymptomatic while contagious
- Testing turnaround time for results is long (about 2 weeks)
- Meeting the needs of in-seat students and DL students simultaneously is challenging

CDPH & CDC Recommended Reopening Considerations

1. Transmission rates
2. Cohorting
3. Implement multiple strategies
 - Face coverings, good hygiene, distancing, cleaning, disinfecting & ventilating
4. Signage, wellness/symptom checks
5. Consider co-curricular & extracurricular participation & distancing strategies
6. Prepare for when someone gets sick

Reopening Considerations



1. **COVID-19 transmission rates** in the community

Inyo County C19 Positivity Rate – 1.3%

- 46 positive test results (as of 7/29/20)
 - 8 in the last 14 days, 39 recovered, 337 pending
- The state of CA currently has a 7.5% positivity rate
- Counties with an 8% or higher positivity rate must close and provide distance learning



Reopening Considerations

2. Approaches to cohorting that fit the needs of your school/district and community. Can unused or underutilized school spaces, including outdoor spaces, be repurposed to increase classroom space and facilitate social distancing?

Options include

- Staggering recess/break/lunch schedules
- A/B model and/or block scheduling for grades 6-12
- Providing and utilizing shaded outdoor spaces



Reopening Considerations

3. Concurrently implement multiple strategies in school to prevent the spread of COVID-19 (e.g., social distancing, cloth face coverings, hand hygiene, and use of cohorting)

What's in place

- Social distancing
- Face coverings
- Hand sanitizer stations on campuses, large scale disinfecting machines, UV sanitation lamps, daily cleaning checklists for common spaces & high touch surfaces
- Ventilated classrooms, use of outdoor spaces
- Creative master scheduling



Reopening Considerations

4. Communicate, educate, and reinforce **personal protective behaviors** to prevent the spread of COVID-19 in school and in the community

Communicating appropriately to families about home-based symptom screening

What's in place

- Signage on campuses
- Daily wellness checks
 - Adjustments in attendance policies & incentives
 - Stay home when you're not well
- Plans for staff members to test throughout the school year
- Option for families to participate in distance learning

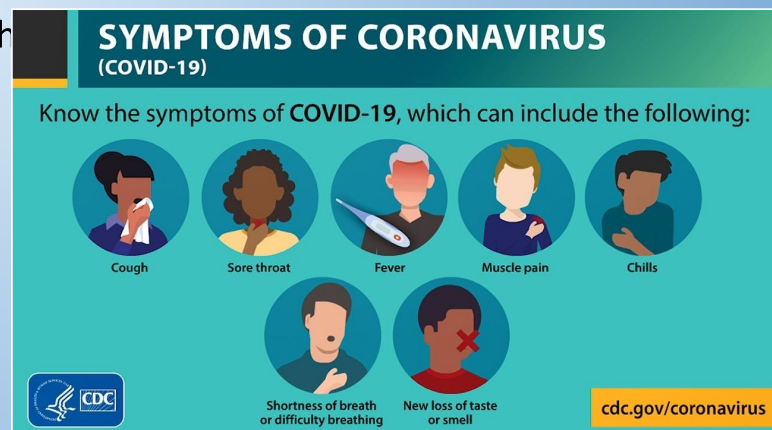


CDC Symptom Guidelines



Updated as of 7/23/20

- CDC does not currently recommend universal symptom screenings (screening all students grades K-12) be conducted by schools. CDPH does recommend universal screenings.
- Parents or caregivers should be strongly encouraged to monitor their children for signs of infectious illness every day.
- ~~Symptom screenings will identify only~~ Symptom screenings will identify only that a person may have an illness, not that the illness is COVID-19.
- Many symptoms overlap with other more common illnesses



CDC Symptom Guidelines



Updated as of 7/23/20

CDC argues: “Students who are sick with contagious illnesses should not attend school, but most illnesses do not require the same level or length of isolation that COVID-19 does. Excluding students from school for longer than what is called for in existing school policies (e.g., fever free without medication for 24-hours) based on COVID-19 symptoms alone risks repeated, long-term unnecessary student absence.”

- Children younger than age 10 are less likely to become infected with SARS-CoV-2
- Symptom screenings may be more helpful when COVID-19 transmission in the community is high.

Daily Home Screening

- Section 1: Symptoms (student can possibly return the next day)
- Section 2: Exposure (student is tested & stays home for at least 10 days)

Home Screening Checklist



SECTION 1: Symptoms

If your child has any of the following symptoms, that indicates a possible illness that may decrease the student's ability to learn and also put them at risk for spreading illness to others. Please check your child for these symptoms:

<input type="checkbox"/>	Temperature 100.4 degrees Fahrenheit or higher when taken by mouth;
<input type="checkbox"/>	Sore throat;
<input type="checkbox"/>	New uncontrolled cough that causes difficulty breathing (for students with chronic allergic/asthmatic cough, a change in their cough from baseline);
<input type="checkbox"/>	Diarrhea, vomiting, or abdominal pain
<input type="checkbox"/>	New onset of severe headache, especially with a fever.

SECTION 2: Close Contact/Potential Exposure

<input type="checkbox"/>	Had close contact (within 6 feet of an infected person for at least 15 minutes) with a person with confirmed COVID-19; OR
<input type="checkbox"/>	Had close contact (within 6 feet of an infected person for at least 15 minutes) with person under quarantine for possible exposure to SARS-CoV-2; OR
<input type="checkbox"/>	Traveled to or lived in an area where the local, Tribal, territorial, or state health department is reporting large numbers of COVID-19 cases as described in the Community Mitigation Framework
<input type="checkbox"/>	New uncontrolled cough that causes difficulty breathing (for students with chronic allergic/asthmatic cough, a change in their cough from baseline);
<input type="checkbox"/>	Live in areas of high community transmission (as described in the Community Mitigation Framework) while the school remains open

Reopening Considerations

5. Integrate strategies to reduce COVID-19 transmission into co-curricular & extracurricular activities (e.g., limiting participation in activities where social distancing is not feasible)

What's in the works

- Designated areas on fields/playgrounds for classes
- Modifications: athletics, PE classes, recess/playgrounds
- Band and choir outdoors
- Desks spaced apart in classrooms to maximize distancing
- Use of outdoor spaces



Reopening Considerations

6. Planning and preparing for when someone gets sick

Working with state and local health authorities to develop a plan to conduct contact tracing in the event of a positive case

Our plan

- C19 exposure scenario communication protocols
- Direct communication with Public Health and Bishop Pediatrics when student has symptoms (Toiyabe TBD)
- All assignments/lessons on Google Classroom (grades 2-12)
- Cleaning procedures & equipment
- Secure substitute teachers

PPE



The following will be used for the health and safety of our students, families, and staff (and there is more coming):

- **Black and white cloth masks** that are washable/reusable for children and adults (300 black/4000 white)
- 8 oz **bottles of hand sanitizer** for classrooms and offices. (1200)
- Free standing **hand sanitation stations** for all campuses (40)
- **N95 masks** for health offices (320)
- **Disposable surgical masks** (adult and children) (5000)
- Plastic **face shields** for teachers and aides (520)
- **Touchless thermometers** for classrooms and offices (95)
- Disinfecting “**fogging**” **machines** (5)
- **UV Sanitation Lamps** (10)

Scheduling Recommendations:

- **Sites**
- **Teacher’s Union**

Draft updated as of 7/22/20

Bishop Unified School District Flexible Scheduling Guide				
	Distance Learning 5 days a week	Blended Model A/B groups 2 days per week (DL 1 day per week - Mon)	Students on campus 4 days a week (Tues-Fri) (DL 1 day per week - Mon)	Students on campus 5 days a week (Regular/Normal Operations)
All Students Districtwide or schoolwide	<ul style="list-style-type: none"> Inyo County has issued a “stay at home” order and/or is on CA’s County Monitoring List Campuses have been ordered to close by Public Health or the State of CA High rate of community spread (local daily positivity rate above 8%) 5% or greater rate of active cases at school site(s) 	<ul style="list-style-type: none"> Inyo County is at risk of being on CA’s County Monitoring List or recently taken off of it Increasing rate of community spread (local daily positivity rate between 5-8%) Positive cases among close contacts of students/staff at school site(s) 	<ul style="list-style-type: none"> Inyo County has been off CA’s County Monitoring List for at least 14 days Low and stable rate of community spread (local daily positivity rate below 5%) No positive cases on site(s) 	<ul style="list-style-type: none"> Inyo County is in Phase 4 of Reopening COVID vaccine is readily available COVID testing is readily available
Individual Student(s) Based on family preference or individual family circumstances	<ul style="list-style-type: none"> Student/family member is high-risk or vulnerable to infection Student/family has been directed to self-isolate due to COVID risks Student thrives in a distance learning environment Family is able to actively and regularly support student(s) academically at home 	<ul style="list-style-type: none"> This option will be given as a district-wide directive based on the considerations above (not open to individual/case-by-case preferences) 	<ul style="list-style-type: none"> Student/family health risk is low and/or work and childcare schedules support or necessitate students being on campus as much as possible 	<ul style="list-style-type: none"> Welcome Back!

*All scenarios: All students and staff are required to wear face coverings throughout the day when 6’ of social distancing is not feasible, per CDPH mandate

Site level recommendations



Reopening Recommendation: Bishop Elementary (TK-5)

4-Day a Week Model

- Research shows that children under 10 are not as impacted by C19
- Easier to cohort students in self-contained grade level classes
- Especially important for primary students to get fundamentals of phonemic awareness and phonics and number sense- 2 days a week would make this very difficult to do
- 5 days a week on campus for SDC students depending on their IEPs (some may be high medical risk) as well as CDS students who are not high risk
- We expect smaller class sizes due to 18% estimating full-time DL
 - Desks 3' - 6' ft apart
- AM/PM model and hybrid model were taken into consideration but pose some additional challenges (e.g., transportation, cleaning between cohorts, doesn't limit staff exposure [staff exposed to both cohorts daily])



Reopening Recommendation:

Home Street Middle School (6-8)

A/B Model with Block Schedule

- Block scheduling - 3 classes per day plus homeroom (homeroom classes stagger lunch breaks)
- CDS students in school 5 days a week
- SDC students in school 5 days a week
 - possible exceptions per IEP, if medically fragile

Covid-19 Block Schedule All or A/B			
	Beginning	End	Ttl min
First Bell	8:10		
Block 1	8:15	10:03	1:48
Break	10:03	10:13	0:10
Block 2	10:17	12:05	1:48
Lunch 1/HR1	12:09	12:39	0:30
Lunch 2/HR2	12:43	1:13	0:30
Block 3	1:17	3:05	1:48

Covid-19 Tues-Fri All or A/B			
	Beginning	End	Ttl min
First Bell	8:10		
Period 1	8:15	9:07	0:52
Period 2	9:11	10:03	0:52
Break	10:03	10:13	0:10
Period 3	10:17	11:09	0:52
Period 4	11:13	12:05	0:52
Lunch 1/HR1	12:09	12:39	0:30
Lunch 2/HR2	12:43	1:13	0:30
Period 6	1:17	2:09	0:52
Period 7	2:13	3:05	0:52



Reopening Recommendation:

Alternative Education

PGHS, KBS, BIS

PGHS: 4-Day a Week Model

- Essentially 1 cohort on campus (all students see all teachers)
- Small student:teacher ratios allow 6' distancing in classrooms
- All students ride the bus to and from campus
- Students in alt ed are at risk or high risk - relationships are important
- Prefer Fridays or Wednesdays as DL day

KBS: 5 days a week

BIS: 1 day/face-to-face meeting a week (existing structure)



Reopening Recommendation: Bishop Union High School (9-12)

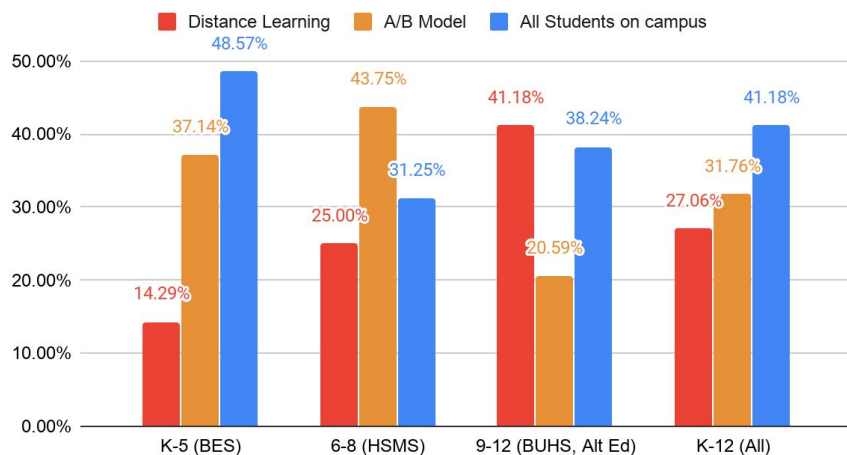
A/B Model [with Normal Daily Schedule]

- 7 classes per day (students in each class twice a week)
- CDS students in school 5 days a week
- SDC students in school 5 days a week (possible exceptions per IEP, if medically fragile)
- A significant # of staff members are “not comfortable” coming back to campus with all students
- Prefer Fridays or Wednesdays as DL day
 - Fridays may be more conducive to family schedules and wrapping up the week with all students (in-seat A/B's and DL) together via virtual classes
 - Wednesdays may be more conducive to cleaning between cohorts

Bishop Teachers Association Recommendation

BTA would like to recommend distance learning for grades 6-12 with some sort of way to have in person cohorts to set up distance learning in the beginning. For grades K-5, we would like to suggest an AM/PM split Monday through Friday as transportation should be easier with grades 6-12 being distance learning. For families who want distance learning at the elementary level, we suggest exploring the option of distance learning specialist.

BTA Survey Results



1st day of BUSD 2020-2021 School Year: August 17, 2020

