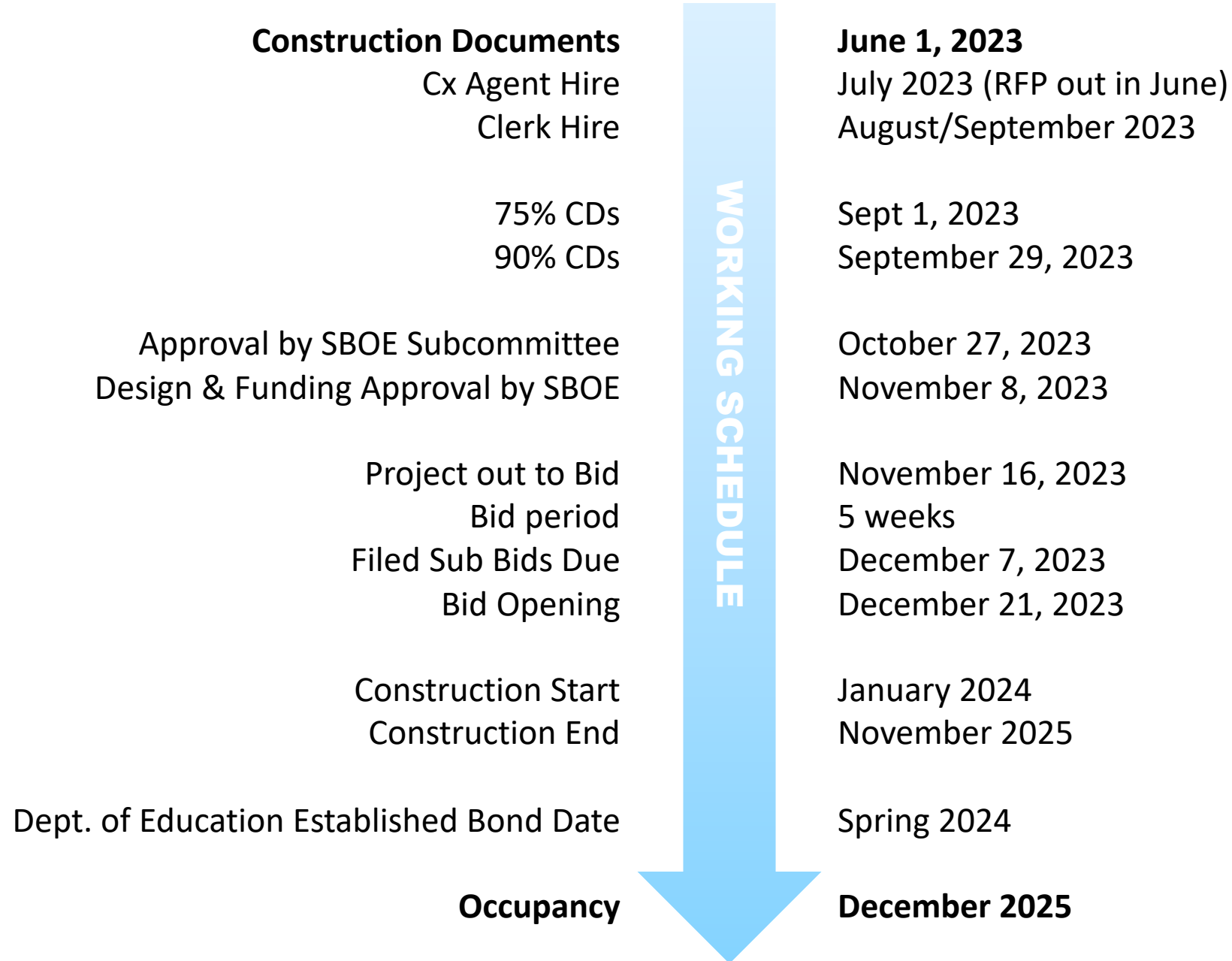


# DOE Meeting **MSAD 49**

June 14, 2023

## MEETING AGENDA:

1. Project Schedule
2. Work Update
3. Work In-Progress
4. Design Updates



## WORK UPDATE:

1. Geotechnical engineer hired by MSAD 49
  - A. Borings and probes completed.
    - a) DD includes boring log information
    - b) Final Geotech report will be received soon.
2. CHA met with Finishes & Furnishings committee on 5/1
3. Met with State Fire Marshal's Office on 5/4
4. Technology consultant hired by MSAD 49
  1. Kick-off meeting with technology subcommittee held on 5/10
5. DEP and DOT applications submitted.
  1. Informational meeting for abutters held on 5/17
6. Cost Estimate completed
7. 100% Design Development drawings and specs completed.
8. Met with Fire Chief on 6/12 to review plans.



## **WORK IN PROGRESS:**

1. DWM finalizing easement with CMP
2. Meeting with local code enforcement to be scheduled when Benton CEO returns.
  - a) Reviewing multi-user restroom strategy with State and Local plumbing inspectors

## **NEXT STEPS:**

1. Send RFP for Commissioning Agent.
  1. Hire end of June/Early July
2. Advertise and hire for Clerk of the Works position.
3. Planning Board meeting to be scheduled.
4. Pre-qualify contractors this Summer



Budget

## UPDATE:

Cost  
Estimate

- Design Team reviewed and confirmed quantities, unit prices, etc.
- Building and site estimates both within the concept budget amount.

Bid  
Alternates

- Includes all alternates, except for paving at back parking lot.
- ☐ Operable Partition
- ☐ Solar Shades
- ☐ Bleachers
- ☐ Paving the Back Parking Lot (Behind BES)

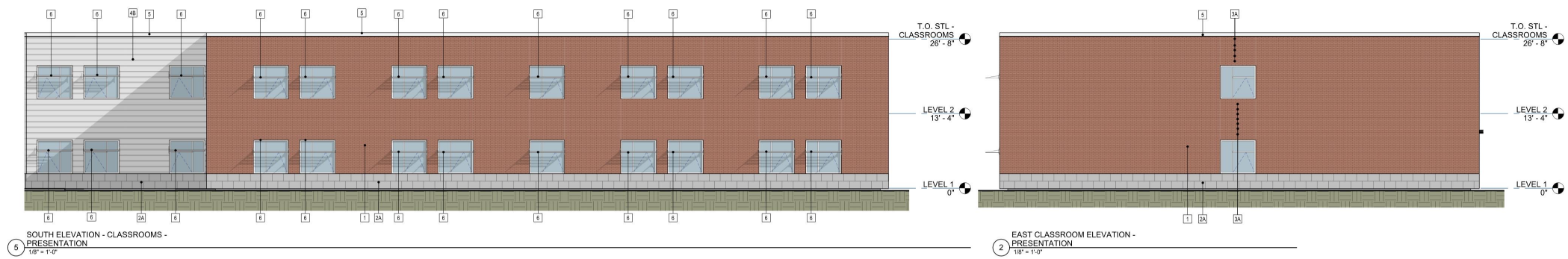
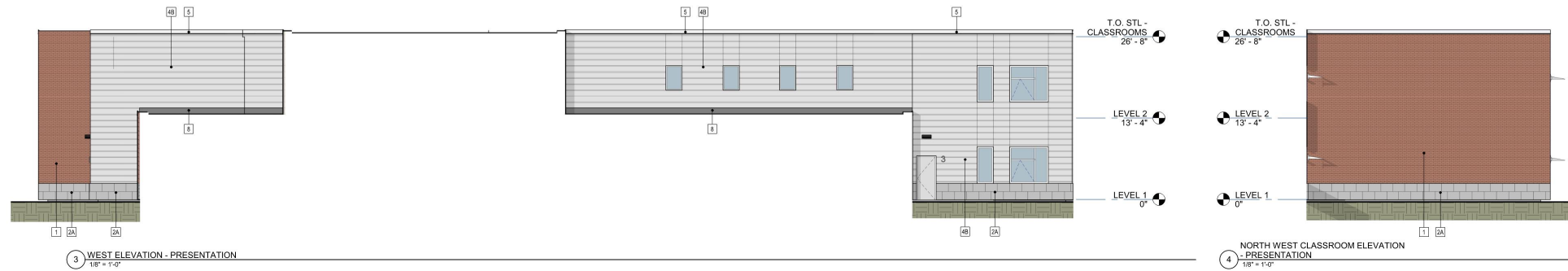
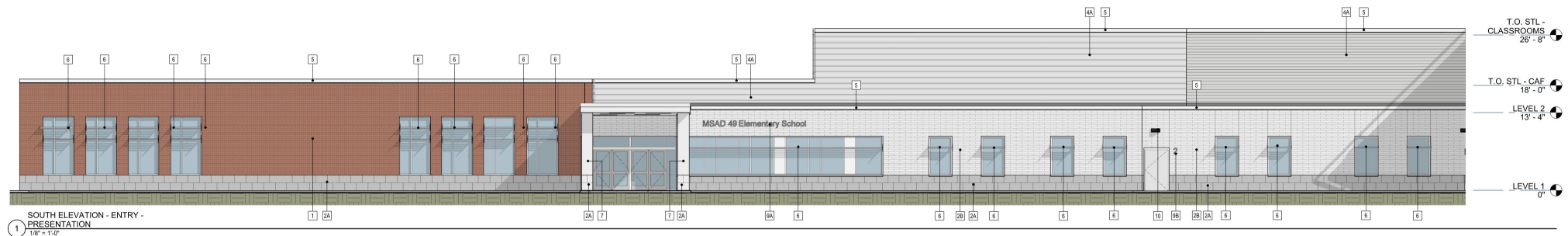
## **Filed Sub Bids:**

1. Site
2. Mechanical
3. Electrical
4. Fire Protection
5. Drywall/Framing
6. Masonry



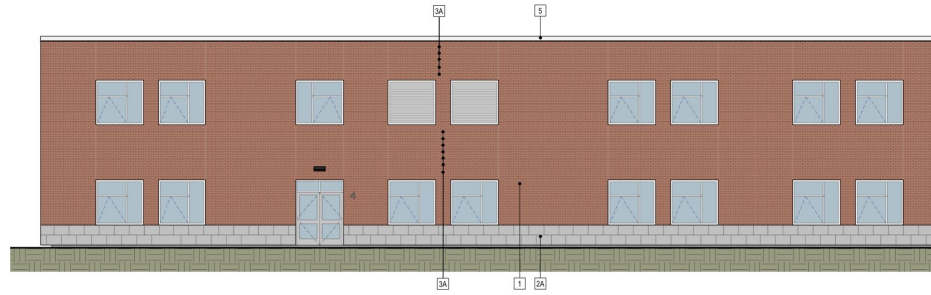


**LEVEL 2 FLOOR PLAN**

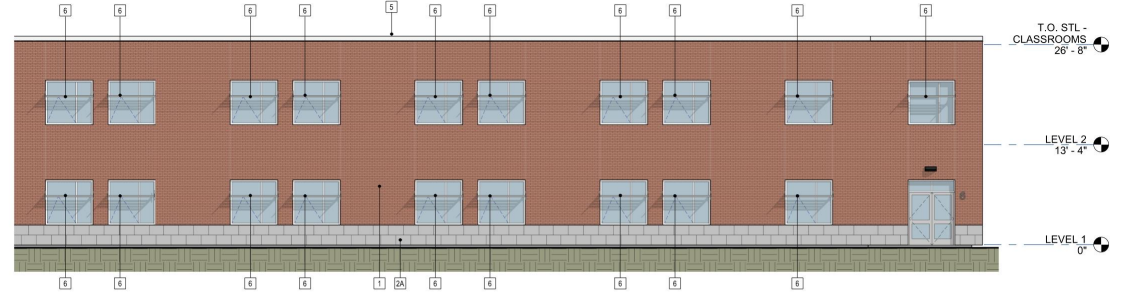


# BUILDING ELEVATIONS

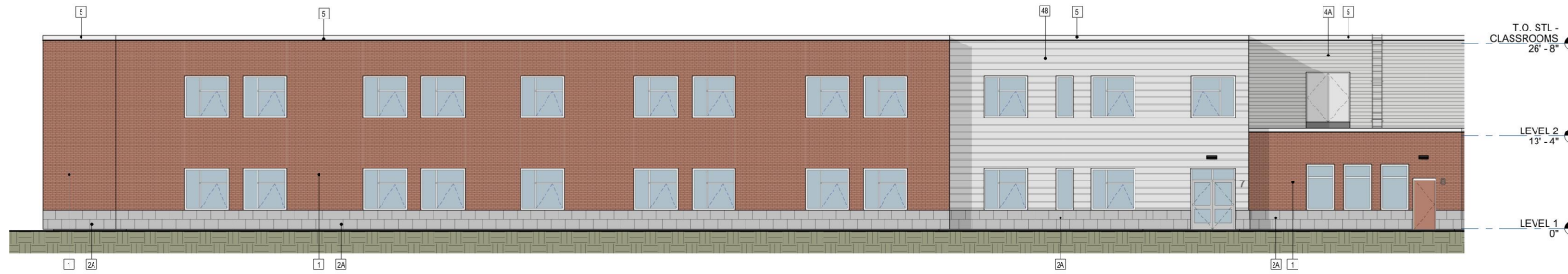




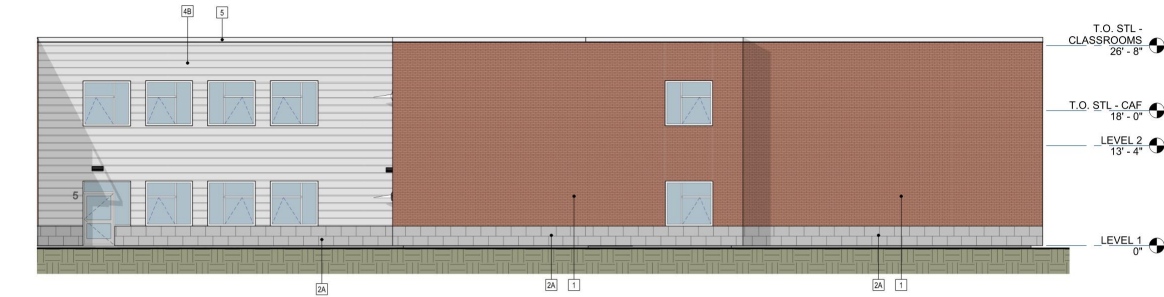
1 NORTH COURTYARD ELEVATION -  
PRESENTATION  
1/8" = 1'-0"



2 SOUTH COURTYARD ELEVATION -  
PRESENTATION  
1/8" = 1'-0"

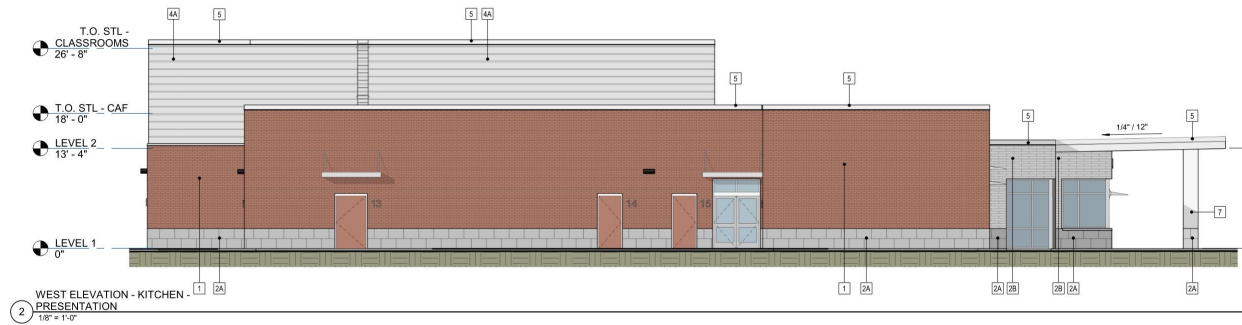
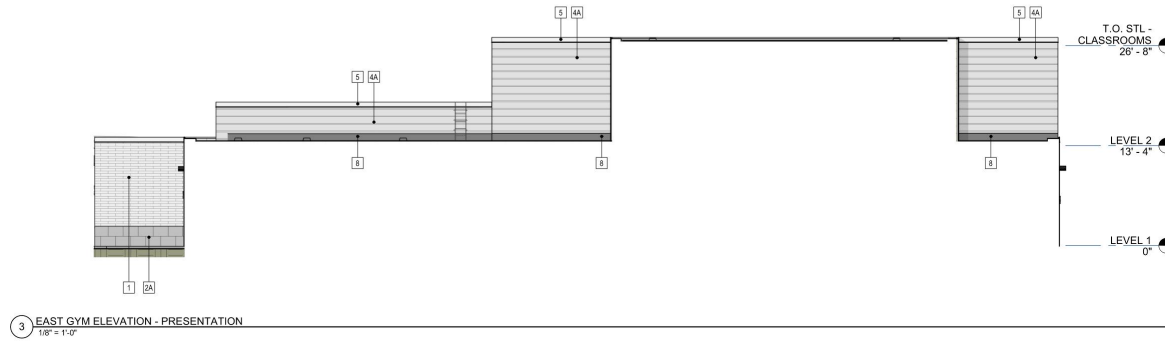
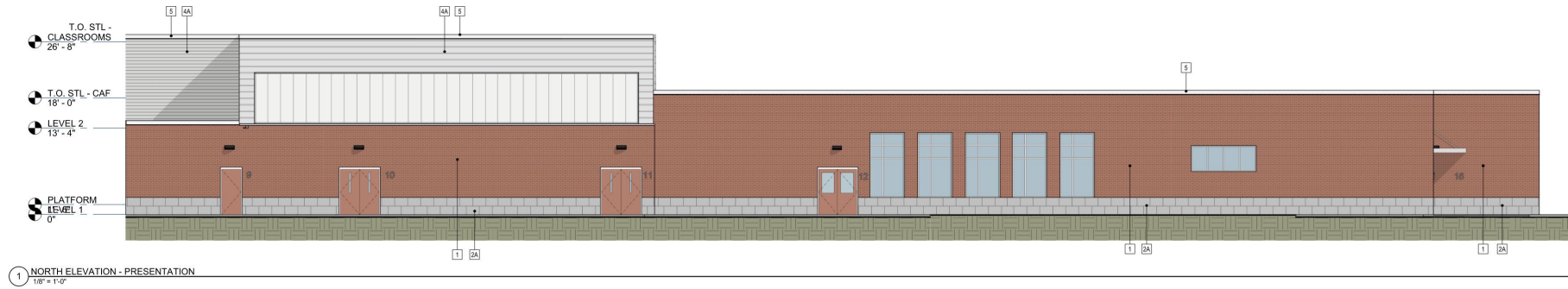


4 NORTH CLASSROOM ELEVATION -  
PRESENTATION  
1/8" = 1'-0"



3 WEST CLASSROOM ELEVATION -  
PRESENTATION  
1/8" = 1'-0"

## BUILDING ELEVATIONS



## BUILDING ELEVATIONS





3D RENDERING





**3D RENDERING**