

LAKE HAMILTON

PRIMARY SCHOOL



Ready for Learning

July 29, 2020

LAKE HAMILTON

PRIMARY SCHOOL



TABLE OF CONTENTS

Page 1: Arrival at School, Departure from School, Bus Requirements

Page 2: Student Health Screenings, Hydration, Face Coverings, Hand & Respiratory Hygiene, School Nurse Protocol

Page 3: Breakfast, Lunch, Restroom Breaks, Recess/Social Time, Visitors at School

Page 4: Physical Distancing in Classrooms, Blended Learning, Virtual Learning, Learning Management System, Parent Resources

Page 5: Open House, Student Mobile Devices, Communication with Teachers, Specialty Classes, Dyslexia Intervention

Page 6: Mental Health Counseling, Special Education Services

Page 7: Gifted Education, English for Speakers of Other Languages, Lake Hamilton is Here

**136 Oakbrook
Percy, AR 71964
501-767-9351**

ARRIVAL AT SCHOOL



Bus Arrival: Students will report directly to classrooms when they arrive on campus by bus. Breakfast will be served in the classroom.



Car Arrival: Students will report directly to classrooms when they arrive on campus by car. Breakfast will be served in the classroom. Parents will not be allowed to walk students to the doors. All students will exit from a vehicle in the car rider lane. Duty personnel will begin unloading car doors at 7:25 a.m.

DEPARTURE FROM SCHOOL

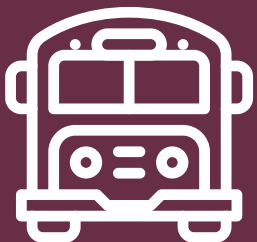
Bus Departure: Buses will begin dismissing at 3:05 p.m. Students will wait in their classrooms for each individual bus shift to dismiss.



Car Departure: Car riders will be dismissed at 2:30 p.m. All parents will drive through the car rider line. No parents will be allowed out of their vehicle.



BUS REQUIREMENTS



Face coverings will be required for bus drivers and all student passengers while riding on any school bus due to the inability to properly distance from others.

STUDENT HEALTH SCREENINGS



Parents will screen students daily, including taking body temperature, before sending/bringing their children to school.

HYDRATION

Water fountains will not be used; instead, bottle filling stations will be provided. Please send a water bottle to school with your child each day labeled with his/her name.



FACE COVERINGS



Face coverings are **required** for students in grades K - 12 at times when social distancing of six feet or more cannot be assured. Face coverings may be removed during instructional time in classrooms and at other times when appropriate distancing among students and between students and teachers is achieved.

HAND & RESPIRATORY HYGIENE

Students will sanitize before and after leaving the classroom (specials, recess, and lunch) and anytime a student gets up from their desk and moves around the classroom. Students will wash their hands after using the restroom. Students will be taught proper coughing and sneezing etiquette.

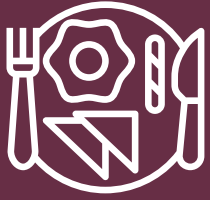


SCHOOL NURSE PROTOCOL



The school nurse will be notified when a student is being sent to his/her office. The student will be checked for symptoms. If a student is showing symptoms, he/she will be isolated in a separate area until a parent/guardian arrives to pick him/her up.

BREAKFAST



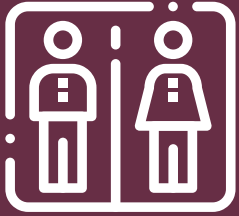
Breakfast will be served in the classroom.

LUNCH

There will be 4 lunch periods, one period for each hallway. Each class will have their own table in the cafeteria and will have one seat in between each student. Lunch visitors will not be allowed



RESTROOM BREAKS



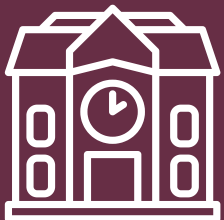
Each classroom has their own restroom. Students will use the restroom in their classroom.

RECESS / SOCIAL TIME

There will be 12 recess periods. Students will be in groups of 130 or less at recess. Equipment will be sanitized frequently.

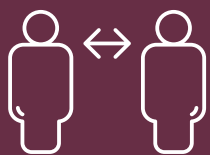


VISITORS AT SCHOOL



When possible, parents and visitors should call the school to make an appointment with school staff. Many issues may be resolved by utilizing telephone or online resources. Guests for lunch are not allowed.

PHYSICAL DISTANCING IN CLASSROOMS



Students will physically distance in classrooms as space allows. Non-essential furniture and equipment will be removed from classrooms.

BLENDED LEARNING

Teachers and students will utilize SeeSaw Learning Management System. Lessons will be posted on SeeSaw multiple times per week. Students will complete lessons during whole group and small group time. Students will use Lexia and iStation Math for supplemental online learning programs.



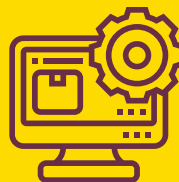
VIRTUAL LEARNING



Teachers and students will utilize SeeSaw Learning Management System. Lessons will be posted on SeeSaw multiple times per week. Students will use Lexia and iStation Math for supplemental online learning programs. Teachers will post teaching videos to address new learning. Assignments given through SeeSaw will compliment video-recorded lessons.

LEARNING MANAGEMENT SYSTEM

SeeSaw and Google Sites.



PARENT RESOURCES



A parent tutorial video will be created to teach parents how to use SeeSaw. Videos will be released prior to school beginning to explain the new procedures for car rider arrival and dismissal. Information regarding Lexia and iStation will be sent home to all parents. A FAQ page will be available on our website.

OPEN HOUSE



Open house for incoming kindergarten and first grade students will be done by appointment only. Teachers will contact the parent/guardian of each student to set up an appointment. Open house appointments are limited to two adults per student (no siblings).

Kindergarten Open House & School Start Date: Open house appointments for incoming kindergarten students will be held August 24 (12:00 - 7:00 p.m.) and August 25 (9:00 a.m. - 2:00 p.m.). The first day of school for kindergarten students will be Wednesday, August 26, 2020.

First Grade Open House: Open house appointments for incoming first grade students will be held August 12 (9:00 a.m. - 2:00 p.m.) and August 13 (12:00 - 7:00 p.m.). The first day of school for first grade students will be Monday, August 24, 2020.

STUDENT MOBILE DEVICES

Chromebooks will be issued to students for daily use in centers, morning work, and while group instruction. If on-site learning is transitioned to online only, Chromebooks will be sent home to students. Students will only use the Chromebook assigned to them.



COMMUNICATION WITH TEACHERS



SeeSaw will be used for parent communication. The primary school will also use this to send out any whole-school announcements.

SPECIALTY CLASSES

Specialty classes include art, music, physical education, computer lab, library, etc. Equipment and supplies will be sanitized between use.



DYSLEXIA INTERVENTION



Students who qualify for dyslexia services will continue to receive small group intervention. If on-site learning is transitioned to online learning only, students will work with the dyslexia interventionist via Google Meet.

MENTAL HEALTH COUNSELING

Jill Burton and Amy Humphries are the two counselors at the primary school. They will be the point of contact for all mental health related concerns. If needed, the district's school-based mental health provider will be contacted. The district continues to partner with four community mental health agencies.



SPECIAL EDUCATION SERVICES



IEP Implementation

Blended (on-site) Learning: IEPs will be implemented as written as long as on-site learning is available; if crisis learning is implemented, plans may need to be amended.

LH Virtual Academy: IEPs may be amended by committees to better meet the learning environment.

Speech, Occupational, and/or Physical Therapy

Blended (on-site) Learning: Due to the hands-on nature of therapy, our therapists will wear protective equipment.

LH Virtual Academy: Provided via teletherapy or provided on campus at a scheduled time.

Special Education: Inclusion Classes (formerly known as co-teaching)

Blended (on-site) Learning: Special education teacher assists students in the general education classroom.

LH Virtual Academy: Special education teacher will collaborate with the LH Virtual Academy teacher online.

Special Education: Resource Classes

Blended (on-site) Learning: Students attend small classes for literacy and/or math (40 - 79% of the school day).

LH Virtual Academy: Special education teacher will provide virtual instruction.

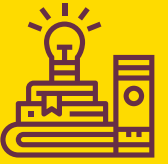
Special Education: Self-Contained Classes

Blended (on-site) Learning: Students attend separate classes for any academic subject (80% or more of the school day).

LH Virtual Academy: Special education teacher will provide virtual instruction. Parent-teacher consultation. Academic or functional help may be provided on campus at scheduled times.

GIFTED EDUCATION

The GT specialist will travel to classrooms weekly or provide virtual enrichment, if necessary.



ENGLISH FOR SPEAKERS OF OTHER LANGUAGES (ESOL)



English learners will receive small group intervention for language acquisition and sheltered instruction in their classrooms. If the school transitions to online learning only, students will work with the ESOL teacher via Google Meet.

LHSD IS HERE FOR YOU

Now more than ever before, Lake Hamilton is here for you. The safety of our students and staff is our number one priority. Our goal will be to provide the safest experience possible. That includes a rich educational experience with opportunities for social interaction and extracurricular activities while adhering to guidelines provided by the Department of Elementary and Secondary Education and the Arkansas Department of Health. Please visit our website (lhwolves.net) for up to date information regarding the reopening plans for the 2020-21 school year. Scan the QR code to be taken to the "Lake Hamilton is Here" website . This website includes all things related to reopening school this fall.



One Pack. One Purpose. Our Students' Success!

#LHWOLFNACTION