

# LAKE HAMILTON

## JUNIOR HIGH

LAKE HAMILTON  
JR. HIGH

LAKE HAMILTON  
JR. HIGH  
*Ready for Learning*

July 29, 2020

# LAKE HAMILTON

## JUNIOR HIGH



---

### TABLE OF CONTENTS

**Page 1:** Arrival at School, Departure from School, Bus Requirements

**Page 2:** Student Health Screenings, Hydration, Face Coverings, Hand & Respiratory Hygiene, School Nurse Protocol

**Page 3:** Breakfast, Lunch, Restroom Breaks, Recess/Social Time, Visitors at School

**Page 4:** Physical Distancing in Classrooms, Blended Learning, Virtual Learning, Learning Management System, Parent Resources

**Page 5:** Open House, Student Mobile Devices, Communication with Teachers, Mental Health Counseling, Dyslexia Intervention

**Page 6:** Special Education Services, Student Lockers

**Page 7:** Athletics, Band, English for Speakers of Other Languages, Gifted Education

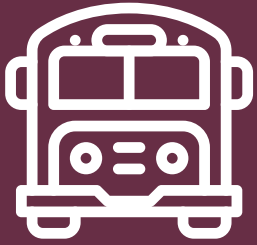
**Page 8:** Lake Hamilton is Here

---

**281 Wolf Street  
Pearcy, AR 71964  
501-767-2731**



# ARRIVAL AT SCHOOL



**Bus Arrival:** Students will report to their first period class once they arrive on campus. Face coverings will be required during transitions and when physical distancing cannot be maintained.



**Car Arrival:** Student drop off will begin at 7:15 a.m. Those dropped off between 7:15 and 7:30 a.m. will remain in the cafeteria until they report to their first period classrooms at 7:30 a.m. Social distancing in the cafeteria will be in place with marked seats. Face coverings will be required during transitions and when physical distancing cannot be maintained. Cafeteria overflow will report to the tarmac or gym bleachers.

# DEPARTURE FROM SCHOOL

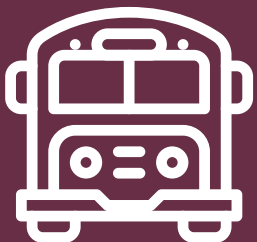
**Bus Departure:** Buses will begin dismissing at 3:05 p.m. Students will wait in their 8th period classrooms for each individual bus shift to dismiss. Face coverings will be worn during the transition to the buses and while riding on the school bus.



**Car Departure:** Car riders will be dismissed at 3:00 p.m. Students will report to the tarmac while waiting for their parents/guardians to arrive. All parents will drive through the car rider line. No parents will be allowed out of their vehicles. Students and staff will wear face coverings during transition and in the car rider dismissal area.



# BUS REQUIREMENTS



Face coverings will be required for bus drivers and all student passengers while riding on any school bus due to the inability to properly distance from others.

# STUDENT HEALTH SCREENINGS



Parents will screen students daily, including taking body temperature, before sending/bringing their children to school.

## HYDRATION

Water fountains will not be used; instead, bottle filling stations will be provided. Please send a water bottle to school with your child each day labeled with his/her name.



## FACE COVERINGS



Face coverings are **required** for students in grades K - 12 at times when social distancing of six feet or more cannot be assured. Face coverings may be removed during instructional time in classrooms and at other times when appropriate distancing among students and between students and teachers is achieved.

## HAND & RESPIRATORY HYGIENE

School staff will be proactive in the teaching of hand and respiratory hygiene to students. Hand sanitizer will be available in all classrooms and throughout the building. Students will sanitize hands when entering/exiting each classroom and during breakfast/lunch. Signage will be posted throughout the building encouraging good hygiene practices.



## SCHOOL NURSE PROTOCOL



The school nurse will be notified when a student is being sent to his/her office. The student will be checked for symptoms. If a student is showing symptoms, he/she will be isolated in a separate area until a parent/guardian arrives to pick him/her up.

# BREAKFAST



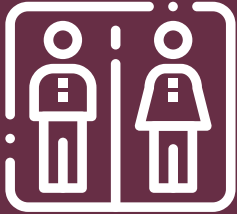
A grab-and-go breakfast will be available beginning at 7:30 a.m. each day. Students will receive the grab-and-go breakfast from the cafeteria and will report to their first period class to eat.

# LUNCH

Lunch will be served in the cafeteria. Up to 108 students may be seated in the cafeteria during lunch. Other locations for students to utilize while eating lunch include the tarmac, library, or gym bleachers. Face coverings must be worn at all times, except when eating or drinking, when physical distancing cannot be maintained. No visitors will be allowed during lunch.



# RESTROOM BREAKS



Restrooms will be monitored between and during classes by school staff. Face coverings must be worn during transitions and while in the restroom. Hands must be washed and/or hand sanitizer must be used when leaving or entering the classroom. Sign in and sign out sheets for the restroom will be placed in each classroom to document student restroom use during class.

# RECESS / SOCIAL TIME

Students will be allowed to socialize during lunch. No equipment (footballs, toys, etc.) are allowed. Face coverings must be worn when physical distancing cannot be maintained.

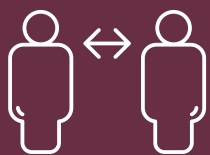


# VISITORS AT SCHOOL



When possible, parents and visitors should call the school to make an appointment with school staff. Many issues may be resolved by utilizing telephone or online resources. Guests for lunch are not allowed.

# PHYSICAL DISTANCING IN CLASSROOMS



Students will physically distance in classrooms as space allows. Non-essential furniture and equipment will be removed from classrooms. Face coverings will be worn when physical distancing is not possible.

## BLENDED LEARNING

Teachers and students will be expected to utilize Canvas while in each class to prepare for school closure at anytime due to a pandemic, inclement weather day, suspension, etc. Students will spend time in each class working through teacher-team developed modules that allow the teacher to facilitate learning blended with live instruction. NWEA testing will be used as a diagnostic assessment to determine intervention to meet individual student needs.



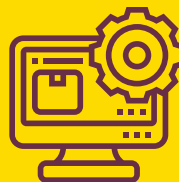
## VIRTUAL LEARNING



Teachers and students will be expected to utilize Canvas if enrolled in the Lake Hamilton Virtual Academy. Students will have the flexibility for synchronous/asynchronous learning as LHVA teachers will have sections built in through the day for students to attend live or view later through recorded versions.

## LEARNING MANAGEMENT SYSTEM

Canvas and Virtual Arkansas.



## PARENT RESOURCES



Parent and student videos will be available to provide information regarding what school will look like prior to the first day of school. Social emotional learning resources will be provided to parents by building counselors and school based mental health counselors to utilize at home. FAQ documents will be provided to parents prior to the first day of school on the school website.

# OPEN HOUSE



Open house will be done virtually for incoming eighth and ninth grade students. Teachers will create "Meet the Teacher" videos that will be placed online for students and parents to view. A drive through schedule pick up will be held on August 18 from 8:00 a.m. - 3:00 p.m. LHJH student council will create a virtual tour of the building and an informational video that will be placed on the website.

## STUDENT MOBILE DEVICES

A Chromebook and set of headphones will be issued to each student.



## COMMUNICATION WITH TEACHERS



Teachers will communicate with parents through phone, text message, email, and the messaging system through Canvas. Teachers will also communicate virtually through Google Meet when appropriate. Parents are encouraged to download the free Lake Hamilton School District App (search Lake Hamilton Wolves in the App Store or on Google Play). Informational videos for parents will be placed on the school website and social media pages.

## MENTAL HEALTH COUNSELING

School counselors and school based mental health counselors will coordinate services based on student need as well as provide information and resources to students and parents on a regular basis. If needed, the district's school-based mental health provider will be contacted. The district continues to partner with four community mental health agencies.



## DYSLEXIA INTERVENTION



Students who qualify for dyslexia services will continue to receive small group intervention. If on-site learning is transitioned to online learning only, students will work with the dyslexia interventionist via Google Meet.

# SPECIAL EDUCATION SERVICES



## **IEP Implementation**

Blended (on-site) Learning: IEPs will be implemented as written as long as on-site learning is available; if crisis learning is implemented, plans may need to be amended.

LH Virtual Academy: IEPs may be amended by committees to better meet the learning environment.

## **Speech, Occupational, and/or Physical Therapy**

Blended (on-site) Learning: Due to the hands-on nature of therapy, our therapists will wear protective equipment.

LH Virtual Academy: Provided via teletherapy or provided on campus at a scheduled time.

## **Special Education: Inclusion Classes (formerly known as co-teaching)**

Blended (on-site) Learning: Special education teacher assists students in the general education classroom.

LH Virtual Academy: Special education teacher will collaborate with the LH Virtual Academy teacher online.

## **Special Education: Resource Classes**

Blended (on-site) Learning: Students attend small classes for literacy and/or math (40 - 79% of the school day).

LH Virtual Academy: Special education teacher will provide virtual instruction.

## **Special Education: Self-Contained Classes**

Blended (on-site) Learning: Students attend separate classes for any academic subject (80% or more of the school day).

LH Virtual Academy: Special education teacher will provide virtual instruction. Parent-teacher consultation. Academic or functional help may be provided on campus at scheduled times.

## STUDENT LOCKERS

Student lockers will not be used until further notice.





# ATHLETICS



Athletic programs will follow directives and guidelines set in place by the Arkansas Activities Association, Arkansas Department of Health, and the Department of Elementary and Secondary Education.

# BAND

The band programs will follow directives and guidelines set in place by the Arkansas Activities Association, Arkansas Department of Health, and the Department of Elementary and Secondary Education.



# ENGLISH FOR SPEAKERS OF OTHER LANGUAGES (ESOL)



English learners will receive small group intervention or embedded support for language acquisition and sheltered instruction in their classrooms. If the school transitions to online learning only, students will work with the ESOL teacher and/or their classroom teacher(s) via Google Meet.

# GIFTED EDUCATION

Students will be provided on-site GT opportunities. If necessary, virtual GT opportunities will be provided.



# LHSD IS HERE FOR YOU

Now more than ever before, Lake Hamilton is here for you. The safety of our students and staff is our number one priority. Our goal will be to provide the safest experience possible. That includes a rich educational experience with opportunities for social interaction and extracurricular activities while adhering to guidelines provided by the Department of Elementary and Secondary Education and the Arkansas Department of Health. Please visit our website ([lhwolves.net](http://lhwolves.net)) for up to date information regarding the reopening plans for the 2020-21 school year. Scan the QR code to be taken to the "Lake Hamilton is Here" website . This website includes all things related to reopening school this fall.



*One Pack, One Purpose, Our Students' Success!*

**#LHWOLFNACTION**