

LAKE HAMILTON

INTERMEDIATE SCHOOL



LAKE HAMILTON INTERMEDIATE

Ready for Learning

July 29, 2020

LAKE HAMILTON

INTERMEDIATE SCHOOL



TABLE OF CONTENTS

Page 1: Arrival at School, Departure from School, Bus Requirements

Page 2: Student Health Screenings, Hydration, Face Coverings, Hand & Respiratory Hygiene, School Nurse Protocol

Page 3: Breakfast, Lunch, Restroom Breaks, Recess/Social Time, Visitors at School

Page 4: Physical Distancing in Classrooms, Blended Learning, Virtual Learning, Learning Management System, Parent Resources

Page 5: Open House, Student Mobile Devices, Communication with Teachers, Specialty Classes, Dyslexia Intervention

Page 6: Mental Health Counseling, Special Education Services

Page 7: Gifted Education, English for Speakers of Other Languages, Lake Hamilton is Here

**104 Wolf Street
Pearcy, AR 71964
501-767-4111**

ARRIVAL AT SCHOOL



Bus Arrival: Students will report directly to their homeroom classroom when they arrive on campus by bus. Breakfast will be served in the classroom.



Car Arrival: Duty personnel will begin unloading car doors at 7:30 a.m. Students will report directly to their homeroom classroom when they arrive on campus. Breakfast will be served in the classroom. Parents will not be allowed to walk students to the building. All students will exit from a vehicle in the car rider line.

DEPARTURE FROM SCHOOL

Bus Departure: Buses will begin dismissing at 3:05 p.m. Students will wait in their homeroom classroom for each individual bus shift to dismiss.



Car Departure: Car riders will be dismissed at 2:55 p.m. Dismissal will be done by quad groups. All parents will drive through the car rider line. No parents will be allowed out of their vehicle. Students and staff will wear face coverings in the car rider dismissal area.



BUS REQUIREMENTS



Face coverings will be required for bus drivers and all student passengers while riding on any school bus due to the inability to properly distance from others.

STUDENT HEALTH SCREENINGS



Parents will screen students daily, including taking body temperature, before sending/bringing their children to school.

HYDRATION

Water fountains will not be used; instead, bottle filling stations will be provided. Please send a water bottle to school with your child each day labeled with his/her name.



FACE COVERINGS



Face coverings are **required** for students in grades K - 12 at times when social distancing of six feet or more cannot be assured. Face coverings may be removed during instructional time in classrooms and at other times when appropriate distancing among students and between students and teachers is achieved.

HAND & RESPIRATORY HYGIENE

Staff will teach and reinforce proper hand-washing, coughing, and sneezing techniques. Hand sanitizer will be available in all classrooms. Hand-washing will be encouraged before entering the classroom.

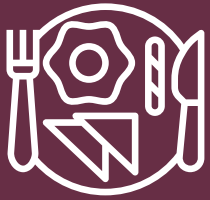


SCHOOL NURSE PROTOCOL



The school nurse will be notified when a student is being sent to his/her office. The student will be checked for symptoms. If a student is showing symptoms, he/she will be isolated in a separate area until a parent/guardian arrives to pick him/her up.

BREAKFAST



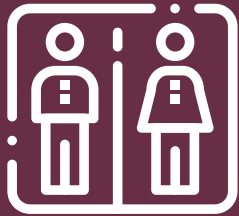
Breakfast will be served in the classroom. Options for grab-and-go will be considered after the first week of school.

LUNCH

Lunch will be served in the cafeteria. Students will be directed to eat in either the cafeteria or the gym. On nice days, the outdoor classroom may be used as an eating location for students. Students will rotate between eating venues. No visitors are allowed during lunch.



RESTROOM BREAKS



Each quad group will be assigned a restroom and time for use. School staff will approve student restroom visits outside of any assigned restroom times, as necessary. Restrooms will be monitored by teachers. Face coverings must be worn during transitions to the restroom and while in restrooms.

RECESS / SOCIAL TIME

Outdoor areas will be divided into sections. Students will rotate these sections as directed by school staff. Equipment will be cleaned frequently. Face coverings will be worn when social distancing isn't possible.

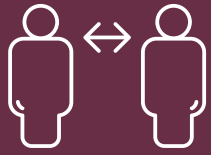


VISITORS AT SCHOOL



When possible, parents and visitors should call the school to make an appointment with school staff. Many issues may be resolved by utilizing telephone or online resources. Guests for lunch are not allowed.

PHYSICAL DISTANCING IN CLASSROOMS



Students will physically distance in classrooms as space allows. Non-essential furniture and equipment will be removed from classrooms.

BLENDED LEARNING

Teachers will engage students using Google Classroom and SeeSaw. Assignments will be made daily using Google Classroom or SeeSaw. NWEA testing will be utilized.



VIRTUAL LEARNING



Teachers and students will be engaged in Google Classroom and SeeSaw. Daily lessons will be taught virtually. Teachers will teach a "live lesson" daily and record it for later viewing. Students will be able to ask questions during the live sessions. Assignments will be made daily using Google Classroom and SeeSaw.

LEARNING MANAGEMENT SYSTEM

Google Classroom, Google Meet, and SeeSaw.



PARENT RESOURCES



Parent and student videos will be available to provide information regarding what school will look like prior to the first day of school. Social emotional learning resources will be provided to parents by building counselors and school based mental health counselors to utilize at home. FAQ documents will be provided to parents prior to the first day of school on the school website.

OPEN HOUSE



Open house will be done virtually for incoming fourth and fifth grade students. Teachers will contact parents to share information regarding the virtual open house. Virtual open house videos will be recorded for anyone not able to watch the live feed. Tours of the building may be arranged by calling the intermediate school office to set up an appointment. Face coverings will be required for any tours.

STUDENT MOBILE DEVICES

A Chromebook will be issued to each student.



COMMUNICATION WITH TEACHERS



Teachers will communicate with parents through email, Google services, Dojo, and SeeSaw. When more serious issues arise, phone calls will be made. Parents are encouraged to download the free Lake Hamilton School District App (search Lake Hamilton Wolves in the App Store or on Google Play). Informational videos for parents will be placed on the school website and social media pages.

SPECIALTY CLASSES

Specialty classes include art, music, physical education, computer lab, library, etc. Equipment and supplies will be sanitized between use.



DYSLEXIA INTERVENTION



Students who qualify for dyslexia services will continue to receive small group intervention. If on-site learning is transitioned to online learning only, students will work with the dyslexia interventionist via Google Meet.

MENTAL HEALTH COUNSELING

Shanna Lamm and Karyn Lowery are the two counselors at the intermediate school. They will be the point of contact for all mental health related concerns. If needed, the district's school-based mental health provider will be contacted. The district continues to partner with four community mental health agencies.



SPECIAL EDUCATION SERVICES



IEP Implementation

Blended (on-site) Learning: IEPs will be implemented as written as long as on-site learning is available; if crisis learning is implemented, plans may need to be amended.

LH Virtual Academy: IEPs may be amended by committees to better meet the learning environment.

Speech, Occupational, and/or Physical Therapy

Blended (on-site) Learning: Due to the hands-on nature of therapy, our therapists will wear protective equipment.

LH Virtual Academy: Provided via teletherapy or provided on campus at a scheduled time.

Special Education: Inclusion Classes (formerly known as co-teaching)

Blended (on-site) Learning: Special education teacher assists students in the general education classroom.

LH Virtual Academy: Special education teacher will collaborate with the LH Virtual Academy teacher online.

Special Education: Resource Classes

Blended (on-site) Learning: Students attend small classes for literacy and/or math (40 - 79% of the school day).

LH Virtual Academy: Special education teacher will provide virtual instruction.

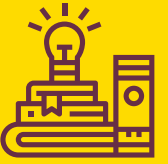
Special Education: Self-Contained Classes

Blended (on-site) Learning: Students attend separate classes for any academic subject (80% or more of the school day).

LH Virtual Academy: Special education teacher will provide virtual instruction. Parent-teacher consultation. Academic or functional help may be provided on campus at scheduled times.

GIFTED EDUCATION

Students will meet in the GT classroom weekly. If necessary, virtual lesson opportunities will be provided.



ENGLISH FOR SPEAKERS OF OTHER LANGUAGES (ESOL)



English learners will receive small group or push-in intervention for language acquisition and sheltered instruction in their classrooms. If the school transitions to online learning only, students will work with the ESOL teacher and/or their classroom teacher(s) via Google Meet.

LHSD IS HERE FOR YOU

Now more than ever before, Lake Hamilton is here for you. The safety of our students and staff is our number one priority. Our goal will be to provide the safest experience possible. That includes a rich educational experience with opportunities for social interaction and extracurricular activities while adhering to guidelines provided by the Department of Elementary and Secondary Education and the Arkansas Department of Health. Please visit our website (lhwolves.net) for up to date information regarding the reopening plans for the 2020-21 school year. Scan the QR code to be taken to the "Lake Hamilton is Here" website . This website includes all things related to reopening school this fall.



One Pack. One Purpose. Our Students' Success!

#LHWOLFNACTION

LAKE HAMILTON
INTERMEDIATE SCHOOL

