

LAKE HAMILTON HIGH SCHOOL

LAKE HAMILTON HIGH SCHOOL

Ready for Learning

July 29, 2020

LAKE HAMILTON HIGH SCHOOL



TABLE OF CONTENTS

Page 1: Arrival at School, Departure from School, Bus Requirements

Page 2: Student Health Screenings, Hydration, Face Coverings, Hand & Respiratory Hygiene, School Nurse Protocol

Page 3: Breakfast, Lunch, Restroom Breaks, Recess/Social Time, Visitors at School

Page 4: Physical Distancing in Classrooms, Blended Learning, Virtual Learning, Learning Management System, Parent Resources

Page 5: Open House, Student Mobile Devices, Communication with Teachers, Mental Health Counseling, Dyslexia Intervention

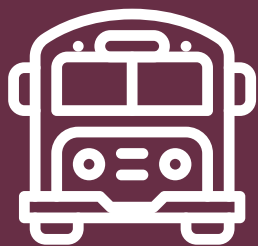
Page 6: Special Education Services, Student Lockers

Page 7: Athletics, Band, English for Speakers of Other Languages, Gifted Education

Page 8: Lake Hamilton is Here

**280 Wolf Street
Pearcy, AR 71964
501-767-9311**

ARRIVAL AT SCHOOL



Bus Arrival: Students will enter the cafeteria and have two options: (1) pick up a grab-and-go breakfast and sit in the cafeteria or (2) report directly to the old gym. Students who will ride a bus to National Park Technology Center for their first period class will enter through the cafeteria, go through the old gym, and exit the old gym to wait on bus pick-up to NPTC.



Car Arrival: Students may begin entering the building at 7:30 a.m. Maroon parking lot students must enter through the main lobby entrance. Gold parking lot students must enter through the 600 hallway door before 8:00 a.m. White parking lot students must enter through the cafeteria before 8:00 a.m. After 8:00 a.m., all students must enter through the main lobby entrance. Car riders must be dropped off in the circle on Class of 2020 Drive or in the circle at the east end of the stadium parking lot. All car riders will enter through the main lobby entrance. Once students have entered the building, they may choose to go to the cafeteria for breakfast or the old gym.

DEPARTURE FROM SCHOOL

Bus Departure: Buses will begin dismissing at 3:05 p.m. Students will wait in their 8th period classroom for each individual bus shift to dismiss. Students will exit the high school through the south-side doors and report to the bus staging area near the junior high. Face coverings will be worn during the transition to the buses and while riding on the school bus.



Car Departure: Students driving or being picked up as a car rider will be dismissed at 3:05 p.m. Students will not be allowed to congregate in the parking lots. Car rider pick up will be in the circle at the east end of the stadium parking lot. All parents will drive through the car rider line. No parents will be allowed out of their vehicle. Students and staff will wear face coverings during transition and in the car rider dismissal area.



BUS REQUIREMENTS



Face coverings will be required for bus drivers and all student passengers while riding on any school bus due to the inability to properly distance from others.

STUDENT HEALTH SCREENINGS



Parents will screen students daily, including taking body temperature, before sending/bringing their children to school.

HYDRATION

Water fountains will not be used; instead, bottle filling stations will be provided. Please send a water bottle to school with your child each day labeled with his/her name.



FACE COVERINGS



Face coverings are **required** for students in grades K - 12 at times when social distancing of six feet or more cannot be assured. Face coverings may be removed during instructional time in classrooms and at other times when appropriate distancing among students and between students and teachers is achieved.

HAND & RESPIRATORY HYGIENE

School staff will be proactive in the teaching of responsible hand and respiratory hygiene to students. Hand sanitizer will be available in all classrooms and through the building. Signage will be posted throughout the building encouraging good hygiene practices.



SCHOOL NURSE PROTOCOL



The school nurse will be notified when a student is being sent to his/her office. The student will be checked for symptoms. If a student is showing symptoms, he/she will be isolated in a separate area until a parent/guardian arrives to pick him/her up.

BREAKFAST



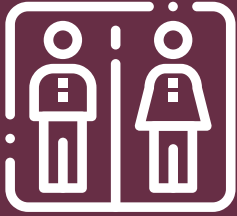
Breakfast will be available at 7:30 a.m. to be eaten in the cafeteria. A grab-and-go breakfast will be available between 2nd and 3rd periods to be eaten in the 3rd period classroom.

LUNCH

Lunch will be served in the cafeteria. Up to 396 students may be seated in the cafeteria during lunch. Other locations for students to utilize while they eat lunch include the band room, library, and wolf den. Students will be assigned a dining area for lunch based on their 4th period class' proximity. Meals will be individually boxed and placed in an area for students to access close to their assigned dining area. Students are required to wear a face covering until seated in a dining area. No visitors will be allowed during lunch.



RESTROOM BREAKS



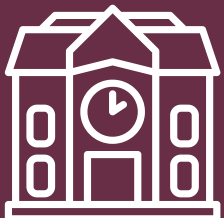
Restrooms will be monitored between and during classes by school staff. Face coverings must be worn during transitions and while in the restroom. Hands must be washed and/or hand sanitizer used when leaving or entering the classroom. An electronic sign out sheet for the restroom will be used in each classroom to document student restroom use during class.

RECESS / SOCIAL TIME

Opportunities to visit in small groups in a physically distanced environment will occur during meal times. Congregating in hallways or other common areas will be discouraged. Large assemblies and gatherings will not be scheduled during the school day until guidance from state authorities permit such assemblies/gatherings.

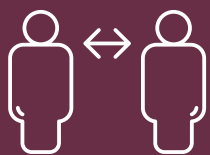


VISITORS AT SCHOOL



When possible, parents and visitors should call the school to make an appointment with school staff. Many issues may be resolved by utilizing telephone or online resources. Guests for lunch are not allowed.

PHYSICAL DISTANCING IN CLASSROOMS



Students will physically distance in classrooms as space allows. Non-essential furniture and equipment will be removed from classrooms. Face coverings will be worn when physical distancing is not possible.

BLENDED LEARNING

Teachers and students will utilize Canvas and face-to-face instruction. Because of the use and availability of digital technology, the blended learning option will allow for rapid transition to crisis/remote learning, if needed. In the event of school closure due to inclement weather or pandemic restrictions, students will transition to learning from home.



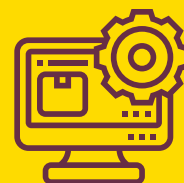
VIRTUAL LEARNING



Teachers and students will be expected to utilize Canvas if enrolled in the Lake Hamilton Virtual Academy. Students will have the flexibility for synchronous/asynchronous learning as LHVA teachers will have sections built in through the day for students to attend live or view later through recorded versions. Concurrent credit, AP, and/or elective courses may be taught by a third party provider.

LEARNING MANAGEMENT SYSTEM

Canvas and Virtual Arkansas.



PARENT RESOURCES



Parent and student videos will be available to provide information regarding what school will look like prior to the first day of school. Social emotional learning resources will be provided to parents by building counselors and school based mental health counselors to utilize at home. FAQ documents will be provided to parents prior to the first day of school on the school website.

OPEN HOUSE



Open house will be done virtually for incoming tenth, eleventh, and twelfth grade students. The emphasis on the virtual open house will be procedures, technology, and contingency plans for remote learning. The virtual open house video will be released by August 16 through social media and placed on the website.

STUDENT MOBILE DEVICES

A Chromebook and set of headphones will be issued to each student.



COMMUNICATION WITH TEACHERS



Teachers will communicate with parents through phone, email, and the messaging system through Canvas. Parents are encouraged to download the free Lake Hamilton School District App (search Lake Hamilton Wolves in the App Store or on Google Play). Informational videos for parents will be placed on the school website and social media pages.

MENTAL HEALTH COUNSELING

School counselors and school based mental health counselors will coordinate services based on student need as well as provide information and resources to students and parents on a regular basis. If needed, the district's school-based mental health provider will be contacted. The district continues to partner with four community mental health agencies.



DYSLEXIA INTERVENTION



Students who qualify for dyslexia services will continue to receive small group intervention. If on-site learning is transitioned to online learning only, students will work with the dyslexia interventionist via Google Meet.

SPECIAL EDUCATION SERVICES



IEP Implementation

Blended (on-site) Learning: IEPs will be implemented as written as long as on-site learning is available; if crisis learning is implemented, plans may need to be amended.

LH Virtual Academy: IEPs may be amended by committees to better meet the learning environment.

Speech, Occupational, and/or Physical Therapy

Blended (on-site) Learning: Due to the hands-on nature of therapy, our therapists will wear protective equipment.

LH Virtual Academy: Provided via teletherapy or provided on campus at a scheduled time.

Special Education: Inclusion Classes (formerly known as co-teaching)

Blended (on-site) Learning: Special education teacher assists students in the general education classroom.

LH Virtual Academy: Special education teacher will collaborate with the LH Virtual Academy teacher online.

Special Education: Resource Classes

Blended (on-site) Learning: Students attend small classes for literacy and/or math (40 - 79% of the school day).

LH Virtual Academy: Special education teacher will provide virtual instruction.

Special Education: Self-Contained Classes

Blended (on-site) Learning: Students attend separate classes for any academic subject (80% or more of the school day).

LH Virtual Academy: Special education teacher will provide virtual instruction. Parent-teacher consultation. Academic or functional help may be provided on campus at scheduled times.

STUDENT LOCKERS

Student lockers will not be used until further notice.



ATHLETICS



Athletic programs will follow directives and guidelines set in place by the Arkansas Activities Association, Arkansas Department of Health, and the Department of Elementary and Secondary Education.

BAND

The band programs will follow directives and guidelines set in place by the Arkansas Activities Association, Arkansas Department of Health, and the Department of Elementary and Secondary Education.



ENGLISH FOR SPEAKERS OF OTHER LANGUAGES (ESOL)



English learners will receive small group intervention or embedded support for language acquisition and sheltered instruction in their classrooms. If the school transitions to online learning only, students will work with the ESOL teacher and/or their classroom teacher(s) via Google Meet.

GIFTED EDUCATION

Students will be provided on-site GT opportunities. If necessary, virtual GT opportunities will be provided.



LHSD IS HERE FOR YOU

Now more than ever before, Lake Hamilton is here for you. The safety of our students and staff is our number one priority. Our goal will be to provide the safest experience possible. That includes a rich educational experience with opportunities for social interaction and extracurricular activities while adhering to guidelines provided by the Department of Elementary and Secondary Education and the Arkansas Department of Health. Please visit our website (lhwolves.net) for up to date information regarding the reopening plans for the 2020-21 school year. Scan the QR code to be taken to the "Lake Hamilton is Here" website . This website includes all things related to reopening school this fall.



One Pack, One Purpose, Our Students' Success!
#LHWOLFNACTION