

# LAKE HAMILTON ELEMENTARY SCHOOL

LAKE HAMILTON ELEMENTARY

*Ready for Learning*

July 29, 2020

# LAKE HAMILTON

## ELEMENTARY SCHOOL



---

### TABLE OF CONTENTS

**Page 1:** Arrival at School, Departure from School, Bus Requirements

**Page 2:** Student Health Screenings, Hydration, Face Coverings, Hand & Respiratory Hygiene, School Nurse Protocol

**Page 3:** Breakfast, Lunch, Restroom Breaks, Recess/Social Time, Visitors at School

**Page 4:** Physical Distancing in Classrooms, Blended Learning, Virtual Learning, Learning Management System, Parent Resources

**Page 5:** Open House, Student Mobile Devices, Communication with Teachers, Specialty Classes, Dyslexia Intervention

**Page 6:** Mental Health Counseling, Special Education Services

**Page 7:** Gifted Education, English for Speakers of Other Languages, Lake Hamilton is Here

---

**240 Wolf Street**  
**Pearcy, AR 71964**  
**501-767-8725**

# ARRIVAL AT SCHOOL



**Bus Arrival:** Students will report directly to classrooms when they arrive on campus by bus. Breakfast will be served in the classroom.



**Car Arrival:** Duty personnel will begin unloading car doors at 7:25 a.m. Students will report directly to classrooms when they arrive on campus. Breakfast will be served in the classroom. Parents will not be allowed to walk students to the building. All students will exit from a vehicle in the car rider line.

## DEPARTURE FROM SCHOOL

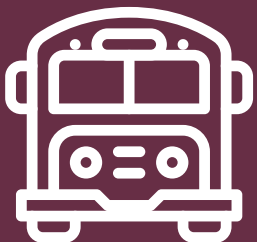
**Bus Departure:** Buses will begin dismissing at 3:05 p.m. Students will wait in their classrooms for each individual bus shift to dismiss.



**Car Departure:** Car riders will be dismissed at 2:50 p.m. All parents will drive through the car rider line. No parents will be allowed out of their vehicle. Students and staff will wear face coverings in the car rider dismissal area.



## BUS REQUIREMENTS



Face coverings will be required for bus drivers and all student passengers while riding on any school bus due to the inability to properly distance from others.

# STUDENT HEALTH SCREENINGS



Parents will screen students daily, including taking body temperature, before sending/bringing their children to school.

## HYDRATION

Water fountains will not be used; instead, bottle filling stations will be provided. Please send a water bottle to school with your child each day labeled with his/her name.



## FACE COVERINGS



Face coverings are **required** for students in grades K - 12 at times when social distancing of six feet or more cannot be assured. Face coverings may be removed during instructional time in classrooms and at other times when appropriate distancing among students and between students and teachers is achieved.

## HAND & RESPIRATORY HYGIENE

Staff will teach and reinforce proper hand-washing, coughing, and sneezing techniques. Hand sanitizer will be available in all classrooms, in the cafeteria, and all common areas.



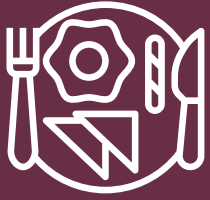
## SCHOOL NURSE PROTOCOL



The school nurse will be notified when a student is being sent to his/her office. The student will be checked for symptoms. If a student is showing symptoms, he/she will be isolated in a separate area until a parent/guardian arrives to pick him/her up.



# BREAKFAST



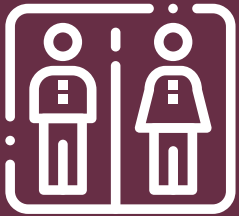
Breakfast will be served in the classroom.

# LUNCH

Lunch will be served in the cafeteria and in classrooms utilizing social distancing measures. The elementary school will rotate which classes are served in the cafeteria and which ones are served in the classroom weekly. No visitors are allowed during lunch.



# RESTROOM BREAKS



Each classroom has their own restroom. Students will use the restroom in their classroom. All restrooms will be monitored and cleaned frequently.

# RECESS / SOCIAL TIME

There will be no before school recess. Recess will be in groups of approximately 100 students. Equipment will be cleaned frequently.

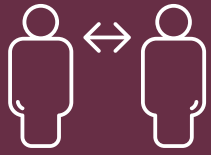


# VISITORS AT SCHOOL



When possible, parents and visitors should call the school to make an appointment with school staff. Many issues may be resolved by utilizing telephone or online resources. Guests for lunch are not allowed.

# PHYSICAL DISTANCING IN CLASSROOMS



Students will physically distance in classrooms as space allows. Non-essential furniture and equipment will be removed from classrooms. Desks will be spaced 6 feet apart when feasible and will face the same direction. No big groups will congregate on carpet areas.

## BLENDED LEARNING

Teachers will use Google Classroom supplemented by SeeSaw. This will be in the traditional, face-to-face setting. If the need arises, there will be a transition to online learning.



## VIRTUAL LEARNING



Students will be enrolled in the Lake Hamilton Virtual Academy. Teachers will use Google Classroom supplemented with SeeSaw for lessons. Google Meet will be used as the video conferencing platform between students and staff.

## LEARNING MANAGEMENT SYSTEM

Google Classroom supplemented with SeeSaw.



## PARENT RESOURCES



Informational videos will be provided, as well as a FAQ document. These items will be placed on the website. Technology training for parents will be offered.

# OPEN HOUSE



Open house will be done virtually for incoming second and third grade students. Teachers will contact parents to share information regarding the virtual open house. Tours of the building may be arranged by calling the elementary school office to set up an appointment.

## STUDENT MOBILE DEVICES

A Chromebook will be issued to each student.



## COMMUNICATION WITH TEACHERS



Teachers will communicate with parents through phone, text, email, and class Dojo. Information will be shared frequently on the Lake Hamilton Elementary School and Lake Hamilton School District social media pages. Parents are encouraged to download the free Lake Hamilton School District App (search Lake Hamilton Wolves in the App Store or on Google Play). Informational videos for parents will be placed on the school website and social media pages. Talking points will be used with ESOL families.

## SPECIALTY CLASSES

Specialty classes include art, music, physical education, computer lab, library, etc. Equipment and supplies will be sanitized between use. Transitions will be limited as much as possible.



## DYSLEXIA INTERVENTION



Students who qualify for dyslexia services will continue to receive small group intervention. If on-site learning is transitioned to online learning only, students will work with the dyslexia interventionist via Google Meet.

# MENTAL HEALTH COUNSELING

Allison Spraggins and Melissa Allen are the two counselors at the elementary school. They will be the point of contact for all mental health related concerns. If needed, the district's school-based mental health provider will be contacted. The district continues to partner with four community mental health agencies.



## SPECIAL EDUCATION SERVICES



### **IEP Implementation**

Blended (on-site) Learning: IEPs will be implemented as written as long as on-site learning is available; if crisis learning is implemented, plans may need to be amended.

LH Virtual Academy: IEPs may be amended by committees to better meet the learning environment.

### **Speech, Occupational, and/or Physical Therapy**

Blended (on-site) Learning: Due to the hands-on nature of therapy, our therapists will wear protective equipment.

LH Virtual Academy: Provided via teletherapy or provided on campus at a scheduled time.

### **Special Education: Inclusion Classes (formerly known as co-teaching)**

Blended (on-site) Learning: Special education teacher assists students in the general education classroom.

LH Virtual Academy: Special education teacher will collaborate with the LH Virtual Academy teacher online.

### **Special Education: Resource Classes**

Blended (on-site) Learning: Students attend small classes for literacy and/or math (40 - 79% of the school day).

LH Virtual Academy: Special education teacher will provide virtual instruction.

### **Special Education: Self-Contained Classes**

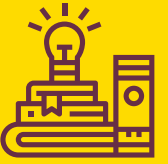
Blended (on-site) Learning: Students attend separate classes for any academic subject (80% or more of the school day).

LH Virtual Academy: Special education teacher will provide virtual instruction. Parent-teacher consultation. Academic or functional help may be provided on campus at scheduled times.



# GIFTED EDUCATION

The GT specialist will travel to classrooms weekly or provide virtual enrichment, if necessary.



# ENGLISH FOR SPEAKERS OF OTHER LANGUAGES (ESOL)



English learners will receive small group intervention for language acquisition and sheltered instruction in their classrooms. If the school transitions to online learning only, students will work with the ESOL teacher and/or their classroom teacher(s) via Google Meet.

# LHSD IS HERE FOR YOU

Now more than ever before, Lake Hamilton is here for you. The safety of our students and staff is our number one priority. Our goal will be to provide the safest experience possible. That includes a rich educational experience with opportunities for social interaction and extracurricular activities while adhering to guidelines provided by the Department of Elementary and Secondary Education and the Arkansas Department of Health. Please visit our website ([lhwolves.net](http://lhwolves.net)) for up to date information regarding the reopening plans for the 2020-21 school year. Scan the QR code to be taken to the "Lake Hamilton is Here" website . This website includes all things related to reopening school this fall.



*One Pack. One Purpose. Our Students' Success!*

**#LHWOLFNACTION**

**LAKE HAMILTON**  
ELEMENTARY SCHOOL

