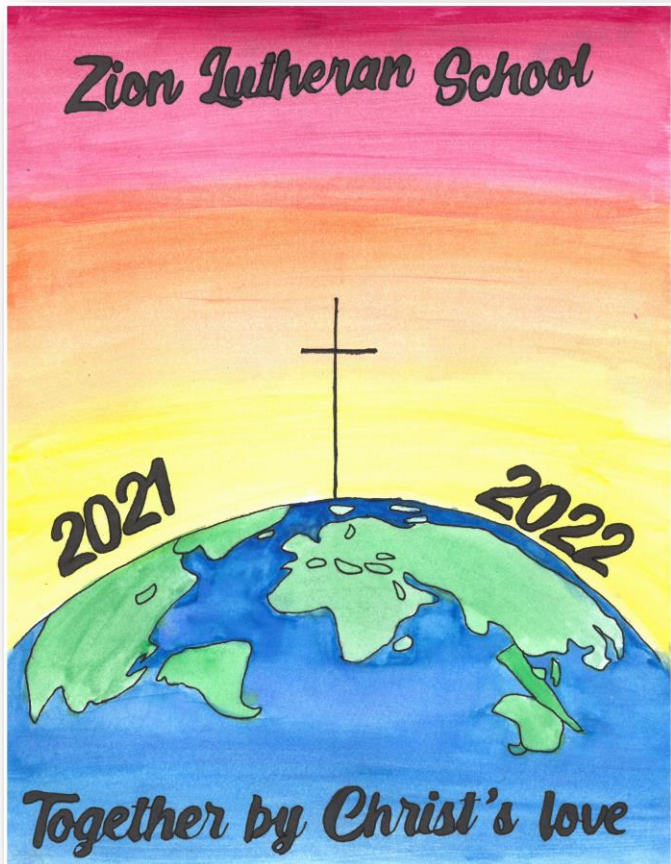


Zion Lutheran School

Christ-Centered, Classical Education



ACHIEVEMENT TEST RESULTS

2021-2022

A COMPARISON OF AVERAGES

ABOUT OUR TESTING

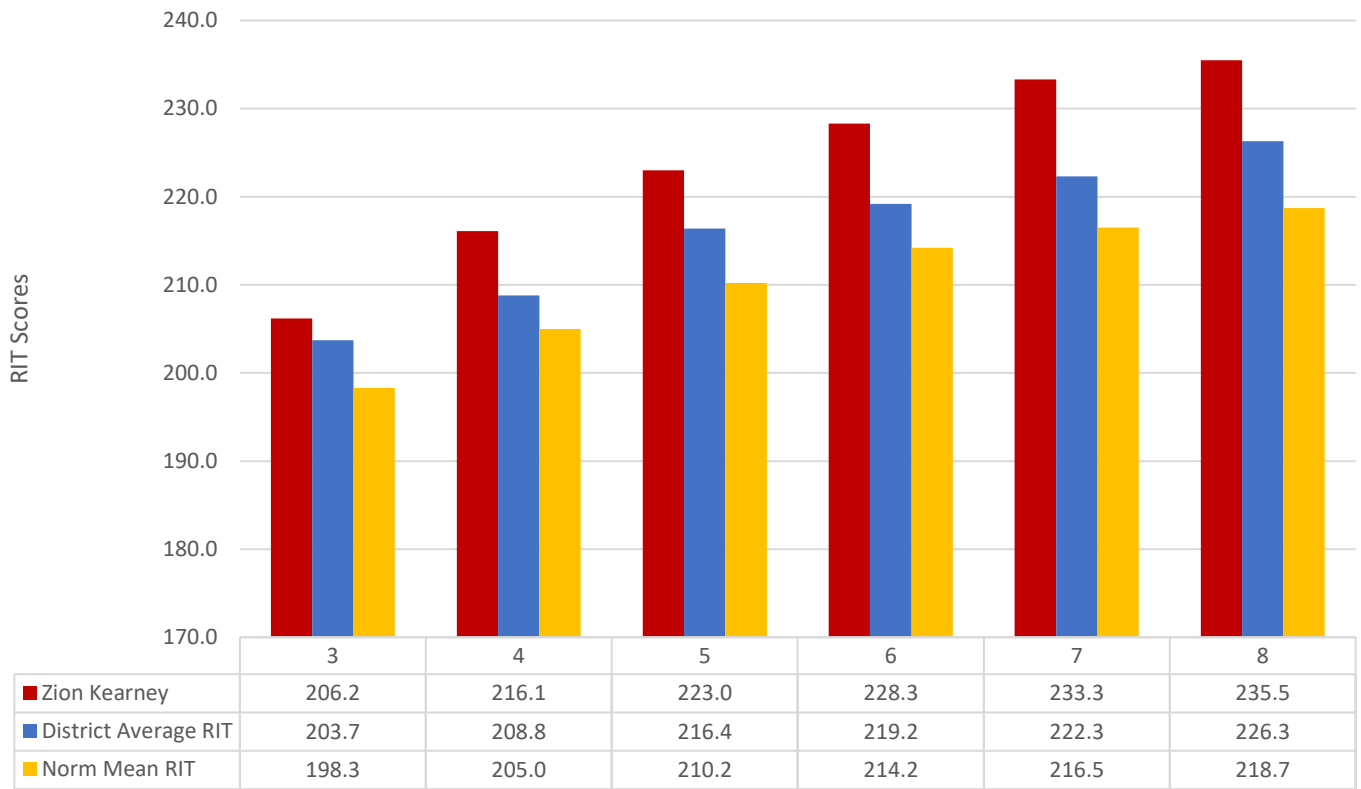
How does Zion Lutheran School compare to other schools academically? Zion uses the NWEA MAP assessment to gauge student learning. This test is given in fall, winter, and spring testing sessions and gives teachers, students, and families, immediate feedback on achievement. The MAP assessment has become the assessment of choice for the Lutheran schools of the Nebraska district and is also administered by Kearney Public Schools. This uniformity of testing allows us to better compare school achievement using classroom averages. It also provides an objective look at our academic prowess. This document will illustrate how Zion compares with other Nebraska Lutheran schools and students nationally.

Please note:

- * 1st/ 2nd graders are only assessed on math and reading.
- ** Due to inadequate sample size, eighth grade scores are not available.
- ** These scores represent a true average of high and low student scores; no scores are excluded. Soli Deo gloria! To God alone be the glory!

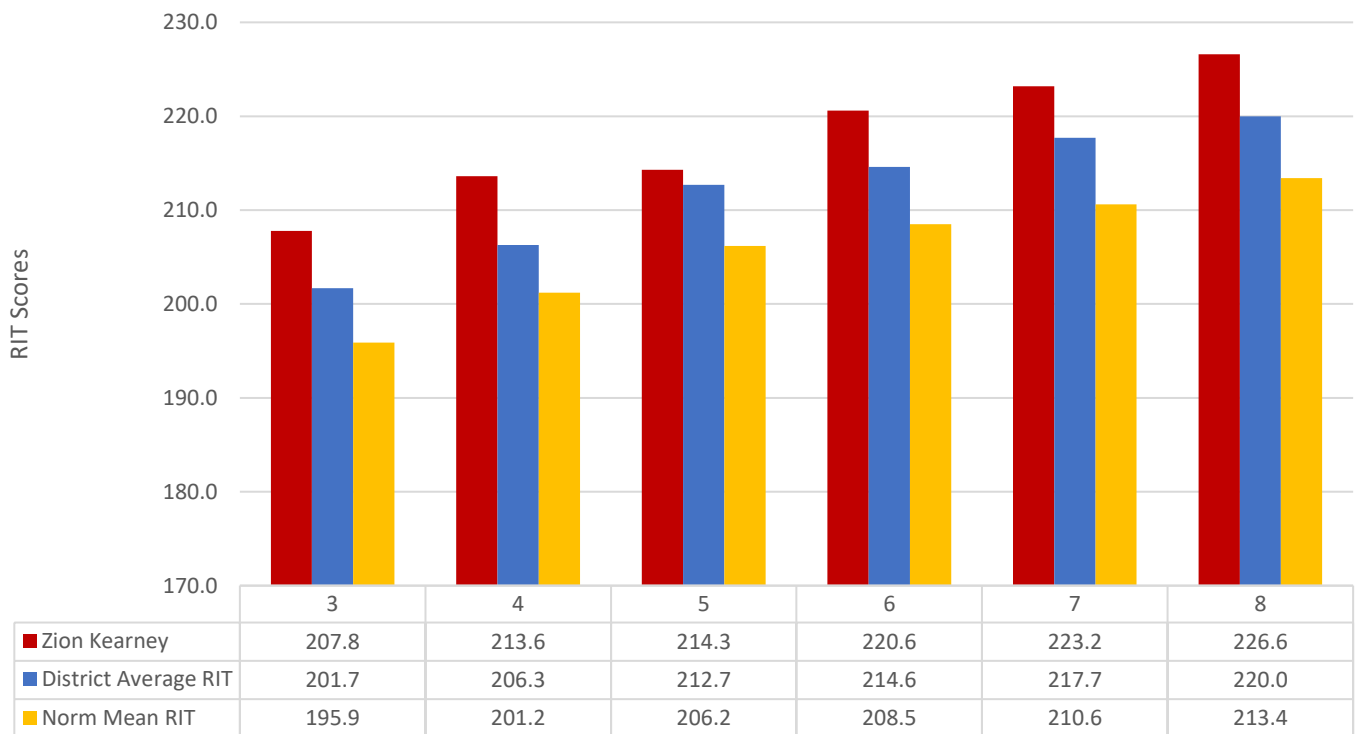
2020-2021 NWEA MAP Results: LANGUAGE ARTS

Zion Kearney vs. Nebraska Dist. vs. Nation

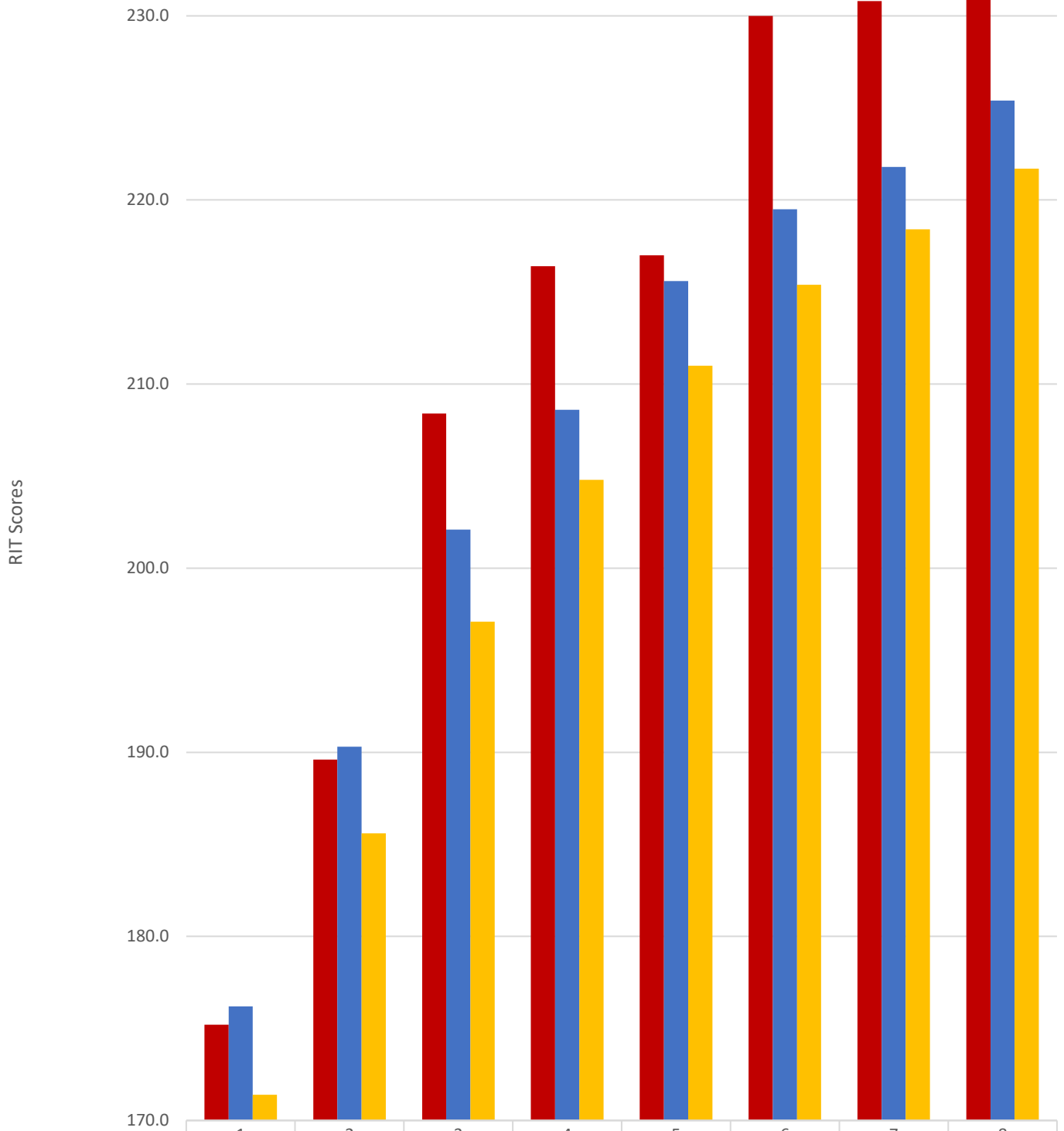


2021-2022 NWEA MAP Results: SCIENCE

Zion Kearney vs. Nebraska Dist. vs. Nation

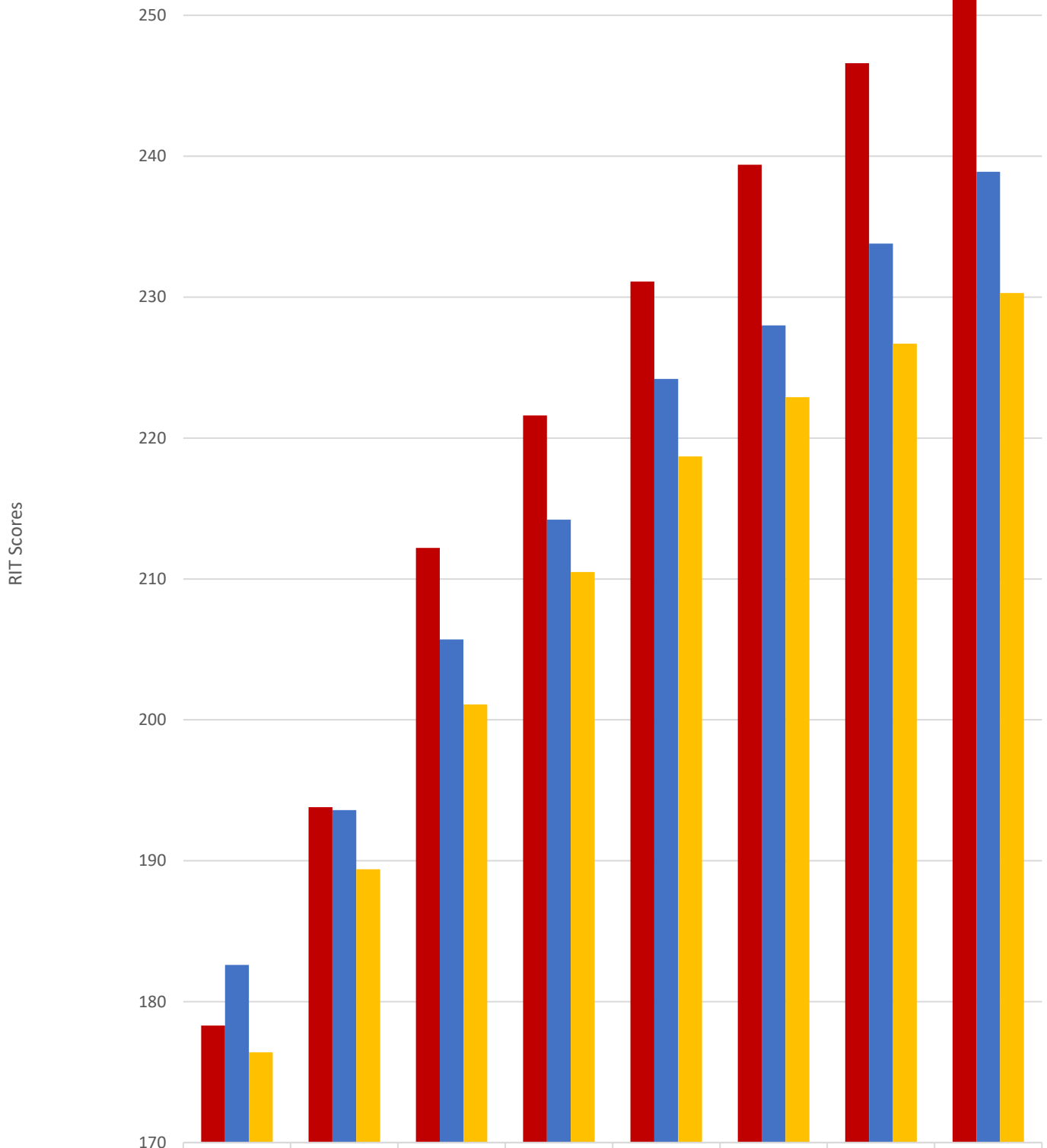


2021-2022 NWEA MAP Results: READING Zion Kearney vs. Nebraska Dist. vs. Nation



Zion Kearney	175.2	189.6	208.4	216.4	217.0	230.0	230.8	232.7
District Average RIT	176.2	190.3	202.1	208.6	215.6	219.5	221.8	225.4
Norm Mean RIT	171.4	185.6	197.1	204.8	211.0	215.4	218.4	221.7

2021-2022 NWEA MAP Results: MATH Zion Kearney vs. Nebraska Dist. vs. Nation



Zion Kearney	178.3	193.8	212.2	221.6	231.1	239.4	246.6	251.9
District Average RIT	182.6	193.6	205.7	214.2	224.2	228.0	233.8	238.9
Norm Mean RIT	176.4	189.4	201.1	210.5	218.7	222.9	226.7	230.3