

# ***Wabash County CUSD #348***

## **Soft Reopening Plan with Full Return Date**

**Introduction:** This guidance comes from recommendations given by the Center for Disease Control (CDC), Illinois Department of Public Health (IDPH), Wabash County Department of Health, Illinois State Board of Education (ISBE), and the Wabash County School Board. We appreciate the patience of our families during this uncertain time and are eagerly awaiting students on August 13. The goal of this plan is to provide for a safe learning environment for our students and staff as well as maintaining our commitment to serving the Wabash County community. *Revised Remote Learning Plans are forthcoming with guidance from the ISBE.*

### **I. Health/Wellness**

- A. Face masks (one will be provided by the district) will be required for entry into any building.
  1. Must fit snug around the nose and mouth.
- B. Less than 50 people are permitted in one space.
  1. If outside, groups of 50 may be 30 feet apart.
- C. People will social distance as much as possible keeping a 6 feet distance from one another.
- D. Symptom screening will be conducted for all students and visitors.
  1. Due to these unique circumstances, visitors are strongly discouraged from visiting the buildings.
  2. Self-certification is permitted for staff.
  3. IDPH mandates that children must stay at home or they will be sent home if they have or develop one or more of these symptoms:
    - a) Temperature at or above 100.4.
    - b) Cough.
    - c) Sore throat.
    - d) Nausea.
    - e) Vomiting.
    - f) Diarrhea.
    - g) Chills.
    - h) Muscle aches.
    - i) Headache.
    - j) Loss of taste or smell.
    - k) Shortness of breath.
    - l) Fatigue.
    - m) Congestion.
    - n) Runny nose.
  4. If a student has a preexisting condition that involves one of the symptoms, a medical note will be necessary for the school nurse.

5. No return to school until fever-free for 72 hours without medication.
  6. No return to school until 10 days after COVID symptoms first appeared.
  7. Self-quarantine for 14 days if close contact with a COVID positive person.
    - a) IDPH guidelines indicate that close contact with a COVID-19 person is **within 6 feet for more than 15 minutes.**
  8. Identified sick will be isolated to the containment area and escorted outside the building to be picked up by parent/guardian.
- E. Temperature checks will be conducted daily for staff and students upon entry.
- F. Physical contact of any kind is discouraged.
- G. Disinfection and cleaning will be continuous schoolwide.
- H. Staff and students will be trained on hygiene protocol and procedures.
- I. All athletics decisions will be in unison with IHSA and SIJHSAA recommendations.

## **II. Instruction**

### A. In-person Instruction

1. Students will be divided into two groups.
  - a) Group A (Maroon) will consist of students with last names beginning with A-J.
  - b) Group B (Gold) will consist of students with last names beginning with K-Z and all remote learners.
2. Rotation of in-person instruction.
  - a) Group A will attend in-person instruction on Tuesdays and Thursdays.
  - b) Group B will attend in-person instruction on Wednesdays and Fridays.
3. Attendance during Soft Reopening
  - a) August 13th: Group A will attend with a 12:20 dismissal.
  - b) August 14th: Group B will attend with a 12:20 dismissal.
  - c) August 18th & 20th: Group A will attend a full school day.
  - d) August 19th & 21st: Group B will attend a full school day.
  - e) August 24th: Full return to in-person instruction with regular dismissal.
4. Remote Learning
  - a) Days that students are not in in-person instruction will be in remote learning.
    - (1) Teachers will assign work to be completed on those days.

## B. Remote Learning Option

1. Students may opt for full remote learning but **must** comply with the following:
  - a) Access to reliable internet.
  - b) Parent/Guardian commitment to supervise and assist in the facilitation of learning in the home environment.
  - c) Must be periodically progress monitored by trained Wabash #348 personnel.
    - (1) This may entail in-person progress monitoring at the school.
2. Parents may opt to return to in-person instruction but **must** do the following:
  - a) Notification to the office of the principal.
    - (1) Although the student is registered, **there will be at least a one-day timeframe to prepare for the return.**
3. Parents are encouraged to work with the administration and teachers throughout this process.

## C. Technology

1. Grades 3-12 will have availability to take chrome books home.
2. Email teachers with device issues.
3. Individual wipes will be provided for the self-cleaning of devices.
4. If WiFi is unavailable at home, communicate with the school principal.

## D. Meetings

1. All IEP, 504, etc. meetings are encouraged to take place remotely.

## E. Classroom Space

1. Although student rotation will be limited, student movement will be allowed throughout the day.
2. Students will face one direction.
3. Student desks will be spread apart.
4. Doors and windows will be opened to increase air circulation where possible.
5. Lockers will not be shared.
6. Field trips will only take place virtually.
7. Hygiene protocol will be Taught/Modeled/Reinforced
  - a) Handwashing will take place for 20 seconds before and after eating, playing, coughing/sneezing, restroom use, etc.
  - b) Students are prohibited from sharing.
  - c) Avoid touching the face.
  - d) Students will be expected to clean previously used surfaces.

8. Social-emotional learning will be practiced to ease fear or anxiety in students.
9. Updated remote learning plans will be shared in the case of a resurgence or shut down.

#### F. Supplies

1. Children are encouraged to bring a clear, reusable water bottle to school properly labeled with his or her name.
2. Personal face masks may be worn in lieu of school-issued masks.
  - a) Face coverings must comply with the school dress code.
3. Toys are prohibited from entering schools.
4. No community supply stations will exist.
5. Personal hand sanitizer is permitted (+60% alcohol is recommended).
6. Students may keep kleenex and wipes in or at desks or backpacks.
7. Outside snacks and food for birthdays or events is prohibited.

### III. **Operations *Specific school scheduling, lunches, etc. will be forthcoming from building principals.***

#### A. Food Service

1. The schools will continue to provide breakfast and lunch.
2. Students are encouraged to purchase lunch at school.
3. No outside deliveries into buildings will be permitted.
4. Each building will look different during lunch and will be communicated by principals.

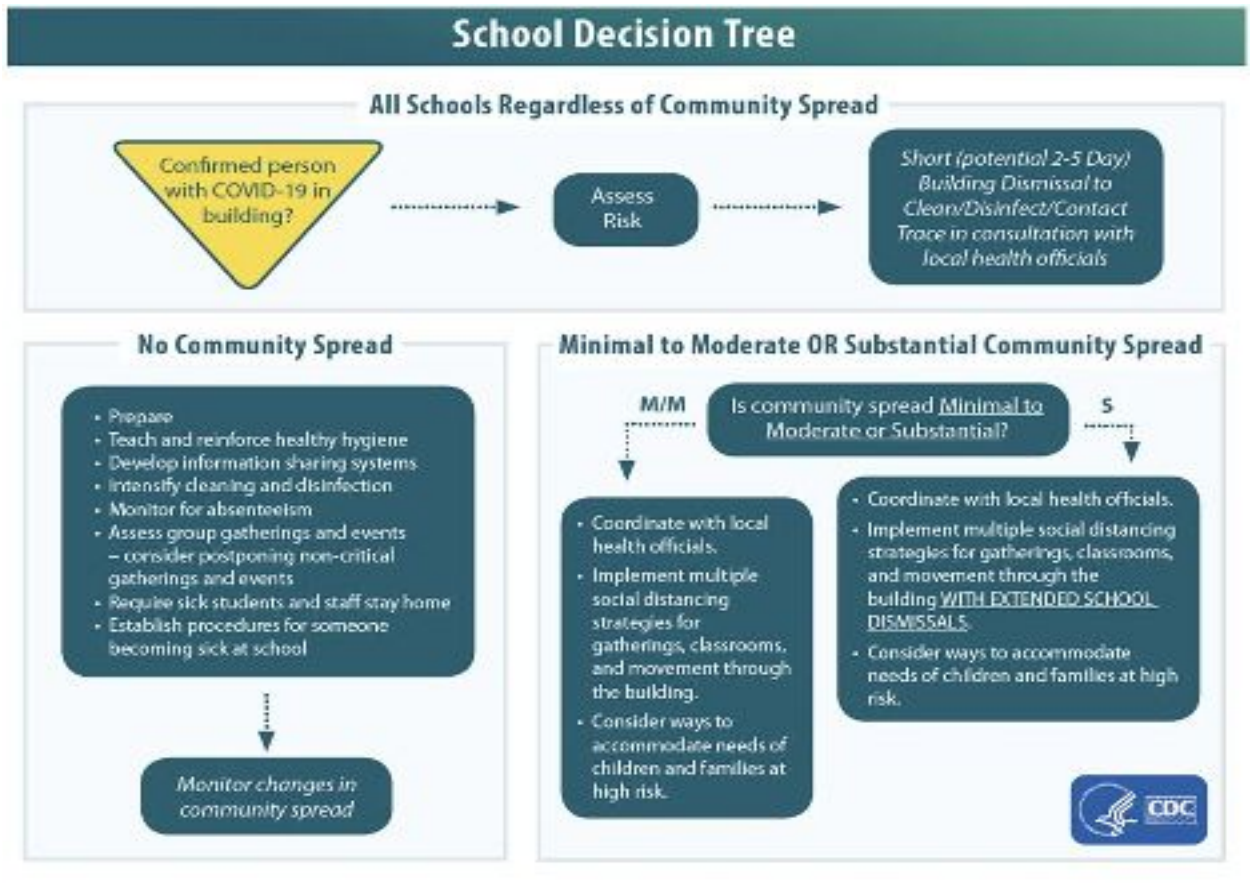
#### B. Transportation

1. The district will continue to provide bus transportation; however, parents may want to consider transporting their own children.
2. Children under the age of 14 must be accompanied to the bus stop.
3. Temperature checks will be performed prior to boarding the buses.
4. Masks must be worn to board buses.
5. Consumption of food and drink are prohibited on buses.
6. Seating will be assigned and limited to 50 passengers
7. Wabash CUSD #348 Transportation Department will self-certify staff and enforce disinfection protocol.

#### C. Facilities

1. All custodians will follow CDC guidelines in regards to using cleaning supplies.
2. Classrooms, common areas, restrooms, and touchpoint surfaces will be continuously cleaned.
3. Touchless hand sanitizer stations will be added throughout all campuses and into the classrooms.

4. Signs and visual aides will be posted throughout the schools enforcing hygiene protocol.
5. No loitering will be permitted on school grounds at any time.
6. If you transport your child, remain in your vehicle for arrival and dismissal.
7. In the event of a resurgence, we will follow below:



**IV. Building Level**

A. All buildings will have refined plans that are designed to better facilitate the remote learning process.

1. These plans will be posted on each school’s web page at [www.wabash348.com](http://www.wabash348.com) or on the school app Wabash#348,IL.

**V. Return to in-person instruction.**

- A. IDPH/ISBE and local health officials will give guidance on returning.
- B. If returning approved, the District will implement the appropriate plan.