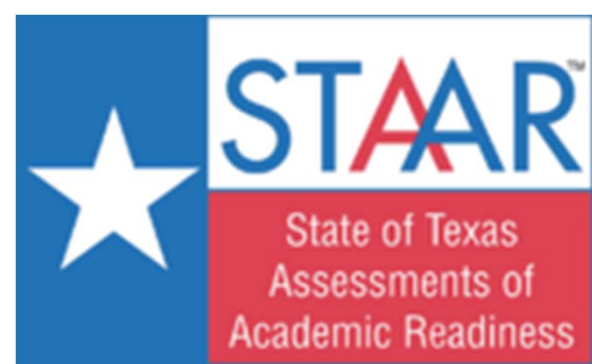


# Summary of 2017 3<sup>rd</sup> Grade Reading STAAR Data

Dr. Christy Hanson and Dr. James Cureton



Tyler ISD Goal #1: 85% of K-3 students will be reading at grade level RIT by spring 2021

Goal 1.1: 68% of students will meet standard on the 3<sup>rd</sup> grade reading test.

- Accountability currently only considers the percent of students **approaching** grade level (most of the data presented today).
- **Mastery** of a grade level is not considered in accountability for campuses or districts yet.\*\*\*

\*\*\*Mastery of grade level will be part of the 2018-2019 accountability ratings.

Goal 1.1: 68% of students will meet standard on the 3<sup>rd</sup> grade reading test.

**Percent of students APPROACHING grade level:**

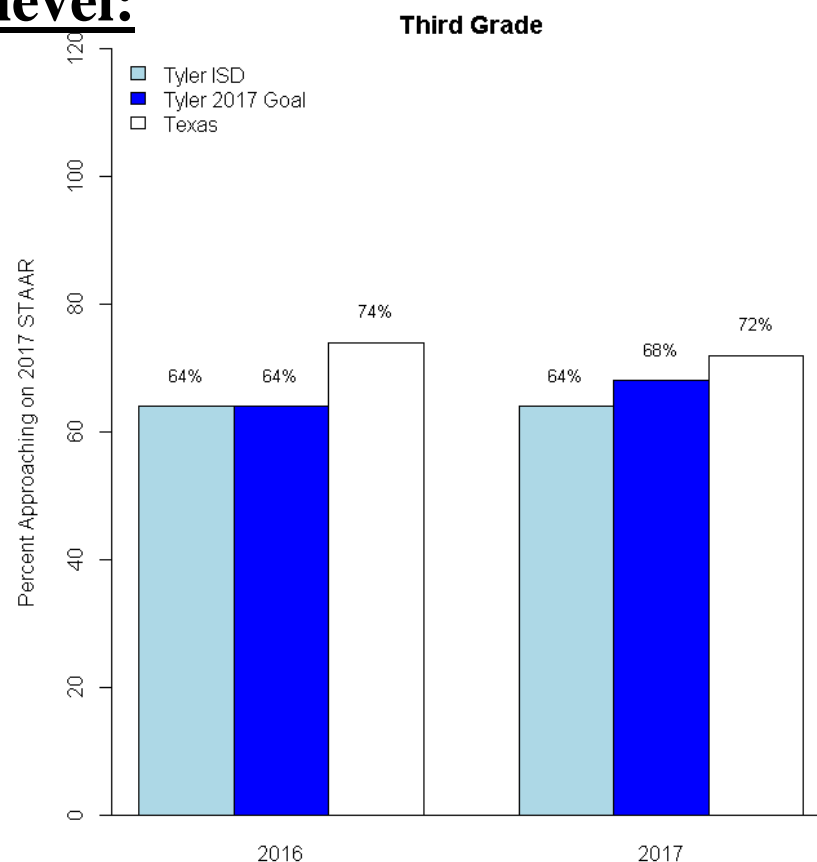
**1.1 - 3<sup>rd</sup> grade only:**

Spring 2016 **base**: 64% Approaching

Spring 2017 **average**: 64% Approaching

Spring 2017 **target**: 68% Approaching

We are short of our 2017 Goal 1.1 target with 64% of 3<sup>rd</sup> graders meeting the STAAR standard in reading.



Goal 1.1: 68% of students will meet standard on the 3<sup>rd</sup> grade reading test.

Percent of students **APPROACHING** grade level:

Campus Scores from 2016 to 2017	Percent Change	Number of Campuses
Declined	< -5%	5
No Change	-5% < & < 5%	5
Improved	< 5%	7

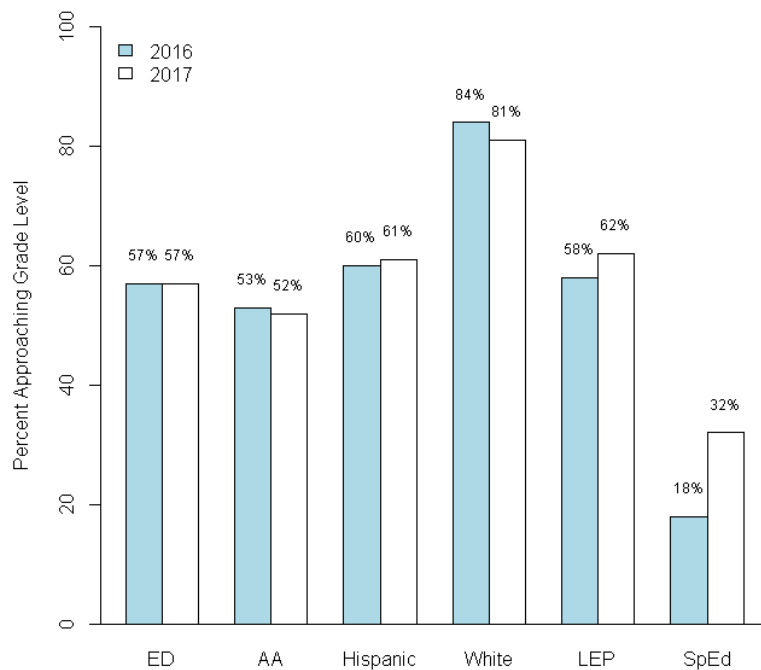
Schools that showed improvement in 2017

- \*Bonner Elementary School (+7%)
- \*Douglas Elementary School (+7%)
- \*Jones Elementary School (+14%)
- \*Ramey Elementary School (+26%)

- \*Clarkston Elementary School (+6%)
- \*Griffin Elementary School (+13%)
- \*Orr Elementary School (+14%)

Goal 1.1: 68% of students will meet standard on the 3<sup>rd</sup> grade reading test.

Percent of students **APPROACHING** grade level:

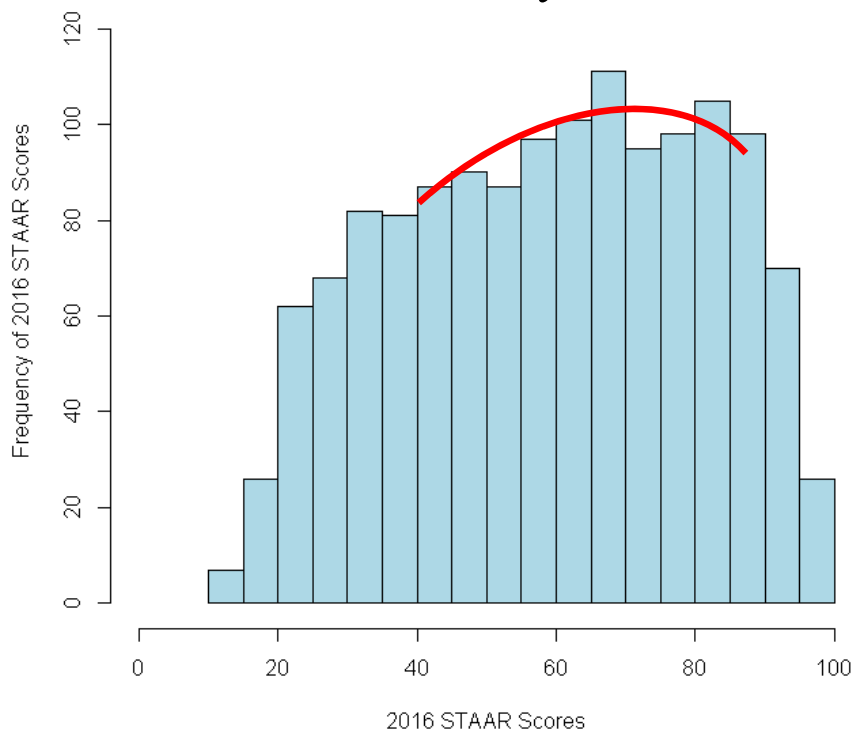


Notable subpopulation improvements:

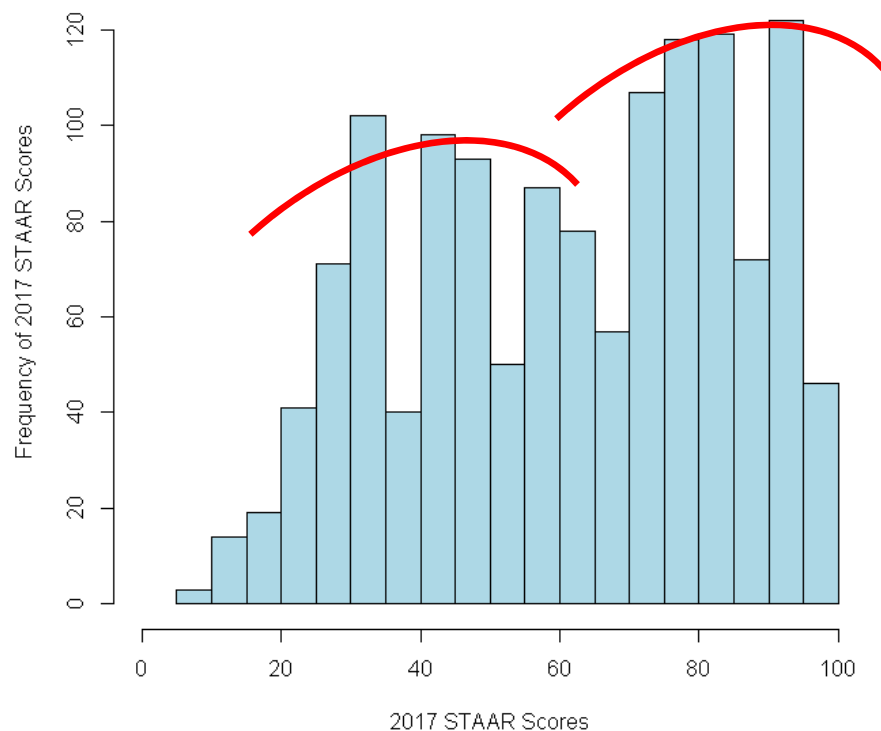
- The percent of LEP students approaching grade level increased by 4% in 2017
- The percent of Special Education students approaching grade level increased by **14%**!

# Goal 1.1: 68% of students will meet standard on the 3<sup>rd</sup> grade reading test.

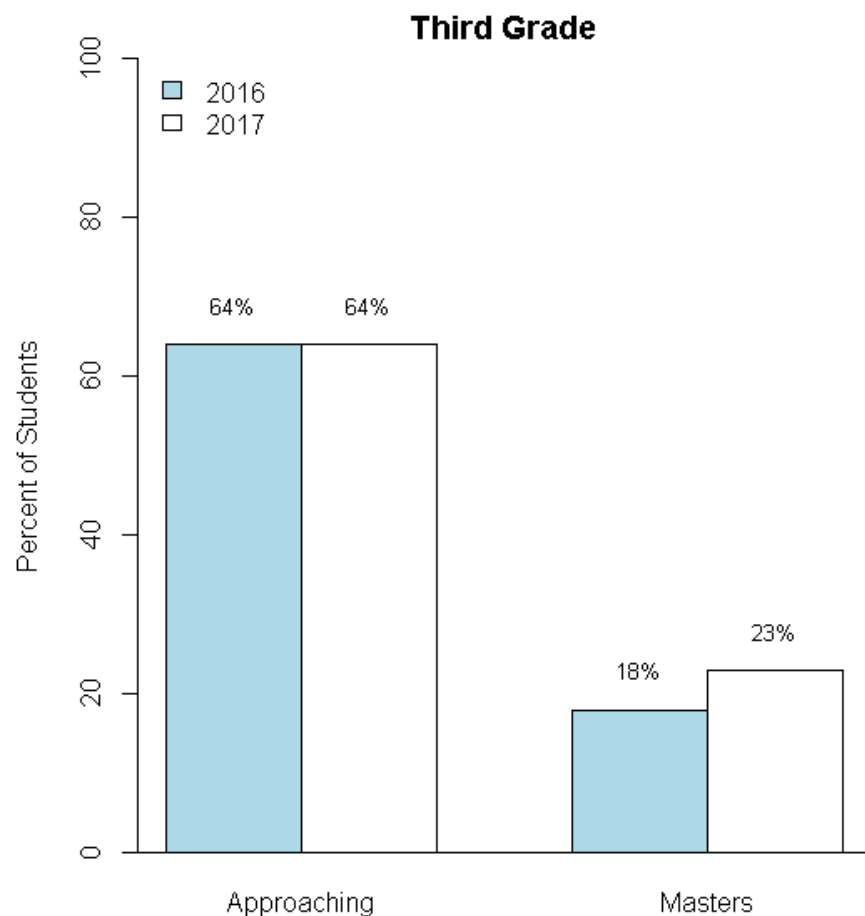
2016 STAAR Scores  
Approaching: 64%  
Mastery: 18%



2017 STAAR Scores  
Approaching: 64%  
Mastery: 23%



## Goal 1.1: 68% of students will meet standard on the 3<sup>rd</sup> grade reading test.



- We saw a 5% increase in mastery from last year
- This equates to 70 more students mastering 3<sup>rd</sup> grade reading than the year before!

Goal 1.1: 68% of students will meet standard on the 3<sup>rd</sup> grade reading test.

**Percent of students APPROACHING grade level:**

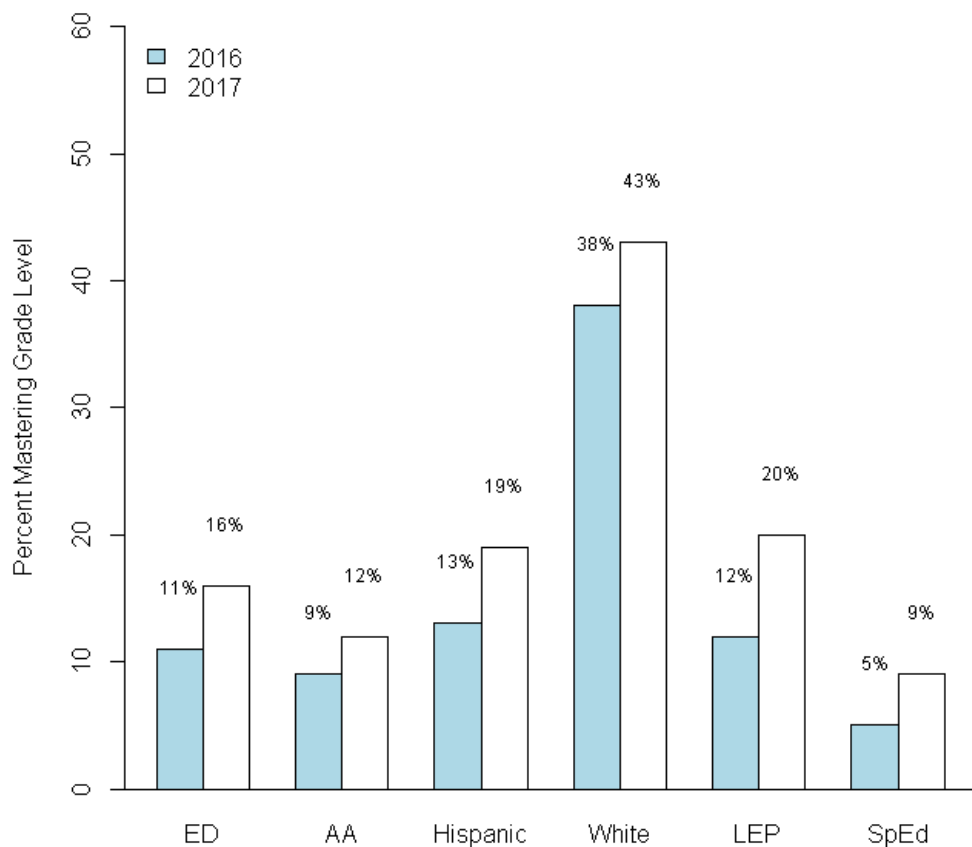
Campus Scores from 2016 to 2017	Percent Change	Number of Campuses
Declined	< -5%	5
No Change	-5% < & < 5%	5
Improved	< 5%	7

**Percent of students MASTERING grade level:**

Campus Scores from 2016 to 2017	Percent Change	Number of Campuses
Declined	< -5%	1
No Change	-5% < & < 5%	9
Improved	< 5%	7



# Goal 1.1: 68% of students will meet standard on the 3<sup>rd</sup> grade reading test.



## EVERY subpopulation improved MASTERY:

- Economically disadvantage (+5%)
- African American (3%)
- Hispanic (+6%)
- White (+5%)
- LEP (+8%)
- Special Education (+4%)

Goal 1.1: 68% of students will meet standard on the 3<sup>rd</sup> grade reading test.

TEK Progress	Percent Change	Number of TEKS
Declined	$\leq -5\%$	6
No Change	$-5\% < \& < 5\%$	3
Improved	$\leq 5\%$	7

**Biggest declines:**

- 5.A: Paraphrase the themes and supporting details of fables, legends, myths, or stories
- 13: Analyze, make inferences and draw conclusions about expository text and provide evidence from text to support their understanding

**Biggest improvements:**

- 5: Students analyze, make inferences, and draw conclusions about theme and genre in different cultural, historical, and contemporary contexts and provide evidence to support their understanding
- 10.A: Identify language that creates a graphic visual experience and appeals to the senses

## What does all of this mean for TISD?

- The percent of students approaching grade level **stayed the same** from 2016 to 2017
- The percent of students mastering grade level **increased** by 5% across the district.
- No subpopulation showed a significant decline in approaching, but every subpopulation increased mastery
- Focus needs to be on growing lower achieving students while continuing to challenge higher achieving students