



TYLER ISD

SUCCESSFUL STUDENT OUTCOMES

Bilingual/ESL Program Evaluation Report

Ana Segulin- Bilingual/ESL Director

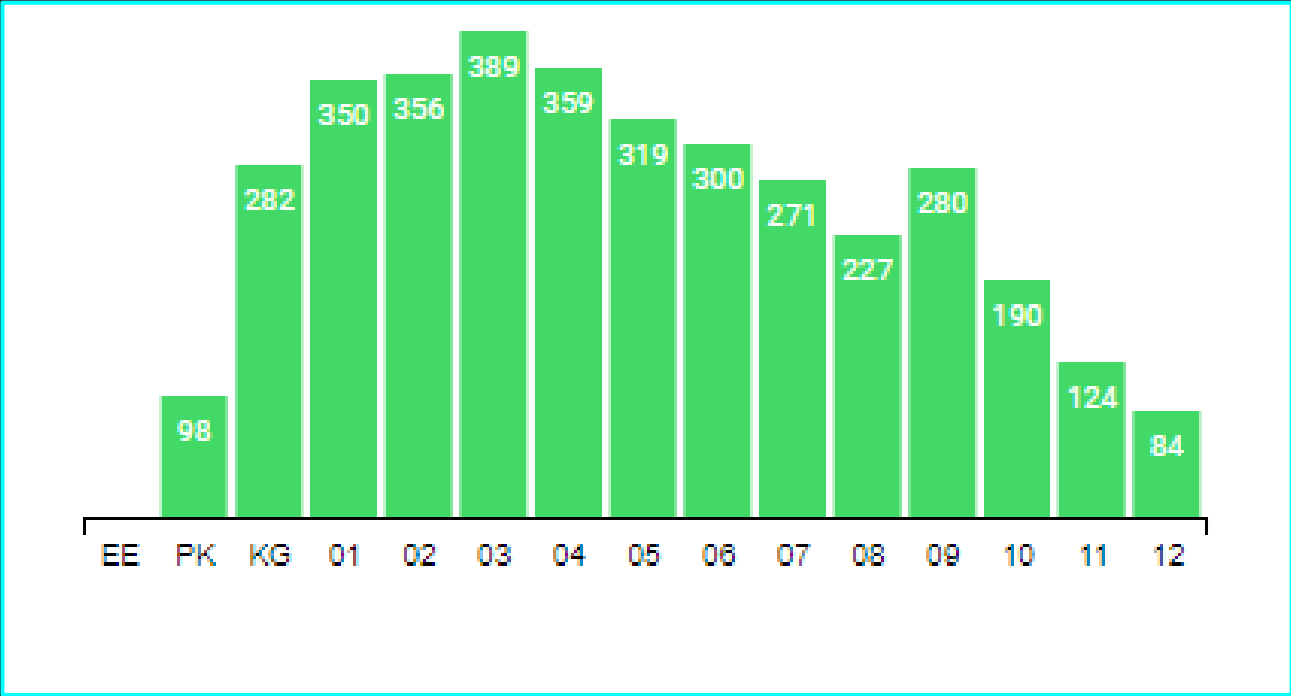
October 10th, 2019

District Demographics



3692 English Learners (ELs) out of 18328 students

ELs by grade level



Bilingual Exceptions/ESL Waivers

Filed for Waiver	2018-19	2019-20 Projected Waivers
Bilingual Teachers	2	15
ESL Teachers	4	16

PD Plan for Non ESL Certified Teachers

Professional Development

- SLOP training
- Bilingual/ESL Certification Test Prep

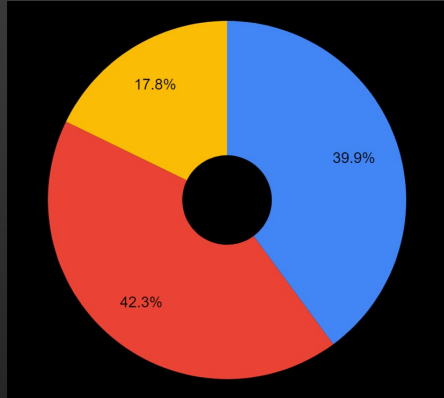
Ongoing on Campus

- PLC/ Planning Support
- Individual Coaching Cycles
- Tailor Made Training

Academic Progress of ELs

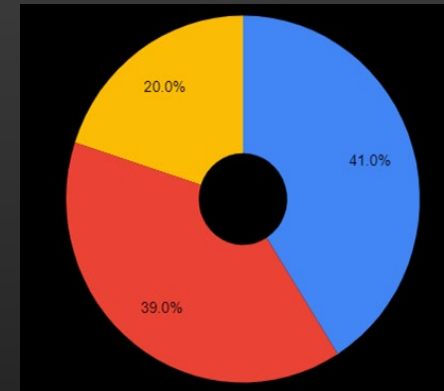
Tested in English

2018



Limited Progress	1358	39.9%
Expected Progress	1442	42.3%
Accelerated Progress	605	17.5%

2019

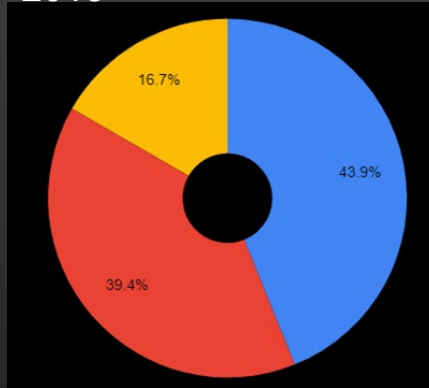


Limited Progress	3046	41%
Expected Progress	2897	39%
Accelerated Progress	1486	20%

Academic Progress of ELs

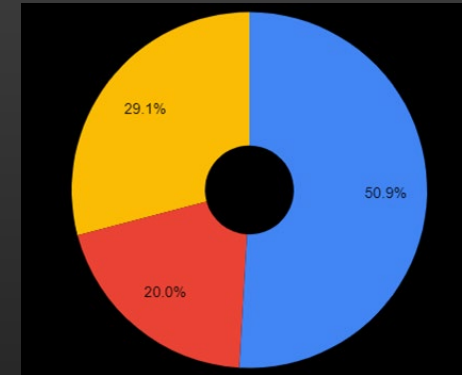
Tested in Spanish

2018



Limited Progress	29	43.9%
Expected Progress	26	39.4%
Accelerated Progress	11	16.7%

2019

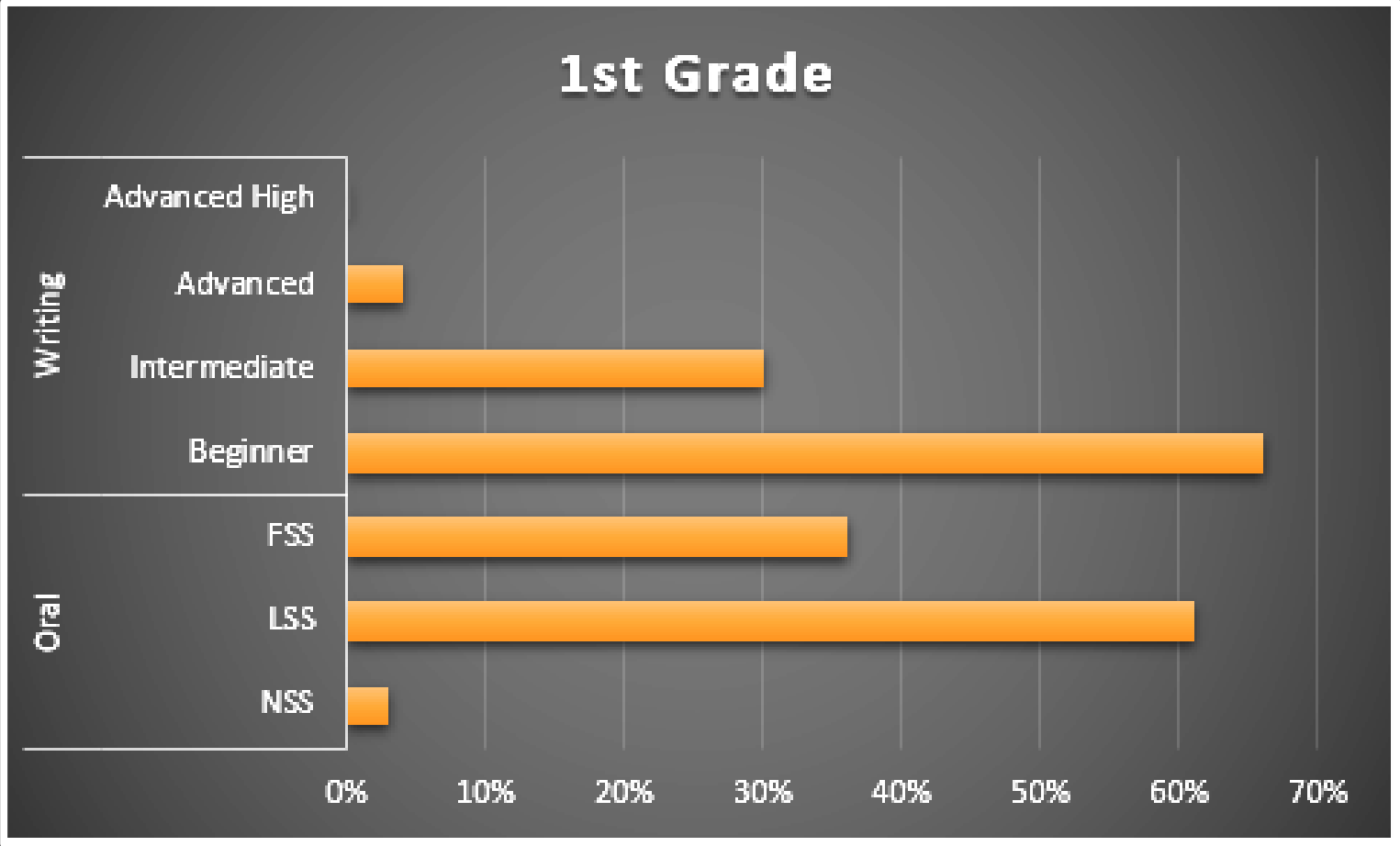


Limited Progress	27	50.9%
Expected Progress	11	20%
Accelerated Progress	16	29.1%

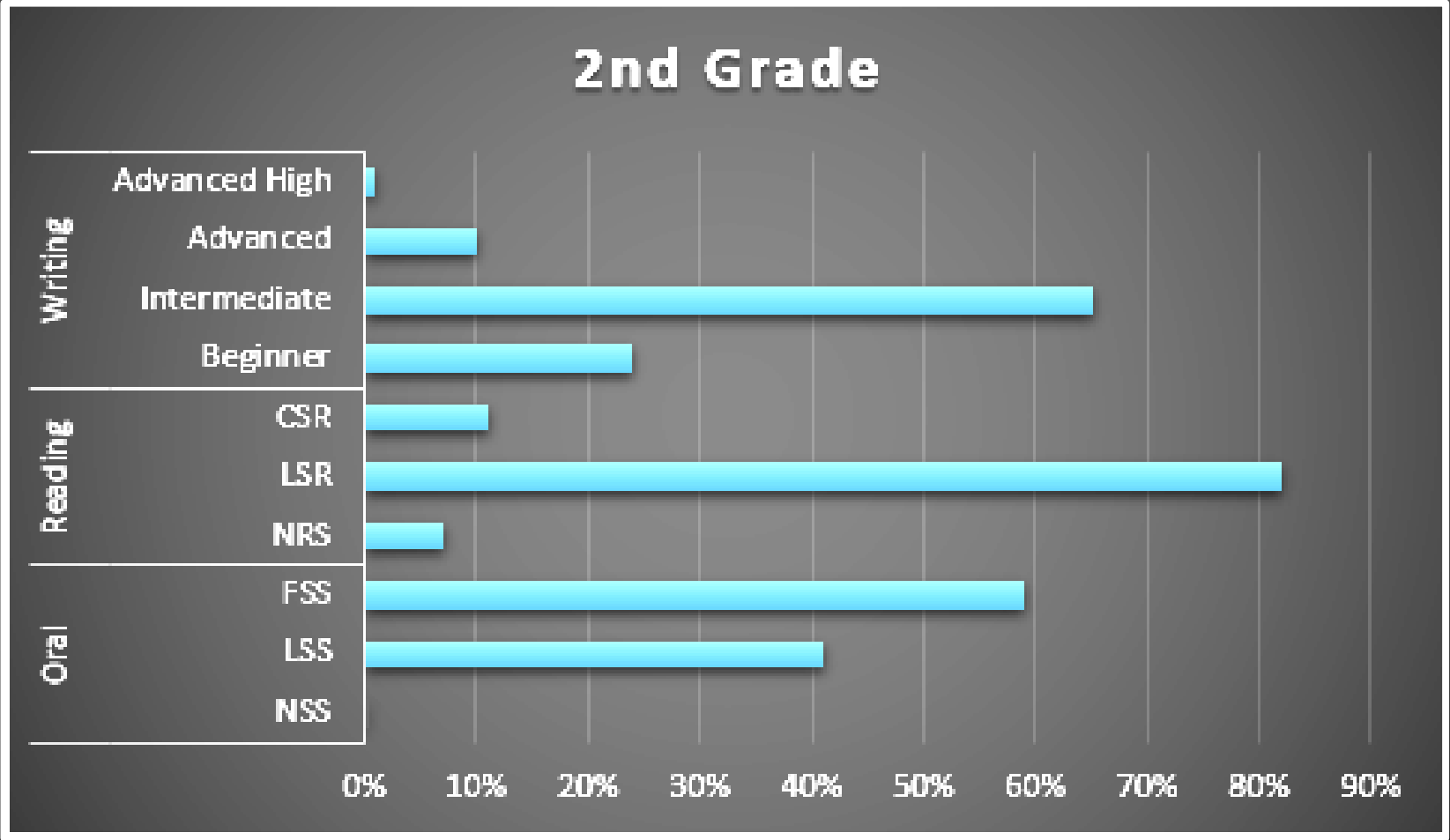
Dual Language Program Schools Scores

School	Score	Distinctions
Bell EL	89	5
Bonner EL	88	3
Birdwell EL	87	3
Dixie EL	85	4
Austin EL	66	

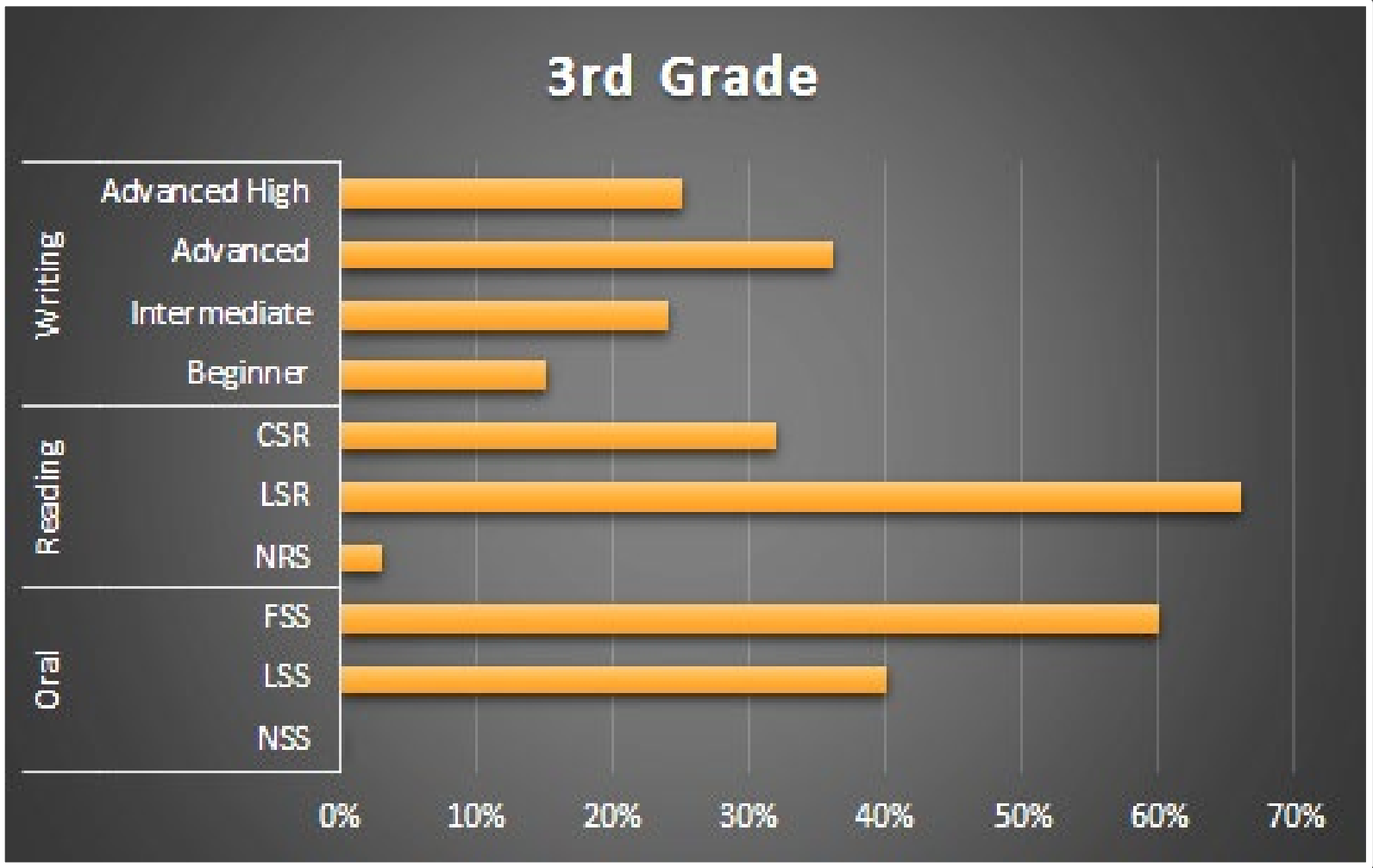
DL Spanish Language Proficiency



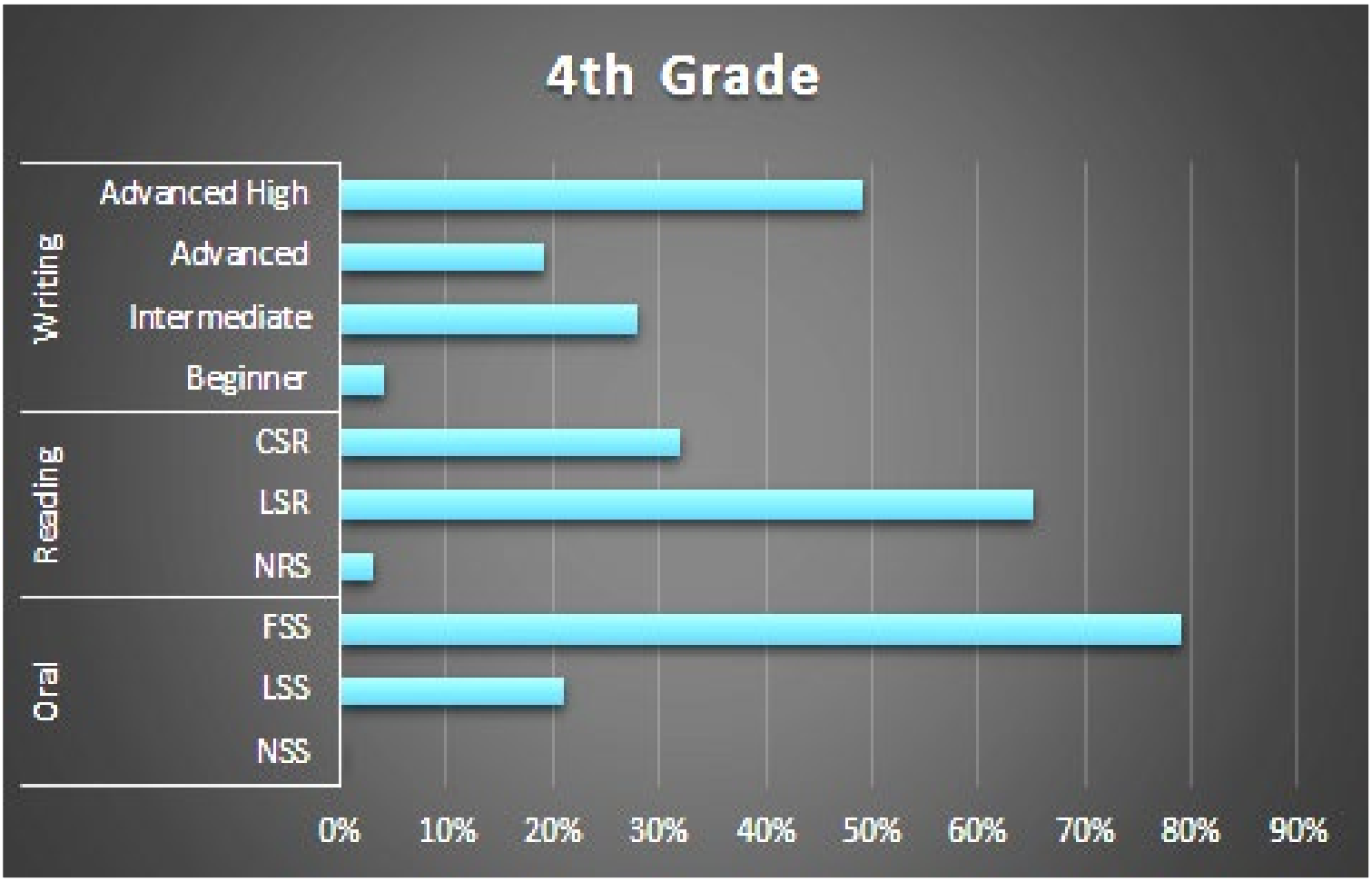
DL Spanish Language Proficiency



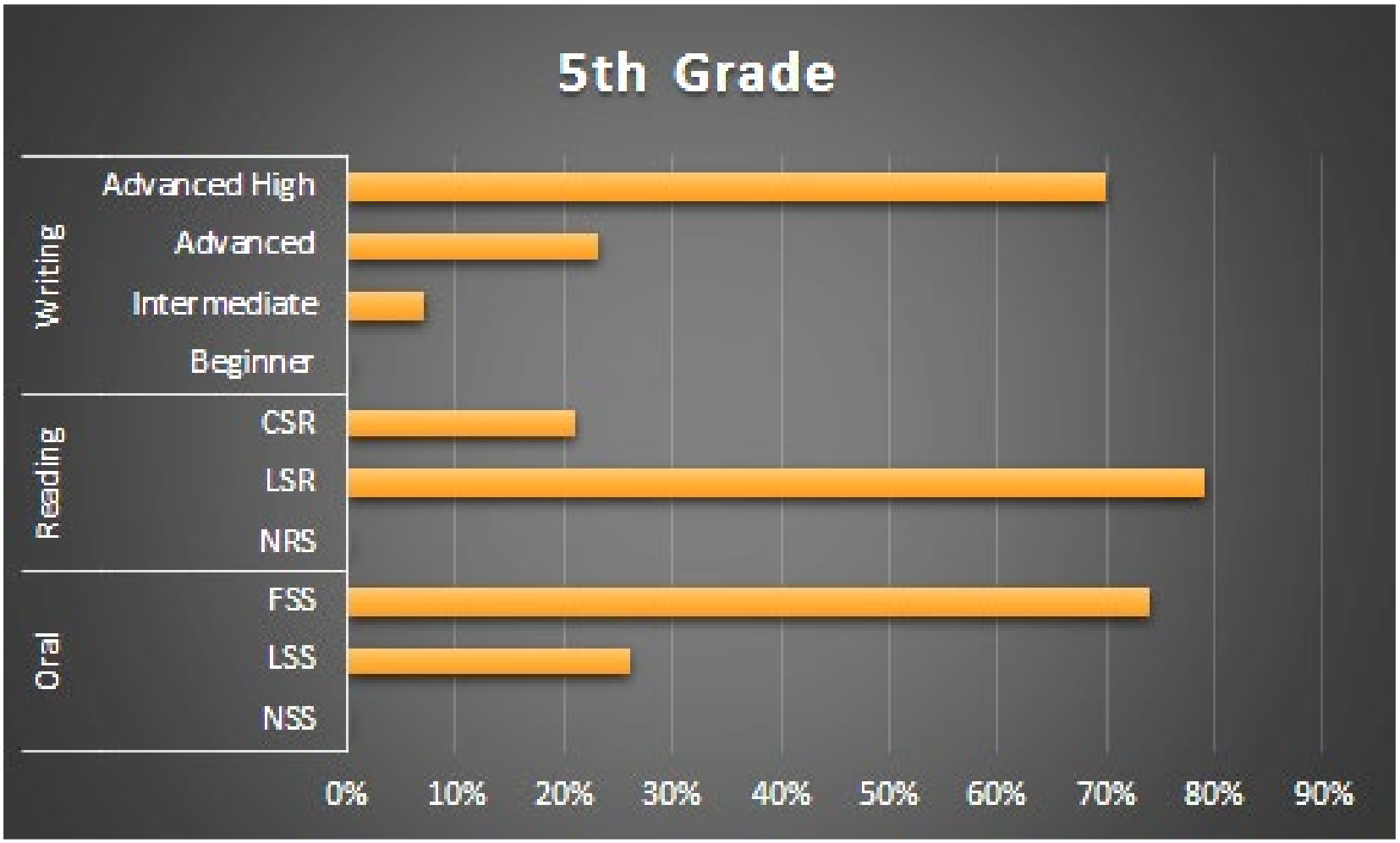
DL Spanish Language Proficiency



DL Spanish Language Proficiency



DL Spanish Language Proficiency



English Language Proficiency

TELPAS Target	Percentage of students who met Target
36%	30%

- 992 students out of 3283 students tested met progress
- Campuses met Progress: 11

Students Exited from the Program

49

Bilingual

34

ESL

11

Parent Denial

4

Accountability- PBMAS

BE/ESL Year after Exit

LEP Graduation Rate

BE STAAR 3-8 Passing Rate

LEP STAAR EOC Passing Rate

ESL STAAR 3-8 Passing Rate

LEP not Served in BE/ESL 3-8 Passing Rate

LEP Dropout Rate

Teachers Trained 2018-19 1777



The Bilingual/ESL Department



Instructional Support

**Lilly Calaway
Alejandra Carmona
Elizabeth Gomez**

Legal Support

**Analy Aparicio
Lesslie Duran
Adrianna Garcia
Jadwiga Walters**

**Director: Ana Segulin
Assistant: Maria Zuniga**