

Jacksonville North Pulaski School District

Titans Return to Learn!

SCHOOL RE-ENTRY PLAYBOOK 2020-21



Plans will be modified as public health guidelines are updated.



A Message from the Superintendent



District Families and Students,

Enclosed in this guide is information on new procedures and protocols for buildings, grounds and buses that have been implemented in our efforts to provide a safe learning environment for your scholars during these unprecedented times. We have also included information on:

- **Ways your family can help us to maintain healthy schools;**
- **When your student should stay home from school and when it may be safe for them to return; and**
- **How classroom setup and school procedures have changed.**

Our goal is to ensure that all parents, students, teachers and staff members feel safe and secure while navigating through the complexities of the "new normal."

There is no one-size fits all approach to reopening our eight school campuses. Decisions are being made daily about the upcoming school year. With direction from the Arkansas Governor's Office, Arkansas Department of Health and Arkansas Department of Education, we believe we are as prepared as we can be in providing meaningful learning opportunities for your scholar.

We hope your scholar is as excited as we are for the upcoming school year. As we prepare to navigate through uncharted waters, we are grateful for the trust our parents are placing in us. We are caring for your most precious possession and we do not take that lightly. We are TITANS and we will get through this TOGETHER!

Respectfully,

**Bryan Duffie, Ed.S.
Superintendent**



TITANS RETURN TO LEARN 2020-2021



WHAT FAMILIES CAN EXPECT WHEN SCHOOLS REOPEN

The safety and well-being of our scholars, staff and families is of utmost importance. When the 2020-2021 school year begins in Jacksonville-North Pulaski, on-campus school will look much different than previous years due to new health and safety measures. JNPSD is developing plans to reopen schools based on guidance from Governor Asa Hutchinson, Arkansas Department of Health and Arkansas Department of Education. District plans are subject to change as situations evolve over time.


In the upcoming school year, district leaders will focus on academic instruction to enhance student performance and address learning loss. At the same time, JNPSD will work to maintain access to extra-curricular activities that are so important to the physical, mental and social well-being of our scholars.

WHEN SCHOOLS RESUME IN THE FALL, THEY WILL LOOK DIFFERENT. HERE IS WHAT YOU CAN EXPECT:

Schools will reopen with a continuum of options that include on-campus and remote learning.

The following health and safety guidance has been recommended by the Arkansas Department of Health for the reopening of schools based on current information and will be updated as the situation changes.

Screening at Home

- 
- Parents are recommended to take their child's temperature each day before going to school. Anyone with a temperature of 100.4 F or higher should not go to a school site.
 - Students and adults should also screen themselves for respiratory symptoms such as cough and shortness of breath prior to coming to school each day. Students and adults experiencing those symptoms should not attend school.



Arriving at School

- Staff members will be wearing face coverings.
- Parents and visitors may have limited access to the school campus.
- It is likely that arrival and dismissal times may vary depending on grade level.

General Safety Precautions Throughout the Day



- The JNPSD Maintenance Department will follow all recommended practices given by the Arkansas Department of Health. The appropriate cleaning agents and other sanitizers will be used including hospital-grade disinfectants.
- Physical barriers may be installed where social distancing is not possible.
- All scholars and staff will be encouraged to wash/clean their hands regularly.
- Handwashing stations with soap and hand sanitizer will be made available in classrooms.
- Schools will limit sharing of supplies between students and disinfect between uses if sharing is unavoidable.

Other Safety Considerations



- All scholars will be screened each day before entering the building.
- Face masks will be worn by all JNP staff.
- Scholars in grades PreK-12 will be required to wear face masks to school each day.
- Scholars in grades K-12 will be required to wear face masks on the school bus.
- JNPSD will provide cloth masks for every scholar and staff member. Disposable masks will be offered as needed.
- Masks will be worn when physical distancing is not possible.

NOTE: If physical distancing can be achieved in certain areas at certain times, the face masks can be removed for a period of time.

ON CAMPUS AND IN THE CLASSROOM



Social distancing will help limit the spread of the virus. Schools will consider the following strategies to maintain smaller groups of students in shared spaces:

- Modify school schedules
- Limit visitors on campus
- Keep scholars in smaller groups
- Serve meals in small group settings
- When feasible, space desks further apart to ensure a minimum of 6 feet distance between students.
- Serve breakfast and/or lunch in the classroom
- Where possible, keep student cohorts from mixing.
- Stagger lunches, recesses and other transition times
- Do not host large gatherings such as assemblies and dances.
- When feasible, identify a sick room for students who are not feeling well to minimize contact with others until they are able to go home.



Quality Instruction & Commitment to Equity

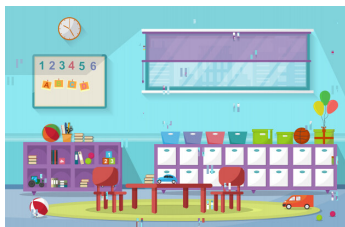
First Day of School

School is scheduled to begin on Monday, August 24, 2020 but no later than August 26th. This date will only change if the Arkansas Department of Health sends updated guidance.

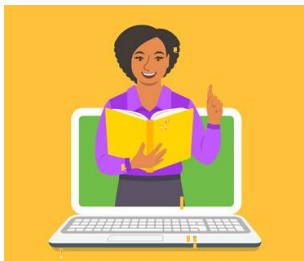


Parent Options

Surveys have been available for parents to complete regarding intent for the 2020-21 school year. The deadline to submit the survey is July 24, 2020. Parents are being offered the following options:



Blended Learning: This option will be the traditional school day with scholars and teachers on campus. All classes will be offered as normal. Technology will be utilized in certain ways to move to online or virtual learning if school closures or other situations warrant.

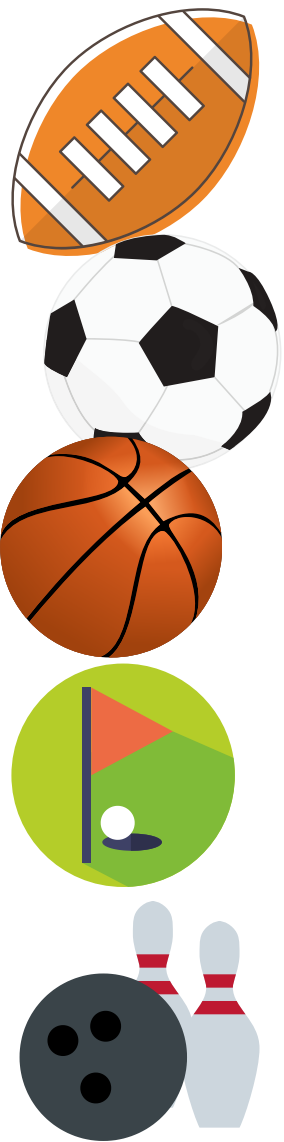


Virtual Learning (JNP Virtual Academy): This option is available for parents who want their children to learn remotely full-time using technology-based learning platforms. The scholars will NOT be on campus and classes will be facilitated by JNP teachers using Google Classroom, Edgenuity and other resources. Attendance will be taken and lessons will be graded as required. The virtual option is new learning -- just at home. The courses use the JNP curriculum aligned with state standards. We ask that parents choosing the virtual learning option for their children commit to this option for at least one semester. A scholar can be in the virtual academy and still participate in extracurricular activities as long as they can provide their own transportation.

Schools will work with students and families to ensure equity and access to quality instruction. Accommodations for students with disabilities, students with diverse learning needs, students who are medically vulnerable and English learners will be made as needed.



Sports and Extracurricular Activities



The Arkansas Activities Association is preparing to resume activities and athletics this fall/spring in accordance with the regular AAA calendar. These preparations are contingent upon compliance with all directives as issued by the Governor's Office and the Arkansas Department of Health.

If social distancing is feasible and modifications are made, the following are examples of sports that may be permitted;

- Golf
- Cross Country
- Baseball
- Softball
- Track and Field
- Bowling

The following sports involve close contact and are not recommended as of July 17, 2020. As the school year approaches, further guidance will likely be forthcoming from the Arkansas Department of Health and Arkansas Department of Education.

- Football
- Basketball
- Volleyball
- Soccer
- Cheerleading

As of July 17, 2020, the Arkansas School Band and Orchestra Association has not released re-entry guidelines regarding band and choir as extracurricular activities.

Field trips are not currently recommended. Virtual field trips will be considered when possible.

Assemblies, dances and rallies are not recommended at this time.

The Arkansas Department of Education, Arkansas Department of Health and Jacksonville North Pulaski School District are committed to ensuring the health and safety of all students. ADH will continue closely monitoring the rate of infection in the state. As public health guidelines change, JNPSD will adapt and modify plans. We will work together with our scholars and families to keep our children safe as we transition to this new approach of educating students.



JNPSD SCHOOL RE-ENTRY PLAYBOOK

Titans Return to Learn

Scholar, Staff and Visitor Screening

Temperature screenings will be performed on staff, scholars and visitors each day. ADH has recommended that parents screen their children before leaving home. Visitors will be limited to essential business only as approved by the administrator. The JNP screening tool will be used with the ADH standard questions.



COVID-19 Screening Questions



- Have you been in contact with anyone who has tested positive for COVID-19?
- Have you been out of the country in the last 14 days?
- Have you experienced any of the following symptoms: fever, sore throat, cough, shortness of breath?



Bus Transportation

Scholars in grades K-12 will be required to wear masks on the bus. Bus drivers will wear masks as well.

Breakfast and Lunch Service

Cafeterias will operate at 50% - 66% capacity (unless changed by ADH) as feasible to account for physical distancing during meal times. If lunch shifts cannot be staggered to accommodate the entire population using the cafeteria, then breakfast and lunch in the classroom or another location may be an option. The groups will rotate every other week to the cafeteria.

Daily Schedule for Scholars

The school day will operate as normal as possible with all classes implementing ADH and ADE guidance. All core subject classes and elective classes are planned to be offered. Elementary scholars will participate in activity classes and recess time. Secondary scholars will have access to activities and athletics. We are awaiting more ADH and ADE guidance concerning band and choir.

JNPSD SCHOOL RE-ENTRY PLAYBOOK

Titans Return to Learn

Alternative School Schedule

An alternative school schedule has been developed in case the Governor, ADH and ADE calls for modified attendance days due to health conditions. This schedule will have scholars on campus on alternating days with virtual classes on other days. This schedule will be used only if the state declares that this type of schedule is necessary as health conditions change in the state.

Special Needs Scholars

JNPSD will be prepared to accommodate scholars with special needs through a variety of means. The Special Education teachers and staff will use additional precautions when working with scholars. Therapy options will be offered for those who qualify. If parents have concerns for their children who may be high-risk, then the virtual learning option could be explored as a viable alternative.

Scholar, Staff or Visitor Testing Positive for the Virus

JNPSD will follow the protocol developed by ADH and staff will be in direct contact with ADH. The Arkansas Department of Health will advise if a brief school closure is needed based on the information available. Brief closures could happen and this will allow for additional cleaning and sanitizing of the school.

Campus Cleaning Protocols

The JNPSD Maintenance Department will follow all recommended practices given by ADH. The appropriate cleaning agents and other sanitizers will be used including hospital-grade disinfectants.

Arrival and Dismissal Times

The plan is to keep these times as normal as possible. Changes could occur based on how many families choose to use bus transportation services during this time. Times could vary in the future based on further guidance from the ADH and ADE.

Scholar Becomes Sick at School

Designated school staff will screen each scholar and perform temperature checks using the ADH protocol. Scholars will be sent home if the temperature is above the allowed limit in ADH guidance. (100.4 F or higher). A designated area will be used to isolate any scholar who becomes sick. The scholar will need to be fever-free for 48 hours prior to returning to school. The school staff will perform an additional screening at that time.



Frequently Asked Questions



What is the first day of school for students?

School is scheduled to begin on Monday, August 24, 2020 but no later than August 26th. This date could change depending on guidance from the Arkansas Department of Health and Arkansas Department of Education.

What will Open Houses look like in August?

The format for Open Houses and back-to-school events will depend on directives from ADH and ADE. We will share information as it becomes available.

Will the school provide scholars with a computer or internet device?

Yes, JNP students have access to Chromebooks as part of the 1:1 program. Chromebooks will be loaned to scholars (who request them) for virtual learning.

How will children socially distance in their classrooms?

In accordance with ADH directives, every effort will be made to limit close contact between students. Class arrangements will be used to maximize spacing between students and teachers to the extent possible. (minimize transitions, change lunch schedules, teachers may move to students, etc.)

Can I walk my child into the school?

No. Visits to the school will be limited to essential activity.

Can I visit the school, classroom or eat lunch with my student? Will parents and visitors be allowed in the buildings?

No. Visits to the school will be limited to essential activity.

Will bus transportation be provided?

Yes, bus transportation will be provided for all JNP scholars. However, if virtual students wish to participate in extra-curricular activities (athletics, band, etc) the parent will have to provide transportation to those activities.

Will buses make more trips to reduce the number of students on the bus?

No, not at this time.

Will class sizes be reduced?

No, not at this time.



Frequently Asked Questions



How do you intend to provide a safe, sanitized environment?

The janitorial staff will use CDC guidance on cleaning and comply with the Arkansas Department of Health sanitation and safety directives.

What happens when a classmate/teacher tests positive for COVID-19?

The ADH controls the procedures to be followed once a teacher or student tests positive. JNPSD schools will follow the guidance and direction provided to us by the ADH.

How will parents be notified of positive tests in school and possible exposure?

Letters will be sent home to all individuals who were possibly exposed. Phone calls will also be made to parents.

Will temperatures be taken regularly?

Temperatures will be taken before a student or staff member enters the building.

Can students attend virtual and blended instruction from one week to another?

No, scholars will not be allowed to switch from virtual to blended learning each week.

Is Pre-K offered virtually?

No. Pre-K will be on-site only.

Will elementary students have Art, Music and P.E.? (virtual)

Virtual students will have activities with videos in Google Classroom for art, music, library and p.e.

Will AP courses be offered virtually?

Yes, online GT students will receive GT support.

Will my child receive therapy services in a virtual classroom?

Speech, physical therapy, occupational therapy and mental health services will be offered through teletherapy with parent consent. Dyslexia services will be offered through live sessions such as Zoom and/or Google Classroom.



Frequently Asked Questions



What is virtual school?

The Jacksonville North Pulaski virtual school option keeps scholars enrolled in JNPSD and activities are supervised by JNP teachers.

What is homeschooling?

Homeschooling is an option where families take full responsibility for the education of their children and the children are not enrolled in JNPSD.

What is the Titan Homeschool Academy?

JNPSD does offer the Titan Homeschool Academy for families who want their children to remain homeschooled with curriculum content provided by JNPSD using an online service provider. The child would be enrolled in JNPSD for courses taken through the content provider but the child would remain as a homeschool scholar. Families interested in this option should contact Amy Arnone at aarnone@jnpsd.org or 501-241-2080.

How will 504 students receive services? (virtual)

Students will continue to receive accommodations included in their 504 plans. Teachers and paraprofessionals will provide instruction through Google Classroom and other resources.

How will special education students receive services? (virtual)

Students will continue to receive the minutes included in their IEP. Teachers and paraprofessionals will provide instruction through Google Classroom and other resources.

Will face coverings or masks be mandatory?

In compliance with the latest CDC recommendations, face masks will be required for scholars in grades PreK-12 when social distancing is not feasible.

Will elementary students have recess?

Yes, but recess may not look the same. We will follow current Arkansas Department of Health guidelines.

Can students bring their lunch to school?

Yes



The CDC recommends washing hands with soap and water whenever possible. If soap and water are not available, using a hand sanitizer with at least 60% alcohol can help you avoid getting sick and spreading germs to others.

WHEN TO USE HAND SANITIZER:

- After using the Timeclock
- After using high touch surfaces: door handles, buttons, shared office equipment, etc.
- After removing gloves
- Before and after touching your face
- When a sink with running water and soap is unavailable.

WHEN TO WASH WITH SOAP AND WATER:

- When preparing food/before eating
- After blowing your nose, coughing, sneezing
- After handling trash
- Anytime your hands are visibly dirty or greasy

HOW TO SANITIZE YOUR HANDS

STEP ONE: APPLY

Apply enough hand sanitizer to your palm to cover all surfaces of your hands.



STEP TWO: RUB

Vigorously rub hands together. Ensure palms, back of hands, between fingers and wrists are saturated with sanitizer. Rub until dry.





HOW TO WEAR A FACE COVERING

WHY YOU SHOULD WEAR A MASK

Face masks block the release of virus-filled droplets into the air when you cough or sneeze. This helps slow the spread of COVID-19. While a cloth mask won't totally block the coronavirus, it is an added layer of protection, when used with regular hand washing and social distancing.

ARE FACE MASKS MANDATORY?

All staff, students and visitors are strongly recommended to wear a face covering at all times on our campuses, practice social distancing of 6 feet and to practice good hand hygiene.

WHEN IS IT OKAY FOR ME TO NOT WEAR A MASK?

It is appropriate for a staff member to not wear a mask when working alone in a private office or when eating your lunch in a socially distanced fashion.

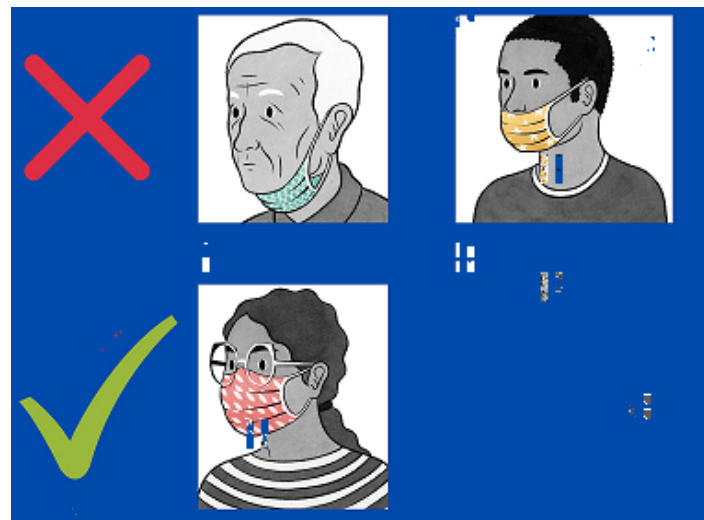
STEP ONE:

Start with clean hands when putting on your mask. Face coverings should be clean, dry and in good condition. Disposable masks are intended for one time use, their protective abilities diminish with each use.

STEP TWO:

Adjust your face covering to fully cover your mouth and nose. Your face covering should rest on the bridge of your nose and extend to the bottom of your chin.

WRONG VS. RIGHT:



STEP THREE:

Clean your hands before you remove your mask. Discard your mask in the waste bin, if disposable. If reusable, it is recommended to wash your mask in hot water nightly.



PROPER HAND HYGIENE

The CDC recommends washing hands with soap and water whenever possible because hand washing reduces the amounts of all types of germs and chemicals on hands.

WHEN TO WASH WITH SOAP AND WATER:

- When preparing food/before eating
- After blowing your nose, coughing, sneezing
- After handling trash
- Anytime your hands are visibly dirty or greasy

HOW TO WASH YOUR HANDS

STEP ONE: APPLY

Wet hands and apply enough soap to your palm to cover all surfaces of your hands.



STEP TWO: SCRUB

Lather your hands by rubbing them together with the soap for at least 20 seconds. Scrub the back of your hands, between your fingers and under your nails.



STEP THREE: RINSE

Rinse your hands well under clean, running water. Leave the water running.



STEP FOUR: DRY

Using a paper towel, dry your hands. Then, with the same paper towel, turn off the water faucet. Discard in trash.



JNP SCHOOLS



Homer Adkins Pre-K Center
500 Cloverdale Road
Jacksonville, AR 72076
501-982-3117

Pinewood Elementary School
1919 Northeastern Avenue
Jacksonville, AR 72076
501-982-7571

Bayou Meto Elementary School
26405 Highway 107
Jacksonville, AR 72076
501-988-4131

Warren Dupree Elementary School
700 Gregory Street
Jacksonville, AR 72076
501-982-9541

Bobby G. Lester Elementary School
601 Harris Road
Jacksonville, AR 72076
501-982-7456

Jacksonville Middle School
718 Harris Road
Jacksonville, AR 72076
501-982-9436

Murrell Taylor Elementary School
1401 Murrell Taylor Drive
Jacksonville, AR 72076
501-985-1581

Jacksonville High School
1301 W. Main Street
Jacksonville, AR 72076
501-982-2128

JNPSD Central Office
1414 W. Main Street
Jacksonville, AR 72076
501-241-2080