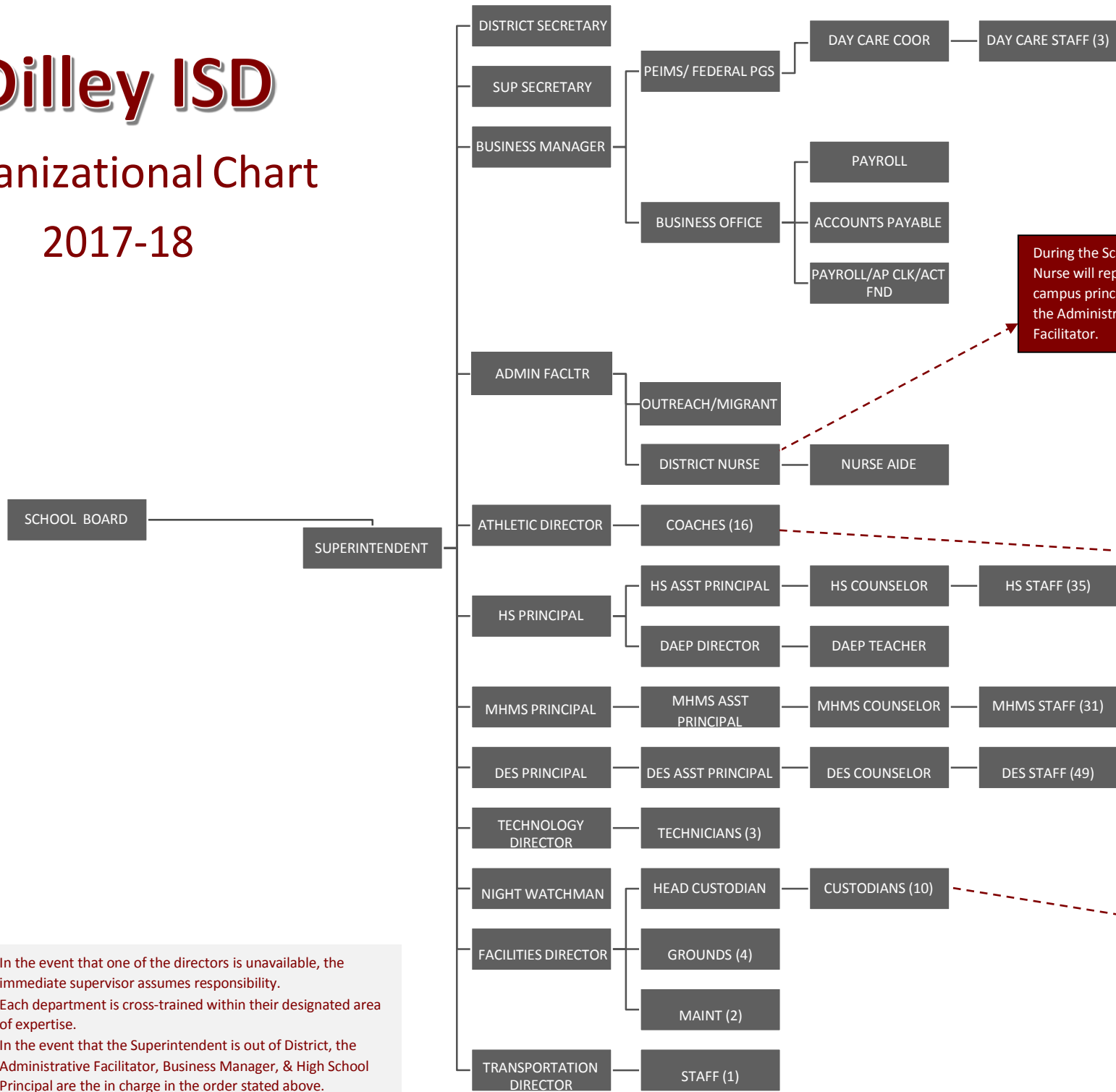


Dilley ISD

Organizational Chart 2017-18



During the School Year, Nurse will report to campus principal prior to the Administrative Facilitator.

During the School Year, coaches will report to campus principal prior to the Athletic Director.

During the School Year, custodians will report to campus principal prior to the Facilities Director.

- In the event that one of the directors is unavailable, the immediate supervisor assumes responsibility.
- Each department is cross-trained within their designated area of expertise.
- In the event that the Superintendent is out of District, the Administrative Facilitator, Business Manager, & High School Principal are the in charge in the order stated above.