

Re-Opening School Delivery Choices

We are very happy that you have chosen Webbers Falls Public School to serve the educational needs of your children. Like you, we look forward to starting back to school. Because of the ongoing health related issues that this pandemic has created, we want to clarify what our district plans are to support all students in a safe and healthy manner as they attain their education. Our students' health and safety are our top priority; however, because of the uncertainty of this disease, there will be inherent risks that are associated with the re-opening of school. Regular updates will be made to this plan based on information provided by the CDC, WHO, and applicable federal, state, and local agencies.

Our district will offer two different educational pathways to meet the educational services for the 2020-2021 school year.

Connectivity / Internet access

Students who have limited or no Internet access will be assigned a T-Mobile hot spot that will give them connectivity for the most part in any location of our district free of charge. All school policies will be in effect in regards to the use of computer and hotspot devices and students will be required to only use the device for educational services directly related to Webbers Falls Public School. **The hotspot device is equipped with content filtering apps that will notify the proper authorities if used in an inappropriate manner.**

- 1) Traditional / Blended Learning
- 2) Virtual Learning

Traditional School- Offered to students Pre K – 12th grades who will be on campus attending school at Webbers Falls Public School facilities. Students would attend as usual with precautions to limit exposure to the COVID-19 virus. **These precautions will be outlined in the next pages of this document.**

Traditional Classroom will consist of a hybrid learning approach - Students Pre K – 12th will be enrolled in classes as students within the traditional school setting and follow the lesson plans of their teacher or teachers using **GOOGLE CLASSROOM**. This approach will allow for temporary or extended outages that may arise from Virus related issues. This option would also allow for students who are in the high risk categories, had CLOSE exposure to COVID-19, and/or ill themselves. In the event that we have a temporary outage or if a student is sent home for fever or COVID-19 symptoms, students will participate in distance learning activities provided by the teacher. A daily attendance check-in form will be kept by the student's teacher(s) and as long as assignments are completed satisfactorily and on time, absences will not be counted against the students.

Teachers as well as support staff will receive in service training as well as support in moving to a Google Classroom platform of instruction. Teachers and students will use online curriculum at least once a week so that both students and teachers are familiar with the programs and can easily transition to full-time virtual instruction during any school closures, whether they be short-term or long-term.

“Hybrid learning” will occur naturally if/when we have periodic school closures as the students will be familiar with the approach because of its frequent use in the everyday classroom. This Hybrid approach practiced during the school year will allow for a seamless transition during such times that our district finds we must move to a distance learning platform because Covid-19, Snow Days, or Flooding. Our district has determined it is vital to be ready and have students equipped to move to a distance learning environment that will provided the most productive means to meet their educational needs. Therefore, this school year students 5th – 12th will have their Chromebooks checked out to them. A parent letter will be generated that has their child’s/children’s Wengage gradebook login information, as well as a form that will have a place to put all other login information (Google Classroom/Email, Exact Path, Study Island, Reading Eggs.)

Virtual Learning – Offered to students 6th – 12th grades and would be off campus using Edgenuity a complete online program separate from the regular classroom. This is a self-paced curriculum for students choosing this option.

- Students or parents interested in this option should call and set up an appointment to meet with the Principal and Virtual Learning teacher. This meeting will be an intake meeting to review the process and procedures and determine if this option is best for the student. Any student who enrolls in the Virtual Learning approach will be required to finish the semester before being allowed back to the traditional classroom approach. Any student enrolled in the Virtual approach will not be allowed to participate in extra-curricular activities. Virtual Learning will begin on the first day of school August 13, 2020.

COVID-19

COVID – 19 stands for “coronavirus disease 2019.” It is caused by a virus called SARS – CoV2. This is the virus that has spread and continues to spread around the world. This virus caused the closure of our district in the spring of last year. It is important that we review the following with you as we discuss our districts plans for re-opening: 1) How the virus is known to spread, 2) What are the signs and symptoms, 3) Prevention of the spread of COVID – 19.

It is essential for Webbers Falls School and the community to work together to prevent the introduction and spread of COVID-19 in the school environment and in the community while still providing a quality education program.

State statute gives public school districts the authority to exclude students who have a contagious disease such as COVID-19 or who are liable to transmit the disease after having been exposed to it. See OAC 310:520-1-3.

In addition, the local health department has the authority to exclude students from school and may order students and others to isolate or quarantine. OAC 310:520-1-3. Webbers Falls School will work closely with their local health departments.

Exclusion from School

Furthermore, OSDH rules authorize schools to exclude from school any child exhibiting one or more of the following symptoms:

- fever at or above 100 degrees Fahrenheit;
- sore throat or tonsillitis;
- any nasal discharge accompanied by fever;
- a severe cough producing phlegm; or
- any inflammation of the eyes or lids.

See OAC 310:520-1-4.

Screening

- Parent/Guardian shall take a child's temperature before school and then certifies that the child did not have a temperature at or above 100 degrees Fahrenheit. School staff will take the student's temperature upon arrival or boarding a bus. If the student has a temperature at or above 100 degrees Fahrenheit the student will be sent home.

Individuals diagnosed with COVID-19 may not visit a school facility until the following criteria are met:

- At least 3 days (72 hours) have passed since recovery (resolution of fever without the use of fever-reducing medications); **and**
- The individual has improvement in respiratory symptoms (e.g., cough, shortness of breath); **and**
- At least 7 days have passed since symptoms first appeared.

If a staff member or student has **known close contact** with an individual who has tested positive (e.g., someone in their household), they should stay home, self-monitor for symptoms and be tested. The individual should not return to the school until they have been tested and/or have completed a 14-day quarantine period.

If a staff member or student **tests positive**, schools should follow these steps:

- Immediately isolate the individual if they are at school. Send the ill staff member home and call families to pick up sick children as quickly as possible. If they cannot immediately leave the premises an isolated room/area will be provided.
- School nurses/staff will use Standard and Transmission-Based Precautions (<https://www.cdc.gov/coronavirus/2019-ncov/community/schools-childcare/schools.html>) when caring for sick people.

- Contact the local county health department *first* to report the case. If you have trouble reaching someone, phone the Oklahoma State Department of Health on-call epidemiologist at (405) 271- 4060.
- Identify and close areas of the school building where the individual spent more than 30 minutes. Wait for at least 24 hours, or as long as possible, before staff disinfect the area with approved cleaners in accordance with CDC and Oklahoma State Department of Health guidelines.
- Work with health officials to determine if school closure is warranted and for additional measures the school must take to contain exposure.
- Webbers Falls School will be following the School Decision Tree as suggested by the CDC.

COVID – 19 Symptoms

Usually start within 4 – 5 days after a person is infected with the virus. But in some cases up to 14 days for the symptoms to appear. Some possible symptoms.

- Fever
- Cough
- Trouble Breathing
- Shaking Chills
- Muscle Aches
- Headache
- Sore Throat
- Problems with sense of smell or taste

The big question is how do we prevent the infection? Without a vaccine to prevent COVID – 19, there are things we can do to slow the spread or avoid exposure to the virus. Those things include:

- 1) Practicing social distancing (as possible)
- 2) Washing hands often
- 3) Avoid touching face
- 4) Wear face masks

Know that we are sensitive to the feelings and emotional effects of some of the procedures we must implement to ensure we are doing all things possible to keep our school community safe. Please understand we will always do our best to ensure a healthy safe environment. All of our procedures have been developed as a result of the latest guidance available.

Student / Staff Wellbeing:

Temperature will be taken of every person entering our school.

Understand, it is not possible for our school to keep six feet between students, we will stress social distancing and minimal touching as much as possible.

All staff are required to attend COVID – 19 professional development training in order to be familiar with signs, symptoms, precautions for the spread.

Posting of reminders to wash or sanitize hands, not share items, and cleaning their environment.

Hand sanitizer will be available in hallways, classroom and other high traffic areas.

Students and parents are encouraged to bring their own water bottles; we will have refill stations throughout the building.

All students will be provided a personal Chromebook or iPad for their use in order to avoid sharing of devices.

Environment Planning and Programming:

Desks will be spaced out as much as possible.

Students breaks and recess times will be adjusted to help social distancing.

Sharing of materials will be discouraged. Students needing supplies need to inform their teacher.

All ventilation will be checked and serviced before the start of school.

Staff will be assigned designated cleaning areas to clean during the school day.

Cleaning Protocol:

Teachers will have a procedure to clean desks frequently.

The district purchased additional supplies for each classroom including cleaning towels, spray bottles in addition to hand sanitizers.

Foggers that spray disinfectant for the building, gym, ag room and buses.

Webbers Falls Transportation for initial re-opening

We understand the importance of our transportation services to the students and parents of our district. Our district being small limits the number of route buses as well as drivers to drive these buses. To try and comply with CDC and Stated Department of Education recommendation, we will add an additional bus route in the morning and the evening. We encourage any parent that has the ability to transport their child to and from school. We understand this may not always be possible but please take this in to consideration for the time being. This will allow us to help with social distancing on our buses.

Buses:

- Buses are cleaned and sanitized twice daily.
- Windows will be lowered to maximize air flow. (students need to dress appropriately)
- Each student's temperature will be checked as they enter the bus
 - If a student's temperature is over 100 degrees, the student will put on a mask and sit in the front of the bus and all other students distanced. The student's temperature will be rechecked at school upon arrival and if registers over 100 degree parents will be called for students to go home.
- **Students may wear mask (not required – student's choice)**
- Students will be seated as far as possible.
- Bus rules will be strictly enforced. The importance of not changing seats and not touching others during this time.

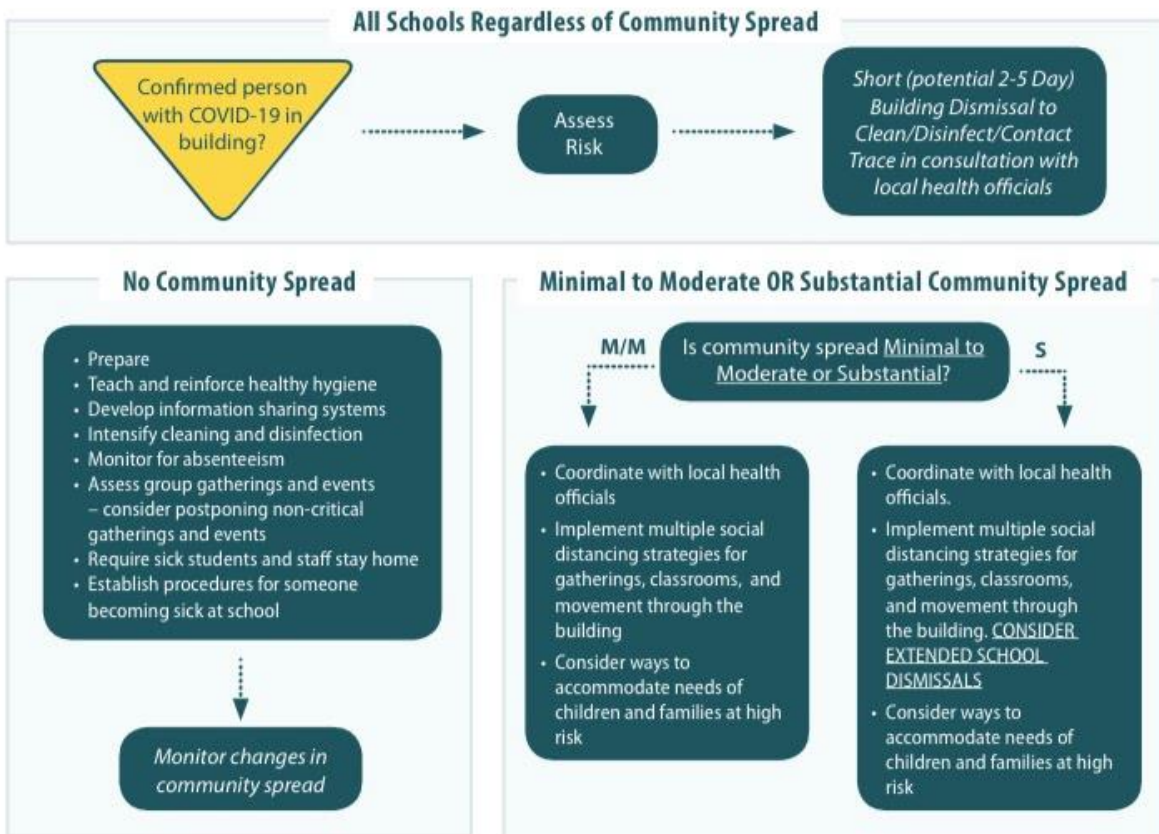
Car Riders and Walkers:

- Each person will have temperature checked before entering the building
- All Car Riders will be dropped off on west side of gym, students will enter Triage area in lobby to check temperature and screen for temperature and symptoms.
- If a student's temperature is over 100 degrees, the student will be taken to a designated area to have the temperature rechecked. If the student's temperature remains to show over 100 degrees, the student's parent will be called to pick up their students.
- Upon screening cleared students will then be assigned a location to meet according to their grade level.
- Staff may enter from east-side of gym.
- Bus rider will be sent to a designated location.
- Student drivers enter campus from north exit by rock wall.
- Road block set up on the south end of road in front of school.
- All students sent to gyms - designated areas.
- Home Room, 8:15-8:30 a.m.
- Grab and go breakfasts for all students (PK-4th)

Visitors to the school:

- In an effort to reduce the exposure chances, it is recommended that visitors to the building be limited to emergencies or issues of extreme importance.
 - All meetings need to be made through the office.
 - Classroom visits will be limited.
 - No Lunch deliveries during this time.
- **First day of school**
Elementary parents wearing a mask and following temperature check may, if necessary, walk their student(s) to their class. However, after the first day adults will not be allowed to go to classrooms or be in the hallways before or after school.

School Decision Tree



<https://www.cdc.gov/coronavirus/2019-ncov/community/schools-childcare/guidance-for-schools.html>