

Chilton Independent School District 2020-2021 Re-Entry Plan

Project A.N.C.H.O.R.S. Away!

(Academics Nurtured with Compassion, Hope, Optimism, Resilience, and Safety)



VISION:

Chilton ISD students will transcend socio-economic limits to achieve sustainable success in an evolving society.

MISSION:

The mission of Chilton ISD is to develop learners who are able to:

- Communicate proficiently
- Create innovatively
- Think Critically
- Reason Logically
- Compete Globally

This plan was developed to govern the Chilton ISD Re-entry during the COVID-19 pandemic. Thanks to Chilton ISD district and department leaders, the Community Re-Entry task force, and the Board of Trustees for working as a unit to craft this plan.



“Lighthouses are endlessly suggestive signifiers of both human isolation and our ultimate connectedness to each other.” - Virginia Woolf

Over the past few months, the world has presented several crises for us to navigate: the coronavirus pandemic, political unrest, issues of social injustice, and the uncertainty of life as we have known it. However, I truly believe that there is **promise** on the other side of every **problem**. Unfortunately, the promise is often hidden by the storms that engulf our reality.

Though life is uncertain, the Chilton I.S.D. intends to serve as a Lighthouse for the community. A lighthouse is often seen as a towering vertical structure in a horizontal world with the responsibility of being a beacon of hope. The Chilton I.S.D. is committed to serving the community as a beacon of hope as we navigate these troubling times. Though we have been isolated for a period, we are working to develop a plan that will allow us to safely reconnect.

Thank you for your continued patience and understanding as we work to ensure the safety, academic, social, and emotional growth of our students. As a school, community, and family, we will refuse to sink. We must make #EveryMomentMatter.

Brandon K. Hubbard, Superintendent of Schools

This plan was developed to govern the Chilton ISD Re-entry during the COVID-19 pandemic. Thanks to Chilton ISD district and department leaders, the Community Re-Entry task force, and the Board of Trustees for working as a unit to craft this plan.

Community Engagement

In order to ensure that all community stakeholders had the opportunity provide valuable insight regarding the re-entry process, the Chilton ISD developed the Community Re-Entry Task Force. This task force sought a team of teachers, administrators, community members, parents, and students to develop and vet a re-entry process that met the academic needs of students while ensuring the safety of students and staff members. To date, with the help of the re-entry committee, the Chilton ISD has accomplished the following:

- Developed and distributed an on-line community re-entry survey
https://docs.google.com/forms/d/19W6OT9PsQh9BFSich7gUnDI_R62m7VDK1BZKPAK_JSk/edit
- Developed and disseminated an on-line technology survey to ascertain technology needs of our students and families
https://docs.google.com/forms/d/1b2tuN0cKeSDkChKjoPWAg1D73mzR2e_gltHvgF04Xo4/edit
- Discussed the purchase of Temperature Scanning Stations for Chilton ISD Facilities (FEEVR Temperature Scanning Stations) <https://fevr.tech/>
- Discussed Local PPE purchases for the Chilton ISD
 - 850 Face Shields (200 for buses-can be sanitized and re-used, one for every staff member, and one for each student)
 - 260 18" Desk Shields (Elementary Campus)
 - 275 21" Desk Shields (Secondary Campus)
 - 550 Student Cloth Face Masks (one for every student)
 - 100 Adult Cloth Face Masks (one for every staff member)
- Discussed and developed student transportation guidelines
- Discussed and developed staff, student, and visitor entry procedures for district facilities

Meetings are scheduled for the following dates at 2:00 p.m. in the district cafeteria or via Zoom:

- June 8, 2020
- June 22, 2020
- July 6, 2020
- July 20, 2020
- August 3, 2020
- August 17, 2020

For more detailed information regarding the Community Re-Entry Task Force, please visit the following website: <https://www.chiltonisd.org/o/chilton-isd/browse/141905>

This plan was developed to govern the Chilton ISD Re-entry during the COVID-19 pandemic. Thanks to Chilton ISD district and department leaders, the Community Re-Entry task force, and the Board of Trustees for working as a unit to craft this plan.

Core Learning and Academics

The Chilton ISD envisions a vibrant, interactive learning environment that promotes student growth and kindles a love for learning. Given the current pandemic, the Chilton ISD will offer the following learning opportunities for students during the 2020-2021 school year:

On-Site Learning: On-site learning for the 2020-2021 school year will offer the most equitable access to education for Chilton ISD students while considering the increased safety needs of students and staff members. Though students will receive on-campus instruction and academic supports, the Chilton ISD will follow the recommendations of the CDC, State Government Agencies, and the local community to design a learning environment that seeks to protect students. An exhaustive list of safety requirements can be found in the Safe Start section of this plan. A few of those adjustments will include:

- Alternative seating arrangements, PPE requirements and temperature scans for students using school transportation
- Temperature scans for all students, staff members, and visitors to Chilton ISD facilities
- PPE Requirements for students and staff members during the day (details will be presented in the Safe Start section of this plan)
- Reduced transitions for students in elementary (1.5 hour instruction block sequence) and secondary (odd/even day rotation with students only attending four classes daily)
- All campus-wide gatherings presented virtually
- Updated lunch procedures that will reduce the number of students in cafeteria at a given time to facilitate social distancing and/or serving breakfast and lunch meals in the classroom setting.
- Consistent, periodic sanitation of high frequency areas (restrooms, office areas, door handles, etc.). A detailed sanitation schedule can be found in the Safe Start section of the plan.

Attendance accounting for the on-site model will be similar to the traditional model. Attendance will be taken electronically by teachers and submitted to the campus and district attendance personnel for state accounting purposes. Students must attend 90% of courses to receive course credit.

Elementary Schedule:

Time Block	Pre-Kindergarten Activities (Self-Contained)
7:30 a.m. – 8:00 a.m.	Breakfast in Classrooms, Temperature Checks and Screening, Hand Sanitation
8:00 a.m. – 9:15 a.m.	Reading Instructional Block
9:15 a.m. – 10:00 a.m.	Elective (Art, PE, Library, Lab)
10:00 a.m. – 10:30 a.m.	Lunch in Cafeteria
10:30 a.m. – 11:00 a.m.	Recess (outdoors when possible)
11:00 a.m. – 12:00 p.m.	Writing, SS, Science
12:00 p.m. – 1:15 p.m.	Mathematics Instructional Block
1:15 p.m. – 2:00 p.m.	Story Time, Tiered Instructional Time
2:00 p.m. – 3:15 p.m.	Nap Time

This plan was developed to govern the Chilton ISD Re-entry during the COVID-19 pandemic. Thanks to Chilton ISD district and department leaders, the Community Re-Entry task force, and the Board of Trustees for working as a unit to craft this plan.

3:15 p.m. – 3:30 p.m.	Snack Time (all snacks must be pre-packaged)
3:30 p.m. – 3:45 p.m.	Sanitation and Dismissal

Time Block	Kindergarten Activities (Self-Contained)
7:30 a.m. – 8:00 a.m.	Breakfast in Classrooms, Temperature Checks and Screening, Hand Sanitation
8:00 a.m. – 10:30 a.m.	Reading and Writing Instructional Block
10:35 a.m. – 11:05 a.m.	Lunch in Cafeteria
11:05 a.m. – 11:45 a.m.	Elective (Art, PE, Library, Lab)
11:45 a.m. – 1:15 p.m.	Math Instructional Block
1:15 p.m. – 1:40 p.m.	Recess (outdoors when possible)
1:40 p.m. – 2:40 p.m.	Tiered Instructional Block
2:40 p.m. – 3:30 p.m.	Science and SS
3:30 p.m. – 3:45 p.m.	Sanitation and Dismissal Procedures
Time Block	First Grade (Self-Contained)
7:30 a.m. – 8:00 a.m.	Breakfast in Classrooms, Temperature Checks and Screening, Hand Sanitation
8:00 a.m. – 10:30 a.m.	Reading and Writing Instructional Block
10:35 a.m. – 11:05 a.m.	Lunch in Cafeteria
11:05 a.m. – 11:45 a.m.	Elective (Art, PE, Library, Lab)
11:45 a.m. – 1:15 p.m.	Math Instructional Block
1:15 p.m. – 1:40 p.m.	Recess (outdoors when possible)
1:40 p.m. – 2:40 p.m.	Tiered Instructional Block
2:40 p.m. – 3:30 p.m.	Science and SS
3:30 p.m. – 3:45 p.m.	Sanitation and Dismissal Procedures

Time Block	Second Grade (Self-Contained)
7:30 a.m. – 8:00 a.m.	Breakfast in Classrooms, Temperature Checks and Screening, Hand Sanitation
8:00 a.m. – 10:00 a.m.	Reading Instructional Block
10:00 a.m. – 10:45 a.m.	Elective (Art, PE, Library, Lab)
10:45 a.m. – 11:20 a.m.	Writing and Tiered Instruction
11:20 a.m. – 11:50 p.m.	Lunch in Cafeteria
11:50 p.m. – 12:30 p.m.	Writing and Tiered Instruction
12:30 p.m. – 2:00 p.m.	Math Instructional Block
2:00 p.m. – 3:00 p.m.	Science and SS
3:00 p.m. – 3:25 p.m.	Recess (outdoors when possible)
3:25 p.m. – 3:45 p.m.	Sanitation and Dismissal

Time Block	Third Grade
7:30 a.m. – 8:00 a.m.	Breakfast in Classrooms, Temperature Checks and Screening, Hand Sanitation

This plan was developed to govern the Chilton ISD Re-entry during the COVID-19 pandemic. Thanks to Chilton ISD district and department leaders, the Community Re-Entry task force, and the Board of Trustees for working as a unit to craft this plan.

8:00 a.m. – 9:30 a.m.	Math or Reading Instructional Block 1
9:30 a.m. – 11:00 a.m.	Math or Reading Instructional Block 2
11:00 a.m. – 11:30 a.m.	Tiered Instruction
11:30 a.m. – 12:00 p.m.	Lunch in Cafeteria
12:00 p.m. – 1:15 p.m.	Science or SS Instructional Block 1
1:15 p.m. – 2:00 p.m.	Elective (Art, PE, Library, Lab)
2:00 p.m. – 3:00 p.m.	Science or SS Instructional Block 2
3:00 p.m. – 3:30 p.m.	Tiered Instruction or Homeroom
3:30 p.m. – 3:45 p.m.	Sanitation and Dismissal

Time Block	Fourth and Fifth Grades
7:30 a.m. – 8:00 a.m.	Breakfast in Classrooms, Temperature Checks and Screening, Hand Sanitation
8:00 a.m. – 9:00 a.m.	Instructional Block 1
9:00 a.m. – 10:00 a.m.	Instructional Block 2
10:00 a.m. – 10:45 a.m.	Tiered Instruction
10:45 a.m. – 11:45 a.m.	Lunch in Classroom
11:45 a.m. – 12:30 p.m.	Tiered Intervention
12:30 p.m. – 1:30 p.m.	Instructional Block 3
1:30 p.m. – 2:30 p.m.	Instructional Block 4
2:30 p.m. – 3:15 p.m.	Elective (Art, PE, Library, Lab)
3:15 p.m. – 3:35 p.m.	Homeroom
3:35 p.m. – 3:45 p.m.	Sanitation and Dismissal Procedures

Secondary Schedule: Odd and Even Day Rotation

Monday: Odd Day

Tuesday: Even Day

Wednesday: Odd Day

Thursday: Even Day

Friday: Traditional Schedule (Academic Closure)

Period	Time (Monday – Thursday)
Advisory	7:45 a.m. – 8:15 a.m.
1/2	8:18 a.m. – 9:58 a.m.
3/4	10:01 a.m. – 11:41 a.m.
5/6	11:44 a.m. – 1:54 p.m.
7/8	1:57 p.m. – 3:47 p.m.

This plan was developed to govern the Chilton ISD Re-entry during the COVID-19 pandemic. Thanks to Chilton ISD district and department leaders, the Community Re-Entry task force, and the Board of Trustees for working as a unit to craft this plan.

Period	Time (Friday)
1	7:45 a.m. – 8:37 a.m.
2	8:40 a.m. – 9:27 a.m.
3	9:30 a.m. – 10:17 a.m.
4	10:20 a.m. – 11:07 a.m.
5	11:10 a.m. – 12:27 p.m.
6	12:30 p.m. – 1:17 p.m.
7	1:20 p.m. – 2:07 p.m.
8	2:10 p.m. – 2:57 p.m.

Remote Asynchronous Model:

The Chilton ISD will offer an asynchronous learning model that does not require the student and instructor to be engaged in real-time. This model allows the student to learn from instruction that is not occurring in real-time. Though there is a low technology opportunity, the district recommends the use of technology for the completion of the asynchronous instructional model. Though students will not be required to engage synchronously (real-time) with instructors, students will be required to complete a series of learning modules, ***daily***, to receive attendance credit. **We anticipate asynchronous students should engage with academic assignments for, at least, 4-5 hours daily.** For each day that students do not engage for the appropriate length of time and/or do not complete the daily learning logs, the student cannot be given attendance credit for that day. Please remember that the student is still mandated to meet the 90% attendance mandate to receive credit for asynchronous work completed.

The learning platform used to deliver the asynchronous courses will be the Google Classroom platform. Students will log on to the teacher of records Google classroom or the district website to access the daily learning logs. **Please understand that this model is more intense than the manner of assignment completion and submission used during the Spring of 2020. Students will be required to log 4 hours of seat time and make the adequate assignment submissions for full-credit.**

The Remote Asynchronous Model will require the student to maintain discipline and be a self-starter as it relates to completing the daily log of assignments, watching teacher assigned videos, and logging adequate seat-time for attendance credit.

For students unable to access internet connection, the Chilton ISD will develop rigorous and engaging home curriculum to ensure academic progress. Just as with the online version, students will be expected to spend 4-5 hours daily completing the daily assignment logs provided. The Chilton ISD will offer a remote learning assistance lab twice weekly for all students participating in the Remote Asynchronous program. Under this model, students and parents will be responsible for submitting assignments and assignment logs daily.

This plan was developed to govern the Chilton ISD Re-entry during the COVID-19 pandemic. Thanks to Chilton ISD district and department leaders, the Community Re-Entry task force, and the Board of Trustees for working as a unit to craft this plan.

Registration

Registration for the 2020-2021 academic year will begin on Monday, July 6, 2020 from 8:00 a.m. – 12:00 p.m. and from 1:00 p.m. – 4:00 p.m. Registration can be completed via parent portal or traditionally. For traditional documents, parents will need to visit the Chilton ISD Administration offices. ***Please note that beginning Monday, July 6, 2020, all visitors to Chilton ISD will be required to wear face coverings for the safety of students and staff.*** For assistance completing the online registration process, please contact Mrs. LaTrice Canada, PEIMS Coordinator, at 254-546-1228 or lcanda@chiltonisd.org.

During registration, parents will need to indicate whether their student will participate in the **On-Site Learning Model** or the **Remote Asynchronous Learning Model**. Those students completing one of the remote learning models will be required to engage in that pathway for, at least, one grading cycle. Exceptions must be approved by the campus principal.

Extra-Curricular and Co-Curricular Participation

The Chilton ISD Board of Trustees and Administration have decided to grant remote students the opportunity to participate in extra-curricular and co-curricular activities. Participation will include UIL sanctioned athletics, band, cheerleading, robotics, UIL academics, theatre, FCCLA, and FFA. We want students and parents to understand that participation in these organizations, clubs, and athletic teams will require onsite practices and meetings as scheduled by the sponsor and/or coach. Though your child will be allowed to participate, please understand that all practice and participation requirements will not be waived. In addition, the Chilton ISD will require that all athletes travel with the team to scheduled contests. If you have any additional questions, please contact Chris James, Athletic Director.

Technology Accessibility

The Chilton ISD understands the complexity of accessing adequate WiFi in rural territories. Therefore, we are working toward the capability of providing access via hotspot to Chilton ISD students to use with Chilton issued chromebook devices. The cost for this service will be \$400.00 annually and will allow the student unlimited access to complete homework assignments using their chromebook device. Please note that the hotspot will be specifically programmed to Chilton ISD chromebook devices. For additional information, please contact the administration offices.

Safe Re-Entry Measures

Staff Entry

All Chilton ISD Staff Members will be required to check-in daily. Check-in stations will be located in the Elementary School (for Elementary Staff), the Secondary Campus (for Secondary Staff), and in the district cafeteria (for child nutrition). Entry procedures will be as outlined below:

1. Principals and Department supervisors will assign personnel to manage the check-in stations.

This plan was developed to govern the Chilton ISD Re-entry during the COVID-19 pandemic. Thanks to Chilton ISD district and department leaders, the Community Re-Entry task force, and the Board of Trustees for working as a unit to craft this plan.

2. Once a staff member arrives, he or she will step in front of the FEEVR temperature scan station for a temperature reading. If the signal indicates green, then the staff member will be given his or her district ID and allowed to proceed into the building. If the reading displays red, indicating an elevated temperature, then the staff member will have a second scan using a hand-held digital device. If this secondary scan also shows an elevated temperature, then the staff member will be required to exit the building and seek medical attention.
3. Though staff members will only sign the entry attestation once on the first day of in-service, each staff member will complete daily attestation using the time clock system.
4. All staff members must sanitize hands immediately following entry.
5. Staff members will be required to wear face coverings upon entry into the building. It is recommended that staff members wear face shield coverings to allow for students to see the teachers face and articulation of phrases.
6. Before leaving each day, staff members will be required to leave ID badges at the check-in station. These badges will be disinfected using spray disinfectant or electronic disinfection (similar to how safety goggles are disinfected in the science laboratory).

Student Entry

All Chilton ISD students will be screened for temperature daily. There will be two stations at the elementary campus, two stations at the secondary campus, and one station at the cafeteria. Entry procedures will be as outlined below:

1. Once students arrive on campus at 7:30 a.m., students will be directed to the appropriate campus. Elementary students who walk to campus or whose parents drop them to campus should check-in at the backside of the elementary campus (Drop-off line). Those elementary students riding the bus, should proceed to the main entry of the cafeteria for check-in. Students in grades 6 – 8 should proceed to the middle school entrance for temperature scanning. High School students should proceed to the main entrance for temperature scanning. Those students with classes in the portable section will use the entrance nearest the portables for check-in. Any student exhibiting an elevated temperature from the FEEVR scan station and the hand-held device will be isolated in the nurses station for parent pick-up.
2. Upon clear temperature scans, students will be given a color coded sticker to show that temperature protocols have been met.
3. Secondary students will be allowed to retrieve their grab and go breakfast meal and report to their classes. All elementary breakfast meals will be served between 7:30 a.m. and 8:00 a.m. in the classrooms.
4. Students will be required to wear face coverings until seated at their desk with the desk shield in place.
5. All students will be required to wear face shield during transitions.
6. Upon entry, students will be required to sanitize their hands. For students in 1st grade and below, sanitation will involve antibacterial hand wash and water, as opposed to liquid hand sanitizer.

This plan was developed to govern the Chilton ISD Re-entry during the COVID-19 pandemic. Thanks to Chilton ISD district and department leaders, the Community Re-Entry task force, and the Board of Trustees for working as a unit to craft this plan.

Visitor Entry

During the 2020-2021 academic year, outside visitation will be kept to a minimum. All visitors choosing to enter the Chilton ISD will be required to adhere to the following procedures:

1. Wear a face covering as recommended by state and federal health officials.
2. Sign the Chilton ISD Visitor Attestation document for each visit to a Chilton ISD facility.
3. Submit to temperature scan using the FEEVR temperature scan station. If the scan display is green (indicating a sufficient temperature reading), the visitor will be directed to the appropriate office for further assistance. If the temperature scan display is red (indicating an elevated temperature), the visitor will be re-scanned using a hand-held digital thermometer. A second elevated display will result in the visitor being refused entry into the facility.

Please understand that any visitor refusing to wear a face covering will be denied entry into Chilton ISD facilities.

Student Transportation Guidelines

During the 2020-2021 academic year, the Chilton ISD Transportation Department has enacted additional safety protocols to ensure the safety of students and staff members. In addition, an additional bus assistant will be present for each route to ensure compliance with the safety protocols. Buses will be sprayed after each use.

1. The bus assistant will scan each student's temperature using a digital thermometer upon entry. Those students exhibiting an elevated temperature will not be allowed access to the bus. Prior to the beginning of the school year, parents will sign this attestation for all students riding the bus.
2. Upon entry, students will be required to sanitize hands with hand sanitizer. This step will be avoided for students in first grade and below.
3. Students will be required to wear face coverings while traveling to the campus.
4. The row directly behind the driver will be left vacant. There will be a vacant seat between each rider. Students will not be allowed to share a seat unless it is with a family member residing in the same residence.
5. The bus assistant will distribute stickers in conjunction with the school district to facilitate the entry of bus riders into the appropriate building.
6. For extra-curricular travel, the same seating arrangements will apply. Additionally, extra-curricular participants and sponsors will be required to wear face coverings during travel.

This plan was developed to govern the Chilton ISD Re-entry during the COVID-19 pandemic. Thanks to Chilton ISD district and department leaders, the Community Re-Entry task force, and the Board of Trustees for working as a unit to craft this plan.

Child Nutrition Guidelines

In conjunction with the Child Nutrition Director, the Chilton ISD has developed a plan to allow most students to continue use of the district cafeteria for feeding. This guideline will allow no more than two grade levels, approximately 80 students in the cafeteria at any given time. While seated in the cafeteria, the following guidelines will be followed:

- Students will be seated according to state and federal distancing guidelines.
- District maintenance personnel will sanitize after each use. The sanitizer used has a three-minute kill time. Therefore, there is a minimum of ten minutes between use of the district cafeteria.
- District and Child Nutrition administration will work to ensure that seating patterns are consistent and arranged to ensure social distancing.
- All breakfast meals will be served in the classroom until further notice.

For those students participating in the Asynchronous Learning Model, the Chilton ISD will continue the Grab and Go program to ensure these students have access to nutritious meals during the school day.

PPE Requirements

The Chilton ISD has issued PPE requirements for all students and employees. We are remaining flexible with students in first grade and below to ensure their safety and well-being. The district has purchased the following PPE for Chilton ISD students and employees:

- 1 Cloth Face Covering
- 1 Face Shield

In addition, the TEA has provided districts with enough cloth face coverings to ensure that each student will receive two additional cloth face coverings. Please ensure that you adequately mark your child's face coverings for easy identification.

At present, we recommend that parents begin preparing to ensure that students have one mask for each instructional day on campus.

The district has also allocated 200 Re-Usable Face Shields for student transportation. The district has reallocated funding to spend approximately \$5000 quarterly on PPE and sanitation equipment to ensure an adequate supply for the 2020-2021 academic year. Additional PPE will be delivered from the Texas Education Agency to help ensure the safety of students and staff members. At present, all visitors to Chilton ISD facilities will be required to wear face coverings.

Sanitation

The Chilton ISD has increased maintenance personnel and the operations budget to ensure adequate supplies of sanitation equipment. In addition to the purchase of three electrostatic sanitation machines,

This plan was developed to govern the Chilton ISD Re-entry during the COVID-19 pandemic. Thanks to Chilton ISD district and department leaders, the Community Re-Entry task force, and the Board of Trustees for working as a unit to craft this plan.

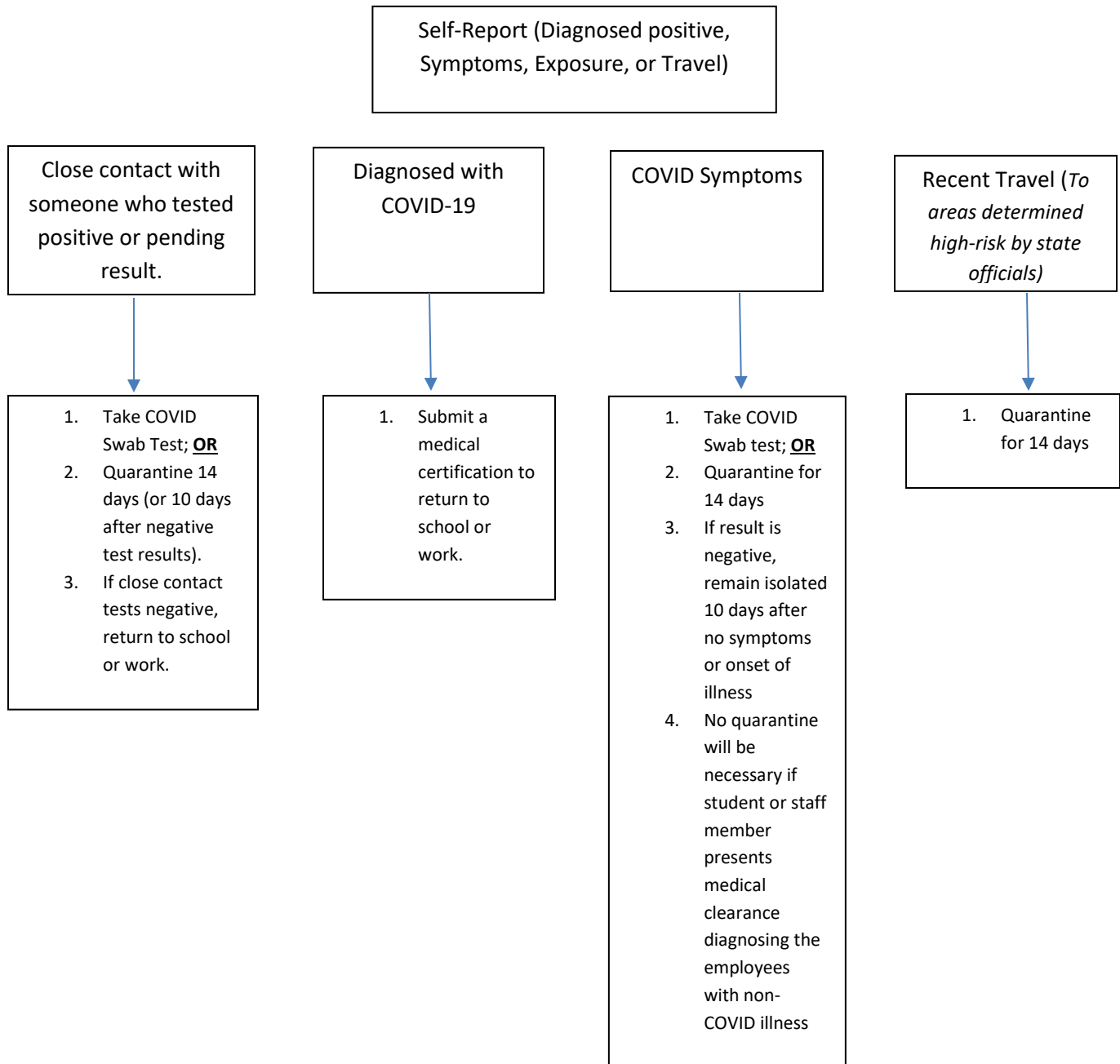
the Chilton ISD will supply every classroom with basic sanitation supplies (disinfectant, microfiber towels, gloves, and hand sanitizer). Prior to the beginning of the school year, the Director of Maintenance and Operations will publish a detailed schedule for the sanitation of all commonly used and high traffic areas throughout the day. The intent is to ensure that all areas are cleaned and sprayed before and after major transitions. The full schedule for disinfection will be posted prior to August 1, 2020.

The most significant investment will come with the use of the UVC Ultra Model 19 Air and Surface Sanitation system. This system is a portable, self-contained particulate air filtration system designed to create air and surface sanitation for any room. The UVC Ultra Model 19 uses a True HEPA filter and active carbon filter in conjunction with Ultraviolet Germicidal Irradiation to destroy bacteria and germs. In addition, the system uses non-toxic Hypochlorous Acid solution to periodically fog classroom spaces. Hypochlorous is an electrolyzed saltwater solution that has proven more effective than traditional bleach with no toxicity.

This plan was developed to govern the Chilton ISD Re-entry during the COVID-19 pandemic. Thanks to Chilton ISD district and department leaders, the Community Re-Entry task force, and the Board of Trustees for working as a unit to craft this plan.

Chilton ISD Return to Work Flowchart

Though we hope that proactive screening measures, increased sanitation, and personal protective equipment policies will ensure the safety of all Chilton ISD students and staff members, we want to have a definitive plan of action should the unfortunate scenario arise and one of our Chilton ISD students or staff presents with symptoms or tests positive. *This flow chart will be the plan of action beginning July 7, 2020.*



This plan was developed to govern the Chilton ISD Re-entry during the COVID-19 pandemic. Thanks to Chilton ISD district and department leaders, the Community Re-Entry task force, and the Board of Trustees for working as a unit to craft this plan.