

Fall 2020 Draft Return to Learning Models

The goal for the 20/21 reopening of schools is to meet the needs of our students in a variety of ways, regardless of the instructional setting. Learning may take place at home for some students, or at times, for all students. Learning may involve a combination of on- and off-campus learning. The draft plans that will be presented to the Board of Education on July 15, 2020 are presented as follows and refer to the phases of the Restore Illinois Plan.

Definitions:

Asynchronous learning: teacher and students are not interacting at the same time, nor in the same place

Synchronous learning: teacher and students are interacting at the same time, but not in the same place

Phase 3

Most instruction would take place off-campus during Phase 3. This learning model will differ from remote learning March-May 2020, so it will be called Remote Learning 2.0

Phase 3 Remote Learning 2.0	Schneider Elementary	BRIJHS	BRHS
Mon	Asynchronous learning for all students. Teachers plan for instruction and attend professional development.		
Tues-Fri	Daily 15-30 minute synchronous meetings with classroom teachers prioritizing ELA and math standards Set office hours Student and parent contact Teachers assess work and provide feedback	Daily 15-30 minute synchronous meetings with classroom teachers with priority learning standards Set office hours Student and parent contact Teachers assess work and provide feedback	Teachers meet virtually with students according to the following schedule. 1st 9:00-9:20 2nd 9:30-9:50 3rd 10:00-10:20 4th 10:30-10:50 5th 11:00-11:20 6th 11:30-11:50

	Students receiving special education and related services may receive supports in a variety of ways-online, small groups in person	Students receiving special education and related services may receive supports in a variety of ways-online, small groups in person	<p>7th 1:00-1:20 8th 1:30-1:50</p> <p>Teachers assess work and provide feedback</p> <p>Students receiving special education and related services may receive supports in a variety of ways-online, small groups in person</p> <p>Response to Intervention (RtI) Committee meets</p>
--	--	--	---

We are currently in **Phase 4** and anticipate remaining in this phase for the opening of school. Two draft Phase 4 models have been developed for the consideration of the Board of Education.

Phase 4 Blended Learning Model A	Schneider	BRIJHS	BRHS
<p>Students assigned to one of three groups- Blue, Silver, and Knights. The student body will initially be split into two groups-Blue and Silver. Students unable to return to school due to a documented medical concern will be assigned to the Knights group.</p> <p>On Mondays, all students participate in remote learning 2.0; teachers will be involved with synchronous learning/asynchronous learning/office hours/professional development.</p> <p>Blue attends on campus on Tue and Wed with 2:20 dismissal, while Silver and Knights continue remote learning 2.0. Silver attends on campus on Thu and Fri with 2:20 dismissal, while Blue and Knights continue remote learning 2.0.</p> <p>Students receiving special services may be invited to attend on-campus four days per week.</p>			

<p>Monday- Remote Learning 2.0</p>	<p>Synchronous and asynchronous activities: Preview of learning for the week Class meetings Specials</p> <p>Students receiving special education and related services may receive supports in a variety of ways-online, small groups in person</p> <p>Student/parent contact</p> <p>Professional development</p>	<p>Synchronous and asynchronous activities: Preview of learning for the week Class meetings Specials</p> <p>Students receiving special education and related services may receive supports in a variety of ways-online, small groups in person</p> <p>Student/parent contact</p> <p>Professional development</p> <p>Jr High specifics for remote learning: 7th- SS 9:00-9:20 ELA 10:00-10:40 Math 10:50-11:10 PE 11:40-12:00 SCI 12:30-12:50 Exploratory 12:50-1:10</p> <p>8th- SS 9:30-9:50 ELA 10:00-10:40 Math 11:20-11:40 PE 11:40-12:00 SCI 12:50-1:10 Exploratory 1:30-1:50</p>	<p>Remote learning class schedule: 1st 9:00-9:20 2nd 9:30-9:50 3rd 10:00-10:20 4th 10:30-10:50 5th 11:00-11:20 6th 11:30-11:50 7th 1:00-1:20 8th 1:30-1:50</p> <p>Small group on-campus learning may occur.</p> <p>Students receiving special education and related services may receive supports in a variety of ways-online, small groups in person</p> <p>Professional development</p>
<p>Tue-Wed</p>	<p>Blue attends on campus with 2:20 dismissal. Silver and Knights have remote learning 2.0.</p>		
<p>Thu-Fri</p>	<p>Silver attends on campus with 2:20 dismissal. Blue and Knights have remote learning 2.0.</p>		

After 2:20 dismissals on Tue-Fri	Office hours for students not learning on campus that day Sanitizing of learning spaces Instructional planning
Pros	Ability to maintain social distancing protocols at arrival/lunch/recess/dismissal Built in time for students to receive specialized learning supports Professional development time for teachers
Cons	Increased child care needs for families Limited on campus learning

Phase 4 Blended Learning Model B	Schneider	BRIJHS	BRHS
<p>This model resembles Phase 4 Blended Learning Model A for Pre-K and grades 7-12.</p> <p>On Mondays, all students participate in remote learning 2.0; teachers will be involved with synchronous learning/asynchronous learning/office hours/professional development.</p> <p>Blue attends on campus on Tue and Wed with 2:20 dismissal, while Silver and Knights continue remote learning 2.0. Silver attends on campus on Thu and Fri with 2:20 dismissal, while Blue and Knights continue remote learning 2.0.</p> <p>Students receiving special services may be invited to attend on campus four days per week.</p> <p>All K-6 Blue <u>and</u> Silver students attend on campus Tue-Fri with 2:20 dismissal.</p>			

<p>Monday- Remote Learning 2.0</p>	<p>Synchronous and asynchronous activities: Preview of learning for the week Class meetings Specials</p> <p>Students receiving special education and related services may receive supports in a variety of ways-online, small groups in person</p> <p>Student/parent contact</p> <p>Professional development</p>	<p>Synchronous and asynchronous activities: Preview of learning for the week Class meetings Specials</p> <p>Students receiving special education and related services may receive supports in a variety of ways-online, small groups in person</p> <p>Student/parent contact</p> <p>Professional development</p> <p>Jr High Remote learning 2.0 class schedule: 7th- SS 9:00-9:20 ELA 10:00-10:40 Math 10:50-11:10 PE 11:40-12:00 SCI 12:30-12:50 Exploratory 12:50-1:10</p> <p>8th- SS 9:30-9:50 ELA 10:00-10:40 Math 11:20-11:40 PE 11:40-12:00 SCI 12:50-1:10 Exploratory 1:30-1:50</p>	<p>Remote learning 2.0 class schedule: 1st 9:00-9:20 2nd 9:30-9:50 3rd 10:00-10:20 4th 10:30-10:50 5th 11:00-11:20 6th 11:30-11:50</p> <p>7th 1:00-1:20 8th 1:30-1:50</p> <p>Small group on campus learning may occur.</p> <p>Students receiving special education and related services may receive supports in a variety of ways-online, small groups in person</p> <p>Professional development</p>
<p>Tue-Wed</p>	<p>Blue Pre-K students attend on campus. Blue and Silver K-3 attend on campus with 2:20 dismissal.</p>	<p>Blue and Silver 4-6 attend on campus with 2:20 dismissal. Blue 7-8 attends on campus with 2:20 dismissal.</p>	<p>Blue 9-12 attends on campus with 2:20 dismissal.</p>

Thu-Fri	Silver Pre-K students attend on campus. Blue and Silver K-3 attend on campus with 2:20 dismissal.	Blue and Silver 4-6 attend on campus with 2:20 dismissal. Silver 7-8 attends on campus with 2:20 dismissal.	Silver 9-12 attends on campus with 2:20 dismissal.
After 2:20 dismissals on Tue-Fri	Office hours for students not learning on-campus that day Sanitizing of learning spaces Instructional planning		
Pros	Reduced child care concerns for K-6 students Increased on campus learning for K-6 students Built in time for students to receive specialized learning supports		
Cons	Inability to consistently maintain social distancing protocols in K-6 classrooms Greater difficulty in maintaining social distancing protocols at arrival/lunch/recess for K-6		

Examples of 6' distancing in an intermediate classroom:



Example of 6' distancing in a Schneider classroom:



Example of a possible K/1 classroom:

Schneider K and 1st grade classroom currently do not have furniture that would comply with 6' distancing for full classes. We would need to purchase and/or borrow furniture from BRIJHS or consider purchasing lap desks and carpet squares.



Expectations:

Students-

Be present for instruction daily, whether on-campus or off-campus.
Complete all assignments in a timely manner.
Communicate with teachers when additional supports are needed.

Parents-

Do not send your student to school when they are sick. Please refer to the flowcharts included.
Communicate with teachers for any extenuating circumstances.
Engage in learning conversations with your student.

Teachers-

Engage students in meaningful learning experiences based upon the critical learning outcomes for your grade level/course.
Provide feedback to learners.
Remain mindful of building relationships in a variety of ways.

Other academic notes:

Attendance will be taken daily whether learning on- or off-campus.
Grading will return to traditional formats.

Other health-related notes:

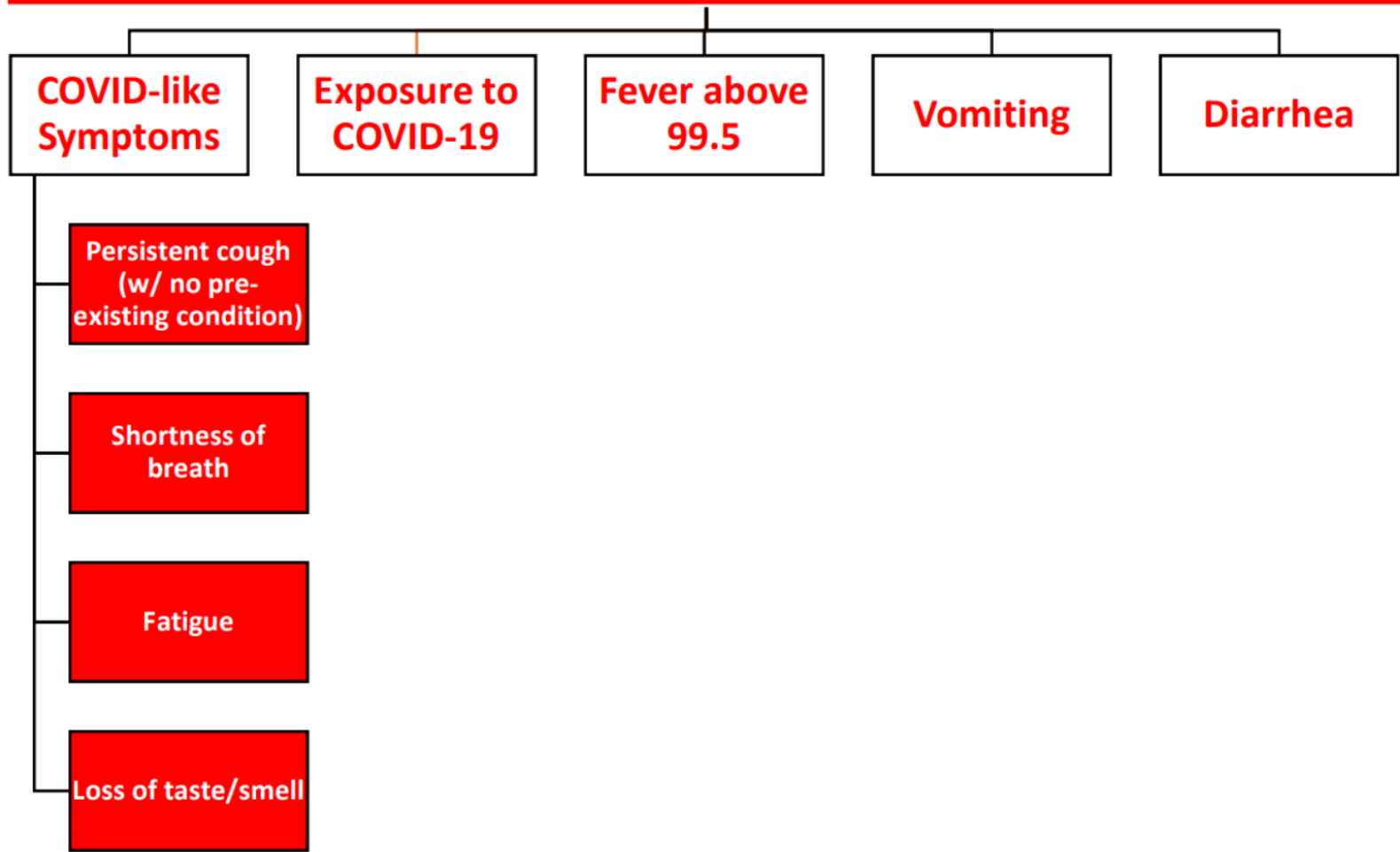
Parents are expected to conduct temperature and symptom checks for students every morning in preparation for on-campus learning. Staff will support those efforts by conducting student temperature checks upon arrival. Staff will self-certify daily.

Students and staff are expected to wear face coverings. Please communicate any physician-documented contraindications.

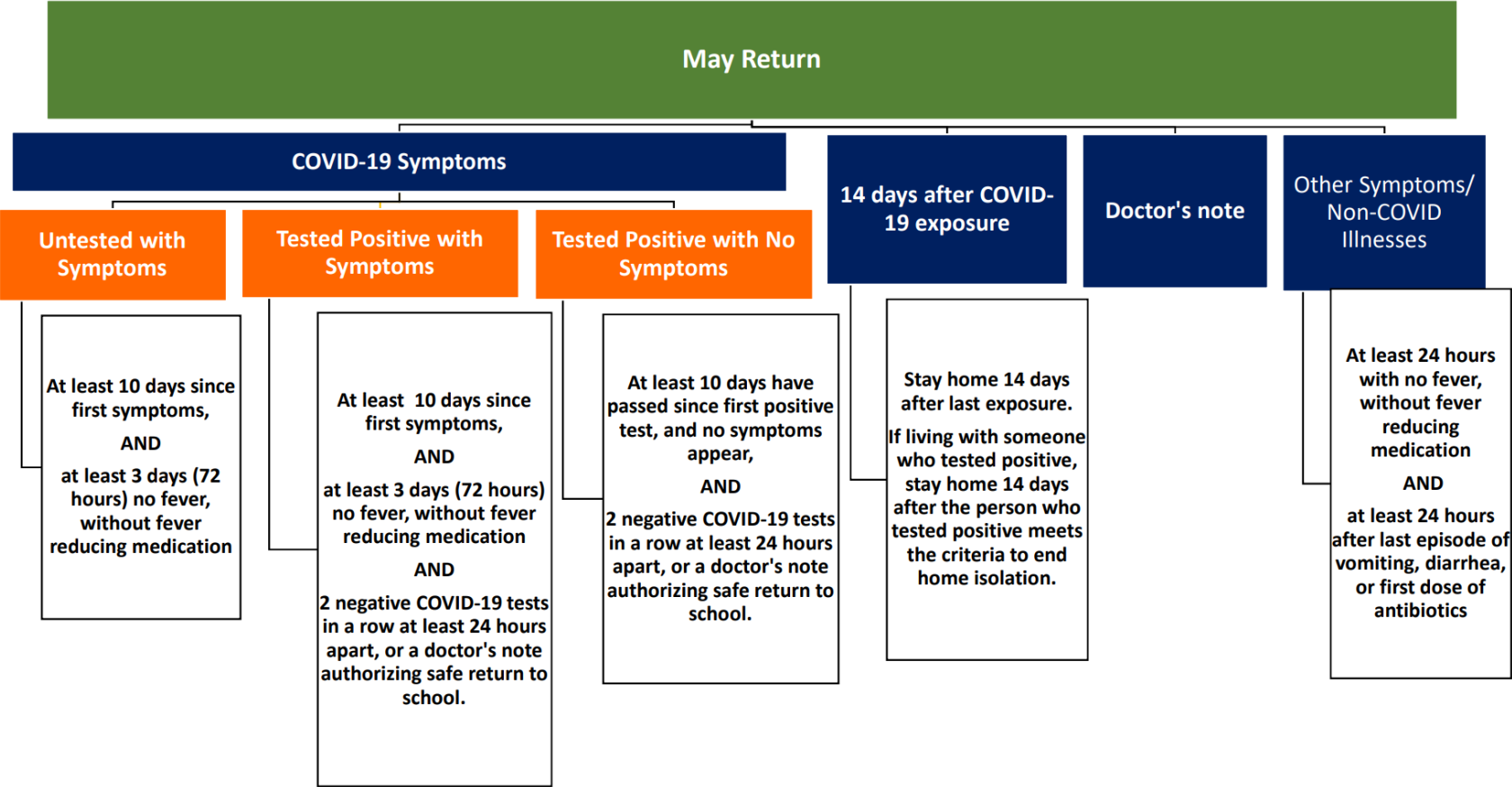
Increased sanitizing protocols will be in place on a daily basis.

More detailed information regarding health protocols in the buildings will be forthcoming. Please refer to the flowcharts included.

Stay Home



Return to School after Illness



Sources:

<https://services.aap.org/en/pages/2019-novel-coronavirus-covid-19-infections/clinical-guidance/covid-19-planning-considerations-return-to-in-person-education-in-schools/>

<https://www.isbe.net/Documents/Part-3-Transition-Planning-Phase-4.pdf>

<https://www.cdc.gov/coronavirus/2019-ncov/if-you-are-sick/end-home-isolation.html>

<https://www.cdc.gov/coronavirus/2019-ncov/community/schools-childcare/schools.html>