

Notes: In Common Time



Whole Note: usually is held for 4
beats or counts

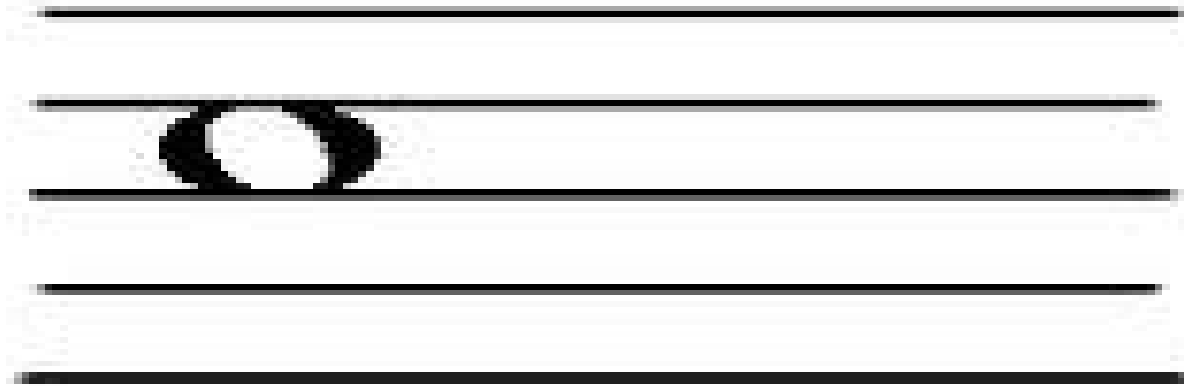
O

Whole Note

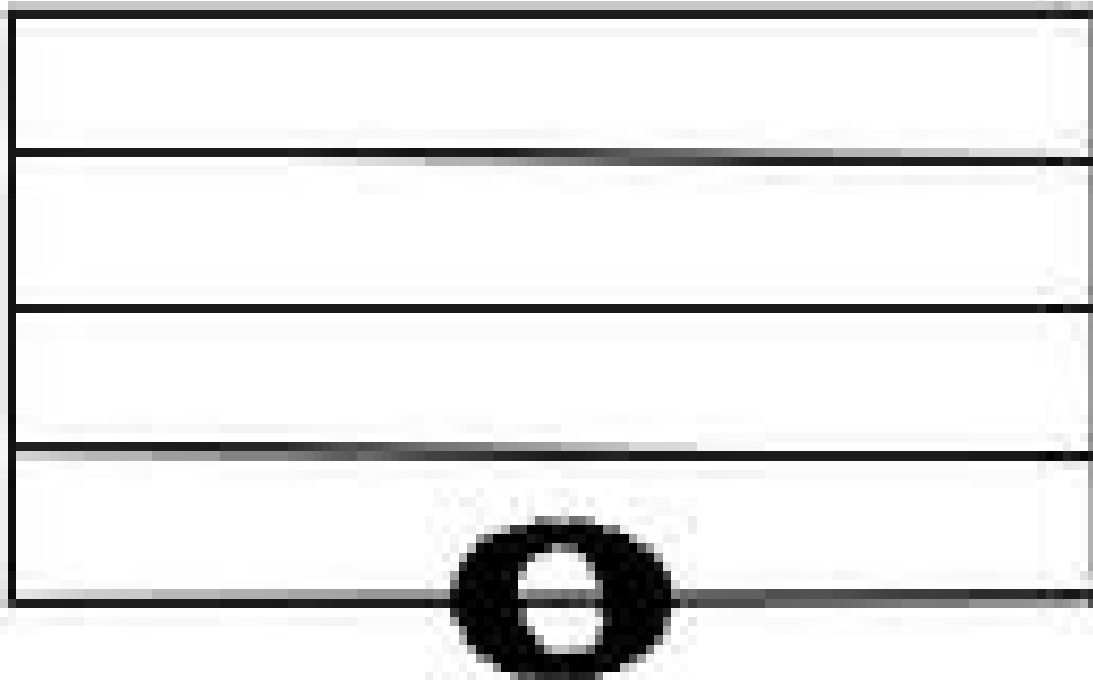
4 Counts

Whole Note: this whole note is on the
space in the staff

whole note



Whole Note: this whole note is on the line in the staff



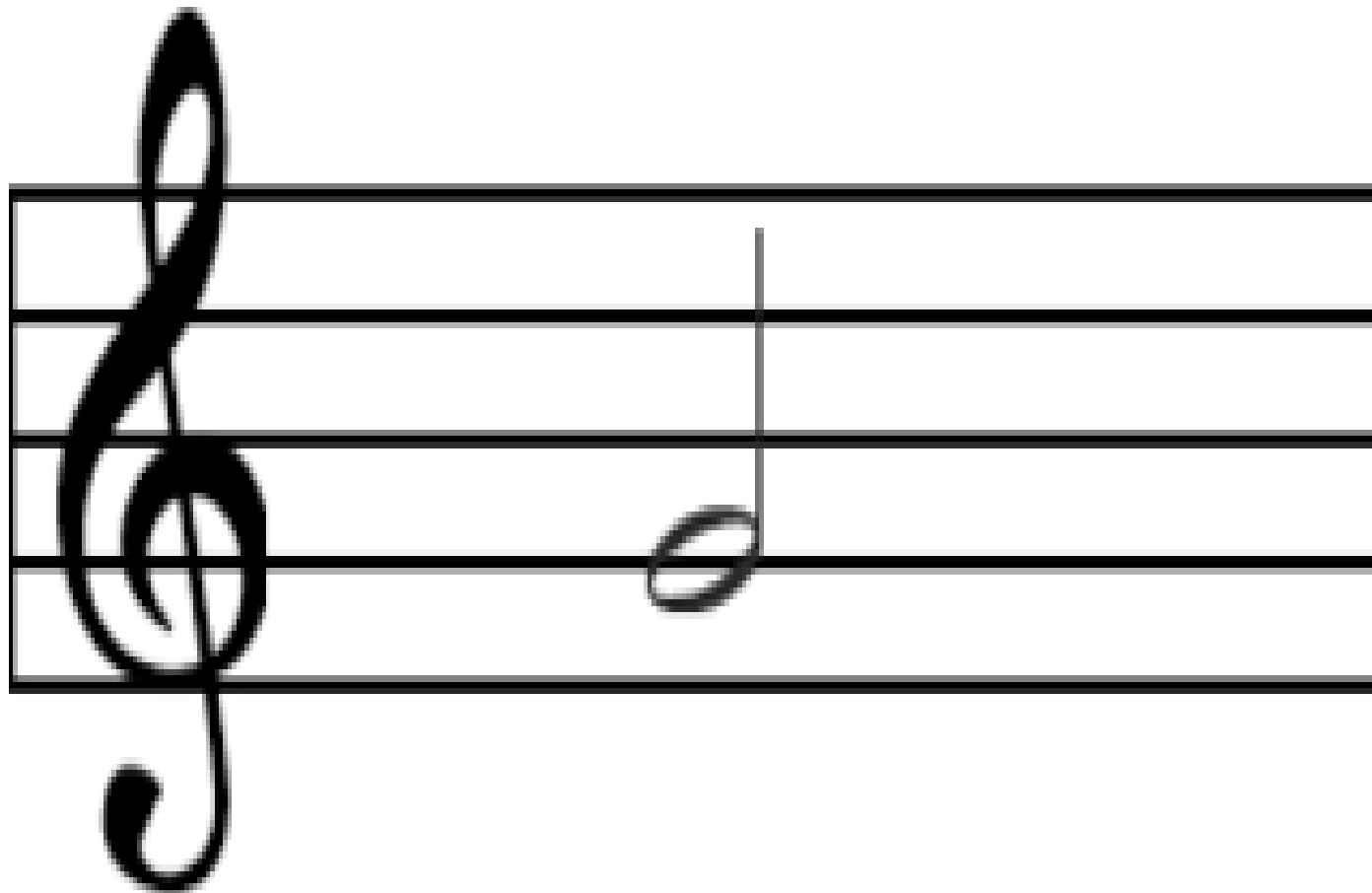
whole note

Half Note: usually is held for 2 beats
or counts



Half Note
2 Counts

Half Note: this half note is on the line
in the staff



Half Note: this half note is on the
space in the staff



Quarter Note: usually receives 1 beat
or count



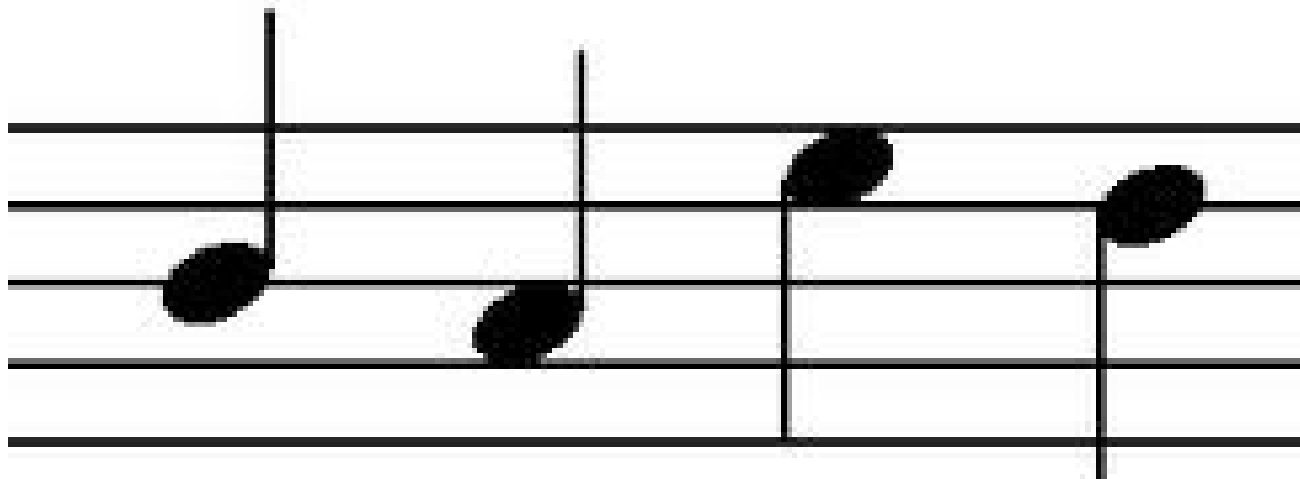
Quarter Note
1 Count

Quarter Note: this quarter note is on the line in the staff



Quarter Notes: Are these quarter notes on lines or spaces?

quarter notes



Eighth Note: usually receives $\frac{1}{2}$ of a
beat or count



Eighth Note

$\frac{1}{2}$ Count

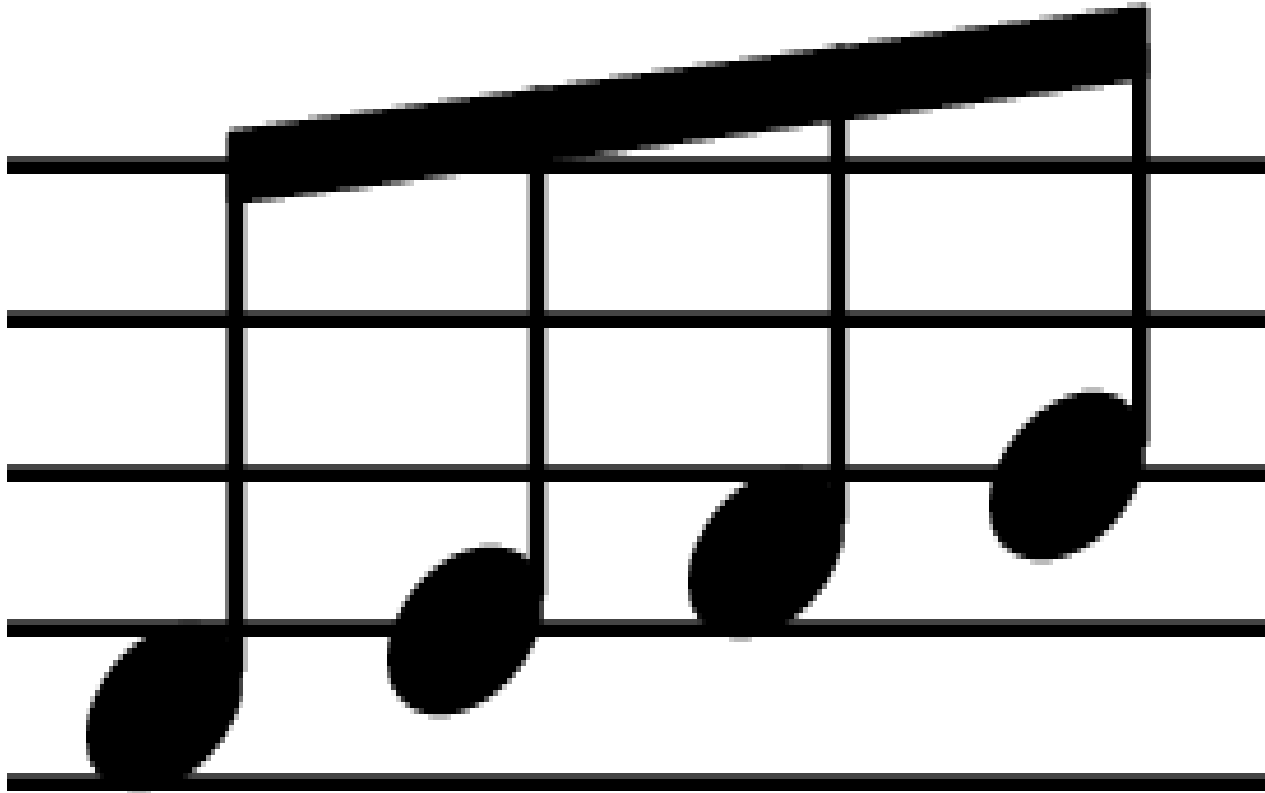
Eighth Note: this eighth note is on the space in the staff



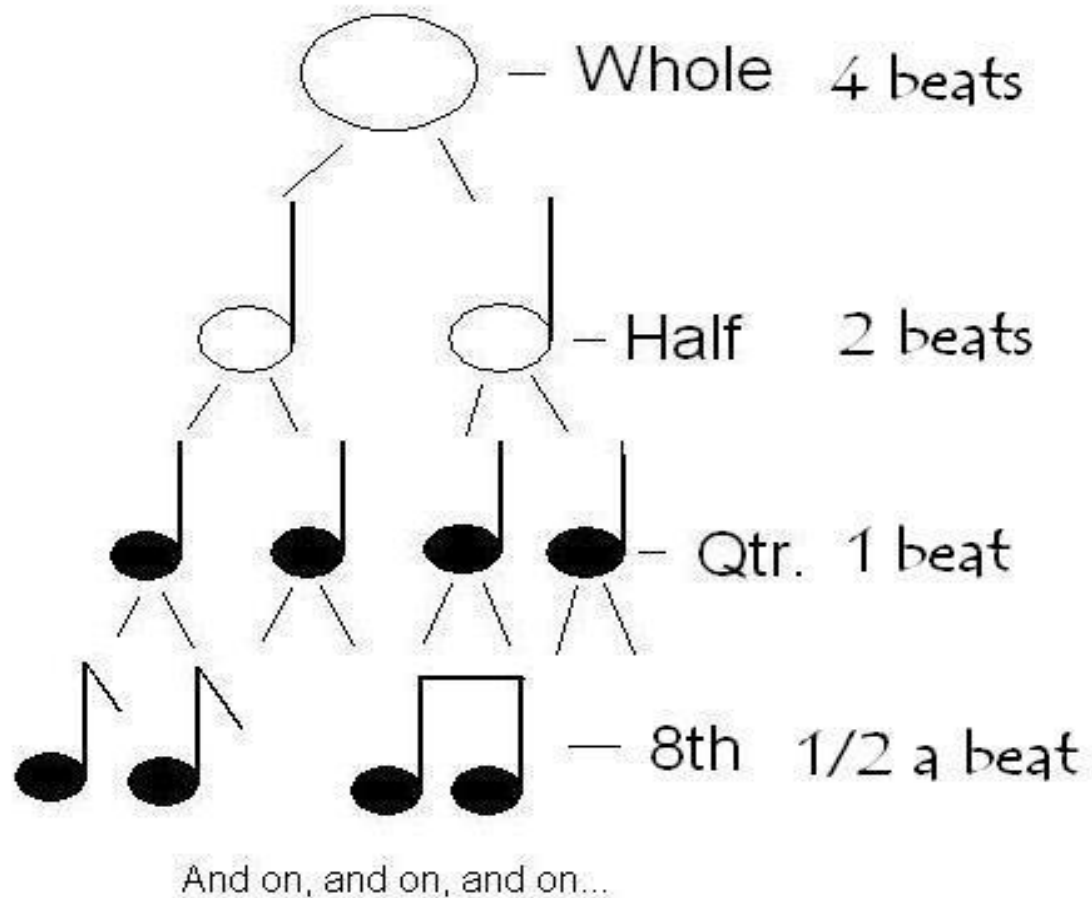
Eighth Notes: Are these eighth notes on the lines or spaces?



Sometimes eighth notes are beamed together in groups.



Let's Review with a Note Tree



Or is this a “Note” tree?

